



WIPLINE FLOATS • SKIS • MODIFICATIONS • AIRCRAFT SALES
AVIONICS • INTERIOR • MAINTENANCE • PAINT REFINISHING

SERVICE KIT 30

HINGED ACCESS DOORS AND BAGGAGE BAY FLOOR INSTALLATION

By: RCG	Aircraft Makes/Model(s): DeHavilland DHC-6 Series	Float Model(s): 13000 Series	Note(s): Optional Compliance Service Letter P/N 1002512
Approved: JRS			
Date: 12/13/2017			
Rev: E			

LOG OF REVISIONS

Revision	Description	Date
E	New document format; 1009671 was 1085H3-1MDC	12/13/2017

FAA approval has been obtained for technical data in this publication that affects STC or TSO design compliance

EFFECTIVITY:

This service letter applies to: DeHavilland DHC-6 Series with Wipline 13000 Amphibious or Straight Floats with fixed access covers installed per STC SA2CH

COMPLIANCE:

Optional compliance

BACKGROUND:

This service kit provides parts to replace the original fixed access covers with hinged baggage doors located on the top deck and install baggage bay floors

COMPLIANCE METHOD:

Install the parts included in this service kit in accordance with the Work Instruction section of this service letter

APPROXIMATE SHOP HOURS:

Installing the hinged access covers and baggage bay floors will take approximately 10 hours per float

WARRANTY INFORMATION:

Labor and parts not included for this modification

TECHNICAL DATA:

Copies of this service letter, associated service kit, float service manual, and float parts manual are available at www.wipaire.com

See photos and figures below for details to aid in performing this modification

See Table 1 below for a list of parts included in the service kit

1700 Henry Ave - Fleming Field (KSGS), South St. Paul, MN 55075

Phone: 651.451.1205 | Fax: 651.457.7858

www.wipaire.com



WIPLINE FLOATS • SKIS • MODIFICATIONS • AIRCRAFT SALES
 AVIONICS • INTERIOR • MAINTENANCE • PAINT REFINISHING

ITEMS PROVIDED IN SERVICE KIT (PER SET OF FLOATS)

ITEM	QTY	PART NUMBER	DESCRIPTION
-	1	1002512-01	KIT, SERVICE KIT 30, HINGED ACCESS DOORS AND BAGGAGE BAY FLOOR INSTALLATION
1	4	10A01000-464	ASSEMBLY, DOOR, BAGGAGE BAY
2	4	13A01162-052	BAGGAGE LIP
3	8	1003425	TOP SKIN CROSS TIE ANGLE
4	28 FT	1009671	GASKET, DOOR
5	4	1002063	BAGGAGE LIP
6	6	1003672	ANGLE
7	4	1003673	ANGLE
8	2	1003675	PANEL
9	2	1003676	PANEL
10	2	1003677	PANEL
11	2	7A3-4205-1	PLACARD
12	2	7A3-4205-2	PLACARD
13	1	1004518	TEMPLATE
14	1	1004519	TEMPLATE
15	2	1005911	PUMPER TUBE
16	4	MS35489-19	GROMMET
17	92	SSTATP	FLOOR SCREW
18	36	CR3213-5-5	CHERRY MAX RIVET
19	12	CR3213-5-6	CHERRY MAX RIVET

TABLE 1



WIPLINE FLOATS • SKIS • MODIFICATIONS • AIRCRAFT SALES
AVIONICS • INTERIOR • MAINTENANCE • PAINT REFINISHING

WORK INSTRUCTION

1. Perform the modification as shown in the drawings below

REV	DATE	ECO	DR	DESCRIPTION
B	09/13/2010	21106	BCH	DWG WAS 781-4202, ADDED SHIT 2, DELETED NOTE 1, NOTE 2 RELABELLED 1, AND NOTE 3.
C	07/02/2014	23212	AAS	REVISED NOTE #5, ADDED ITEM #11 TO BOM, 13501138-2-006 (2) WAS (18)
D	9/24/2017	25321	LRS	CREATED SERVICE KIT 30
E	12/15/2017	25321	LRS	1009671 WAS 1065H3-TMDC

WIPAIRE, INC.
1700 HENRY AVE SOUTH ST. PAUL, MN 55070
(651) 451-1205

NET SCALE: 1:16
SERVICE KIT 30, DOORS AND BAGGAGE BAYS, 13000 FLT

REV: **1002512**

Sheet 1 of 2

13000 BAGGAGE BAY MODIFICATION

1. DRILL OUT #8, #9, #4 CROSS TIES AND REMOVE FROM TOP SKIN. (IN ADDITION TO THE #5 RIVETS THAT ATTACH THE BAGGAGE TIES TO THE TOP SKIN, THE #8, #9 AND #4 RIVETS THAT ATTACH THE CROSS TIES TO THE TOP RAIL INSIDE THE FLAT COMPARTMENT, ARE IN THE CORRECT DIRECTION).
2. CLEO, TEMPLATES TO TOP SKIN ITEMS 13 AND 14, MAKING SURE THAT THE FWD AND INBOARD SIDE ARE IN THE CORRECT DIRECTION.
3. MARK CUT LINES ON TOP SKIN.
4. CUT, FILE, DEBURR BAGGAGE AREA. (RELOCATE PUMPOUT CUT NOTED)
5. INSTALL CROSS TIES IN NEW LOCATIONS. FORWARD COMPARTMENTS USE OLD CROSS TIES. OLD CROSS TIES THAT WERE DRILLED OUT, AFT COMPARTMENTS USE OLD CROSS TIES ON FORWARD EDGE AND NEW CROSS TIES ON AFT EDGE.
6. ADD CROSS TIES USING #4 BELOCATE RIVET SPACING AND #4 RIVETS.
7. ATTACH CROSS TIES TO TOP RAILS WITH #5 RIVETS. THREE RIVETS THROUGH EXISTING CROSS TIE FLANGES.
8. WHERE THE EXISTING CROSS TIES WERE REMOVED, FILL HOLES IN TOP RAIL WITH #5 FLUSH RIVETS.
9. INSTALL BAGGAGE LIPS ITEMS 2 & 5. OPEN SIDE OF ITEM 2 FACES INBOARD. PLACE LIP SEALS SUCH THAT A 1/4" REMAINS ABOVE THE TOP SKIN.
10. INSTALL INBOARD EDGE OF BAGGAGE OPENINGS TO ACCEPT BAGGAGE COVER HINGE.
11. INSTALL BAGGAGE COVERS BY CLAMPING IN PLACE ON THE INBOARD BAGGAGE FLANGE WITH #4 ROUND HEAD RIVETS. SEAL CONTACT AREA, AND RIVET IN PLACE WITH #4 ROUND HEAD RIVETS.
12. GRIND BAGGAGE COVER LOCK CATCH. (FOLLOW PATTERN THAT IS IN BAGGAGE FLANGE).
13. SEAL AROUND BAGGAGE FLANGE.
14. INSTALL FOAM SEAL AROUND BAGGAGE FLANGE. (THIS SEAL WILL RUN AROUND ALL THREE SIDES OF BAGGAGE FLANGE STARTING AT THE HINGE AND ENDING AT THE HINGE. ADD SEAL TO DOOR 3 SIDES).
15. INSTALL BAGGAGE PLACARDS ITEM 11 & 12.

WEIGHT AND BALANCE INFORMATION

ITEM	WEIGHT	ARM	MOMENT
BAGGAGE DOORS - FWD (2)	3.95	183	485
BAGGAGE DOORS - AFT (2)	3.95	183	485
BAGGAGE FLOOR - FWD (2)	1.45	112	163
BAGGAGE FLOOR - AFT (2)	1.45	112	163
BAGGAGE FLOOR - FWD (2)	3.25	130	423
BAGGAGE FLOOR - AFT (2)	3.25	130	423
TOTAL	16.75	730	2547

NOTE:

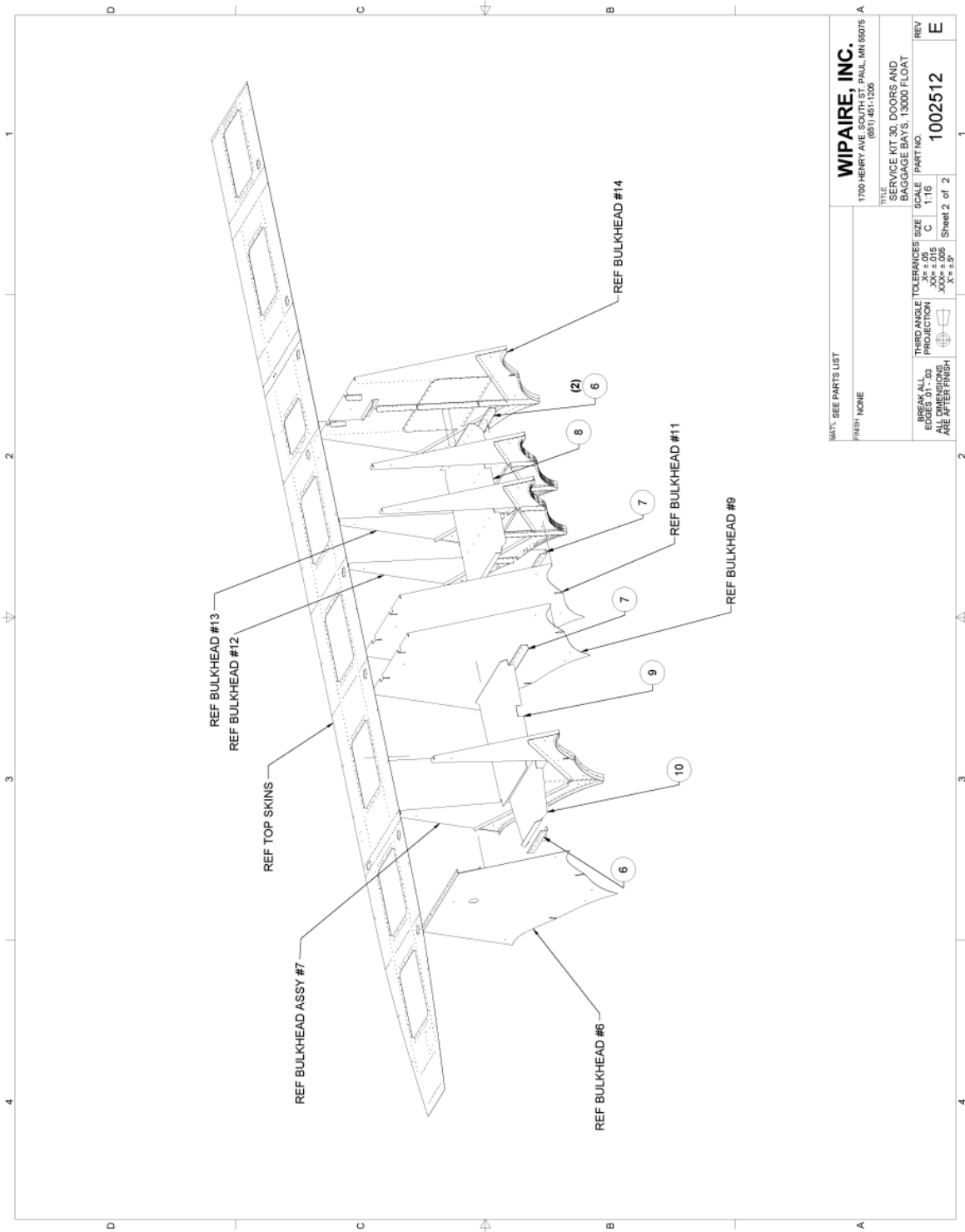
1. APPROVAL BASIS FOR THIS INSTALLATION TSD-C27.

PARTS LIST

ITEM	QTY	PART NUMBER	DESCRIPTION
1	4	10A01000-464	ASSEMBLY, DOOR, BAGGAGE BAY
2	4	13A01162-052	BAGGAGE LIP
3	8	10034-25	TOP SKIN CROSS-TIE ANGLE
4	28 FT	1009671	GASKET, DOOR
5	4	1002063	BAGGAGE LIP
6	6	1003672	ANGLE, BAGGAGE FLOOR, 10.62, 13000 FLT
7	4	1003673	ANGLE, BAGGAGE FLOOR, 21.88, 13000 FLT
8	2	1003675	PANEL, BAGGAGE FLOOR, BLKHD #11-14, 13000 FLT
9	2	1003676	PANEL, BAGGAGE FLOOR, BLKHD #7-9, 13000 FLT
10	2	1003677	PANEL, BAGGAGE FLOOR, BLKHD #6-7, 13000 FLT
11	2	7A3-4205-1	PLACARD, STA 123, FLT BAGGAGE BAY
12	2	7A3-4205-2	PLACARD, STA 183, FLT BAGGAGE BAY
13	1	1004518	TEMPLATE, CUT OUT, BAGGAGE DRS, FWD, 13000
14	1	1004519	TEMPLATE, CUT OUT, BAGGAGE DRS, AFT, 13000
15	2	1005911	PUMPER TUBE, 68" LONG
16	4	MS35469-19	GROMMET
17	92	SS1ATP	FLOOR SCREW, 8 X 5/8"
18	36	CR2115-5-5	CHERRY MAX RIVET
19	12	CR2115-5-8	CHERRY MAX RIVET



WIPLINE FLOATS • SKIS • MODIFICATIONS • AIRCRAFT SALES
 AVIONICS • INTERIOR • MAINTENANCE • PAINT REFINISHING



WIPAIRE, INC. 1700 HENRY AVE SOUTH ST. PAUL, MN 55075 (651) 451-1239	
TITLE SERVICE KIT 30, DOORS AND BAGGAGE BAYS, 13000 FLOAT	
THIRD ANGLE PROJECTION	SCALE C 1:16
BREAK ALL EDGES OF .00 PROJECTION ARE AFTER FINISH	REV 1002512
FINISH: NONE	Sheet 2 of 2

NOTES:

1. Upon completion of inspection, enter information in Aircraft Logbook for completion of Wipaire Service Kit 30
2. Once service kit is accomplished, please visit www.wipaire.com and update your aircraft service letter/kit record using the link found on the Customer Support dropdown menu under "Update Service Letter & Kit Compliance Status"