



- MANUFACTURERS OF WIPLINE FLOATS & SKIS
- SPECIALISTS IN AIRCRAFT MODIFICATION

1700 Henry Avenue - Fleming Field  
South St. Paul, MN 55075  
651-451-1205

## **SERVICE KIT: #46**

DATE: May 24, 2004

SUBJECT: PA-18 Wide Body modification for 2000 lb gross weight.

MODEL: All Wide Body PA-18 with 1.00" X 0.058" forward carry through tubes (Airframes Inc. P/N TD5).

INSTALLATION INSTRUCTIONS:

### ASSEMBLY:

1. Cut 1.125Φ" X .065" X 24" 4130N tube in half.
2. Weld one (1) half of the tube in place on forward carry through (Airframes, Inc P/N TD5) tube (see drawing) per AC 43.13

### REMARKS

1. This service letter is not applicable to Wide Body PA-18 with 1.00" X 0.065 or larger carry through tube installed

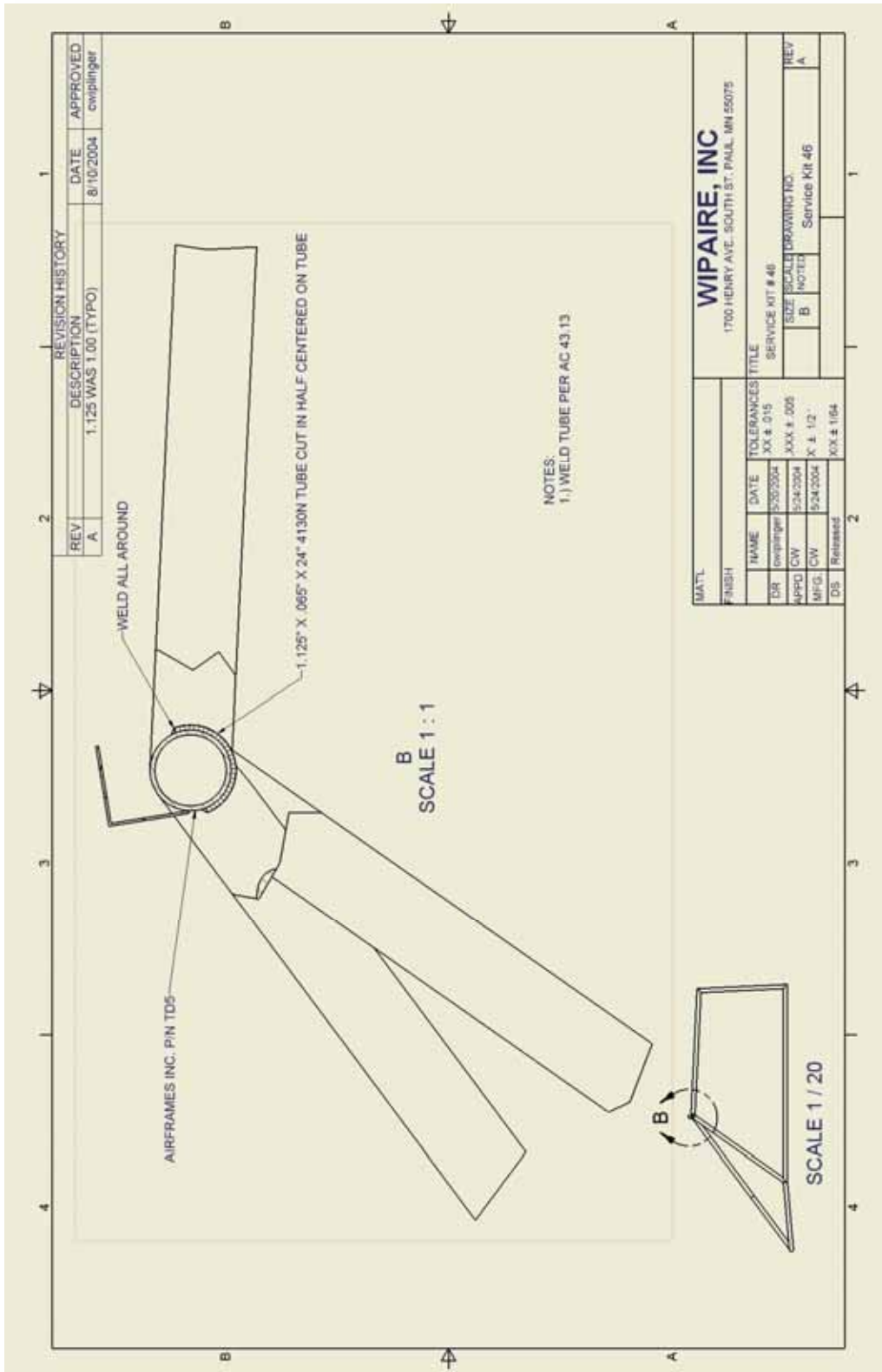
### PARTS LIST

<u>Part No.</u>	<u>Description</u>	<u>Qty</u>
	1.125Φ" X .065" X 24" 4130N TUBE	1 (NOT FURNISHED)



- MANUFACTURERS OF WIPLINE FLOATS & SKIS
- SPECIALISTS IN AIRCRAFT MODIFICATION

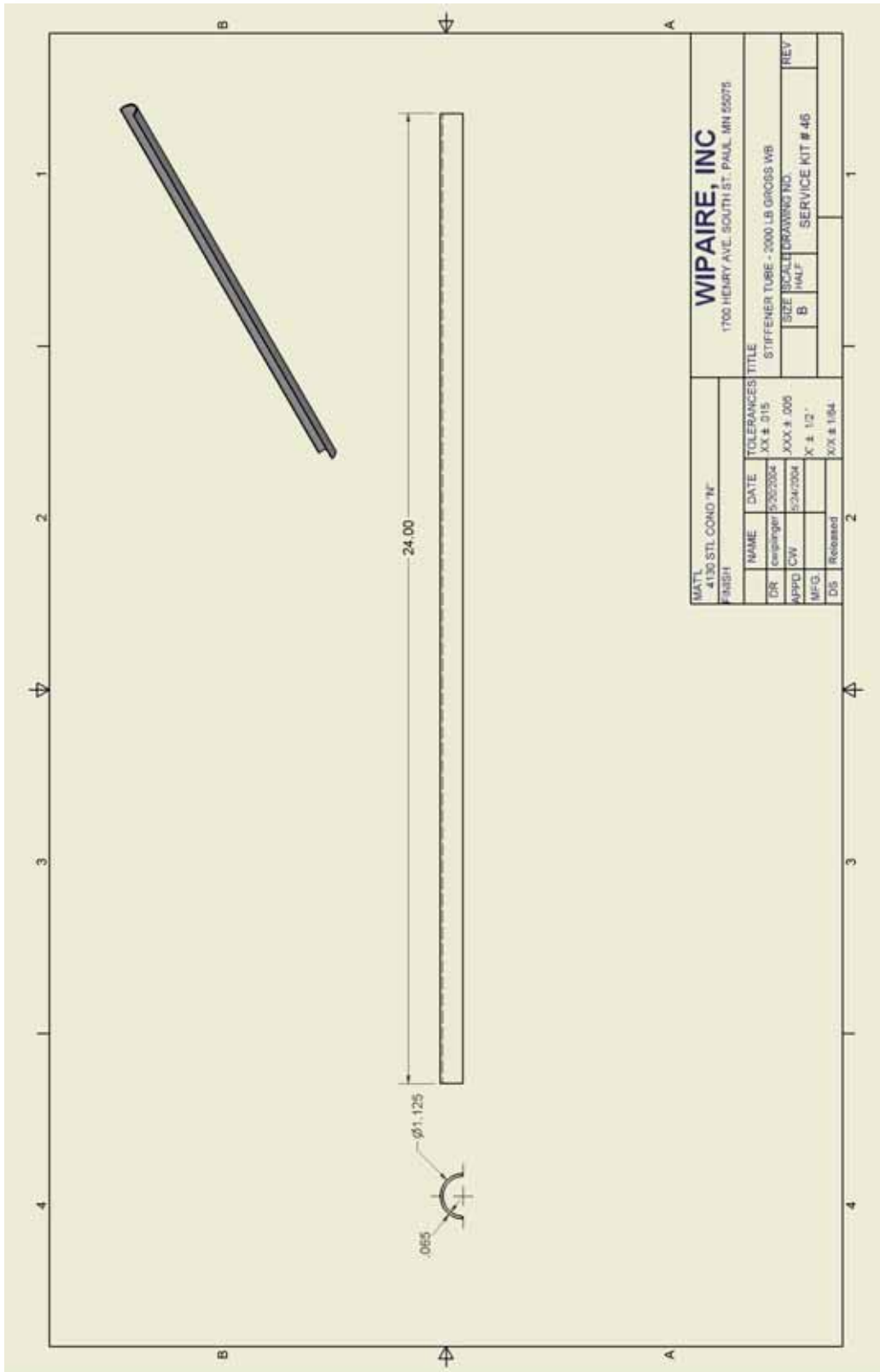
1700 Henry Avenue - Fleming Field  
 South St. Paul, MN 55075  
 651-451-1205





- MANUFACTURERS OF WIPLINE FLOATS & SKIS
- SPECIALISTS IN AIRCRAFT MODIFICATION

1700 Henry Avenue - Fleming Field  
 South St. Paul, MN 55075  
 651-451-1205



MATERIAL 4130 STL COND "H" FINISH		WIPARE, INC 1700 HENRY AVE. SOUTH ST. PAUL, MN 55075	
NAME	DATE	TOLERANCES TITLE	
DR cswagner	5/20/2004	.XX ± .015	STIFFENER TUBE - 2000 LB GROSS WB
APPD CW	5/24/2004	.XXX ± .000	SIZE SCALE DRAWING NO.
MFG.		X ± 1/2"	B HALF SERVICE KIT #46
DS Released		.XXX ± 1/64	REV