



- MANUFACTURERS OF WIPLINE FLOATS & SKIS
- SPECIALISTS IN AIRCRAFT MODIFICATION

1700 Henry Avenue - Fleming Field
South St. Paul, MN 55075
651-451-1205

SERVICE KIT: #51

DATE ISSUED: June 2, 2005

SUBJECT: 802 Air Tractor Access Panel Fabrications for Float Longeron and Float Bracket Repair

MODEL: Floated AT-802 Air Tractors

INSTRUCTIONS:

1. Remove flaps and bell crank from torque tubes.
2. Remove close-out panel and rubber boot.
3. Remove forward row of screws visible on the right hand side of Image #1.
4. Cut skin as shown according to dimensions in Image #1.
5. Install doubler (p/n 1001561, Doubler, Left and p/n 1001562, Doubler, Right) as shown in images #4 and #5 with AN470-4 rivets.
6. Install nut plates to doubler as shown in Image #3 and drill corresponding holes in the cut-off skin panel.

NOTE:

Use caution when cutting the skin as is must be re-used for the access panel and avoid cutting too deeply, endangering the components underneath.

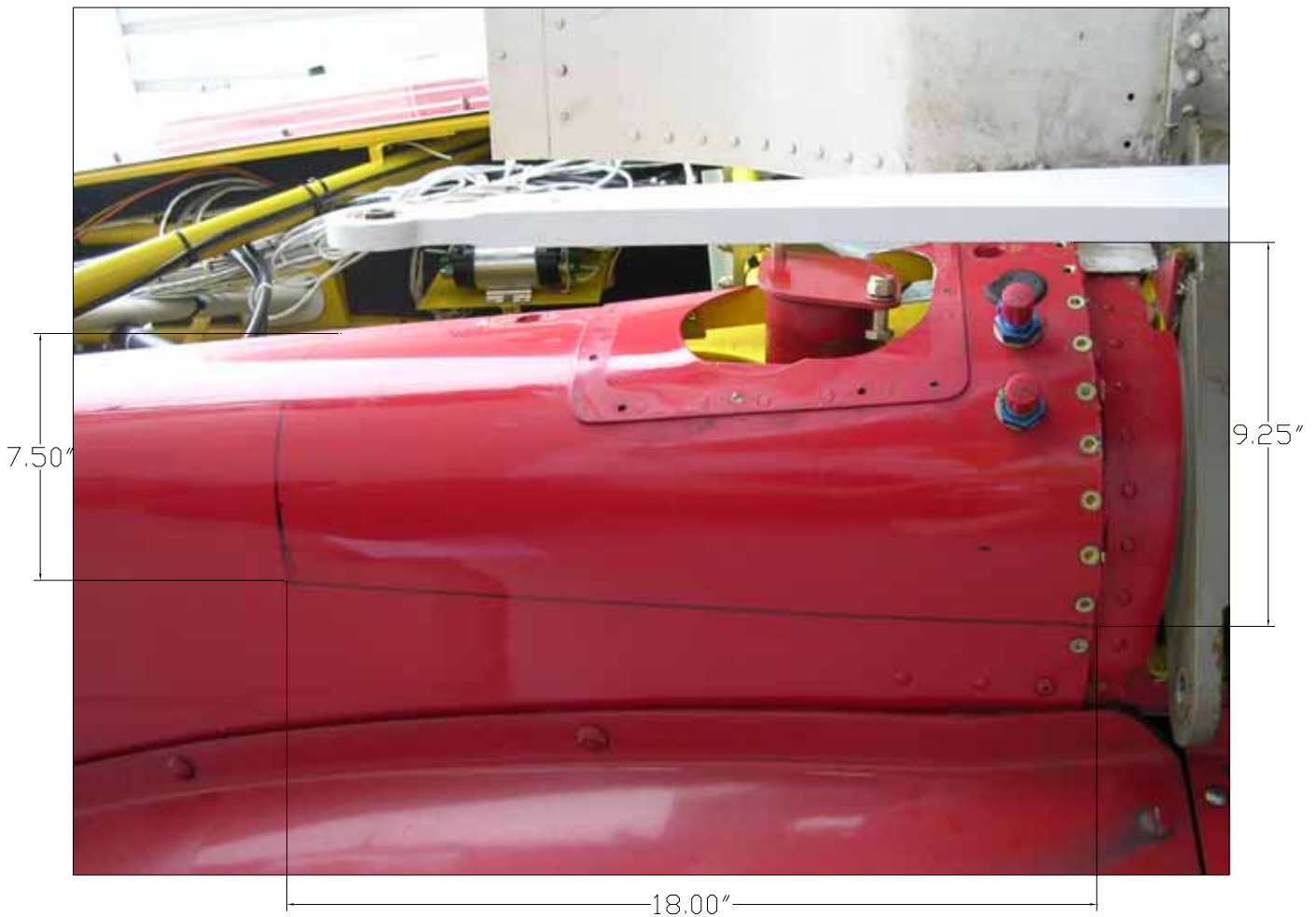


- MANUFACTURERS OF WIPLINE FLOATS & SKIS
- SPECIALISTS IN AIRCRAFT MODIFICATION

1700 Henry Avenue - Fleming Field
South St. Paul, MN 55075
651-451-1205

Image #1

Area marked to be cut for Access Panel creation.



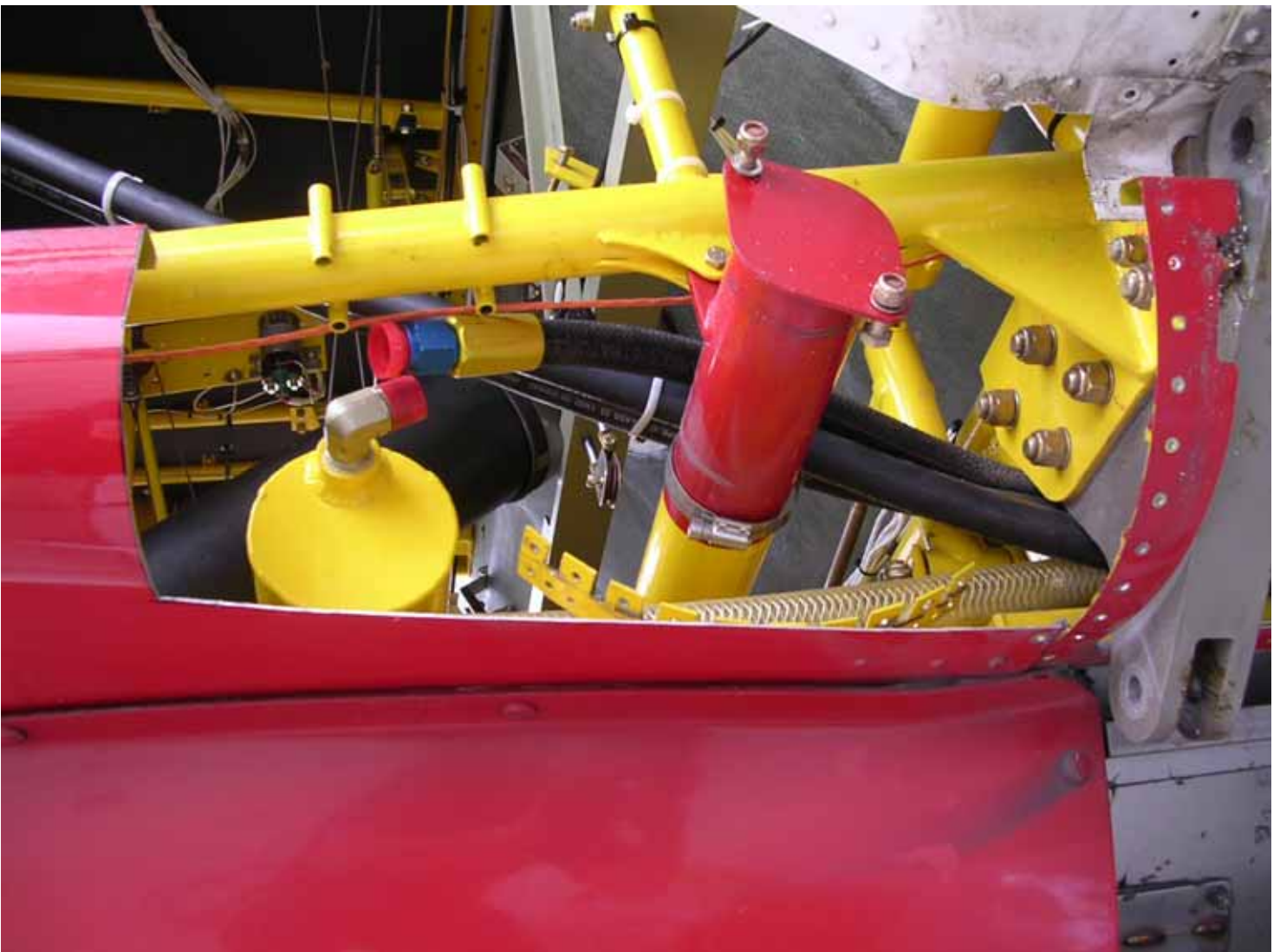


- MANUFACTURERS OF WIPLINE FLOATS & SKIS
- SPECIALISTS IN AIRCRAFT MODIFICATION

1700 Henry Avenue - Fleming Field
South St. Paul, MN 55075
651-451-1205

Image #2

Initial opening cut for Access to accomplish Service Kits #50 and #51.



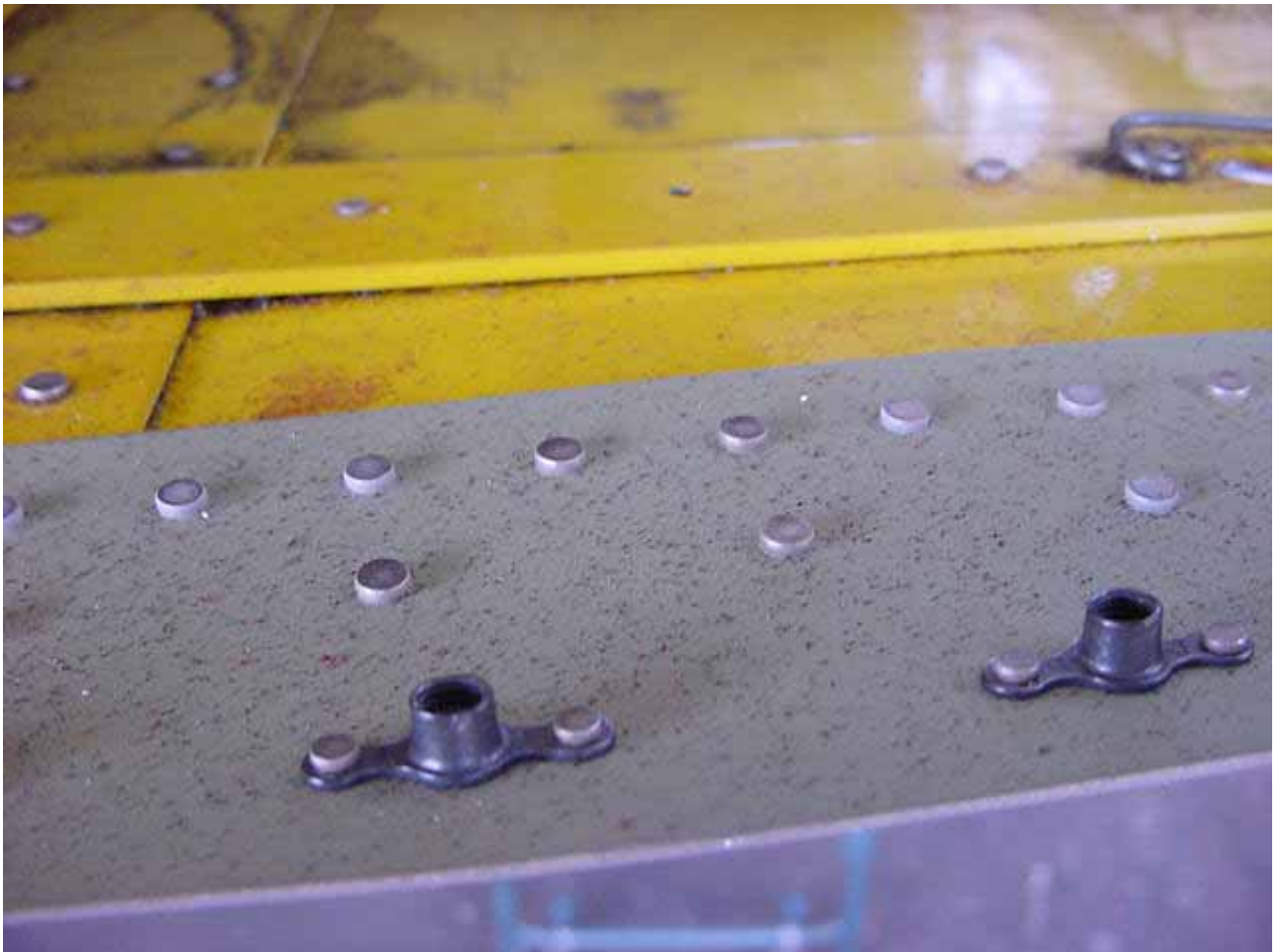


- MANUFACTURERS OF WIPLINE FLOATS & SKIS
- SPECIALISTS IN AIRCRAFT MODIFICATION

1700 Henry Avenue - Fleming Field
South St. Paul, MN 55075
651-451-1205

Image #3

Close up of rivet work and nut plate spacing on access panel doubler.





- MANUFACTURERS OF WIPLINE FLOATS & SKIS
- SPECIALISTS IN AIRCRAFT MODIFICATION

1700 Henry Avenue - Fleming Field
South St. Paul, MN 55075
651-451-1205

Image #4
Access panel installed.





- MANUFACTURERS OF WIPLINE FLOATS & SKIS
- SPECIALISTS IN AIRCRAFT MODIFICATION

1700 Henry Avenue - Fleming Field
South St. Paul, MN 55075
651-451-1205

Image #5
Close up of Access panel doubler installed.

