



• MANUFACTURERS OF WIPLINE FLOATS & SKIS
• SPECIALISTS IN AIRCRAFT MODIFICATION

1700 Henry Avenue - Fleming Field
South St. Paul, MN 55075
651-451-1205

Rev / Latest
Rev. Date
A / 1-15-11

Original
Release
1-15-11

Prepared by Ellen Parker	Aircraft Make / Model STCs SA00637CH, SA00674CH, SA00713CH, SA0073CH, SA00804CH, SA00900CH, SA00910CH, SA001156CH, SA01185CH, SA01320CH, SA01272CH	Float / Ski Model 2100, 2350, 3000, 3450 Amphibian Floats	Page 1 / 2
-----------------------------	---	--	---------------

Title
Optional Hydraulic Power-Pack Timer Relay Installation

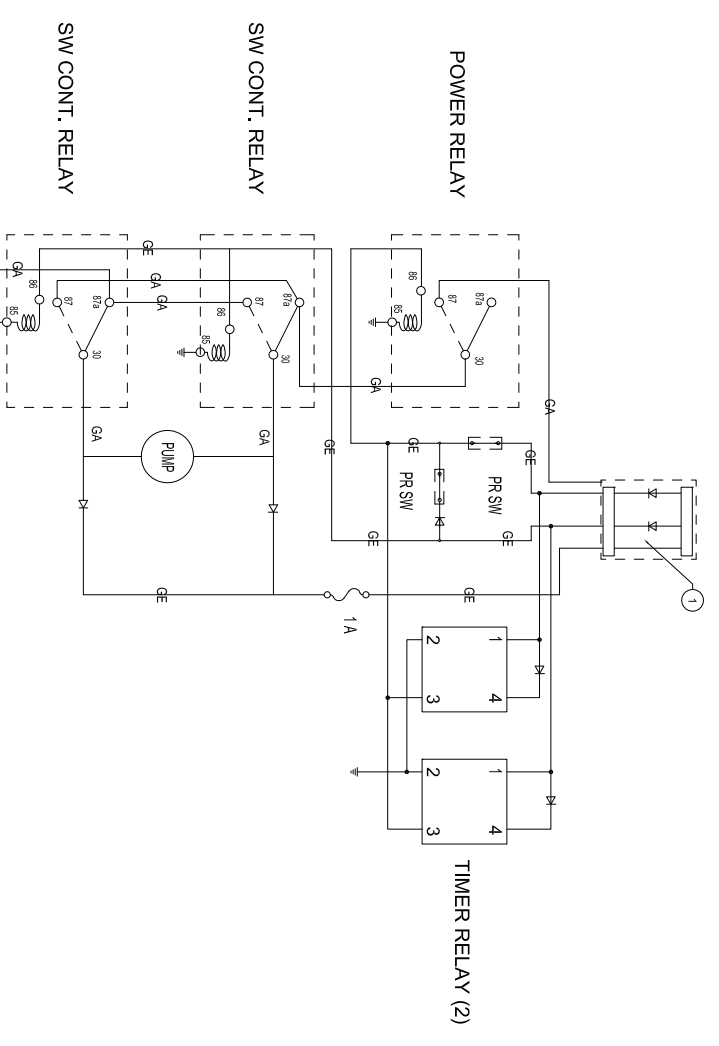
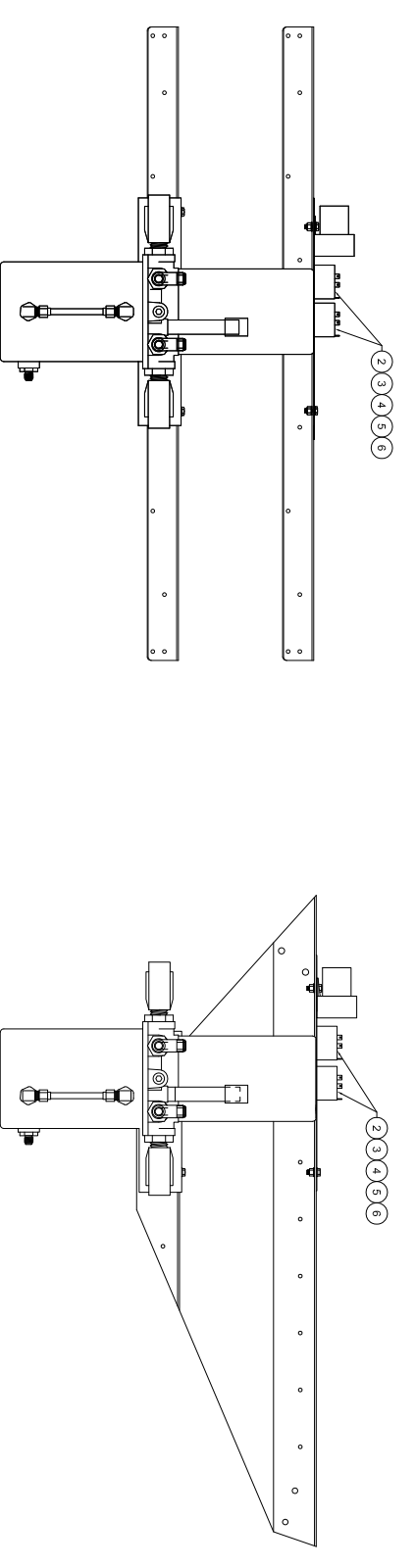
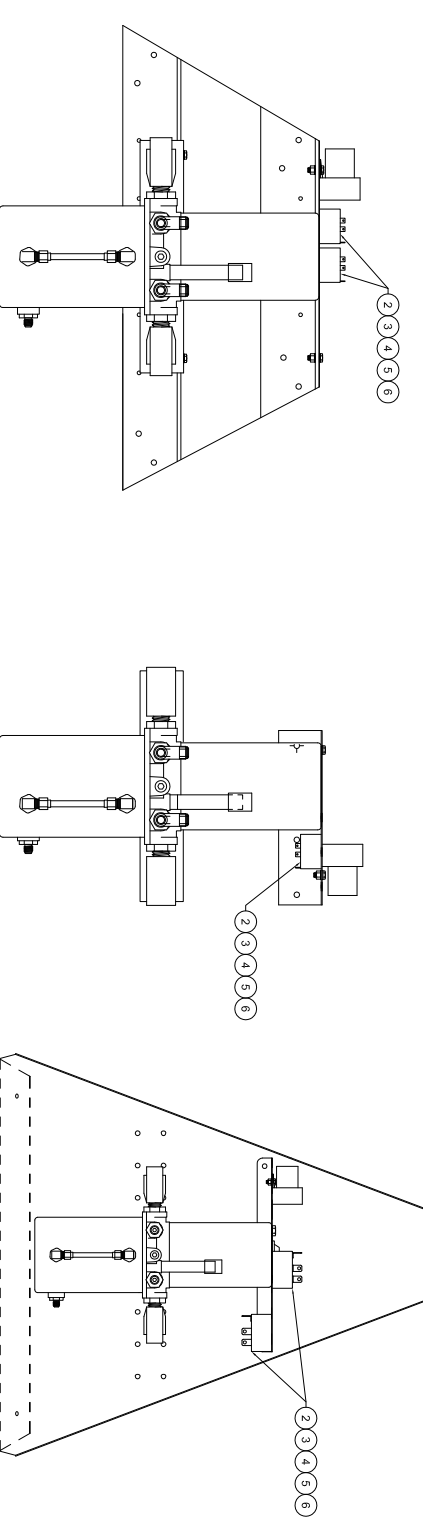
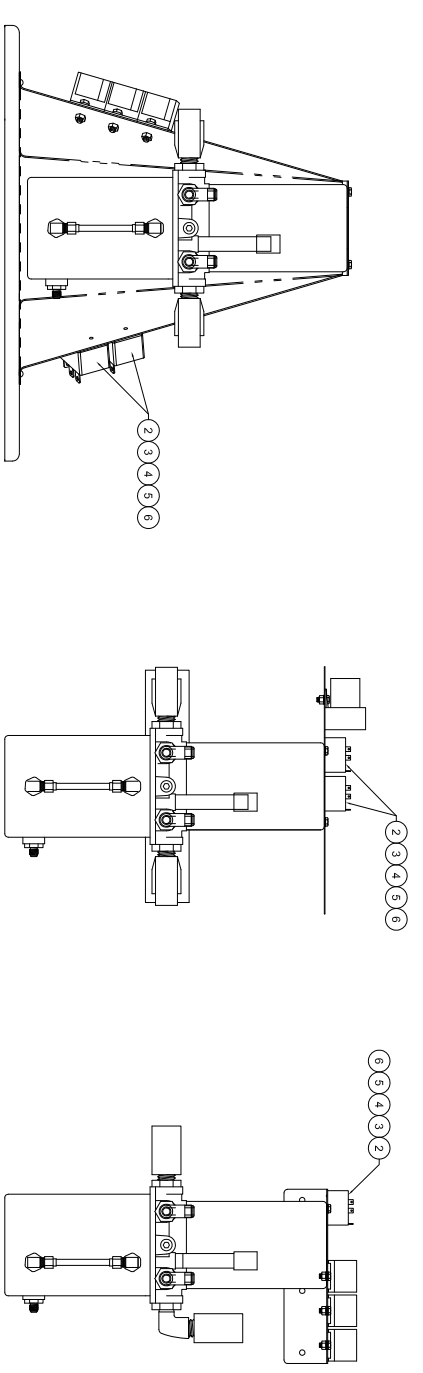
FAA approval has been obtained on technical data in this publication that affects the Supplemental type design or TSO compliance

SERVICE KIT: 80

EFFECTIVITY	All aircraft modified by STCs SA00637CH, SA00674CH, SA00713CH, SA0073CH, SA00804CH, SA00900CH, SA00910CH, SA001156CH, SA01185CH, SA01320CH, SA01272CH. Aircraft with 12V power systems, use kit 1005053-01 Aircraft with 24V power systems, use kit 1005053-02
COMPLIANCE	This is an optional product enhancement recommended by Wipaire Engineering to improve the function of the hydraulic system.
BACKGROUND	See Service Letter 112, 1005052, for detailed information on the background.
COMPLIANCE METHOD	Install this optional Service Kit with included parts as per Wipaire Drawing 1005053 Rev A or latest revision.
SHOP HOURS	1 to 3 hours depending on aircraft configuration.
WARRANTY	None offered.
NOTES	None.

REV	DATE	ECO	DR	DESCRIPTION
A	12-15-10	22180	DLW	INITIAL RELEASE

REVISION HISTORY	
1	INITIAL RELEASE



ELECTRICAL SCHEMATIC

(RELAYS SHOWN IN RELAXED CONDITION)

1. GE WIRES 20 GA
2. GA WIRES 12 GA

ITEM	QTY	01	QTY	02	P/N	DESCRIPTION
1	1	1	1	1	1004949	CABLE ADAPTER
2	1	1	0	1	1005042	ASSEMBLY, TIMER RELAY HARNESS 12V SYSTEM ONLY
3	0	1	1	1	1005043	ASSEMBLY, TIMER RELAY HARNESS 24V SYSTEM ONLY
4	2	1	2	1	R-K-3	RING CONNECTOR
5	1	1	1	1	94F1671	MOLEX LARGE FEMALE CONNECTOR
6	1	1	1	1	68099-4	CRIMP PIN MALE

CONNECTION PROCEDURE:

1. REMOVE THE K-2 RELAY AND FIND THE #86 CONNECTION IN THE TERMINAL BLOCK.
 - LOCATE WIRE THAT PROVIDES CONTINUITY FROM # 86 CONNECTION TO TERMINAL STRIP.
 - CONNECT FIRST TIMER RELAY # 1 WIRE TO TERMINAL STRIP LUG WITH CONTINUITY TO K-2 #86.
 - *NOTE* - IT DOES NOT MATTER WHICH TIMER RELAY YOU USE.
2. UNPLUG BOTH SHUTOFF SOLENOID MOLEX PLUGS FROM THEIR RESPECTIVE SHUTOFF SWITCHES.
 - REMOVE THE K-1 RELAY AND FIND THE # 86 CONNECTION IN THE TERMINAL BLOCK.
 - LOCATE THE MOLEX PIN CONNECTION ON BOTH MOLEX CONNECTORS. WHICH PROVIDE CONTINUITY FROM THE K-1 TO # 86 CONNECTION.
 - REMOVE THE PIN THAT PROVIDES CONTINUITY TO #86 CONNECTION IN K-1 RELAY FROM THE CONNECTOR YOU HAVE CHOSEN. (EITHER PLUG WILL WORK) CUT OFF THE CONNECTOR AND RE-CRIMP A NEW MOLEX (ITEM 4) TO THE # 3 WIRE COMING OFF THE TIMER RELAYS WITH THE EXISTING WIRE THAT WAS ORIGINALLY REMOVED.
3. DISCONNECT THE THREE WIRE ROUND TERMINAL. REMOVE THE BACK SHIELD. EXPOSING ALL THREE WIRES.
 - CUT THE SHRINK WRAP BACK APPROXIMATELY 1 INCH.
 - REMOVE PIN # 1 AND CUT OFF THE PIN. STRIP OFF THE INSULATION TO RE-CRIMP.
 - CRIMP THE OTHER # 1 TIMER RELAY WIRE ALONG WITH THE EXISTING WIRE THAT WAS ORIGINALLY REMOVED WITH A MALE PIN (ITEM 5). MAKE SURE TO USE PROPER CRIMP TOOL.
 - REINSTALL THE BACK SHIELD ONTO THE ROUND TERMINAL.
4. CONNECT THE # 2 TIMER RELAY WIRE TO GROUND.
5. INSERT DIODE CABLE ADAPTER (ITEM 1) FROM THE PUMP THREE PIN CONNECTOR TO THE AIRCRAFT CONNECTION.
6. PERFORM A RETRACTION/EXTENSION TEST TO MAKE SURE SYSTEM IS FUNCTIONING CORRECTLY.

PART NO.		SCALE		REV	
FINISH		D		A	
1700 HENRY AVE. SOUTH ST. PAUL, MN 55075		SHEET 1 OF 1		1005053	
(651) 451-1205		TOLERANCES		WIPARE, INC.	
TITLE		SIZE		SERVISE KIT 80, TIMER RELAY INSTALLATION,	
SERVISE KIT 80, TIMER RELAY INSTALLATION,		D		SINGLE PUMP HYD POWER PACK (12V & 24V)	
BREAK ALL EDGES 0.1-0.03 PROJECTION		X = ±0.05		PART NO.	
ALL DIMENSIONS ARE IN INCHES		XXX = ±0.05		1005053	
X = ±.15		X = ±.15		REV	
				A	