



WIPLINE FLOATS • SKIS • MODIFICATIONS • AIRCRAFT SALES
AVIONICS • INTERIOR • MAINTENANCE • PAINT REFINISHING

SERVICE LETTER NUMBER 160

FLOAT ANODE INSTALLATION

By: RCG	Aircraft Makes/Model(s): Cessna 208 / 208B Quest Kodiak Air Tractor AT-802 / AT-802A DeHavilland DHC-6 Series	Float Model(s): 13000A, 13000S, 10000A, 8750A, 8750S, 8000A, 7000A	Note(s): Optional Compliance Service Letter P/N 1008377
Approved: JRS			
Date: 11/3/2017			
Rev: D			

LOG OF REVISIONS

Revision	Description	Date
A	Initial release	1/4/2016
B	Added 8000 applicability and installation instructions, added list of required materials	8/10/2016
C	Changed AN340-416 1/4-20 nut to MS35649-2252 1/4-20 nut for 8000 procedure	5/8/2017
D	Document format update, added 10000A, 13000A, 13000S, 8750S applicability and installation instructions	11/3/2017

FAA approval has been obtained for technical data in this publication that affects STC or TSO design compliance

EFFECTIVITY:

This service letter applies to all floatplanes equipped with model 13000A, 13000S, 10000A, 8750A, 8750S, 8000A, and 7000A floats that have not complied with previous revisions of this service letter

COMPLIANCE:

Compliance with this service letter is optional. The quantity of anodes to be installed is per the installer's discretion

BACKGROUND:

Floats used in environments that have salty or brackish water will typically show signs of corrosion faster than floats used in fresh water. To reduce the rate of corrosion, sacrificial zinc anodes may be installed on the floats below the water line. This anode installation does not substitute for daily cleaning of the aircraft with fresh water

COMPLIANCE METHOD:

Install anode kits onto floats per applicable model Work Instruction section of this service letter. Once installed, anodes need to be inspected and cleaned every 100 hours and maintained or replaced as described in each section of the Work Instruction

APPROXIMATE SHOP HOURS:

See applicable Work Instruction for approximate shop hours

WARRANTY INFORMATION:

This service letter does not include any warranty, parts, or labor

TECHNICAL DATA:

Copies of this service letter, associated service kit, float service manual, and float parts manual are available at www.wipaire.com

1700 Henry Ave - Fleming Field (KSGS), South St. Paul, MN 55075

Phone: 651.451.1205 | Fax: 651.457.7858

www.wipaire.com



WIPLINE FLOATS • SKIS • MODIFICATIONS • AIRCRAFT SALES
 AVIONICS • INTERIOR • MAINTENANCE • PAINT REFINISHING

CONTENTS

KIT PART NUMBERS	2
WORK INSTRUCTION - 7000 AND 8750 AMPHIBIAN FLOATS	3
WATER RUDDER INSTALLATION	3
MAIN GEAR WHEEL WELL INSTALLATION	4
WORK INSTRUCTION - 8750 STRAIGHT FLOATS	6
WATER RUDDER INSTALLATION	6
CHINE INSTALLATION	6
WORK INSTRUCTION - 8000 AMPHIBIAN FLOATS	8
WATER RUDDER INSTALLATION	8
CARRY-THRU STRAP INSTALLATION	8
WORK INSTRUCTION - 10000 AMPHIBIAN FLOATS	10
WATER RUDDER INSTALLATION	10
MAIN GEAR WHEEL WELL INSTALLATION	10
WORK INSTRUCTION - 13000 AMPHIBIAN FLOATS	12
MAIN GEAR WHEEL WELL INSTALLATION	12
WORK INSTRUCTION - 13000 STRAIGHT FLOATS	13
SKEG INSTALLATION	13

KIT APPLICABILITY

KIT PART NUMBER	KIT DESCRIPTION	FLOAT MODEL APPLICABILITY
1008377-01	Kit, 7000A, 8750A Wheel Well Anode - Float Set	7000A, 8750A
1008377-02	Kit, All Models - Water Rudder Anode - Float Set	All Models (excluding 13000A, 13000S, 7000A composite rudders)
1008377-03	Kit, 8000A Wheel Well Anode - Float Set	8000A
1008377-04	Kit, 8750S Chine Anode - Float Set	8750S
1008377-05	Kit, 10000A, 13000A Wheel Well Anode - Float Set	10000A, 13000A
1008377-06	Kit, 13000S Skeg Anode - Float Set	13000S

NOTES:

- To complete an installation (water rudder locations and wheel well vicinity) for one set of floats, a total of 2 kits will be required. (Example: To complete an 8750A float set, (1) 1008377-02 kit and (1) 1008377-01 kit will need to be ordered.)
- Model 13000S and 13000A floats only require the 1008377-06 kit as there are no water rudders.
- Do not install anodes on 7000A model float water rudders if the composite water rudders are installed.



WIPLINE FLOATS • SKIS • MODIFICATIONS • AIRCRAFT SALES
AVIONICS • INTERIOR • MAINTENANCE • PAINT REFINISHING

WORK INSTRUCTION - 7000 AND 8750 AMPHIBIAN FLOATS

Showing left float installation. Mirror installation for right float

RECOMMENDED INSTALLATION MATERIALS PER FLOAT SET - MODEL 7000A AND 8750A FLOATS

ITEM	QTY	PART NUMBER	DESCRIPTION
1	2	CMR01 (or equivalent)	1 7/8" Anode with Provided 10-32 Hardware
2	2	CMR02 (or equivalent)	2 13/16" Anode with Provided 1/4-20 Hardware
3	2	1008367	Anode Bracket
4	10	AN526-632R6	Screw

Two different size anodes are offered for installation:

- CMR01 (or equivalent), outside diameter of 1 7/8", weight of 0.28 lb., is recommended for water rudder installation
- CMR02 (or equivalent), outside diameter of 2 13/16", weight of 0.94 lb., is recommended for installation in the main gear wheel well

WATER RUDDER INSTALLATION

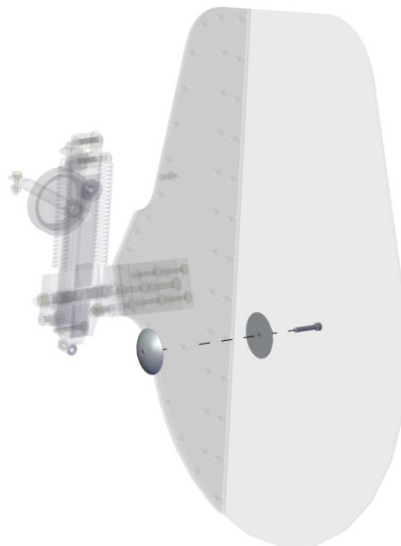
Approximate water rudder installation time on 1 float: 1 hour

1. Identify the location that the anode will be installed. Make sure that the anode will be below the water line with the rudder water down and when the floats are in the water with a minimally loaded plane
2. Position CMR01 (or equivalent) anode in location of installation and outline the anode mounting surface on both sides
3. Remove any paint from the surface previously marked

NOTE: The anode needs to be mounted to bare metal so that it can complete the electrical circuit

4. Drill a 7/32" hole in center of the marked surface on the water rudder
5. Install anode to each side of the water rudder using provided hardware as shown

NOTE: Do not install anodes on 7000A model float water rudders if the composite water rudders are installed. Reference service letter 135



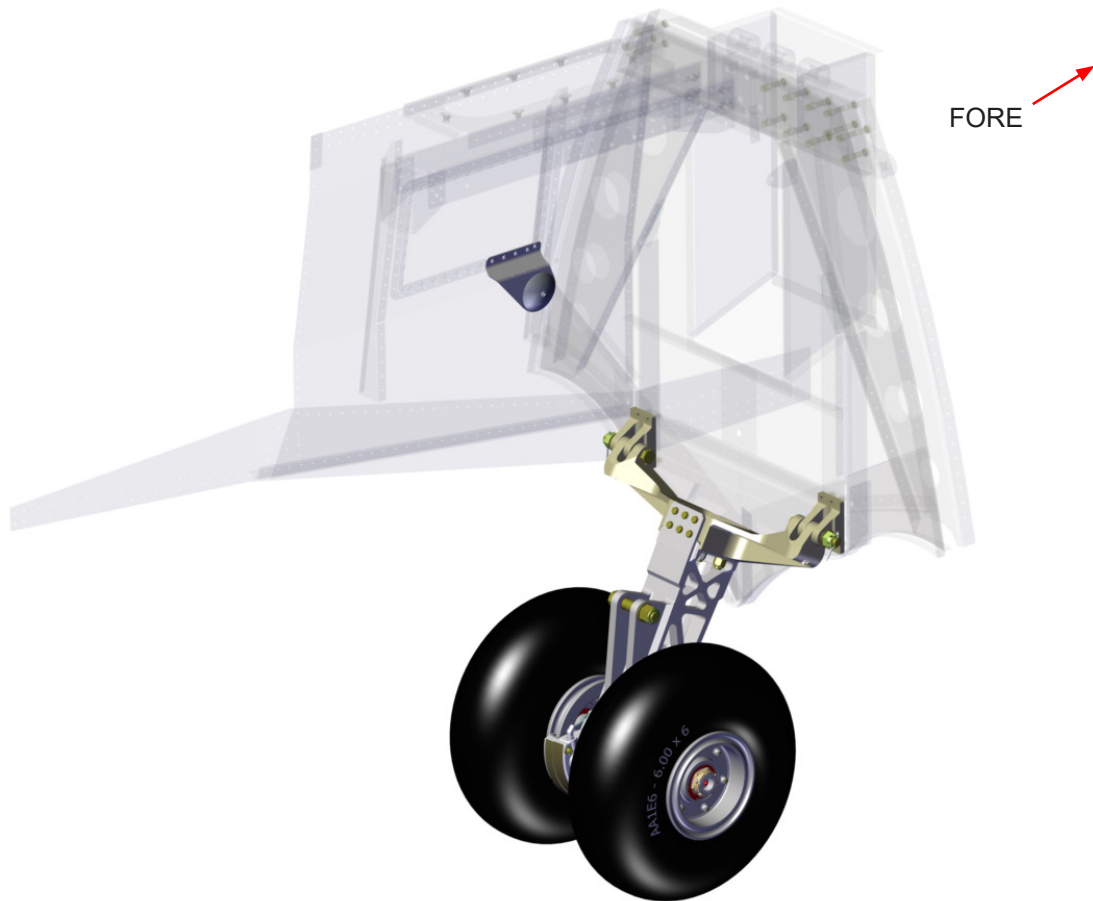
NOTE: Do not paint the anodes after installation. They must remain unfinished

6. Trim bolt shaft if needed so no more than about 3 threads protrude past the anode
7. Routinely clean and inspect the anodes and surrounding areas for signs of corrosion. Replace anodes when they decrease to one-third their original size

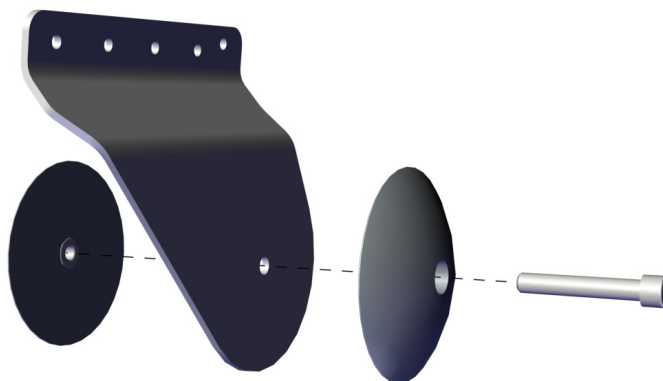
MAIN GEAR WHEEL WELL INSTALLATION

Approximate main gear wheel well installation time on 1 float: 1 hour

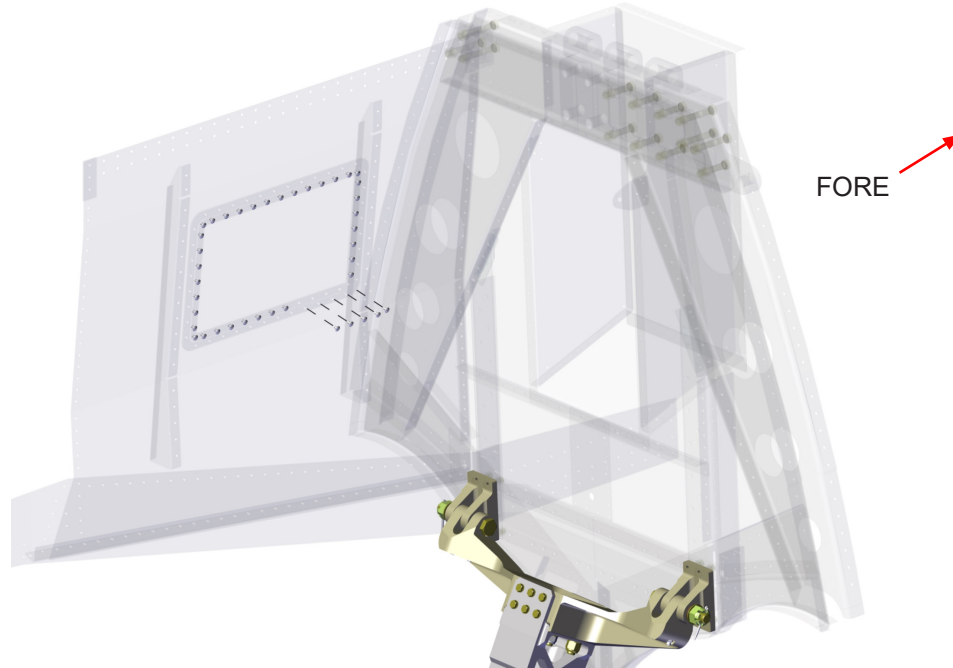
1. Identify the location on the inboard wheel access cover in which the anode will be installed. Make sure that the anode will be below the water line when the floats are in the water with a minimally loaded plane



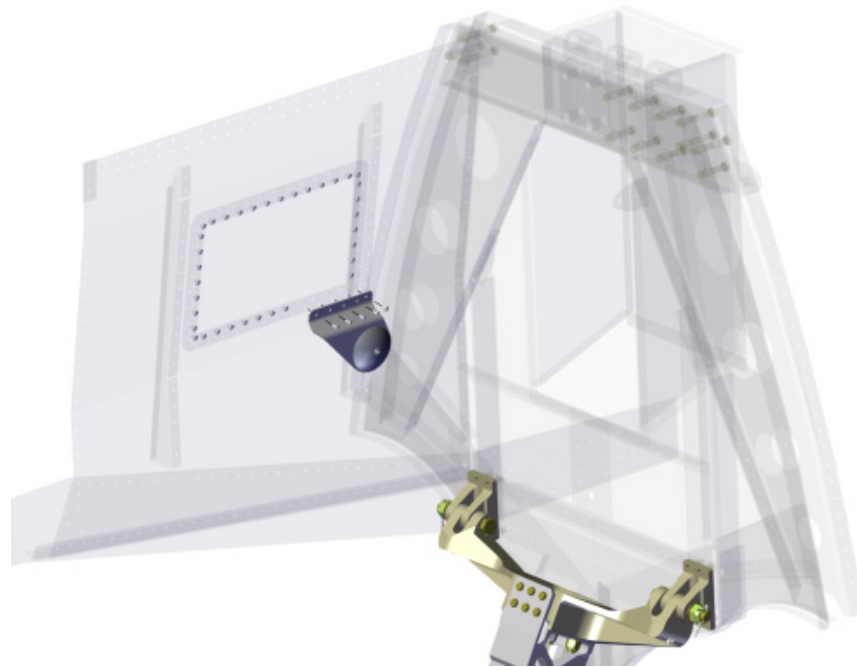
2. Assemble CMR02 (or equivalent) anode to bracket as shown



3. Remove the existing (5) AN526-632R4 screws on the inboard wheel access cover as shown



4. Install bracket with anode as shown with (5) AN526-632R6 screws



NOTE: Do not paint the anodes after installation. They must remain unfinished

5. Seal the access panel mounting hardware after installation
6. Confirm that the anodes are below the water line when the floats are in the water with a minimally loaded plane
7. Routinely clean and inspect the anodes and surrounding areas for signs of corrosion. Replace anodes when they decrease to one-third their original size



WIPLINE FLOATS • SKIS • MODIFICATIONS • AIRCRAFT SALES
 AVIONICS • INTERIOR • MAINTENANCE • PAINT REFINISHING

WORK INSTRUCTION - 8750 STRAIGHT FLOATS

Showing left float installation. Mirror installation for right float

RECOMMENDED INSTALLATION MATERIALS PER FLOAT SET - MODEL 8750S FLOATS

ITEM	QTY	PART NUMBER	DESCRIPTION
1	2	CMR01 (or equivalent)	1 7/8" Anode with Provided 10-32 Hardware
2	2	CMR02 (or equivalent)	2 13/16" Anode with Provided 1/4-20 Hardware
3	4	13S01150-213	Anode Washer

Two different size anodes are offered for installation:

- CMR01 (or equivalent), outside diameter of 1 7/8", weight of 0.28 lb., is recommended for water rudder installation
- CMR02 (or equivalent), outside diameter of 2 13/16", weight of 0.94 lb., is recommended for installation on the inboard chine doubler

WATER RUDDER INSTALLATION

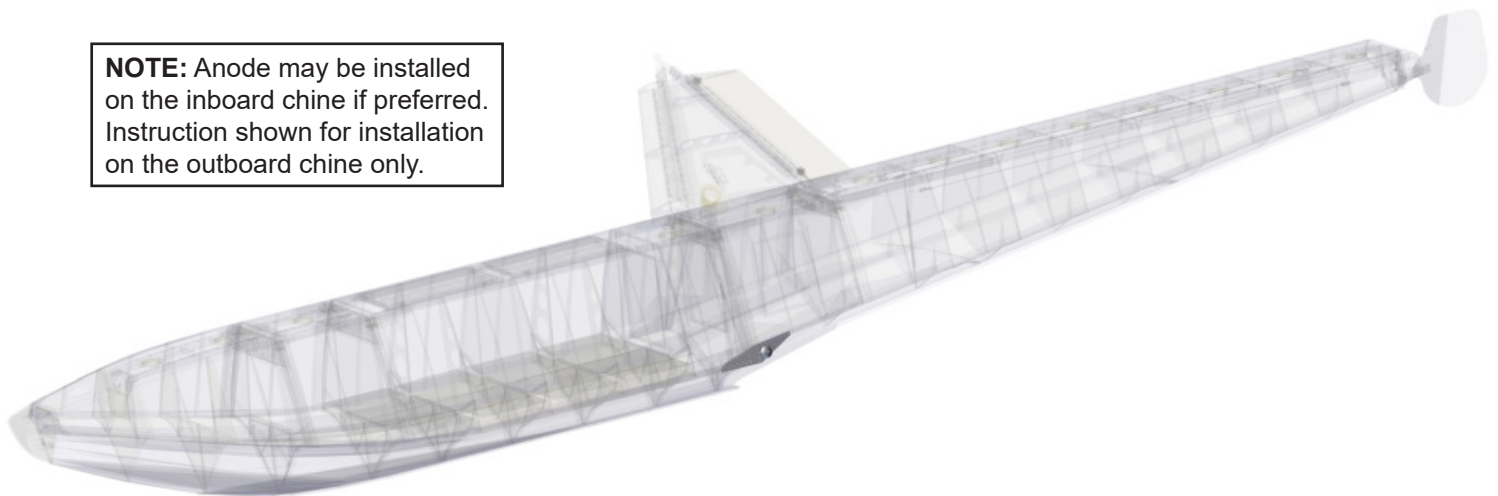
1. Use the [7000 and 8750 amphibian floats water rudder installation section](#) as reference to install the water rudder anode on the 8750S water rudder

CHINE INSTALLATION

Approximate chine installation time on 1 float: 1 hour

1. Identify the location on the inboard chine doubler in which the anode will be installed. Make sure that the anode will be below the water line when the floats are in the water with a minimally loaded plane

NOTE: Anode may be installed on the inboard chine if preferred. Instruction shown for installation on the outboard chine only.



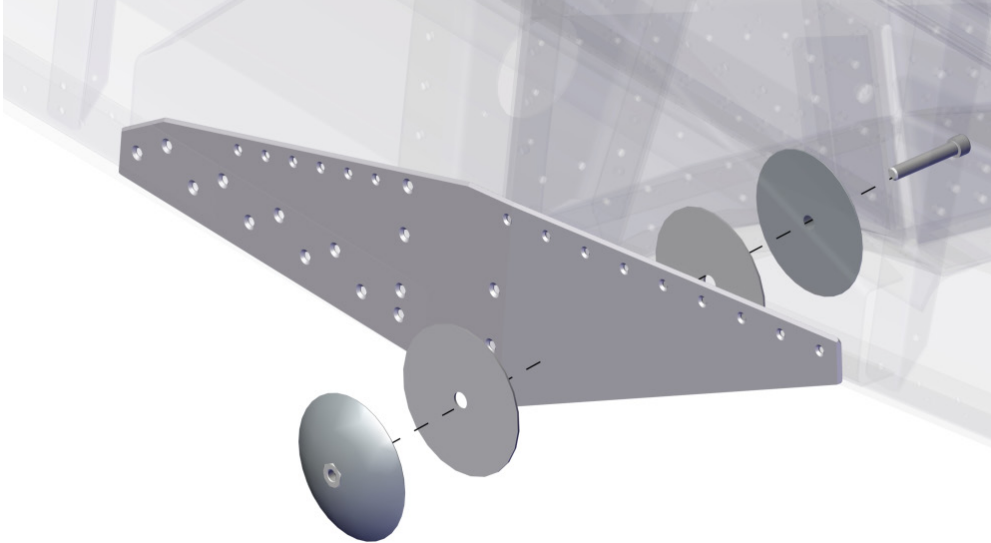
NOTE: The anode may slightly hang below the chine doubler. The overhanging material may be ground away later in the instruction

2. Position CMR02 (or equivalent) anode on the outboard surface of the chine doubler. Outline the anode mounting surface on the outboard surface only
3. Remove any paint from the surface previously marked

NOTE: The anode needs to be mounted to bare metal so that it can complete the electrical circuit

4. Drill a 1/4" hole in center of the marked surface on the chine doubler

5. Install anode and anode washers to each side of the chine doubler using provided hardware as shown



NOTE: Anode may be installed in the opposite direction if preferred so the bolt is inserted from the outboard side

6. Trim bolt shaft if needed so no more than about 3 threads protrude past the anode
7. If preferred, grind anodes and anode washers so no excess material is hanging below the chine

NOTE: Do not paint the anodes after installation. They must remain unfinished

8. Confirm that the anodes are below the water line when the floats are in the water with a minimally loaded plane
9. Routinely clean and inspect the anodes and surrounding areas for signs of corrosion. Replace anodes when either washer begins to show signs of corrosion



WIPLINE FLOATS • SKIS • MODIFICATIONS • AIRCRAFT SALES
AVIONICS • INTERIOR • MAINTENANCE • PAINT REFINISHING

WORK INSTRUCTION - 8000 AMPHIBIAN FLOATS

Showing left float installation. Mirror installation for right float

RECOMMENDED INSTALLATION MATERIALS PER FLOAT SET - MODEL 8000 FLOATS

ITEM	QTY	PART NUMBER	DESCRIPTION
1	2	CMR01 (or equivalent)	1 7/8" Anode with Provided 10-32 Hardware
2	1	CMR02 (or equivalent)	2 13/16" Anode with Provided 1/4-20 Hardware
3	2	13S01150-213	Anode Washer
4	2	AN970-4 1/4-20	Wide Area Washer
5	1	NAS1352-422 1/4-20	Socket Head Cap Screw
6	1	MS35649-2252 1/4-20	Nut

Two different size anodes are offered for installation:

- CMR01 (or equivalent), outside diameter of 1 7/8", weight of 0.28 lb., is recommended for rudder installation
- CMR02 (or equivalent), outside diameter of 2 13/16", weight of 0.94 lb., is recommended for installation on the outboard carry-thru strap of the main gear wheel well

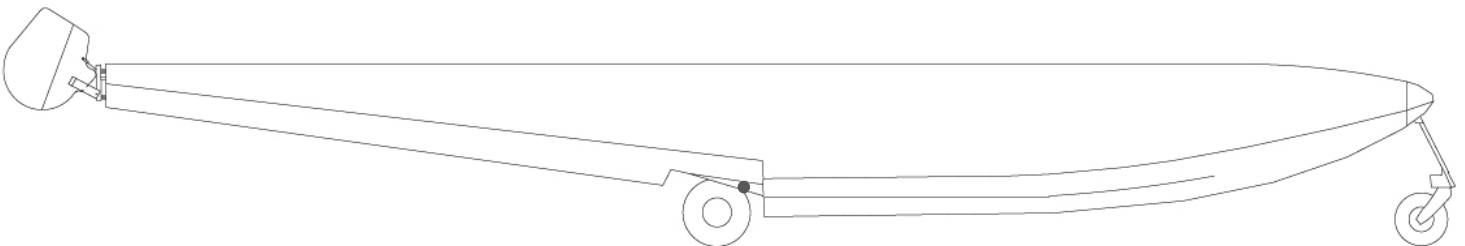
WATER RUDDER INSTALLATION

1. Use the [7000 and 8750 amphibian floats water rudder installation section](#) as reference to install the water rudder anode on the 8000A water rudder

CARRY-THRU STRAP INSTALLATION

Approximate carry-thru strap installation time on 1 float: 1 hour

1. Identify the location on the outboard surface of the inboard carry-thru strap in which the anode will be installed. Make sure that the anode will be below the water line when the floats are in the water with a minimally loaded plane

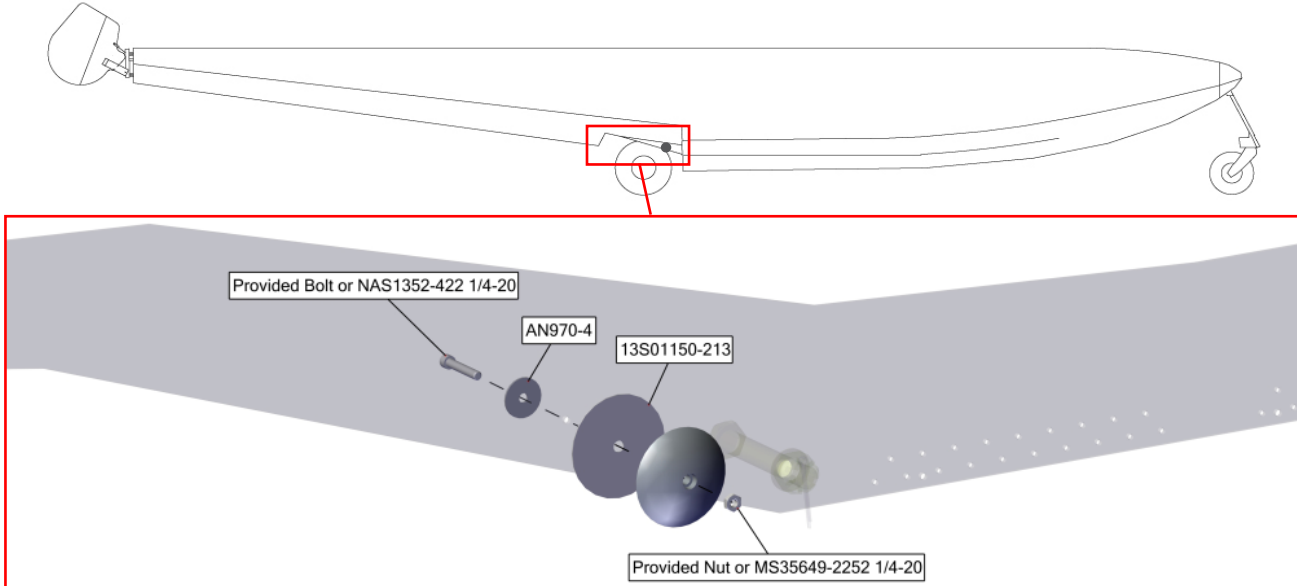


NOTE: The anode may slightly hang below the carry-thru strap. The overhanging material may be ground away later in the instruction

NOTE: Anode will only be installed on outboard surface of the inboard carry-thru strap

2. Disassemble CMR02 (or equivalent) completely

- Position CMR02 (or equivalent) anode on the outboard surface of the inboard carry-thru strap and verify there will be adequate clearance between the anode mounting hardware and the main landing gear. Outline the anode mounting surface on the outboard surface only



- Remove any paint from the surface previously marked

NOTE: The anode needs to be mounted to bare metal so that it can complete the electrical circuit

- Drill a 1/4" hole in center of the marked surface on the carry-thru strap
- Install 1 of the anodes and an anode washer to the outboard surface of the carry-thru strap as shown

NOTE: Verify the anode washer is directly inbetween the anode and the carry-thru strap

- Trim bolt shaft if needed so no more than about 3 threads protrude past the anode
- If preferred, grind anode and anode washer so no excess material is hanging below the carry-thru strap



NOTE: Do not paint the anodes after installation. They must remain unfinished

- Confirm that the anodes are below the water line when the floats are in the water with a minimally loaded plane
- Routinely clean and inspect the anodes and surrounding areas for signs of corrosion. Replace anodes when either washer begins to show signs of corrosion

WORK INSTRUCTION - 10000 AMPHIBIAN FLOATS

Showing left float installation. Mirror installation for right float

RECOMMENDED INSTALLATION MATERIALS PER FLOAT SET - MODEL 10000A FLOATS

ITEM	QTY	PART NUMBER	DESCRIPTION
1	2	CMR01 (or equivalent)	1 7/8" Anode with Provided 10-32 Hardware
2	2	CMR02 (or equivalent)	2 13/16" Anode with Provided 1/4-20 Hardware
3	2	1009461	Anode Bracket
4	2	MS16997-62	Socket Head Cap Screw

Two different size anodes are offered for installation:

- CMR01 (or equivalent), outside diameter of 1 7/8", weight of 0.28 lb., is recommended for water rudder installation
- CMR02 (or equivalent), outside diameter of 2 13/16", weight of 0.94 lb., is recommended for installation in the main gear wheel well

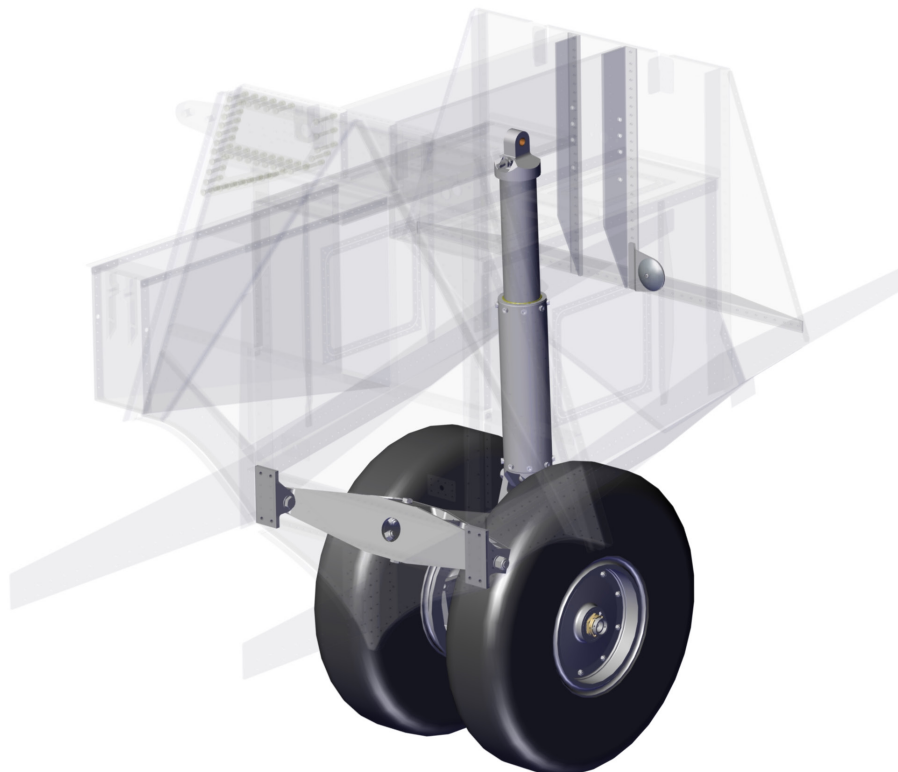
WATER RUDDER INSTALLATION

1. Use the [7000 and 8750 amphibian floats water rudder installation section](#) as reference to install the water rudder anode on the 10000A water rudder

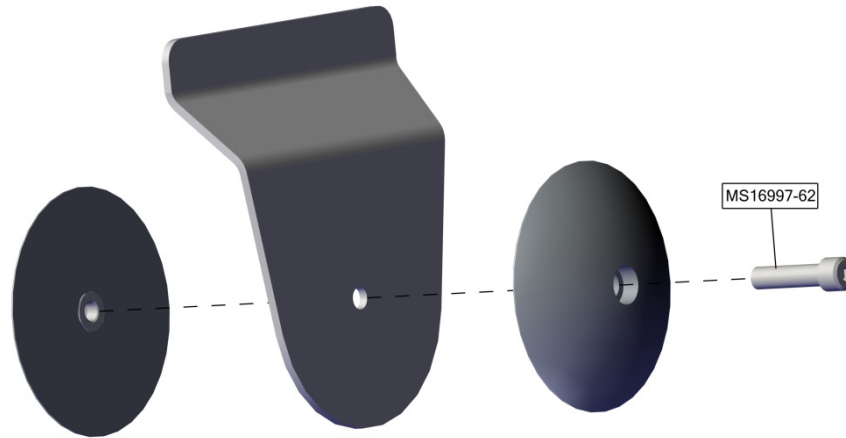
MAIN GEAR WHEEL WELL INSTALLATION

Approximate main gear wheel well installation time on 1 float: 3 hours

1. Identify the location on the bulkhead 17 slide tube attach angle in which the anode will be installed. Make sure that the anode will be below the water line when the floats are in the water with a minimally loaded plane



- Assemble CMR02 (or equivalent) anode to bracket as shown using MS16997-62 socket head screw



- Remove small top deck inspection cover aft of bulkhead 17
- Align bracket and attached CMR02 (or equivalent) anode on bulkhead 17 slide tube attach angle and backdrill through bracket and 5 rivets as shown



- Rivet bracket into place

NOTE: Do not paint the anodes after installation. They must remain unfinished

- Reinstall top deck inspection cover
- Confirm that the anodes are below the water line when the floats are in the water with a minimally loaded plane
- Routinely clean and inspect the anodes and surrounding areas for signs of corrosion. Replace anodes when they decrease to one-third their original size



WIPLINE FLOATS • SKIS • MODIFICATIONS • AIRCRAFT SALES
AVIONICS • INTERIOR • MAINTENANCE • PAINT REFINISHING

WORK INSTRUCTION - 13000 AMPHIBIAN FLOATS

Showing left float installation. Mirror installation for right float

RECOMMENDED INSTALLATION MATERIALS PER FLOAT SET - MODEL 13000A FLOATS

ITEM	QTY	PART NUMBER	DESCRIPTION
1	2	CMR02 (or equivalent)	2 1 ³ / ₁₆ " Anode with Provided 1/4-20 Hardware
2	2	1009461	Anode Bracket
3	2	MS16997-62	Socket Head Cap Screw

One size anode is offered for installation:

- CMR02 (or equivalent), outside diameter of 2 1³/₁₆", weight of 0.94 lb., is recommended for installation in the main gear wheel well

MAIN GEAR WHEEL WELL INSTALLATION

1. Use the [10000 amphibian floats main gear wheel well installation section](#) as reference to install the main gear wheel well anode in the 13000A main gear wheel well



WIPLINE FLOATS • SKIS • MODIFICATIONS • AIRCRAFT SALES
 AVIONICS • INTERIOR • MAINTENANCE • PAINT REFINISHING

WORK INSTRUCTION - 13000 STRAIGHT FLOATS

Showing left float installation. Mirror installation for right float

RECOMMENDED INSTALLATION MATERIALS PER FLOAT SET - MODEL 13000S FLOATS

ITEM	QTY	PART NUMBER	DESCRIPTION
1	2	CMR02 (or equivalent)	2 1 ³ / ₁₆ " Anode with Provided 1/4-20 Hardware
2	4	13S01150-213	Anode Washer

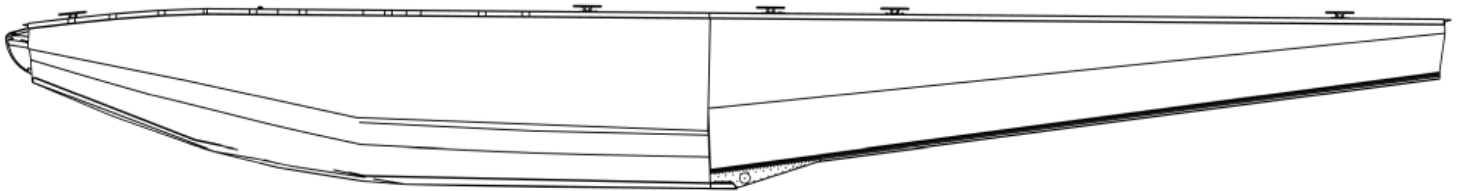
One size anode is offered for installation:

- CMR02 (or equivalent), outside diameter of 2 1³/₁₆" , weight of 0.94 lb., is recommended for installation on the skag

SKAG INSTALLATION

Approximate skag installation time on 1 float: 1 hour

1. Identify the location on the skag in which the anode will be installed and position CMR02 (or equivalent) anode on the skag where shown. Make sure that the anode will be below the water line when the floats are in the water with a minimally loaded plane

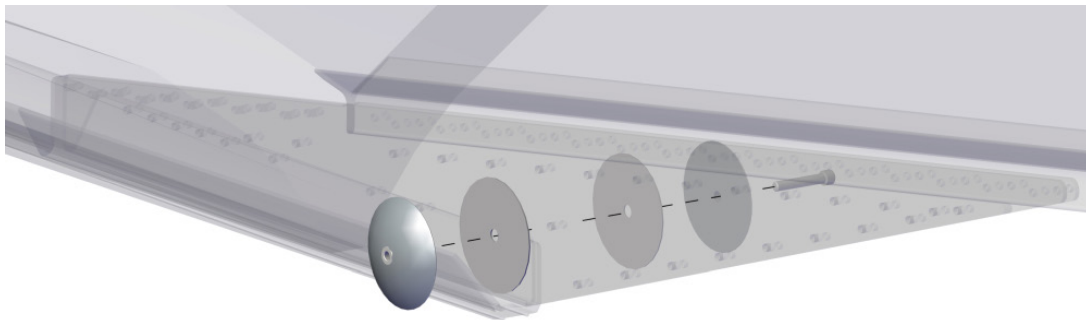


2. Outline the anode mounting surface on both sides of the skag
3. Remove any paint from the surface previously marked

NOTE: The anode needs to be mounted to bare metal so that it can complete the electrical circuit

4. Drill a 1/4" hole in center of the marked surface on the skag
5. Install anode to skag as shown

NOTE: Verify an anode washer is directly in between the anode and the skag on both sides. Modify washer around rivets if needed so anode washer is flush with skag



NOTE: Do not paint the anodes after installation. They must remain unfinished

6. Trim bolt shaft if needed so no more than about 3 threads protrude past the anode
7. Routinely clean and inspect the anodes and surrounding areas for signs of corrosion. Replace anodes when either washer begins to show signs of corrosion



WIPLINE FLOATS • SKIS • MODIFICATIONS • AIRCRAFT SALES
AVIONICS • INTERIOR • MAINTENANCE • PAINT REFINISHING

NOTES:

1. Upon completion of inspection, enter information in Aircraft Logbook for completion of Wipaire Service Letter 160
2. Once service letter is accomplished, please visit www.wipaire.com and update your aircraft service letter/kit record using the link found on the Customer Support dropdown menu under "Update Service Letter & Kit Compliance Status"