



WIPLINE FLOATS • SKIS • MODIFICATIONS • AIRCRAFT SALES  
AVIONICS • INTERIOR • MAINTENANCE • PAINT REFINISHING

---

## **WIPLINE FLOATS**

### **MODEL 2100**

### **PARTS MANUAL**



## **AMERICAN CHAMPION SCOUT (8GCBC)**

1700 Henry Ave – Fleming Field (KSGS), South St. Paul, MN 55075  
Ph: 651.451.1205 Fax: 651.457.7858  
[www.wipaire.com](http://www.wipaire.com)

THIS PAGE INTENTIONALLY LEFT BLANK

## TABLE OF CONTENTS

| <u>SECTION</u>  | <u>PAGE</u> |
|---|-------------|
| TABLE OF CONTENTS.....                                      | 3           |
| FLOAT PART SALES DEPT. OPERATIONS .....                     | 5           |
| PARTS ORDERING .....  | 5           |
| DAMAGED GOODS .....   | 5           |
| RETURNED PARTS.....   | 6           |
| ORDER SHORTAGES .....                                       | 6           |
| CREDIT POLICY.....  | 6           |
| LIST OF ABBREVIATIONS.....                                  | 6           |
| NEW CUSTOMER INFORMATION.....                               | 7           |
| HULL ASSEMBLY – AMPHIBIAN.....                              | 9           |
| HULL ASSEMBLY – SEAPLANE .....                              | 15          |
| TOP SKIN – HULL – AMPHIBIAN .....                           | 21          |
| TOP SKIN – HULL – SEAPLANE .....                            | 25          |
| WHEELWELL ASSEMBLY – AMPHIBIAN .....                        | 29          |
| EXTRUSIONS – HULL - AMPHIBIAN.....                          | 31          |
| EXTRUSIONS – HULL – SEAPLANE.....                           | 33          |
| PUMPER TUBE INSTALLATION.....                               | 35          |
| INSTALLATION WATER RUDDER.....                              | 37          |
| ASSEMBLY – NOSE GEAR RETRACTION.....                        | 41          |
| ASSEMBLY – NOSE GEAR – LOWER.....                           | 45          |
| ASSEMBLY – NOSE WHEEL (GROVE) .....                         | 49          |
| ASSEMBLY – NOSE WHEEL (PARKER) .....                        | 51          |
| INSTALLATION – MAIN GEAR RETRACTION.....                    | 53          |
| ASSEMBLY – MAIN GEAR WHEEL.....                             | 57          |
| ASSEMBLY – MAIN GEAR WHEEL – GROVE/WIPAIRE .....            | 61          |
| INSTALLATION – STRUTS, WIRES, AND SPREADER BARS SCOUT ..... | 65          |
| INSTALLATION – STEERING AND RETRACT SYSTEM SCOUT .....      | 69          |
| INSTALLATION – HYDRAULIC SYSTEM SCOUT .....                 | 73          |
| ASSEMBLY – HYDRAULIC PUMP SCOUT.....                        | 77          |
| HYDRAULIC SCHEMATIC.....                                    | 81          |
| ELECTRICAL SCHEMATIC .....                                  | 85          |
| GEAR CONTROL (ROUND).....                                   | 87          |
| GEAR CONTROL (RECTANGLE) .....                              | 89          |
| HYDRAULIC PUMP .....  | 91          |

Wipline Model 2100 Parts Manual

Log of Revisions

| Revision | Pages Effected         | Description  | Date      |
|----------|------------------------|--|-----------|
| A        | 54-59                  | ADDED GROVE –CLEVELAND DRAWING AND PARTS LIST AND REVISED TABLE OF CONTENTS.   | 12/12/05  |
| B        | 41, 53                 | NOSE AND MAIN GEAR RETRACT CYLINDER P/N CHANGED.   | 3/20/06   |
| C        | 19-25                  | Changed float deck P/Ns.   | 8/3/06    |
| D        | 51                     | Changed P/Ns for Main Gear Bushings<br>Added part umber and revision to all pages  | 10/31/06  |
| E        | 44, 51                 | Hydraulic cylinder part number change.   | 7/21/07   |
| F        | Multiple pages updated | Many pages changed with updated part numbers for parts. New figure added for water rudder.   | 9/1/10    |
| G        | ALL                    | Reformatted entire manual, update to Part Sales Dept page, added new warranty and customer information, updated hyd. pump, gear selector, electrical schematic images and BOMS, corrected multiple clerical errors and incorrect part/item callouts, added Grove Nose wheel Added Grove Nose Wheel, washer 415067 was 359071 | 5/28/2013 |
| H        | 3                      | Removed Warranty Claim Form  | 3/31/16   |
|          |                        |  |           |
|          |                        |  |           |
|          |                        |  |           |
|          |                        |  |           |

You may also look at the latest parts manual at [www.wipaire.com](http://www.wipaire.com).

## FLOAT PART SALES DEPT. OPERATIONS

Hours: 7:00 AM – 6:00 PM, Monday through Friday  
Central U.S. Time

Phone: 651-306-0459

Fax: 651-306-0666

Email: [customerservice@wipaire.com](mailto:customerservice@wipaire.com)

Website: [www.wipaire.com](http://www.wipaire.com)

### **Shipping Schedule:**

In-stock orders received before 3:00 PM CST ship the same day. Orders received after this time may be assessed an AOG fee for special priority handling.

As we are primarily a manufacturer, our stocks can be rapidly depleted by production requirements. Therefore, prices and availability are subject to change at any time. It is our intent to provide courteous and prompt service of your needs. Please let us know of any problem or concerns so that changes in these procedures can be a benefit to all.

## ***PARTS ORDERING***

Purchase orders should include

1. P.O. Number
2. Name of person placing order
3. Invoicing information:
  - I. Customer name – company or individual
    - i. Address
    - ii. Phone and fax number
4. Shipping information:
  - I. Address (if different from invoice address)
  - II. Method of shipment/preferred carrier
5. Aircraft model, float model and serial numbers
6. Wipaire part number; name; type, e.g. left or right; quantity
7. Payment method: VIS A, MasterCard, COD (U.S. customers only). Pre-payment by check or wire transfer, open account (see credit policy section).

## ***DAMAGED GOODS***

Inspect all parts upon receipt. Damages to parts in transit must be filed as a claim against the carrier.

## **RETURNED PARTS**

Written explanation of reason for return must accompany parts, including invoice number of original shipment. Shipping charges on returned parts must be prepaid or the shipment will be refused.

## **ORDER SHORTAGES**

Check shipment against delivery slip immediately. All claims for any shortages should be made within three (3) days after order receipt.

## **CREDIT POLICY**

Parts will be shipped on open account, net 30 days, to Wipaire-approved credit customers only. A balance due over 60 days will result in no shipments. Wipaire, Inc reserves the right to send any order C.O.D.

## **LIST OF ABBREVIATIONS**

All references in this manual to LEFT and RIG HT are from the perspective of the pilot's seat with the floats fully installed and ready for floatplane operation. The following is a list of abbreviations that may appear in the description nomenclature fields of this manual:

|         |             |        |               |
|---------|-------------|--------|---------------|
| AB      | Afterbody   | Inbd.  | Inboard       |
| Amphib. | Amphibious  | Lg.    | Large.        |
| AR      | As Required | Lt.    | Left          |
| Assy.   | Assembly    | Lwr.   | Lower         |
| Brkt.   | Bracket     | Opt.   | Optional      |
| Btm.    | Bottom      | Otbd.  | Outboard      |
| Bulk.   | Bulkhead    | Reinf. | Reinforcement |
| Ctr.    | Center      | Rr.    | Rear          |
| Cyl.    | Cylinder    | Rt.    | Right         |
| Ft.     | Front       | Sm.    | Small         |
| Ftg.    | Fitting     | SN     | Serial Number |
| Fus.    | Fuselage    | Spr.   | Spreader      |
| Fwd.    | Forward     | Upr.   | Upper         |
| Horiz.  | Horizontal  | Vert.  | Vertical      |
| Hyd.    | Hydraulic   | W.W.   | Wheel Well    |



NEW CUSTOMER INFORMATION

|   |              |
|---|--------------|
| <b>Customer Name</b>                            |              |
| <b>Billing Address</b>                          |              |
| <b>Shipping Address</b>                         |              |
| Phone Number                                    | Fax Number   |
| <b>Purchasing Contact</b>                       | Phone Number |
| E-Mail  | Fax Number   |
| <b>Accounts Payable Contact</b>                 | Phone Number |
| E-Mail  | Fax Number   |
| Type(s) of Aircraft Owned or Maintained         |              |
| Model(s) of Floats and Skis Owned or Maintained |              |
| FedEx and/or UPS account number (if applicable) |              |

Please return to Wipaire Customer Service:

Fax 651-306-0666

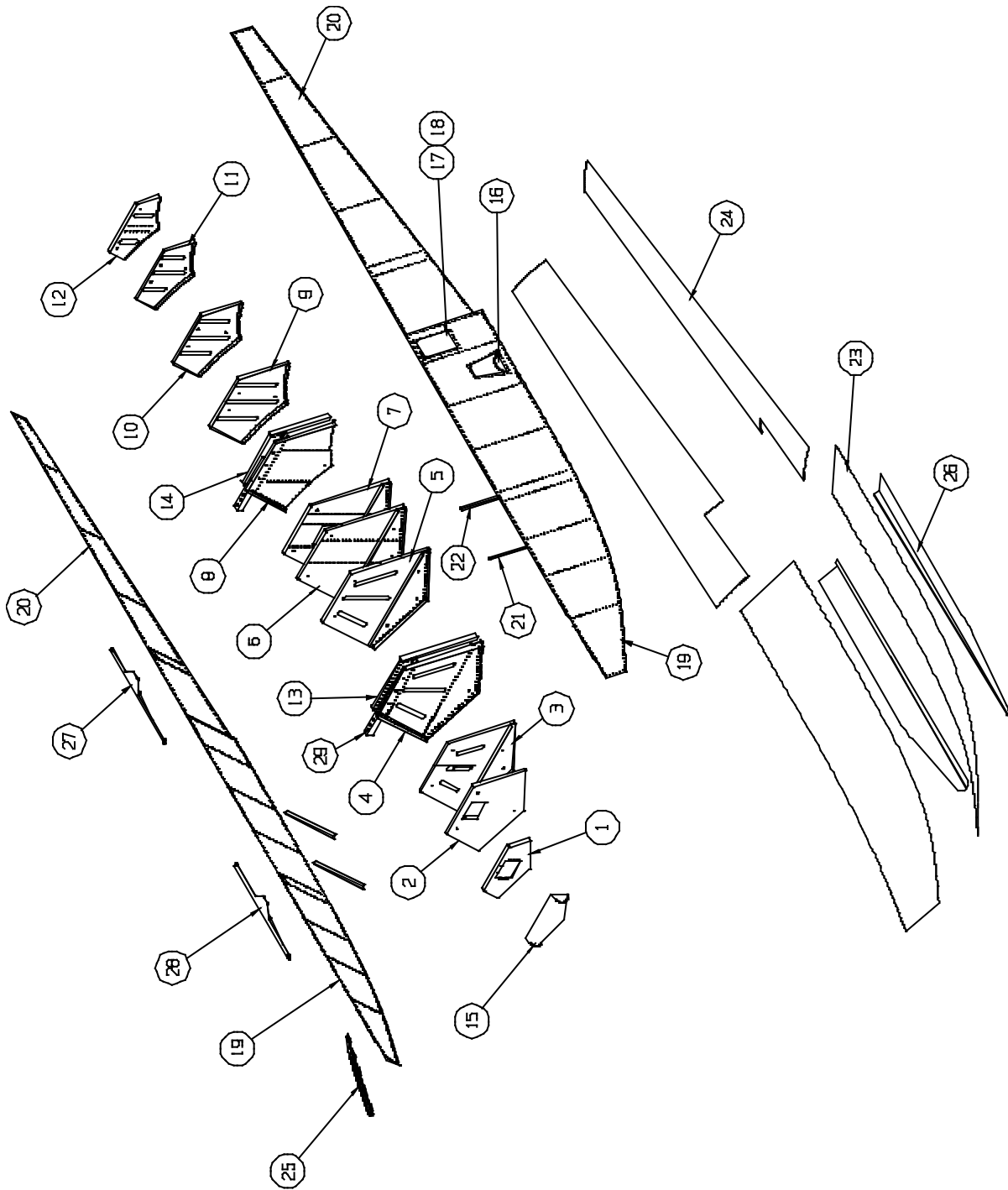
Phone 651-306-0459

[CustomerService@wipaire.com](mailto:CustomerService@wipaire.com)

THIS PAGE INTENTIONALLY LEFT BLANK



WIPLINE MODEL 2100 FLOAT PARTS MANUAL



HULL ASSEMBLY – AMPHIBIAN  
FIGURE 1

WIPLINE MODEL 2100 FLOAT PARTS MANUAL

HULL ASSEMBLY - AMPHIBIAN, FIGURE 1

| <u>REF NO.</u> | <u>NO.</u> | <u>REQ.</u> | <u>PART DESCRIPTION</u>  | <u>PART NO.</u> |
|----------------|------------|-------------|--------------------------|-----------------|
| 1              | 1          |             | BULKHEAD #1              | 21A01163-067    |
| 2              | 1          |             | ASSY BULKHEAD #3         | 21A01000-265    |
|                | 1          |             | BULKHEAD                 | 21A01158-184    |
|                | 1          |             | ANGLE – NOSE BOX ATTACH  | 21A01326-006    |
|                | 1          |             | ANGLE – NOSE BOX ATTACH  | 21A01326-005    |
| 3              | 1          |             | ASSY BULKHEAD #4         | 21A01000-261    |
|                | 1          |             | BULKHEAD – MAIN          | 21A01158-174    |
|                | 1          |             | SUPPORT – BULKHEAD LOWER | 21A01158-175    |
|                | 1          |             | CLAMP, PUMP OUT TUBE     | 3A01158-003     |
| 4              | 1          |             | ASSY BULKHEAD #5         | 21A01000-253    |
|                | 1          |             | BULKHEAD - MAIN          | 21A01158-178    |
|                | 1          |             | ANGLE – SIDE L.          | 21A01326-007    |
|                | 1          |             | ANGLE – SIDE R.          | 21A01326-008    |
|                | 1          |             | PANEL – SPR. BAR         | 21A01163-066    |
|                | 1          |             | SUPPORT – BULKHEAD LOWER | 21A01158-176    |
|                | 1          |             | CLAMP, PUMP OUT TUBE     | 3A01158-003     |
| 5              | 1          |             | ASSY BULKHEAD #6         | 21A01000-252    |
|                | 1          |             | BULKHEAD – MAIN          | 21A01158-189    |
|                | 1          |             | SUPPORT – BULKHEAD LOWER | 21A01158-177    |
|                | 1          |             | GROMMET                  | MS35489-19      |
| 6              | 1          |             | ASSY BULKHEAD #7 L.      | 21A01000-267    |
|                | 1          |             | BULKHEAD - MAIN          | 21A01158-181    |
|                | 1          |             | SUPPORT – BULKHEAD LOWER | 21A01158-187    |
|                | 1          |             | ASSY BULKHEAD #7 R       | 21A01000-266    |
|                | 1          |             | BULKHEAD - MAIN          | 21A01158-182    |
|                | 1          |             | SUPPORT – BULKHEAD LOWER | 21A01158-188    |
| 7              | 1          |             | ASSY BULKHEAD #8 L.      | 21A01000-263    |
|                | 1          |             | BULKHEAD - MAIN          | 21A01158-191    |
|                | 1          |             | SUPPORT – BULKHEAD LOWER | 21A01158-193    |

WIPLINE MODEL 2100 FLOAT PARTS MANUAL

HULL ASSEMBLY - AMPHIBIAN, FIGURE 1

| <u>REF NO.</u> | <u>NO.</u> | <u>REQ.</u> | <u>PART DESCRIPTION</u>     | <u>PART NO.</u> |
|----------------|------------|-------------|-----------------------------|-----------------|
|                | 1          |             | ANGLE – A.B. SKIN ATTACH L. | 21A01158-179    |
|                | 1          |             | ANGLE – A.B. SKIN ATTACH R. | 21A01158-180    |
|                | 1          |             | ASSY BULKHEAD #8 R          | 21A01000-264    |
|                | 1          |             | BULKHEAD - MAIN             | 21A01158-190    |
|                | 1          |             | SUPPORT – BULKHEAD LOWER    | 21A01158-192    |
|                | 1          |             | ANGLE – A.B. SKIN ATTACH L. | 21A01158-179    |
|                | 1          |             | ANGLE – A.B. SKIN ATTACH R. | 21A01158-180    |
| 8              | 1          |             | ASS'Y – BULKHEAD #10        | 21A01000-262    |
|                | 1          |             | BULKHEAD - MAIN             | 21A01158-169    |
|                | 1          |             | ANGLE SIDE L.               | 21A01326-011    |
|                | 1          |             | ANGLE SIDE R.               | 21A01326-012    |
|                | 1          |             | PANEL – SPR. BAR            | 21A01163-066    |
| 9              | 1          |             | BULKHEAD #11                | 21A01000-395    |
| 10             | 1          |             | BULKHEAD #12                | 21A01000-396    |
| 11             | 1          |             | BULKHEAD #13                | 21A01000-397    |
| 13             | 1          |             | ASS'Y SPR. BAR PANEL FWD    | 21A01000-260    |
|                | 1          |             | PANEL – SPR. BAR            | 21A01163-065    |
|                | 1          |             | ANGLE – SIDE L.             | 21A01326-013    |
|                | 1          |             | ANGLE – SIDE R.             | 21A01326-014    |
|                | 1          |             | BOLT                        | AN4-5A          |
|                | 1          |             | WASHER                      | NAS1149F0463P   |
|                | 1          |             | NUT                         | MS21044N4       |
| 14             | 1          |             | ASS'Y SPR. BAR PANEL AFT    | 21A01000-259    |
|                | 1          |             | PANEL – SPR. BAR            | 21A01163-065    |
|                | 1          |             | ANGLE – SIDE L.             | 21A01326-009    |
|                | 1          |             | ANGLE – SIDE R.             | 21A01326-010    |
|                | 1          |             | BOLT                        | AN4-5A          |
|                | 1          |             | WASHER                      | NAS1149F0463P   |
|                | 1          |             | NUT                         | MS21044N4       |

WIPLINE MODEL 2100 FLOAT PARTS MANUAL

HULL ASSEMBLY - AMPHIBIAN, FIGURE 1

| <u>REF NO.</u> | <u>NO.</u> | <u>REQ.</u> | <u>PART DESCRIPTION</u>                             | <u>PART NO.</u> |
|----------------|------------|-------------|---|-----------------|
| 15             | 1          |             | NOSE BUMPER   | 21A01000-295    |
| 16             | 1          |             | STEP – BOARDING                                     | 3A01000-005     |
| 17             | 2          |             | REINFORCEMENT – COVER                               | 21A01156-126    |
| 18             | 2          |             | COVER – INSP ASS'Y                                  | 21A01000-427    |
|                | 2          |             | COVER – INSP.                                       | 21A01004-101    |
|                | 2          |             | GASKET  | 21A01567-012    |
|                | 56         |             | SCREW – ATTACH                                      | AN526-632R6     |
| 19             | 1          |             | SIDE SKIN – STEP TO BOW L. OUTBR'D                  | 21A01004-093    |
|                | 1          |             | SIDE SKIN – STEP TO BOW R. OUTBR'D                  | 21A01004-094    |
|                | 1          |             | SIDE SKIN – STEP TO BOW L. INBR'D                   | 21A01004-095    |
|                | 1          |             | SIDE SKIN – STEP TO BOW R. INBR'D                   | 21A01004-096    |
|                | 1          |             | BRACKET   | 1002114         |
|                | 1          |             | STOP (RIGHT) (FOR LEFT SIDE )                       | 1002113         |
|                | 1          |             | CLIP  | 3A01503-001     |
|                | 1          |             | PADDLE 4 FOOT                                       | 0238-0035       |
| 20             | 1          |             | SIDE SKIN – STEP TO STERN L. OUTBR'D                | 21A01004-097    |
|                | 1          |             | SIDE SKIN – STEP TO STERN R. OUTBR'D                | 21A01004-098    |
|                | 1          |             | SIDE SKIN – STEP TO STERN L. INBR'D                 | 21A01004-099    |
|                | 1          |             | SIDE SKIN – STEP TO STERN R. INBR'D                 | 21A01004-100    |
|                |            |             | <u>NOTE:</u> DIFFERENCE BETWEEN R. AND L. IS FINISH |                 |
| 21             | 2          |             | STIFFENER – SIDE SKIN                               | 21A01340-105    |
| 22             | 2          |             | STIFFENER – SIDE SKIN                               | 21A01340-104    |
| 23             | 1          |             | ASS'Y BOTTOM SKIN FWD L.                            | 21A01000-307    |
|                | 1          |             | SKIN ONLY   | 21A01005-265    |
|                | 1          |             | ASS'Y BOTTOM SKIN FWD R.                            | 21A01000-306    |
|                | 1          |             | SKIN ONLY   | 21A01005-265    |
|                |            |             | (ASSY. INCLUDES BONDED STIFFENERS)                  |                 |

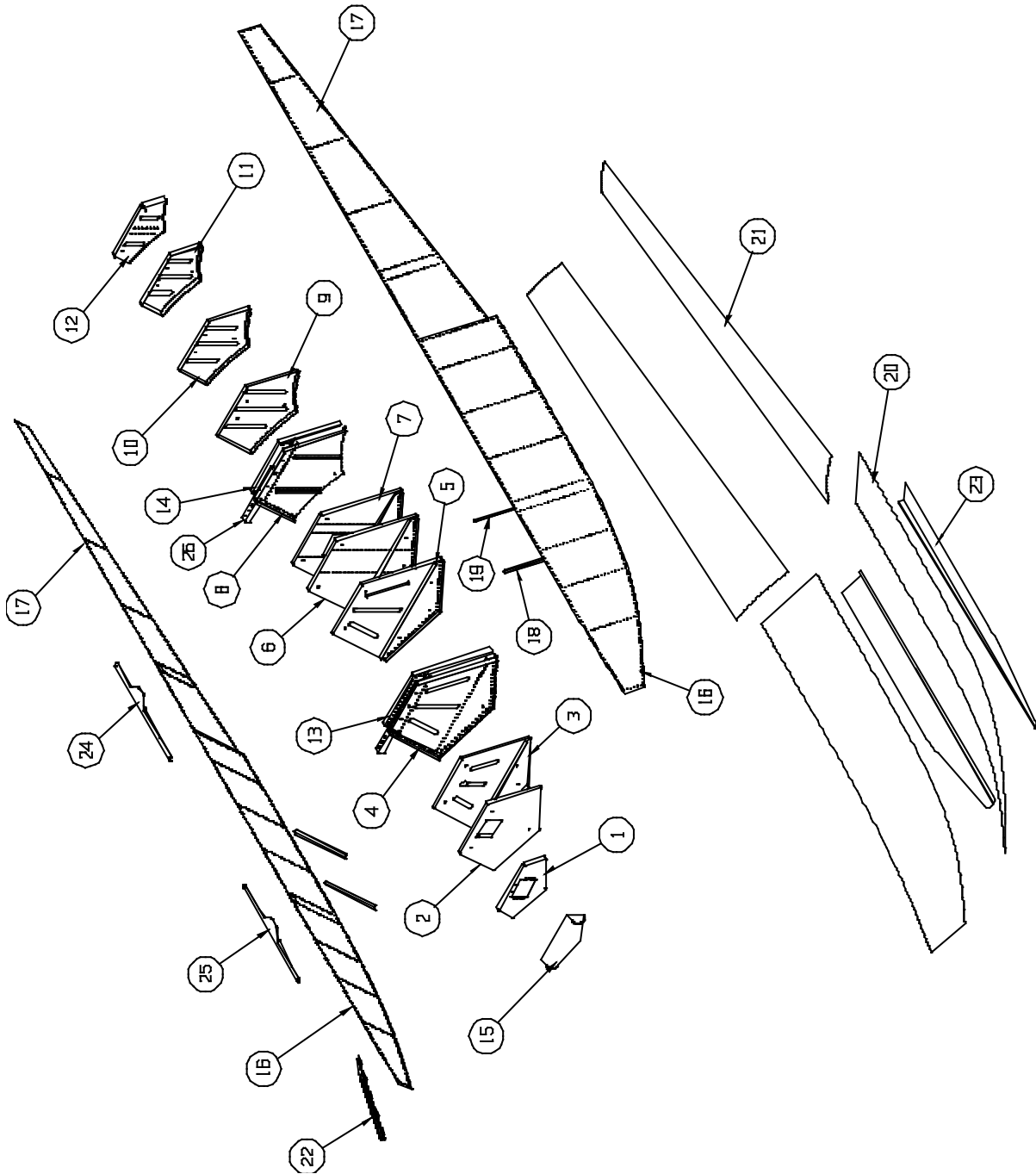
WIPLINE MODEL 2100 FLOAT PARTS MANUAL

HULL ASSEMBLY - AMPHIBIAN, FIGURE 1

| <u>REF NO.</u> | <u>NO.</u> | <u>REQ.</u> | <u>PART DESCRIPTION</u>  | <u>PART NO.</u> |
|----------------|------------|-------------|--------------------------|-----------------|
|                | 2          |             | STIFFENER                | 21A01322-001    |
|                | 2          |             | STIFFENER                | 21A01322-002    |
|                | 2          |             | STIFFENER                | 21A01322-003    |
|                | 2          |             | STIFFENER                | 21A01322-004    |
|                | 2          |             | STIFFENER                | 21A01322-005    |
|                | 6          |             | STIFFENER                | 21A01322-006    |
| 24             | 1          |             | BOTTOM SKIN AFTERBODY L. | 21A01004-103    |
|                | 1          |             | BOTTOM SKIN AFTERBODY R. | 21A01004-104    |
| 25             | 1          |             | ASS'Y SPRAY RAIL L.      | 21A01000-275    |
|                | 1          |             | ASS'Y SPRAY RAIL R.      | 21A01000-274    |
| 26             | 1          |             | BOOSTER – SISTER KEEL L. | 21A01000-429    |
|                | 1          |             | BOOSTER – SISTER KEEL R. | 21A01000-428    |
| 27             | 1          |             | DOUBLER – GUNWALL AFT L. | 21A01162-033    |
|                | 1          |             | DOUBLER – GUNWALL AFT R. | 21A01162-034    |
| 28             | 1          |             | DOUBLER – GUNWALL FWD L. | 21A01162-031    |
|                | 1          |             | DOUBLER – GUNWALL FWD R. | 21A01162-032    |
| 29             | 2          |             | TUBE – SPR. BAR MOUNTING | 21A03115-001    |
|                | 6          |             | BOLT                     | AN4-22A         |
|                | 12         |             | WASHER                   | NAS1149D0416J   |
|                | 12         |             | WASHER                   | NAS1149D0463J   |
|                | 6          |             | NUT                      | MS21044N4       |

THIS PAGE INTENTIONALLY LEFT BLANK

WIPLINE MODEL 2100 FLOAT PARTS MANUAL



HULL ASSEMBLY – SEAPLANE  
FIGURE 2

WIPLINE MODEL 2100 FLOAT PARTS MANUAL

HULL ASSEMBLY - SEAPLANE, FIGURE 2

| <u>REF NO.</u> | <u>NO.</u> | <u>REQ.</u> | <u>PART DESCRIPTION</u>   | <u>PART NO.</u> |
|----------------|------------|-------------|---------------------------|-----------------|
| 1              | 1          |             | BULKHEAD #1               | 21A01163-067    |
|                | 1          |             | COVER – NOSE GEAR OPENING | 21S01150-134    |
|                | 1          |             | NOSE COVER                | 21S01000-366    |
|                |            |             | A/R PLATE NUT             | MS21059L3       |
| 2              | 1          |             | ASSY BULKHEAD #3          | 21A01000-265    |
|                | 1          |             | BULKHEAD                  | 21A01158-184    |
|                | 1          |             | ANGLE – NOSE BOX ATTACH   | 21A01326-006    |
|                | 1          |             | ANGLE – NOSE BOX ATTACH   | 21A01326-005    |
| 3              | 1          |             | ASSY BULKHEAD #4          | 21A01000-261    |
|                | 1          |             | BULKHEAD – MAIN           | 21A01158-174    |
|                | 1          |             | SUPPORT – BULKHEAD LOWER  | 21A01158-175    |
|                | 1          |             | CLAMP, PUMP OUT TUBE      | 3A01158-003     |
| 4              | 1          |             | ASSY BULKHEAD #5          | 21A01000-253    |
|                | 1          |             | BULKHEAD - MAIN           | 21A01158-178    |
|                | 1          |             | ANGLE – SIDE L.           | 21A01326-007    |
|                | 1          |             | ANGLE – SIDE R.           | 21A01326-008    |
|                | 1          |             | PANEL – SPR. BAR          | 21A01163-066    |
|                | 1          |             | SUPPORT – BULKHEAD LOWER  | 21A01158-177    |
|                | 1          |             | CLAMP, PUMP OUT TUBE      | 3A01158-003     |
| 5              | 1          |             | ASSY BULKHEAD #6          | 21A01000-252    |
|                | 1          |             | BULKHEAD – MAIN           | 21A01158-189    |
|                | 1          |             | SUPPORT – BULKHEAD LOWER  | 21A01158-177    |
|                | 1          |             | GROMMET                   | MS35489-19      |
| 6              | 1          |             | ASSY BULKHEAD #7          | 21S01000-308    |
|                | 1          |             | BULKHEAD - MAIN           | 21A01158-189    |
|                | 1          |             | SUPPORT – BULKHEAD LOWER  | 21A01158-177    |
|                | 1          |             | CLAMP, PUMP OUT TUBE      | 3A01158-003     |
| 7              | 1          |             | ASSY BULKHEAD #8          | 21S01000-309    |
|                | 1          |             | BULKHEAD – MAIN           | 21A01158-189    |



WIPLINE MODEL 2100 FLOAT PARTS MANUAL

HULL ASSEMBLY - SEAPLANE, FIGURE 2

| <u>REF NO.</u> | <u>NO.</u> | <u>REQ.</u> | <u>PART DESCRIPTION</u>   | <u>PART NO.</u> |
|----------------|------------|-------------|---------------------------|-----------------|
|                | 1          |             | SUPPORT – BULKHEAD LOWER  | 21A01158-177    |
|                | 2          |             | ANGLE – A.B. SKIN ATTACH  | 21A01158-203    |
|                | 1          |             | CLAMP, PUMP OUT TUBE      | 3A01158-003     |
| 8              | 1          |             | ASS'Y – BULKHEAD #10      | 21S01000-322    |
|                | 1          |             | BULKHEAD - MAIN           | 21A01158-169    |
|                | 1          |             | ANGLE SIDE L.             | 21A01326-011    |
|                | 1          |             | ANGLE SIDE R.             | 21A01326-012    |
|                | 1          |             | PANEL – SPR. BAR          | 21A01163-066    |
|                | 2          |             | ANGLE – VERTICAL          | 21S01340-129    |
|                | 1          |             | CLAMP, PUMP OUT TUBE      | 3A01158-003     |
| 9              | 1          |             | BULKHEAD #11              | 21A01000-395    |
| 10             | 1          |             | BULKHEAD #12              | 21A01000-396    |
| 11             | 1          |             | BULKHEAD #13              | 21A01000-397    |
| 12             | 1          |             | ASS'Y BULKHEAD #14        | 21A01000-250    |
|                | 1          |             | BULKHEAD - MAIN           | 21A01158-164    |
|                | 1          |             | CHANNEL – REIN.           | 21A01158-165    |
|                | 1          |             | PLATE – WATER RUDDER STOP | 21A08156-130    |
| 13             | 1          |             | ASS'Y SPR. BAR PANEL FWD  | 21A01000-260    |
|                | 1          |             | PANEL – SPR. BAR          | 21A01163-065    |
|                | 1          |             | ANGLE – SIDE L.           | 21A01326-013    |
|                | 1          |             | ANGLE – SIDE R.           | 21A01326-014    |
|                | 1          |             | BOLT                      | AN4-5A          |
|                | 1          |             | WASHER                    | NAS1149F0463P   |
|                | 1          |             | NUT                       | MS21044N4       |
| 14             | 1          |             | ASS'Y SPR. BAR PANEL AFT  | 21A01000-259    |
|                | 1          |             | PANEL – SPR. BAR          | 21A01163-065    |
|                | 1          |             | ANGLE – SIDE L.           | 21A01326-009    |
|                | 1          |             | ANGLE – SIDE R.           | 21A01326-010    |

WIPLINE MODEL 2100 FLOAT PARTS MANUAL

HULL ASSEMBLY - SEAPLANE, FIGURE 2

| <u>REF NO.</u> | <u>NO.</u> | <u>REQ.</u> | <u>PART DESCRIPTION</u>                             | <u>PART NO.</u> |
|----------------|------------|-------------|---|-----------------|
|                | 1          |             | BOLT  | AN4-5A          |
|                | 1          |             | WASHER  | NAS1149F0463P   |
|                | 1          |             | NUT   | MS21044N4       |
| 15             | 1          |             | NOSE BUMPER   | 21S01738-001    |
| 16             | 1          |             | SIDE SKIN – STEP TO BOW L. OUTBR'D                  | 21S01004-123    |
|                | 1          |             | SIDE SKIN – STEP TO BOW R. OUTBR'D                  | 21S01004-122    |
|                | 1          |             | SIDE SKIN – STEP TO BOW L. INBR'D                   | 21S01004-125    |
|                | 1          |             | SIDE SKIN – STEP TO BOW R. INBR'D                   | 21S01004-124    |
| 17             | 1          |             | SIDE SKIN – STEP TO STERN L. OUTBR'D                | 21A01004-097    |
|                | 1          |             | SIDE SKIN – STEP TO STERN R. OUTBR'D                | 21A01004-098    |
|                | 1          |             | SIDE SKIN – STEP TO STERN L. INBR'D                 | 21A01004-099    |
|                | 1          |             | SIDE SKIN – STEP TO STERN R. INBR'D                 | 21A01004-100    |
|                |            |             | <u>NOTE:</u> DIFFERENCE BETWEEN R. AND L. IS FINISH |                 |
| 18             | 2          |             | STIFFENER – SIDE SKIN                               | 21A01340-105    |
| 19             | 2          |             | STIFFENER – SIDE SKIN                               | 21A01340-104    |
| 20             | 1          |             | ASS'Y BOTTOM SKIN FWD L.                            | 21A01000-307    |
|                | 1          |             | SKIN ONLY   | 21A01005-265    |
|                | 1          |             | ASS'Y BOTTOM SKIN FWD R.                            | 21A01000-306    |
|                | 1          |             | SKIN ONLY   | 21A01005-265    |
|                |            |             | (ASSY. INCLUDES BONDED STIFFENERS)                  |                 |
|                | 2          |             | STIFFENER   | 21A01322-001    |
|                | 2          |             | STIFFENER   | 21A01322-002    |
|                | 2          |             | STIFFENER   | 21A01322-003    |
|                | 2          |             | STIFFENER   | 21A01322-004    |
|                | 2          |             | STIFFENER   | 21A01322-005    |
|                | 6          |             | STIFFENER   | 21A01322-006    |
| 21             | 1          |             | BOTTOM SKIN AFTERBODY L.                            | 21S01004-131    |
|                | 1          |             | BOTTOM SKIN AFTERBODY R.                            | 21S01004-130    |

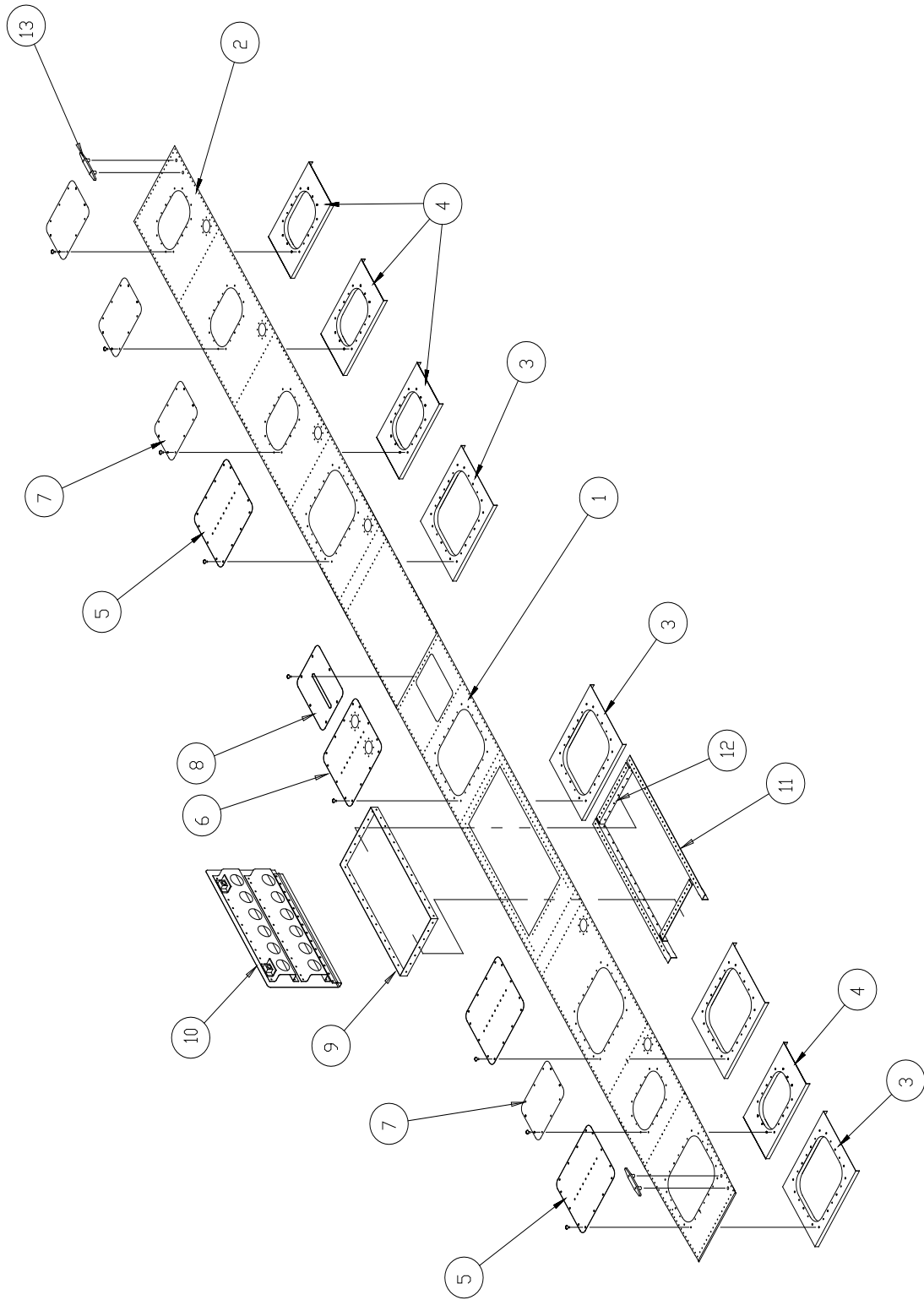
WIPLINE MODEL 2100 FLOAT PARTS MANUAL

HULL ASSEMBLY - SEAPLANE, FIGURE 2

| <u>REF NO.</u> | <u>NO.</u> | <u>REQ.</u> | <u>PART DESCRIPTION</u>  | <u>PART NO.</u> |
|----------------|------------|-------------|--------------------------|-----------------|
| 22             | 1          |             | ASS'Y SPRAY RAIL L.      | 21A01000-275    |
|                | 1          |             | ASS'Y SPRAY RAIL R.      | 21A01000-274    |
| 23             | 1          |             | BOOSTER – SISTER KEEL L. | 21A01000-429    |
|                | 1          |             | BOOSTER – SISTER KEEL R. | 21A01000-428    |
| 24             | 1          |             | DOUBLER – GUNWALL AFT L. | 21A01162-033    |
|                | 1          |             | DOUBLER – GUNWALL AFT R. | 21A01162-034    |
| 25             | 1          |             | DOUBLER – GUNWALL FWD L. | 21A01162-031    |
|                | 1          |             | DOUBLER – GUNWALL FWD R. | 21A01162-032    |
| 26             | 2          |             | TUBE – SPR. BAR MOUNTING | 21A03115-001    |
|                | 6          |             | BOLT                     | AN4-22A         |
|                | 12         |             | WASHER                   | NAS1149D0416J   |
|                | 12         |             | WASHER                   | NAS1149D0463J   |
|                | 6          |             | NUT                      | MS21044N4       |

THIS PAGE INTENTIONALLY LEFT BLANK

WIPLINE MODEL 2100 FLOAT PARTS MANUAL



TOP SKIN – HULL – AMPHIBIAN  
FIGURE 3

## WIPLINE MODEL 2100 FLOAT PARTS MANUAL

## TOP SKIN - HULL – AMPHIBIAN, FIGURE 3

| <u>REF NO.</u> | <u>NO.</u> | <u>REQ.</u> | <u>PART DESCRIPTION</u>                           | <u>PART NO.</u> |
|----------------|------------|-------------|---|-----------------|
| 1              | 1          |             | SKIN – FWD SECTION L.                             | 21A01004-089    |
|                | 1          |             | SKIN – FWD SECTION R.                             | 21A01004-090    |
| 2              | 1          |             | SKIN – AFT SECTION L.                             | 21A01004-091    |
|                | 1          |             | SKIN – AFT SECTION R.                             | 21A01004-092    |
| 3              | 4          |             | SUPPORT – INSP. COVER - LARGE                     | 21A01002-130    |
|                |            |             | A/R NUT – TINNERMAN WITH TAPE                     | 9A3-671         |
|                |            |             | A/R TAPE – INSULATOR                              | 1002481         |
| 4              | 4          |             | SUPPORT – INSP. COVER – SMALL                     | 21A01002-131    |
|                |            |             | A/R NUT – TINNERMAN WITH TAPE                     | 9A3-671         |
|                |            |             | A/R TAPE – INSULATOR                              | 1002481         |
| 5              | 3          |             | INSP. COVER – LARGE – W/ ANGLE & GASKETS          | 21A01000-258    |
|                |            |             | A/R SCREW – ATTACH                                | #8 X 5/8        |
|                | 3          |             | SEAL – GASKET ONLY                                | 1001437         |
| 6              | 1          |             | INSP. COVER – LARGE – W/ ANGLE (2 CUPS) & GASKETS | 21A01000-273    |
|                |            |             | A/R SCREW – ATTACH                                | #8 X 5/8        |
|                | 1          |             | SEAL – GASKET ONLY                                | 1001437         |
| 7              | 4          |             | INSP. COVER – SMALL & GASKETS                     | 21A01000-284    |
|                |            |             | A/R SCREW – ATTACH                                | #8 X 5/8        |
|                | 4          |             | SEAL – GASKET ONLY                                | 1001728         |
| 8              | 1          |             | COVER – GEAR INDICATOR L.                         | 21A01002-137    |
|                | 1          |             | COVER – GEAR INDICATOR R.                         | 21A01002-138    |
|                | 1          |             | PLACARD – DOWN - LAND                             | 10A3-6338-1     |
|                | 1          |             | PLACARD – UP – WATER                              | 10A3-6338-2     |
|                | 4          |             | SCREW – CAM – LOK                                 | 2600-3          |
|                | 2          |             | SCREW – CAM – LOK                                 | 112600-5        |
| 6              |            |             | RECEPTACLE – CAM – LOK                            | 212-12          |
|                |            |             |   |                 |
| 9              | 1          |             | JAMB – BAGGAGE DOOR                               | 21A01150-131    |

WIPLINE MODEL 2100 FLOAT PARTS MANUAL

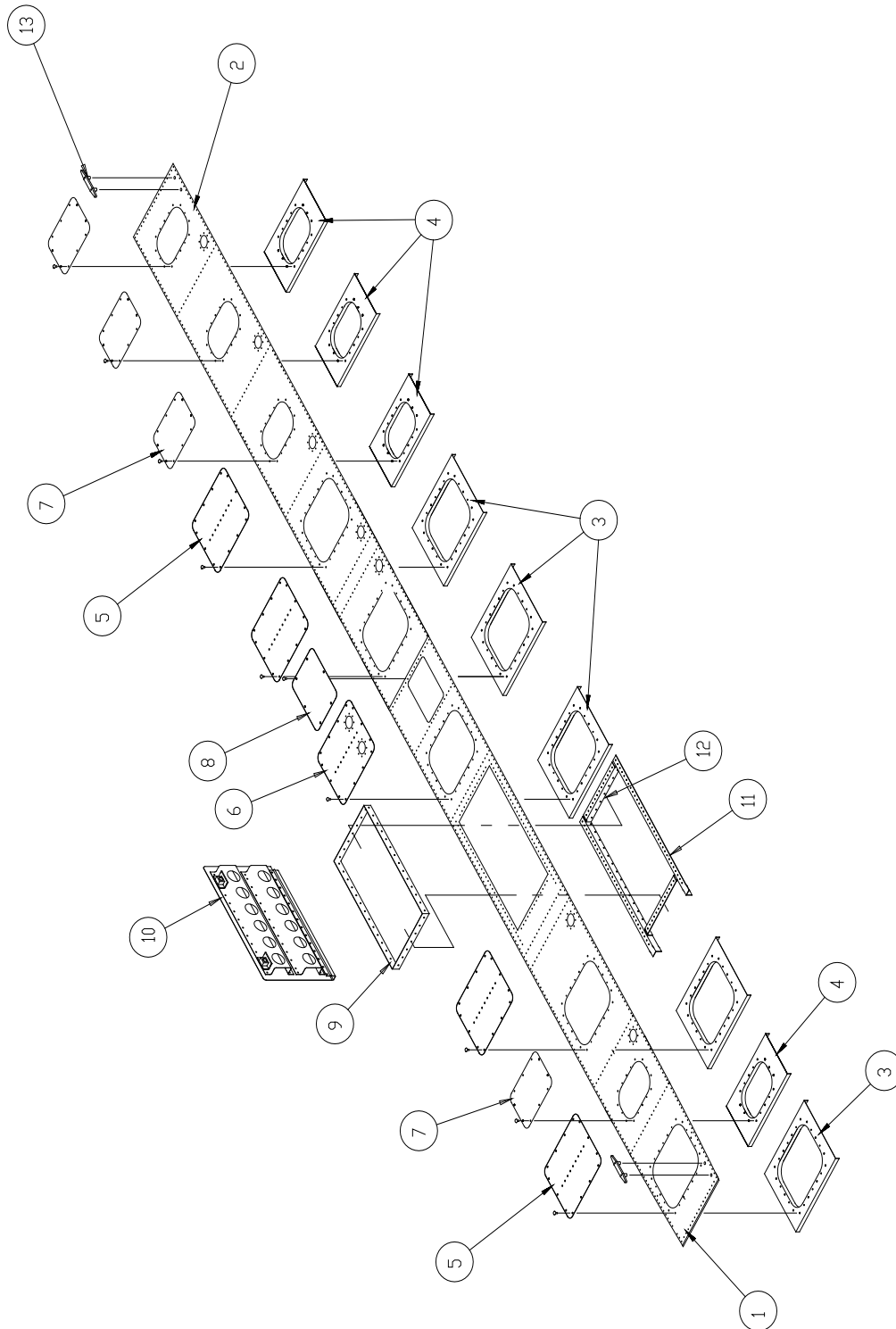
TOP SKIN - HULL – AMPHIBIAN, FIGURE 3

| <u>REF NO.</u> | <u>NO.</u> | <u>REQ.</u> | <u>PART DESCRIPTION</u>       | <u>PART NO.</u> |
|----------------|------------|-------------|-------------------------------|-----------------|
|                | 1          |             | JAMB, HINGE SIDE              | 1002067         |
| 10             | 1          |             | ASSY – BAGGAGE DOOR           | 21A01000-268    |
|                | 1          |             | COVER – SKIN                  | 21A01162-035    |
|                | 1          |             | HINGE                         | 21A01741-004    |
|                | 1          |             | HINGE                         | 21A01740-008    |
|                | 2          |             | STIFFENER – DOOR              | 21A01010-012    |
|                | 2          |             | STIFFENER ENDS                | 21A01004-106    |
|                | 2          |             | RETAINER – LOCK               | 3A01206-001     |
|                | 2          |             | LOCK PIN                      | 3A01273-004     |
|                | 2          |             | CATCH – LATCH                 | 3A01702-004     |
|                | 2          |             | LOCK SPRING                   | 3A01525-003     |
|                | 2          |             | RING – OPENING                | 1002663         |
|                | 1          |             | SEAL – GASKET (NOT SHOWN)     | 1001438         |
|                | 1          |             | HINGE PIN                     | 1002186         |
| 12             |            |             | RIVET POP                     | 01692-0410      |
|                | 2          |             | BOLT                          | 10/32 x ½ SS    |
| 11             | 1          |             | TOP RAIL – BAGGAGE OPENING L. | 21A01326-003    |
|                | 1          |             | TOP RAIL – BAGGAGE OPENING R. | 21A01326-002    |
| 12             | 2          |             | JAMB – BAGGAGE DOOR           | 21A01326-004    |
| 13             | 2          |             | CLEAT – TIE DOWN              | 21A01203-001    |
|                | 4          |             | BUSHING                       | 21A01280-004    |
|                | 4          |             | SCREW – ATTACH                | AN525-10R24     |
|                | 4          |             | NUT                           | MS21044N3       |
|                | 4          |             | WASHER                        | NAS1149D03636J  |

THIS PAGE INTENTIONALLY LEFT BLANK



WIPLINE MODEL 2100 FLOAT PARTS MANUAL



TOP SKIN – HULL – SEAPLANE  
FIGURE 4

WIPLINE MODEL 2100 FLOAT PARTS MANUAL

TOP SKIN - HULL – SEAPLANE, FIGURE 4

| <u>REF NO.</u> | <u>NO.</u> | <u>REQ.</u> | <u>PART DESCRIPTION</u>                          | <u>PART NO.</u> |
|----------------|------------|-------------|--|-----------------|
| 1              | 1          |             | SKIN – FWD SECTION L.                            | 21S01004-135    |
|                | 1          |             | SKIN – FWD SECTION R.                            | 21S01004-134    |
| 2              | 1          |             | SKIN – AFT SECTION L.                            | 21S01004-137    |
|                | 1          |             | SKIN – AFT SECTION R.                            | 21S01004-136    |
| 3              | 5          |             | SUPPORT – INSP. COVER - LARGE                    | 21A01002-130    |
|                |            |             | A/R NUT – TINNERMAN WITH TAPE                    | 1002481         |
|                |            |             | A/R NUT – TINNERMAN                              | 9A3-671         |
|                |            |             | A/R TAPE – INSULATOR                             | 9903-10-36      |
| 4              | 4          |             | SUPPORT – INSP. COVER – SMALL                    | 21A01002-131    |
|                |            |             | A/R NUT – TINNERMAN WITH TAPE                    | 1002481         |
|                |            |             | A/R NUT – TINNERMAN                              | 9A3-671         |
|                |            |             | A/R TAPE – INSULATOR                             | 9903-10-36      |
| 5              | 4          |             | INSP. COVER – LARGE – W/ ANGLE & GASKETS         | 21A01000-258    |
|                |            |             | A/R SCREW – ATTACH                               | #8 X 5/8        |
|                | 4          |             | SEAL – GASKET ONLY                               | 1001437         |
| 6              | 1          |             | INSP. COVER – LARGE – W/ ANGLE (2 CUPS)& GASKETS | 21A01000-273    |
|                |            |             | A/R SCREW – ATTACH                               | #8 X 5/8        |
|                | 1          |             | SEAL – GASKET ONLY                               | 1001437         |
| 7              | 4          |             | INSP. COVER – SMALL & GASKETS                    | 21A01000-284    |
|                |            |             | A/R SCREW – ATTACH                               | #8 X 5/8        |
|                | 4          |             | SEAL – GASKET                                    | 1001728         |
| 8              | 1          |             | COVER  | 21S01000-399    |
|                | 1          |             | SEAL – GASKET                                    | 21S01567-013    |
|                |            |             | A/R SCREW – ATTACH                               | #8 X 5/8        |
|                |            |             | A/R NUT – TINNERMAN                              | 1002481         |
|                | 2          |             | STIFFENER – ANGLE                                | 30S01326-035    |
| 9              | 1          |             | JAMB – BAGGAGE DOOR                              | 21A01150-131    |

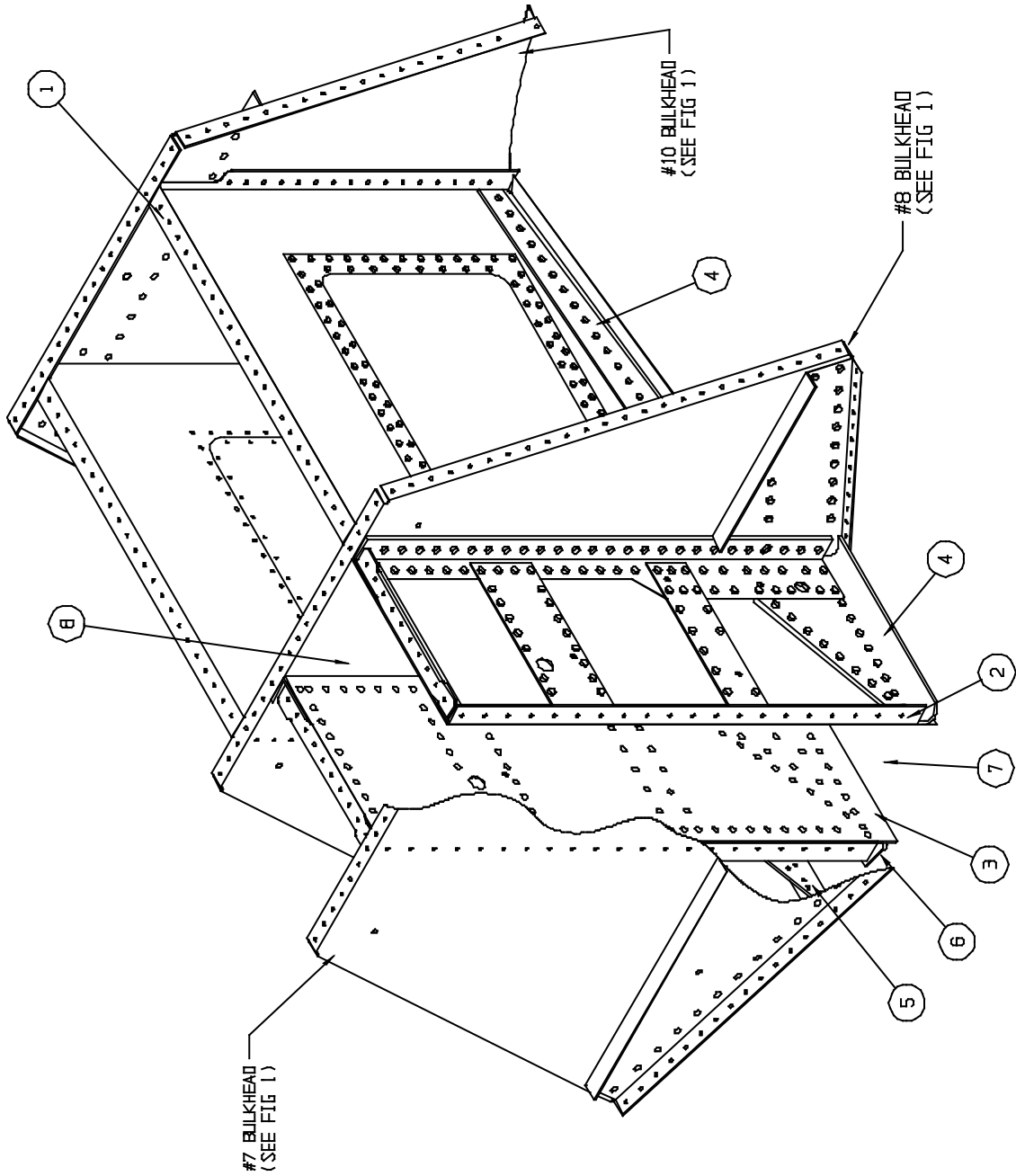
WIPLINE MODEL 2100 FLOAT PARTS MANUAL

TOP SKIN - HULL – SEAPLANE, FIGURE 4

| <u>REF NO.</u> | <u>NO.</u> | <u>REQ.</u> | <u>PART DESCRIPTION</u>       | <u>PART NO.</u> |
|----------------|------------|-------------|-------------------------------|-----------------|
|                | 1          |             | JAMB – HINGE SIDE             | 1002067         |
| 10             | 1          |             | ASSY – BAGGAGE DOOR           | 21A01000-268    |
|                | 1          |             | COVER - SKIN                  | 21A01162-035    |
|                | 1          |             | HINGE                         | 21A01741-004    |
|                | 2          |             | STIFFENER - DOOR              | 21A01010-012    |
|                | 2          |             | STIFFENER ENDS                | 21A01004-106    |
|                | 2          |             | RETAINER - LOCK               | 3A01206-001     |
|                | 2          |             | LOCK PIN                      | 3A01273-004     |
|                | 2          |             | CATCH – LATCH                 | 3A01702-001     |
|                | 2          |             | LOCK SPRING                   | 3A01525-003     |
|                | 2          |             | RING – OPENING                | 9-0177A221      |
|                | 1          |             | SEAL – GASKET (NOT SHOWN)     | 1001438         |
|                | 1          |             | HINGE PIN                     | 1002186         |
|                | 12         |             | POP RIVET                     | 01692-0410      |
|                | 2          |             | BOLT                          | 10/32 x ½ SS    |
| 11             | 1          |             | TOP RAIL – BAGGAGE OPENING L. | 21A01326-003    |
|                | 1          |             | TOP RAIL – BAGGAGE OPENING R. | 21A01326-002    |
| 12             | 2          |             | JAMB – BAGGAGE DOOR           | 21A01326-004    |
| 13             | 2          |             | CLEAT – TIE DOWN              | 21A01203-001    |
|                | 4          |             | BUSHING                       | 21A01280-004    |
|                | 4          |             | SCREW – ATTACH                | AN525-10R24     |
|                | 4          |             | NUT                           | MS21044N3       |
|                | 4          |             | WASHER                        | NAS1149D0363J   |

THIS PAGE INTENTIONALLY LEFT BLANK

WIPLINE MODEL 2100 FLOAT PARTS MANUAL



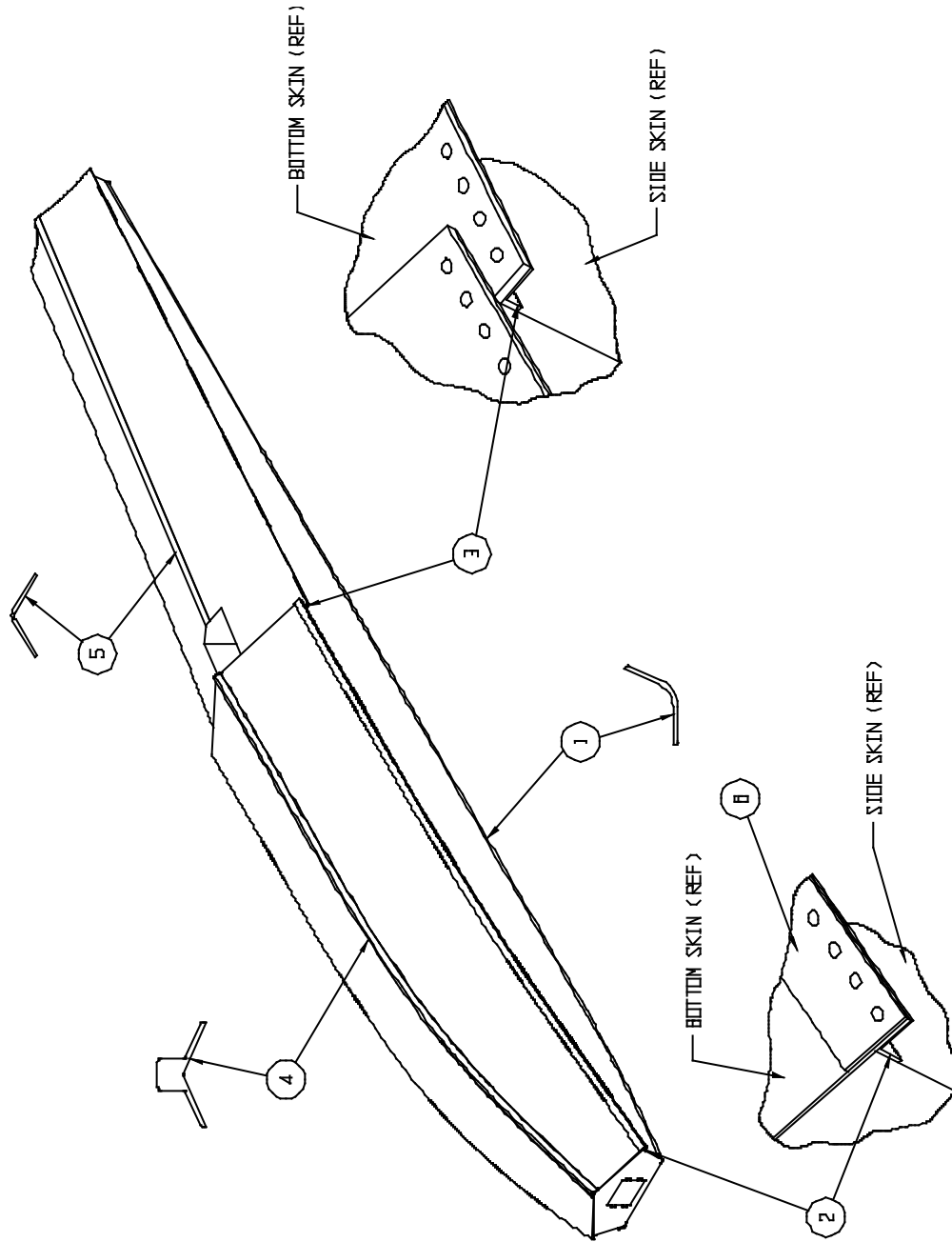
WHEELWELL ASSEMBLY – AMPHIBIAN  
FIGURE 5

WIPLINE MODEL 2100 FLOAT PARTS MANUAL

WHEEL WELL ASSEMBLY – AMPHIBIAN, FIGURE 5

| <u>REF NO.</u> | <u>NO.</u> | <u>REQ.</u> | <u>PART DESCRIPTION</u>              | <u>PART NO.</u>            |              |
|----------------|------------|-------------|--------------------------------------|----------------------------|--------------|
| 1              | 1          |             | ASS'Y – WHEELWELL HALF L.            | 21A01000-289               |              |
|                | 1          |             | PANEL – FORMED L.                    | 21A01158-185               |              |
|                | 1          |             | RING – COVER REINFORCEMENT           | 13A01156-124               |              |
|                | 1          |             | COVER                                | 21A01158-163               |              |
|                | 28         |             | SCREW                                | AN526-632R6                |              |
|                | 1          | 1           |                                      | ASS'Y – WHEELWELL HALF R.  | 21A01000-290 |
|                |            | 1           |                                      | PANEL – FORMED R.          | 21A01158-186 |
|                |            | 1           |                                      | RING – COVER REINFORCEMENT | 13A01156-124 |
|                |            | 1           |                                      | COVER                      | 21A01158-163 |
|                |            | 28          |                                      | SCREW                      | AN526-632R6  |
| 2              | 1          |             | ASS'Y – WHEELWELL PANEL – OUTBR'D L. | 21A01000-257               |              |
|                | 1          |             | ASS'Y - WHEELWELL PANEL – OUTBR'D R. | 21A01000-256               |              |
| 3              | 1          |             | ASS'Y – WHEELWELL PANEL – INBR'D L.  | 21A01000-255               |              |
|                | 1          |             | ASS'Y - WHEELWELL PANEL – INBR'D R.  | 21A01000-254               |              |
| 4              | 1          |             | CARRY-THRU STRAP OUTBR'D L.          | 21A01017-005               |              |
|                | 1          |             | CARRY-THRU STRAP OUTBR'D R.          | 21A01017-004               |              |
| 5              | 1          |             | CARRY-THRU STRAP INBR'D L.           | 21A01017-003               |              |
|                | 1          |             | CARRY-THRU STRAP INBR'D R.           | 21A01017-002               |              |
| 6              | 1          |             | CARRY-THRU STRAP INBR'D L.           | 21A01017-007               |              |
|                | 1          |             | CARRY-THRU STRAP INBR'D R.           | 21A01017-006               |              |
|                | 1          |             | ANGLE – ATTACH AFT L.                | 21A01156-131               |              |
|                | 1          |             | ANGLE – ATTACH AFT R.                | 21A01156-132               |              |
|                | 1          |             | SHIM                                 | 21A01156-125               |              |
|                | 2          |             | ANGLE – ATTACH FWD                   | 21A01326-015               |              |
| 7              | 1          |             | SAND GUARD ASS'Y (NOT SHOWN)         | 21A01000-398               |              |
|                | 1          |             | SAND GUARD (NOT SHOWN)               | 21A01150-136               |              |
|                | 4          |             | SCREW                                | AN526-1032R8               |              |
|                | 4          |             | NUT PLATE                            | MS21078-3                  |              |
| 8              | 1          |             | MUD FLAP (NOT SHOWN)                 | 21A01569-001               |              |
|                | 1          |             | REINFORCEMENT                        | 21A01150-135               |              |

WIPLINE MODEL 2100 FLOAT PARTS MANUAL



EXTRUSIONS – HULL - AMPHIBIAN  
FIGURE 6

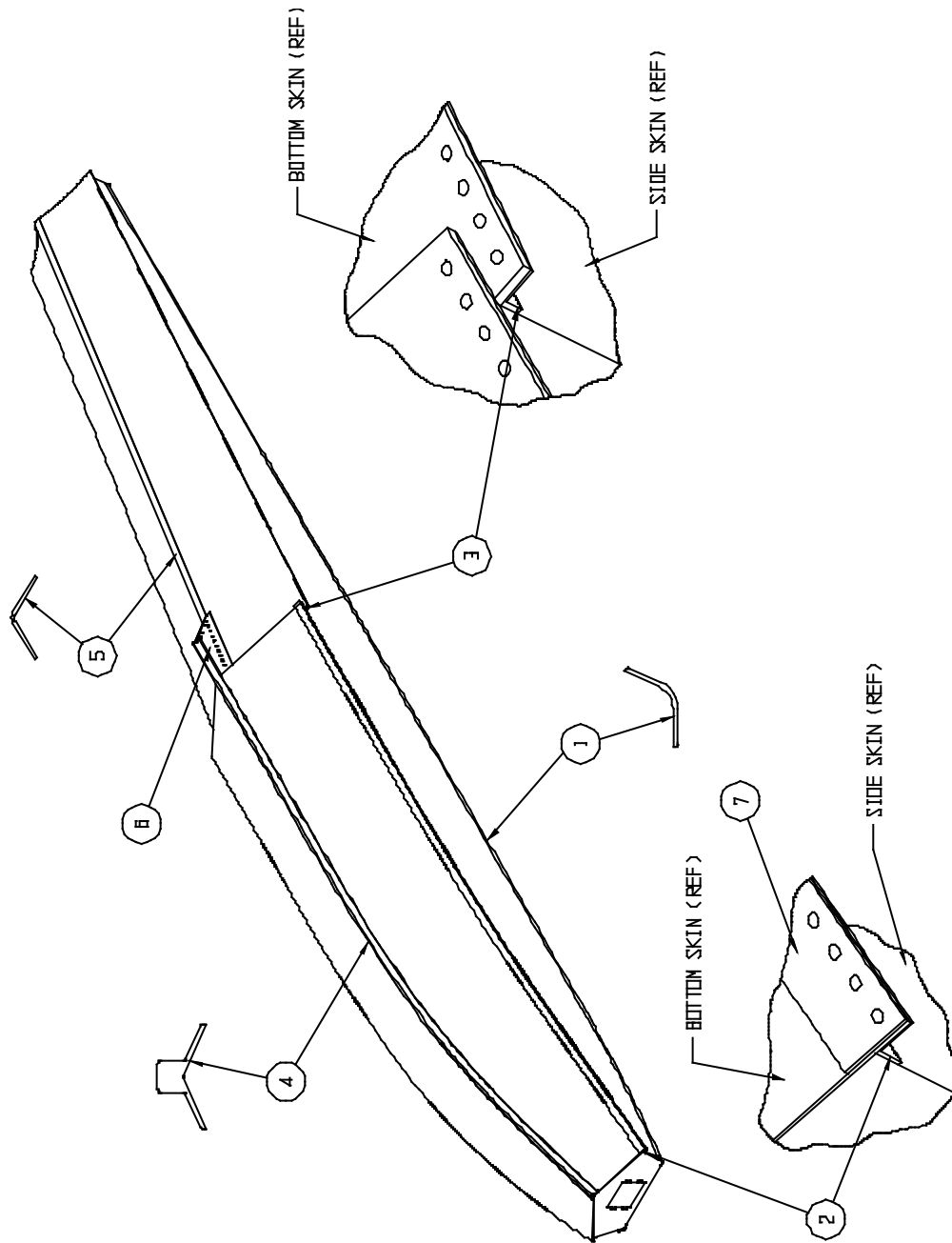
WIPLINE MODEL 2100 FLOAT PARTS MANUAL

EXTRUSION – HULL – AMPHIBIAN, FIGURE 6

| <u>REF NO.</u> | <u>NO.</u> | <u>REQ.</u> | <u>PART DESCRIPTION</u> | <u>PART NO.</u> |
|----------------|------------|-------------|-------------------------|-----------------|
| 1              | 1          |             | GUNWALL – L.            | 21A01324-001    |
|                | 1          |             | GUNWALL – R.            | 21A01324-002    |
| 2              | 1          |             | CHINE - FWD L.          | 21A01340-109    |
|                | 1          |             | CHINE – FWD R.          | 21A01340-108    |
| 3              | 1          |             | CHINE – AFTERBODY L.    | 21A01340-107    |
|                | 1          |             | CHINE – AFTERBODY R.    | 21A01340-106    |
| 4              | 1          |             | KEEL - MAIN             | 21A01321-001    |
| 5              | 1          |             | KEEL - AFTERBODY        | 21A01008-142    |



WIPLINE MODEL 2100 FLOAT PARTS MANUAL



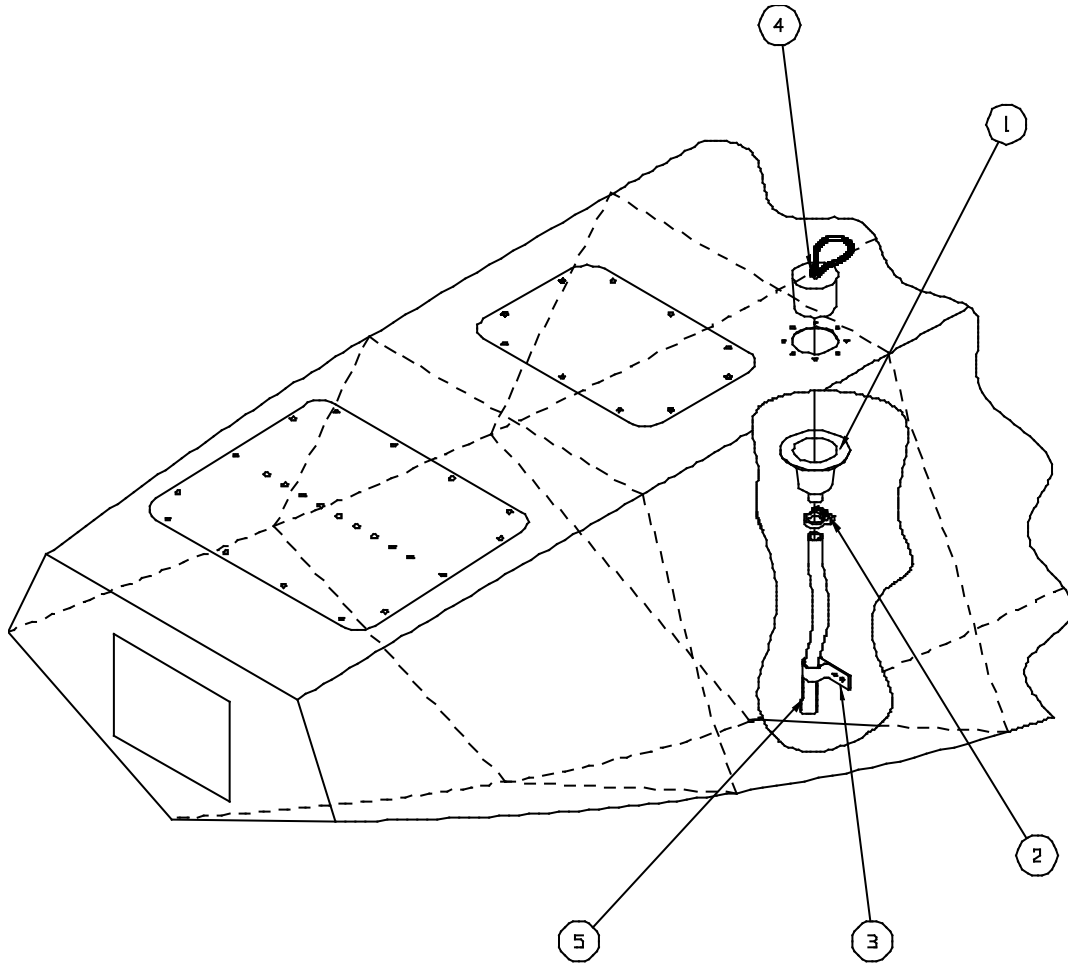
EXTRUSIONS – HULL – SEAPLANE  
FIGURE 7

WIPLINE MODEL 2100 FLOAT PARTS MANUAL

EXTRUSION – HULL – SEAPLANE, FIGURE 7

| <u>REF NO.</u> | <u>NO.</u> | <u>REQ.</u> | <u>PART DESCRIPTION</u>      | <u>PART NO.</u> |
|----------------|------------|-------------|------------------------------|-----------------|
| 1              | 1          |             | GUNWALL – L.                 | 21A01324-001    |
|                | 1          |             | GUNWALL – R.                 | 21A01324-002    |
| 2              | 1          |             | CHINE - FWD L.               | 21A01340-109    |
|                | 1          |             | CHINE – FWD R.               | 21A01340-108    |
| 3              | 1          |             | CHINE – AFTERBODY L.         | 21A01340-107    |
|                | 1          |             | CHINE – AFTERBODY R.         | 21A01340-106    |
| 4              | 1          |             | KEEL - MAIN                  | 21S01321-004    |
| 5              | 1          |             | KEEL - AFTERBODY             | 21S01008-172    |
|                | 1          |             | AFTERBODY GUSSET ASSY.       | 21S01000-400    |
|                | 1          |             | ANGLE SUPPORT – AFTERBODY L. | 21S01163-037    |
|                | 1          |             | ANGLE SUPPORT – AFTERBODY R. | 21S01163-038    |

WIPLINE MODEL 2100 FLOAT PARTS MANUAL



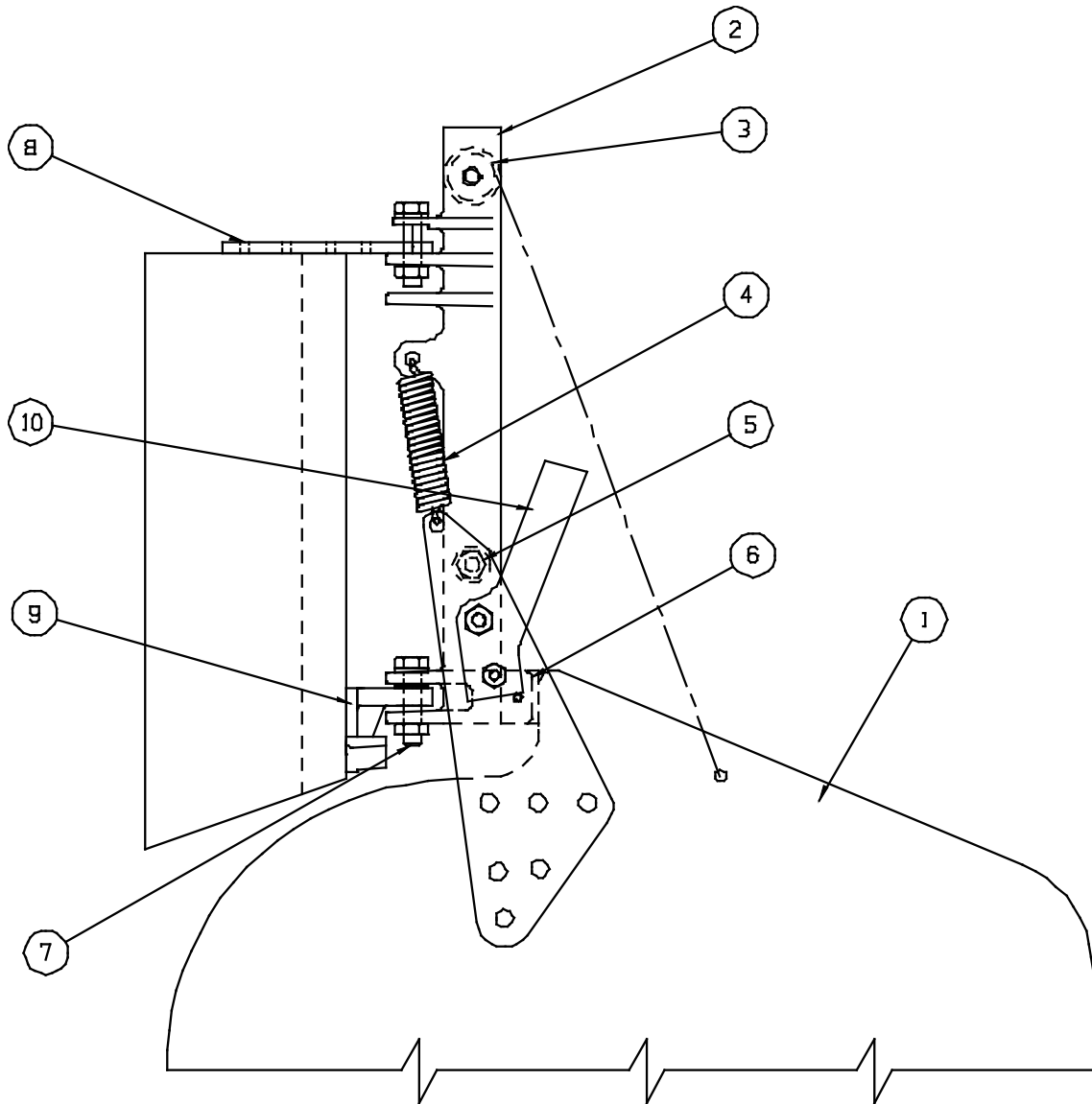
PUMPER TUBE INSTALLATION  
FIGURE 8

WIPLINE MODEL 2100 FLOAT PARTS MANUAL

PUMPOUT TUBE INSTALLATION, FIGURE 8

| <u>REF NO.</u> | <u>NO.</u> | <u>REQ.</u> | <u>PART DESCRIPTION</u>           | <u>PART NO.</u>             |
|----------------|------------|-------------|-----------------------------------|-----------------------------|
| 1              | 1          |             | CUP – PUMPOUT ALUM.<br>A/R RIVETS | 4A01749-001<br>MS20470AD4-4 |
| 2              | 1          |             | CLAMP – UPPER END                 | 57134                       |
| 3              | 1          |             | CLAMP – LOWER END                 | 3A01158-003                 |
| 4              | 1          |             | STOPPER – PUMPER TUBE             | 2111                        |
| 5              | 1          |             | PUMPOUT TUBE 10.5 IN.             | 21A01618-062                |
|                | 1          |             | PUMPOUT TUBE 12.5 IN.             | 21A01648-061                |
|                | 1          |             | PUMPOUT TUBE 15.0 IN.             | 21A01648-060                |
|                | 1          |             | PUMPOUT TUBE 17.5 IN.             | 21A01618-059                |
|                | 1          |             | PUMPOUT TUBE 23.0 IN.             | 21A01648-058                |
|                | 1          |             | PUMPOUT TUBE 21.5 IN.             | 21A01648-056                |
|                | 1          |             | PUMPOUT TUBE 18.5 IN.             | 21A01648-055                |

WIPLINE MODEL 2100 FLOAT PARTS MANUAL



INSTALLATION WATER RUDDER  
FIGURE 9

WIPLINE MODEL 2100 FLOAT PARTS MANUAL

INSTALLATION WATER RUDDER, FIGURE 9

| <u>REF NO.</u> | <u>NO.</u> | <u>REQ.</u> | <u>PART DESCRIPTION</u>     | <u>PART NO.</u> |
|----------------|------------|-------------|-----------------------------|-----------------|
| 1              | 1          |             | ASS'Y - BLADE               | 21A08000-123    |
|                | 1          |             | BLADE                       | 21A08017-006    |
|                | 1          |             | ARM L.                      | 21A08019-001    |
|                | 1          |             | ARM R.                      | 21A08019-002    |
| 2              | 1          |             | ASS'Y - POST – WATER RUDDER | 21A08000-152    |
|                | 1          |             | POST – WATER RUDDER         | 21A08442-001    |
| 3              | 1          |             | GUIDE - RETRACT             | 21A08602-009    |
|                | 1          |             | PIN – ATTACH                | 5/16 X 1-1/2    |
| 4              | 2          |             | SPRING                      | 21A08525-006    |
| 5              | 1          |             | BOLT - ATTACH               | AN5-26A         |
|                |            |             | A/R WASHER                  | NAS1149D0516J   |
|                | 1          |             | NUT                         | MS21083N5       |
| 6              | 1          |             | BUMPER – DOWN STOP          | 21A08648-002    |
|                | 1          |             | ROLL PIN                    | 1001457         |
| 7              | 2          |             | BOLT - ATTACH               | AN5-12A         |
|                |            |             | A/R WASHER                  | NAS1149D0516J   |
|                | 2          |             | NUT                         | MS21083N5       |
| 8              | 1          |             | ASS'Y – TOP BEARING         | 21A01000-299    |
|                | 1          |             | PLATE                       | 21A01019-003    |
|                | 1          |             | BEARING                     | 21A01705-003    |
| 9              | 1          |             | ASS'Y – LOWER BEARING       | 21A08000-157    |
|                | 1          |             | BRACKET                     | 21A08318-002    |
|                | 1          |             | BEARING                     | 05DU06          |
| 10             | 2          |             | STOP                        | 21A08154-009    |
|                | 2          |             | BOLT – ATTACH UPPER         | AN4-7A          |
|                | 2          |             | WASHER                      | NAS1149D0463J   |

WIPLINE MODEL 2100 FLOAT PARTS MANUAL

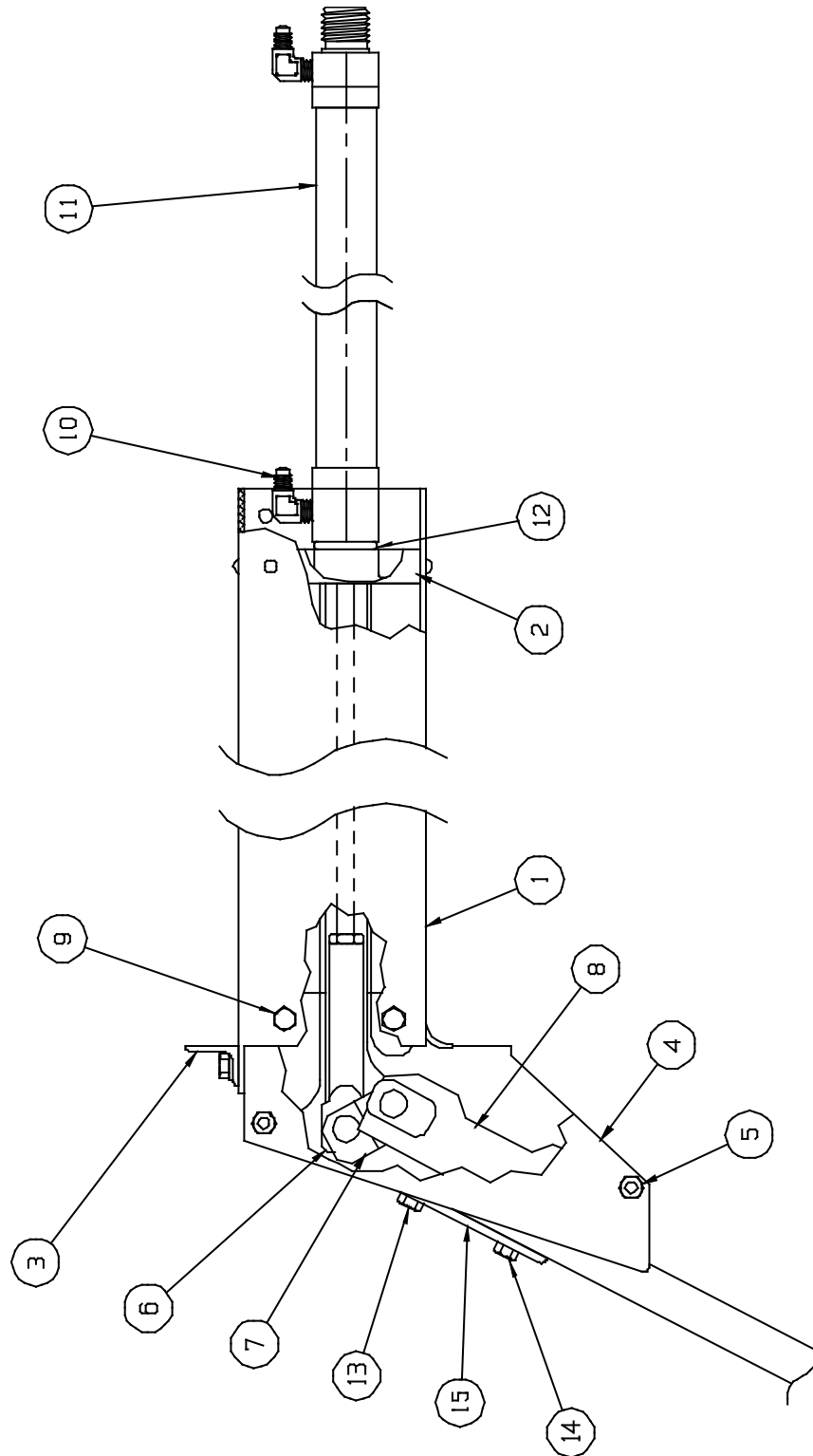
INSTALLATION WATER RUDDER, FIGURE 9

| <u>REF NO.</u> | <u>NO. REQ.</u> | <u>PART DESCRIPTION</u> | <u>PART NO.</u> |
|----------------|-----------------|-------------------------|-----------------|
|                | 2               | NUT                     | MS21044N4       |
|                | 2               | BOLT – ATTACH LOWER     | AN3-7A          |
|                | 2               | WASHER                  | NAS1149D0363J   |
|                | 2               | NUT                     | MS21044N3       |

THIS PAGE INTENTIONALLY LEFT BLANK



WIPLINE MODEL 2100 FLOAT PARTS MANUAL



ASSEMBLY – NOSE GEAR RETRACTION  
FIGURE 10

WIPLINE MODEL 2100 FLOAT PARTS MANUAL

ASSEMBLY – NOSE GEAR RETRACTION, FIGURE 10

| <u>REF NO.</u> | <u>NO.</u> | <u>REQ.</u> | <u>PART DESCRIPTION</u> | <u>PART NO.</u> |
|----------------|------------|-------------|-------------------------|-----------------|
| 1              | 1          |             | ASS'Y – NOSE BOX        | 21A07000-015    |
|                | 1          |             | NOSE – BOX              | 21A07323-001    |
|                | 1          |             | COVER – ACCESS          | 8A01008-080     |
|                | 1          |             | GASKET                  | 30A07567-011    |
|                | 4          |             | SCREW                   | AN526-1032R4    |
| 2              | 1          |             | END – CAP - AFT         | 21A07237-002    |
| 3              | 1          |             | ANGLE                   | 21A07359-194    |
|                | 2          |             | BOLT                    | AN4-6A          |
|                | 2          |             | WASHER                  | NAS1149D0463J   |
|                | 2          |             | WASHER                  | NAS1149D0416J   |
|                | 2          |             | NUT                     | MS21044N4       |
| 4              | 1          |             | TRACK – NOSE END L.     | 21A07349-003    |
|                | 1          |             | TRACK – NOSE END R.     | 21A07349-004    |
| 5              | 2          |             | BOLT                    | AN4-53A         |
|                | 4          |             | WASHER                  | NAS1149D0416J   |
|                | 2          |             | NUT                     | NAS5679-A4W     |
| 6              | 1          |             | ROD END - RAM           | 21A07094-002    |
|                | 1          |             | NUT - JAMB              | AN316-5R        |
| 7              | 1          |             | LINK – DOWN LOCK        | 21A07032-005    |
|                | 1          |             | AXLE – SHAFT            | 21A07509-007    |
|                | 2          |             | ROLLER                  | 3A07530-001     |
|                | 2          |             | SNAP RING               | 5100-46-H       |
| 8              | 1          |             | TROLLEY – SPRING ATTACH | 21A07187-009    |
|                | 2          |             | AXLES - SHAFT           | 34A07509-008    |
|                | 4          |             | BLOCK - SLIDE           | 3A07604-001     |
| 9              | 4          |             | BOLT                    | AN4-5A          |
|                | 4          |             | WASHER                  | NAS1149D0463J   |

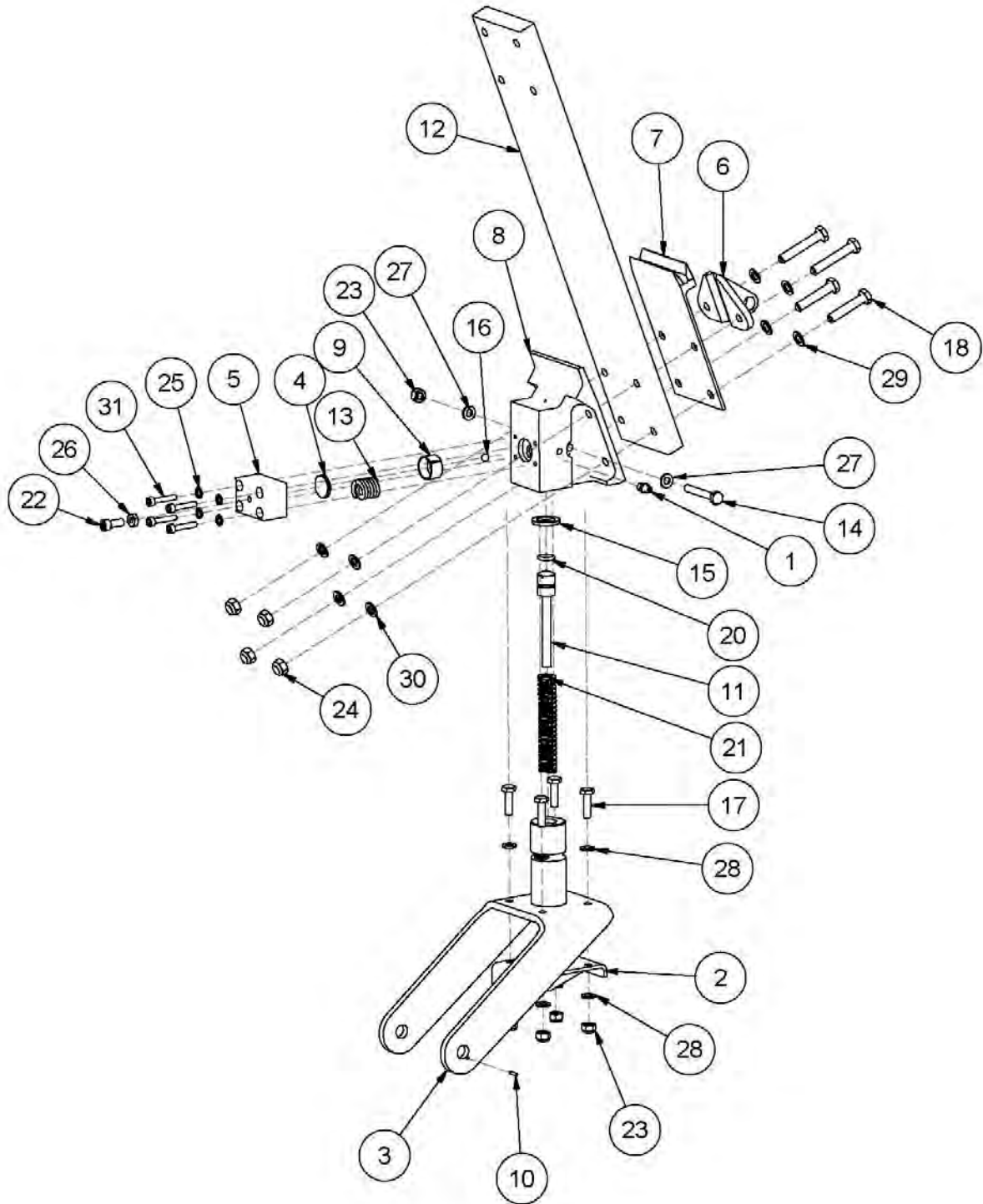
WIPLINE MODEL 2100 FLOAT PARTS MANUAL

ASSEMBLY – NOSE GEAR RETRACTION, FIGURE 10

| <u>REF NO.</u> | <u>NO. REQ.</u> | <u>PART DESCRIPTION</u> | <u>PART NO.</u> |
|----------------|-----------------|-------------------------|-----------------|
|                | 4               | WASHER                  | NAS1149D0416J   |
|                | 4               | NUT                     | NAS5679-A4W     |
| 10             | 2               | ELBOW                   | MS20822-4D      |
| 11             | 1               | HYDRAULIC CYLINDER      | 1002571         |
| 12             | A/R             | WASHER                  | NAS1149D1416J   |
| 13             | 2               | BOLT                    | AN5-20A         |
|                | A/R             | WASHER                  | NAS1149F0563P   |
|                | 2               | NUT                     | MS21044N5       |
| 14             | 2               | BOLT                    | AN5-21A         |
|                | A/R             | WASHER                  | NAS1149F0563P   |
|                | 2               | NUT                     | MS21044N5       |
| 15             | 1               | PLATE – BEARING UPPER   | 21A06166-001    |

THIS PAGE INTENTIONALLY LEFT BLANK

WIPLINE MODEL 2100 FLOAT PARTS MANUAL



ASSEMBLY – NOSE GEAR – LOWER  
FIGURE 11

WIPLINE MODEL 2100 FLOAT PARTS MANUAL

ASSEMBLY – NOSE GEAR LOWER, FIGURE 11

| <u>REF NO.</u> | <u>NO. REQ.</u> | <u>PART DESCRIPTION</u>                | <u>PART NO.</u> |
|----------------|-----------------|--|-----------------|
| 1              | 1               | COMMON GREASEZERK                      | 1095K41         |
| 2              | 1               | WELDMENT, PIVOT SHAFT, FORK, NOSE GEAR | 21A06000-020    |
| 3              | 1               | FORK, NOSE GEAR (2100)                 | 21A06020-001    |
| 4              | 1               | PRESSURE PLATE                         | 21A06160-053    |
| 5              | 1               | BLOCK - SPRING                         | 21A06194-005    |
| 6              | 1               | TOW HOOK NOSE GEAR                     | 21A06213-006    |
| 7              | 1               | BEARING PLATE, LOWER, NOSE GEAR        | 21A06237-001    |
| 8              | 1               | BLOCK - PIVOT, NOSE GEAR               | 21A06318-005    |
| 9              | 1               | FRICTION CUP                           | 21A06475-006    |
| 10             | 1               | PIN, ANTIROTATION                      | 21A06476-003    |
| 11             | 1               | PLUNGER- NOSE WHEEL, 21,23,3,34        | 21A06605-002    |
| 12             | 1               | SPRING NOSE GEAR                       | 21A06653-001    |
| 13             | 1               | PRESSURE SPRING                        | 21A06705-005    |
| 14             | 1               | BOLT - MODIFIED, PIVOT BLOCK           | 30A06702-016    |
| 15             | 1               | THRUST WASHER                          | 3A06602-001     |
| 16             | 1               | 1/4" CHROME BALL BEARING               | 9528K15         |
| 17             | 4               | BOLT                                   | AN4-7A          |
| 18             | 2               | BOLT                                   | AN5-14A         |
| 19             | 2               | BOLT                                   | AN5-16A         |
| 20             | 1               | O-RING                                 | AN6227-9        |
| 21             | 1               | SPRING                                 | M62-350         |
| 22             | 1               | SOCKET HEAD CAP SCREW                  | MS16997-60      |
| 23             | 5               | NUT                                    | MS21044N4       |

WIPLINE MODEL 2100 FLOAT PARTS MANUAL

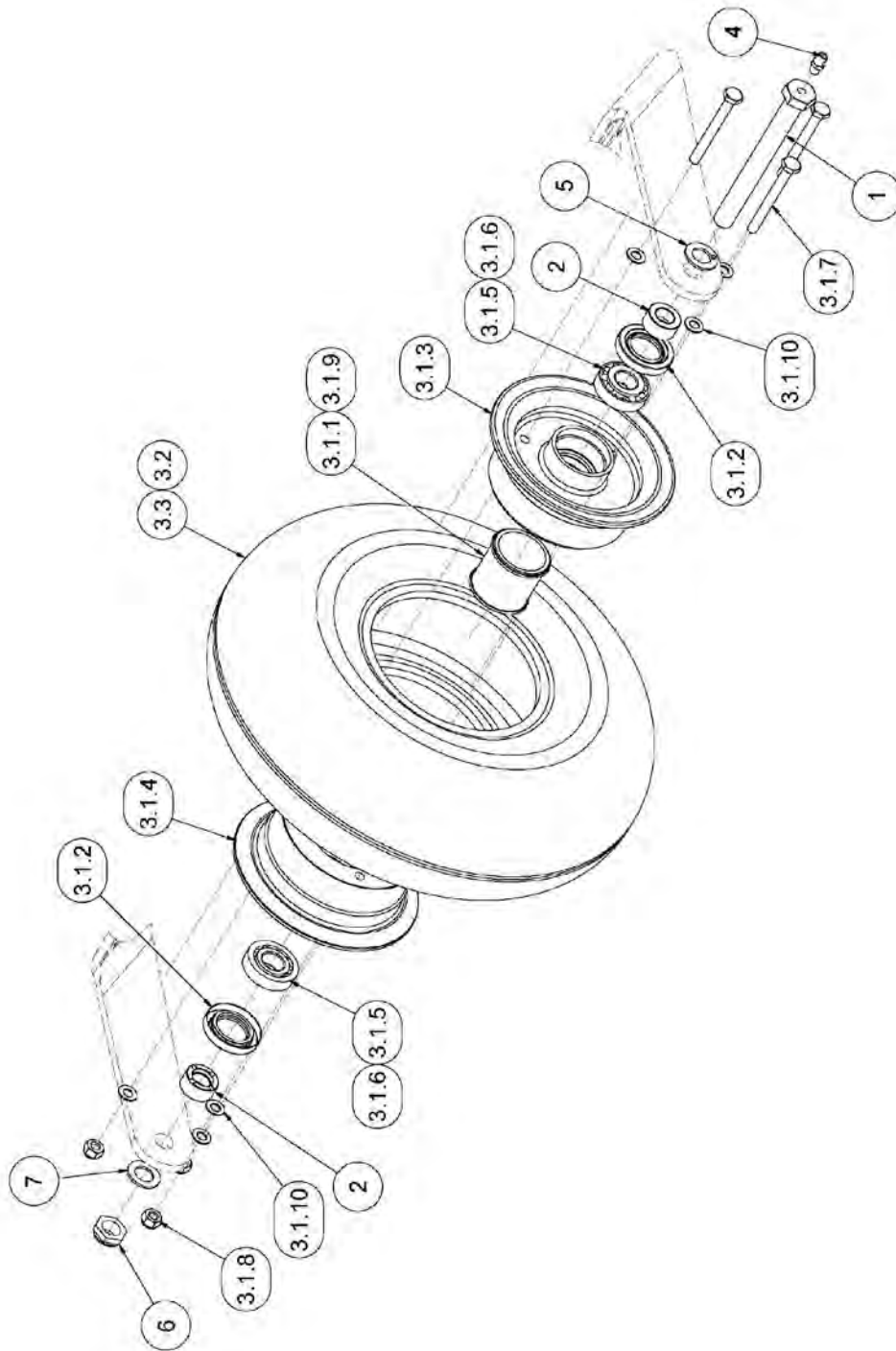
ASSEMBLY – NOSE GEAR LOWER, FIGURE 11

| <u>REF NO.</u> | <u>NO. REQ.</u> | <u>PART DESCRIPTION</u> | <u>PART NO.</u> |
|----------------|-----------------|-------------------------|-----------------|
| 24             | 4               | NUT                     | MS21044N5       |
| 25             | 4               | STAR WASHER             | MS35333-39      |
| 26             | 1               | NUT                     | MS35649-2252    |
| 27             | 2               | WASHER                  | NAS1149D0463J   |
| 28             | 8               | WASHER                  | NAS1149F0463P   |
| 29             | 4               | WASHER                  | NAS1149F0532P   |
| 30             | 4               | WASHER                  | NAS1149F0563P   |
| 31             | 4               | SOCKET HEAD CAP SCREW   | NAS1352-316P    |

THIS PAGE INTENTIONALLY LEFT BLANK



WIPLINE MODEL 2100 FLOAT PARTS MANUAL

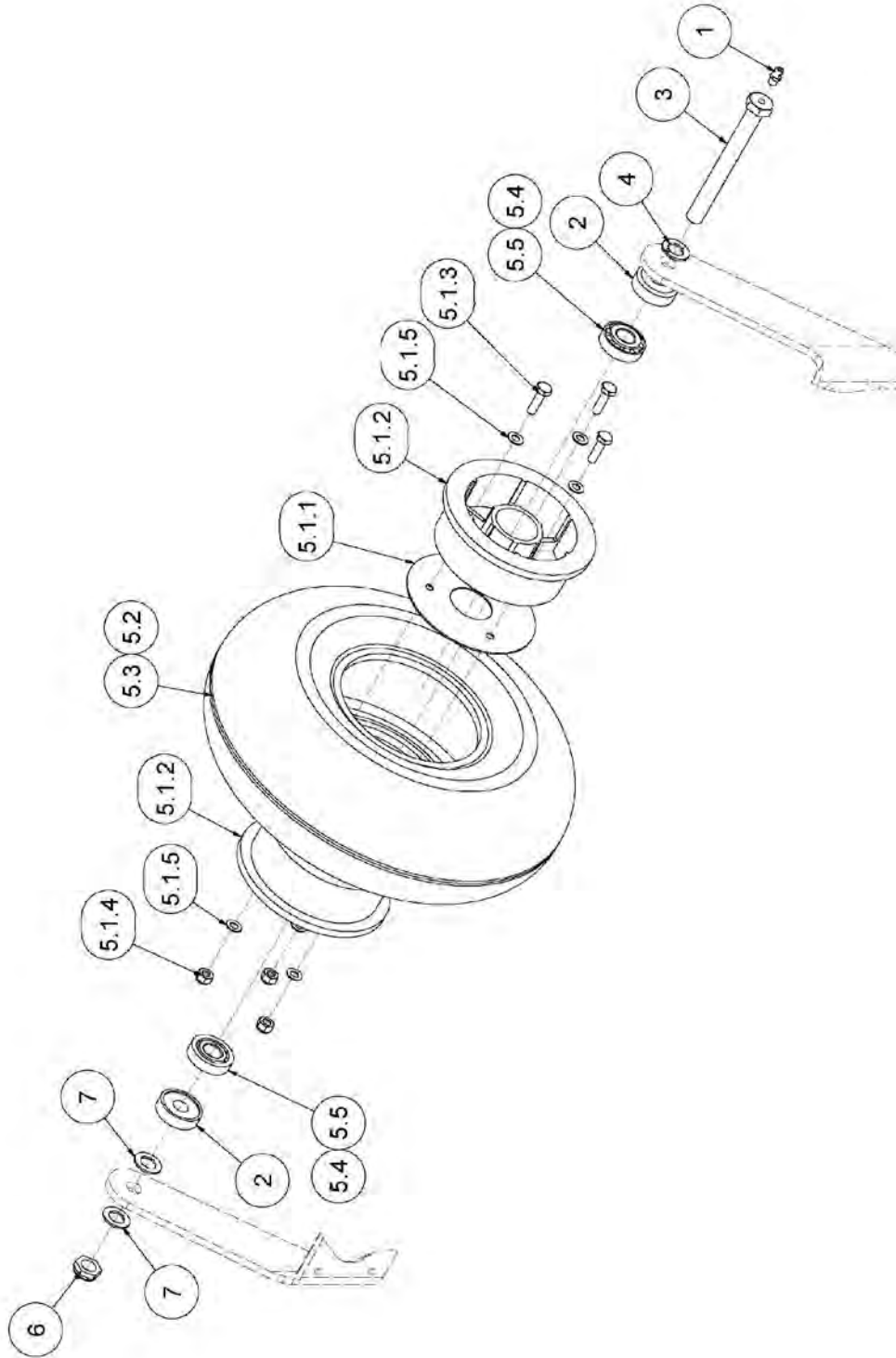


ASSEMBLY – NOSE WHEEL (GROVE)  
FIGURE 12A

WIPLINE MODEL 2100 FLOAT PARTS MANUAL  
ASSEMBLY – NOSE WHEEL (GROVE), FIGURE 12A

| <u>REF NO.</u> | <u>NO.</u> | <u>PART DESCRIPTION</u> | <u>PART NO.</u> |
|----------------|------------|-------------------------|-----------------|
| 1              | 1          | BOLT, AXLE, NOSE GEAR   | 1005927         |
| 2              | 2          | SPACER                  | 1005929         |
| 3              | 1          | ASSEMBLY, NOSE WHEEL    | 1005931         |
| 3.1            | 1          | ASSEMBLY, WHEEL, GROVE  | 49-12AF-001     |
| 3.1.1          | 1          | GREASE RETAINER         | 010-019         |
| 3.1.2          | 2          | SEAL                    | 010-026         |
| 3.1.3          | 1          | WHEEL HALF INNER        | 015-020A        |
| 3.1.4          | 1          | WHEEL HALF OUTER        | 016-020AF       |
| 3.1.5          | 2          | BEARING CORE            | A4050           |
| 3.1.6          | 2          | BEARING CONE            | A4138           |
| 3.1.7          | 3          | BOLT                    | AN4-23A         |
| 3.1.8          | 3          | NUT                     | MS21044N-4      |
| 3.1.9          | 2          | O-RING                  | MS28775-029     |
| 3.1.10         | 6          | WASHER                  | NAS1149F0416    |
| 3.2            | 1          | TIRE                    | XA1AA           |
| 3.3            | 1          | TUBE                    | AD1A2           |
| 4              | 1          | COMMON GREASEZERK       | 1095K41         |
| 5              | 1          | MODIFIED WASHER         | 3A06702-003     |
| 6              | 1          | NUT                     | MS21083N8       |
| 7              | 1          | WASHER                  | NAS1149D0863J   |

WIPLINE MODEL 2100 FLOAT PARTS MANUAL

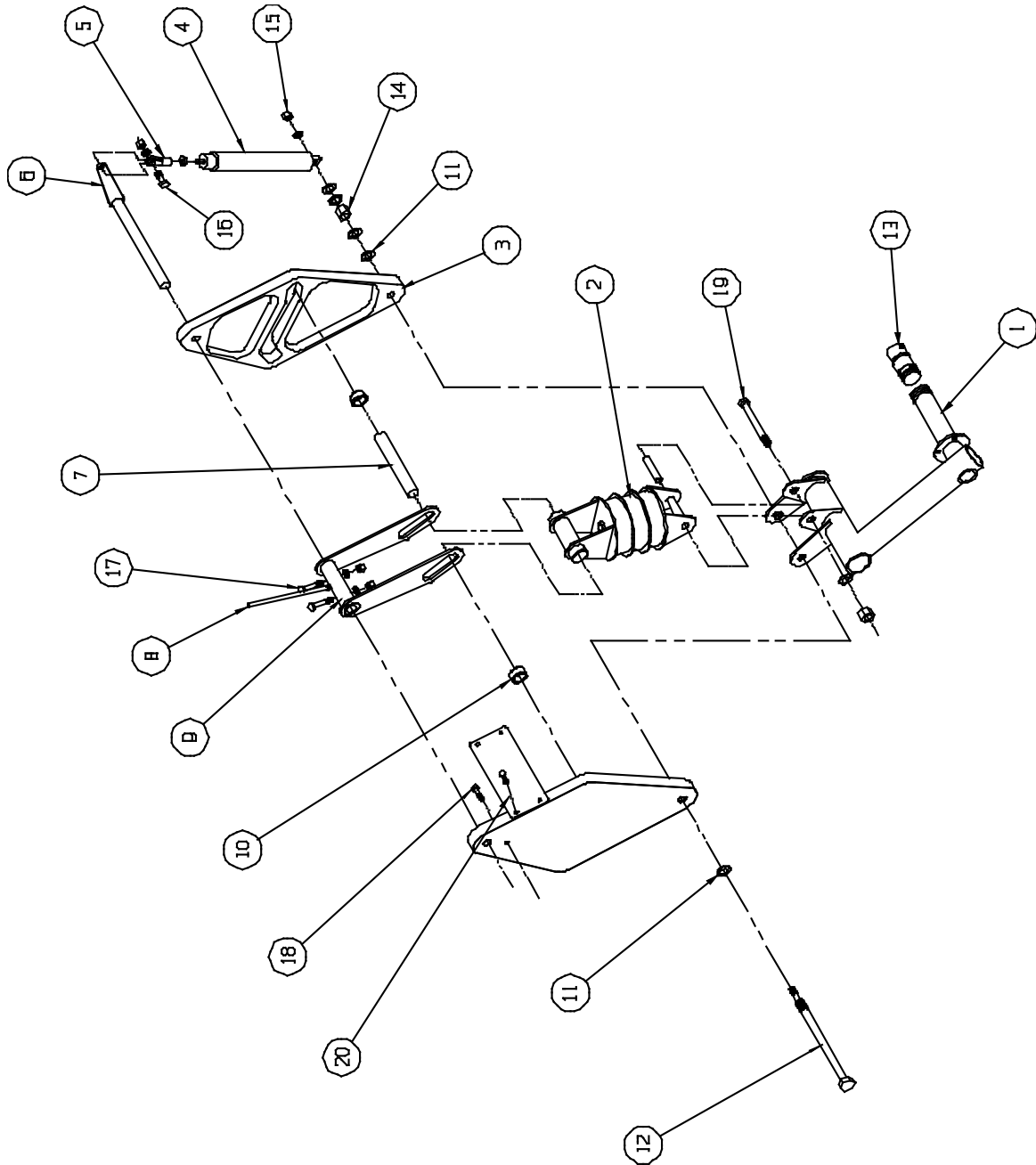


ASSEMBLY – NOSE WHEEL (PARKER)  
FIGURE 12B

WIPLINE MODEL 2100 FLOAT PARTS MANUAL  
ASSEMBLY – NOSE WHEEL (PARKER), FIGURE 12B

| <u>REF NO.</u> | <u>NO.</u> | <u>REQ.</u> | <u>PART DESCRIPTION</u> | <u>PART NO.</u> |
|----------------|------------|-------------|-------------------------|-----------------|
| 1              | 1          |             | COMMON GREASEZERK       | 1095K41         |
| 2              | 2          |             | SPACER                  | 3A06259-001     |
| 3              | 1          |             | MODIFIED BOLT           | 3A06702-002     |
| 4              | 1          |             | MODIFIED WASHER         | 3A06702-003     |
| 5              | 1          |             | NOSE WHEEL ASSEMBLY     | 21A06000-021    |
| 5.1            | 1          |             | PARKER WHEEL ASSEMBLY   | D-30380         |
| 5.1.1          | 1          |             | GASKET                  | 068-30373       |
| 5.1.2          | 2          |             | WHEEL HALF              | 161-30382       |
| 5.1.3          | 3          |             | BOLT                    | AN4-7A          |
| 5.1.4          | 3          |             | NUT                     | MS21044N4       |
| 5.1.5          | 6          |             | WASHER                  | NAS1149F0432P   |
| 5.2            | 1          |             | TIRE                    | XA1AA           |
| 5.3            | 1          |             | TUBE                    | AD1A2           |
| 5.4            | 2          |             | BEARING CORE            | A4050           |
| 5.5            | 2          |             | BEARING CONE            | A4138           |
| 6              | 1          |             | NUT                     | MS21083N8       |
| 7              | 2          |             | WASHER                  | NAS1149D0863J   |

WIPLINE MODEL 2100 FLOAT PARTS MANUAL



INSTALLATION – MAIN GEAR RETRACTION  
FIGURE 13

WIPLINE MODEL 2100 FLOAT PARTS MANUAL

INSTALLATION – MAIN GEAR RETRACTION, FIGURE 13

| <u>REF NO.</u> | <u>NO.</u> | <u>REQ.</u> | <u>PART DESCRIPTION</u>                                    | <u>PART NO.</u> |
|----------------|------------|-------------|--|-----------------|
| 1              | 1          |             | ASS'Y – DRAG LINK L.                                       | 21A04000-077    |
|                | 1          |             | ASS'Y – DRAG LINK R.                                       | 21A04000-076    |
|                | 2          |             | BEARING  | 08FDU12         |
| 2              | 1          |             | ASS'Y SHOCK STRUT  | 21A04000-073    |
|                | 1          |             | ASS'Y UPPER END  | 21A04000-074    |
|                | 1          |             | ASS'Y – LOWER END  | 21A04000-075    |
|                | 2          |             | ZERK – GREASE  | 1095K41         |
|                | 2          |             | WASHER   | NAS1149D0416J   |
|                | 2          |             | WASHER   | NAS1149D0463J   |
|                | 1          |             | DUAL BUSHING ASSEMBLY                                      | 1002087         |
|                | 1          |             | BUSHING ASSEMBLY   | 1001100         |
|                | 1          |             | RETAINING PIN  | 21A04503-004    |
|                | 1          |             | COTTER PIN   | MS24665-151     |
|                | 1          |             | SLEEVES  | 21A04585-002    |
| 3              | 1          |             | TRACK – MAIN GEAR L.                                       | 21A05114-005    |
|                | 1          |             | TRACK – MAIN GEAR R.                                       | 21A05114-006    |
|                | 1          |             | BEARING - UPPER  | 10DU12          |
|                | 1          |             | BEARING – LOWER  | 08DU12          |
| 4              | 1          |             | CYLINDER   | 1002574         |
|                | 2          |             | FITTING - ELBOW  | MS20822-4D      |
| 5              | 1          |             | ROD END  | 21A05705-002    |
|                | 1          |             | JAMB NUT   | AN316-5         |
|                | 1          |             | SPACER   | 21A05260-005    |
|                | 1          |             | CHAMFERED WASHER<br>(CHAMFERED EDGE GOES AGAINST CYLINGER) | MS20002C6       |
| 6              | 1          |             | ARM – RETRACT L.   | 21A05000-017    |
|                | 1          |             | ARM – RETRACT R.   | 21A05000-016    |
| 7              | 1          |             | AXLE – SHOCK STRUT   | 21A04454-006    |

WIPLINE MODEL 2100 FLOAT PARTS MANUAL

INSTALLATION – MAIN GEAR RETRACTION, FIGURE 13

| <u>REF NO.</u> | <u>NO.</u> | <u>REQ.</u> | <u>PART DESCRIPTION</u> | <u>PART NO.</u> |
|----------------|------------|-------------|-------------------------|-----------------|
| 8              | 1          |             | INDICTATOR ASS'Y        | 21A05000-022    |
| 9              | 1          |             | GEAR ACTUATOR           | 21A05000-018    |
| 10             | 2          |             | ROLLER – TRACK          | 21A05520-003    |
| 11             | 2          |             | WASHER – SEALING        | 93783A033       |
| 12             | 1          |             | BOLT – ASSEMBLY         | 21A05000-019    |
| 13             | 1          |             | RETAINER - GREASE       | 21A04263-007    |
| 14             | 1          |             | NUT                     | MS21044N8       |
|                | 2          |             | WASHER                  | NAS1149F0863P   |
| 15             | 1          |             | NUT                     | MS21083N5       |
|                |            |             | A/R WASHER              | NAS1149F0563P   |
| 16             | 1          |             | BOLT                    | AN5-11A         |
|                | 2          |             | WASHER                  | NAS1149F0563P   |
|                | 1          |             | NUT                     | MS21044N5       |
| 17             | 2          |             | BOLT                    | AN4-13A         |
|                | 4          |             | WASHER                  | NAS1149D0416J   |
|                | 2          |             | NUT                     | MS21044N4       |
| 18             | 8          |             | BOLT – TRACK ATTACH     | AN3-6A          |
|                | 8          |             | WASHER                  | NAS1149D0316J   |
|                | 8          |             | WASHER                  | NAS1149D0363J   |
|                | 8          |             | NUT                     | MS21044N3       |
| 19             | 1          |             | BOLT                    | AN8-33A         |
|                | 1          |             | WASHER                  | NAS1149F0832P   |
|                | 1          |             | WASHER                  | NAS1149F0863P   |

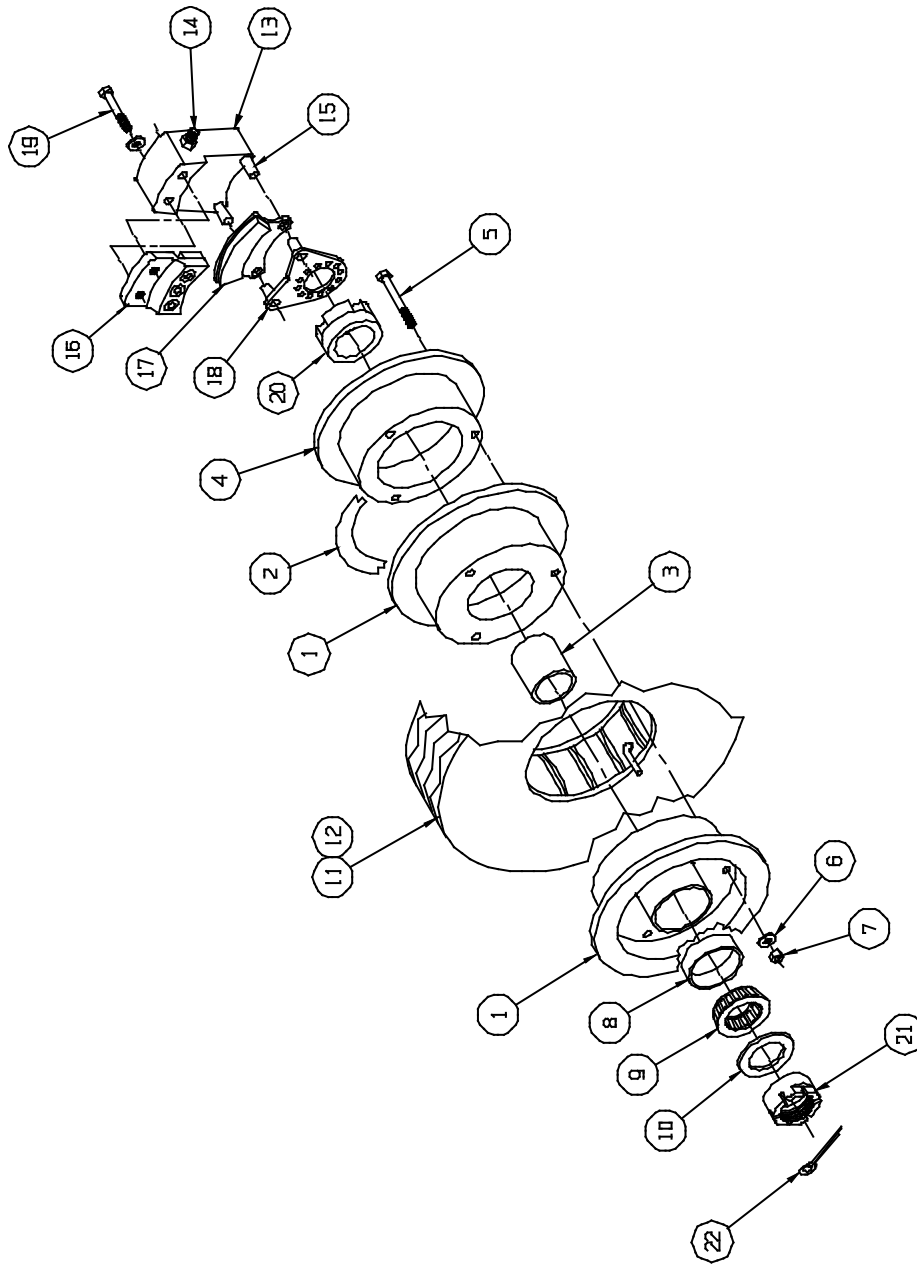
WIPLINE MODEL 2100 FLOAT PARTS MANUAL

INSTALLATION – MAIN GEAR RETRACTION, FIGURE 13

| <u>REF NO.</u> | <u>NO. REQ.</u> | <u>PART DESCRIPTION</u> | <u>PART NO.</u> |
|----------------|-----------------|-------------------------|-----------------|
|                | 1               | NUT                     | MS21044N8       |
| 20             | 1               | PLATE - SEPARATING      | 21A05003-079    |
|                | 4               | BOLT                    | AN3-5A          |
|                | 8               | WASHER                  | NAS1149D0316J   |
|                | 4               | NUT                     | MS21044N3       |



WIPLINE MODEL 2100 FLOAT PARTS MANUAL



ASSEMBLY – MAIN GEAR WHEEL  
FIGURE 14

WIPLINE MODEL 2100 FLOAT PARTS MANUAL

ASSEMBLY – MAIN GEAR WHEEL – CLEVELAND/PARKER - FIGURE 14

| <u>REF NO.</u> | <u>NO.</u> | <u>PART DESCRIPTION</u>           | <u>PART NO.</u> |
|----------------|------------|-----------------------------------|-----------------|
| 1              | 1          | ASS'Y – WHEEL (W/ TUBE & TIRE)    | 3A04000-002     |
|                | 1          | ASS'Y – WHEEL                     | 3A04000-060     |
| 2              | 1          | GASKET - TEFLON                   | 3A04620-001     |
| 3              | 1          | GREASE RETAINER                   | 3A04616-001     |
| 4              | 1          | BRAKE DISC                        | 164-01700       |
| 5              | 3          | BOLT                              | AN4-22A         |
| 6              | 3          | WASHER                            | NAS1149F0432P   |
| 7              | 3          | NUT                               | MS21044N4       |
| 8              | 2          | BEARING CUP                       | 8231            |
|                |            | BEARING CUP, CHROME (OPT.)        | 8231CP          |
| 9              | 2          | BEARING CONE                      | 8125            |
|                |            | BEARING CONE, CHROME (OPT.)       | 8125CP          |
| 10             | 2          | SEAL - INSIDE/OUTSIDE             | 473237          |
| 11             | 1          | TIRE –TYPE III 500 X 5, 6 PLY     | AA1D4           |
| 12             | 1          | TUBE 500 X 5                      | XA1AC           |
|                | 1          | ASS'Y – BRAKE AND TORQUE PLATE    | 075-00800       |
| 13             | 1          | ASS'Y – CALIPER (RIGHT)           | 21A04000-096    |
|                | 1          | ASS'Y – CALIPER (LEFT)            | 21A04000-097    |
|                | 1          | PISTON                            | 062-00300       |
|                | 1          | “O” RING                          | AN6227-23       |
|                | 1          | FITTING - 45 DEGREES (BRAKE LINE) | MS20823-3D      |
| 14             | 1          | SEAT – BLEEDER                    | 081-30619       |

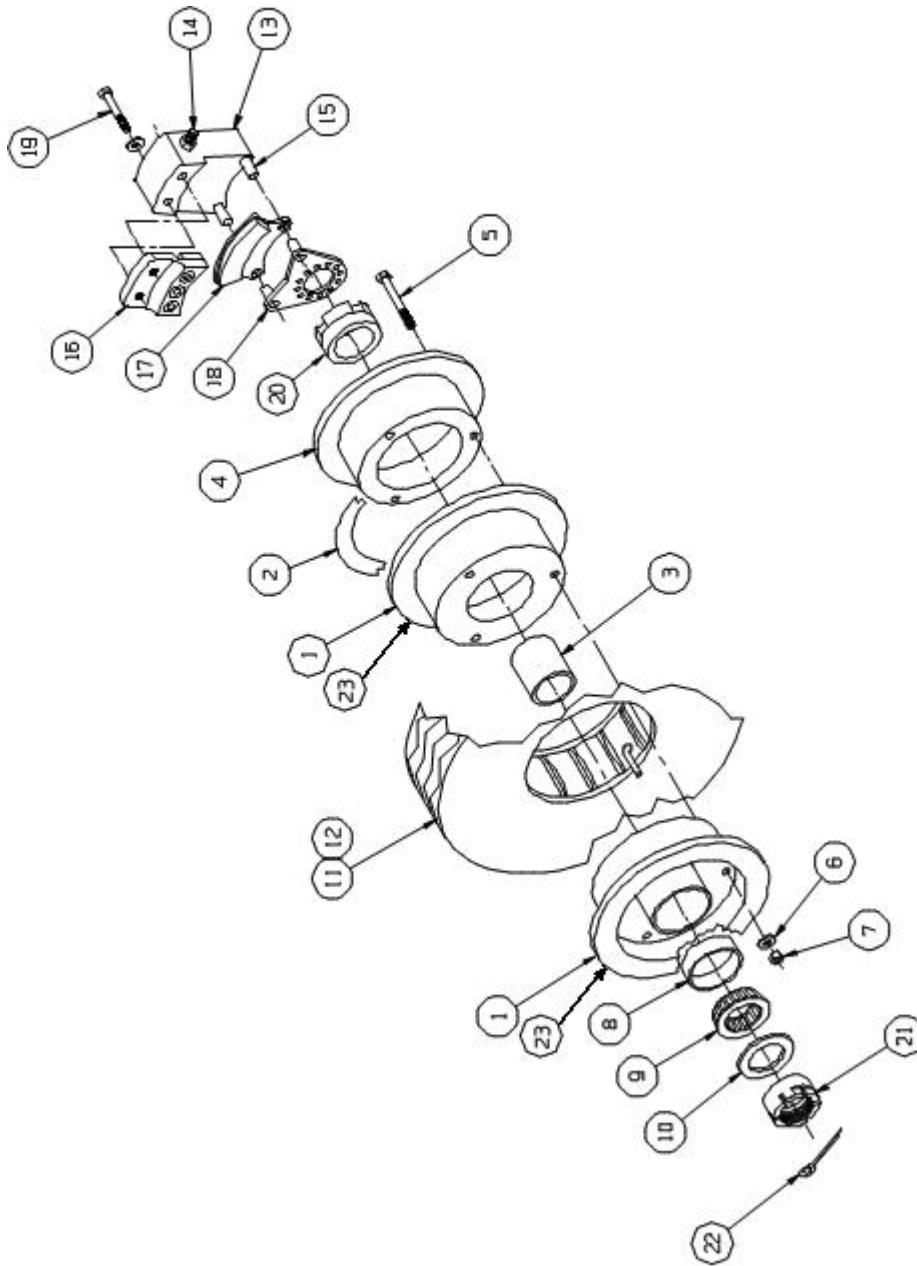
WIPLINE MODEL 2100 FLOAT PARTS MANUAL

ASSEMBLY – MAIN GEAR WHEEL – CLEVELAND/PARKER - FIGURE 14

| <u>REF NO.</u> | <u>NO. REQ.</u> | <u>PART DESCRIPTION</u>    | <u>PART NO.</u> |
|----------------|-----------------|----------------------------|-----------------|
|                | 1               | SCREW – BLEEDER            | 79-3            |
|                | 1               | CAP – BLEEDER              | 183-1           |
| 15             | 2               | ANCHOR BOLT                | 069-00400       |
|                | 2               | WASHER                     | NAS1149F0463P   |
|                | 2               | NUT                        | MS21044N4       |
| 16             | 1               | ASS'Y – BACK PLATE         | 074-02700       |
|                | 1               | PLATE – BACK               | 064-00500       |
|                | 1               | LINING                     | 066-10600       |
|                | 3               | RIVET                      | 105-2           |
| 17             | 1               | ASS'Y – PRESSURE PLATE     | 073-04800       |
|                | 1               | PLATE - PRESSURE           | 063-00500       |
|                | 1               | LINING                     | 066-10600       |
|                | 3               | RIVET                      | 105-2           |
| 18             | 1               | BRAKE TORQUE PLATE - LEFT  | 3A04711-001     |
|                | 1               | BRAKE TORQUE PLATE – RIGHT | 3A04711-002     |
| 19             | 1               | BOLT                       | AN4H15A         |
|                | 1               | WASHER                     | NAS1149F0432P   |
| 20             | 1               | SPACER                     | 3A04093-001     |
| 21             | 1               | NUT – AXLE                 | 3A04268-003     |
| 22             | 1               | COTTER PIN                 | MS24665-351     |

THIS PAGE INTENTIONALLY LEFT BLANK

WIPLINE MODEL 2100 FLOAT PARTS MANUAL



ASSEMBLY – MAIN GEAR WHEEL – GROVE/WIPAIRE  
FIGURE 14A

WIPLINE MODEL 2100 FLOAT PARTS MANUAL

ASSEMBLY – MAIN GEAR WHEEL – GROVE/WIPAIRE 14A

| <u>REF NO.</u> | <u>NO.</u> | <u>PART DESCRIPTION</u>   | <u>PART NO</u>      |
|----------------|------------|---|---------------------|
| 1              | 1          | ASS'Y – WHEEL AND BRAKE (COMPLETE)<br>INCLUDES ALL ITEMS BELOW EXCEPT TIRE & TUBE | 21A04000-125        |
| 2              | 1          | GASKET - TEFLON   | 3A04620-001         |
| 3              | 1          | GREASE RETAINER   | 010-009             |
| 4              | 1          | BRAKE DISC  | 018-001             |
| 5              | 3          | BOLT  | AN4-23A             |
| 6              | 3          | WASHER  | NAS1149F0432P       |
| 7              | 3          | NUT   | MS21044N4           |
| 8              | 2          | BEARING RACE (CHROME)<br>Non chrome   | 0823120027<br>08231 |
| 9              | 2          | BEARING CUP (CHROME)<br>Non chrome  | 0812520027<br>08125 |
| 10             | 2          | SEAL - INSIDE/OUTSIDE   | 473237              |
| 11             | 1          | TIRE –TYPE III 500 x 5, 6 PLY   | AA1D4               |
| 12             | 1          | TUBE 500 X 5  | XA1AC               |
| 13             | 1          | BRAKE ASSEMBLY  | 32-1                |
|                | 2          | PISTON  | 017-003             |
|                | 2          | O-RING  | MS28775-217         |
| 14             | 1          | BLEEDER ASSEMBLY  | 220-0063            |
|                | 1          | FITTING 45° BRAKE LINE  | MS20823-3D          |
| 15             | 2          | TORQUE PIN  | 013-001             |
|                | 2          | NUT   | MS21044N4           |

WIPLINE MODEL 2100 FLOAT PARTS MANUAL

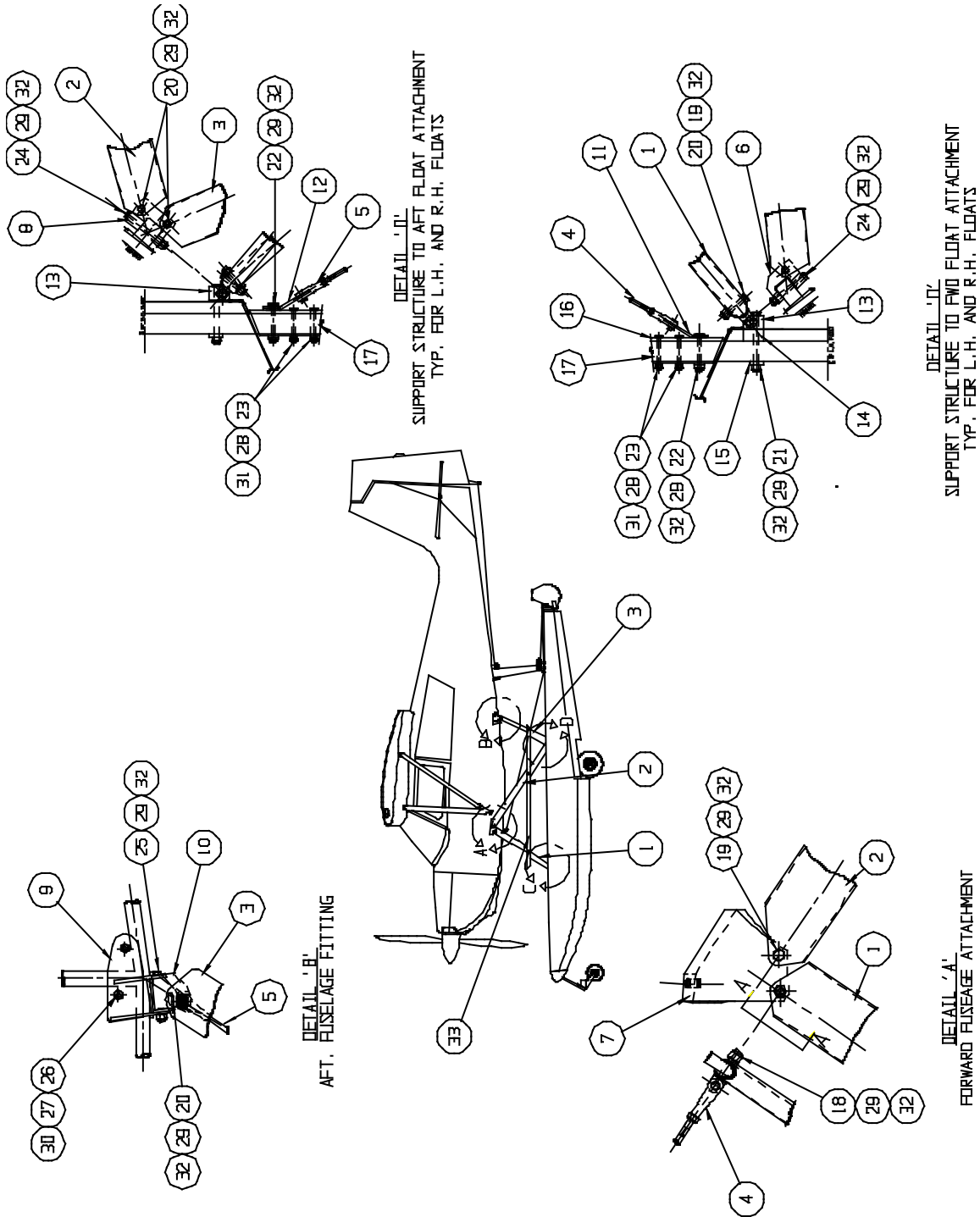
ASSEMBLY – MAIN GEAR WHEEL – GROVE/WIPAIRE 14A

| <u>REF NO.</u> | <u>NO.</u> | <u>REQ.</u> | <u>PART DESCRIPTION</u>      | <u>PART NO.</u> |
|----------------|------------|-------------|------------------------------|-----------------|
| 16             | 1          |             | ASS'Y – BACK PLATE           | 10-3            |
|                | 1          |             | PAD                          | 66-111          |
|                | 3          |             | RIVET                        | 105-2           |
| 17             | 1          |             | ASS'Y – PRESSURE PLATE       | 11-2            |
|                | 1          |             | LINING                       | 66-111          |
|                | 3          |             | RIVET                        | 105-2           |
| 18             | 1          |             | BRAKE TORQUE PLATE           | 020-001         |
| 19             | 3          |             | BOLT                         | AN4H-15A        |
|                | 3          |             | WASHER                       | NAS1149F0432P   |
| 20             | 1          |             | SPACER                       | 3A04093-001     |
| 21             | 1          |             | NUT – AXLE                   | 3A04268-003     |
| 22             | 1          |             | COTTER PIN                   | MS24665-351     |
| 23             | 1          |             | WHEEL HALF-INNER             | 015-002         |
|                | 1          |             | WHEEL HALF-OUTER             | 016-002         |
|                |            |             | (HALVES NOT SOLD SEPERATELY) |                 |

THIS PAGE INTENTIONALLY LEFT BLANK



WIPLINE MODEL 2100 FLOAT PARTS MANUAL



INSTALLATION – STRUTS, WIRES, AND SPREADER BARS SCOUT  
FIGURE 15

WIPLINE MODEL 2100 FLOAT PARTS MANUAL

INSTALLATION – STRUTS, WIRES, & SPREADER BARS SCOUT, FIGURE 15

| <u>REF NO.</u> | <u>NO.</u> | <u>REQ.</u> | <u>PART DESCRIPTION</u>               | <u>PART NO.</u> |
|----------------|------------|-------------|---------------------------------------|-----------------|
| 1              | 2          |             | ASS'Y - STRUT - FRONT                 | 21A02000-168    |
| 2              | 2          |             | ASS'Y - STRUT - CENTER                | 21A02000-167    |
| 3              | 2          |             | STRUT – REAR                          | 21A02000-231    |
| 4              | 2          |             | ASS'Y – DRAG WIRE – FWD               | 21A02000-149    |
|                | 1          |             | CLEVIS L.                             | AN665-61LS *    |
|                | 1          |             | CLEVIS R.                             | AN665-46RS *    |
|                | 1          |             | CHECK NUT L.                          | AN316-C5L       |
|                | 1          |             | CHECK NUT R.                          | AN316-C5R       |
|                | 1          |             | PIN – CLEVIS                          | SP4Z47MOD       |
|                | 1          |             | PIN – CLEVIS                          | SP4ZF6          |
|                | 1          |             | PIN – COTTER                          | SP90E7          |
|                | 1          |             | PIN - COTTER                          | SP90C5          |
| 5              | 2          |             | ASS'Y – DRAG WIRE – AFT               | 21A02000-139    |
|                | 1          |             | CLEVIS L.                             | AN665-46LS *    |
|                | 1          |             | CLEVIS R.                             | AN665-46RS *    |
|                | 1          |             | NUT CHECK L.                          | AN316-C5L       |
|                | 1          |             | NUT CHECK R.                          | AN316-C5R       |
|                | 2          |             | PIN – CLEVIS                          | SP4ZF6          |
|                | 2          |             | PIN – COTTER                          | SP90C5          |
| 6              | 2          |             | FITTING – LOWER FRONT STRUT           | 21A02071-003    |
| 7              | 1          |             | FITTING – UPPER FRONT STRUT L.        | 21A02021-001    |
|                | 1          |             | FITTING – UPPER FRONT STRUT R.        | 21A02021-002    |
| 8              | 1          |             | FITTING – LOWER AFT STRUT L.          | 21A02067-005    |
|                | 1          |             | FITTING – LOWER AFT STRUT R.          | 21A02067-006    |
| 9              | 1          |             | ASS'Y – UPPER STRUT FITTING – REAR L. | 21A02000-159    |
|                | 1          |             | ASS'Y – UPPER STRUT FITTING – REAR R. | 21A02000-158    |

WIPLINE MODEL 2100 FLOAT PARTS MANUAL

INSTALLATION – STRUTS, WIRES, & SPREADER BARS SCOUT, FIGURE 15

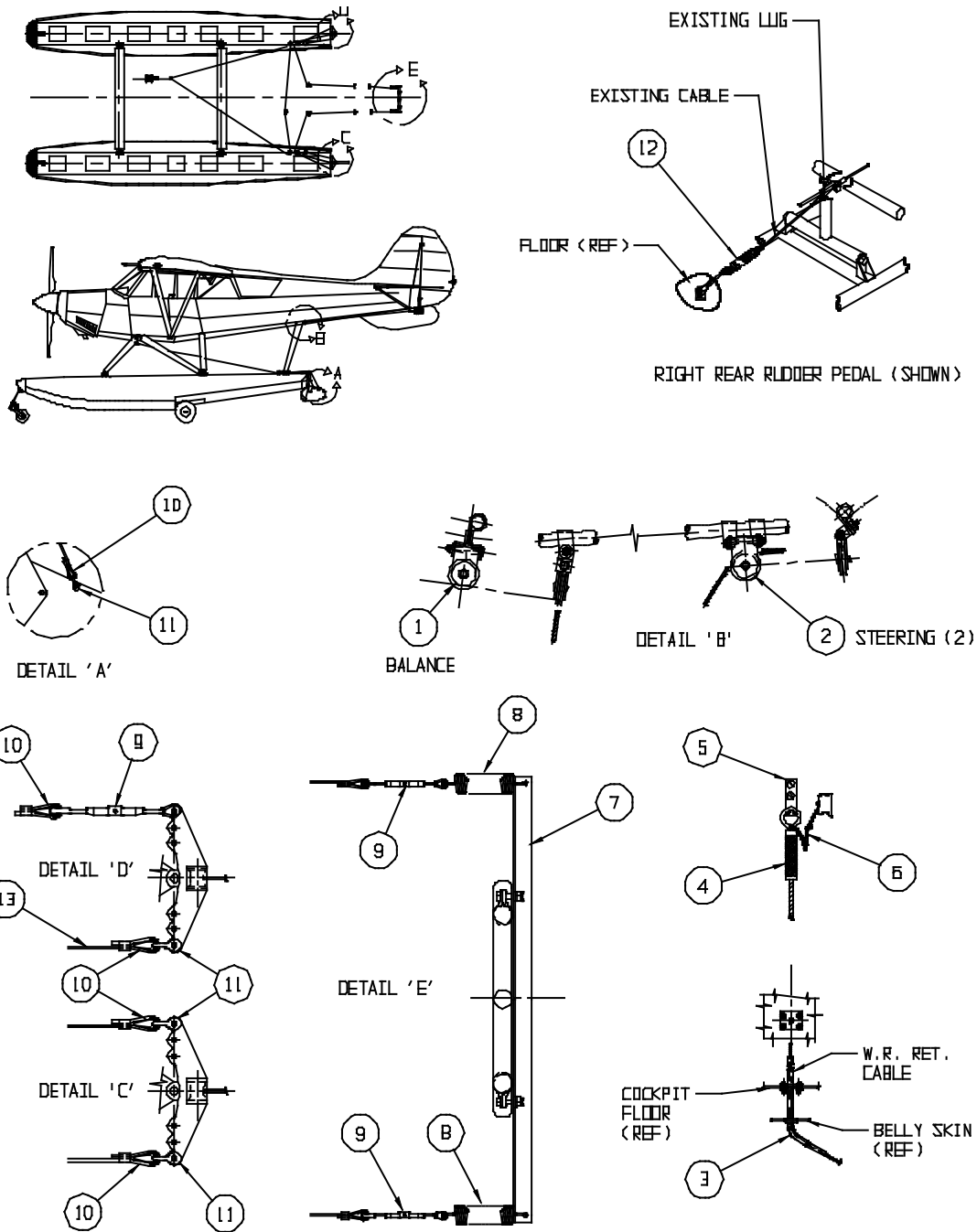
| <u>REF NO.</u> | <u>NO.</u> | <u>REQ.</u> | <u>PART DESCRIPTION</u>   | <u>PART NO.</u> |
|----------------|------------|-------------|---------------------------|-----------------|
| 10             | 2          |             | FITTING – UPPER AFT STRUT | 21A02032-007    |
| 11             | 2          |             | WIRE PULL – FWD LOWER     | 21A02462-004    |
| 12             | 2          |             | WIRE PULL – AFT LOWER     | 21A02519-007    |
|                | 2          |             | WASHER – WIRE PULL        | 21A02154-008    |
| 13             | 4          |             | BLOCK – DECK FITTING      | 21A03032-006    |
| 14             | 4          |             | SPACER                    | 21A03214-003    |
| 15             | 4          |             | SPACER - BEARING          | 21A03154-007    |
| 16             | 2          |             | SPREADER BAR              | 21A03356-047    |
| 17             | 4          |             | TUBE – SPREADER BAR MOUNT | 21A03115-001    |
| 18             | 4          |             | EYE BOLT                  | AN46-16A        |
| 19             | 4          |             | BOLT                      | AN6-30A         |
| 20             | 8          |             | BOLT                      | AN6-16A         |
| 21             | 4          |             | BOLT                      | AN6-42A         |
| 22             | 2          |             | BOLT – LUG AFT            | AN6-30A         |
|                | 2          |             | BOLT – LUG FWD            | AN6-26A         |
| 23             | 4          |             | BOLT                      | AN5-24A         |
| 24             | 2          |             | BOLT                      | AN6-37A         |
| 25             | 2          |             | BOLT                      | AN6-26A         |
| 26             | 4          |             | BOLT                      | AN4-6A          |

WIPLINE MODEL 2100 FLOAT PARTS MANUAL

INSTALLATION – STRUTS, WIRES, & SPREADER BARS SCOUT, FIGURE 15

| <u>REF NO.</u> | <u>NO.</u> | <u>PART DESCRIPTION</u> | <u>PART NO.</u> |
|----------------|------------|-------------------------|-----------------|
| 27             | 4          | WASHER                  | NAS1149D0463J   |
| 28             | 8          | WASHER                  | NAS1149D0563J   |
| 29             | 24         | WASHER                  | NAS1149D0663J   |
| 30             | 4          | NUT                     | MS21044N4       |
| 31             | 8          | NUT                     | MS21044N5       |
| 32             | 24         | NUT                     | MS21044N6       |
| 33             | 1          | STEP – RIGHT            | 21A02369-038    |
|                | 1          | STEP – LEFT             | 21A02369-039    |
|                | 4          | BOLT – ATTACH FWD & AFT | AN3-20A         |
|                | 2          | BOLT – ATTACH CENTER    | AN3-31A         |
|                | 2          | SPACER – CENTER STRUT   | 9A02604-002     |
|                | 12         | WASHER                  | NAS1149D0316J   |
|                | 6          | NUT                     | MS21044N3       |
|                | 4          | HOLE PLUG 1 INCH        | BPF             |

WIPLINE MODEL 2100 FLOAT PARTS MANUAL



INSTALLATION – STEERING AND RETRACT SYSTEM SCOUT  
FIGURE 16

WIPLINE MODEL 2100 FLOAT PARTS MANUAL

INSTALLATION – STEERING AND RETRACT SYSTEM SCOUT, FIGURE 16

| <u>REF NO.</u> | <u>NO.</u> | <u>REQ.</u> | <u>PART DESCRIPTION</u> | <u>PART NO.</u>         |
|----------------|------------|-------------|-------------------------|-------------------------|
| 1              | 1          |             | ASS'Y – BALANCE PULLEY  | 21A08000-126            |
|                | 1          |             | ASS'Y – PULLEY BRACKET  | 21A08000-125            |
|                | 1          |             | BRACKET                 | 21A08008-150            |
|                | 1          |             | SPACER - BLOCK          | 21A08230-002            |
|                | 1          |             | PULLEY                  | MS20219-2               |
|                | 1          |             | BOLT                    | AN4-7A                  |
|                | 1          |             | WASHER                  | NAS1149D0463J           |
|                | 1          |             | NUT                     | MS21083N4               |
|                | 2          |             | EYE BOLT                | AN42B4A                 |
|                | 1          |             | BOLT                    | AN3-17A                 |
|                |            |             | A/R WASHER              | NAS1149D0363J           |
|                | 3          |             | NUT                     | MS21044N3               |
|                | 2          | 2           |                         | ASS'Y – STEERING PULLEY |
| 1              |            |             | ASS'Y – PULLEY BRACKET  | 21A08000-125            |
| 1              |            |             | BRACKET                 | 21A08008-150            |
| 1              |            |             | SPACER - BLOCK          | 21A08230-002            |
| 1              |            |             | PULLEY                  | MS20219-2               |
| 1              |            |             | BOLT                    | AN4-7A                  |
| 1              |            |             | WASHER                  | NAS1149D0463J           |
| 1              |            |             | NUT                     | MS21083N4               |
| 3              |            |             | CLAMP                   | AN742D12                |
| 2              |            |             | EYE BOLT                | AN42B4A                 |
| 1              |            |             | BOLT                    | AN3-17A                 |
|                |            |             | A/R WASHER              | NAS1149D0363J           |
| 4              |            |             | NUT                     | MS21044N3               |
| 2              |            |             | BOLTS                   | AN3-4A                  |
| 4              |            | WASHER      | NAS1149F0332P           |                         |
| 3              | 1          |             | ASS'Y – RETRACT TUBE    | 21A08000-129            |
|                | 1          |             | GROMMET – RUBBER        | MS354489-11             |
|                | 4          |             | SCREW – ATTACH          | AN520-10-12             |
|                | 4          |             | WASHER                  | AN970-3                 |

WIPLINE MODEL 2100 FLOAT PARTS MANUAL

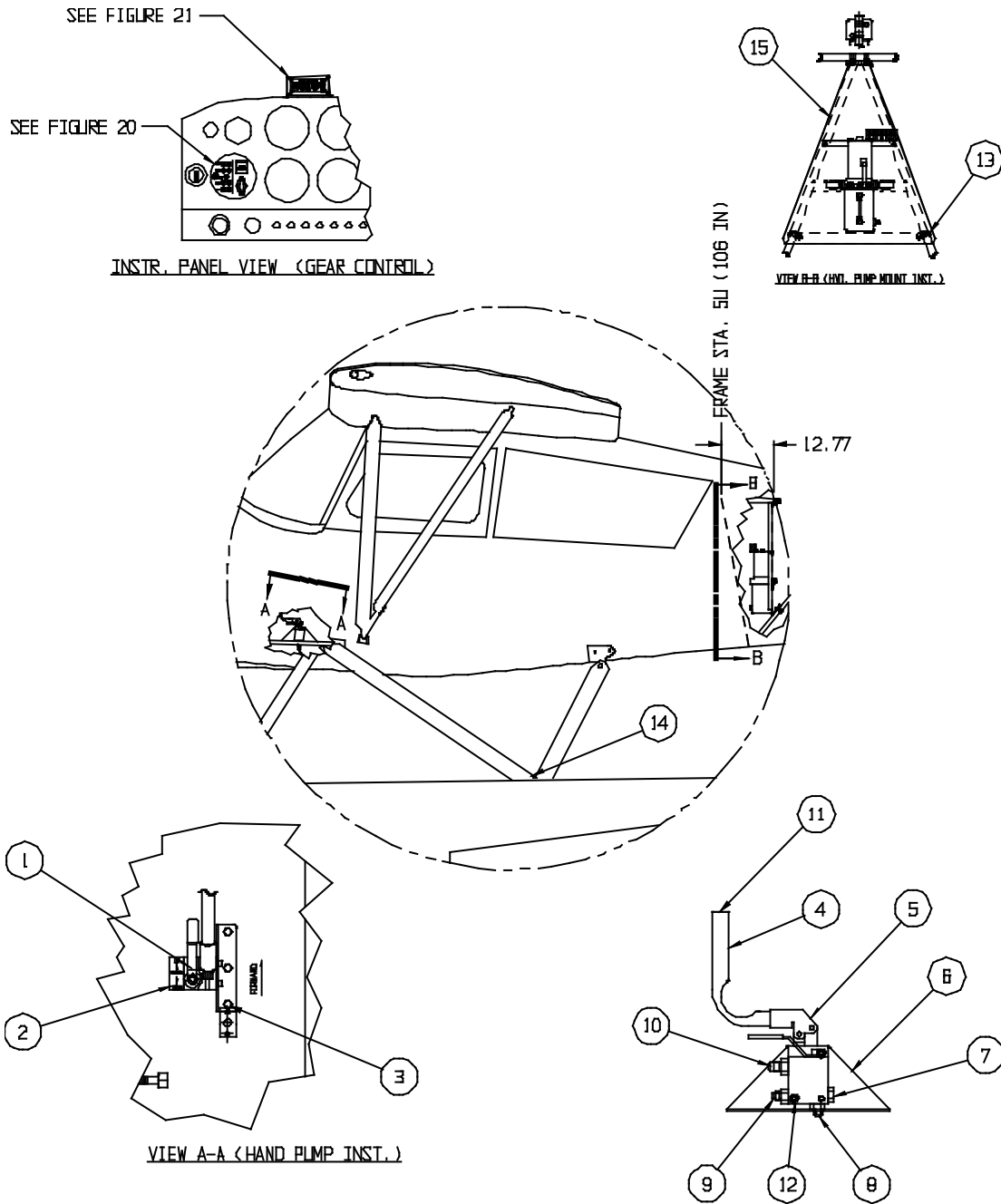
INSTALLATION – STEERING AND RETRACT SYSTEM SCOUT, FIGURE 16

| <u>REF NO.</u> | <u>NO. REQ.</u> | <u>PART DESCRIPTION</u> | <u>PART NO.</u> |
|----------------|-----------------|-------------------------|-----------------|
|                | 4               | NUT                     | MS21044N3       |
| 4              | 1               | HANDLE – RETRACT        | 21A08274-007    |
|                | 1               | SET SCREW               | 33056           |
| 5              | 1               | HOOK – RETAINER CLIP    | 21A08487-001    |
|                | 2               | SCREW – ATTACH          | AN526-10R9      |
|                | 2               | NUT                     | MS21044N3       |
| 6              | 1               | CHAIN RETRACT 15 INCH   | 21A08747-001    |
| 7              | 1               | EXTENSION – RUDDER HORN | 21A08359-201    |
|                | 2               | BOLT – ATTACH           | AN3-6A          |
|                | 2               | WASHER                  | NAS1149D0363J   |
|                | 2               | NUT                     | MS21044N3       |
| 8              | 2               | SPRING                  | 21A08525-005    |
| 9              | 3               | TURNBUCKLE – BARREL     | MS21251B3S      |
|                | 3               | FORK – TERMINAL         | MS21255-3RS     |
|                | 1               | PIN ATTACH              | MS20392-2C13    |
|                | 1               | PIN – COTTER            | MS24665-132     |
|                | 1               | WASHER                  | NAS1149D0316J   |
|                | 3               | EYE – TERMINAL          | MS21255-3LS     |
| 10             | 8               | THIMBLE – CABLE         | AN100-3         |
|                | 9               | NICOPRESS – CLAMP       | MS51844-43      |
| 11             | 5               | SHACKLES                | MS20115-3       |
|                | 5               | PIN – ATTACH            | MS20392-2C13    |
|                | 5               | PIN – COTTER            | MS24665-132     |
| 12             |                 | A/R CABLE 3/32 x 7      | RM690           |

THIS PAGE INTENTIONALLY LEFT BLANK



WIPLINE MODEL 2100 FLOAT PARTS MANUAL



INSTALLATION – HYDRAULIC SYSTEM SCOUT  
FIGURE 17

WIPLINE MODEL 2100 FLOAT PARTS MANUAL

INSTALLATION – HYDRAULIC SYSTEM SCOUT, FIGURE 17

| <u>REF NO.</u> | <u>NO.</u> | <u>REQ.</u> | <u>PART DESCRIPTION</u> | <u>PART NO.</u> |
|----------------|------------|-------------|-------------------------|-----------------|
| 1              | 1          |             | ASS'Y - HAND PUMP       | 21A09000-194    |
| 2              | 1          |             | ASS'Y – PLACARD         | 21A3-7379-1     |
| 3              | 3          |             | BOLT – ATTACH           | AN3-6A          |
|                | 3          |             | WASHER                  | AN970-3         |
|                | 3          |             | WASHER                  | NAS1149F0363P   |
|                | 3          |             | NUT                     | MS21044N3       |
| 4              | 1          |             | HANDLE                  | 21A09396-001    |
| 5              | 1          |             | HAND PUMP (ONLY)        | 642873          |
| 6              | 1          |             | BRACKET – PUMP ATTACH   | 21A09156-129    |
| 7              | 1          |             | PLUG                    | AN814-4D        |
|                | 1          |             | “O” RING                | MS28775-012     |
| 8              | 1          |             | UNION                   | 21A09746-001    |
|                | 1          |             | “O” RING                | MS28775-012     |
| 9              | 1          |             | UNION                   | AN815-4D        |
|                | 1          |             | “O” RING                | MS28775-012     |
| 10             | 1          |             | UNION                   | AN919-6D        |
|                | 1          |             | “O” RING                | MS28775-012     |
| 11             | 1          |             | CAP PLUG                | 9283K13         |
| 12             | 2          |             | CAP SCREW – ATTACH      | MS16997-77      |
|                | 2          |             | LOCK WASHER             | MS35333-40      |
|                | 2          |             | WASHER                  | NAS1149F0563P   |
| 13             | 4          |             | CLAMP – MOUNTING        | AN742-16C       |
|                | 8          |             | BOLT – ATTACH           | AN3-4A          |
|                | 16         |             | WASHER                  | NAS1149D0316J   |

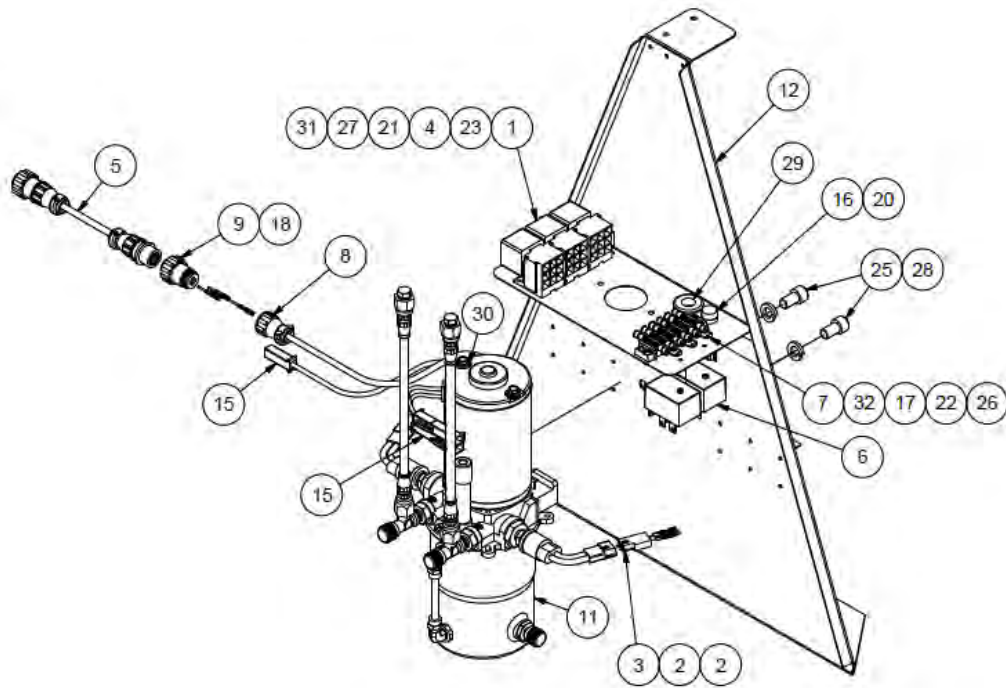
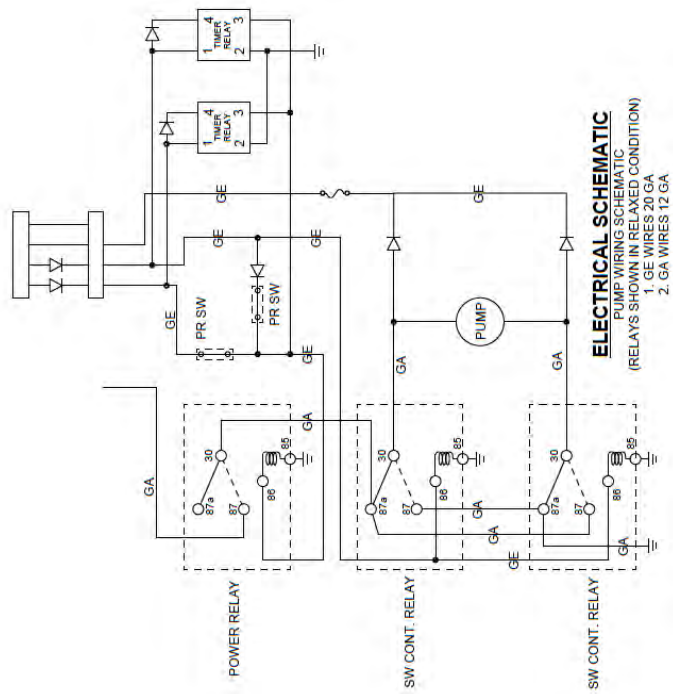
WIPLINE MODEL 2100 FLOAT PARTS MANUAL

INSTALLATION – HYDRAULIC SYSTEM SCOUT, FIGURE 17

| <u>REF NO.</u> | <u>NO. REQ.</u> | <u>PART DESCRIPTION</u>                                  | <u>PART NO.</u> |
|----------------|-----------------|--|-----------------|
|                | 8               | NUT  | MS21044N3       |
| 14             | 2               | ASS'Y – BRAKE LINE (NOT SHOWN)                           | 21A04000-080    |
|                | 2               | FITTING  | 63-190600-3     |
| 15             | 1               | ASS'Y – HYD. PUMP<br>COMPLETE WITH MOUNT – SEE FIGURE 18 | 21A09000-216    |

THIS PAGE INTENTIONALLY LEFT BLANK

# WIPLINE MODEL 2100 FLOAT PARTS MANUAL



ASSEMBLY – HYDRAULIC PUMP SCOUT  
FIGURE 18

WIPLINE MODEL 2100 FLOAT PARTS MANUAL

ASSEMBLY – HYDRAULIC PUMP SCOUT, FIGURE 18

| <u>REF NO.</u> | <u>NO.</u> | <u>REQ.</u> | <u>PART DESCRIPTION</u>       | <u>PART NO.</u> |
|----------------|------------|-------------|-------------------------------|-----------------|
| 1              | 3          |             | RELAY, 12V, 5 PRONG           | 0-332-209-137   |
| 2              | 4          |             | PIN, CRIMP FEMALE, 1/8" DIA   | 02-09-1104      |
| 3              | 2          |             | CONNECTOR PLUG, MALE, 2 CONN. | 03-09-1022      |
| 4              | 14         |             | TERMINAL                      | 1-901-355-917   |
| 5              | 1          |             | CABLE, DIODE ADAPTOR          | 1004949         |
| 6              | 1          |             | TIMER RELAY HARNESS           | 1005042         |
| 7              | 3          |             | DIODE, 2-1/2"                 | 1N4004          |
| 8              | 2          |             | CLAMP, CABLE, CPC SIZE 11     | 206062-3        |
| 9              | 1          |             | PLUG, MALE, CPC SIZE 1, 4 PIN | 206429-1        |
| 10             | 1          |             | CPC FREE HANG, 4 PIN, FEMALE  | 206430-2        |
| 11             | 1          |             | ASSEMBLY, HYDRAULIC PUMP, 12V | 21A09000-215    |
| 12             | 1          |             | ASSEMBLY, BRACKET, HYD PUMP   | 21A09000-217    |
| 13             | 6 FT       |             | WIRE, 12 AWG, WHITE           | 22759-16-12-9   |
| 14             | 10.1 FT    |             | WIRE, 20 AWG, WHITE           | 22759-16-20-9   |
| 15             | 3          |             | HOUSING CONNECTOR ASSEMBLY    | 2601048-200     |
| 16             | 1          |             | FUSE HOLDER                   | 3453LF2A        |
| 17             | 1          |             | TERMINAL BLOCK, 6 CONNECTOR   | 6-140           |
| 18             | 3          |             | PIN, CRIMP SOCKET, 24-20G     | 66103-4         |
| 19             | 3          |             | CRIMP SOCKET, FEMALE          | 66105-4         |
| 20             | 1          |             | FUSE, 250V, (S2565-1)         | AGC-1           |
| 21             | 3          |             | BOLT                          | AN3-3A          |
| 22             | 2          |             | SCREW, MACHINE, TRUSS HEAD    | AN526-632R8     |

WIPLINE MODEL 2100 FLOAT PARTS MANUAL

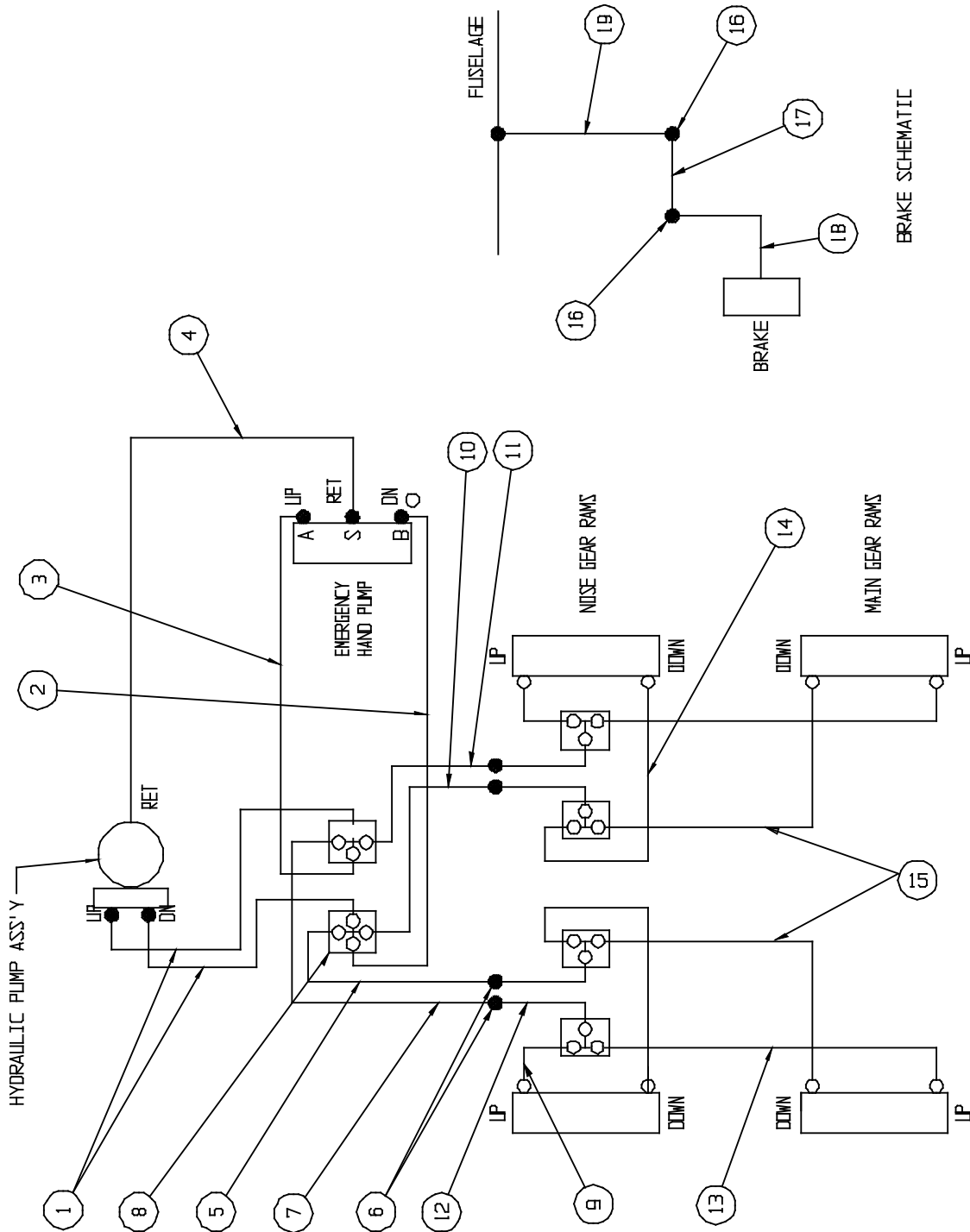
ASSEMBLY – HYDRAULIC PUMP SCOUT, FIGURE 18

| <u>REF NO.</u> | <u>NO. REQ.</u> | <u>PART DESCRIPTION</u>    | <u>PART NO.</u> |
|----------------|-----------------|----------------------------|-----------------|
| 23             | 3               | SOCKET, 5 PRONG, PLASTIC   | BR05FW          |
| 24             | 1.5 FT          | HEAT SHRINK, TUBING, BLACK | HS105-3/16-0    |
| 25             | 2               | SOCKET HEAD CAP SCREW      | MS16997-96      |
| 26             | 2               | NUT                        | MS21044N06      |
| 27             | 3               | NUT                        | MS21044N3       |
| 28             | 2               | WASHER, SPLIT              | MS35338-46      |
| 29             | 1               | GROMMET, RUBBER            | MS35489-14      |
| 30             | 4               | WASHER                     | NAS1149D0363J   |
| 31             | 6               | WASHER                     | NAS1149F0332P   |
| 32             | 12              | RING CONNECTOR             | R-3             |

THIS PAGE INTENTIONALLY LEFT BLANK



WIPLINE MODEL 2100 FLOAT PARTS MANUAL



HYDRAULIC SCHEMATIC  
FIGURE 19

WIPLINE MODEL 2100 FLOAT PARTS MANUAL

HYDRAULIC SCHEMATIC, FIGURE 19

| <u>REF NO.</u> | <u>NO.</u> | <u>REQ.</u> | <u>PART DESCRIPTION</u>        | <u>PART NO.</u> |
|----------------|------------|-------------|--------------------------------|-----------------|
| 1              | 2          |             | ASS'Y – HYDRAULIC HOSE         | 21A09000-204    |
| 2              | 1          |             | ASS'Y – HYDRAULIC HOSE         | 21A09000-223    |
| 3              | 1          |             | ASS'Y – HYDRAULIC HOSE         | 21A09000-207    |
| 4              | 1          |             | ASS'Y – HYDRAULIC HOSE         | 21A09000-208    |
| 5              | 1          |             | ASS'Y – HYDRAULIC HOSE         | 21A09000-206    |
| 6              | 4          |             | FITTING – ELBOW (DECK FITTING) | AN833-4D        |
|                | 4          |             | NUT                            | AN924-4D        |
|                | 4          |             | WASHER                         | NAS1149D0763J   |
| 7              | 1          |             | ASS'Y – HYDRAULIC HOSE         | 21A09000-205    |
| 8              | 2          |             | FITTING – QUAD                 | AN827-4D        |
| 9              | 2          |             | ASS'Y – HYDRAULIC HOSE         | 21A09000-218    |
| 10             | 1          |             | ASS'Y – HYDRAULIC HOSE         | 21A09000-205    |
| 11             | 1          |             | ASS'Y – HYDRAULIC HOSE         | 21A09000-206    |
| 12             | 4          |             | ASS'Y – HYDRAULIC HOSE         | 21A09000-222    |
| 13             | 2          |             | ASS'Y – HYDRAULIC HOSE         | 21A09000-220    |
| 14             | 2          |             | ASS'Y – HYDRAULIC HOSE         | 21A09000-219    |
| 15             | 2          |             | ASS'Y – HYDRAULIC HOSE         | 21A09000-221    |
| 16             | 2          |             | FITTING – ELBOW                | AN833-3D        |
|                | 4          |             | WASHER                         | NAS1149D0663J   |
|                | 2          |             | NUT                            | AN924-3D        |

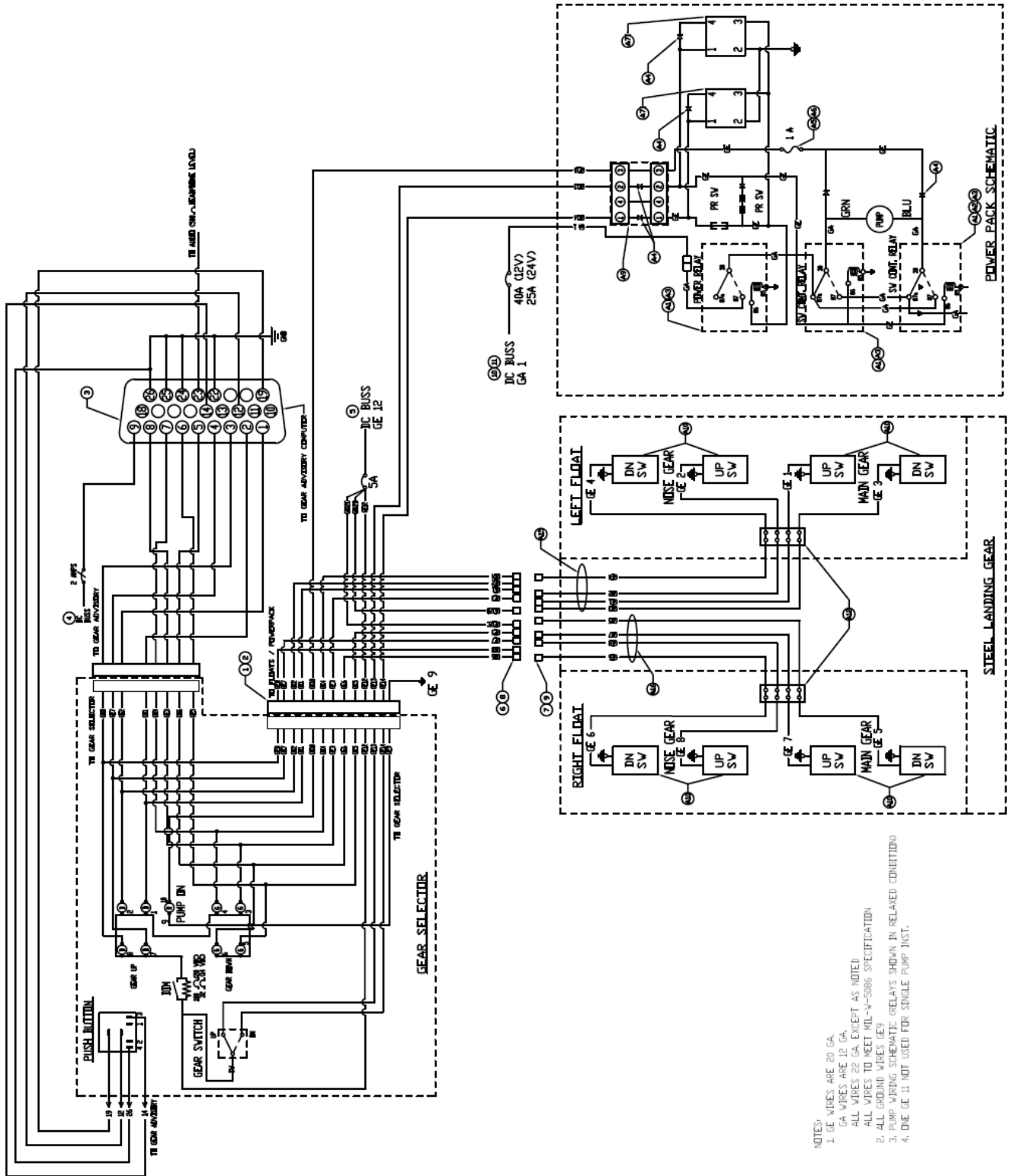
WIPLINE MODEL 2100 FLOAT PARTS MANUAL

HYDRAULIC SCHEMATIC, FIGURE 19

| <u>REF</u> | <u>NO.</u>  |                                       | <u>PART NO.</u> |
|------------|-------------|---------------------------------------|-----------------|
| <u>NO.</u> | <u>REQ.</u> | <u>PART DESCRIPTION</u>               |                 |
| 17         | 1           | LINE ASS'Y – HARD                     | 21A04000-079    |
| 18         | 1           | LINE ASS'Y – FLEX                     | 21A04000-078    |
| 19         | 2           | ASS'Y – BRAKE LINE (FUSELAGE TO DECK) | 21A04000-080    |

THIS PAGE INTENTIONALLY LEFT BLANK

# WIPLINE MODEL 2100 FLOAT PARTS MANUAL



- NOTES:
1. CE WIRES ARE 20 GA.
  2. GA WIRES ARE 12 GA.
  3. ALL WIRES TO MEET MIL-A-5086 SPECIFICATION
  4. ALL GROUND WIRES ARE 12 GA.
  5. PUMP WIRING SCHEMATIC RELAYS SHOWN IN RELATED CIRCUITRY
  6. ONE CE 11 NOT USED FOR SINGLE PUMP INST.

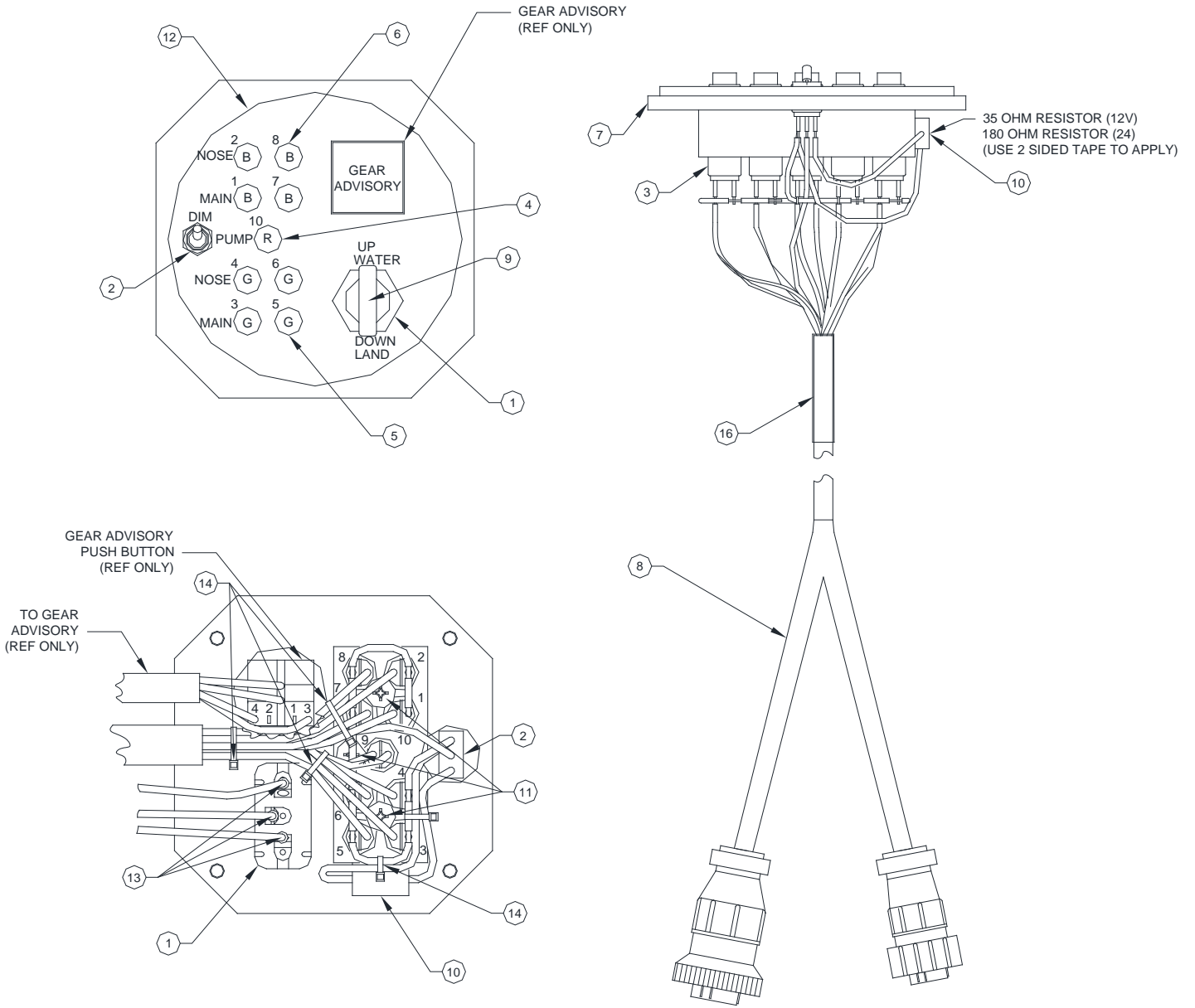
ELECTRICAL SCHEMATIC  
FIGURE 20

WIPLINE MODEL 2100 FLOAT PARTS MANUAL

ELECTRICAL SCHEMATIC, FIGURE 20

| <u>REF</u><br><u>NO.</u> | <u>NO.</u><br><u>REQ.</u> | <u>PART DESCRIPTION</u>             | <u>PART NO.</u> |
|--------------------------|---------------------------|-------------------------------------|-----------------|
| 1                        | 1                         | ASSY, WIRING HARNESS, GEAR SELECTOR | 4A11000-011     |
| 3                        | 1                         | ASSY, WIRING HARNESS, GEAR ADVISORY | 4A11000-014     |
| 4                        | 1                         | BREAKER, CIRCUIT, KLIXON, 2AMP      | 7277-2-2        |
| 5                        | 1                         | BREAKER, CIRCUIT, KLIXON, 5AMP      | 7277-2-5        |
| 6                        | 8                         | PIN                                 | S1635-1SF       |
| 7                        | 8                         | SOCKET                              | S1636-1         |
| 8                        | 8                         | HOUSING                             | S1637-1         |
| 9                        | 8                         | HOUSING                             | S1637-2         |
| 11                       | 1                         | BREAKER, CIRCUIT, 40AMP             | W-23-X1A1G-40   |
| A1                       | 3                         | RELAY 12V                           | 0-332-209-211   |
| A3                       | 3                         | RELAY SOCKET                        | BR05FW'         |
| A4                       | 7                         | DIODE                               | 1N4004          |
| A5                       | 1                         | FUSE 1 AMP                          | AGC-1           |
| A6                       | 1                         | FUSE HOLDER                         | 3453LF2A        |
| A7                       | 2                         | ASSEMBLY, TIMER RELAY 12V           | 1005042         |
| A9                       | 1                         | DIODE CABLE ADAPTOR                 | 1004949         |
| A10                      | 8                         | SWITCH, 2 WIRE                      | 5801            |
| A12                      | 2                         | ELECTRICAL TERMINAL, 4 CONNECT      | 4-140           |
| A15                      | 1                         | HARNESS W'IRE, FLOATS LT            | 6A10000-004     |
| A16                      | 1                         | HARNESS W'IRE, FLOATS, RT           | 6A10000-005     |

# WIPLINE MODEL 2100 FLOAT PARTS MANUAL



GEAR CONTROL (ROUND)  
FIGURE 21

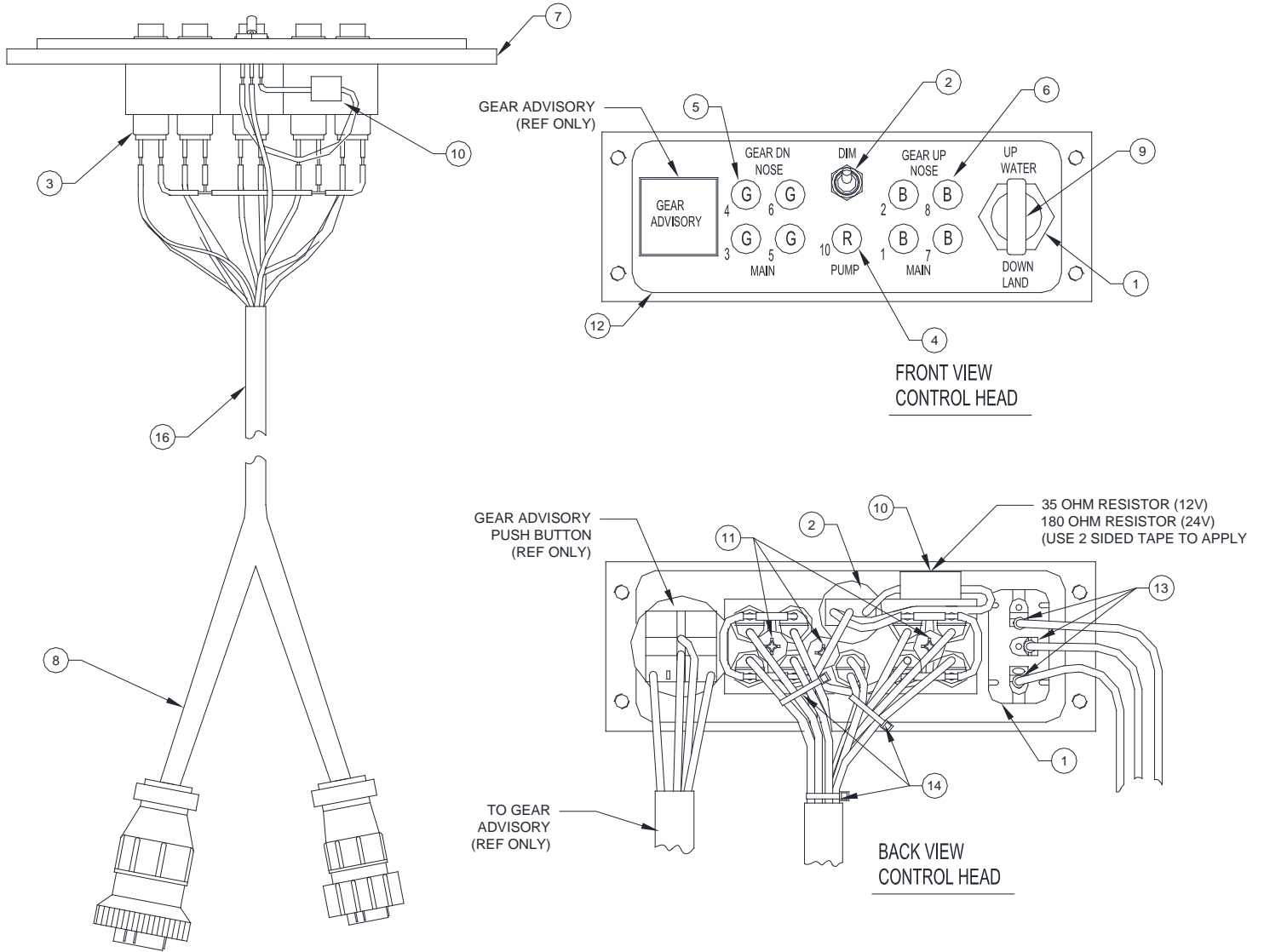
WIPLINE MODEL 2100 FLOAT PARTS MANUAL

GEAR CONTROL (ROUND), FIGURE 21

| <u>REF NO.</u> | <u>NO.</u> | <u>REQ.</u> | <u>PART DESCRIPTION</u>          | <u>PART NO.</u>   |
|----------------|------------|-------------|----------------------------------|-------------------|
|                | 1          |             | GEAR SELECTOR ASSY. ROUND (12V)  | 21A11000-009      |
| 1              | 1          |             | SWITCH                           | 8857K44           |
| 2              | 1          |             | TOGGLE SWITCH, SPDT, ON-ON       | A101SYCB          |
| 3              | 9          |             | SOCKET                           | 515-0012          |
| 4              | 1          |             | INDICATOR LAMP, 14V, RED         | 507-3914-1431-600 |
| 5              | 4          |             | INICATOR LAMP, 14V, GREEN        | 507-3914-1432-600 |
| 6              | 4          |             | INDICATOR LAMP, 14V, BLUE        | 507-3914-1434-600 |
| 7              | 1          |             | BLOCK, GEAR CONTROL              | 21A11179-001      |
| 8              | 1          |             | HARNESS ASSEMBLY, GEAR SELECTOR  | 4A11000-008       |
| 9              | 1          |             | GEAR SWITCH KNOB                 | 21A11259-003      |
| 10             | 1          |             | RESISTOR, 14V, DALE RH5 5W       | RH-5-35           |
| 11             | 3          |             | SCREW, TRUSS HEAD, 6-32          | AN526-632R8       |
| 12             | 1          |             | PLACARD, ROUND2100 GEAR SELECTOR | 10B3-6202         |
| 13             | 3          |             | RING CONNECTOR, #6, 20 AWG, RED  | R-3               |
| 14             | 5          |             | CABLE TIE                        | PLT1M-M           |
| 15             | 16"        |             | SHRINK WRAP, 3/16, WHITE         | HIXR-3/16         |
| 16             | 3"         |             | HEAT SHRINK TUBING               | HS105-1/2-0       |
| 17             | 6"         |             | WIRE, 20AWG, WHITE               | 22759-16-20-9     |



WIPLINE MODEL 2100 FLOAT PARTS MANUAL



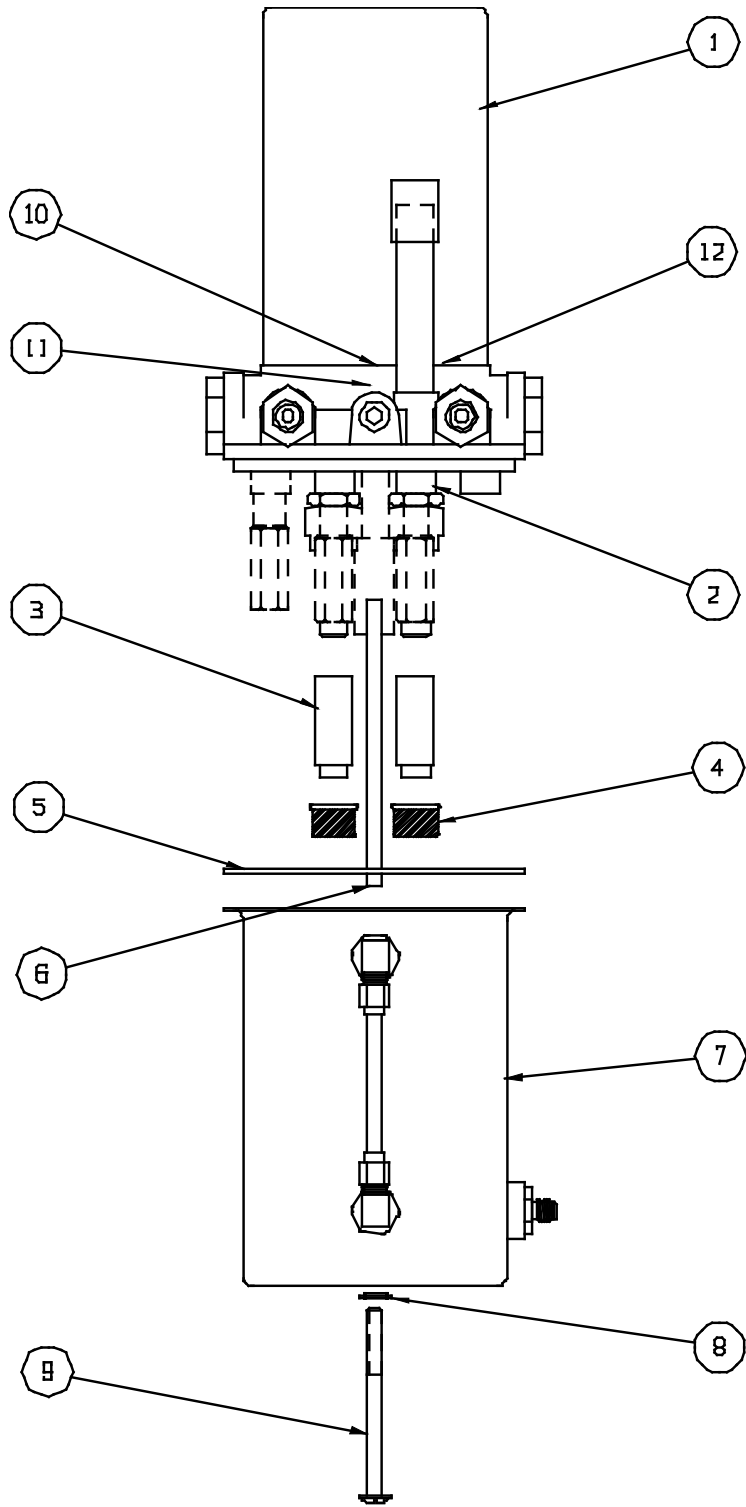
GEAR CONTROL (RECTANGLE)  
FIGURE 22

WIPLINE MODEL 2100 FLOAT PARTS MANUAL

GEAR CONTROL (RECTANGLE), FIGURE 22

| <u>REF NO.</u> | <u>NO.</u> | <u>REQ.</u> | <u>PART DESCRIPTION</u>               | <u>PART NO.</u>   |
|----------------|------------|-------------|---------------------------------------|-------------------|
|                | 1          |             | GEAR SELECTOR ASSY. RECTANGLE (12V)   | 21A11000-010      |
| 1              | 1          |             | SWITCH                                | 8857K44           |
| 2              | 1          |             | TOGGLE SWITCH, SPDT, ON-ON            | A101SYCB          |
| 3              | 9          |             | SOCKET                                | 515-0012          |
| 4              | 1          |             | INDICATOR LAMP, 14V, RED              | 507-3914-1431-600 |
| 5              | 4          |             | INICATOR LAMP, 14V, GREEN             | 507-3914-1432-600 |
| 6              | 4          |             | INDICATOR LAMP, 14V, BLUE             | 507-3914-1434-600 |
| 7              | 1          |             | BLOCK, GEAR CONTROL                   | 21A11179-002      |
| 8              | 1          |             | HARNESS ASSEMBLY, GEAR SELECTOR       | 4A11000-008       |
| 9              | 1          |             | GEAR SWITCH KNOB                      | 21A11259-003      |
| 10             | 1          |             | RESISTOR, 14V, DALE RH5 5W            | RH-5-35           |
| 11             | 3          |             | SCREW, TRUSS HEAD, 6-32               | AN526-632R8       |
| 12             | 1          |             | PLACARD, RECTANGLE 2100 GEAR SELECTOR | 10B3-6277         |
| 13             | 3          |             | RING CONNECTOR, #6, 20 AWG, RED       | R-3               |
| 14             | 3          |             | CABLE TIE                             | PLT1M-M           |
| 15             | 16"        |             | SHRINK WRAP, 3/16, WHITE              | HIXR-3/16         |
| 16             | 3"         |             | HEAT SHRINK TUBING                    | HS105-1/2-0       |
| 17             | 6"         |             | WIRE, 20AWG, WHITE                    | 22759-16-20-9     |

WIPLINE MODEL 2100 FLOAT PARTS MANUAL



HYDRAULIC PUMP  
FIGURE 23

WIPLINE MODEL 2100 FLOAT PARTS MANUAL

HYDRAULIC PUMP, FIGURE 23

| <u>REF NO.</u> | <u>NO.</u> | <u>REQ.</u> | <u>PART DESCRIPTION</u>    | <u>PART NO.</u> |
|----------------|------------|-------------|----------------------------|-----------------|
| 1              | 1          |             | HYDRAULIC PUMP ASS'Y (12V) | 21A09000-215    |
|                |            |             | HYDRAULIC PUMP ASS'Y (24V) | 21A09000-282    |
|                |            |             | MOTOR (12V)                | 640661          |
|                |            |             | MOTOR (24V)                | 641131          |
| 2              | 1          |             | BASIC PUMP                 | 634873          |
| 3              | 2          |             | TUBE EXTENSIONS            | 362136          |
| 4              | 2          |             | FILTER                     | 410521          |
| 5              | 1          |             | SEAL RESERVIOR             | 410578          |
| 6              | 1          |             | RETURN TUBE                | 365047          |
| 7              | 1          |             | RESERVIOR – GAUGE ASS'Y    | 775260          |
| 8              | 1          |             | SEAL THREAD                | 415067          |
| 9              | 1          |             | SCREW – RESERVIOR ATTACH   | 409715          |
| 10             | 1          |             | COUPLING – MOTOR TO PUMP   | 361183          |
| 11             | 1          |             | SEAL – PUMP SHAFT          | 410512          |
| 12             | 1          |             | “O” RING MOTOR TO BASE     | 405673          |