

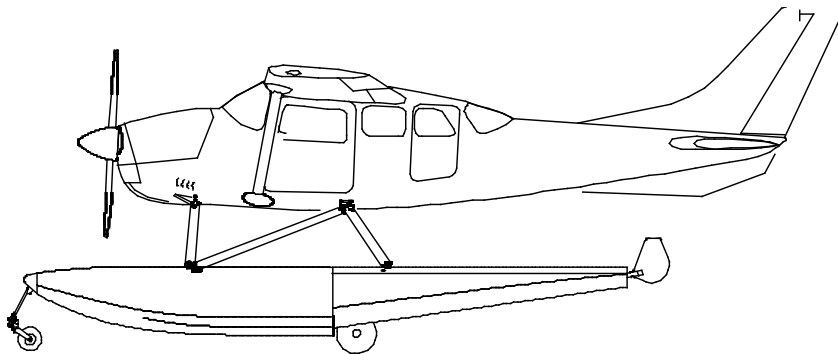


WIPLINE FLOATS • SKIS • MODIFICATIONS • AIRCRAFT SALES
AVIONICS • INTERIOR • MAINTENANCE • PAINT REFINISHING

WIPLINE FLOATS

MODEL 3730 / 3900

PARTS MANUAL



WIPLINE MODEL 3730-3900 FLOATS PARTS MANUAL

THIS PAGE INTENTIONALLY LEFT BLANK

WIPLINE MODEL 3730-3900 FLOATS PARTS MANUAL

TABLE OF CONTENTS

<u>SECTION</u>	<u>PAGE</u>
LOG OF REVISIONS	4
FLOAT PART SALES DEPT. OPERATIONS	5
PARTS ORDERING	5
DAMAGED GOODS	5
RETURNED PARTS	5
ORDER SHORTAGES	6
CREDIT POLICY	6
LIST OF ABBREVIATIONS	6
NEW CUSTOMER INFORMATION	7
ASSEMBLY FLOAT HULL – FIGURE 1	9
MISCELLANEOUS HULL PARTS – FIGURE 2	16
HULL EXTRUSIONS – FIGURE 3	19
INSTALLATION STRUTS 206 – FIGURE 4	21
INSTALLATION STRUTS 185 – FIGURE 5	25
INSTALLATION SPREADER BAR – FIGURE 6	29
ASSEMBLY - WHEEL AND BRAKES – FIGURE 7	32
ASSEMBLY - MAIN LANDING GEAR – FIGURE 8	35
ASSEMBLY - MAIN GEAR OLEO – FIGURE 9	37
ASSEMBLY - RETRACTOR MAIN GEAR – FIGURE 10	40
ASSEMBLY - CYLINDER MAIN GEAR RETRACTOR – FIGURE 11	43
ASSEMBLY - RETRACTOR BRACE AND SWITCH– FIGURE 12	45
ASSEMBLY - NOSE WHEEL, FIGURE 13	47
ASSEMBLY - NOSE GEAR WHEEL (PARKER) – FIGURE 14	49
ASSEMBLY - NOSE GEAR RETRACTOR– FIGURE 15	52
WATER RUDDER BLADE INSTALLATION – FIGURE 16	55
ASSEMBLY - WATER RUDDER HANDLE – FIGURE 17	58
ASSEMBLY - PULLEY BRACKETS – FUSELAGE BELLY – FIGURE 18	62
CABLE SYSTEM 206 – FIGURE 20	64
CABLE SYSTEM 185 – FIGURE 21	67
HYDRAULIC SYSTEM 206 – FIGURE 22	70
HYDRAULIC PUMP INSTALLATION – FIGURE 23	76
INSTALLATION HYDRAULIC PUMP 185 – FIGURE 25	85
HYDRAULIC PUMP ASSEMBLY – FIGURE 26	88
ASSEMBLY CONTROL VALVE – FIGURE 27	91
SCHEMATIC LANDING GEAR ELECTRICAL SYSTEM – FIGURE 28	92
SCHEMATIC LANDING GEAR ELECTRICAL SYSTEM – FIGURE 29	93
PLACARDS AND DECALS – FIGURE 30	95

NOTE:

Any information not found in this manual for strut package parts and other aircraft installation items, refer to the installation drawing package provided with the STC at the time of float installation. Additional drawing copies are available for purchase through the Wipaire Customer Service department.

WIPLINE MODEL 3730-3900 FLOATS PARTS MANUAL

FLOAT PART SALES DEPT. OPERATIONS

Hours: 7:00 AM – 6:00 PM, Monday through Friday
Central U.S. Time

Phone: 651-306-0459

Fax: 651-306-0666

Email: customerservice@wipaire.com

Website: www.wipaire.com

Shipping Schedule:

In-stock orders received before 3:00 PM CST ship the same day. Orders received after this time may be assessed an AOG fee for special priority handling.

As we are primarily a manufacturer, our stocks can be rapidly depleted by production requirements. Therefore, prices and availability are subject to change at any time. It is our intent to provide courteous and prompt service of your needs. Please let us know of any problem or concerns so that changes in these procedures can be a benefit to all.

PARTS ORDERING

Purchase orders should include

1. P.O. Number
2. Name of person placing order
3. Invoicing information:
 - I. Customer name – company or individual
 - i. Address
 - ii. Phone and fax number
4. Shipping information:
 - I. Address (if different from invoice address)
 - II. Method of shipment/preferred carrier
5. Aircraft model, float model and serial numbers
6. Wipaire part number; name; type, e.g. left or right; quantity
7. Payment method: VISA, MasterCard, COD (U.S. customers only). Pre-payment by check or wire transfer, open account (see credit policy section).

DAMAGED GOODS

Inspect all parts upon receipt. Damages to parts in transit must be filed as a claim against the carrier.

RETURNED PARTS

Written explanation of reason for return must accompany parts, including invoice number of original shipment. Shipping charges on returned parts must be prepaid or the shipment will be refused.

WIPLINE MODEL 3730-3900 FLOAT PARTS MANUAL

ORDER SHORTAGES

Check shipment against delivery slip immediately. All claims for any shortages should be made within three (3) days after order receipt.

CREDIT POLICY

Parts will be shipped on open account, net 30 days, to Wipaire-approved credit customers only. A balance due over 60 days will result in no shipments. Wipaire, Inc reserves the right to send any order C.O.D.

LIST OF ABBREVIATIONS

All references in this manual to LEFT and RIG HT are from the perspective of the pilot's seat with the floats fully installed and ready for floatplane operation. The following is a list of abbreviations that may appear in the description nomenclature fields of this manual:

AB	Afterbody	Inbd.	Inboard
Amphib.	Amphibious	Lg.	Large.
AR	As Required	Lt.	Left
Assy.	Assembly	Lwr.	Lower
Brkt.	Bracket	Opt.	Optional
Btm.	Bottom	Otbd.	Outboard
Bulk.	Bulkhead	Reinf.	Reinforcement
Ctr.	Center	Rr.	Rear
Cyl.	Cylinder	Rt.	Right
Ft.	Front	Sm.	Small
Ftg.	Fitting	SN	Serial Number
Fus.	Fuselage	Spr.	Spreader
Fwd.	Forward	Upr.	Upper
Horiz.	Horizontal	Vert.	Vertical
Hyd.	Hydraulic	W.W.	Wheel Well
		Alum.	Aluminum

WIPLINE MODEL 3730-3900 FLOATS PARTS MANUAL



NEW CUSTOMER INFORMATION

Customer Name	
Billing Address	
Shipping address	
Phone Number	Fax Number
Purchasing Contact	Phone Number
E-Mail	Fax Number
Accounts Payable Contact	Phone Number
E-Mail	Fax Number
Type(s) of Floats and Skis owned or Maintained	
Models(s) of Floats and Skis owned or Maintained	
FedEx and/or UPS account number (if applicable)	

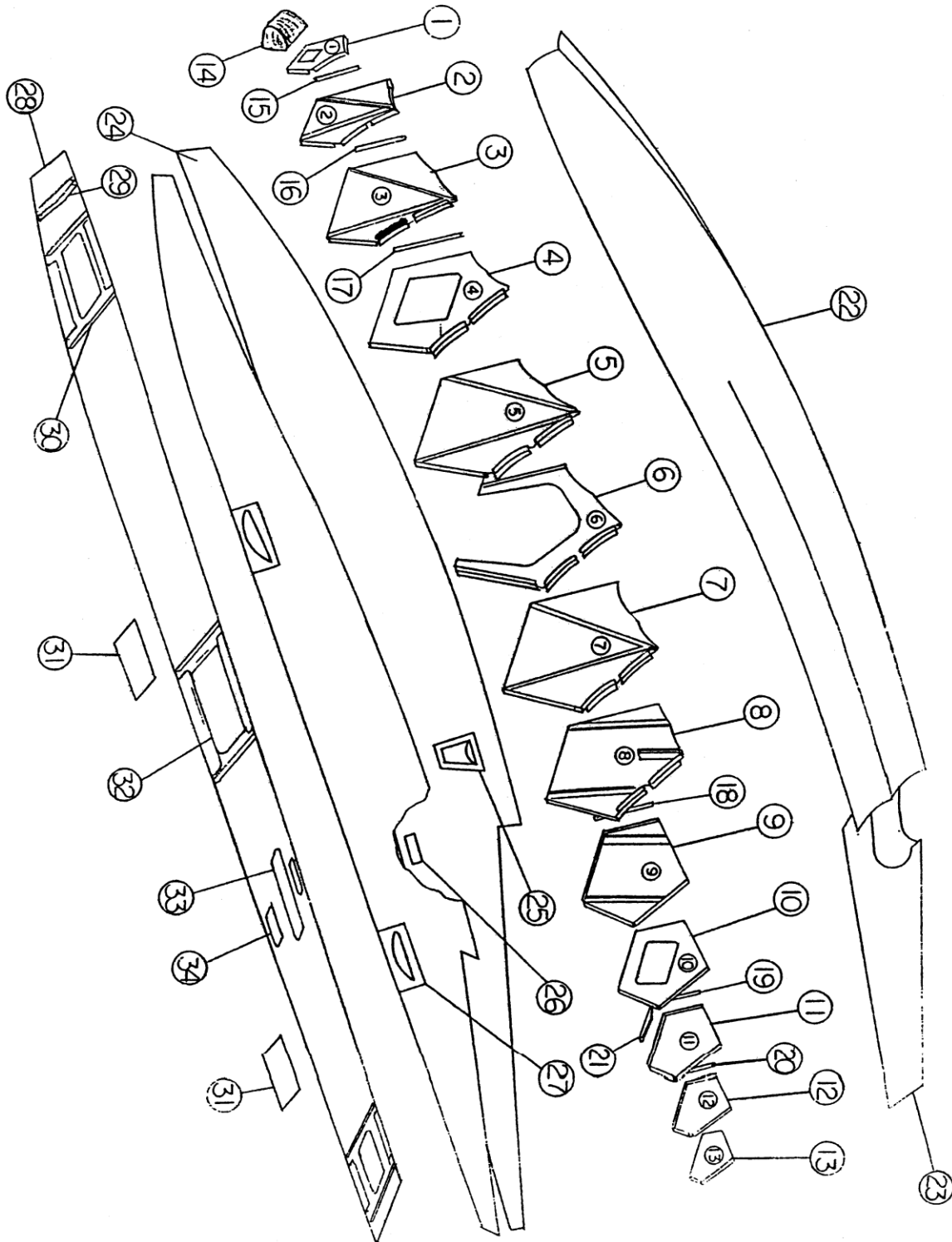
Please return to Wipaire Customer Service:

Fax 651-306-0666

Phone 651-306-0459

CustomerService@wipaire.com

WIPLINE MODEL 3730-3900 FLOAT PARTS MANUAL



ASSEMBLY FLOAT HULL – FIGURE 1

WIPLINE MODEL 3730-3900 FLOAT PARTS MANUAL

ASSEMBLY FLOAT HULL – FIGURE 1

<u>REF. NO.</u>	<u>NO. REQ.</u>	<u>PART DESCRIPTION</u>	<u>PART NO.</u>
	1	ASSEMBLY-LEFT FLOAT HULL-AMPHIB	3A01000-001
	1	ASSEMBLY-RIGHT FLOAT HULL-AMPHIB	3A01000-002
	1	ASSEMBLY-LEFT FLOAT HULL-SEAPLANE	3S01000-117
	1	ASSEMBLY-RIGHT FLOAT HULL-SEAPLANE	3S01000-116
1	1	BULKHEAD-STATION #1 AMPHIB NOSE BULK	3A01156-001
	1	BULKHEAD-STATION #1 SEAPLANE	3S01156-002
	1	STRIP-FILLER TOP	3A01156-004
	2	STRIP-FILLER BOTTOM	3A01156-003
	2	STRIP-FILLER SIDE	3A01156-005
2	1	BULKHEAD-STATION #2 BODY # BULKHEAD	3A01151-063
	1	ANGLE-KEEL ATTACH RIGHT	3A01340-002
	1	ANGLE-KEEL ATTACH LEFT	3A01340-001
	2	ANGLE-SISTER KEEL ATTACH	6A01359-001
	1	DOUBLER-RETRACTOR	3A01005-005
	1	FILLER-STRIP-TOP	3A01002-002
3	1	BULKHEAD STATION #3 BODY # BULKHEAD	3A01151-064
	1	FLANGE "A" BOTTOM	3A01151-011
	1	FLANGE "B" BOTTOM	3A01151-013
	1	FLANGE "C" BOTTOM	3A01151-012
	1	FLANGE "D" BOTTOM	3A01151-014
		NOTE: ABOVE FLANGES SOLD IN SETS OF "4" ONLY	
	1	ANGLE-KEEL-ATTACH-RIGHT	3A01340-004
	1	ANGLE-KEEL ATTACH LEFT	3A01340-003
	1	ANGLE-SISTER KEEL ATTACH RIGHT	6A01359-002
	1	ANGLE-SISTER KEEL ATTACH LEFT	6A01359-003
4	1	BULKHEAD-STATION #4 BODY # 5.6 BULKHEAD	3A01151-065
	1	FLANGE "A" BOTTOM	3A01151-015
	1	FLANGE "B" BOTTOM	3A01151-017
	1	FLANGE "C" BOTTOM	3A01151-016
	1	FLANGE "D" BOTTOM	3A01151-018
		NOTE: ABOVE FLANGES SOLD IN SETS OF "4" ONLY	
	1	ANGLE-VERTICAL SUPPORT-LEFT	3A01339-001
	1	ANGLE-VERTICAL SUPPORT-RIGHT	3A01339-002
	1	ANGLE-HORIZONTAL SUPPORT	3A01339-003
	1	ANGLE-KEEL ATTACH-LEFT	3A01340-009
	1	ANGLE-KEEL ATTACH-RIGHT	3A01340-010
	1	ANGLE-SISTER KEEL ATTACH-LEFT	3A01339-005
	1	ANGLE-SISTER KEEL ATTACH-RIGHT	3A01339-004

WIPLINE MODEL 3730-3900 FLOAT PARTS MANUAL

ASSEMBLY FLOAT HULL – FIGURE 1

REF. NO.	NO. REQ.	<u>PART DESCRIPTION</u>	<u>PART NO.</u>	
5	1	BULKHEAD #5 BODY #6.5 BULKHEAD	3A01151-066	
	1	FLANGE "A" BOTTOM	3A01151-019	
	1	FLANGE "B" BOTTOM	3A01151-021	
	1	FLANGE "C" BOTTOM	3A01151-020	
	1	FLANGE "D" BOTTOM	3A01151-022	
		NOTE: ABOVE FLANGES SOLD IN SETS OF "4" ONLY		
	1	ANGLE-VERTICAL SUPPORT LEFT	3A01339-007	
	1	ANGLE-VERTICAL SUPPORT RIGHT	3A01339-006	
	1	ANGLE-KEEL ATTACH LEFT	3A01340-005	
	1	ANGLE-KEEL ATTACH RIGHT	3A01340-006	
	1	ANGLE-SISTER KEEL ATTACH LEFT	3A01339-009	
	1	ANGLE-SISTER KEEL ATTACH RIGHT	3A01339-008	
	6	1	ASSEMBLY #6 BULKHEAD #7.5 OR FALSE BULKHEAD	3A01151-073
		1	BULKHEAD SIDE LEFT	3A01005-003
		1	BULKHEAD SIDE RIGHT	3A01005-002
2		BULKHEAD BOTTOM FLANGE	3A01002-006	
1		ANGLE-KEEL ATTACH LEFT	3A01340-011	
1		ANGLE-KEEL ATTACH RIGHT	3A01340-012	
2		ANGLE-SISTER KEEL ATTACH	6A01359-004	
7	1	BULKHEAD #7 BODY # 8.5 BULKHEAD	3A01151-067	
	1	ANGLE-KEEL SUPPORT LEFT	3A01340-007	
	1	ANGLE-KEEL SUPPORT RIGHT	3A01340-008	
	1	FLANGE "A" BOTTOM	3A01151-023	
	1	FLANGE "B" BOTTOM	3A01151-025	
	1	FLANGE "C" BOTTOM	3A01151-024	
	1	FLANGE "D" BOTTOM	3A01151-026	
		NOTE: ABOVE FLANGES SOLD IN SETS OF "4" ONLY		
	1	ANGLE-PUMP ATTACH UPPER	3A01339-010	
	1	ANGLE-PUMP ATTACH LOWER	3A01357-027	
	1	ANGLE-SISTER KEEL ATTACH LEFT	6A01359-003	
	1	ANGLE-SISTER KEEL ATTACH RIGHT	6A01359-002	

WIPLINE MODEL 3730-3900 FLOAT PARTS MANUAL

ASSEMBLY FLOAT HULL – FIGURE 1

<u>REF. NO.</u>	<u>NO. REQ.</u>	<u>PART DESCRIPTION</u>	<u>PART NO.</u>	
8	1	BULKHEAD #8 BODY (STEP)	3A01151-068	
	1	DOUBLER-BOTTOM FLANGE (AMPHIBIAN)	3A01151-071	
	1	ANGLE-VERTICAL SUPPORT LEFT	3A01357-029	
	1	ANGLE-VERTICAL SUPPORT RIGHT	3A01357-028	
	1	ANGLE-MAIN KEEL ATTACH LEFT	3A01339-011	
	1	ANGLE-MAIN KEEL ATTACH RIGHT	3A01339-012	
	1	ANGLE-SISTER KEEL ATTACH LEFT	3A01339-013	
	1	ANGLE-SISTER KEEL ATTACH RIGHT	3A01339-014	
	1	ANGLE-HORIZONTAL SUPPORT (SEAPLANE)	3S01339-015	
	1	DOUBLER-BOTTOM FLANGE (SEAPLANE)	3S01002-012	
	1	DOUBLER-BRAKELINE FITTING (AMPHIBIAN)	3A01008-001	
	9	1	BULKHEAD #9 BODY (AMPHIBIAN) #11.5 BULKHEAD	3A01002-013
		1	BULKHEAD #9 BODY (SEAPLANE)	3S01002-016
1		ANGLE-VERTICAL SUPPORT LEFT	3A01339-017	
1		ANGLE-VERTICAL SUPPORT RIGHT	3A01339-016	
2		ANGLE-SISTER KEEL ATTACH	3A01339-018	
10	1	BULKHEAD #10 BODY # 12.5 BULKHEAD	3A01002-014	
	1	ANGLE-VERTICAL SUPPORT LEFT	3A01339-019	
	1	ANGLE-VERTICAL SUPPORT RIGHT	3A01339-020	
	2	ANGLE-SISTER KEEL ATTACH	3A01339-018	
11	1	BULKHEAD #11 BODY #15 BULKHEAD	3A01002-015	
	2	ANGLE-SISTER KEEL ATTACH	6A01359-004	
12	1	BULKHEAD #12 BODY #17 BULKHEAD	3A01002-017	
	2	ANGLE-SISTER KEEL ATTACH	6A01359-004	
13	1	BULKHEAD #13 BODY #19 BULKHEAD	3A01002-018	
	2	ANGLE-SISTER KEEL ATTACH	6A01359-004	
	1	CASTING-WATER RUDDER	3A01437-001	
14	1	NOSE BUMPER (AMPHIBIAN)	3A01727-001	
	2	ANGLE-BUMPER ATTACH	3A01359-005	
	8	SCREW-ANGLE TO BULKHEAD-ATTACH	AN526-832R8	
	4	SCREW-ANGLE TO BUMPER ATTACH	AN526-1032-14	
	1	NOSE BUMPER (SEAPLANE)	3S01635-002	
	6	NUT-BUMPER-ATTACH	AN365-1032	

WIPLINE MODEL 3730-3900 FLOAT PARTS MANUAL

ASSEMBLY FLOAT HULL – FIGURE 1

REF. NO.	NO. REQ.	PART DESCRIPTION	PART NO.
15	2	STIFFENER-SIDE SKIN	3A01151-001
16	2	STIFFENER-SIDE SKIN	3A01151-002
17	2	STIFFENER-SIDE SKIN	3A01151-003
18	2	STIFFENER-SIDE SKIN	3A01151-004
19	2	STIFFENER-SIDE SKIN-FORWARD	3A01151-005
	2	STIFFENER-SIDE SKIN-AFT	3A01151-006
20	2	STIFFENER-SIDE SKIN	3A01151-007
21	1	STIFFENER-TOP SKIN	3A01151-009
22	1	SKIN-BOTTOM LEFT	3A01158-043
	1	SKIN-BOTTOM RIGHT	3A01158-044
23	1	SKIN-AFTERBODY (AMPHIBIAN)	3A01005-015
		SKIN-AFTERBODY (SEAPLANE)	3S01005-014
24	1	SKIN-SIDE INBOARD RIGHT	3A01005-008
	1	SKIN-SIDE INBOARD LEFT	3A01005-009
	1	SKIN-SIDE OUTBOARD RIGHT	3A01005-010
	1	SKIN-SIDE OUTBOARD LEFT (AMPHIBIAN)	3A01005-011
	1	SKIN-SIDE OUTBOARD RIGHT (SEAPLANE)	3S01005-012
	1	SKIN-SIDE OUTBOARD LEFT (SEAPLANE)	3S01005-013
25	1	ASSEMBLY-STEP-BOARDING (AMPHIBIAN)	3A01000-005
26	1	COVER SPREADER BAR INSPECTION	3A01002-022
	1	REINFORCEMENT-SPREADER BAR COVER	3A01156-007
	18	SCREW-COVER ATTACH	AN526-632R4
27	2	PLATE-REINFORCEMENT SPREADER BAR	3A01002-023
28	1	SKIN-TOP-RIGHT (AMPHIBIAN)	3A01005-004
	1	SKIN-TOP-LEFT (AMPHIBIAN)	3A01005-005
	1	SKIN-TOP-RIGHT (SEAPLANE)	3S01005-006
	1	SKIN-TOP-LEFT (SEAPLANE)	3S01005-007
29	1	STIFFENER-TOP SKIN	3A01151-008

WIPLINE MODEL 3730-3900 FLOAT PARTS MANUAL

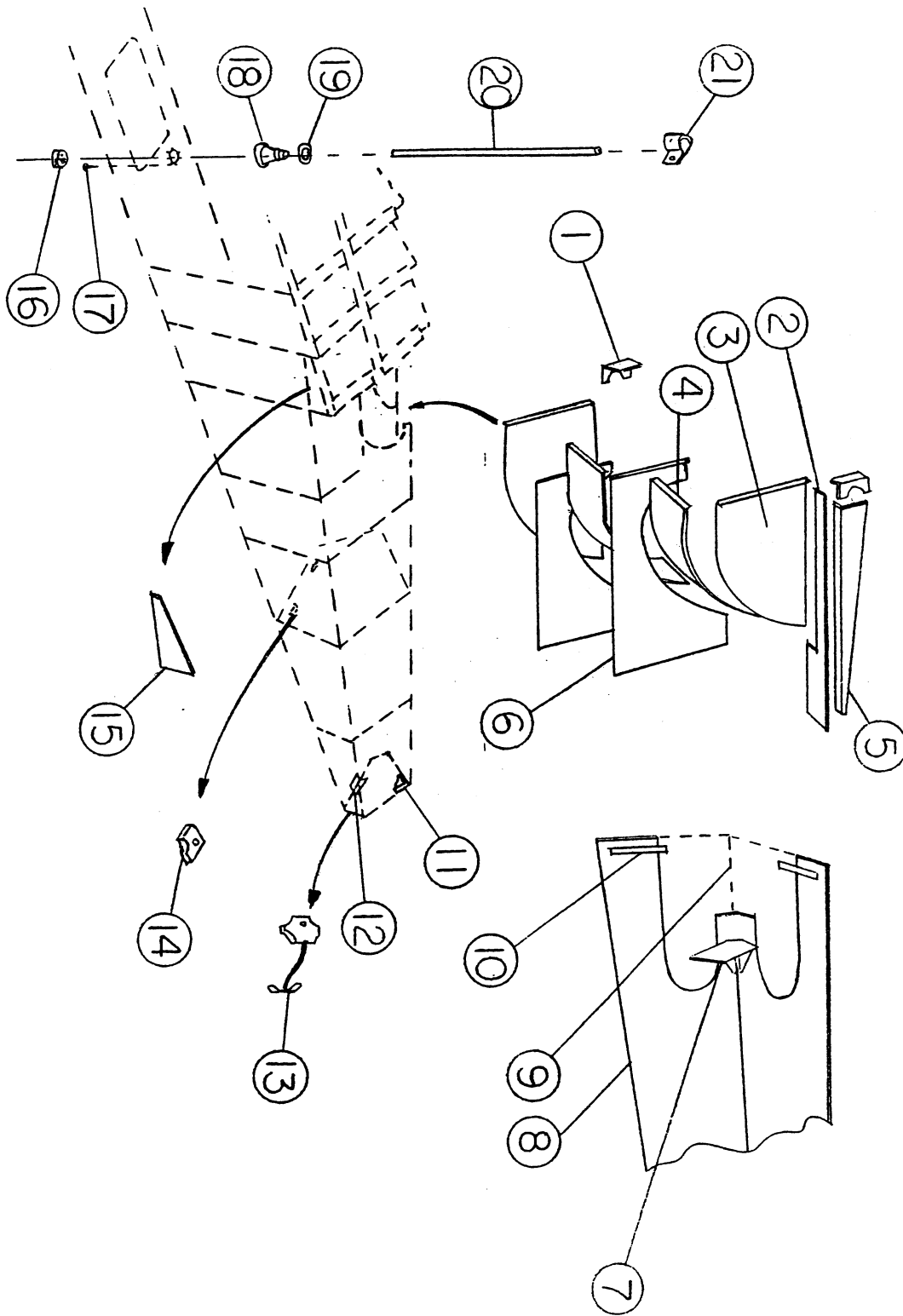
ASSEMBLY FLOAT HULL – FIGURE 1

<u>REF. NO.</u>	<u>NO. REQ.</u>	<u>PART DESCRIPTION</u>	<u>PART NO.</u>
30	4	COVER REINFORCEMENT FOR 8"X10" COVER NOTE: TRIM & DRILL FROM FLOAT	3A01000-269
	6	PLACENUT-TINNERMAN	9A3-671
	4	INSPECTION COVER ASSEMBLY NOTE: SPECIFY IF NON-SKID TOP REQ'D	3A01000-021
12		SCREW COVER	8 X 3/4
	7	COVER SEAL (FITS SM. AND LG.)	3A01567-008
	3	COVER REINFORCEMENT FOR 10"X12" COVER NOTE: TRIM & DRILL FROM FLOAT	3A01000-270
	4	DOUBLERS-PICK UP RIVETS	3A01008-004
	8	PLACENUT-TINNERMAN	9A3-671
	3	INSPECTION COVER ASSEMBLY NOTE: SPECIFY IF NON-SKID TOP REQ'D	3A01000-022
	16	SCREW COVER	8 X 3/4
31	2	DOUBLER-TOP SKIN STRUT ATTACH	3A01008-003
32	1	COVER-REINFORCEMENT-BAGGAGE NOTE: TRIM & DRILL FROM FLOAT	3A01151-045
	4	DOUBLER-PICK UP RIVETS	3A01008-004
	1	WEATHER SEAL BAGGAGE DOOR	1/4"RD
	1	GUSSET-BAGGAGE DOOR LOCK LEFT	3A01002-007
	1	GUSSET-BAGGAGE DOOR LOCK RIGHT	3A01002-008
	1	COVER-ASSEMBLY-BAGGAGE NOTE: SPECIFY IF NON-SKID REQ'D	3A01000-006
	4	LOCK-HOLDER	3A01206-001
	4	LOCK-KNOB	3A01273-002
	4	LOCK-SPRING	3A01525-003
	4	LOCK-PIN-STEEL	3A01702-004
33	1	COVER RETRACT-MAIN GEAR TOP SKIN NOTE: SPECIFY IF NON SKID REQ'D	3A01008-002
	8	SCREW-ATTACH	AN526-1032R6
34	2	COVER-WHEEL WELL-TOP SKIN NOTE: SPECIFY IF NON-SKID REQ'D	3A01002-021
	2	COVER-REINFORCEMENT	3A01156-006
	18	SCREW-COVER ATTACH	AN526-632R4
35	1	PADDLE BRACKET FORWARD	3A01158-093

WIPLINE MODEL 3730-3900 FLOAT PARTS MANUAL

ASSEMBLY FLOAT HULL – FIGURE 1

<u>REF. NO.</u>	<u>NO. REQ.</u>	<u>PART DESCRIPTION</u>	<u>PART NO.</u>
36	1	PADDLE CLIP	3A01503-001
37	1	PADDLE STOP - RIGHT	6A01156-058
38	1	PADDLE STOP - LEFT	6A01156-059
39	2	TIE DOWN HANDLE	3A01058-001
	4	BOLT	AN3-11A
	8	WASHER	NAS1149DO363J
	4	NUT	MS21044N3



MISCELLANEOUS HULL PARTS – FIGURE 2

WIPLINE MODEL 3730-3900 FLOAT PARTS MANUAL

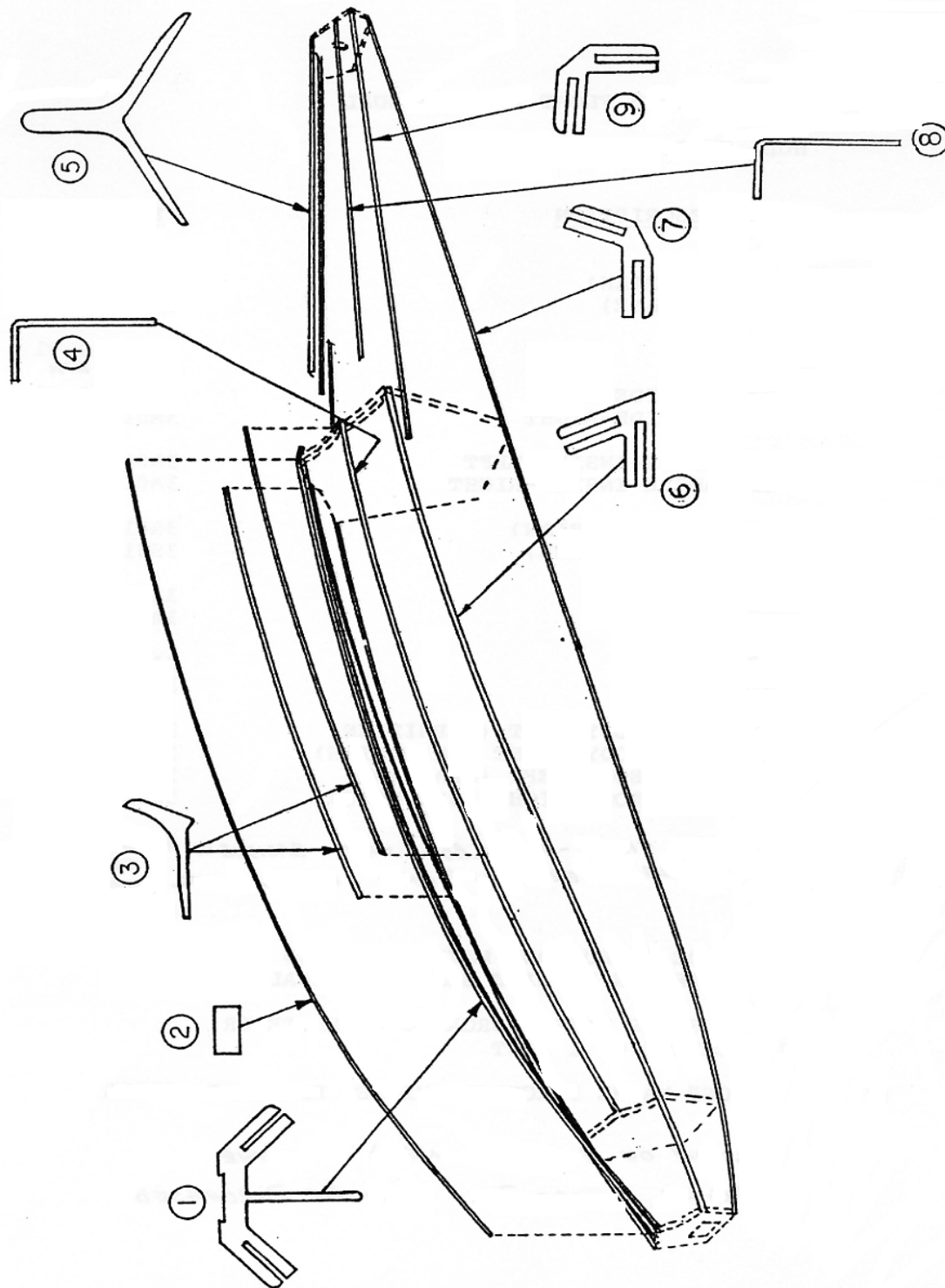
MISCELLANEOUS HULL PARTS – FIGURE 2

REF. NO.	NO. REQ.	<u>PART DESCRIPTION</u>	<u>PART NO.</u>
1	1	ANGLE-TRUNION ATTACH LEFT	3A01357-031
	1	ANGLE-TRUNION ATTACH RIGHT	3A01357-030
2	2	DOUBLER-CARRYTHRU STRAP	3A01005-019
3	1	SKIN-WHEELWELL SIDE RIGHT	3A01005-018
	1	SKIN-WHEELWELL SIDE LEFT	3A01005-017
4	2	SKIN-WHEELWELL TOP	3A01005-016
5	1	ANGLE-CARRYTHRU STRAP-LEFT	3A01158-001
	1	ANGLE-CARRYTHRU STRAP-RIGHT	3A01003-002
6	1	BULKHEAD-WHEELWELL-LEFT	3A01158-001
	1	BULKHEAD-WHEELWELL-RIGHT	3A01158-002
7	1	DOUBLER-INSIDE AFTERBODY SKIN	3A01003-004
8	1	AFTERBODY SKIN (AMPHIBIAN)	3A01158-043
9	1	AFTERBODY SKIN (SEAPLANE)	3S01158-044
10	2	STRIP REINFORCEMENT	3A01002-025
11	1	STIFFENER-BOTTOM SKIN (#13 BULKHEAD)	3A01002-020
12	1	STIFFENER-TOP SKIN (#13 BULKHEAD)	3A01002-019
13	2	ASSEMBLY-PULLEY BRACKET	3A01000-004
14	2	PULLEY BRACKET (#11 BULKHEAD)	3A01151-010
15	2	DOUBLER-SIDE SKIN AT TOP	3A01002-024
16	9	STOPPER ASSEMBLY-PUMPER CUP	3A01000-023
17	8	RIVET (SOFT)	AN470-AD4-5

WIPLINE MODEL 3730-3900 FLOAT PARTS MANUAL

MISCELLANEOUS HULL PARTS – FIGURE 2

REF. NO.	NO. REQ.	<u>PART DESCRIPTION</u>	<u>PART NO.</u>
18	9	CUP-PUMP OUT	3A01650-002
	9	OPTIONAL – SPUN ALUMINUM	4A01749-001
19	9	RING-REINFORCEMENT PUMP OUT CUP	3A01158-005
20	1	PUMPER TUBE (#1 NOSE)	3A01618-001
	1	PUMPER TUBE (#2)	3A01618-002
	1	PUMPER TUBE (#3)	3A01618-003
	1	PUMPER TUBE (#4)	3A01618-004
	1	PUMPER TUBE (#5)	3A01618-005
	1	PUMPER TUBE (#6) WHEELWELL RIGHT	3A01618-006
	1	PUMPER TUBE (#7) WHEELWELL LEFT	3A01618-007
	1	PUMPER TUBE (#8)	3A01618-008
	1	PUMPER TUBE (#9)	3A01618-009
21	9	CLAMP PUMP OUT TUBE	3A01158-003
22	9	PLASTIC SNAP CLIP	SNP-16



HULL EXTRUSIONS – FIGURE 3

WIPLINE MODEL 3730-3900 FLOAT PARTS MANUAL

HULL EXTRUSIONS – FIGURE 3

<u>REF. NO.</u>	<u>NO. REQ.</u>	<u>PART DESCRIPTION</u>	<u>PART NO.</u>
1	1	KEEL MAIN (AMPHIBIAN)	3A01354-001
	1	KEEL MAIN (SEAPLANE)	3A01354-002
2	1	WEAR STRIP-KEEL	3A01200-001
3	1	SISTER KEEL-OUTSIDE-LEFT	3A01342-001
	1	SISTER KEEL-OUTSIDE-RIGHT	3A01342-002
4	1	SISTER KEEL ANGLE-INSIDE-LEFT	3A01339-021
	1	SISTER KEEL ANGLE-INSIDE-RIGHT	3A01339-022
5	1	KEEL-AFTERBODY (AMPHIBIAN)	3A01347-001
	1	KEEL-AFTERBODY (SEAPLANE)	3S01347-002
6	1	CHINE-FORWARD-LEFT	3A01351-001
	1	CHINE-FORWARD-RIGHT	3A01351-002
7	1	GUNWALL-LEFT	3A01366-001
	1	GUNWALL-RIGHT	3A01366-002
8	1	SISTER KEEL AFTERBODY-LEFT (AMPHIBIAN)	3A01339-023
	1	SISTER KEEL AFTERBODY-RIGHT (AMPHIBIAN)	3A01339-024
	1	SISTER KEEL AFTERBODY-LEFT (SEAPLANE)	3A01339-025
	1	SISTER KEEL AFTERBODY-RIGHT (SEAPLANE)	3A01339-026
9	1	CHINE AFTER BODY LT.	3A01363-001
	1	CHINE AFTER BODY RT.	3A01363-002

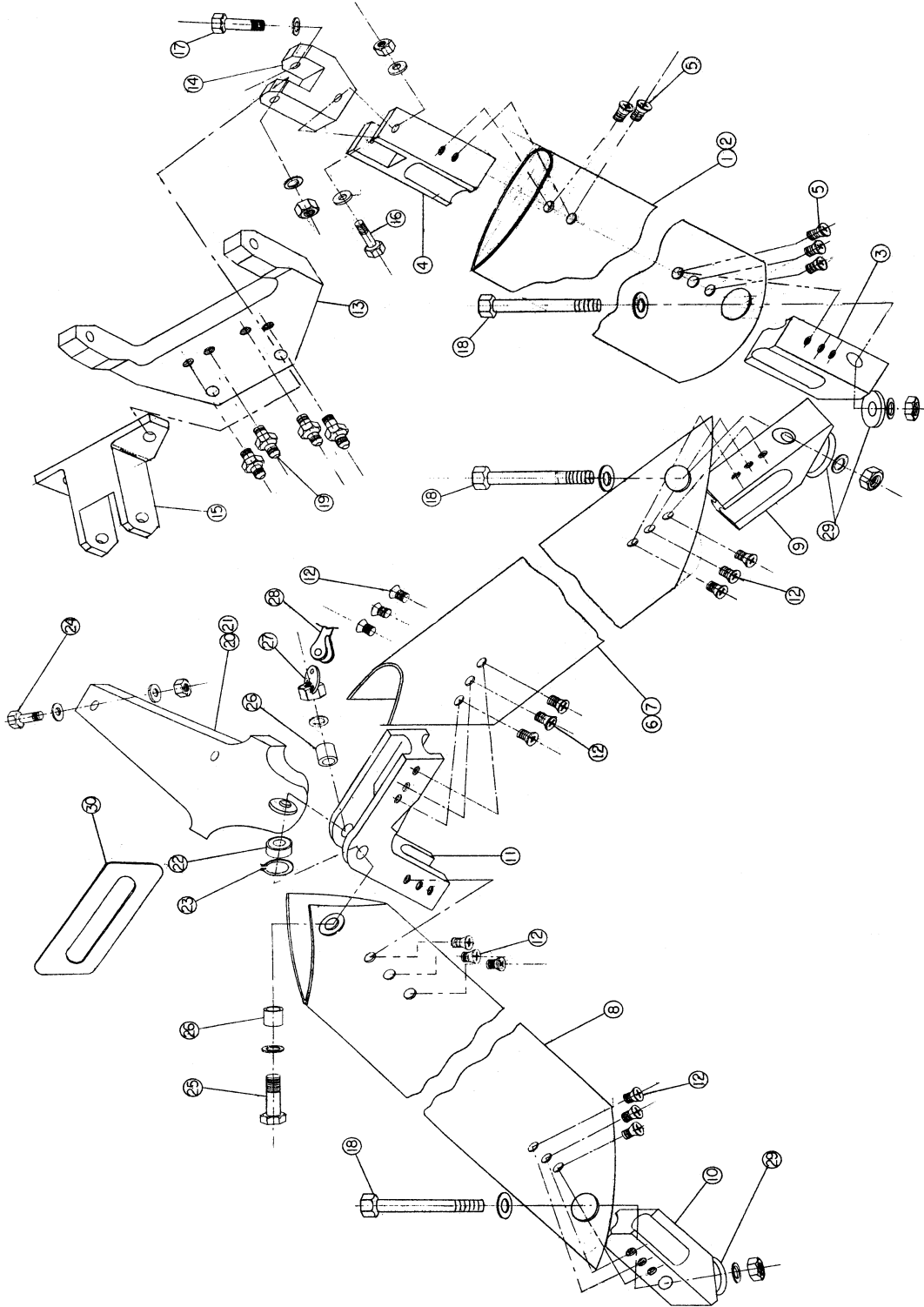
(1) ALL OUTSIDE EXTRUSIONS MAYBE REPAIRED BY SPLICING AS DESCRIBED IN WIPLINE SERVICE MANUAL

(2) ALL EXTRUSIONS MAY BE PURCHASED COMPLETE OR IN INCREMENTS OF 1 FOOT

(3) EXTRUSIONS MAY BE PURCHASED MILLED READY FOR INSTL.

(4) IF THE SECTION NEEDED IS ON CURVE OF EXTRUSION, ENTIRE EXTRUSION MUST BE PURCHASED.

WIPLINE MODEL 3730-3900 FLOAT PARTS MANUAL



INSTALLATION STRUTS 206 – FIGURE 4

WIPLINE MODEL 3730-3900 FLOAT PARTS MANUAL

INSTALLATION STRUTS 206 – FIGURE 4

REF. NO.	NO. REQ.	<u>PART DESCRIPTION</u>	<u>PART NO.</u>
1	1	ASSEMBLY-FRONT STRUT-LEFT	3A02000-011
	1	ASSEMBLY-FRONT STRUT-RIGHT	3A02000-012
2	1	STRUT-FRONT-LEFT	3A02356-001
	1	STRUT-FRONT-RIGHT	3A02356-002
3	1	FITTING-FRONT STRUT LOWER-LEFT	3A02045-005
	1	FITTING-FRONT STRUT LOWER-RIGHT	3A02045-006
4	2	FITTING-FRONT STRUT UPPER	3A02045-007
5	10	SCREW	MS24694S145
6	1	ASSEMBLY REAR AND DIAGONAL STRUT-LEFT	3A02000-009
	1	ASSEMBLY REAR AND DIAGONAL STRUT-RIGHT	3A02000-010
7	1	STRUT-DIAGONAL-LEFT	3A02356-003
	1	STRUT-DIAGONAL-RIGHT	3A02356-004
8	1	STRUT-REAR-LEFT	3A02356-005
	1	STRUT-REAR-RIGHT	3A02356-006
9	1	FITTING DIAGONAL-LOWER LEFT	3A02045-003
	1	FITTING DIAGONAL-LOWER RIGHT	3A02045-004
10	1	FITTING-REAR STRUT LOWER-LEFT	3A02045-001
	1	FITTING-REAR STRUT LOWER-RIGHT	3A02045-002
11	2	FITTING-REAR AND DIAGONAL STRUT UPPER	3A02064-001
12	24	SCREW	MS24694S145
13	1	FITTING-FRONT STRUT JOINING	3A02057-001
14	2	LINK-FRONT STRUT UPPER	3A02055-001
15	1	LINK-FRONT STRUT JOINING	3A02063-001

WIPLINE MODEL 3730-3900 FLOAT PARTS MANUAL

INSTALLATION STRUTS 206 – FIGURE 4

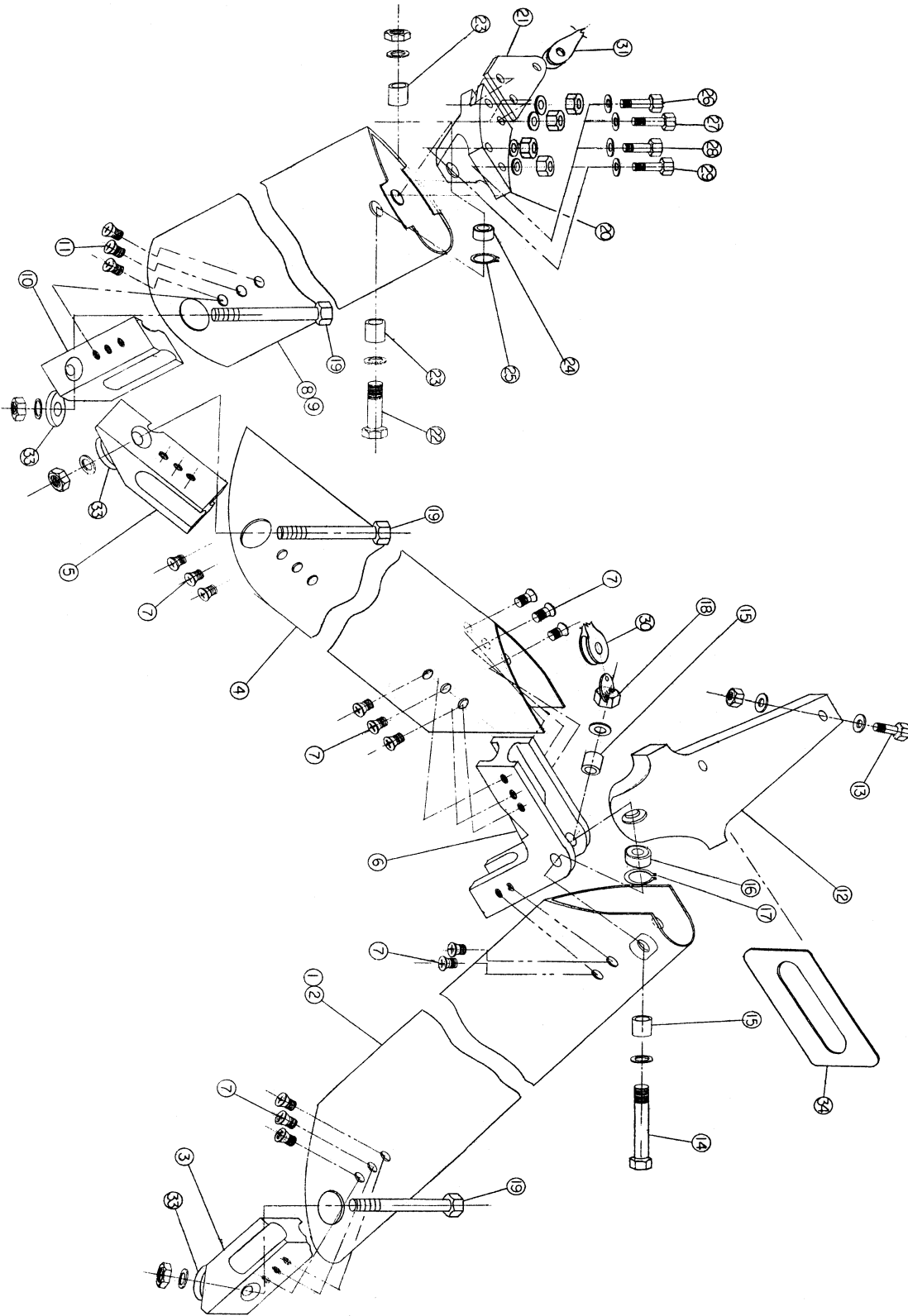
<u>REF. NO.</u>	<u>NO. REQ.</u>	<u>PART DESCRIPTION</u>	<u>PART NO.</u>
16	2	BOLT	AN6-25A
	4	WASHER	NAS1149PO663J
	2	NUT	MS21044N6
17	2	BOLT	AN6-32A
	4	WASHER	NAS1149DO663J
	2	NUT	MS21044N6
18	6	BOLT	AN9-60A
	12	WASHER	NAS1149DO963J
	6	NUT	MS21044N9
19	8	FITTING-HYDRAULIC	AN816-4D
20	1	ASSEMBLY FUSELAGE FITTING-LEFT	3A02000-003
	1	ASSEMBLY FUSELAGE FITTING-RIGHT	3A02000-004
21	1	FITTING-FUSELAGE-LEFT	3A02040-001
	1	FITTING-FUSELAGE-RIGHT	3A02040-002
22	1	BEARING-SWIVEL-MORSE	COMM. 10
23	1	SNAP RING	N5000-118H
24	2	BOLT	MS20006-30
	4	WASHER	NAS1149DO663J
	2	NUT	MS21044N6
25	2	BOLT	AN10-24A
	4	WASHER	NAS1149D1063J
26	4	BUSHING-REAR SWIVEL	3A02531-001
27	1	ASSEMBLY-WIRE PULL-UPPER LEFT	3A02000-007
	1	ASSEMBLY-WIRE PULL-UPPER RIGHT	3A02000-008

WIPLINE MODEL 3730-3900 FLOAT PARTS MANUAL

INSTALLATION STRUTS 206 – FIGURE 4

<u>REF. NO.</u>	<u>NO. REQ.</u>	<u>PART DESCRIPTION</u>	<u>PART NO.</u>
28	2	ASSEMBLY-BRACE WIRE	3A02000-044
	1	WIRE	AN676AC 63.25
	1	TERMINAL END-LEFT	AN665-80L
	1	TERMINAL END-RIGHT	AN665-80R
	1	NUT	AN316-6L
	1	NUT	AN316-6R
29	6	SPACER-STRUT TO FLOAT DECK	3A03272-001
30	1	COVER-STRUT FITTING-LEFT	3A02005-031
	1	COVER-STRUT FITTING-RIGHT	3A02005-030
31	1	STEP-PILOT DOOR	3A02350-003
	3	BOLT	AN3-24A
	3	NUT	MS21044N3
32	1	CARGO STEP (OPTIONAL 206)	3A02350-004
	2	BOLT	AN3-24A
	2	NUT	MS21044N3
33	4	CLEVIS PIN	MS20392-5C21
34	4	COTTER PIN	MS24665-302
35	1	WIRE PULL LOWER LEFT	3A02524-001
	1	WIRE PULL LOWER RIGHT	3A02524-002

WIPLINE MODEL 3730-3900 FLOAT PARTS MANUAL



INSTALLATION STRUTS 185 – FIGURE 5

WIPLINE MODEL 3730-3900 FLOAT PARTS MANUAL

INSTALLATION STRUTS 185 – FIGURE 5

REF. NO.	NO. REQ.	<u>PART DESCRIPTION</u>	<u>PART NO.</u>
1	1	ASSEMBLY-FRONT AND DIAGONAL STRUT-LEFT	3A02000-013
	1	ASSEMBLY-FRONT AND DIAGONAL STRUT-RIGHT	3A02000-014
2	1	STRUT-FRONT-LEFT	3A02356-011
	1	STRUT-FRONT-RIGHT	3A02356-012
3	1	FITTING-FRONT STRUT LOWER-LEFT	3A02045-013
	1	FITTING-FRONT STRUT LOWER-RIGHT	3A02045-012
4	1	STRUT-DIAGONAL-LEFT	3A02356-009
	1	STRUT-DIAGONAL-RIGHT	3A02356-010
5	1	FITTING-DIAGONAL STRUT-LOWER LEFT	3A02045-011
	1	FITTING-DIAGONAL STRUT-LOWER RIGHT	3A02045-010
6	2	FITTING-FRONT AND DIAGONAL STRUT-UPPER	3A02066-001
7	22	SCREW	MS24694S145
8	1	ASSEMBLY-REAR STRUT-LEFT	3A02000-015
	1	ASSEMBLY-REAR STRUT-RIGHT	3A02000-016
9	1	STRUT-REAR LEFT	3A02356-007
	1	STRUT-REAR RIGHT	3A02356-008
10	1	FITTING-REAR STRUT-LOWER LEFT	3A02045-009
	1	FITTING-REAR STRUT-LOWER RIGHT	3A02045-008
11	6	SCREW	MS24694S145
12	1	FITTING-FUSELAGE ATTACH-LEFT	3A02000-005
	1	FITTING-FUSELAGE ATTACH-RIGHT	3A02000-006
13	2	BOLT	AN7-20A
	4	WASHER	NAS1149D0763J
	2	NUT	MS20365-720A
14	2	BOLT	AN10-24A
	4	WASHER	NAS1149D1063J
15	4	BUSHING-FRONT SWIVEL	3A025311-001
16	2	BEARING-SWIVEL (MORSE)	COMM.10
17	2	SNAP RING	N5000-118H

WIPLINE MODEL 3730-3900 FLOAT PARTS MANUAL

INSTALLATION STRUTS 185 – FIGURE 5

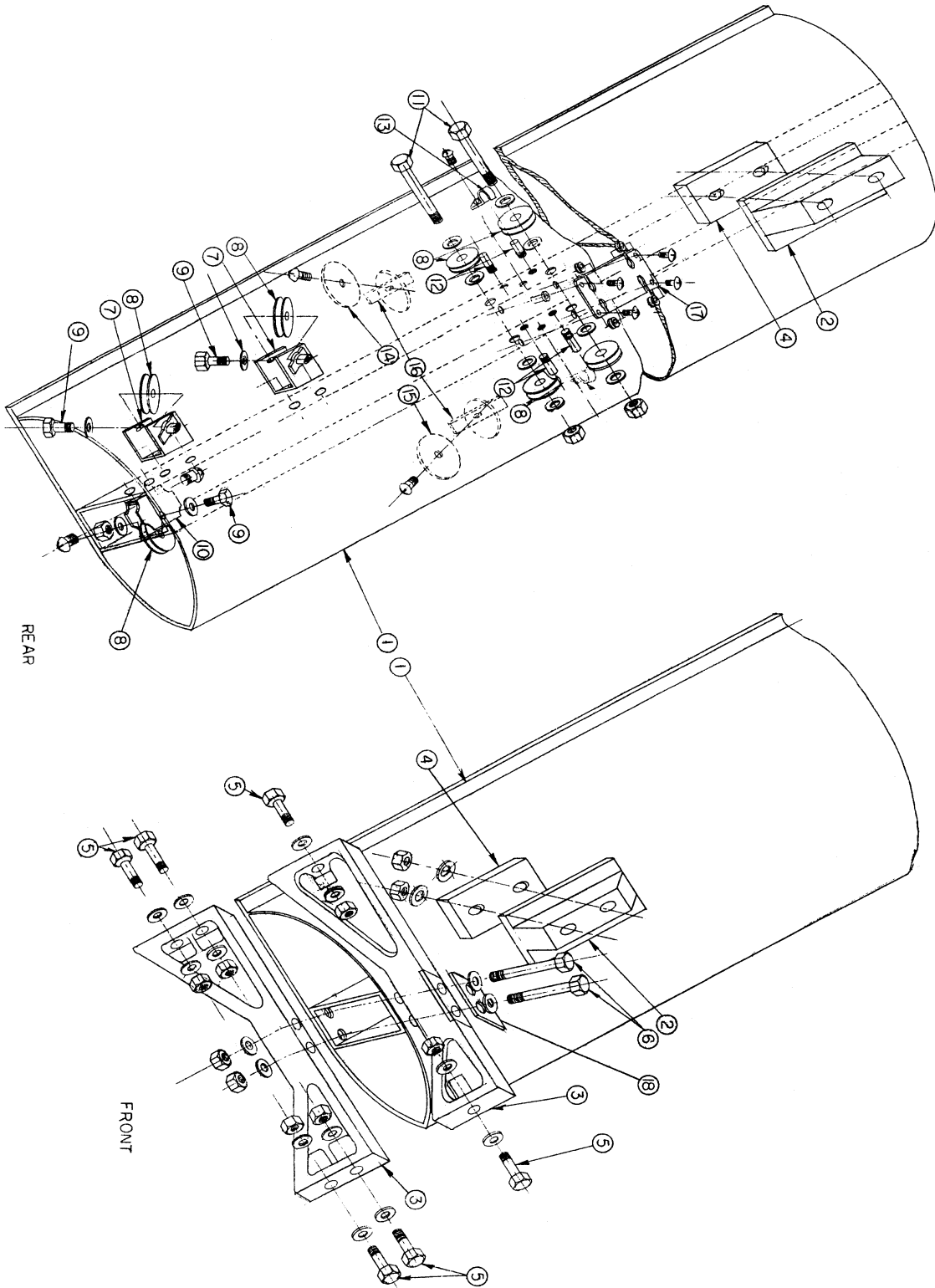
<u>REF. NO.</u>	<u>NO. REQ.</u>	<u>PART DESCRIPTION</u>	<u>PART NO.</u>
18	1	ASSEMBLY-WIREPULL-UPPER LEFT	3A02000-008
	1	ASSEMBLY-WIREPULL-UPPER RIGHT	3A02000-007
19	6	BOLT	AN9-60A
	12	WASHER	NAS1149D0963J
	6	NUT	MS21044N9
20	1	FITTING-REAR FUSELAGE-LEFT	3A02344-001
	1	FITTING-REAR FUSELAGE-RIGHT	3A02344-002
21	1	FITTING-BRACE WIRE-LEFT	3A02065-001
	1	FITTING-BRACE WIRE-RIGHT	3A02065-002
	1	FITTING-BRACE WIRE-LEFT - ASSEMBLY	3A02000-017
	1	FITTING-BRACE WIRE-RIGHT - ASSEMBLY	3A02000-018
22	2	BOLT	AN8-23A
	4	WASHER	NAS1149DO863J
	2	NUT	MS21044N8
23	4	BUSHING-REAR SWIVEL	3A02527-003
24	2	BEARING-SWIVEL (MORSE)	COMM.8
25	2	SNAP RING	N5000-100H
26	2	BOLT	AN5-32A
	4	WASHER	NAS1149DO563J
	2	NUT	MS21044N5
27	2	BOLT	AN5-15A
	4	WASHER	NAS1149DO563J
	2	NUT	MS21044N5
28	2	BOLT	AN5-30A
	4	WASHER	NAS1149DO563J
	2	NUT	MS21044N5

WIPLINE MODEL 3730-3900 FLOAT PARTS MANUAL

INSTALLATION STRUTS 185 – FIGURE 5

REF. NO.	NO. REQ.	<u>PART DESCRIPTION</u>	<u>PART NO.</u>
29	2	BOLT	AN5-12A
	4	WASHER	NAS1149DO563J
	2	NUT	MS21044N5
30	2	ASSEMBLY-BRACE WIRE-FRONT	3A02000-045
	1	WIRE	AN676AC-59.75
30	2	ASSEMBLY-BRACE WIRE-FRONT	3A02000-045
	1	WIRE	AN676AC-59.75
	1	TERMINAL END-LEFT	AN665-80L
	1	TERMINAL END-RIGHT	AN665-80R
	1	NUT-LEFT	AN316-6L
	1	NUT-RIGHT	AN316-6R
	2	CLEVIS PIN	MS20392-5C21
31	2	ASSEMBLY-BRACE WIRE-REAR	3A02000-046
	1	WIRE	AN676AC-55.75
	1	TERMINAL END-LEFT	AN665-80L
	1	TERMINAL END-RIGHT	AN665-80R
	1	NUT-LEFT	AN316-6L
	1	NUT-RIGHT	AN316-6R
32	1	STEP-ENTRANCE-LEFT & RIGHT	3A02369-034
33	6	SPACER-STRUT TO FLOAT DECK	3A03272-001
34	1	COVER-STRUT FITTING-LEFT	3A02005-171
	1	COVER-STRUT FITTING-RIGHT	3A02005-032
35	2	WIRE PULL – RIGHT – FWD & REAR	3A02524-001
	2	WIRE PULL – LEFT – FWD & REAR	3A02524-002

WIPLINE MODEL 3730-3900 FLOAT PARTS MANUAL



INSTALLATION – SPREADER BAR – FIGURE 6

WIPLINE MODEL 3730-3900 FLOAT PARTS MANUAL

INSTALLATION SPREADER BAR – FIGURE 6

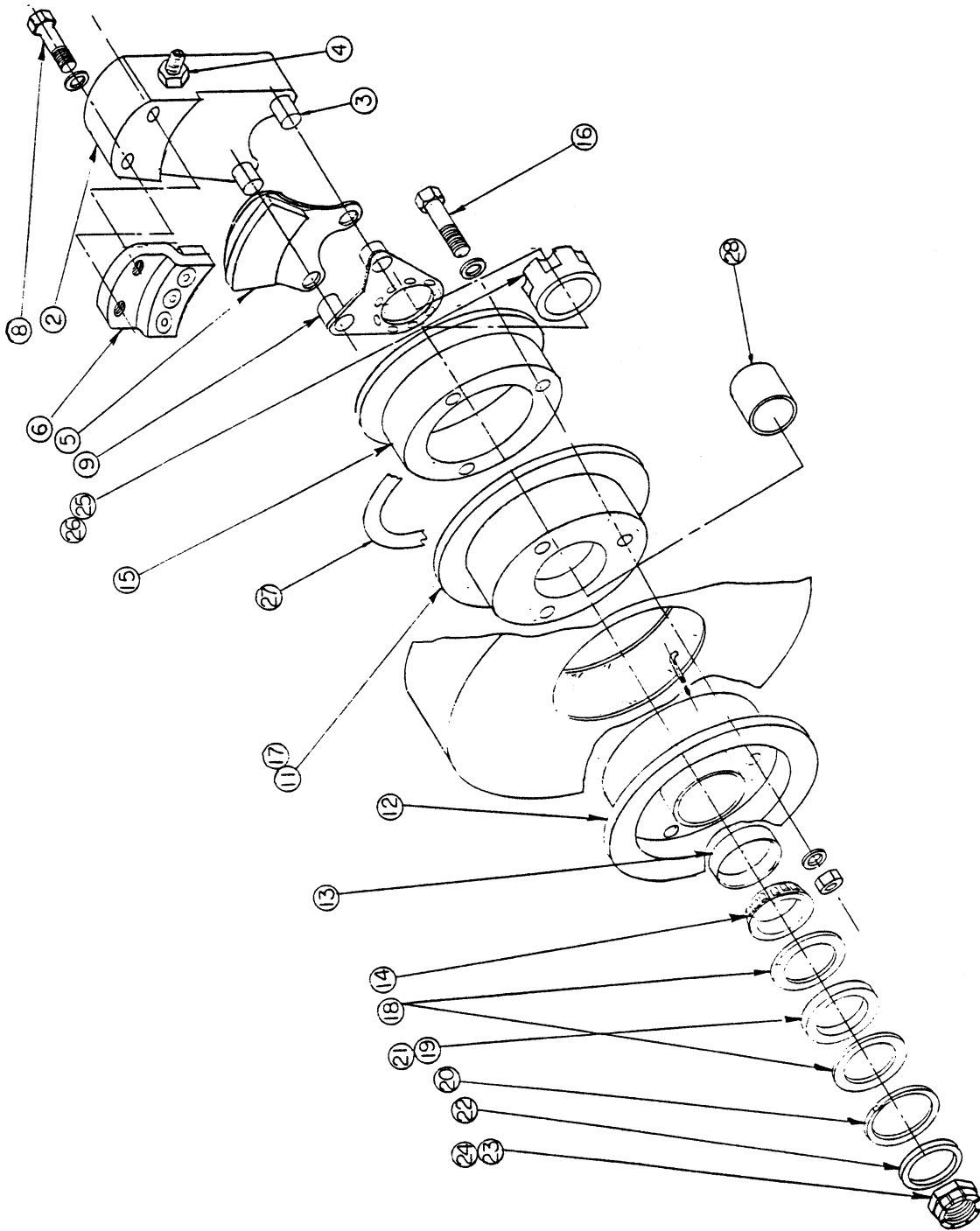
REF. NO.	NO. REQ.	<u>PART DESCRIPTION</u>	<u>PART NO.</u>
1	1	ASSEMBLY-FRONT SPREADER BAR	3A03000-001
	1	ASSEMBLY-REAR SPREADER BAR (SPECIFY 206 OR 185)	3A03000-002
2	2	BLOCK-SPREADER BAR ATTACH (CESSNA 185) UPPER	3A03345-001
	2	BLOCK-SPREADER BAR ATTACH (CESSNA 206) UPPER	3A03345-001
3	1	CASTING-CLAMP-UPPER RIGHT-OUTBOARD	3A01436-002
	1	CASTING-CLAMP-UPPER RIGHT-INBOARD	3A01436-001
	1	CASTING-CLAMP-UPPER LEFT-OUTBOARD	3A01436-001
	1	CASTING-CLAMP-UPPER LEFT-INBOARD	3A01436-002
	1	CASTING-CLAMP-LOWER RIGHT-OUTBOARD	3A01436-004
	1	CASTING-CLAMP-LOWER RIGHT-INBOARD	3A01436-003
	1	CASTING-CLAMP-LOWER LEFT-OUTBOARD	3A01436-003
	1	CASTING-CLAMP-LOWER LEFT-INBOARD	3A01436-004
		NOTE: ABOVE CASTING CLAMPS FOR FRONT AND REAR SPREADER BAR	
4	2	BLOCK-SPREADER BAR ATTACH (185 FRONT) LOWER	3A03197-001
	2	BLOCK-SPREADER BAR ATTACH (185 REAR) LOWER	3A03197-002
	2	BLOCK-SPREADER BAR ATTACH (206 FRONT) LOWER	3A03197-002
	2	BLOCK-SPREADER BAR ATTACH (206 REAR) LOWER	3A03197-001
5	24	BOLT	AN4-10A
	24	NUT	AN365-428
	48	WASHER	AN960PD416
6	16	BOLT	AN5-60A
	32	WASHER	NAS1149DO563J
	16	NUT	MS21044N5
7	1	ASSEMBLY-PULLEY BRACKET-LEFT OUTBOARD	3A03000-003
	1	ASSEMBLY-PULLEY BRACKET-RIGHT OUTBOARD	3A03000-004
	1	ASSEMBLY-PULLEY BRACKET-LEFT INBOARD	3A03000-005
	1	ASSEMBLY-PULLEY BRACKET-RIGHT INBOARD	3A03000-006
8	10	PULLEY	MS20219-2

WIPLINE MODEL 3730-3900 FLOAT PARTS MANUAL

INSTALLATION- SPREADER BAR – FIGURE 6

REF. NO.	NO.	<u>PART DESCRIPTION</u>	<u>PART NO.</u>
<u>NO.</u>	<u>REQ.</u>		
9	6	BOLT-PULLEY ATTACH	AN4-7A
	A/R	WASHER	NAS1149DO563J
	6	NUT	MS21044N5
10	2	PULLEY BRACKET	3A01151-010
	1	DOUBLER-PULLEY BRACKET (TAPPED)	3A03001-01
	2	SCREW-ATTACH	AN526-832-8
	2	WASHER	MS35333-38
	1	COTTER PIN	AN380-2-3
11	2	BOLT	AN4-33A
	4	WASHER	NAS1149DO416J
	2	NUT	MS21044N4
12	4	CABLE GUIDE	3A03269-001
13	1	CABLE GUIDE	3A03005-029
	1	SCREW	AN526-832R6
	1	WASHER	MS35333-38
14	1	COVER-INSPECTION FLAT-AFT.	3A03005-020
	1	SCREW-ATTACH	AN526-832R6
15	1	COVER-INSPECTION CURVED-FWD.	3A03005-021
	1	SCREW ATTACH	AN526-832R6
16	2	STRIP-INSPECTION COVER ATTACHING	3A03156-008
17	1	CABLE GUIDE	3A03005-169
	4	SCREW-ATTACH	AN526-632R4
	4	GROMMET	MS35489-4
18	2	SPACER-SPREADER BAR CAST. (206 FRONT ONLY)	3A03186-001

WIPLINE MODEL 3730-3900 FLOAT PARTS MANUAL



ASSEMBLY - WHEEL AND BRAKES – FIGURE 7

WIPLINE MODEL 3730-3900 FLOAT PARTS MANUAL

ASSEMBLY - WHEEL AND BRAKES – FIGURE 7

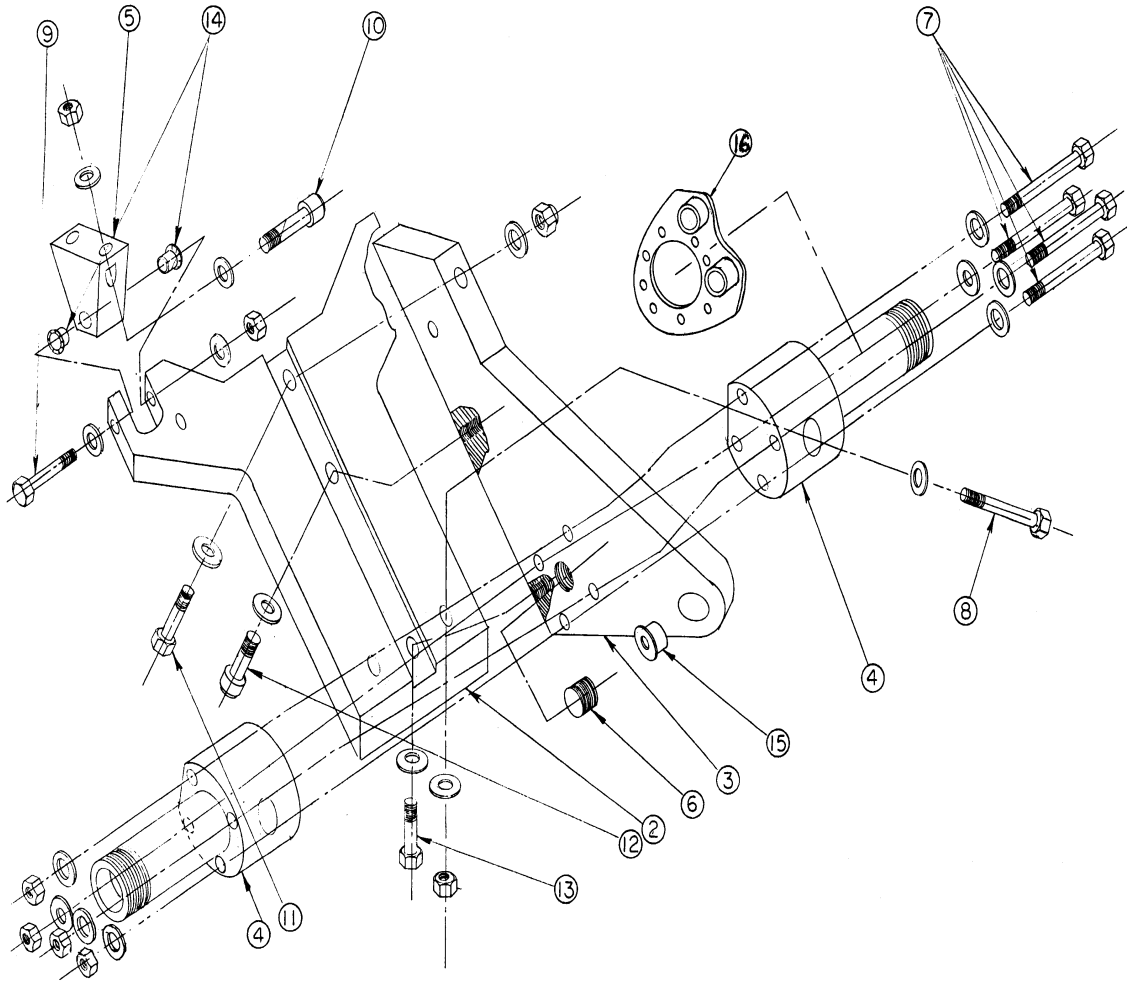
<u>REF. NO.</u>	<u>NO. REQ.</u>	<u>PART DESCRIPTION</u>	<u>PART NO.</u>
1	1	ASSEMBLY-BRAKE AND TORQUE PLATE	3A04000-052 (30-9C)
2	1	ASSEMBLY-CYLINDER	91-7A
	1	CYLINDER-BRAKE	61-6A
	1	ASSEMBLY-PISTON	92-2
	1	PISTON	062-00300
	1	"O" RING	MS28775-218
3	2	ANCHOR BOLT	3A04702-001
	2	WASHER	NAS1149DO416J
	2	NUT	NAS679A4W
4	1	SEAT-BLEEDER	081-00100
	1	SCREW-BLEEDER	079-00300
	1	CAP-BLEEDER	183-1
5	1	ASSEMBLY-PRESSURE PLATE	073-00300
	1	PLATE-PRESSURE	063-00500
	1	LINING	066-10600
	3	RIVET	105-00200
6	1	ASSEMBLY-BACK PLATE	074-00200
	1	PLATE-BACK	064-00500
	1	LINING	066-10600
	3	RIVET	105-00200
7	1	SHIM (SS STEEL BRAKE DISC ONLY)	3A04152-001
8	2	BOLT	AN4H15A
	2	WASHER	NAS1149DO416J
9	1	ASSEMBLY-TORQUE PLATE-LEFT	3A04711-001
	1	ASSEMBLY-TORQUE PLATE-RIGHT	3A04711-002
10	1	ASSEMBLY-WHEEL	3A04000-060 (40-78A)
11	1	INNER WHEEL HALF	161-04100
12	1	OUTER WHEEL HALF	162-03900

WIPLINE MODEL 3730-3900 FLOAT PARTS MANUAL

ASSEMBLY - WHEEL AND BRAKES – FIGURE 7

REF.	NO.	<u>NO.</u> <u>REQ.</u> <u>PART DESCRIPTION</u>	<u>PART NO.</u>
13	2	CUP-BEARING	08231
	2	CUP-BEARING (CHROME PLATED)	08231CP
14	2	CONE-BEARING	08215
	2	CONE-BEARING (CHROME PLATED)	08215CP
15	1	BRAKE DISC ASSEMBLY MIN. THK .167	164-01700
16	3	BOLT	AN4-22A
	3	WASHER	NAS1149DO416J
	3	NUT	MS21044N4
17	1	GROMMET-RUBBER (INNER WHEEL HALF)	217-00100
18	4	RING-GREASE SEAL-FELT SEAL ONLY	153-00800
19	2	SEAL-FELT	154-00600
20	2	SNAP RING-FELT SEAL ONLY	155-00200
21	2	SEAL-NATIONAL OIL SEAL (ALTERNATE)	473237
22	1	SPACER-OUTER-FELT SEAL-ONLY	9A3-149
23	1	NUT-FELT SEAL-ONLY	3A04268-003
24	1	NUT-NATIONAL OIL SEAL-ONLY	3A04092-001
25	1	SPACER-INNER-FELT SEAL-ONLY	9B3-148
26	1	SPACER-INNER-NATIONAL OIL SEAL-ONLY	3A04093-001
27	1	GASKET-TEFLON	3A04620-001
28	1	GREASE RETAINER	3A04616-001
29	1	TUBE 5.00 X 5	XA1AC
30	1	TIRE 5.00 - 5 - 6	AA1D4

WIPLINE MODEL 3730-3900 FLOAT PARTS MANUAL

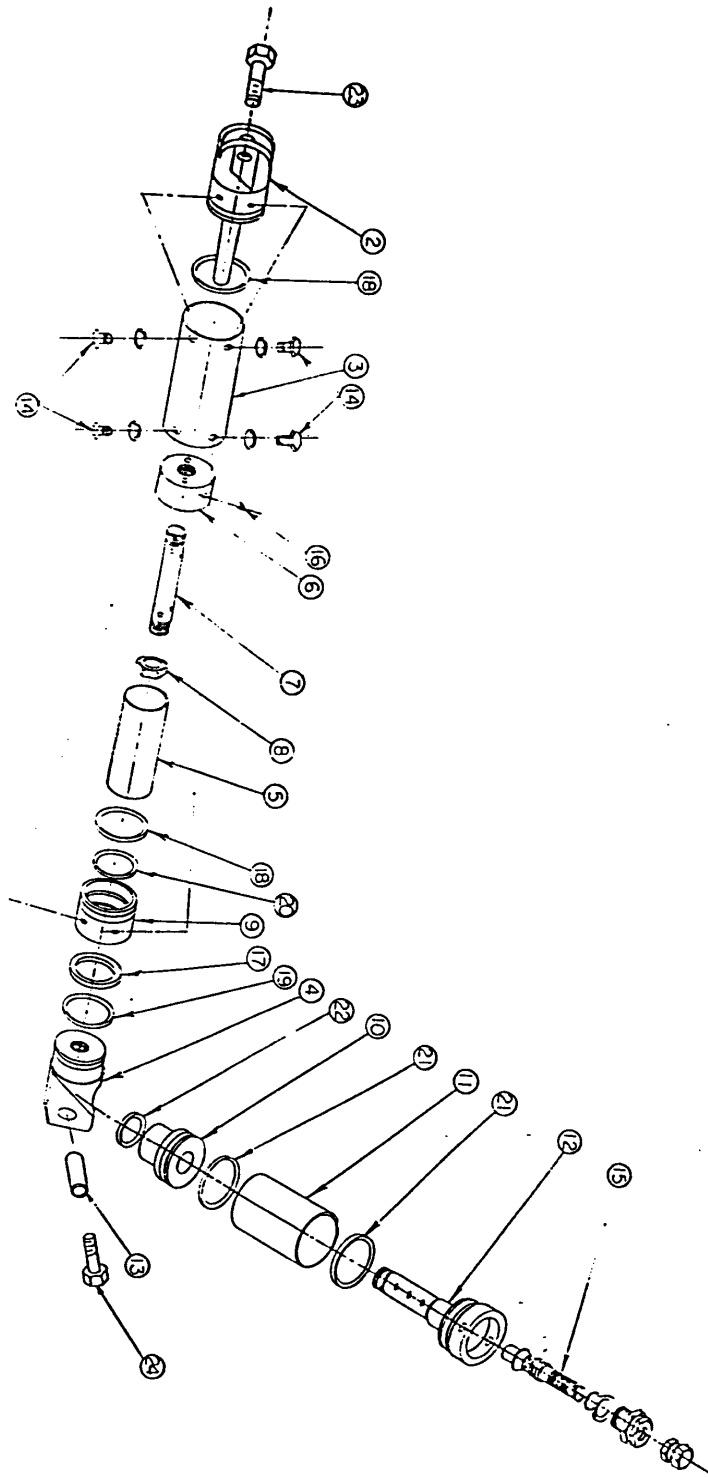


ASSEMBLY - MAIN LANDING GEAR – FIGURE 8

WIPLINE MODEL 3730-3900 FLOAT PARTS MANUAL

ASSEMBLY - MAIN LANDING GEAR – FIGURE 8

REF. NO.	NO. REQ.	<u>PART DESCRIPTION</u>	<u>PART NO.</u>
1	1	ASSEMBLY-MAIN LANDING GEAR	3A04000-002
2	1	SUPPORT-AXLE MOUNT	3A04189-001
3	1	MOUNT-AXLE	3A04189-002
4	2	AXLE	3A04086-001
5	2	TRUNION	3A04039-001
6	1	NUT-BARREL	3A04518-002
7	4	BOLT-AXLE ATTACH	AN4-53A
	8	WASHER	NAS1149DO416J
	4	NUT	MS21044N4
8	2	BOLT-AXLE TO MOUNT ATTACH	AN4-30A
	4	WASHER	NAS1149DO416J
	2	NUT	MS21044N4
9	2	BOLT-MOUNT TO TRUNION ATTACH	AN5-25A
	4	WASHER	NAS1149DO563J
	2	NUT	MS21044N5
10	4	BOLT-TRUNION ATTACH	NAS144-18
	8	WASHER	NAS1149DO463J
	4	NUT	MS21044N4
11	1	BOLT-SUPPORT TO MOUNT ATTACH	AN6-16A
	1	WASHER	NAS1149DO663J
12	1	BOLT-SOC. HD. CAP SCREW	MS16997-99
	1	WASHER	NAS1149DO663J
13	1	BOLT-SUPPORT TO MOUNT ATTACH	AN6-22A
	3	WASHER	NAS1149DO663J
	1	NUT	MS21044N6
14	4	NYLINER	5L5F
15	2	NYLINER	8L8F
16	1	TORQUE PLATE-BRAKE LEFT	3A04711-001
	1	TORQUE PLATE-BRAKE RIGHT	3A04711-002



ASSEMBLY - MAIN GEAR OLEO - FIGURE 9

WIPLINE MODEL 3730-3900 FLOAT PARTS MANUAL

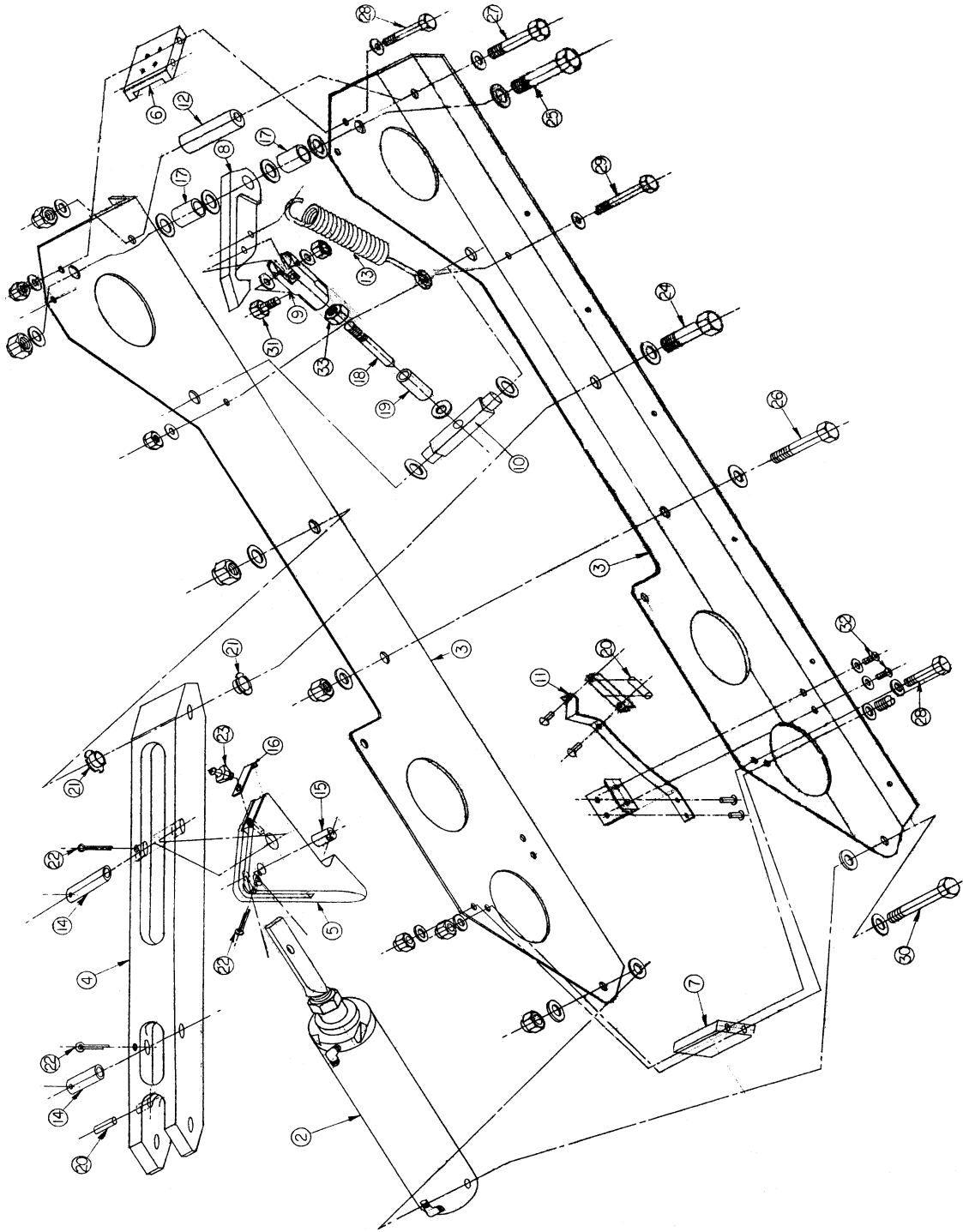
ASSEMBLY - MAIN GEAR OLEO – FIGURE 9

<u>REF. NO.</u>	<u>NO.</u>	<u>PART DESCRIPTION</u>	<u>PART NO.</u>
1	2	ASSEMBLY-OLEO SHOCK STRUT-COMPLETE	3A04000-003
2	1	BASE-SHOCK STRUT CYLINDER	3A04090-001
2A	1	PIN – METERING	3A04258-008
		“LETTER” CODE SEE PAGE 87	
3	1	BODY-CYLINDER	3A04528-001
4	1	TOP-SHOCK STRUT CYLINDER	3A04529-001
5	1	CYLINDER-INNER	3A04529-001
6	1	PISTON	4A04250-001
7	1	METERING TUBE	3A04273-001
8	1	NUT-JAMB	AN924-8D
9	1	RETAINER-SHOCK STRUT	3A04713-001
		“LETTER” CODE SEE PAGE 87	
10	1	END CAP-ACCUMULATOR	3A04089-003
11	1	BODY-ACCUMULATOR	3A04118-001
12	1	STEM AND END CAP	3A04089-004
13	1	BUSHING	3A04619-002
14	8	BOLT	4A04710-001
	8	WASHER	MS35333-40
15	1	VALVE-FILLER	MS28889-2
16	1	SET SCREW	1032NF X 3/16
17	1	FELT PACKING	3A04580-003
18	2	"O" RING	MS28775-225

WIPLINE MODEL 3730-3900 FLOAT PARTS MANUAL

ASSEMBLY - MAIN GEAR OLEO – FIGURE 9

<u>REF. NO.</u>	<u>NO. REQ.</u>	<u>PART DESCRIPTION</u>	<u>PART NO.</u>
19	1	"O" RING	MS28775-218
20	1	"O" RING	MS28775-326
21	2	"O" RING	MS28775-216
22	1	"O" RING	MS28775-112
23	1	"O" RING (AIR VALVE) NOT PICTURED	MS28775-015
24	1	BOLT-OLEO ATTACH	AN8-24A
	2	WASHER	NAS1149FO863P
	1	NUT	MS21083N8
25	1	BOLT-OLEO ATTACH	AN6-22A
	2	WASHER	NAS1149DO663J
	1	NUT	MS21044N6



ASSEMBLY - RETRACTOR MAIN GEAR – FIGURE 10

WIPLINE MODEL 3730-3900 FLOAT PARTS MANUAL

ASSEMBLY - RETRACTOR MAIN GEAR – FIGURE 10

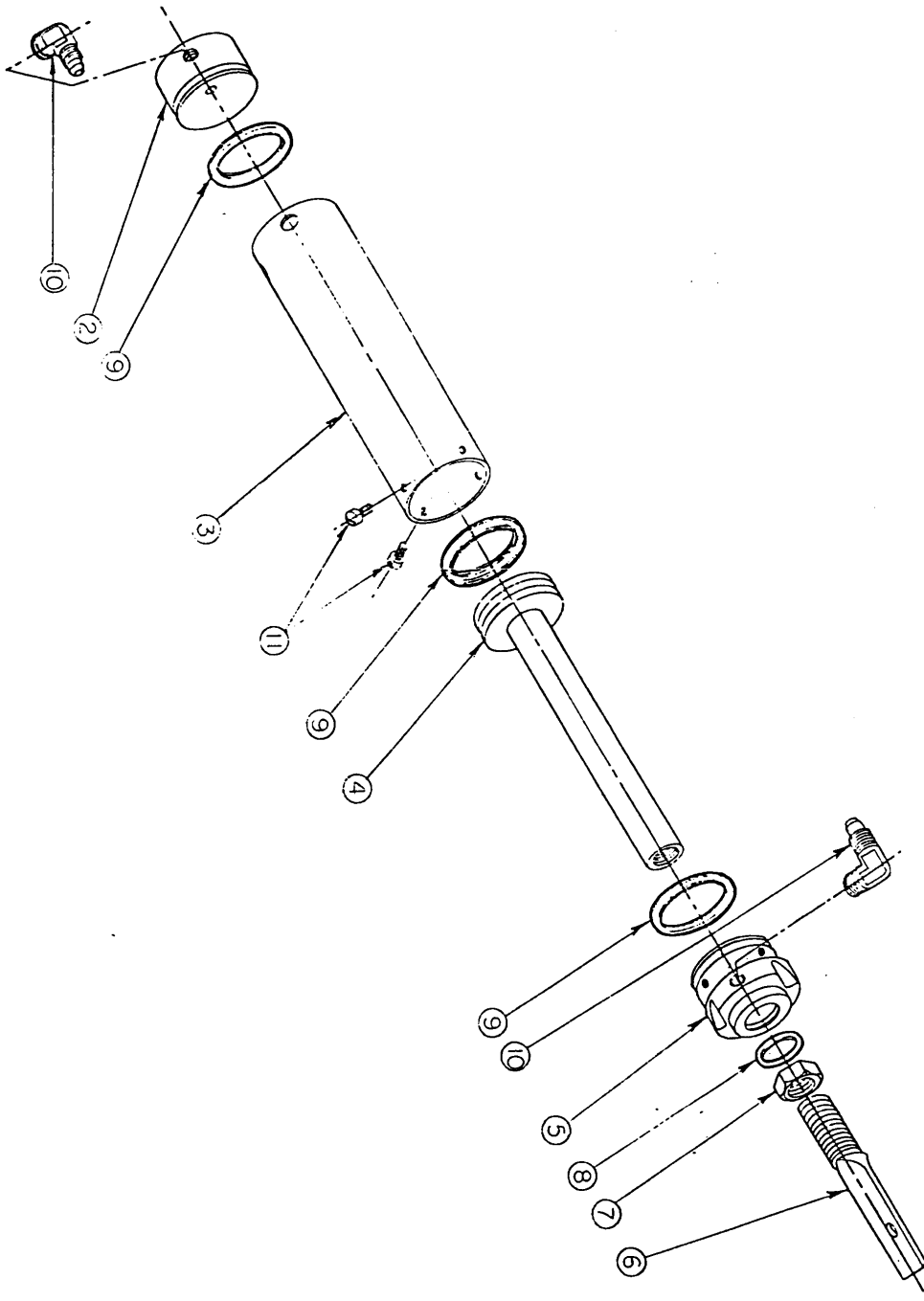
REF. NO.	NO. REQ.	<u>PART DESCRIPTION</u>	<u>PART NO.</u>
1	1	ASSEMBLY-RETRACTOR-COMPLETE	3A05000-001
2	1	CYLINDER-RETRACTOR	3A05000-002
3	1	FRAME-RETRACTOR R. OUTBR'D-L. INBR'D	3A05360-002
	1	FRAME-RETRACTOR L. OUTBR'D-R. INBR'D	3A05360-001
4	1	DRAG BRACE	3A05059-001
5	1	LATCH-MAIN GEAR EXTENDED	3A05060-001
6	1	STOP-DRAG BRACE UP	3A05038-001
7	1	STOP-DRAG BRACE DOWN	3A05038-002
8	1	LATCH-MAIN GEAR RETRACTED	3A05033-001
9	1	FORK-UP LATCH RELEASE	3A05061-001
10	1	GUIDE UP LATCH RELEASE	3A05061-002
11	1	MAGNET-HOLDER ASSEMBLY-W/MAGNET	3A05000-005
12	1	SPACER-RETRACT	3A05267-001
13	1	SPRING-UP LATCH	3A08525-001
14	2	PIN-DOWN LATCH LARGE	3A05523-001
15	1	PIN-DOWN LATCH SMALL	3A05521-002
16	1	STRIKER PLATE-DOWN LATCH	3A05526-001
17	2	SPACER-NYLON	3A05619-001
18	1	SHAFT-UP LATCH RELEASE	3A05521-001
19	1	SPACER-SLEEVE	3A05267-002
20	2	MAGNET	3A05701-001

WIPLINE MODEL 3730-3900 FLOAT PARTS MANUAL

ASSEMBLY - RETRACTOR MAIN GEAR – FIGURE 10

REF. NO.	NO. REQ.	<u>PART DESCRIPTION</u>	<u>PART NO.</u>
21	2	BUSHING-NYLINER	6L11F
22	3	COTTER PIN	MS24665-303
23	1	GREASE ZERK	1095K41
24	1	BOLT-DRAG BRACE HINGE	AN6-26A
	2	WASHER	NAS1149DO663J
	1	NUT	MS21044N6
25	1	BOLT-LATCH MAIN GEAR UP	AN6-25A
	6	WASHER	NAS1149DO663J
	1	NUT	MS21044N6
26	1	BOLT-CATCH DOWN LOCK	AN5-25A
	2	WASHER	NAS1149DO563J
	1	NUT	MS21044N5
27	1	BOLT-FRAME SPACER	AN4-24A
	2	WASHER	NAS1149DO416J
	1	NUT	MS21044N4
28	4	BOLT-UP-DOWN STOPS	AN3-23A
	8	WASHER	NAS1149DO363J
	4	NUT	MS21044N3
29	1	BOLT-SPRING END	AN3-24A
	2	WASHER	NAS1149DO363J
	1	NUT	MS21044N3
30	1	BOLT-OLEO ATTACH	AN4-24A
	2	WASHER	NAS1149DO463J
	2	WASHER	NAS1149DO416J
	1	NUT	MS21044N4
31	1	BOLT-UP LATCH FORK	AN3-7A
	2	WASHER	NAS1149DO316J
	1	NUT	MS21044N3
32	2	SCREW-MAGNET HOLDER ATTACH	AN526-832R6
	2	WASHER	MS35333-38
33	1	JAMB NUT	1/4-20

WIPLINE MODEL 3730-3900 FLOAT PARTS MANUAL



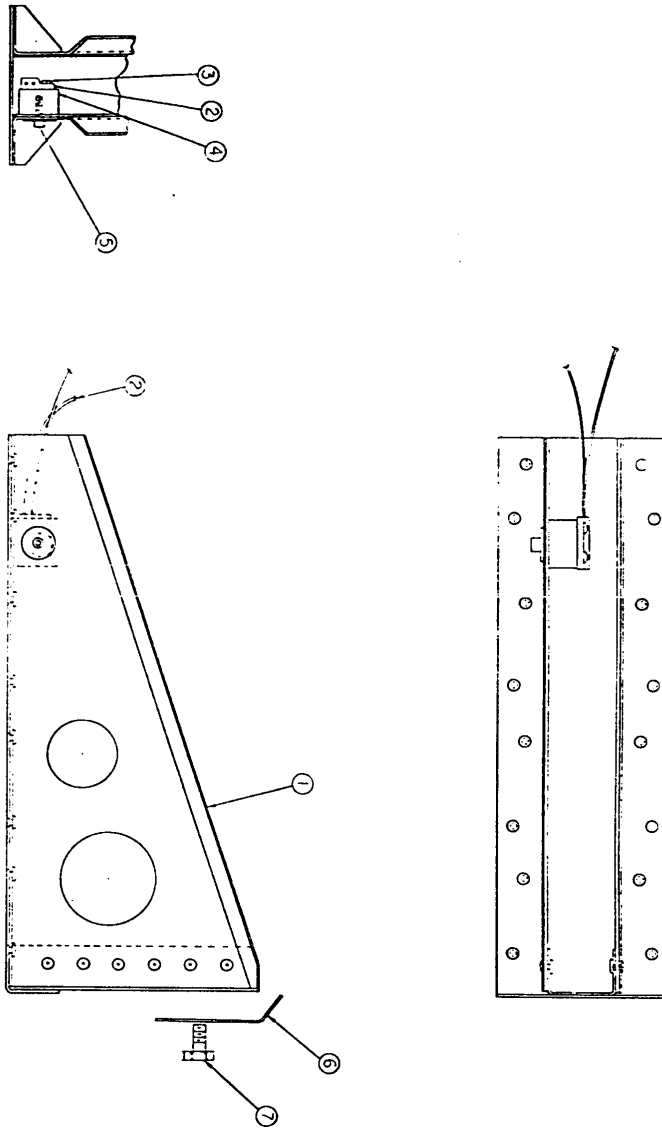
ASSEMBLY - CYLINDER MAIN GEAR RETRACTOR – FIGURE 11

WIPLINE MODEL 3730-3900 FLOAT PARTS MANUAL

ASSEMBLY - CYLINDER MAIN GEAR RETRACTOR – FIGURE 11

REF. NO.	NO.	<u>PART DESCRIPTION</u>	<u>PART NO.</u>
1	1	ASSEMBLY CYLINDER-RETRACTOR	3A05000-002
2	1	END-LOWER MAIN CYLINDER	3A05089-002
3	1	BODY-CYLINDER	3A05402-001
4	1	ASSEMBLY-PLUNGER	3A05000-004
5	1	END-UPPER MAIN CYLINDER	3A05089-001
6	1	LINK-PLUNGER SHAFT	3A05518-001
7	1	JAMB NUT	AN316C8R
8	1	"O" RING	MS28775-114
9	3	"O" RING	MS28775-216
10	2	ELBOW	MS20822-4D
11	4	SCREW (INSTALL WITH LOCKTITE)	AN503-8-4

WIPLINE MODEL 3730-3900 FLOAT PARTS MANUAL



ASSEMBLY - RETRACTOR BRACE AND SWITCH – FIGURE 12

WIPLINE MODEL 3730-3900 FLOAT PARTS MANUAL

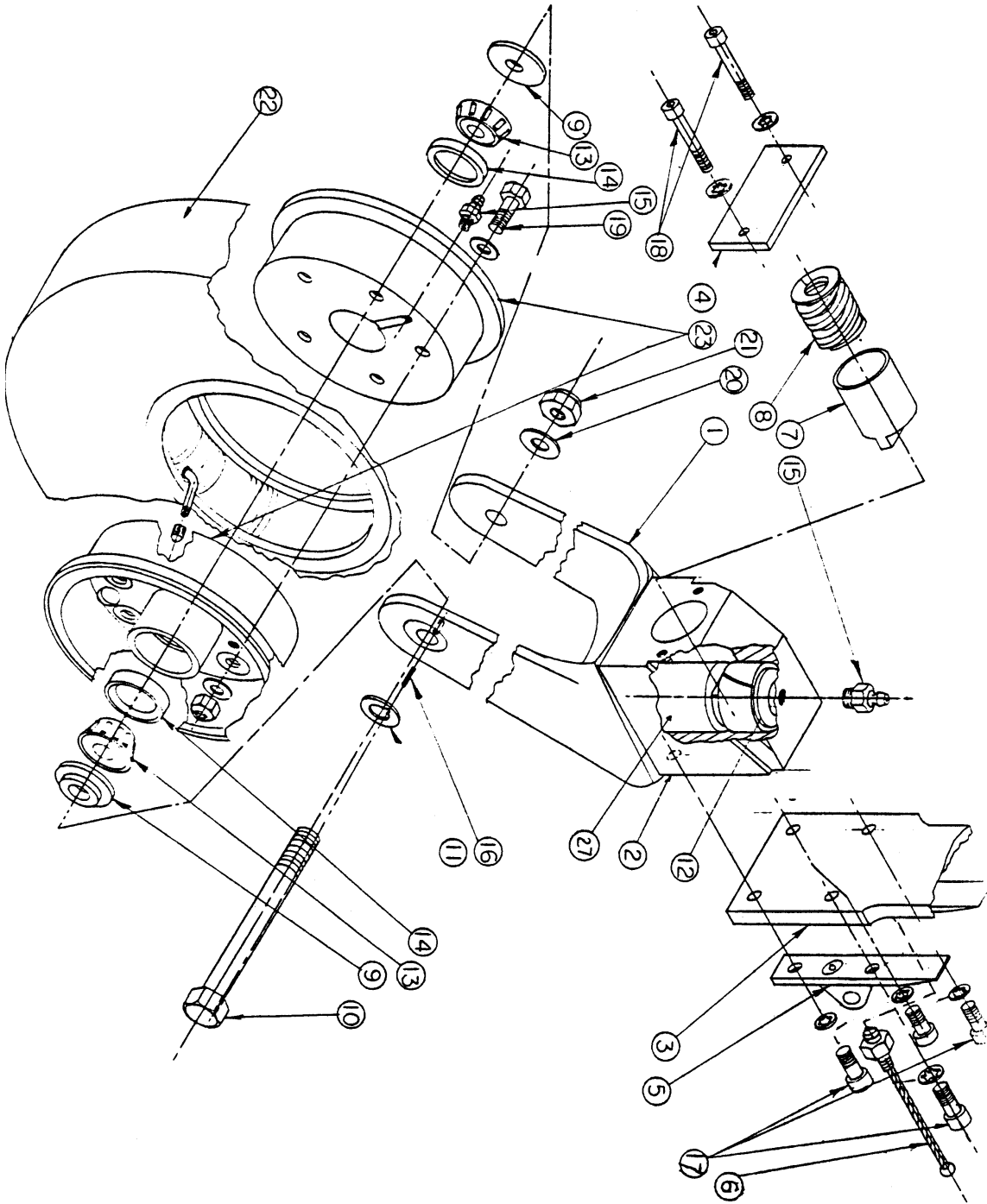
ASSEMBLY - RETRACTOR BRACE AND SWITCH- FIGURE 12

REF. NO.	NO. REQ.	<u>PART DESCRIPTION</u>	<u>PART NO.</u>
1	1	ASSEMBLY-RETRACTOR BRACE	3A05000-003
2	1	SWITCH	5801
3	2	SCREW-SWITCH ATTACH	AN515C6-8
4	1	MOUNTING BLOCK-SWITCH	3A05603-003
5	1	SCREW-SOC.HD.CAP SCREW-SWITCH BLOCK	1032 X 1/2"
	1	WASHER	AN970-3
6	A/R	SPACER-BRACE ASSEMBLY (.032)	3A05005-22
7	1	BOLT-SPACER ATTACH	AN4-6A
	2	WASHER	NAS1149DO463J
	1	NUT	MS21044N4

WIPLINE MODEL 3730-3900 FLOATS PARTS MANUAL

ASSEMBLY - NOSE WHEEL, FIGURE 13

<u>REF NO.</u>	<u>NO. REQ.</u>	<u>PART DESCRIPTION</u>	<u>PART NO.</u>
1	1	BOLT, MODIFIED, AXLE, NOSE GEAR	1005927
2	2	SPACER	1005928
3	1	ASSEMBLY, NOSE WHEEL	1006679
3.1	1	WHEEL ASSEMBLY, GROVE	49-12AF-001
3.1.1	1	GREASE RETAINER	010-019
3.1.2	2	SEAL	010-026
3.1.3	1	WHEEL HALF INNER	015-020A
3.1.4	1	WHEEL HALF OUTER	016-020AF
3.1.5	2	BEARING CORE	A4050
3.1.6	2	BEARING CONE	A4138
3.1.7	3	BOLT	AN4-23A
3.1.8	3	NUT	MS21044N-4
3.1.9	2	O-RING	MS28775-029
3.1.10	6	WASHER	NAS1149F0416
3.2	1	TUBE	XA1AB
3.3	1	TIRE	AD1B2
4	1	COMMON GREASEZERK	1095K41
5	1	MODIFIED WASHER	3A06702-003
6	1	NUT	MS21083N8
7	1	WASHER	NAS1149D0863J



ASSEMBLY - NOSE GEAR WHEEL (PARKER) – FIGURE 14

WIPLINE MODEL 3730-3900 FLOATS PARTS MANUAL

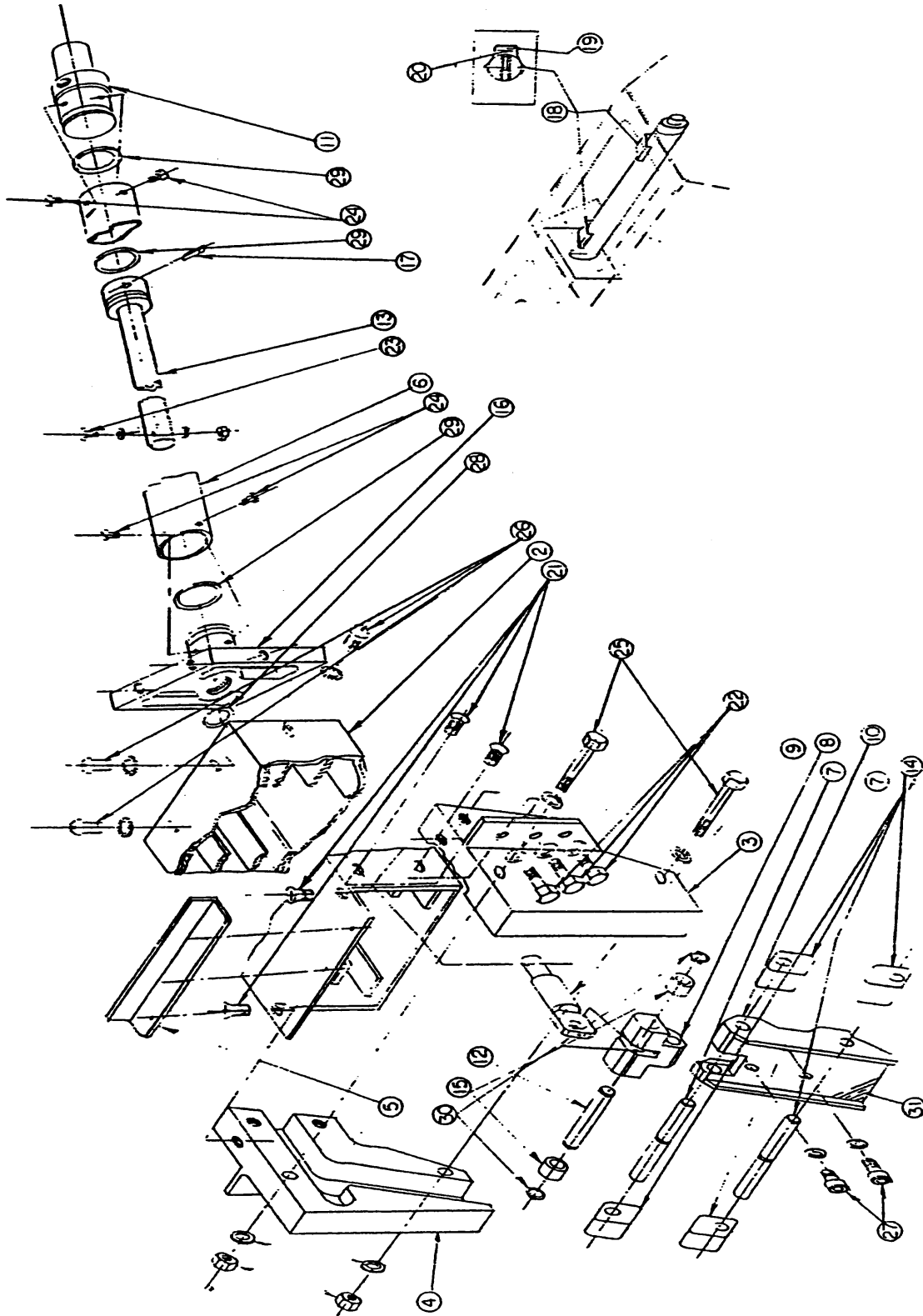
ASSEMBLY - NOSE GEAR WHEEL (PARKER) – FIGURE 14

REF. NO.	NO.	PART DESCRIPTION	PART NO.
	<u>NO.</u>	<u>REQ.</u>	<u>PART NO.</u>
1	1	NOSE FORK - ASSEMBLY	3A06000-002
2	1	PIVOT BLOCK	3A06031-001
3	1	SPRING-NOSE GEAR	3A06511-001
4	1	COVER-NOSE GEAR CENTERING SPRING	3A06037-001
5	1	UP STOP WEDGE-OUTBOARD	3A06209-001
	1	ASSEMBLY UP STOP WEDGE W/TOW BLOCK	3A06000-003
6	1	ASSEMBLY-INDICATOR VISUAL UP	3A06000-004
7	1	CENTERING PISTON	3A06512-001
8	1	SPRING CENTERING	3A06525-002
9	2	SPACER-DUST COVER-McCAULEY WHEEL	3A06259-001
10	1	AXLE-NOSE WHEEL	3A06702-002
11	1	WASHER	3A06702-003
12	1	WASHER-THRUST	3A06602-001
13	2	BEARING-CONE	A4050
	2	BEARING-CONE-CHROME PLATED	A4050 20027
14	2	BEARING-CUP	A4138
	2	BEARING-CUP-CHROME PLATED	A4138 20027
15	2	GREASE-ZERK	1095K41
16	1	PIN-ANTI AXLE ROTATE	3A06476-001
17	4	BOLT-SOC. HD. CAP SCREW	MS16997-83
	4	WASHER-LOCK	MS35333-41

WIPLINE MODEL 3730-3900 FLOATS PARTS MANUAL

ASSEMBLY - NOSE GEAR WHEEL– FIGURE 14

REF. NO.	NO. REQ.	<u>PART DESCRIPTION</u>	<u>PART NO.</u>
18	2	BOLT-SOC. HD. CAP SCREW	MS16997-40
	2	WASHER-LOCK	MS35333-40
19	3	BOLT	AN4-7A
	6	WASHER	NAS1149FO463P
	3	NUT	MS21044N4
20	1	WASHER	NAS1149DO863P
21	1	NUT	MS21044N8
22	1	TIRE	10X3.50-4 AD1B2
	1	TUBE	4.10X3.5 XA1AB
23	1	GASKET (WHEEL HALVES) NOT SHOWN	068-30373
	1	WHEEL ASSY. W/TIRE, TUBE & BEARINGS	3A06000-010
	1	WHEEL ASSY. W/BEARING CUP	3A06000-018



ASSEMBLY - NOSE GEAR RETRACTOR - FIGURE 15

WIPLINE MODEL 3730-3900 FLOATS PARTS MANUAL

ASSEMBLY - NOSE GEAR RETRACTOR– FIGURE 15

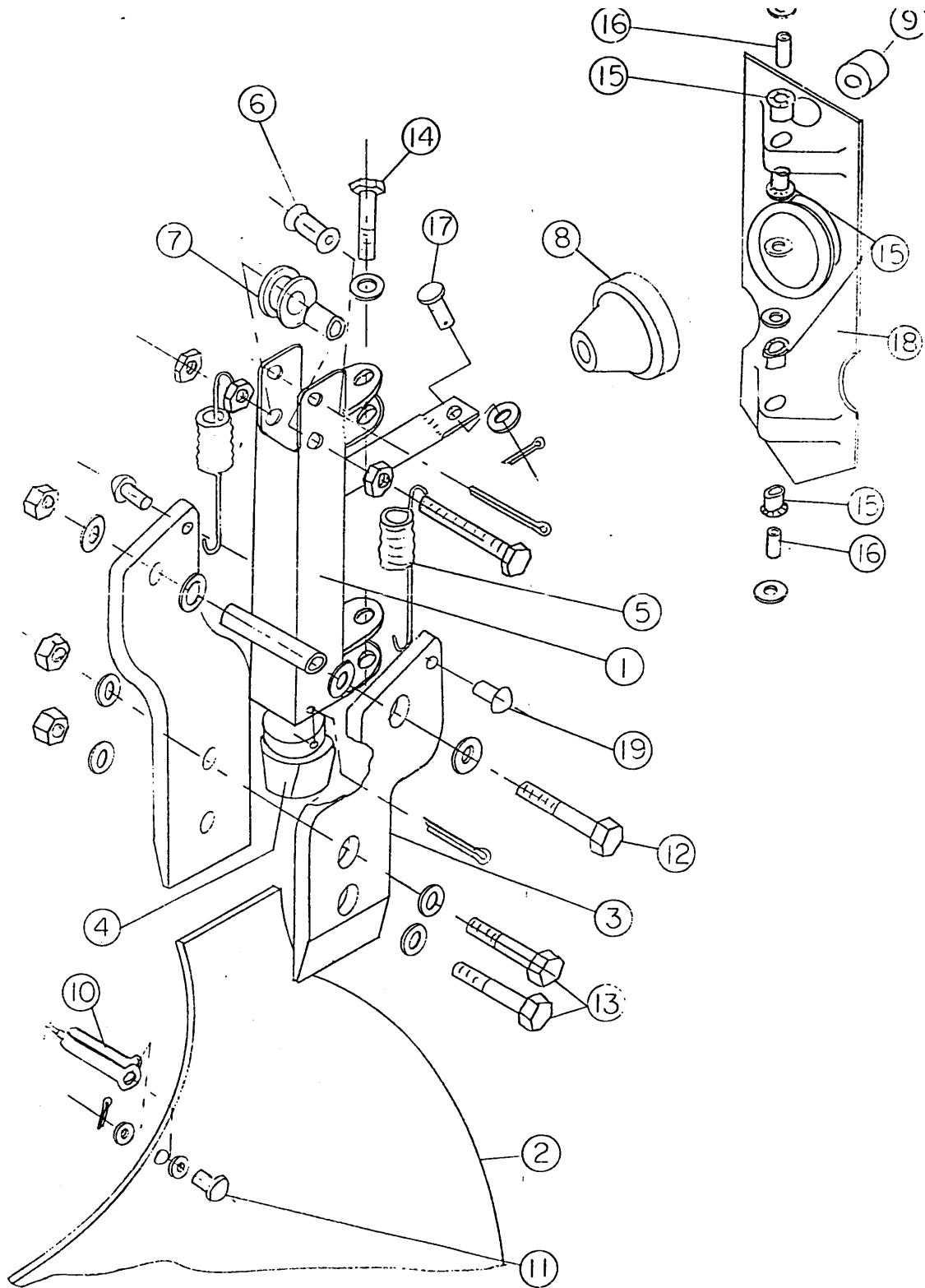
REF. NO.	NO. REQ.	<u>PART DESCRIPTION</u>	<u>PART NO.</u>
1	1	NOSE GEAR RETRACTION ASSEMBLY	3A07000-001
2	1	NOSE BOX	3A07343-001
3	1	TRACK-NOSE GEAR-LEFT	3A07349-001
4	1	TRACK-NOSE GEAR-RIGHT	3A07349-002
5	1	ANGLE MOUNTING	3A07359-006
6	1	CYLINDER-BODY-POWER	3A07402-002
7	2	AXLE-TROLLEY-LONG SHAFT	3A07509-001
8	1	TROLLEY-COUPLING	3A07032-001
9	1	LINK-PISTON ROD	3A07094-001
10	1	BODY-TROLLEY	3A07048-001
11	1	END-CYLINDER REAR	3A07089-005
	1	GROMMET (NOT SHOWN)	MS35489-23
12	1	AXLE-TROLLEY-SHORT SHAFT	3A07509-002
13	1	PLUNGER ASSEMBLY	3A07000-002
14	4	BEARING-BODY TROLLEY	3A07604-001
15	2	BEARING-TROLLEY COUPLING	3A07530-001
16	1	END-CYLINDER FRONT	3A07440-001
	2	SCREW (NOT SHOWN, BACK)	MS16997-44
	1	PLUG (NOT SHOWN, TOP)	AN932-2D
17	1	MAGNET	3A05701-001
18	2	SWITCH MOUNT	3A07002-027

WIPLINE MODEL 3730-3900 FLOATS PARTS MANUAL

ASSEMBLY - NOSE GEAR RETRACTOR – FIGURE 15

<u>REF. NO.</u>	<u>NO. REQ.</u>	<u>PART DESCRIPTION</u>	<u>PART NO.</u>
19	2	SWITCH	5801
20	4	SCREW-SWITCH ATTACH	AN515-4R5
21	2	SCREW	MS24694S-145
	4	BOLT	AN5-5A
22	6	BOLT	AN4-6A
	12	WASHER	NAS1149DO463J
	6	NUT	MS21044N4
23	1	BOLT	AN3-10A
	2	WASHER	NAS1149DO363J
	1	NUT	MS21044N3
24	8	SCREW	AN503-8-4
25	2	BOLT	AN4-50A
	4	WASHER	NAS1149DO463J
	2	NUT	MS21044N4
26	6	SCREW	AN526C1032-6
	6	WASHER	AN936A10
27	2	BOLT	MS20006-8
	2	WASHER	AN960PD616
	2	NUT	MS21044N6
28	1	"O" RING	MS28775-114
29	3	"O" RING	MS28775-216
30	2	SNAP RING	5100-46-H
31	1	SPACER-GASKET	3A07620-002

WIPLINE MODEL 3730-3900 FLOATS PARTS MANUAL



WATER RUDDER BLADE INSTALLATION – FIGURE 16

WIPLINE MODEL 3730-3900 FLOATS PARTS MANUAL

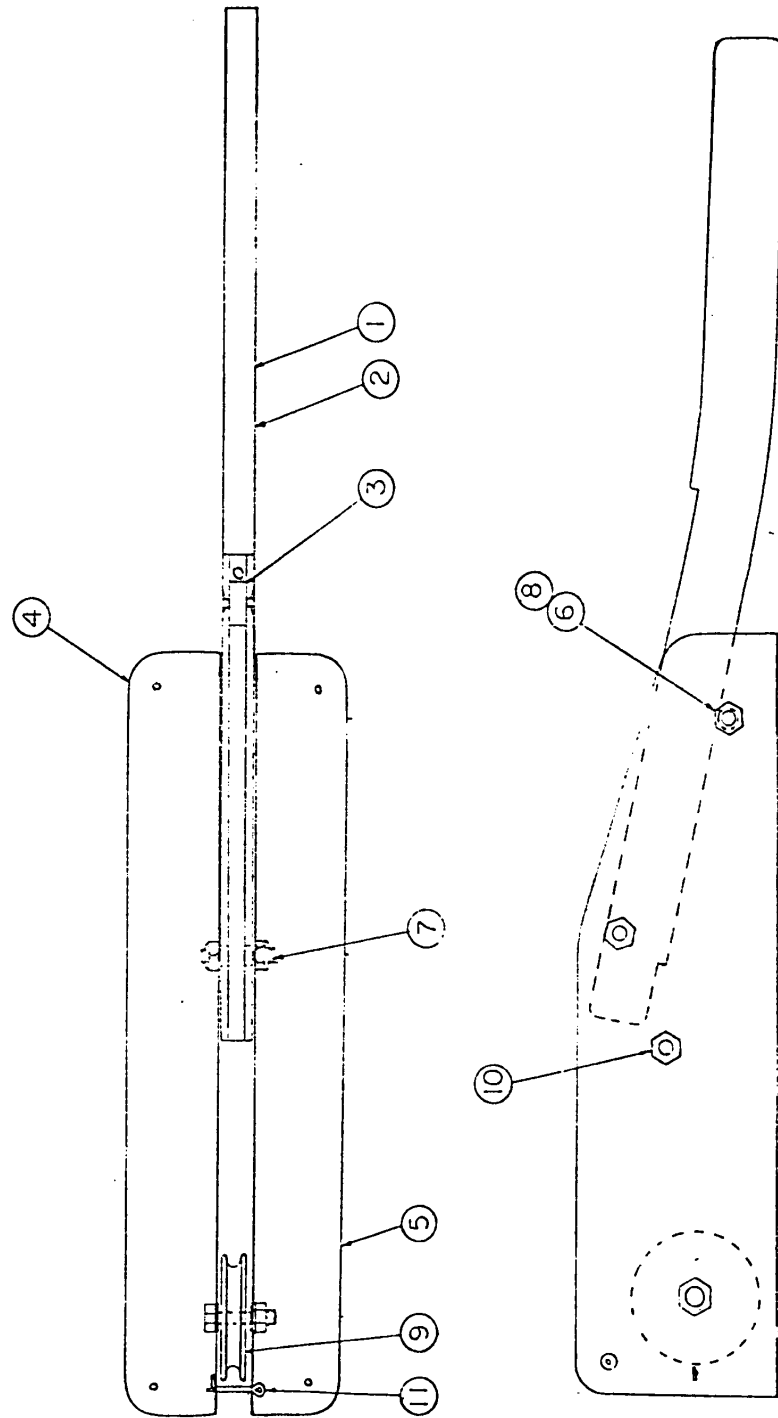
WATER RUDDER BLADE INSTALLATION – FIGURE 16

<u>REF. NO.</u>	<u>NO.</u>	<u>REQ.</u>	<u>PART DESCRIPTION</u>	<u>PART NO.</u>
	1	1	ASSEMBLY-WATER RUDDER PIVOT	3A08000-004
	2	1	BLADE-WATER RUDDER	3A08001-002
	3	1	ARM-WATER RUDDER LEFT	3A08197-003
		1	ARM-WATER RUDDER RIGHT	3A08197-004
	4	1	STOP-WATER RUDDER	6A08183-005
		1	PIN-COTTER	MS24665-306
	5	2	SPRING-RETRACT	3A08525-001
	6	1	ROLLER-RETRACT CABLE-TOP	6A08601-002
		1	PIN-COTTER	MS24665-306
	7	1	ROLLER-RETRACT CABLE CABLE-LOWER	3A08606-001
		1	BUSHING-ROLLER	3A08502-001
		1	BOLT-ROLLER-HEX. HEAD S.S.	1032X2 INCH SS
		3	NUT	NAS679A3W
	8	1	BOOT-WATER RUDDER	3A08650-001
	9	1	GUIDE-WATER RUDDER CABLE	3A08605-001
	10	1	FORK CABLE END	NAS1435K3
	11	1	CLEVIS PIN	AN392-2C11
		1	WASHER	AN960PD10
		1	PIN-COTTER	MS24665-132
	12	1	BOLT-WATER RUDDER HINGE	AN6C34A
		2	WASHER	NAS1149DO616J
		2	WASHER	NAS1149DO663J
		1	NUT	MS21044N6
	13	2	BOLT RUDDER TO ARM ATTACH	AN4-10A
		4	WASHER	NAS1149DO463J
		2	NUT	MS21044N6

WIPLINE MODEL 3730-3900 FLOATS PARTS MANUAL

WATER RUDDER BLADE INSTALLATION – FIGURE 16

<u>REF. NO.</u>	<u>NO.</u>	<u>PART DESCRIPTION</u>	<u>PART NO.</u>
14	2	BOLT-RUDDER POST HINGE	AN3-10A
	2	WASHER-LOCK	MS35333-39
15	4	NYLINER-HINGE	4L4F
16	2	BUSHING-SPACER-ROLLER	3A08502-002
17	1	PIN-CLEVIS	MS20392-2C11
	1	WASHER	NAS1149DO316J
	1	PIN-COTTER	MS24665-132
18	1	CASTING-WATER RUDDER	3A01437-001
19	2	PIN-SPRING	3A08702-005

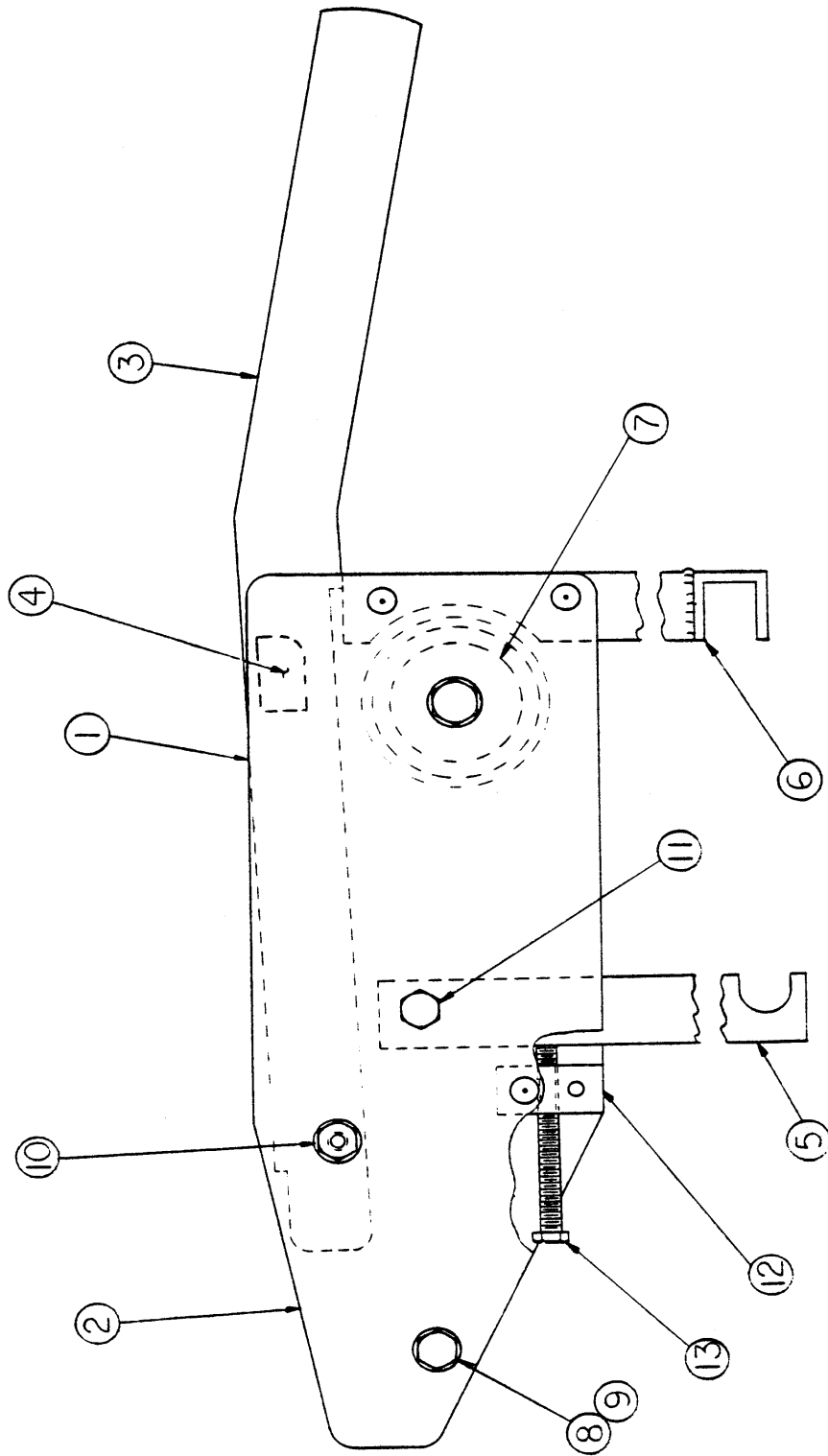


ASSEMBLY - WATER RUDDER HANDLE 206 – FIGURE 17

WIPLINE MODEL 3730-3900 FLOATS PARTS MANUAL

ASSEMBLY - WATER RUDDER HANDLE – FIGURE 17

<u>REF. NO.</u>	<u>NO.</u>	<u>REQ.</u>	<u>PART DESCRIPTION</u>	<u>PART NO.</u>
	1	1	ASSEMBLY-RETRACT HANDLE AND BRACKET	3A08000-005
	2	1	HANDLE	3A08414-001
	3	1	CABLE SAVER	3A08154-001
	4	1	BASE-RIGHT	3A08003-016
	5	1	BASE-LEFT	3A08003-015
	6	1	SPACER	3A08613-001
	7	2	BOLT-HANDLE HINGE	3A08702-006
		4	WASHER	NAS1149DO316J
		2	NUT	NAS679A3W
	8	1	BOLT-HANDLE STOP	AN3-10A
		2	WASHER	NAS1149DO316J
		1	NUT	MS21044N3
	9	1	PULLEY	MS20219-2
		1	BOLT-ATTACH	AN4-10A
		4	WASHER	NAS1149DO416J
		1	NUT	MS21044N4
	10	1	BOLT	AN3-10A
		2	WASHER	NAS1149DO416J
		1	NUT	MS21044N4
	11	1	COTTER-PIN	MS24665-302

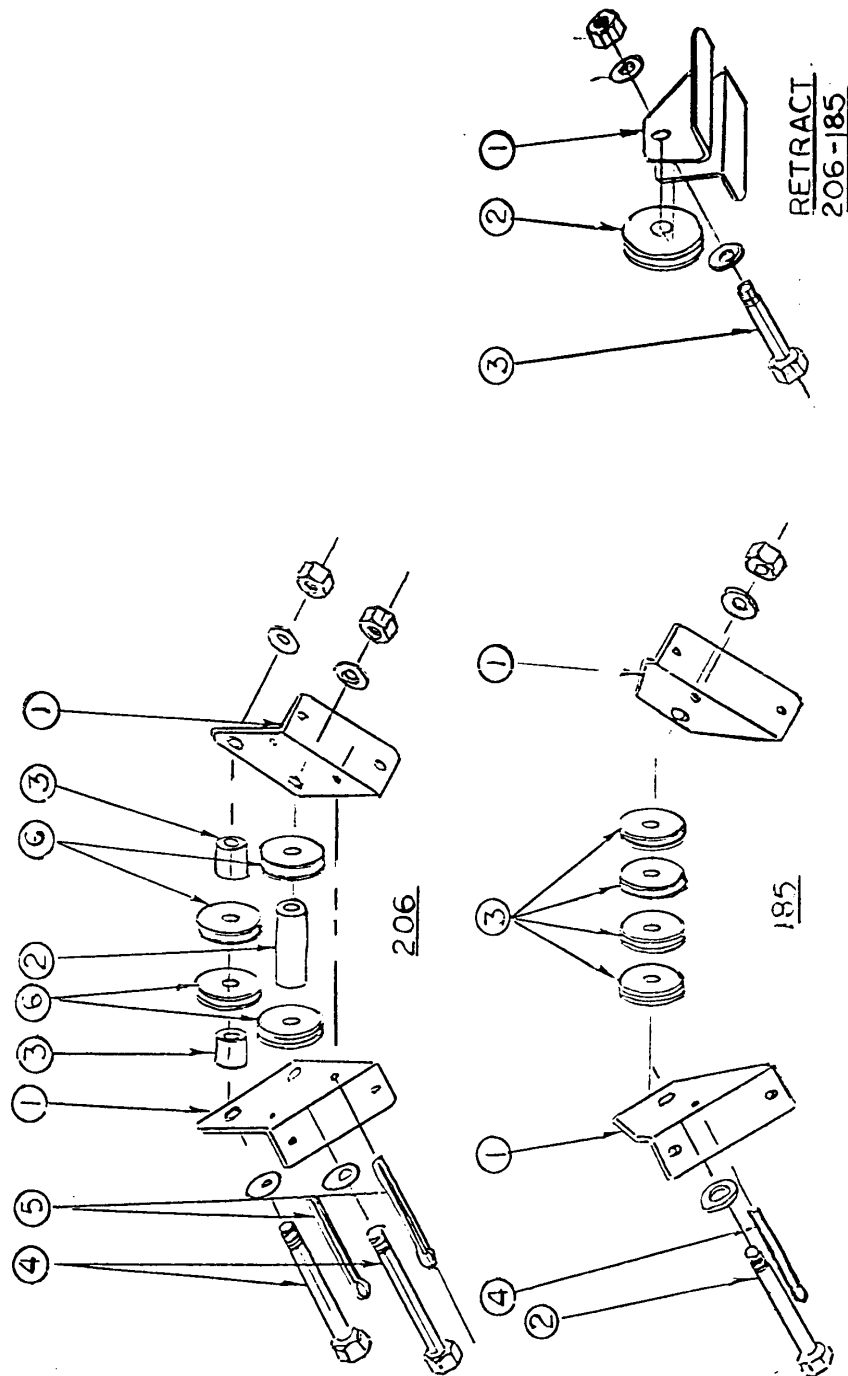


ASSEMBLY - WATER RUDDER HANDLE 185 – FIGURE 18

WIPLINE MODEL 3730-3900 FLOATS PARTS MANUAL

ASSEMBLY - WATER RUDDER HANDLE 185 – FIGURE 18

<u>REF. NO.</u>	<u>NO. REQ.</u>	<u>PART DESCRIPTION</u>	<u>PART NO.</u>
1	1	ASSEMBLY-RETRACT HANDLE AND BRACKET	3A08000-006
2	2	FRAME	3A08003-017
3	1	HANDLE	3A08414-001
4	1	CABLE SAVER	3A08154-001
5	1	LATCH	3A08415-001
6	1	CHANNEL ASSEMBLY	3A08000-007
7	1	PULLEY	MS20219-2B
	1	BOLT ATTACH	AN4-10A
	4	WASHER	NAS1149DO416J
	1	NUT	MS21044N4
8	1	SPACER	3A08613-001
9	1	BOLT-HANDLE STOP	AN3-10A
	2	WASHER	NAS1149DO316J
	1	NUT	MS21044N3
10	2	BOLT-HANDLE HINGE	3A08702-006
	4	WASHER	NAS1149DO316J
	2	NUT	MS21044N3
11	1	BOLT-LATCH	AN3-10A
	2	WASHER	NAS1149DO316J
	1	NUT	MS21044N3
12	1	BLOCK-TENSION ADJUSTING	3A08061-003
13	1	SCREW-ADJUSTING (HEX) S.S.	1032 X 2" SS

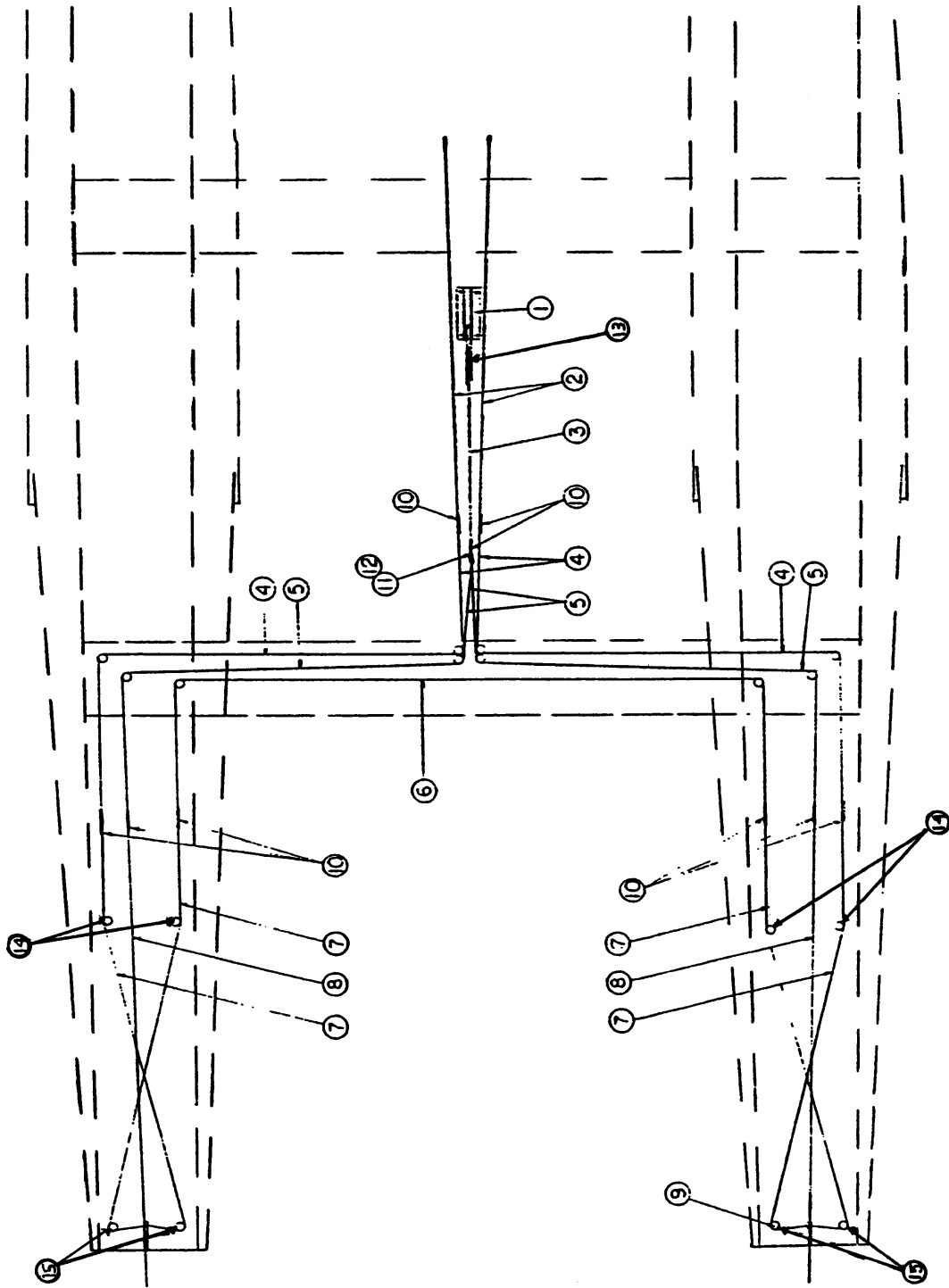


ASSEMBLY - PULLEY BRACKETS – FUSELAGE BELLY – FIGURE 19

WIPLINE MODEL 3730-3900 FLOATS PARTS MANUAL

ASSEMBLY - PULLEY BRACKETS – FUSELAGE BELLY – FIGURE 18

REF. NO.	NO. REQ.	<u>PART DESCRIPTION</u>	<u>PART NO.</u>
	1	PULEY BRACKET ASSEMBLY (206)	3A08000-055
1	2	BRACKET	3A08357-033
2	1	SPACER-LONG	3A08416-002
3	2	SPACER-SHORT	3A08416-001
4	2	BOLT	AN4-23A
	4	WASHER	NAS1149DO463J
	2	NUT	MS21044N4
5	2	COTTER PIN	MS24665-379
6	4	PULLEY	MS20219-2
	1	PULLEY BRACKET ASSEMBLY (185)	3A08000-056
7	2	BRACKET	3A08357-034
8	1	BOLT	AN4-23A
	2	WASHER	NAS1149DO463J
	1	NUT	MS21044N4
9	4	PULLEY	MS20219-2
	1	PULLEY BRACKET ASSEMBLY-RETRACT (206-185)	3A08000-057
10	1	BRACKET	3A08151-046
11	1	PULLEY	MS20219-2
12	1	BOLT	AN4-10A
	2	WASHER	NAS1149DO463J
	1	NUT	MS21044N4



CABLE SYSTEM 206 – FIGURE 20

WIPLINE MODEL 3730-3900 FLOATS PARTS MANUAL

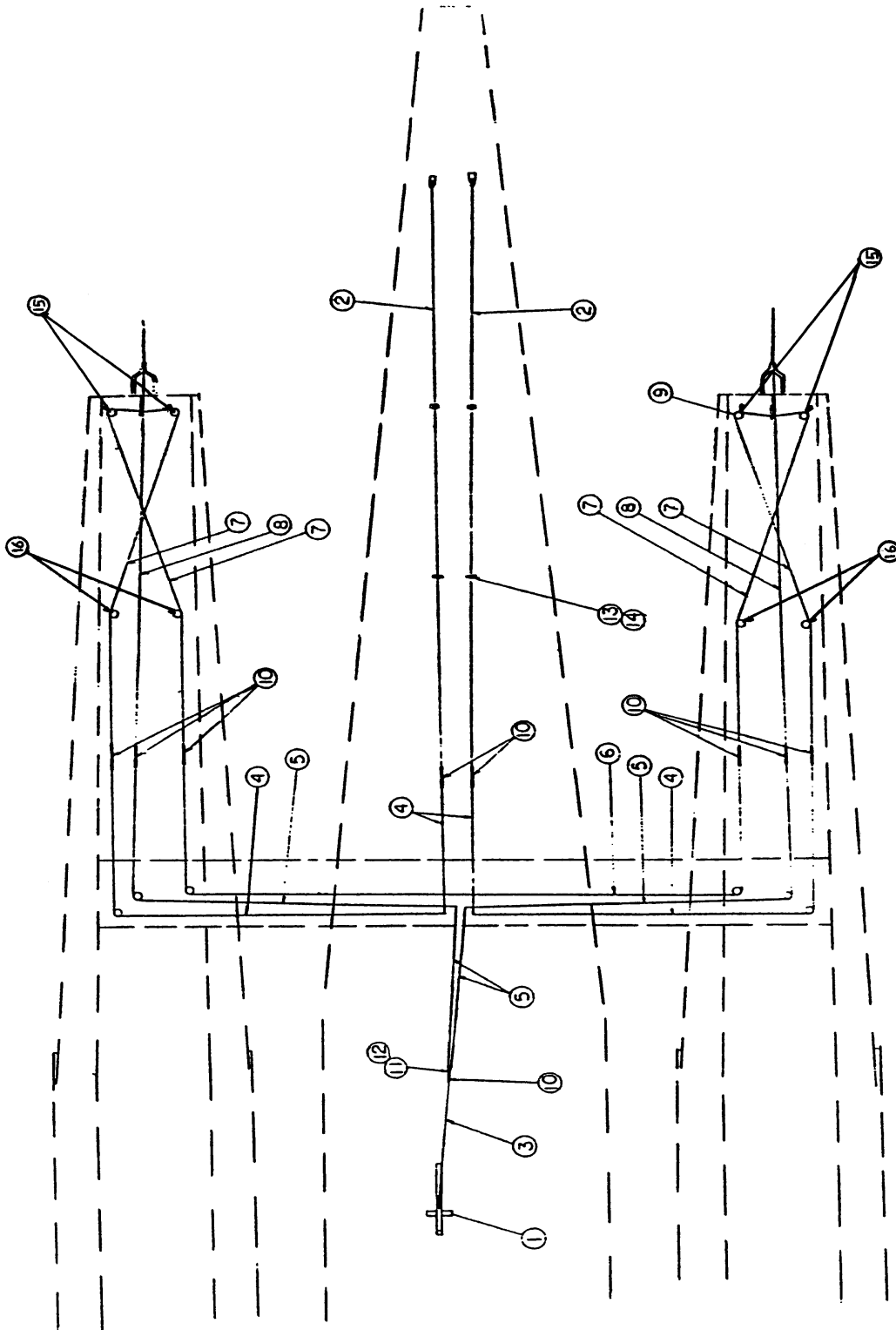
CABLE SYSTEM 206 – FIGURE 20

REF. NO.	NO. REQ.	<u>PART DESCRIPTION</u>	<u>PART NO.</u>
1	1	ASSEMBLY-WATER RUDDER RETRACTION	3A08000-005
2	2	ASSEMBLY-STEERING CABLE-BELLY	3A08000-002
	4	CABLE (7 X 19 MIL-C-5424)	3/32 X 41.5"
	4	BALL	MS20664C3
	4	FORK (MACWHYTE)	NAS1453KS
	4	CABLE END (L. HAND)	MS21260S3LH
3	1	ASSEMBLY-RETRACT CABLE-BELLY	3A08000-045
	1	CABLE (7 X 19 MIL-C-5424)	3/32 X 41.5"
	1	BALL	MS20664C3
	1	CABLE END (L. HAND)	MS21260S3LH
4	2	ASSEMBLY-STEERING CABLE- (SPREADER BAR)	3A08000-046
	4	CABLE (7 X 19 MIL-C-5424)	3/32 X 110.5
	8	CABLE END (R. HAND)	MS21260S3RH
5	2	ASSEMBLY-RETRACT CABLE (SPREADER BAR)	3A08000-047
	4	CABLE (7 X 19 MIL-C-5424)	3/32 X 110.5
	4	BALL	MS20664C3
	4	FORK (MACWHYTE)	NAS1453KS
	4	CABLE END (R. HAND)	MS21260S3LH
6	1	ASSEMBLY-BALANCE CABLE (SPREADER BAR)	3A08000-048
	1	CABLE (7 X 19 MIL-C-5424)	3/32 X 112.5
	2	CABLE END (R. HAND)	MS21260S3LH
7	4	ASSEMBLY-STEERING CABLE-FLOAT	3A08000-049
	8	CABLE (7 X 19 MIL-C-5424)	3/32 X 70.5
	8	BALL	MS20664C3
	8	FORK (MACWHYTE)	NAS1453KS
	8	CABLE END (L. HAND)	MS21260S3LH
8	2	ASSEMBLY-RETRACT CABLE-FLOAT	3A08000-050
	4	CABLE (7 X 19 MIL-C-5424)	3/32 X 75.5
	4	BALL	MS20664C3
	4	FORK (MACWHYTE)	NAS1453KS
	4	CABLE END	MS21260S3LH

WIPLINE MODEL 3730-3900 FLOATS PARTS MANUAL

CABLE SYSTEM 206 – FIGURE 20

<u>REF. NO.</u>	<u>NO. REQ.</u>	<u>PART DESCRIPTION</u>	<u>PART NO.</u>
9	1	PULLEY	MS20219-2
10	9	BARREL-TURNBUCKLE	MS21251B3S
11	1	BOLT-MODIFIED-RETRACT CABLE	MS21252-3RL
12	1	BOLT-RETRACT FORK ATTACH	AN3-4A
	1	NUT	NAS679-A3W
13	1	SPRING (CESSNA)	0742016-4
14	4	PULLEY BRKT.	3A01151-010
15	4	PULLEY BRKT.	3A01000-004



CABLE SYSTEM 185 – FIGURE 21

WIPLINE MODEL 3730-3900 FLOATS PARTS MANUAL

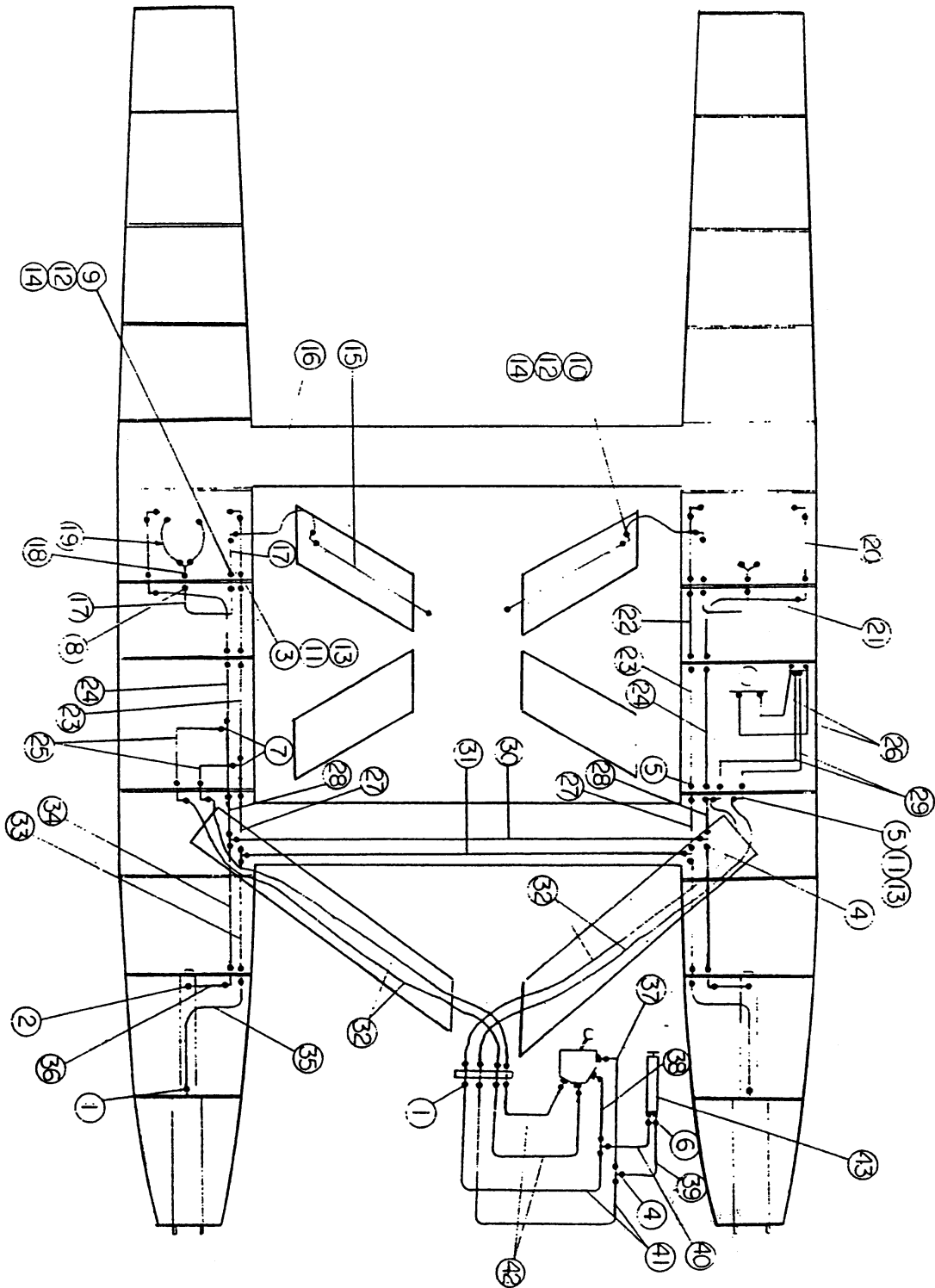
CABLE SYSTEM 185 – FIGURE 21

<u>REF. NO.</u>	<u>NO. REQ.</u>	<u>PART DESCRIPTION</u>	<u>PART NO.</u>
1	1	ASSEMBLY-WATER RUDDER RETRACTION	3A08000-006
2	2	ASSEMBLY-STEERING CABLE-BELLY	3A08000-001
	2	CABLE (7 X 19 MIL-C-5424)	3/32 X 114.75
	2	FORK (MACWHYTE)	NAS1453K3
	2	BALL	MS20664C3
	2	CABLE END (L. HAND)	MS21260S3LH
	4	CABLE GUIDES	6A08601-003
3	1	ASSEMBLY-RETRACT CABLE-BELLY	3A08000-051
	1	CABLE (7 X 19 MIL-C-5424)	3/32 X 48.63
	1	BALL	MS20664C3
	1	CABLE END (L. HAND)	MS21260S3LH
4	2	ASSEMBLY-STEERING CABLE (SPREADER BAR)	3A08000-046
	2	CABLE (7 X 19 MIL-C-5424)	3/32 X 110.5
	4	CABLE END (R. HAND)	MS21260S3LH
5	2	ASSEMBLY-RETRACT CABLE (SPREADER BAR)	3A08000-047
	2	CABLE (7 X 19 MIL-C-5424)	3/32 X 110.5
	2	BALL	MS20664C3
	2	FORK (MACWHYTE)	NAS1453K3
	2	CABLE END (R. HAND)	MS21260S3LH
6	1	ASSEMBLY-BALANCE CABLE (SPREADER BAR)	3A08000-048
	1	CABLE (7 X 19 MIL-C-5424)	3/32 X 112.5
	2	CABLE END (R. HAND)	MS21260S3LH
7	4	ASSEMBLY-STEERING CABLE-FLOAT	3A08000-049
	4	CABLE (7 X 19 MIL-C-5424)	3/32 X 70.5
	4	BALL	MS20664C3
	4	FORK (MACWHYTE)	NAS1453K3
	4	CABLE END (L. HAND)	MS21260S3LH
8	2	ASSEMBLY-BALANCE CABLE FLOAT	3A08000-050
	2	CABLE (7 X 19 MIL-C-5424)	3/32 X 75.5
	2	BALL	MS20664C3
	2	FORK (MACWHYTE)	NAS1453K3
	2	CABLE END (L. HAND)	MS21260S3LH

WIPLINE MODEL 3730-3900 FLOATS PARTS MANUAL

CABLE SYSTEM 185 – FIGURE 21

<u>REF. NO.</u>	<u>NO.</u>	<u>REQ.</u>	<u>PART DESCRIPTION</u>	<u>PART NO.</u>
9	1	1	PULLEY	MS20219-2B
10	9	1	BARREL-TURNBUCKLE	MS2125183S
11	1	1	BOLT-MODIFIED-RETRACT CABLE	MS21252-3RL
12	1	1	BOLT-RETRACT FORK ATTACH	AN3-4A
	1	1	NUT	NAS679-A3W
13	4	1	HOLDER-CABLE GUIDE	3A08003-018
14	8	1	RIVNUT	A6-75
	8	1	SCREW-HOLDER ATTACH	AN526-632R12
	8	1	WASHER-LOCK	MS35333-37
	8	1	CABLE GUIDE	3A08605-001
15	4	1	PULLEY BRKT.	3A01000-004
16	4	1	PULLEY BRKT.	3A01151-010



HYDRAULIC SYSTEM – 206 – FIGURE 22

WIPLINE MODEL 3730-3900 FLOATS PARTS MANUAL

HYDRAULIC SYSTEM 206 – FIGURE 22

REF. NO.	NO. REQ.	<u>PART DESCRIPTION</u>	<u>PART NO.</u>
1	10	FITTING-(#4 FLARE TO 1/8" PIPE)	AN816-4D
2	7	FITTING (#4 `90 ' FLARE TO 1/8 PIPE)	MS20822-4D
3	10	FITTING (#4 STRAIGHT BULKHEAD)	AN832-4D
4	6	FITTING (#4 FLARED TEE)	AN824-4D
5	16	FITTING (#4 `90 ' BULKHEAD ELBOW)	AN833-4D
6	7	FITTING (#4 `45 ' FLARE TO 1/8 PIPE)	MS20823-4D
7	2	FITTING (#4 BULKHEAD TEE)	AN804-4D
8	2	FITTING (#3 FLARE TO 1/8 PIPE)	AN816-3D
9	2	FITTING (#3 STRAIGHT BULKHEAD)	AN832-3D
10	4	FITTING (#3 `90 ' BULKHEAD ELBOW)	AN833-3D
11	36	WASHER (#4 BULKHEAD FITTINGS)	NAS1149DO763J
12	26	WASHER (#3 BULKHEAD FITTINGS)	NAS1149DO663J
13	26	NUT (#4 BULKHEAD FITTINGS)	AN924-4D
14	6	NUT (#3 BULKHEAD FITTINGS)	AN924-3D
15	2	ASSEMBLY-BRAKE LINE-(REAR STRUT)	3A04000-008
	4	NUT	AN818-3D
	4	SLEEVE	AN819-3D
	2	LINE (ALUMINUM)	.035 X 3/16 X 42"
16	2	ASSEMBLY-BRAKE LINE-(R. STRUT TO DECK)	3A04000-010
	4	NUT	AN818-3D
	4	SLEEVE	AN819-3D
	2	LINE (ALUMINUM)	.035 X 3/16 X 8"

WIPLINE MODEL 3730-3900 FLOATS PARTS MANUAL

HYDRAULIC SYSTEM 206 – FIGURE 22

REF. NO.	NO. REQ.	<u>PART DESCRIPTION</u>	<u>PART NO.</u>
17	4	ASSEMBLY-BRAKE LINE	3A04000-006
	8	NUT	AN818-3D
	8	SLEEVE	MS20819-3D
	4	LINE (ALUMINUM)	.035 X 3/16 X 22"
18	2	ASSEMBLY-FITTING-BRAKE LINE-WHEEL WELL	3A04000-005
19	4	ASSEMBLY-BRAKE LINE-AEROQUIP (10.5")	3A04000-011
	8	FITTING-AEROQUIP	63-190600-4
	4	LINE-AEROQUIP	2807-4
20	4	ASSEMBLY-LINE-CYL. TO BULKHEAD (20.25")	3A09000-006
	8	NUT	AN818-4D
	8	SLEEVE	MS20819-4D
	4	LINE (ALUMINUM)	.035 X 1/4 X 20.20"
21	2	ASSEMBLY-LINE-BULK'HD TO BULK'HD (20.88")	3A09000-007
	4	NUT	AN818-4D
	4	SLEEVE	MS20819-4D
	2	LINE (ALUMINUM)	.035 X 1/4 X 20.88"
22	2	ASSEMBLY-LINE-BULK'HD TO BULK'HD (12.5")	3A09000-005
	4	NUT	AN818-4D
	4	SLEEVE	MS20819-4D
	2	LINE (ALUMINUM)	.035 X 1/4 X 12.5"
23	2	ASSEMBLY-LINE-BULK'HD TO BULK'HD (27")	3A09000-009
	4	NUT	AN818-4D
	4	SLEEVE	MS20819-4D
	2	LINE (ALUMINUM)	.035 X 1/4 X 27"
24	2	ASSEMBLY-LINE-BULK'HD TO BULK'HD (28")	3A09000-010
	4	NUT	AN818-4D
	4	SLEEVE	MS20819-4D
	2	LINE (ALUMINUM)	.035 X 1/4 X 28"

WIPLINE MODEL 3730-3900 FLOATS PARTS MANUAL

HYDRAULIC SYSTEM 206 – FIGURE 22

REF. NO.	NO. REQ.	<u>PART DESCRIPTION</u>	<u>PART NO.</u>
25	2	ASSEMBLY-LINE-TEE TO DECK FITTING (10")	3A09000-004
	4	NUT	AN818-4D
	4	SLEEVE	MS20819-4D
	2	LINE (ALUMINUM)	.035 X 1/4 X 10"
26	2	ASSEMBLY-LINE-PUMP TO CHECK VALVE (14.5")	3A09000-018
	4	FITTING-AEROQUIP	63-190600-4
	2	LINE-AEROQUIP (14.5")	2807-4
27	2	ASSEMBLY-LINE-BULKHEAD TO TEE (2.63")	3A09000-001
	4	NUT	AN818-4D
	4	SLEEVE	MS20819-4D
	2	LINE (ALUMINUM)	.035 X 1/4 X 2.63"
28	2	ASSEMBLY-LINE-BULKHEAD TO TEE (3.88")	3A09000-002
	4	NUT	AN818-4D
	4	SLEEVE	MS20819-4D
	2	LINE (ALUMINUM)	.035 X 1/4 X 3.88"
29	2	ASSEMBLY-LINE-CHECK VALVE TO F. DECK (26")	3A09000-021
	4	FITTING-AEROQUIP	63-190600-4
	2	LINE-AEROQUIP (26")	2807-4
30	1	ASSEMBLY-LINE-SPREADER BAR (94")	3A09000-052
	2	NUT	AN818-4D
	2	SLEEVE	MS20819-4D
	1	LINE (ALUMINUM)	.035 X 1/4 X 94"
	1	TUBE-P.V.C. (SHRINK)	1/4 X 90"
31	1	ASSEMBLY-LINE-SPREADER BAR (92")	3A09000-053
	2	NUT	AN818-4D
	2	SLEEVE	MS20819-4D
	1	LINE (ALUMINUM)	.035 X 1/4 X 92"
	1	TUBE-P.V.C. (SHRINK)	1/4 X 90"
32	4	ASSEMBLY-LINE-FRONT STRUT (64")	3A09000-023
	8	FITTING-AEROQUIP	63-190600-4
	4	LINE-AEROQUIP (64")	2807-4

WIPLINE MODEL 3730-3900 FLOATS PARTS MANUAL

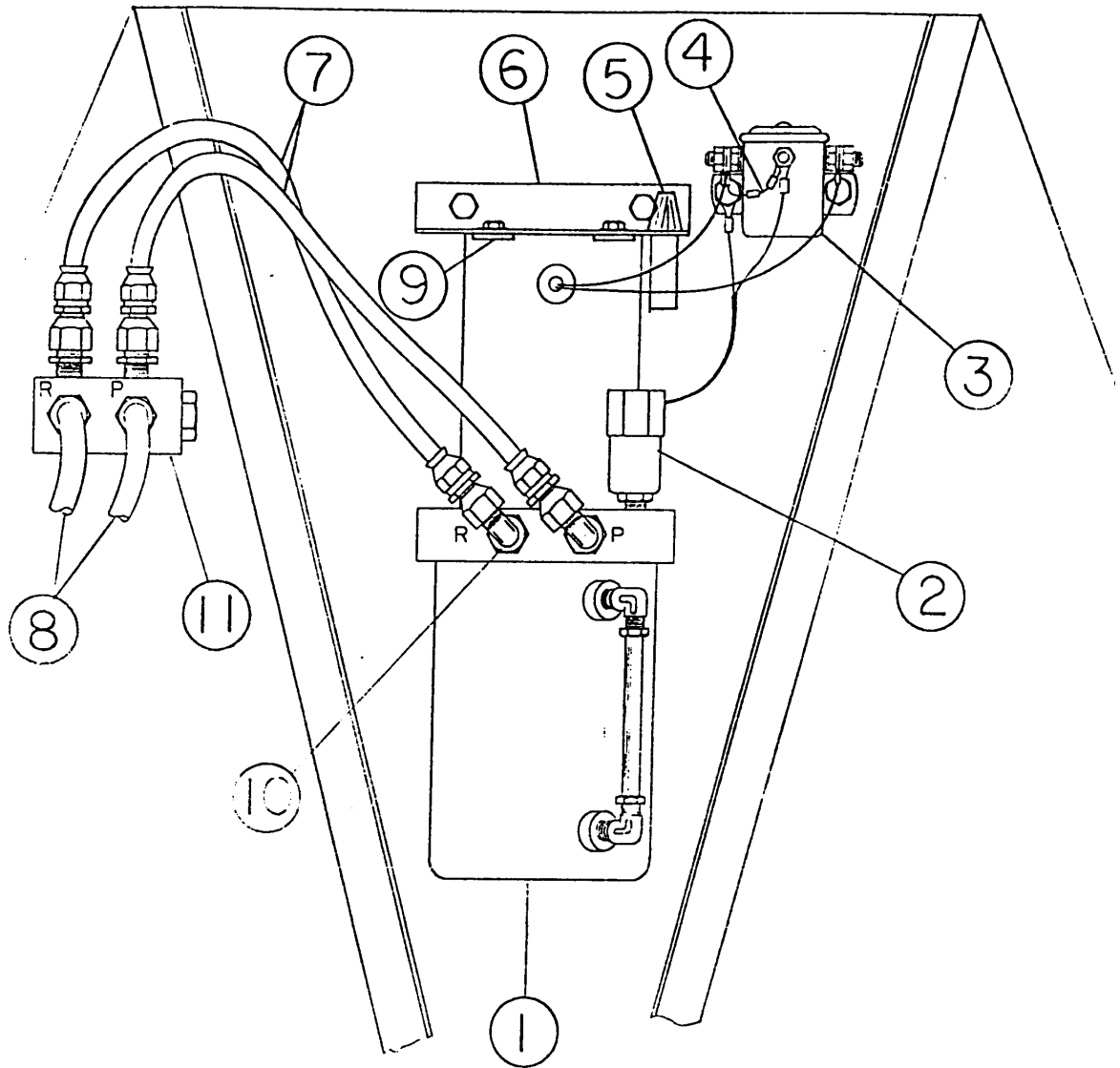
HYDRAULIC SYSTEM 206 – FIGURE 22

REF. NO.	NO. REQ.	<u>PART DESCRIPTION</u>	<u>PART NO.</u>
33	2	ASSEMBLY-LINE-TEE TO BULKHEAD (27")	3A09000-009
	4	NUT	AN818-4D
	4	SLEEVE	MS208194D
	2	LINE (ALUMINUM)	.035 X 1/4 X 27"
34	2	ASSEMBLY-LINE-TEE TO BULKHEAD (26")	3A09000-008
	4	NUT	AN818-4D
	4	SLEEVE	MS208194D
	2	LINE (ALUMINUM)	.035 X 1/4 X 26"
35	2	ASSEMBLY-LINE-BULKHEAD TO F. CYL, (27")	3A09000-009
	4	NUT	AN818-4D
	4	SLEEVE	MS208194D
	2	LINE (ALUMINUM)	.035 X 1/4 X 27"
36	2	ASSEMBLY-LINE-BULKHEAD TO R. CYL, (10")	3A09000-004
	4	NUT	AN818-4D
	4	SLEEVE	MS208194D
	2	LINE (ALUMINUM)	.035 X 1/4 X 10"
37	1	ASSEMBLY-LINE-VALVE TO TEE (18.5")	3A09000-012
	1	FITTING-AEROQUIP	63-190600-4
	1	FITTING-AEROQUIP (90)	190772-4S
	1	LINE-AEROQUIP (18.5")	2807-4
38	1	ASSEMBLY-LINE-VALVE TO TEE (17")	3A09000-013
	1	FITTING-AEROQUIP	63-190600-4
	1	FITTING-AEROQUIP (45)	190773-4S
	1	LINE-AEROQUIP (17")	2807-4
39	1	ASSEMBLY-LINE-HAND PUMP TO TEE (22")	3A09000-015
	2	FITTING-AEROQUIP	63-190600-4
	1	LINE-AEROQUIP (22")	2807-4
40	1	ASSEMBLY-LINE-HAND PUMP TO TEE (21")	3A09000-014
	2	FITTING-AEROQUIP	63-190600-4
	1	LINE-AEROQUIP (21")	2807-4

WIPLINE MODEL 3730-3900 FLOATS PARTS MANUAL

HYDRAULIC SYSTEM 206 – FIGURE 22

REF. NO.	NO. REQ.	<u>PART DESCRIPTION</u>	<u>PART NO.</u>
41	2	ASSEMBLY-LINE-TEE TO SUPPORT (28")	3A09000-016
	4	FITTING-AEROQUIP	63-190600-4
	2	LINE-AEROQUIP (28")	2807-4
42	2	ASSEMBLY-LINE-VALVE TO SUPPORT (45")	3A09000-017
	4	FITTING-AEROQUIP	63-190600-4
	2	LINE-AEROQUIP (45")	2807-4
43	1	ASSEMBLY-EMERGENCY HAND PUMP	631875
	1	PLATE-MOUNTING-HAND PUMP	3A09190-001
44	2	ASSY. – RETRACTOR PUMP (12") NOT PICTURED	3A09000-019
	2	ASSY. – RETRACTOR PUMP (9") NOT PICTURED	3A09000-020
45	2	ASSY. PUMP TO DECK (34") NOT PICTURED (W/O EXTERNAL RELIEF VALVE)	3A09000-118



HYDRAULIC PUMP INSTALLATION – FIGURE 23

WIPLINE MODEL 3730-3900 FLOATS PARTS MANUAL

HYDRAULIC PUMP INSTALLATION – FIGURE 23

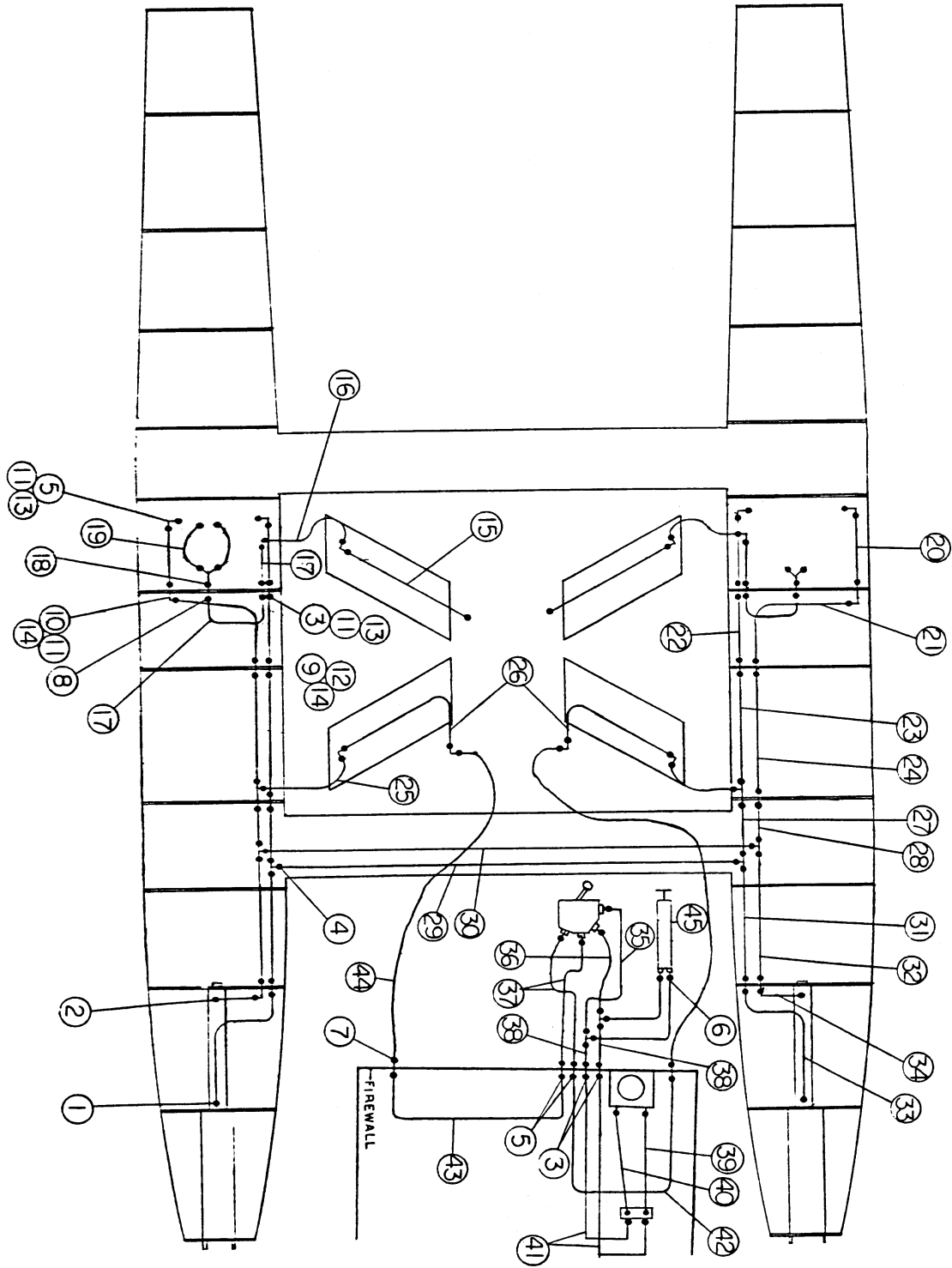
REF. NO.	NO. REQ.	<u>PART DESCRIPTION</u>	<u>PART NO.</u>
1	1	ASSEMBLY-MOTOR AND PUMP (24V)	3A09000-026
2	1	PRESSURE SWITCH (1000 PSI)	GPP1250-23
3	1	SOLENOID (24V)	S1580A1
	1	SOLENOID (12V)	S1579A2
	2	BOLT-ATTACH	AN4-5A
	4	WASHER	NAS1149FO636P
	2	NUT	MS21044N4
4	1	ASSEMBLY-DIODE	3A1000-002
5	1	FUSEHOLDER	
	1	FUSE	AGS 1/2
6	1	BRACKET-MOTOR MOUNT	3A09005-023
	2	BOLT-ATTACH	AN4-5A
	4	WASHER	NAS1149FO463P
	2	NUT	MS21044N4
7	2	ASSEMBLY-LINE-PUMP TO CHECK VALVE (14.5")	3A09000-018
	4	FITTING-AEROQUIP	63-190600-4
	2	LINE-AEROQUIP (14.5")	2807-4
8	2	ASSEMBLY-LINE-CHECK VALVE TO TOP DECK (26")	3A09000-021
	4	FITTING-AEROQUIP	63-190600-4
	2	LINE-AEROQUIP (26")	2807-4
9	2	SPACER-MOTOR AND BRACKET	6A11274-002
10	2	FITTING	AN833-4D
	2	WASHER	NAS1149DO763J
	2	NUT	AN924-4D

WIPLINE MODEL 3730-3900 FLOATS PARTS MANUAL

HYDRAULIC PUMP INSTALLATION – FIGURE 23

<u>REF. NO.</u>	<u>NO.</u>	<u>REQ.</u>	<u>PART DESCRIPTION</u>	<u>PART NO.</u>
11	1		ASSEMBLY-RELIEF VALVE	3A09000-022
	1		MANIFOLD	3A09214-001
	1		HOLDER- SPRING-PRESSURE RELIEF	3A09258-002
	1		ASSEMBLY-RELIEF VALVE (OILDYNE)	928
	1		SPRING	410505-0
	1		SEAT	362195
	1		PLUNGER	361239
	1		"O" RING	4140494
	1		"O" RING	401273
	2		NIPPLE	AN816-4D
	2		NIPPLE	AN816-4-4D
	2		PLUG	AN932D3
	2		SCREW-ATTACH	AN526-1032R6
	2		WASHER	AN936-A10

WIPLINE MODEL 3730-3900 FLOATS PARTS MANUAL



HYDRAULIC SYSTEM 185 – FIGURE 24

WIPLINE MODEL 3730-3900 FLOATS PARTS MANUAL

HYDRAULIC SYSTEM 185 – FIGURE 24

REF. NO.	NO. REQ.	<u>PART DESCRIPTION</u>	<u>PART NO.</u>
1	10	FITTING (#4 FLARE TO 1/8" PIPE)	AN816-4D
2	7	FITTING (#4 `90 ' FLARE TO 1/8" PIPE)	MS20822-4D
3	10	FITTING (#4 STRAIGHT BULKHEAD)	AN832-4D
4	6	FITTING (#4 FLARED TEE)	AN824-4D
5	16	FITTING (#4 `90 ' BULKHEAD ELBOW)	AN833-4D
6	7	FITTING (#4 `45 ' FLARED TO 1/8" PIPE)	MS20823-4D
7	2	FITTING (#4 BULKHEAD TEE)	AN804-4D
8	2	FITTING (#3 FLARE TO 1/8" PIPE)	AN816-3D
9	2	FITTING (#3 STRAIGHT BULKHEAD)	AN832-3D
10	4	FITTING (#3 `90 ' BULKHEAD ELBOW)	AN833-3D
11	36	WASHER (#4 BULKHEAD FITTING)	NAS1149DO763J
12	26	WASHER (#3 BULKHEAD FITTING)	NAS1149DO663J
13	26	NUT (#4 BULKHEAD FITTING)	AN924-4D
14	6	NUT (#3 BULKHEAD FITTING)	AN924-3D
15	2	ASSEMBLY-BRAKE LINE-REAR STRUT (68")	3A04000-007
	4	NUT	AN818-3D
	4	SLEEVE	AN819-3D
	2	LINE (ALUMINUM)	.035 X 3/16 X 68"
16	2	ASSEMBLY-BRAKE LINE (4.5") R. STRUT TO DECK	3A04000-009
	4	NUT	AN818-3D
	4	SLEEVE	AN819-3D
	2	LINE (ALUMINUM)	.035 X 3/16 X 4.5"

WIPLINE MODEL 3730-3900 FLOATS PARTS MANUAL

HYDRAULIC SYSTEM 185 – FIGURE 24

REF. NO.	NO. REQ.	<u>PART DESCRIPTION</u>	<u>PART NO.</u>
17	4	ASSEMBLY- BRAKE LINE	3A04000-006
	8	NUT	AN818-3D
	8	SLEEVE	MS20819-4D
	4	LINE (ALUMINUM)	.035 X 3/16 X 22"
18	2	ASSEMBLY-FITTING-BRAKE LINE-WHEEL WELL	3A04000-005
19	4	ASSEMBLY- BRAKE LINE-AEROQUIP (10.5")	3A04000-011
	8	FITTING (AEROQUIP)	63-190600-4
	4	LINE (AEROQUIP) (10.5)	2807-4
20	4	ASSEMBLY LINE-CYLINDER TO BULKHEAD (20.25")	3A09000-006
	8	NUT	AN818-4D
	8	SLEEVE	MS20819-4D
	4	LINE (ALUMINUM)	.035 X 1/4 X 20.25"
21	2	ASSEMBLY LINE-BULKHEAD TO BULKHEAD (20.88")	3A09000-007
	4	NUT	AN818-4D
	4	SLEEVE	MS20819-4D
	2	LINE (ALUMINUM)	.035 X 1/4 X 20.88"
22	2	ASSEMBLY LINE-BULKHEAD TO BULKHEAD (12.5")	3A09000-005
	4	NUT	AN818-4D
	4	SLEEVE	MS20819-4D
	2	LINE (ALUMINUM)	.035 X 1/4 X 12.5"
23	2	ASSEMBLY LINE-BULKHEAD TO BULKHEAD (27")	3A09000-009
	4	NUT	AN818-4D
	4	SLEEVE	MS20819-4D
	2	LINE (ALUMINUM)	.035 X 1/4 X 27"
24	2	ASSEMBLY LINE-BULKHEAD TO BULKHEAD (28")	3A09000-010
	4	NUT	AN818-4D
	4	SLEEVE	MS20819-4D
	2	LINE (ALUMINUM)	.035 X 1/4 X 28"
25	2	ASSEMBLY LINE-ELBOW TO DECK FITTING (5.5")	3A09000-003
	4	NUT	AN818-4D
	4	SLEEVE	MS20819-4D
	2	LINE (ALUMINUM)	.035 X 1/4 X 5.5"

WIPLINE MODEL 3730-3900 FLOATS PARTS MANUAL

HYDRAULIC SYSTEM 185 – FIGURE 24

REF. NO.	NO. REQ.	<u>PART DESCRIPTION</u>	<u>PART NO.</u>
26	2	ASSEMBLY LINE-FRONT STRUT (42")	3A09000-011
	4	NUT	AN818-4D
	4	SLEEVE	MS20819-4D
	2	LINE (ALUMINUM)	.035 X 1/4 X 42"
27	2	ASSEMBLY LINE-BULKHEAD TO TEE (2.63")	3A09000-001
	4	NUT	AN818-4D
	4	SLEEVE	MS20819-4D
	2	LINE (ALUMINUM)	.035 X 1/4 X 2.63"
28	2	ASSEMBLY LINE-BULKHEAD TO TEE (3.88")	3A09000-002
	4	NUT	AN818-4D
	4	SLEEVE	MS20819-4D
	2	LINE (ALUMINUM)	.035 X 1/4 X 3.88"
29	1	ASSEMBLY LINE-SPREADER BAR (94")	3A09000-052
	2	NUT	AN818-4D
	2	SLEEVE	MS20819-4D
	1	LINE (ALUMINUM)	.035 X 1/4 X 3.88"
	1	TUBE-P.V.C (SHRINK)	1/4" X 90"
30	1	ASSEMBLY LINE-SPREADER BAR (92")	3A09000-053
	2	NUT	AN818-4D
	2	SLEEVE	MS20819-4D
	1	LINE (ALUMINUM)	.035 X 1/4 X 92"
	1	TUBE-P.V.C (SHRINK)	1/4" X 90"
31	2	ASSEMBLY LINE-TEE TO BULKHEAD (27")	3A09000-009
	4	NUT	AN818-4D
	4	SLEEVE	MS20819-4D
	2	LINE (ALUMINUM)	.035 X 1/4 X 27"
32	2	ASSEMBLY LINE-TEE TO BULKHEAD (26")	3A09000-008
	4	NUT	AN818-4D
	4	SLEEVE	MS20819-4D
	2	LINE (ALUMINUM)	.035 X 1/4 X 26"

WIPLINE MODEL 3730-3900 FLOATS PARTS MANUAL

HYDRAULIC SYSTEM 185 – FIGURE 24

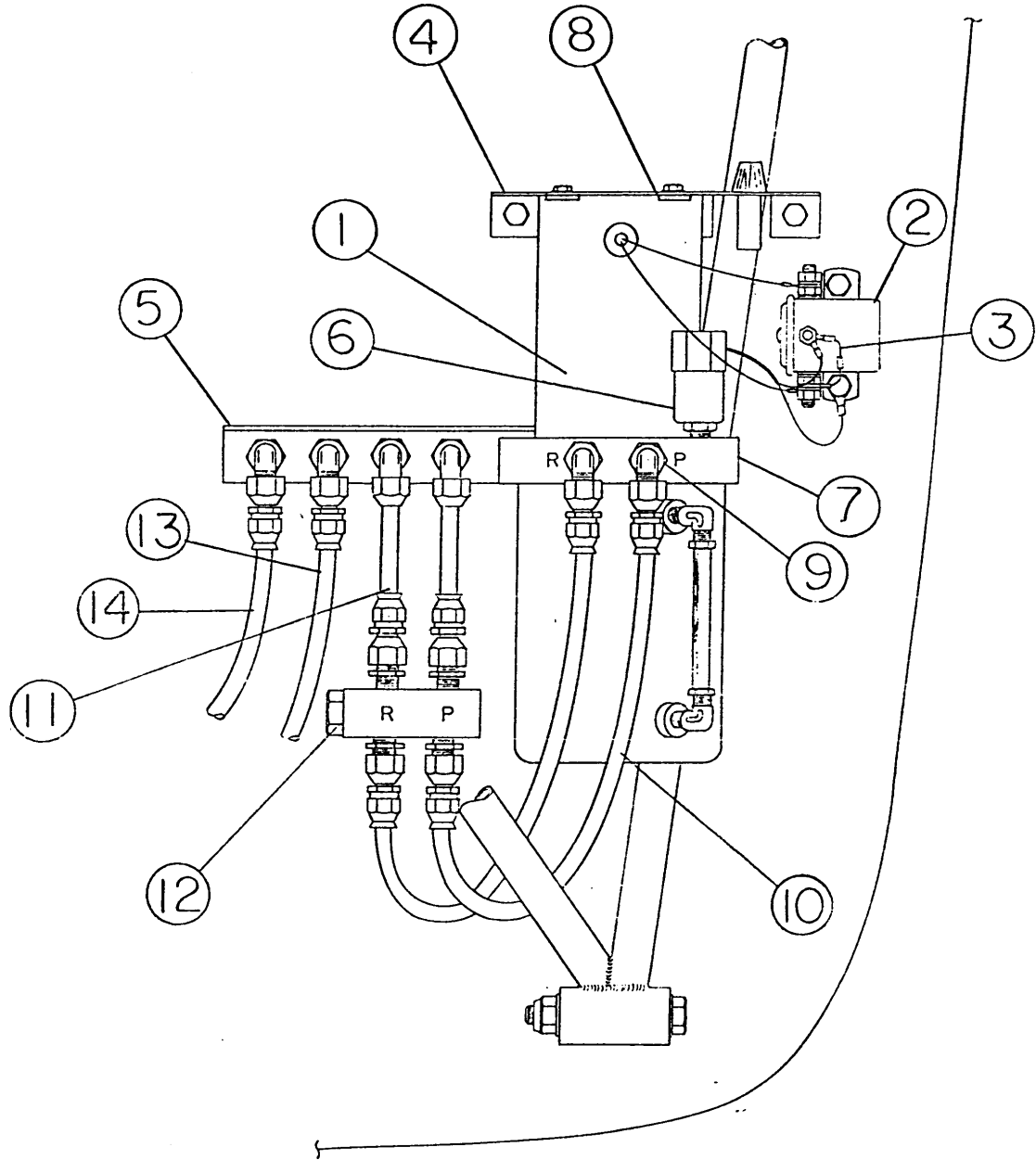
REF. NO.	NO. REQ.	<u>PART DESCRIPTION</u>	<u>PART NO.</u>
33	2	ASSEMBLY LINE-BULKHEAD TO FRONT CYL. (27")	3A09000-009
	4	NUT	AN818-4D
	4	SLEEVE	MS20819-4D
	2	LINE (ALUMINUM)	.035 X 1/4 X 27"
34	2	ASSEMBLY LINE-BULKHEAD TO RIGHT CYL. (10")	3A09000-004
	4	NUT	AN818-4D
	4	SLEEVE	MS20819-4D
	2	LINE (ALUMINUM)	.035 X 1/4 X 10"
35	1	ASSEMBLY LINE-VALVE TO TEE (20")	3A09000-054
	1	FITTING-(AEROQUIP)	63-190600-4
	1	FITTING-(AEROQUIP) `90 '	190772-4S
	1	LINE (AEROQUIP) (20")	2807-4
36	1	ASSEMBLY LINE-VALVE TO TEE (18.5")	3A09000-055
	1	FITTING-(AEROQUIP)	63-190600-4
	1	FITTING-(AEROQUIP) `45 '	190773-4S
	1	LINE (AEROQUIP) (18.5")	2807-4
37	2	ASSEMBLY LINE-VALVE TO FIREWALL (32")	3A09000-056
	2	FITTING-(AEROQUIP)	63-190600-4
	2	FITTING (AEROQUIP) `45 '	190773-4S
	2	LINE (AEROQUIP) (32")	2807-4
38	2	ASSEMBLY LINE-TEE TO FIREWALL (12")	3A09000-057
	2	FITTING-(AEROQUIP)	63-190600-4
	2	FITTING-(AEROQUIP)	190773-4S
	2	LINE (AEROQUIP) (12")	2807-4
39	1	ASSEMBLY-LINE-PUMP TO CHECK VALVE (8")	3A09000-058
	1	FITTING-(AEROQUIP)	63-190600-4
	1	FITTING-(AEROQUIP) `45 '	190773-4S
	1	LINE (AEROQUIP) (8")	2807-4

WIPLINE MODEL 3730-3900 FLOATS PARTS MANUAL

HYDRAULIC SYSTEM 185 – FIGURE 24

REF. NO.	NO. REQ.	<u>PART DESCRIPTION</u>	<u>PART NO.</u>
40	1	ASSEMBLY-LINE-PUMP TO CHECK VALVE (6")	3A09000-063
	1	FITTING-(AEROQUIP)	63-190600-4
	1	FITTING-(AEROQUIP) `45 '	190773-4S
	1	LINE (AEROQUIP) (6")	2807-4
41	2	ASSEMBLY-LINE-CHECK VALVE TO FIREWALL (4")	3A09000-059
	2	FITTING-(AEROQUIP)	63-190600-4
	2	FITTING-(AEROQUIP) `90 '	190773-4S
	2	LINE (AEROQUIP)	2807-4
42	1	ASSEMBLY-LINE-FIREWALL TO FIREWALL (11")	3A09000-060
	2	FITTING-(AEROQUIP)	63-190600-4
	1	LINE (AEROQUIP) (11")	2807-4
43	1	ASSEMBLY-LINE-FIREWALL TO FIREWALL (34.5")	3A09000-061
	2	FITTING-(AEROQUIP)	63-190600-4
	1	LINE (AEROQUIP) (34.5")	2807-4
44	2	ASSEMBLY-LINE-STRUT TO FIREWALL (18")	3A09000-062
	4	FITTING-(AEROQUIP)	63-190600-4
	2	LINE (AEROQUIP) (18")	2807-4
45	1	ASSEMBLY-EMERGENCY HAND PUMP	631875

WIPLINE MODEL 3730-3900 FLOATS PARTS MANUAL



INSTALLATION HYDRAULIC PUMP 185 – FIGURE 25

WIPLINE MODEL 3730-3900 FLOATS PARTS MANUAL

INSTALLATION HYDRAULIC PUMP 185 – FIGURE 25

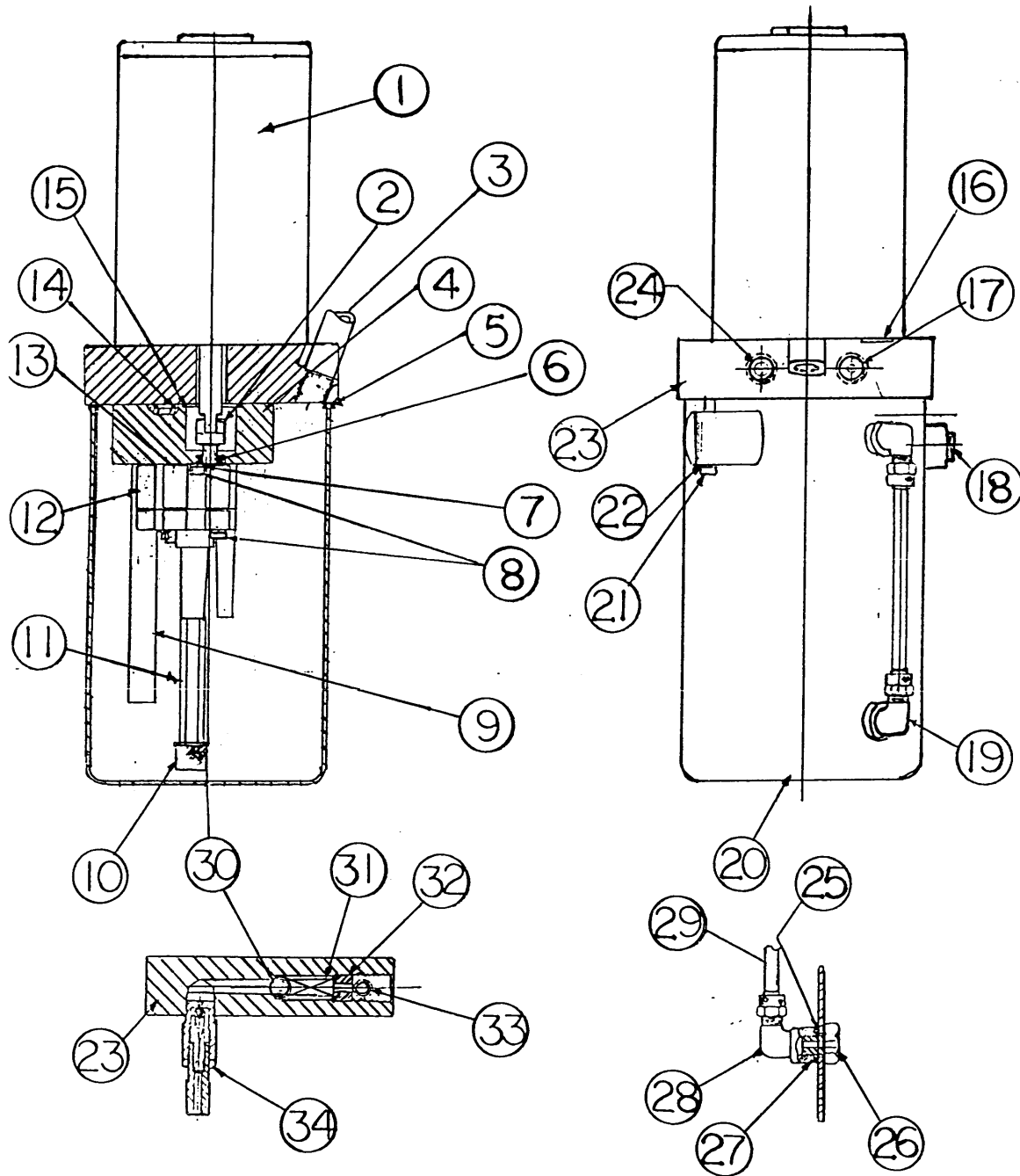
<u>REF. NO.</u>	<u>NO. REQ.</u>	<u>PART DESCRIPTION</u>	<u>PART NO.</u>
1	1	ASSEMBLY-PUMP AND MOTOR (24V)	3A09000-026
2	1	SOLENOID (24V)	S1580A1
	1	SOLENOID (12V)	S1579A2
	2	BOLT ATTACH	AN4-5A
	4	WASHER	AN960PD10
	2	NUT	AN365-428
3	1	ASSEMBLY-DIODE	3A10000-002
	1	FUSE HOLDER	
	1	FUSE	AGS 1/2
4	1	BRACKET-UPPER PUMP MOUNT	3A09003-011
	2	BOLT-ATTACH	AN3-4A
	2	WASHER	MS35333-42
	2	RIVNUT	MS27130A25
5	1	BRACKET-LOWER PUMP MOUNT	3A09357-032
	4	RIVET-CHERRY-ATTACH	CR3243-4-3
6	1	PRESSURE SWITCH (1000 PSI)	GPP1250-23
7	2	SPACER-PUMP TO FIREWALL	3A09270-001
	2	BOLT-ATTACH-CAP SCREW	3A09702-012
8	2	SPACER-MOTOR AND BRACKET	6A11274-002
9	2	FITTING	AN833-4D
	2	WASHER	AN960PD716
	2	NUT	AN924-4D
10	1	ASSEMBLY-LINE-PUMP TO RELIEF VALVE (8")	3A09000-058
	1	ASSEMBLY-LINE-PUMP TO RELIEF VALVE (6")	3A09000-063
11	2	ASSEMBLY-LINE-RELIEF VALVE TO FIREWALL (4")	3A09000-059

WIPLINE MODEL 3730-3900 FLOATS PARTS MANUAL

INSTALLATION HYDRAULIC PUMP 185 – FIGURE 25

REF. NO.	NO. REQ.	PART DESCRIPTION	PART NO.	
12	1	ASSEMBLY-RELIEF VALVE	3A09000-022	
	1	MANIFOLD	3A09214-001	
	1	HOLDER-SPRING-PRESSURE RELIEF	3A09258-002	
	1	ASSEMBLY-RELIEF VALVE (OILDYNE)	928	
	1	SPRING	410505-0	
	1	SEAT	362195	
	1	PLUNGER	361239	
	1	"O" RING	410494	
	1	"O" RING	401273	
	2	NIPPLE	AN816-4D	
	2	NIPPLE	AN816-4-4D	
	2	PLUG	AN932D3	
	2	SCREEN-ATTACH	AN526-1032R6	
	2	WASHER	AN936A10	
	13	1	ASSEMBLY-HYDRAULIC LINE (11")	3A09000-060
	14	1	ASSEMBLY-HYDRAULIC LINE (34")	3A09000-061
	15	2	ASSY. LINE (W/O EXTERNAL RELIEF VALVE) NOT PICTURED	3A09000-242

WIPLINE MODEL 3730-3900 FLOATS PARTS MANUAL



HYDRAULIC PUMP ASSEMBLY – FIGURE 26

WIPLINE MODEL 3730-3900 FLOATS PARTS MANUAL

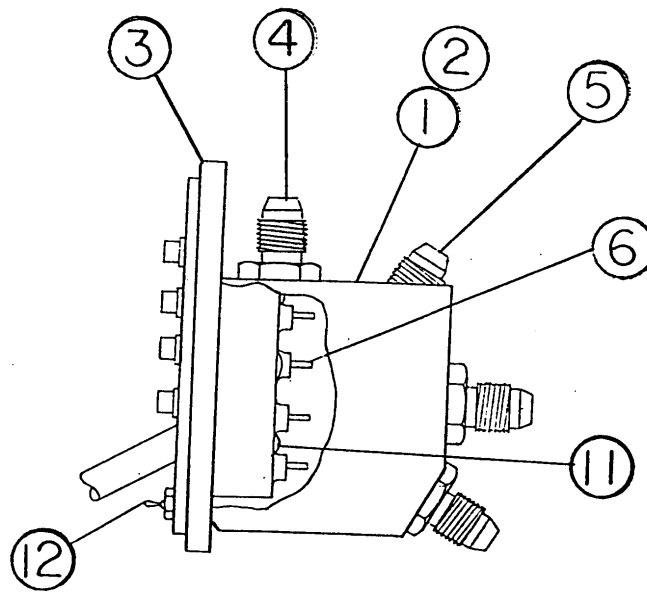
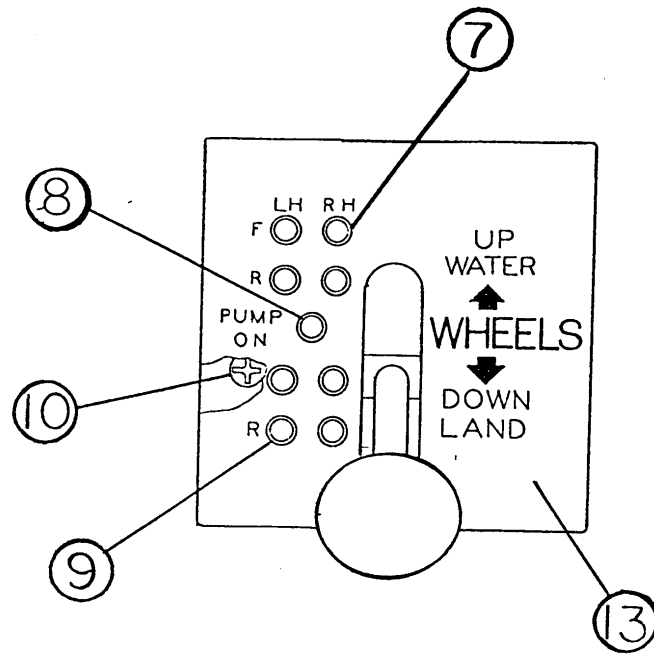
HYDRAULIC PUMP ASSEMBLY – FIGURE 26

REF. NO.	NO. REQ.	<u>PART DESCRIPTION</u>	<u>PART NO.</u>
	1	ASSEMBLY-MOTOR AND PUMP (24V)	3A09000-026
1	1	MOTOR (24V)	MB56-N1
	1	MOTOR (12V)	MB56-N2
	1	BEARING & BRUSHES (24 VOLT)	MB56C902-3 KIT
	1	BEARING & BRUSHES (12 VOLT)	MB56C902-5 KIT
2	1	COUPLING	361730
3	1	FILLER PIPE	6A09312-001
	1	FILTER-BRASS-BREATHER	6A09706-001
4	1	SPACER	361726
5	1	RESERVIOR-SEAL	410958
6	1	OIL SEAL	410512
7	4	LOCKWASHER	410410
8	4	SCREW	406187
9	1	PIPE NIPPLE	409894
10	1	FILTER	410521
11	1	TUBE EXTENSION	361843
12	1	PUMP ASSEMBLY	633383
13	2	"O" RING	405387
14	2	"O" RING	401273
15	1	"O" RING	404070
16	2	PILOT WASHER	361615
17	1	"O" RING PRESSURE PORT	MS28775-012

WIPLINE MODEL 3730-3900 FLOATS PARTS MANUAL

HYDRAULIC PUMP ASSEMBLY – FIGURE 26

REF. NO.	NO. REQ.	<u>PART DESCRIPTION</u>	<u>PART NO.</u>
18	1	PIPE PLUG	MS27769-3
19	1	SIGHT GAGE ASSY.	361507
20	1	RESERVOIR	704528
21	2	SCREW	406187
22	2	WASHER	409357
23	1	ADAPTOR	361473
24	1	"O" RING-RETURN PORT	#4 SAE
25	1	"O" RING RETAINER	361049
26	2	SCREW-SIGHT GAUGE	360824
27	2	"O" RING	402266
28	2	ELBOW	410330
29	1	TUBE-SIGHT GAUGE	361507
30	1	STEEL BALL	490405
31	1	SPRING	410462
32	1	LOCKSCREW	409211
33	1	PIPE PLUG	409263
34	1	RELIEF VALVE-ASSEMBLY	704520
	1	THERMAL RELIEF VALVE (NOT SHOWN)	704522
35	1	EMERGENCY HAND PUMP (NOT SHOWN)	631875



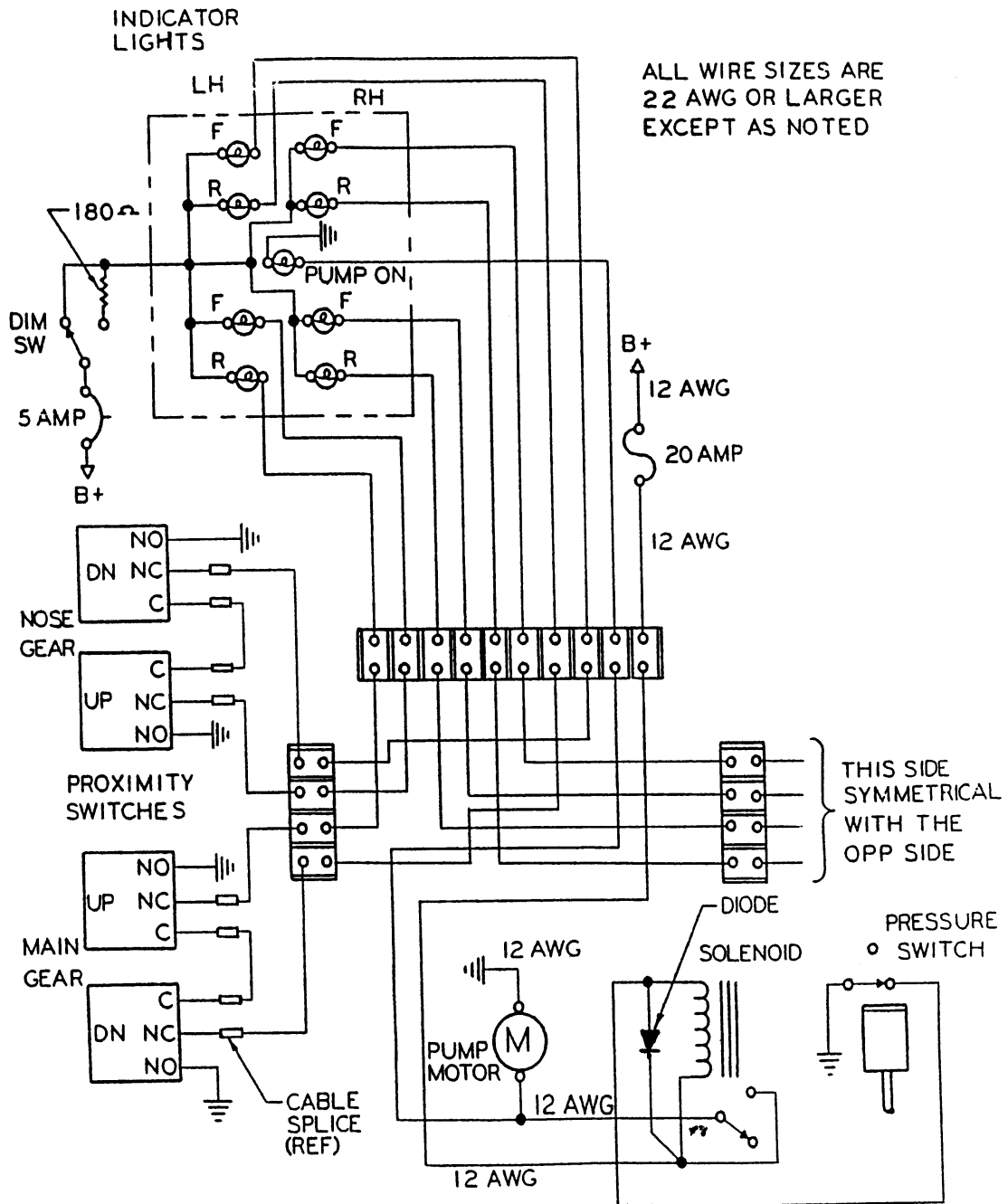
ASSEMBLY CONTROL VALVE – FIGURE 27

WIPLINE MODEL 3730-3900 FLOATS PARTS MANUAL

ASSEMBLY CONTROL VALVE – FIGURE 27

REF. NO.	NO. REQ.	<u>PART DESCRIPTION</u>	<u>PART NO.</u>
1	1	ASSEMBLY-VALVE-GEAR SELECTOR	3A09000-025
2	1	VALVE-GEAR SELECTOR	9881020-2
3	1	FACE PLATE-ROUND	3A09191-001
	1	FACE PLATE-SQUARE	3A09191-002
4	1	REDUCER	AN919-3D
	1	"O" RING	MS28775-012
5	3	FITTING	AN815-4D
	3	"O" RING	MS28775-012
6	6	SOCKET	515-0012
7	4	LAMP (24V) (BLUE)	5073918-1434-600
	4	LAMP (12V) (BLUE)	5073912-1434-600
8	1	LAMP (24V) (RED)	5073918-1431-600
	1	LAMP (12V) (RED)	5073912-1431-600
9	4	LAMP (24V) (GREEN)	5073918-1432-600
	4	LAMP (12V) (GREEN)	5073818-1432-600
10	3	SCREW-FACE ATTACH	MS24693S273
11	3	SCREW-LAMP ATTACH	AN526-632R6
12	1	DIM SWITCH (ARCHER)	A101SYCB
13	1	PLACARD-GEAR OPERATION	5A3-672

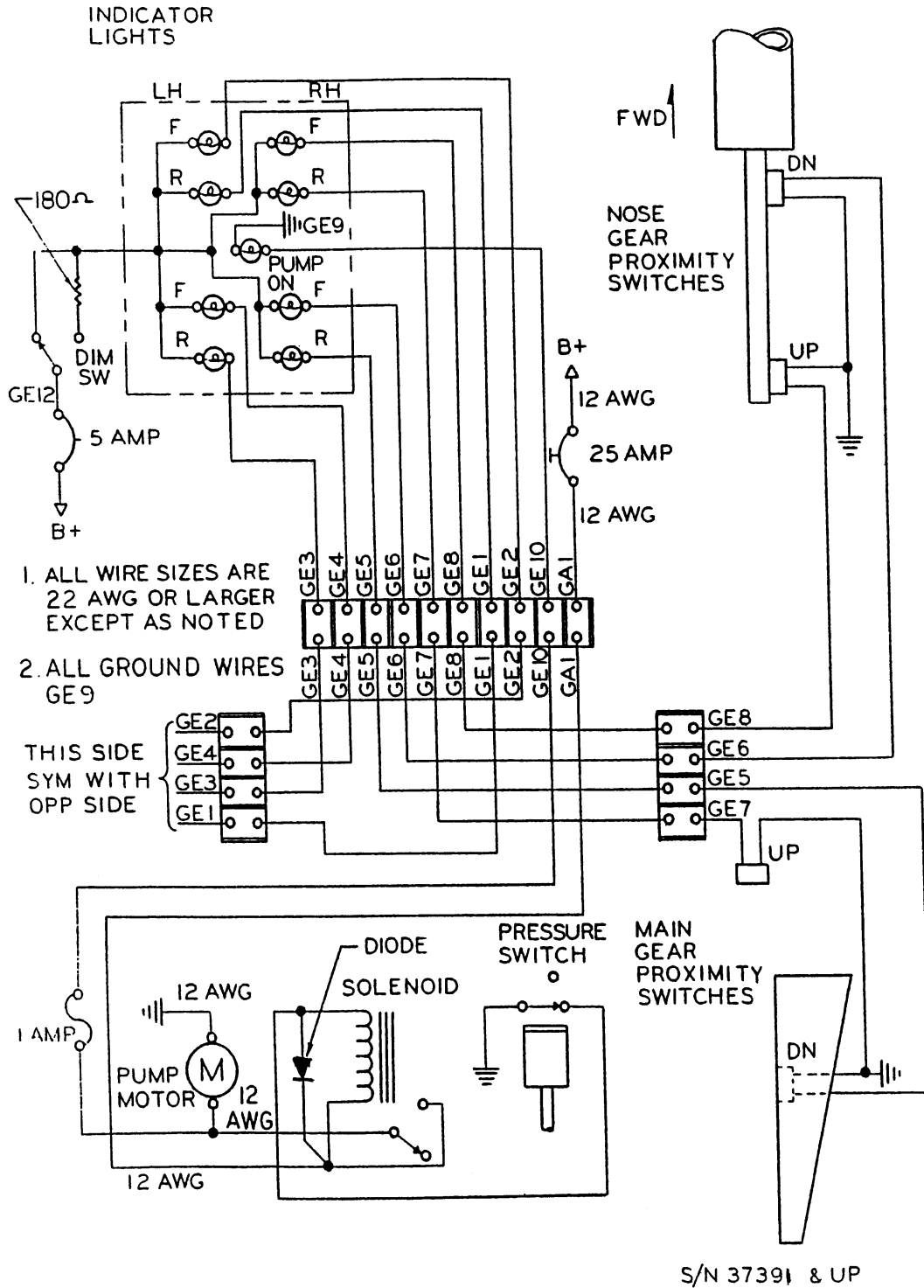
WIPLINE MODEL 3730-3900 FLOATS PARTS MANUAL



S/N 37390 & DOWN

SCHEMATIC LANDING GEAR ELECTRICAL SYSTEM – FIGURE 28

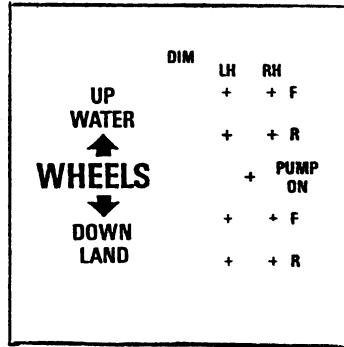
WIPLINE MODEL 3730-3900 FLOATS PARTS MANUAL



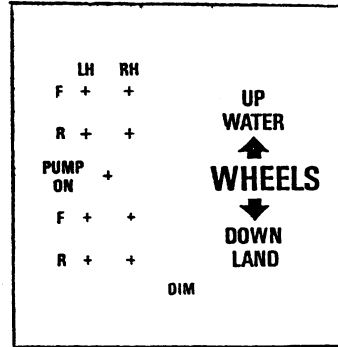
SCHEMATIC LANDING GEAR ELECTRICAL SYSTEM – FIGURE 29

WIPLINE FLOATS

1



2



3

WIPLINE AMPHIBIAN OPERATIONAL DATA
 • REFER TO WIPLINE FLIGHT MANUAL FOR OPERATION WITH WIPLINE FLOATS INSTALLED.
 • CAUTION: IT IS POSSIBLE TO OVERLOAD AIRCRAFT WITH SIX OCCUPANTS AND MINIMUM FUEL.
 • MAXIMUM GEAR EXTENSION SPEED 125 MPH CAS.
 • CAUTION IT IS POSSIBLE TO EXCEED THE FORWARD CG LIMIT WITH TWO OCCUPANTS AND FRONT SEATS IN FULL FORWARD POSITION.

4

WIPLINE AMPHIBIAN OPERATIONAL DATA
 • REFER TO WIPLINE FLIGHT MANUAL FOR OPERATION WITH WIPLINE FLOATS INSTALLED.
 • CAUTION: IT IS POSSIBLE TO OVERLOAD AIRCRAFT WITH SIX OCCUPANTS AND MINIMUM FUEL.
 • MAXIMUM GEAR EXTENSION SPEED 125 MPH CAS

5

REFER TO WIPLINE FLIGHT MANUAL FOR OPERATION WITH WIPLINE FLOATS INSTALLED

6

TIRE PRES. 38 LBS.

7

WATER RUDDER CONTROL

8

UP DOWN

9

LDG GEAR

10

CAUTION
 FLAMMABLE LIQUIDS
 PROHIBITED

11



12

13

PLACARDS AND DECALS – FIGURE 30

WIPLINE MODEL 3730-3900 FLOATS PARTS MANUAL

PLACARDS AND DECALS – FIGURE 30

REF. NO.	NO. REQ.	<u>PART DESCRIPTION</u>	<u>PART NO.</u>
1	1L-1R	DECAL FLOAT SIDE-WHITE OR BLACK (SPECIFY BORDER ANGLE AND COLOR)	ITEM 1L-1R
2	1	DECAL-GEAR SELECTOR-LEFT HAND	ITEM 2
3	1	DECAL-GEAR SELECTOR-RIGHT HAND	5A3-672
4	1	PLACARD-COCKPIT (185 AMPHIBIAN 3730) (SPECIFY WHITE OR BLACK)	ITEM 4
5	1	PLACARD-COCKPIT (206 AMPHIBIAN 3730) (SPECIFY WHITE OR BLACK)	ITEM 5
6	1	PLACARD-COCKPIT (185,206 SEAPLANE 3900) (SPECIFY WHITE OR BLACK)	ITEM 6
7	1	PLACARD-COCKPIT-TIRE PRESSURE (3730) (SPECIFY WHITE OR BLACK)	ITEM 7
8	1	PLACARD-WATER RUDDER CONTROL (SPECIFY WHITE OR BLACK)	ITEM 8
9	1	PLACARD-WATER RUDDER CONTROL (SPECIFY WHITE OR BLACK)	ITEM 9
10	1	PLACARD-CIRCUIT BREAKER (AMPHIBIAN 3730) (SPECIFY WHITE OR BLACK)	ITEM 10
11	1	PLACARD-BAGGAGE COMPARTMENT (AMPHIBIAN 3730)	9A3-632
12	1	PLACARD-EMERGENCY HAND PUMP (AMPHIBIAN 3730)	3A3-288
13	1	IDENTIFICATION PLATE	9A3-138

WIPLINE MODEL 3730-3900 FLOATS PARTS MANUAL

SIZING CHART

3A04 RETAINER AND BASE

BASE SHOCK STRUT CYLINDER	
Tube End Size Fittings*	
A	2.080
B	2.081
C	2.082
D	2.083
E	2.084
F	2.085
G	2.086
H	2.087
J	2.088
K	2.089
L	2.090
M	2.091
N	2.092
P	2.093
R	2.094
S	2.095
Z	2.079
Y	2.078
X	2.077
W	2.076

For Piston Go -.002

***Any tube size will correctly accommodate any fitting up to .004 smaller.**

V:\wW95\FitFactory\SizingChart3A04RetainerBase