



WIPLINE FLOATS • SKIS • MODIFICATIONS • AIRCRAFT SALES
AVIONICS • INTERIOR • MAINTENANCE • PAINT REFINISHING



PARTS MANUAL
FOR
WIPLINE MODEL 6000/6100
AMPHIBIOUS AND SEAPLANE FLOATS
DHC-2 MKI, DHC-2 MK III

1700 Henry Ave – Fleming Field (KSGS), South St. Paul, MN 55075
Ph: 651.451.1205 Fax: 651.457.7858
www.wipaire.com

THIS PAGE INTENTIONALLY LEFT BLANK

TABLE OF CONTENTS

<u>SECTION</u>	<u>PAGE</u>
LOG OF REVISIONS.....	5
FLOAT PART SALES DEPT. OPERATIONS.....	6
SHIPPING SCHEDULE.....	6
PARTS ORDERING.....	6
DAMAGED GOODS	6
RETURNED PARTS.....	7
ORDER SHORTAGES.....	7
CREDIT POLICY.....	7
LIST OF ABBREVIATIONS	7
NEW CUSTOMER INFORMATION	8
SECTION 1: HULL ASSEMBLY – AMPHIBIAN AND STRAIGHT	10
HULL ASSEMBLY – AMPHIBIAN	11
HULL ASSEMBLY – STRAIGHT	19
SECTION 2: MISC. HULL PARTS	26
MISC. HULL PARTS - AMPHIBIAN	27
MISC. HULL PARTS – STRAIGHT	29
SECTION 3: WHEEL WELL AREA.....	32
WHEEL WELL AREA	33
SECTION 4: STEP AREA – STRAIGHT FLOAT	36
STEP AREA – STRAIGHT FLOAT.....	37
SECTION 5: HULL EXTRUSIONS.....	40
HULL EXTRUSIONS – AMPHIBIAN.....	41
HULL EXTRUSIONS – STRAIGHT.....	43
SECTION 6: PUMPER TUBES.....	46
PUMPER TUBES – STRAIGHT AND AMPHIBIAN.....	47
SECTION 7: INSTALLATION – STRUTS AND STEPS.....	50
INSTALLATION – STRUTS AND STEPS	51
SECTION 8: INSTALLATION AND ASSEMBLY – SPREADER BAR.....	58
INSTALLATION AND ASS'Y – SPREADER BAR, AFT.....	59

WIPLINE MODEL 6000 / 6100 FLOAT PARTS MANUAL

INSTALLATION AND ASS'Y – SPREADER BAR, FWD.....	61
SECTION 9: MAIN GEAR WHEEL ASSEMBLY.....	64
MCCAULEY MANUFACTURED MAIN GEAR WHEEL ASS'Y	65
CLEVELAND/PARKER MANUFACTURED MAIN GEAR WHEEL ASS'Y	69
SECTION 10: MAIN GEAR AXEL ASSEMBLY.....	72
MAIN GEAR AXEL ASS'Y	73
SECTION 11: OLEO SHOCK STRUT ASSEMBLY.....	76
OLEO SHOCK STRUT ASS'Y (T-SEALS INSTALLED).....	77
OLEO SHOCK STRUT ASS'Y (O-RINGS INSTALLED)	79
SECTION 12: HYDRAULIC BRAKE SCHEMATIC.....	82
HYD. BRAKE SCHEMATIC.....	83
SECTION 13: MAIN GEAR SLIDE TUBE ASSEMBLY.....	86
MAIN GEAR SLIDE TUBE ASS'Y (O-RINGS INSTALLED)	87
MAIN GEAR SLIDE TUBE ASS'Y (T-SEALS INSTALLED).....	91
SECTION 14: NOSE GEAR ASSEMBLY.....	96
NOSE FORK AND PIVOT ASS'Y, LWR. END.....	97
NOSE GEAR RETRACTION ASS'Y, UPR. END (T-SEALS INSTALLED).....	101
NOSE GEAR RETRACTION ASS'Y, UPR. END (O-RINGS INSTALLED)	105
SECTION 15: WATER RUDDER INSTALLATION.....	110
WATER RUDDER BLADE INSTALLATION	111
WATER RUDDER AND RETRACT SCHEMATIC.....	115
SECTION 16: HYDRAULIC SYSTEM	118
HYDRAULIC SYSTEM SCHEMATIC – AMPHIBIAN.....	119
ASS'Y. HYD. PUMP.....	121
ASS'Y. HYD. PUMP.....	123
SECTION 17: ELECTRICAL SCHEMATIC.....	126
ELECTRICAL SCHEMATIC – AMPHIB.	127
SECTION 18: CONTROL CONSOLE.....	130
CONTROL CONSOLE – AMPHIB.....	131

LOG OF REVISIONS

Revision	Pages Effected	Description	Date
A	67, 69	Changed Drawing & Parts List	2/10/06
B	48	Added Cleveland/Parker manufactured Main Gear Wheel Assy' figure 12A and P/Ns	10/4/06
B	13	Added parts to No. 43	10/4/06
C	49	Wheel bolt p/n changed from MN21044-N5 to MS21042-5 low profile steel bolt to create greater bolt thread extension after torquing.	8/31/07
D	55, 56 69-72	Nose gear retraction and main shock strut images revised and parts lists changed to reflect T-Seal update.	4/1/08
E	68	Parts numbers changed for the wheel grease retainer and the nose wheel assembly. Old retainer is still available for purchase and shown on 64 also.	7/4/08
F	57,58,68, 69, 80-84	Pages removed for T-seal change in Rev.D returned to aid customers who choose not to update. Main Oleo, Main and Nose retraction can be sealed with either the updated T-seal system or original O-ring system. Call Wipaire Customer service if you are not sure which system is installed. Part numbers updated on numerous pages.	10/31/08
G	74-76	Updated drawing to include both wheel styles and associated parts.	2/20/09
H	Multiple	Parts Numbers Updated throughout the Manual. New Customer pages added.	9/1/10
J	ALL	Reformat of entire document, and part numbers updated throughout.	6/16/14
K	3	Removed Warranty Claim Form	3/31/16

FLOAT PART SALES DEPT. OPERATIONS

Hours: 8 AM - 6 PM, Monday through Friday

Central U.S. Time

Phone: 651-306-0459

Fax: 651-306-0666

Email: CustomerService@wipaire.com

Website: www.wipaire.com

SHIPPING SCHEDULE

In stock standard parts orders ship by the end of the next business day. Urgent and AOG orders will be shipped the same day subject to parts availability and may be assessed an AOG fee for special priority handling.

Partial orders will be shipped unless the customer requests that the order only be shipped complete.

Backordered items will be shipped the same day in which they become available.

As we are primarily a manufacturer, our stocks can be rapidly depleted by production requirements. Therefore, prices and availability are subject to change at any time. It is our intent to provide courteous and prompt service of your needs. Please let us know of any problems or concerns so that changes in these procedures can be a benefit for all.

PARTS ORDERING

Purchase orders should include:

1. P.O. Number
2. Name of person placing order
3. Invoicing information:
 - I. Customer name - company or individual
 - i. Address
 - ii. Phone and fax number
4. Shipping information:
 - I. Address (if different from invoice address)
 - II. Method of shipment/preferred carrier
5. Aircraft model, float model and serial numbers
6. Wipaire part number; name; type, e.g. left or right; quantity
7. Payment method: VISA, MasterCard, COD (U.S. customers only), pre-payment by check or wire transfer, open account (see credit policy section).

DAMAGED GOODS

Inspect all parts upon receipt. Damages to parts in transit must be filed as a claim against the carrier.

WIPLINE MODEL 6000 / 6100 FLOAT PARTS MANUAL

RETURNED PARTS

Written explanation of reason for return must accompany parts, including invoice number of original shipment. Shipping charges on returned parts must be prepaid or the shipment will be refused.

ORDER SHORTAGES

Check shipment against delivery slip immediately. All claims for any shortages should be made within three (3) days after order receipt.

CREDIT POLICY

Parts will be shipped on open account, net 30 days, to Wipaire-approved credit customers only. A balance due over 60 days will result in no shipments. Wipaire, Inc reserves the right to send any order C.O.D.

LIST OF ABBREVIATIONS

All references in this manual to LEFT and RIGHT are from the perspective of the pilot's seat with the floats fully installed and ready for floatplane operation. The following is a list of abbreviations that may appear in the description nomenclature fields of this manual.

AB	AFTERBODY	INBD.	INBOARD
AMPHIB.	AMPHIBIOUS	LG.	LARGE.
AR	AS REQUIRED	LT.	LEFT
ASS'Y.	ASSEMBLY	LWR.	LOWER
BRKT.	BRACKET	OPT.	OPTIONAL
BTM.	BOTTOM	OTBD.	OUTBOARD
BULK.	BULKHEAD	REINF.	REINFORCEMENT
CTR.	CENTER	RR.	REAR
CYL.	CYLINDER	RT.	RIGHT
FT.	FRONT	SM.	SMALL
FTG.	FITTING	SN	SERIAL NUMBER
FUS.	FUSELAGE	SPR.	SPREADER
FWD.	FORWARD	UPR.	UPPER
HORIZ.	HORIZONTAL	VERT.	VERTICAL
HYD.	HYDRAULIC	W.W.	WHEEL WELL



NEW CUSTOMER INFORMATION

Customer Name	
Billing Address	
Shipping Address	
Phone Number	Fax Number
Purchasing Contact	Phone Number
E-Mail	Fax Number
Accounts Payable Contact	Phone Number
E-Mail	Fax Number
Type(s) of Aircraft Owned or Maintained	
Model(s) of Floats and Skis Owned or Maintained	
FedEx and/or UPS account number (if applicable)	

Please return to Wipaire Customer Service:

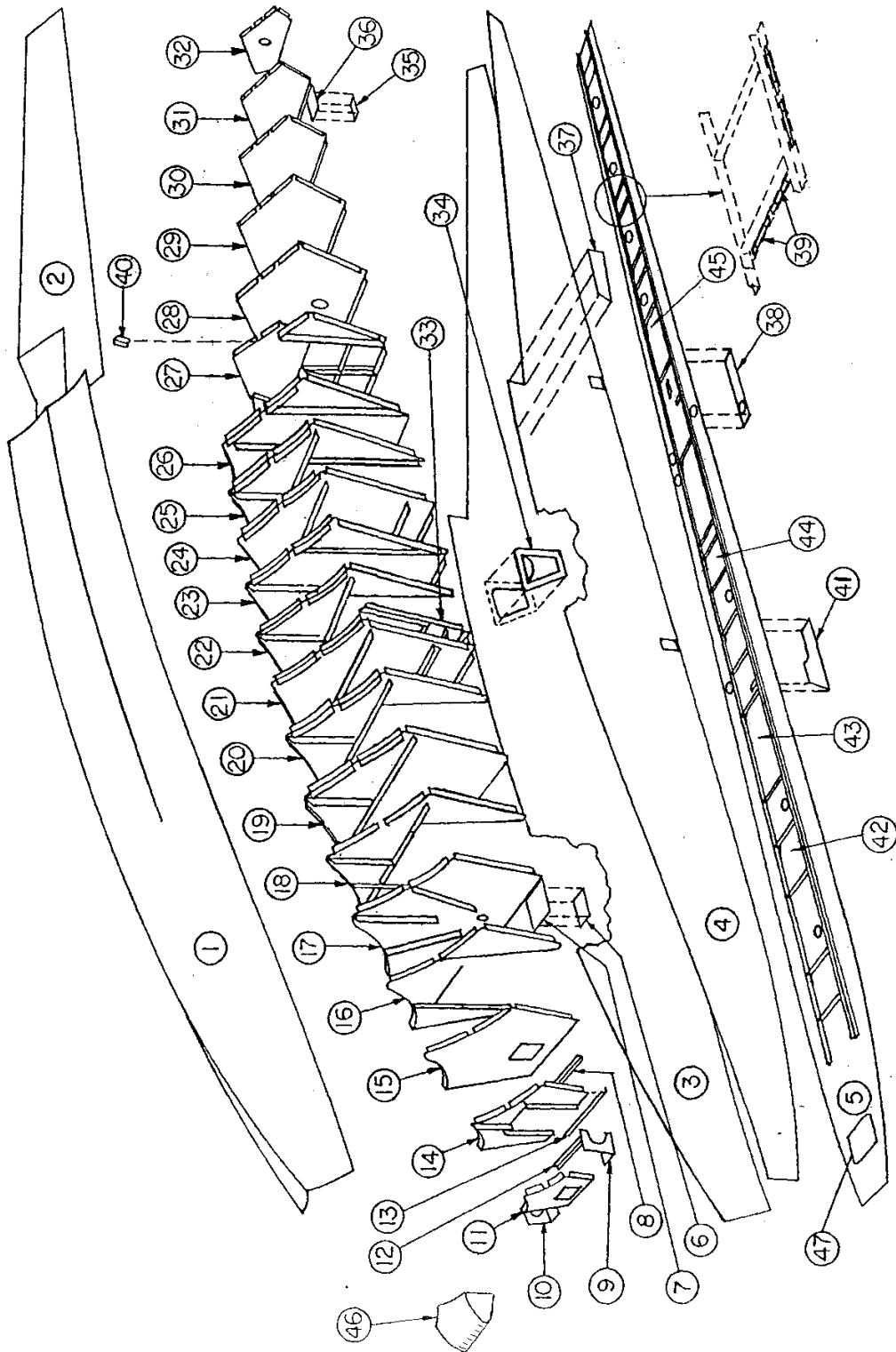
Fax 651-306-0666

Phone 651-306-0459

CustomerService@wipaire.com

THIS PAGE INTENTIONALLY LEFT BLANK

SECTION 1: HULL ASSEMBLY – AMPHIBIAN AND STRAIGHT



HULL ASSEMBLY - AMPHIBIAN
FIGURE 1

WIPLINE MODEL 6000 / 6100 FLOAT PARTS MANUAL

ITEM	QTY	FIGURE 1: HULL ASSEMBLY-AMPHIBIAN PART DESCRIPTION	PART NO.
1	1	SKIN, BTM.,LT. FWD.	6A01151-051
	1	SKIN, BTM. RT. FWD.	6A01151-052
2	1	SKIN, AB LT.	6A01158-135
	1	SKIN, AB RT.	6A01158-134
3	1	SKIN, SIDE, OTBD., LT. FWD.	6A01158-033
	1	SKIN, SIDE, OTBD., RT. FWD.	6A01158-032
4	1	SKIN, SIDE, INBD., LT. FWD.	6A01158-031
	1	SKIN, SIDE, INBD., RT. FWD.	6A01158-030
	1	BRACKET, PADDLE STOP, RT.	6A01156-058
	1	BRACKET, PADDLE STOP, LT.	6A01156-059
	2	BRACKET	3A01158-093
	2	CLIP, PADDLE	3A01503-001
	2	PADDLE, 5 ½ FT.	0238-0068
5	1	SKIN, TOP, LT. FLOAT	6A01158-037
	1	SKIN, TOP, RT. FLOAT	6A01158-036
	1	ANGLE, TOP SKIN, LONG LT.	6A01348-001
	1	ANGLE, TOP SKIN, LONG RT.	6A01348-002
	2	ANGLE, SHORT BAGGAGE COMPARTMENT	6A01352-006
	2	ANGLE, SHORT INSPECTION COVERS	6A01352-005
6	1	SPACER, CLEAT ATTACH	6A01156-015
7	1	PLATE, CLEAT ATTACH	6A01156-016
	2	CLEAT, TIE DOWN	6A01213-003
8	1	STIFFENER, TOP SKIN AB.	6A01339-032
9	2	GUSSET, NOSE BULK.	6A01156-019
10	2	GUSSET, NOSE BULK.	6A01156-020
11	1	ASS'Y., BULK. #1	6A01000-028
	2	ANGLE, KEEL ATTACH	6A01359-004
	11	NUT PLATES	MS21047L4
	1	BULK.	6A01156-009
12	1	STIFFENER, TOP SKIN, FWD.	6A01339-030
		FIGURE 1: HULL ASSEMBLY-AMPHIBIAN	

WIPLINE MODEL 6000 / 6100 FLOAT PARTS MANUAL

ITEM	QTY	PART DESCRIPTION	PART NO.
13	1	STIFFENER, TOP SKIN, MIDDLE	6A01361-012
14	1	ASS'Y., BULK. #2	6A01000-029
	1	BULK. BTM.	6A01158-006
	1	BULK. SIDE, LT.	6A01005-033
	1	BULK. SIDE, RT.	6A01005-034
	1	ANGLE, KEEL ATTACH, LT.	6A01359-007
	1	ANGLE, KEEL ATTACH, RT.	6A01359-008
	2	ANGLE, SISTER KEEL ATTACH	6A01359-009
15	1	ASS'Y., BULK. #3	6A01000-030
	1	BULK., BTM.	6A01158-007
	2	BULK., TOP	6A01005-035
	1	ANGLE, KEEL ATTACH, LT.	6A01359-011
	1	ANGLE, KEEL ATTACH, RT.	6A01359-010
	1	ANGLE, SISTER KEEL ATTACH, LT.	6A01359-013
	1	ANGLE, SISTER KEEL ATTACH, RT.	6A01359-012
	1	ANGLE, NOSE BOX ATTACH, LT.	6A01359-015
	1	ANGLE, NOSE BOX ATTACH, RT.	6A01359-014
	2	ANGLE, TOP RAIL ATTACH	6A01359-004
16	1	ASS'Y. BULK. #4	6A01000-031
	1	BULK., BTM.	6A01158-008
	1	BULK., SIDE, LT.	6A01005-037
	1	BULK., SIDE, RT.	6A01005-036
	1	ANGLE, KEEL ATTACH, LT.	6A01359-017
	1	ANGLE, KEEL ATTACH, RT.	6A01359-016
	1	ANGLE, SISTER KEEL ATTACH	6A01359-001
17	1	ASS'Y., BULK. #5	6A01000-032
	1	BULK., BTM.	6A01158-009
	1	BULK., TOP	6A01005-038
	1	ANGLE, KEEL ATTACH, LT.	6A01359-019
	1	ANGLE, KEEL ATTACH, RT.	6A01359-018
	1	ANGLE, SISTER KEEL ATTACH, LT.	6A01359-021
	1	ANGLE, SISTER KEEL ATTACH, RT.	6A01359-020
	1	ANGLE, TOP RAIL ATTACH	6A01359-004
18	1	ASS'Y., BULK. #6	6A01000-033
	1	BULK., BTM.	6A01158-010
	1	BULK., SIDE, RT.	6A01005-040
	1	ANGLE, KEEL ATTACH, LT.	6A01005-039
	1	ANGLE, KEEL ATTACH, RT.	6A01359-002
	1	ANGLE, MAIN KEEL ATTACH	6A01359-003

WIPLINE MODEL 6000 / 6100 FLOAT PARTS MANUAL

ITEM	QTY	FIGURE 1: HULL ASSEMBLY-AMPHIBIAN PART DESCRIPTION	PART NO.
	1	ANGLE, SISTER KEEL ATTACH	6A01359-001
19	1	ASS'Y., BULK. #7	6A01000-034
	1	BULK., BTM. FWD.	6A01158-011
	1	BULK., BTM. AFT	6A01158-012
	1	BULK., SIDE, LT.	6A01005-041
	1	BULK., SIDE, RT.	6A01005-042
	1	ANGLE, KEEL ATTACH, LT.	6A01359-003
	1	ANGLE, KEEL ATTACH, RT.	6A01359-002
	2	ANGLE, SISTER KEEL ATTACH	6A01359-001
	1	ANGLE, VERT., LT.	6A01359-023
	1	ANGLE, VERT., RT.	6A01359-022
	2	ANGLE, TOP RAIL ATTACH	6A01359-004
	1	BULK., SIDE, RT.	6A01005-180
	1	ANGLE, VERT. BEND	6A01359-092
	2	ANGLE SUPPORT	6A01361-025
20	1	ASS'Y., BULK., #8	6A01000-035
	1	BULK., BTM. FWD.	6A01158-013
	1	BULK., BTM. RR.	6A01158-014
	1	BULK., SIDE, LT.	6A01005-043
	1	BULK., SIDE, RT.	6A01005-044
	1	ANGLE, KEEL ATTACH, LT.	6A01359-003
	1	ANGLE, KEEL ATTACH, RT.	6A01359-002
	2	ANGLE, SISTER KEEL ATTACH	6A01359-001
21	1	ASSY., BULK., #9 (LT. FLOAT)	6A01000-037
	1	ASS'Y., BULK., #9 (RT. FLOAT)	6A01000-036
	1	ANGLE, ATTACH, TOP (LT. FLOAT)	6A01156-055
	1	ANGLE, ATTACH, TOP (RT. FLOAT)	6A01156-054
	2	PLATE, SEAL SLOT	6A01150-119
	1	ANGLE, KEEL ATTACH, LT.	6A01359-025
	1	ANGLE, KEEL ATTACH, RT.	6A01359-024
	1	ANGLE, SISTER KEEL ATTACH, LT.	6A01359-027
	1	ANGLE, SISTER KEEL ATTACH, RT.	6A01359-026
	1	PANEL, SPR. BAR, LT. BULK.	6A01338-001
	1	PANEL, SPR. BAR, RT. BULK.	6A01338-002
	1	ANGLE, SIDE BULK., LT.	6A01357-001
	1	ANGLE, SIDE BULK., RT.	6A01357-002
	1	BULK. BTM., FWD.	6A01158-015

WIPLINE MODEL 6000 / 6100 FLOAT PARTS MANUAL

ITEM	QTY	FIGURE 1: HULL ASSEMBLY-AMPHIBIAN PART DESCRIPTION	PART NO.
	1	BULK. BTM., RR.	6A01158-016
	1	BULK., TOP	6A01005-045
	1	ANGLE, PUMP MOUNT, RT. FLOAT ONLY	6A01357-020
	1	ANGLE, ATTACH	6A01359-004
22	1	ASS'Y., BULK., #10	6A01000-038
	2	BULK., BTM.	6A01158-017
	1	BULK., SIDE, LT.	6A01005-047
	1	BULK., SIDE, RT.	6A01005-046
	1	ANGLE, KEEL ATTACH, LT.	6A01359-003
	1	ANGLE, KEEL ATTACH, RT.	6A01359-002
23	1	ASS'Y., BULK., #11	6A01000-039
	2	BULK. BTM	8A01158-128
	1	BULK. TOP	6A01005-048
	1	ANGLE, KEEL ATTACH, LT.	6A01359-025
	1	ANGLE, KEEL ATTACH, RT.	6A01359-024
	1	ANGLE, SISTER KEEL ATTACH, LT.	6A01359-033
	1	ANGLE, SISTER KEEL ATTACH, RT.	6A02359-032
	2	ANGLE, TOP RAIL ATTACH	6A01359-004
24	1	ASS'Y., BULK., #11A	6A01000-040
	2	BULK., BTM.	8A01158-128
	1	BULK., TOP	6A01005-217
	1	ANGLE, KEEL ATTACH, LT.	6A01359-025
	1	ANGLE, KEEL ATTACH, RT.	6A01359-024
	1	ANGLE, SISTER KEEL ATTACH, LT.	6A01359-033
	1	ANGLE, SISTER KEEL ATTACH, RT.	6A01359-032
	1	ANGLE, HORIZ. TUNNEL ATTACH	6A01359-034
	2	ANGLE, TOP RAIL ATTACH	6A01359-004
	1	RIVNUT	MS27130A7
25	1	ASS'Y., BULK., #11B	6A01000-041
	2	BULK., BTM.	8A01158-128
	1	BULK., SIDE, LT.	6A01005-049
	1	BULK., SIDE, RT.	6A01005-050
	1	ANGLE, KEEL ATTACH, LT.	6A01359-035
	1	ANGLE, KEEL ATTACH, RT.	6A01359-036
	1	ANGLE, HORIZ.	6A01359-037
26	1	ASS'Y., BULK., #12	6A01000-043
	1	BULK., BTM.	8A01158-128
	1	BULK., TOP	6A01005-218

WIPLINE MODEL 6000 / 6100 FLOAT PARTS MANUAL

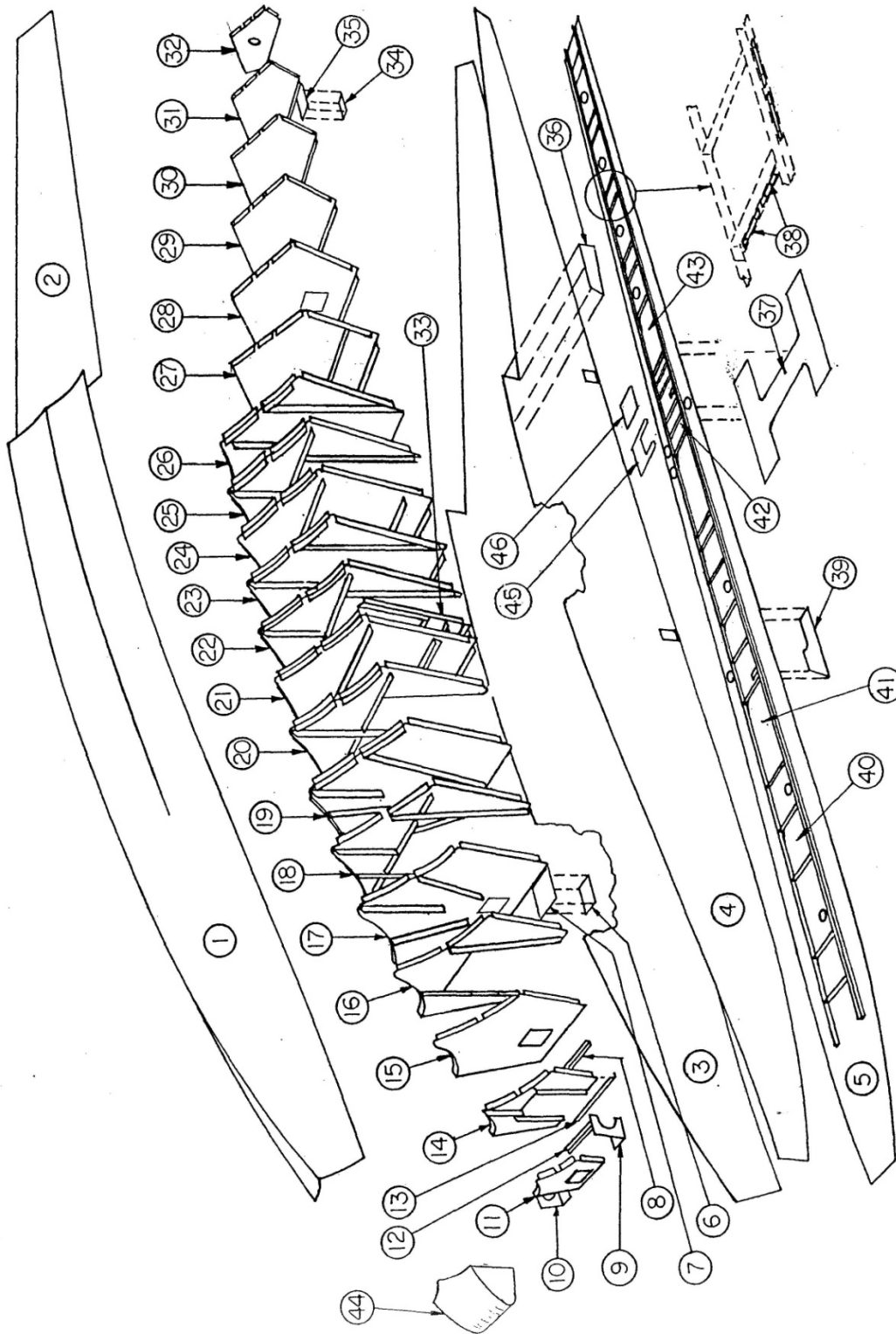
ITEM	QTY	FIGURE 1: HULL ASSEMBLY-AMPHIBIAN PART DESCRIPTION	PART NO.
	1	ANGLE, KEEL ATTACH, LT.	6A01359-025
	1	ANGLE, KEEL ATTACH, RT.	6A01359-024
	1	PANEL, ASSY., LT.	6A01000-063
	1	PANEL, ASSY., RT.	6A01000-062
	1	ANGLE, SISTER KEEL ATTACH, LT.	6A01359-041
	1	ANGLE, SISTER KEEL ATTACH,RT.	6A01359-040
	1	ANGLE, HORIZ. TOP	6A01359-038
	1	ANGLE, HORIZ. LWR.	6A01359-039
	2	ANGLE, TOP RAIL ATTACH	6A01359-004
	1	ANGLE, AFT, LT.	6A01008-055
	1	ANGLE, AFT, RT.	6A01008-056
27	1	ASS'Y., BULK., #13, LT.	6A01000-045
	1	ASS'Y., BULK., #13, RT.	6A01000-174
	1	BODY, BULK., LT.	6A01008-119
	1	BODY, BULK., RT.	6A01008-006
	1	PANEL, BULK.	6A01002-031
	1	ANGLE, SLIDE TUBE ATTACH, LT.	6A01339-029
	1	ANGLE, SLIDE TUBE ATTACH, RT.	6A01339-028
	1	ANGLE, VERT., LT.	6A01359-087
	1	ANGLE, VERT., RT.	6A01359-088
	1	ANGLE, HORIZ., LONG	6A01359-042
	2	ANGLE, HORIZ., SHORT	6A01008-009
	2	ANGLE, RAIL ATTACH	6A01359-004
	1	ANGLE, SISTER KEEL, AB.	6A01361-003
	1	ANGLE, SISTER KEEL	6A01361-036
28	1	ASS'Y., BULK., #14	6A01000-047
	1	BODY, BULK.	6A01002-033
	6	ANGLE, RAIL ATTACH	6A01359-004
29	1	ASS'Y., BULK., #15	6A01000-048
	1	BODY, BULK.	6A01002-034
	6	ANGLE, RAIL ATTACH	6A01359-004
30	1	ASS'Y., BULK., #16	6A01000-049
	1	BODY, BULK.	6A01002-035
	6	ANGLE, RAIL ATTACH	6A01359-004
31	1	ASS'Y., BULK., #17	6A01000-050
	1	BODY, BULK.	6A01002-036
	6	ANGLE, RAIL ATTACH	6A01359-004
	2	DOUBLER CABLE	6A01156-070

WIPLINE MODEL 6000 / 6100 FLOAT PARTS MANUAL

ITEM	QTY	FIGURE 1: HULL ASSEMBLY-AMPHIBIAN PART DESCRIPTION	PART NO.
32	1	ASS'Y., BULK., #18	6A01000-051
	1	BODY, BULK.	6A01002-037
	6	ANGLE, RAIL ATTACH	6A01359-004
	1	PIVOT, CASTING	3A01437-001
	1	ANGLE, TOP SKIN	6A01352-004
	1	ANGLE, REINFORCEMENT	6A01361-001
	1	ANGLE, REINFORCEMENT	6A01361-002
	1	ANGLE, REINFORCEMENT	6A01359-044
33	1	ASS'Y., FT., SPR. BAR PANEL, LT.	6A01000-053
	1	ASS'Y., FT., SPR. BAR PANEL, RT.	6A01000-052
	1	PANEL, FT. SPR. BAR, LT.	6A01338-003
	1	PANEL, FT. SPR. BAR, RT.	6A01338-004
	1	ANGLE, FT. SPR. BAR PANEL, LT.	6A01357-003
	1	ANGLE, FT. SPR. BAR PANEL, RT.	6A01357-004
34	1	ASS'Y., STEP BOARDING	3A01000-005
35	1	SPACER, CLEAT ATTACH	6A01156-015
36	1	PLATE, CLEAT ATTACH	6A01156-016
37	2	GUSSET STEP	6A01002-038
38	1	DOUBLER, TOP SKIN, RR.	6A01008-022
39	A/R	PLATENUT, TINNERMAN WITH TAPE	1002481
40	2	ANGLE, RR. SISTER KEEL ATTACH	6A01361-003
41	1	DOUBLER, TOP SKIN, FT.	6A01008-021
42	6	ASS'Y., INSPECTION COVER (10")	6A01000-456
	6	RUBBER GASKET	3A01567-008
43	1	ASS'Y., BAGGAGE COVER, METAL HINGE	6A01000-123
	1	ASS'Y., BAGGAGE COVER, PLASTIC HINGE (OLD STYLE)	6A01000-073
	1	HINGE, CONT. (SHEPARD CO. - PLASTIC) (OLD STYLE)	1-1/2" BLK HINGE
	2	LATCH (SOUTHCO) (OLD STYLE)	6A01000-166
	2	SPRING LOCK	3A01525-003
	2	LOCK INSERT	3A01273-004
	2	LOCK CATCH	3A01702-004
	2	RING LOCK OPENING	1002663
	2	BLOCK RETAINER	3A01206-001

WIPLINE MODEL 6000 / 6100 FLOAT PARTS MANUAL

ITEM	QTY	FIGURE 1: HULL ASSEMBLY-AMPHIBIAN PART DESCRIPTION	PART NO.
	1	SEAL	1085-1MDC
	18	POP RIVETS	1001571
44	1	ASS'Y., INSPECTION COVER (8.75")	6A01000-072
	1	RUBBER GASKET	6A01567-003
45	2	ASS'Y., INSPECTION COVER (17.5")	6A01000-071
	2	RUBBER GASKET	6A01567-004
46	1	NOSE BUMPER	6A01635-003
	2	ANGLE, NOSE BUMPER ATTACH	6A01359-051
47	1	INSPECTION COVER NOSE (MODEL 6100)	6A01163-042
	2	STIFFENER INSP. COVER	6A01156-014
	1	RUBBER GASKET	6A01567-005
48	2	SPLASH RAILS CHINE (NOT SHOWN)	6A01008-074
49	1	BAGGAGE FLOOR (AFT HALF) SOLID ALUM.LT.	6A01008-133
	1	BAGGAGE FLOOR (AFT HALF) SOLID ALUM RT.	6A01008-134
	1	BAGGAGE FLOOR (FWD. HALF) SOLID ALUM.	6A01008-139



HULL ASSEMBLY – STRAIGHT
FIGURE 2

WIPLINE MODEL 6000 / 6100 FLOAT PARTS MANUAL

ITEM	QTY	FIGURE 2: HULL ASSEMBLY-STRAIGHT PART DESCRIPTION	PART NO.
1	1	SKIN, BTM., LT.	6A01151-051
	1	SKIN, BTM., RT.	6A01151-052
2	1	SKIN, AFT, LT.	6S01158-133
	1	SKIN, AFT, RT.	6S01158-132
3	1	SKIN, SIDE, OTBD, LT.	6S01158-035
	1	SKIN, SIDE, OTBD, RT.	6S01158-034
4	1	SKIN, SIDE, INBD., LT.	6A01158-031
	1	SKIN, SIDE, INBD., RT.	6A01158-030
	1	BRACKET, PADDLE STOP, RT.	6A01156-058
	1	BRACKET, PADDLE STOP, LT.	6A01156-059
	2	BRACKET	3A01158-093
	2	CLIP, PADDLE	3A01503-001
	2	PADDLE, 5 ½ FT.	0238-0068
5	1	SKIN, TOP, LT.	6S01158-039
	1	SKIN, TOP, RT.	6S01158-038
	1	ANGLE, TOP SKIN, LT.	6A01348-001
	1	ANGLE, TOP SKIN, RT.	6A01348-002
	2	ANGLE, TOP SKIN BAGGAGE	6A01352-006
	2	ANGLE, TOP SKIN	6A01352-005
6	1	SPACER, CLEAT ATTACH	6A01156-015
7	1	PLATE, CLEAT ATTACH	6A01156-016
	2	CLEAT, TIE DOWN	6A01213-003
8	1	STIFFENER, TOP SKIN, AFT	6A01339-032
9	2	DOUBLER, SIDE	6A01156-019
10	2	DOUBLER, TOP	6A01156-020
11	1	ASS'Y., BULK., #1	6A01000-028
	2	ANGLE, KEEL ATTACH	6A01359-004
	1	COVER, NOSE BOX	6S01002-040
	1	BULK.	6A01156-009
	11	NUTPLATE, TWO LUG	MS21047L4
12	1	STIFFENER, TOP SKIN, FWD.	6A01339-030
13	1	STIFFENER, TOP SKIN, MIDDLE	6A01361-012

WIPLINE MODEL 6000 / 6100 FLOAT PARTS MANUAL

ITEM	QTY	FIGURE 2: HULL ASSEMBLY-STRAIGHT PART DESCRIPTION	PART NO.
14	1	ASS'Y., BULK., #2	6A01000-029
	1	BULK. BTM.	6A01158-006
	1	BULK. SIDE, LT.	6A01005-033
	1	ANGLE, KEEL ATTACH, LT.	6A01359-007
	1	BULK. SIDE, RT.	6A01005-034
	1	ANGLE, KEEL ATTACH, RT.	6A01359-008
	2	ANGLE, SISTER KEEL, ATTACH	6A01359-009
15	1	ASS'Y., BULK., #3	6A01000-030
	1	BULK., BTM.	6A01158-007
	1	BULK., TOP	6A01005-035
	1	ANGLE, KEEL ATTACH, LT.	6A01359-011
	1	ANGLE, KEEL ATTACH, RT.	6A01359-010
	1	ANGLE, SISTER KEEL ATTACH, LT.	6A01359-013
	1	ANGLE, SISTER KEEL ATTACH, RT.	6A01359-012
	1	ANGLE, NOSE BOX ATTACH, LT.	6A01359-015
	1	ANGLE, NOSE BOX ATTACH, RT.	6A01359-014
	2	ANGLE, TOP RAIL ATTACH	6A01359-004
16	1	ASS'Y., BULK., #4	6A01000-031
	1	BULK., BTM.	6A01158-008
	1	BULK. SIDE, LT.	6A01005-037
	1	BULK. SIDE, RT.	6A01005-036
	1	ANGLE, KEEL ATTACH, LT.	6A01359-017
	1	ANGLE, KEEL ATTACH, RT.	6A01359-016
	2	ANGLE, SISTER KEEL ATTACH	6A01359-001
17	1	ASS'Y., BULK., #5	6A01000-032
	1	BULK., BTM.	6A01158-009
	1	BULK., TOP	6A01005-038
	1	ANGLE, KEEL ATTACH, LT.	6A01359-019
	1	ANGLE, KEEL ATTACH, RT.	6A01359-018
	1	ANGLE, SISTER KEEL ATTACH, LT.	6A01359-021
	1	ANGLE, SISTER KEEL ATTACH, RT.	6A01359-020
	2	ANGLE, TOP RAIL ATTACH	6A01359-004
18	1	ASS'Y., BULK., #6	6A01000-033
	1	BULK., BTM.	6A01158-010
	1	BULK. SIDE, LT.	6A01005-039
	1	BULK. SIDE, RT.	6A01005-040
	1	ANGLE, KEEL ATTACH, LT.	6A01359-003
	1	ANGLE, KEEL ATTACH, RT.	6A01359-002
	2	ANGLE, SISTER KEEL ATTACH	6A01359-001

WIPLINE MODEL 6000 / 6100 FLOAT PARTS MANUAL

ITEM	QTY	FIGURE 2: HULL ASSEMBLY-STRAIGHT PART DESCRIPTION	PART NO.
19	1	ASS'Y., BULK., #7	6A01000-034
	1	BULK., BTM. FWD.	6A01158-011
	1	BULK., BTM. AFT	6A01158-012
	1	BULK., SIDE LT.	6A01005-041
	1	BULK., SIDE RT.	6A01005-042
	1	ANGLE, KEEL ATTACH, LT.	6A01359-003
	1	ANGLE, KEEL ATTACH, RT.	6A01359-002
	2	ANGLE, SISTER KEEL ATTACH	6A01359-001
	1	ANGLE, VERT., LT.	6A01359-023
	1	ANGLE, VERT., RT.	6A01359-022
	2	ANGLE, TOP RAIL ATTACH	6A01359-004
20	1	ASS'Y., BULK., #8	6A01000-035
	1	BULK., BTM. FWD.	6A01158-013
	1	BULK., BTM. RR.	6A01158-014
	1	BULK., SIDE, LT.	6A01005-043
	1	BULK., SIDE, RT.	6A01005-044
	1	ANGLE, KEEL ATTACH, LT.	6A01359-003
	1	ANGLE, KEEL ATTACH, RT.	6A01359-002
	2	ANGLE, SISTER KEEL ATTACH	6A01359-001
	1	ANGLE, TOP RAIL, LT.	6A01156-055
	1	ANGLE, TOP RAIL, RT.	6A01156-054
	2	PLATE, SEAL RAIL SLOT	6A01150-119
21	1	ASS'Y., BULK., #9 (LT. FLOAT)	6A01000-037
	1	ASS'Y., BULK., #9 (RT. FLOAT)	6A01000-036
	1	ANGLE, KEEL ATTACH, LT.	6A01359-025
	1	ANGLE, KEEL ATTACH, RT.	6A01359-024
	1	ANGLE, SISTER KEEL ATTACH, LT.	6A01359-027
	1	ANGLE, SISTER KEEL ATTACH, RT.	6A01359-026
	1	PANEL, SPR. BAR, LT. BULK. ONLY	6A01338-001
	1	PANEL, SPR. BAR, RT. BULK. ONLY	6A01338-002
	1	ANGLE, SIDE BULK., LT.	6A01357-001
	1	ANGLE, SIDE BULK., RT.	6A01357-002
	1	BULK. BTM., FWD.	6A01158-015
	1	BULK. BTM., AFT	6A01158-016
	1	BULK., TOP	6A01005-045
22	1	ASS'Y., BULK., #10	6A01000-038
	2	BULK. BTM.	6A01158-017
	1	BULK., SIDE, LT.	6A01005-047
	1	BULK., SIDE, RT.	6A01005-046
	1	ANGLE, KEEL ATTACH, LT.	6A01359-003

WIPLINE MODEL 6000 / 6100 FLOAT PARTS MANUAL

ITEM	QTY	FIGURE 2: HULL ASSEMBLY-STRAIGHT PART DESCRIPTION	PART NO.
22 (cont.)	1	ANGLE, KEEL ATTACH, RT.	6A01359-002
23	1	ASS'Y., BULK., #11	6A01000-039
	2	BULK. BTM.	8A01158-128
	1	BULK. TOP	6A01005-048
	1	ANGLE, KEEL ATTACH, LT.	6A01359-025
	1	ANGLE, KEEL ATTACH, RT.	6A01359-024
	1	ANGLE, SISTER KEEL ATTACH, LT.	6A01359-033
	1	ANGLE, SISTER KEEL ATTACH, RT.	6A01359-032
	2	ANGLE, TOP RAIL ATTACH	6A01359-004
24	1	ASS'Y., BULK. #11A	6A01000-040
	2	BULK., BTM.	8A01158-128
	1	BULK., TOP	6A01005-217
	1	ANGLE, KEEL ATTACH, LT.	6A01359-025
	1	ANGLE, KEEL ATTACH, RT.	6A01359-024
	1	ANGLE, SISTER KEEL ATTACH, LT.	6A01359-033
	1	ANGLE, SISTER KEEL ATTACH, RT.	6A01359-032
	2	ANGLE, TOP RAIL ATTACH	6A01359-004
	1	ANGLE, HORIZ. TUNNEL ATTACH	6A01359-034
25	1	ASS'Y., BULK., #11B	6S01000-042
	1	BULK., BTM AFT.	6S01158-112
	1	BULK., SIDE, LT.	6A01005-049
	1	BULK., SIDE, RT.	6A01005-050
	1	ANGLE, KEEL ATTACH, LT.	6A01359-035
	1	ANGLE, KEEL ATTACH, RT.	6A01359-036
	1	ANGLE, HORIZ.	6A01359-037
	1	BULKHEAD, BOTTOM, FWD	6S01158-111
26	1	ASS'Y., BULK., #12	6S01000-044
	1	BULK., BTM. FWD	6S01158-115
	1	BULK, BTM, AFT	6S01158-116
	1	BULK., TOP	6S01005-219
	1	ANGLE, SKIN ATTACH, LOWER LT.	6S01008-019
	1	ANGLE, SKIN ATTACH, LOWER RT.	6S01008-020
	1	ANGLE, VERT. INBD., LT.	6A01427-001
	1	ANGLE, VERT. INBD., RT.	6A01427-002
	1	ANGLE, SISTER KEEL ATTACH, LT.	6A01359-041
	1	ANGLE, SISTER KEEL ATTACH, RT.	6A01359-040
	1	ANGLE, HORIZ. TOP	6S01359-086
	1	ANGLE, HORIZ. LWR.	6A01359-039
	2	ANGLE, TOP RAIL ATTACH	6A01359-004

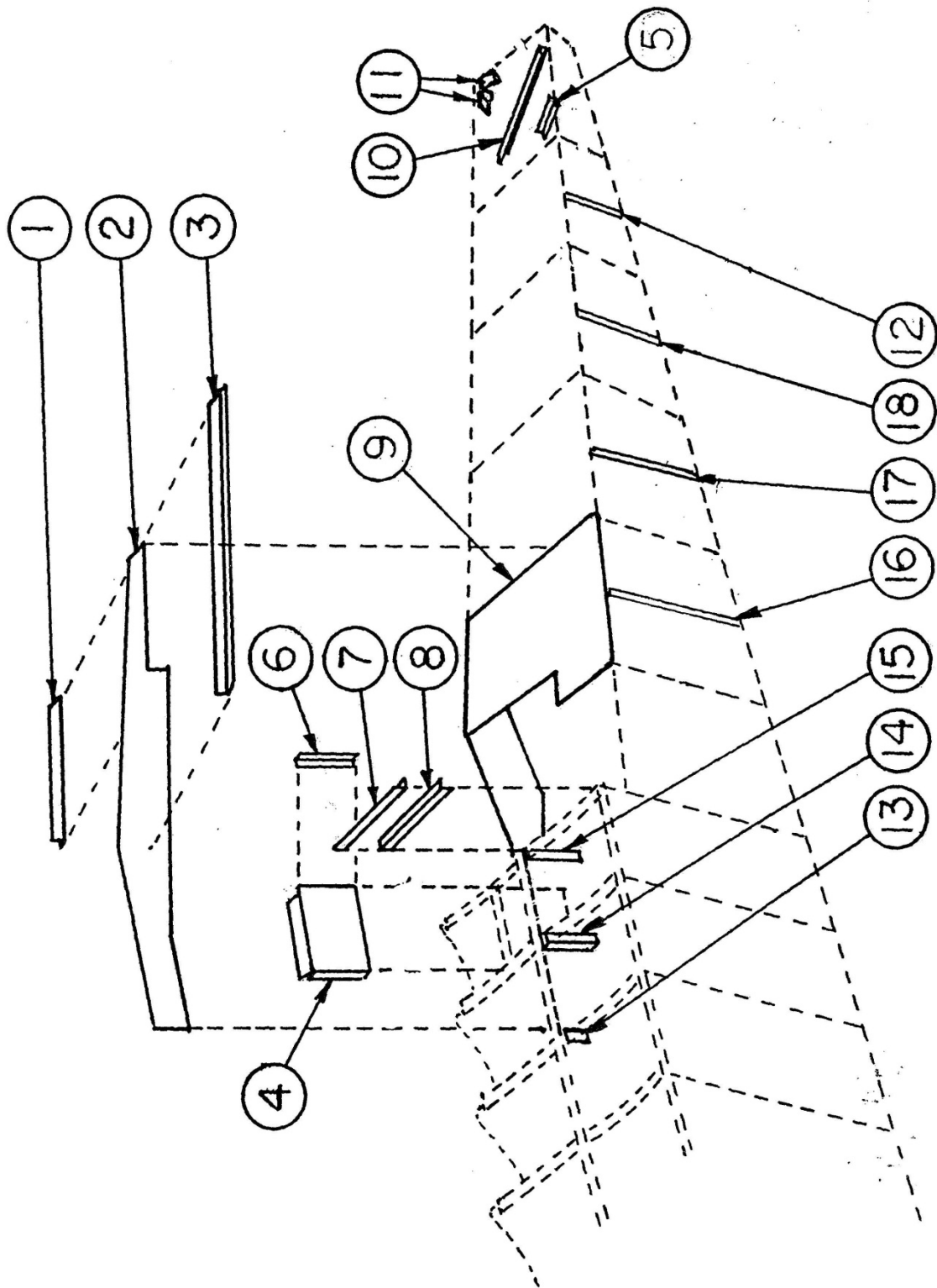
WIPLINE MODEL 6000 / 6100 FLOAT PARTS MANUAL

ITEM	QTY	FIGURE 2: HULL ASSEMBLY-STRAIGHT PART DESCRIPTION	PART NO.
27	1	ASS'Y., BULK., #13	6S01000-046
	1	BODY, BULK.	6S01002-032
	2	ANGLE, HORIZ. AND VERT.	6S01359-043
	2	ANGLE, RAIL ATTACH	6A01359-004
28	1	ASS'Y., BULK., #14 LT.	6A01000-047
		ASS'Y., BULK #14 RT	6A01000-176
	1	BODY, BULK.	6A01002-033
	6	ANGLE, RAIL ATTACH	6A01359-004
	1	BODY, BULK., RT	6A01002-120
	2	PIN, COTTER	MS24665-136
	2	BRACKET PULLEY	3A01151-010
29	1	ASS'Y., BULK., #15	6A01000-048
	1	BODY, BULK.	6A01002-034
	6	ANGLE, RAIL ATTACH	6A01359-004
	2	BRACKET PULLEY	3A01151-010
	2	PIN, COTTER	MS24665-136
	2	DOUBLER, CABLE	6A01156-069
30	1	ASS'Y., BULK., #16	6A01000-049
	1	BODY, BULK.	6A01002-035
	6	ANGLE, RAIL ATTACH	6A01359-004
31	1	ASS'Y., BULK., #17	6A01000-050
	1	BODY, BULK.	6A01002-036
	6	ANGLE, RAIL ATTACH	6A01359-004
	2	PIN, COTTER	MS24665-136
	2	DOUBLER, CABLE	6A01156-070
	2	BRACKET PULLEY	3A01151-010
32	1	ASS'Y., BULK., #18	6A01000-051
	1	BODY, BULK.	6A01002-037
	6	ANGLE, RAIL ATTACH	6A01359-004
	1	PIVOT, CASTING	3A01437-001
	1	ANGLE, TOP SKIN, REINF.	6A01352-004
	1	ANGLE, REINF.	6A01361-001
	1	ANGLE, REINF.	6A01361-002
	1	ANGLE, REINF.	6A01359-044
33	1	ASSY., FT., SPR. BAR PANEL, LT.	6A01000-053
	1	ASSY., FT., SPR. BAR PANEL, RT.	6A01000-052
	1	PANEL, FT. SPR. BAR, LT.	6A01338-003
	1	PANEL, FT. SPR. BAR, RT.	6A01338-004

WIPLINE MODEL 6000 / 6100 FLOAT PARTS MANUAL

ITEM	QTY	FIGURE 2: HULL ASSEMBLY-STRAIGHT PART DESCRIPTION	PART NO.
33(cont.)	1	ANGLE, FT. SPR. BAR PANEL, LT.	6A01357-003
	1	ANGLE, FT. SPR. BAR PANEL, RT.	6A01357-004
34	1	SPACER, CLEAT ATTACH	6A01156-015
35	1	PLATE, CLEAT ATTACH	6A01156-016
36	2	GUSSET STEP	6A01002-038
37	1	DOUBLER, TOP SKIN, AFT	6S01008-023
38	A/R	PLATENUT, TINNERMAN WITH TAPE	1002481
39	1	DOUBLER, TOP SKIN, FWD	6A01008-021
40	6	ASS'Y., INSPECTION COVER (10")	6A01000-456
41	1	ASS'Y., BAGGAGE COVER, METAL HINGE	6A01000-123
	1	ASS'Y., BAGGAGE COVER, PLASTIC HINGE	6A01000-073
	1	HINGE, CONT. (SHEPARD CO. - PASTIC)	1-1/2" BLACK HINGE
	2	LATCH (SOUTHCO)	6A01000-166
42	1	ASS'Y., COVER FLOAT DECK (8.75")	6A01000-072
43	1	ASS'Y., COVER FLOAT DECK (17.5")	6A01000-071
44	1	NOSE BUMPER	6S01731-001
	2	ANGLE, NOSE BUMPER ATTACH, SIDE	6A01359-051
	2	ANGLE, NOSE BUMPER ATTACH, BOTTOM	6A01359-113
45	1	DOUBLER, TOP SKIN, INSIDE	6S01003-019
46	2	SPACER, TOP SKIN AFT, SPR. BAR PANELS	6S01003-044
47	2	SPLASH GUARD (NOT SHOWN)	6A01008-074
48	1	BAGGAGE FLOOR (AFT HALF) LT.	6A01008-133
	1	BAGGAGE FLOOR (AFT HALF) RT.	6A01008-134
	1	BAGGAGE FLOOR (FWD HALF)	6A01008-139

SECTION 2: MISC. HULL PARTS

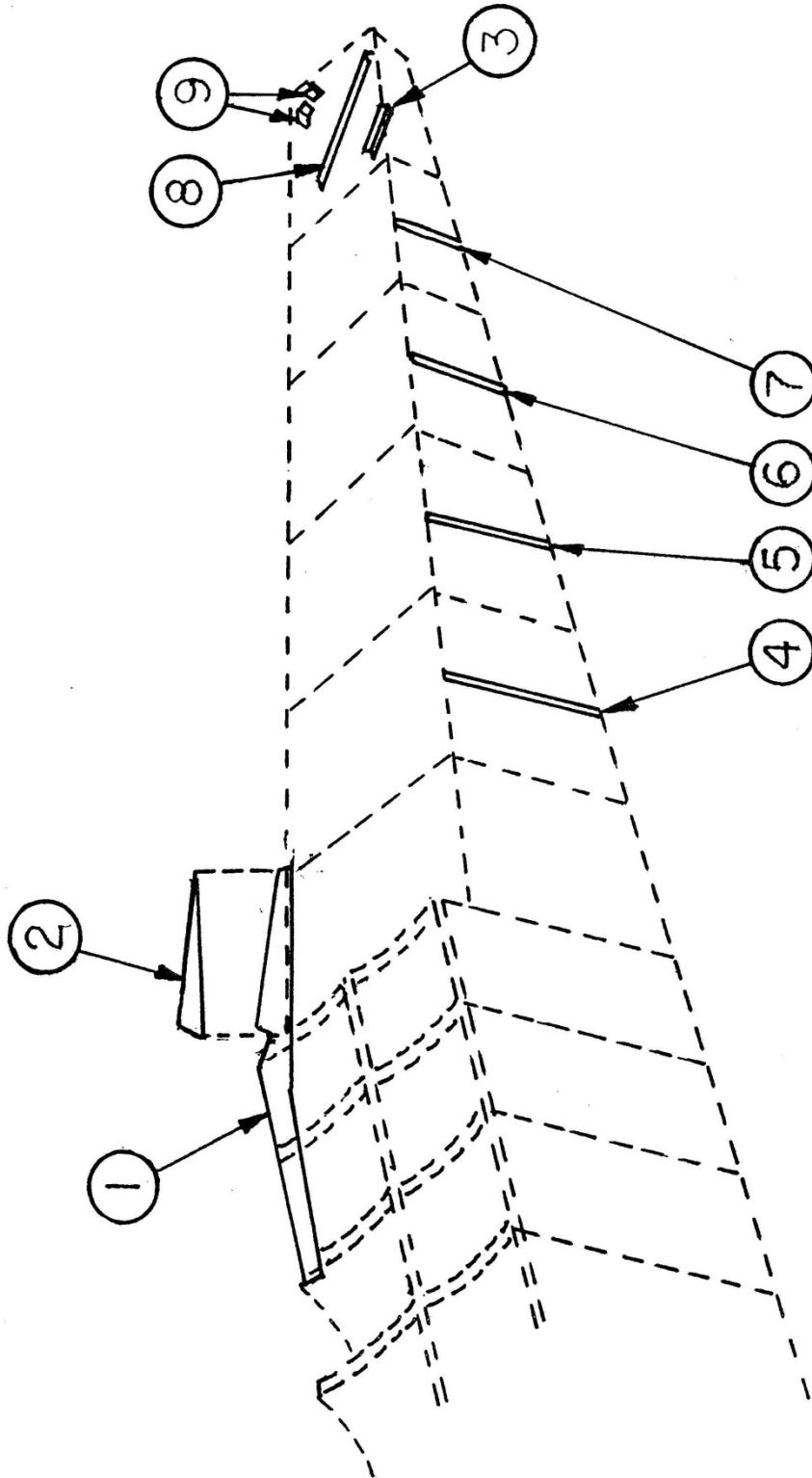


MISC. HULL PARTS - AMPHIBIAN

FIGURE 3

WIPLINE MODEL 6000 / 6100 FLOAT PARTS MANUAL

ITEM	QTY	FIGURE 3: MISC. HULL PARTS - AMPHIBIAN PART DESCRIPTION	PART NO.
1	1	ANGLE, CARRYTHRU STRAP, LT.	6A01008-011
	1	ANGLE, CARRYTHRU STRAP, RT.	6A01008-010
2	2	STRAP, CARRYTHRU	6A01001-003
3	1	ANGLE, CARRYTHRU STRAP OUTSIDE, LT.	6A01008-017
	1	ANGLE, CARRYTHRU STRAP OUTSIDE, RT.	6A01008-016
4	1	ASS'Y., DRAG BRACE PANEL, LT.	6A01000-063
	1	ASS'Y., DRAG BRACE PANEL, RT.	6A01000-062
5	1	ANGLE, TOP SKIN REINF.	6A01352-004
6	1	ANGLE, DRAG BRACE ATTACH, LT.	6A01183-001
	1	ANGLE, DRAG BRACE ATTACH, RT.	6A01183-002
7	1	ANGLE, OUTSIDE, AFT, LT.	6A01005-051
	1	ANGLE, OUTSIDE, AFT, RT.	6A01005-052
8	1	ANGLE, INSIDE, AFT, LT.	6A01008-055
	1	ANGLE, INSIDE, AFT, RT.	6A01008-056
9	1	PANEL, REINF.	6A01008-018
10	1	ANGLE, REINF. #18 BULK.	6A01359-044
11	1	ANGLE, REINF. #18 BULK. BTM. LT.	6A01361-001
	1	ANGLE, REINF. #18 BULK. BTM. RT.	6A01361-002
12	2	STIFFENER, SIDE	6A01151-047
13	2	SHIM, CARRYTHRU STRAP	6A01011-001
14	1	ANGLE, CARRYTHRU STRAP, LT.	6A01008-013
	1	ANGLE, CARRYTHRU STRAP, RT.	6A01008-012
15	1	ANGLE, CARRYTHRU STRAP, LT.	6A01008-015
	1	ANGLE, CARRYTHRU STRAP, RT.	6A01008-014
16	2	STIFFENER, SIDE	6A01151-050
17	2	STIFFENER, SIDE	6A01151-049
18	2	STIFFENED, SIDE	6A01151-048



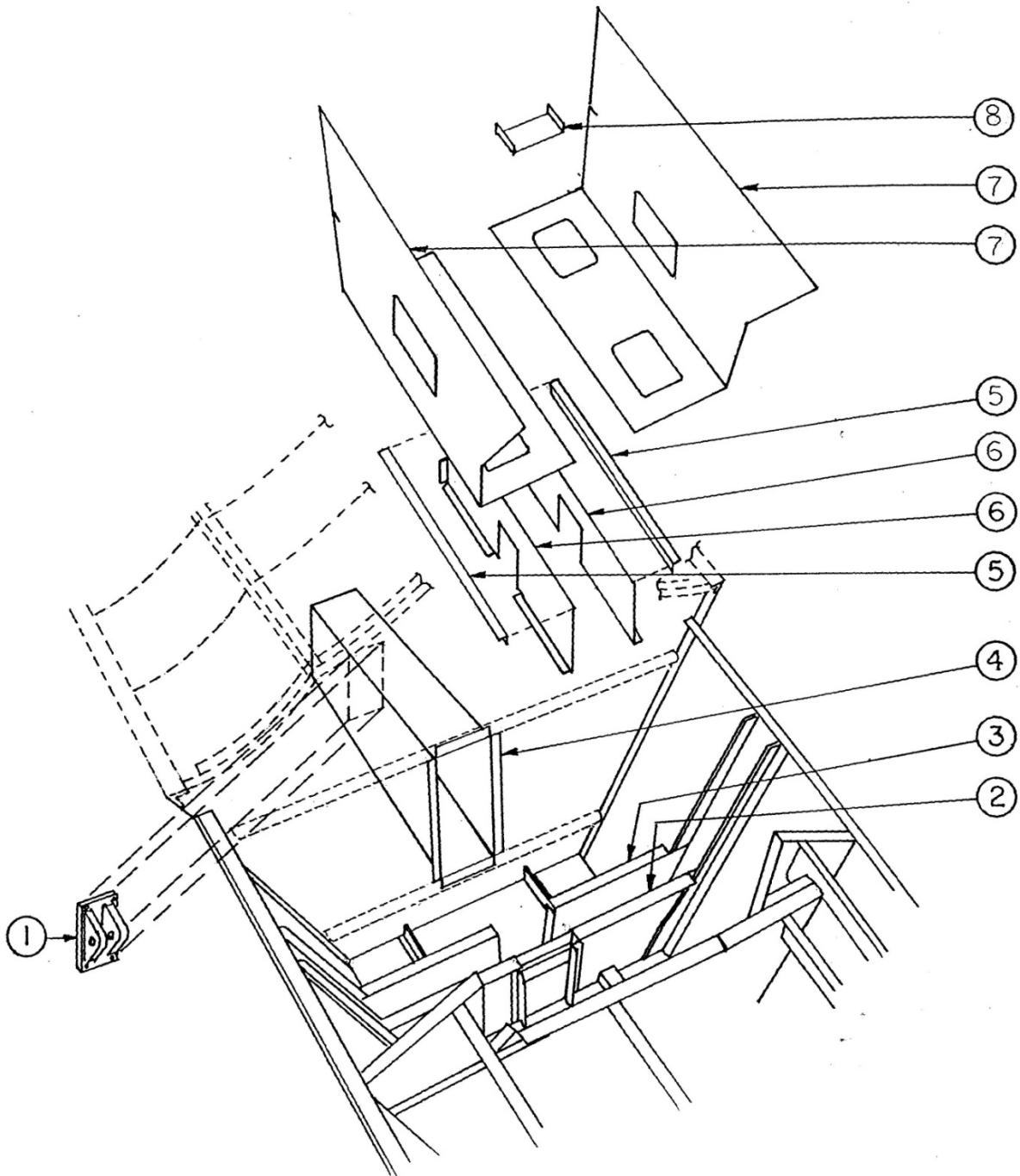
MISC. HULL PARTS – STRAIGHT
FIGURE 4

WIPLINE MODEL 6000 / 6100 FLOAT PARTS MANUAL

ITEM	QTY	FIGURE 4: MISC. HULL PARTS - STRAIGHT PART DESCRIPTION	PART NO.
1	2	STRAP, CARRYTHRU	6S01156-011
2	1	SPACER, CARRYTHRU STRAP	6S01156-012
3	1	ANGLE, TOP SKIN REINF.	6A01352-004
4	2	STIFFENER, SIDE	6A01151-050
5	2	STIFFENER, SIDE	6A01151-049
6	2	STIFFENER, SIDE	6A01151-048
7	2	STIFFENER, SIDE	6A01151-047
8	1	ANGLE, REINF. #18 BULK.	6A01359-044
9	1	ANGLE, REINF. #18 BULK. BTM. LT.	6A01361-001
	1	ANGLE, REINF. #18 BULK. BTM. RT.	6A01361-002

THIS PAGE INTENTIONALLY LEFT BLANK

SECTION 3: WHEEL WELL AREA



WHEEL WELL AREA
FIGURE 5

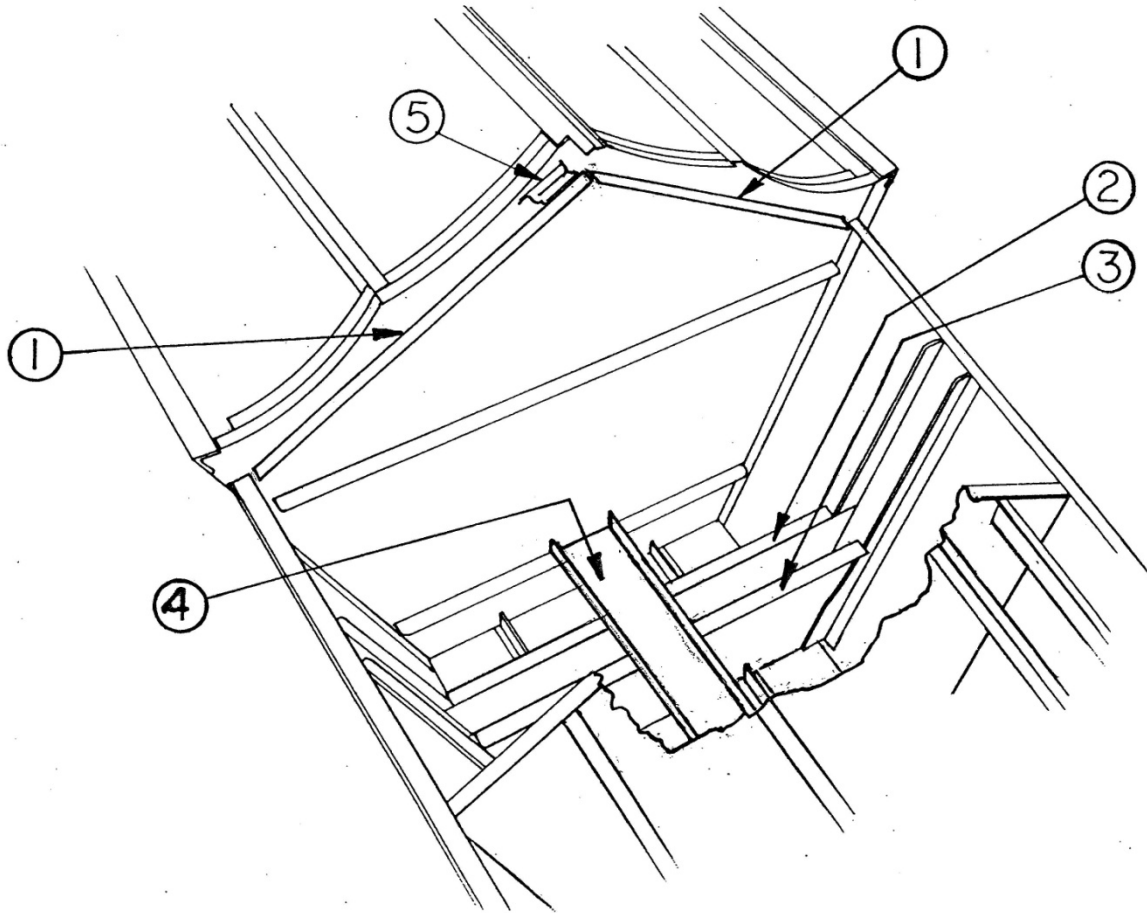
WIPLINE MODEL 6000 / 6100 FLOAT PARTS MANUAL

ITEM	QTY	FIGURE 5: WHEEL WELL AREA PART DESCRIPTION	PART NO.
1	2	ASS'Y., TRUNION MAIN GEAR	6A04000-054
	4	BEARING/BUSHING	08DU08
2	1	ASSY., RR. SPR. BAR PANEL AFT, LT.	6A01000-057
	1	ASSY., RR. SPR. BAR PANEL AFT, RT.	6A01000-056
	1	PANEL, RR. SPR. BAR, LT.	6A01338-009
	1	PANEL, RR. SPR. BAR, RT.	6A01338-010
	1	ANGLE, RR. SPR. BAR PANEL, LT.	6A01357-005
	1	ANGLE, RR. SPR. BAR PANEL, RT.	6A01357-006
	2	ANGLE, VERT. RR. SPR. BAR PANEL, LT.	6A01359-045
	2	ANGLE, VERT. RR. SPR. BAR PANEL, RT.	6A01359-046
3	1	ASS'Y., RR. SPR. BAR PANEL FWD, LT.	6A01000-055
	1	ASS'Y., RR. SPR. BAR PANEL FWD, RT.	6A01000-054
	1	PANEL, RR. SPR. BAR, FT. LT.	6A01338-005
	1	PANEL, RR. SPR. BAR, FT. RT.	6A01338-006
	1	ANGLE, RR. SPR. BAR PANEL, LT.	6A01357-007
	1	ANGLE, RR. SPR. BAR PANEL, RT.	6A01357-008
	2	ANGLE, VERT. RR. SPR. BAR PANEL, LT.	6A01359-045
	2	ANGLE, VERT. RR. SPR. BAR PANEL, RT.	6A01359-046
4	1	ASS'Y., TUNNEL	6A01000-064
	1	FTG., END CAP	6A01201-001
	1	COVER, TUNNEL	6A01005-054
	1	TUNNEL	6A01005-053
	2	ANGLE, TUNNEL	6A01340-015
	1	TOP, FWD	6A01005-062
	1	TOP, AFT	6A01005-063
5	1	ANGLE, WHEELWELL SUPPORT, LT.	6A01359-049
	1	ANGLE, WHEELWELL SUPPORT, RT.	6A01359-050
6	1	PANEL, WHEELWELL, VERT. LT.	6A01005-055
	1	PANEL, WHEELWELL, VERT. RT.	6A01005-056
7	1	ASS'Y., MAIN PANEL, WHEELWELL, LT.	6A01000-065
	1	ASS'Y., MAIN PANEL, WHEELWELL, RT.	6A01000-066
	1	COVER, INSPECTION, WHEELWELL, SM.	6A01158-152
	1	COVER, INSPECTION WHEELWELL, LG.	6A01158-151
	1	REINF., SM. COVER HOLE	6A01156-013
	1	REINF., LG. COVER HOLE	6A01156-014
	1	PANEL, WHEELWELL, LT.	6A01005-057
	1	PANEL, WHEELWELL, RT.	6A01005-058

WIPLINE MODEL 6000 / 6100 FLOAT PARTS MANUAL

ITEM	QTY	FIGURE 5: WHEEL WELL AREA PART DESCRIPTION	PART NO.
8	1	COVER, WHEELWELL SPR. BAR	6A01005-061

SECTION 4: STEP AREA – STRAIGHT FLOAT



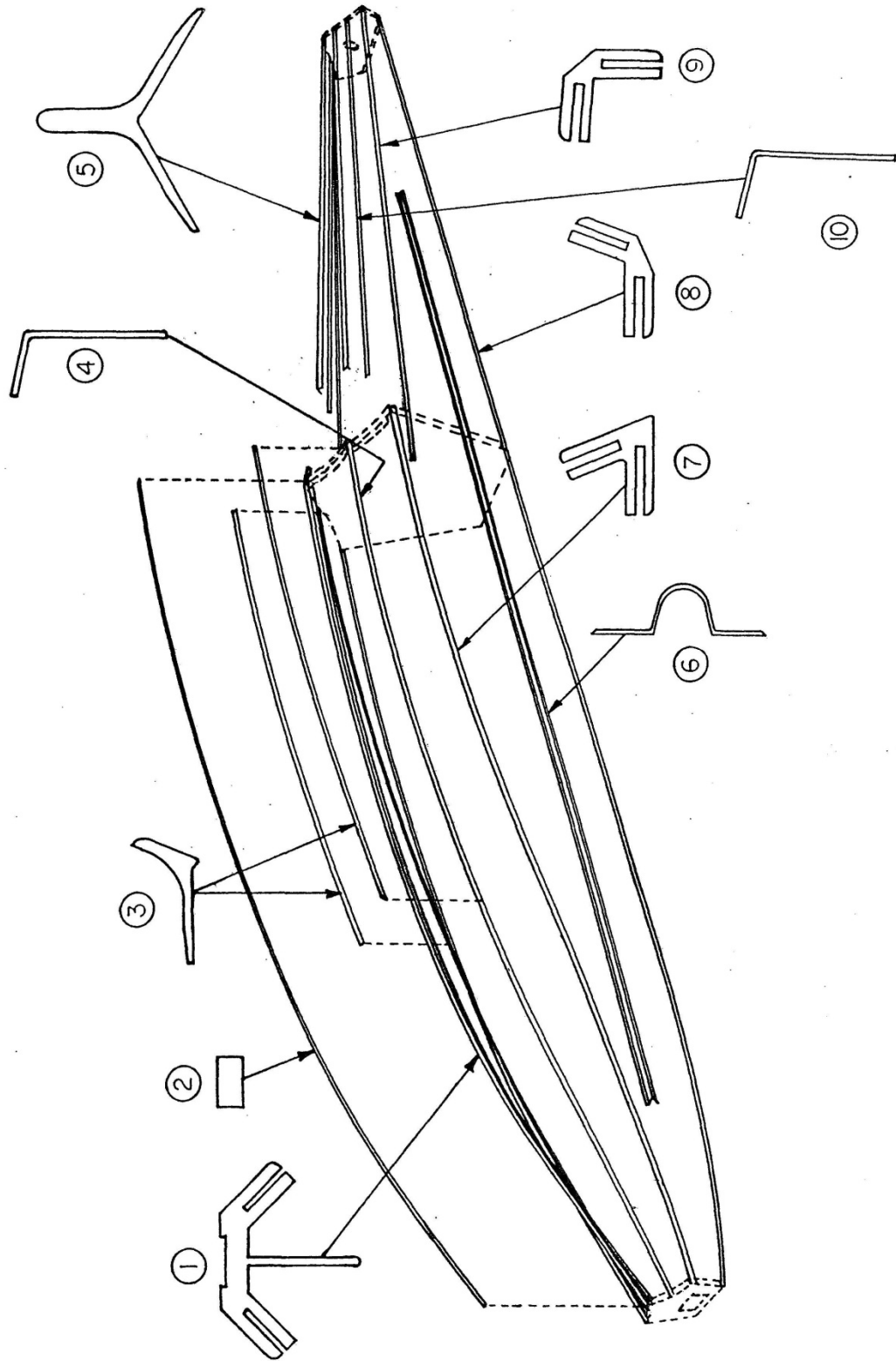
STEP AREA – STRAIGHT FLOAT
FIGURE 6

WIPLINE MODEL 6000 / 6100 FLOAT PARTS MANUAL

ITEM	QTY	FIGURE 6: STEP AREA – STRAIGHT PART DESCRIPTION	PART NO.
1	1	ANGLE, SKIN ATTACH, LOWER LT.	6S01008-019
	1	ANGLE, SKIN ATTACH, LOWER RT.	6S01008-020
2	1	ASS'Y., SPR. BAR PANEL, AFT, LT.	6S01000-059
	1	ASS'Y., SPR. BAR PANEL, AFT, RT.	6S01000-058
	1	PANEL, RR. SPR. BAR FT., LT.	6S01338-007
	1	PANEL, RR. SPR. BAR FT., RT.	6S01338-008
	1	ANGLE, SPR. BAR PANEL, AFT, LT.	6A01357-007
	1	ANGLE, SPR. BAR PANEL, AFT, RT.	6A01357-008
	2	ANGLE, VERT. SPR. BAR PANEL, AFT, LT.	6A01359-045
	2	ANGLE, VERT. SPR. BAR PANEL, AFT, RT.	6A01359-046
3	1	ASS'Y., SPR. BAR PANEL , AFT, LT.	6S01000-061
	1	ASS'Y., SPR. BAR PANEL , AFT, RT.	6S01000-060
	1	PANEL, SPR. BAR AFT, RR., LT.	6S01338-011
	1	PANEL, SPR. BAR AFT, RR., RT.	6S01338-012
	1	ANGLE, SPR. BAR PANEL, AFT, LT.	6A01357-005
	1	ANGLE, SPR. BAR PANEL, AFT, RT.	6A01357-006
	2	ANGLE, VERT. SPR. BAR PANEL, AFT, LT.	6A01359-045
	2	ANGLE, VERT. SPR. BAR PANEL, AFT, RT.	6A01359-046
4	1	CHANNEL, SUPPORT	6S01155-003
5	1	ANGLE, AB SKIN ATTACH UPR., LT.	6S01005-083
	1	ANGLE, AB SKIN ATTACH UPR., RT.	6S01005-082

THIS PAGE INTENTIONALLY LEFT BLANK

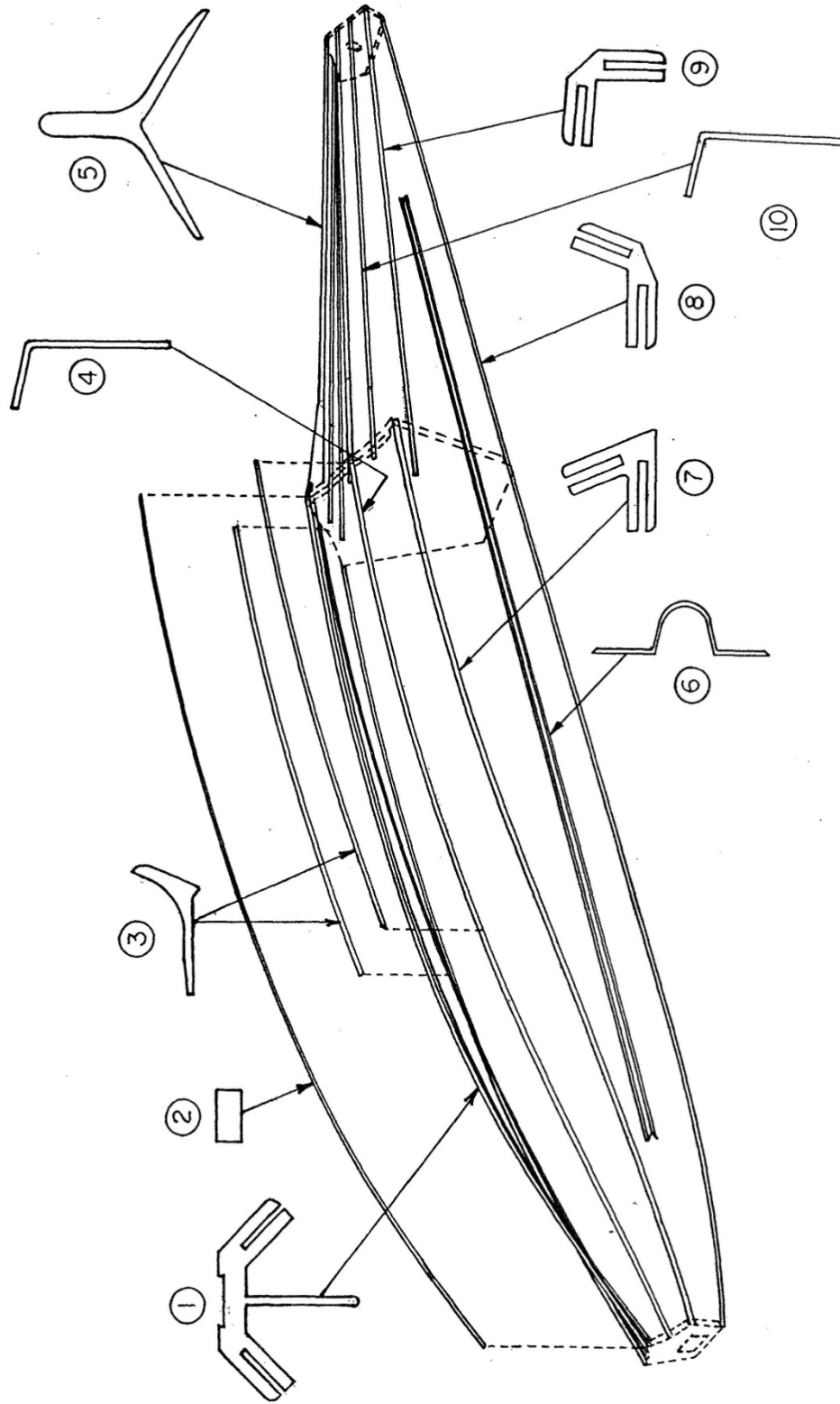
SECTION 5: HULL EXTRUSIONS



HULL EXTRUSIONS – AMPHIBIAN
FIGURE 7

WIPLINE MODEL 6000 / 6100 FLOAT PARTS MANUAL

ITEM	QTY	FIGURE 7: HULL EXTRUSIONS – AMPHIBIAN PART DESCRIPTION	PART NO.
1	1	KEEL, MAIN	6A01354-003
2	1	WEAR STRIP, KEEL	3A01200-001
3	1	SISTER KEEL, OUTSIDE LT.	6A01342-003
	1	SISTER KEEL, OUTSIDE RT.	6A01342-004
4	1	SISTER KEEL, INSIDE, FWD. LT.	6A01361-005
	1	SISTER KEEL, INSIDE, FWD. RT.	6A01361-004
5	1	KEEL, AB	6A01347-003
6	2	STIFFENER, SIDE SKIN, LT	6A01353-005
	2	STIFFENER, SIDE SKIN, RT	6A01353-004
7	1	CHINE, FT., LT.	6A01351-003
	1	CHINE, FT., RT.	6A01351-004
8	1	GUNWALL, LT.	8A01366-005
	1	GUNWALL, RT.	6A01366-006
9	1	CHINE, AB, LT.	6A01363-003
	1	CHINE, AB, RT.	6A01363-004
10	1	SISTER KEEL, AB, INBD. LT.	6A01361-007
	1	SISTER KEEL, AB, INBD. RT.	6A01361-006
	1	SISTER KEEL, AB, OTBD. LT.	6A01361-009
	1	SISTER KEEL, AB, OTBD. RT.	6A01361-008



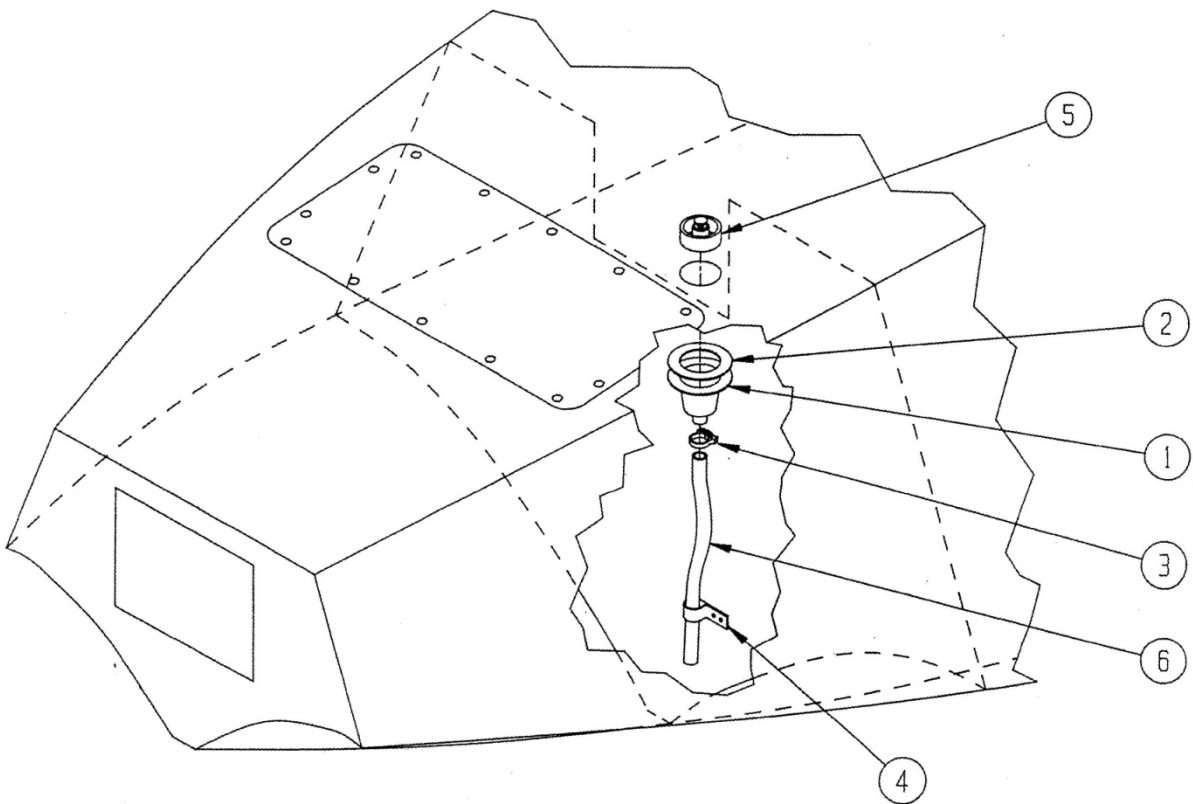
HULL EXTRUSIONS – STRAIGHT
FIGURE 8

WIPLINE MODEL 6000 / 6100 FLOAT PARTS MANUAL

ITEM	QTY	FIGURE 8: HULL EXTRUSIONS – STRAIGHT PART DESCRIPTION	PART NO.
1	1	KEEL, MAIN	6S01354-004
2	1	WEAR STRIP, KEEL	3A01200-001
3	1	SISTER KEEL, OUTSIDE LT.	6A01342-003
	1	SISTER KEEL, OUTSIDE RT.	6A01342-004
4	1	SISTER KEEL, INSIDE, FWD. LT.	6A01361-005
	1	SISTER KEEL, INSIDE, FWD. RT.	6A01361-004
5	1	KEEL, AB	6S01347-004
6	2	STIFFENER, SIDE SKIN, LT	6A01353-005
	2	STIFFENER, SIDE SKIN, RT	6A01353-004
7	1	CHINE, FT., LT.	6A01351-003
	1	CHINE, FT., RT.	6A01351-004
8	1	GUNWALL, LT.	8A01366-005
	1	GUNWALL, RT.	8A01366-006
9	1	CHINE, AB, LT.	6A01363-003
	1	CHINE, AB, RT.	6A01363-004
10	2	SISTER KEEL, AB, INBD. LT.	6S01361-011
	2	SISTER KEEL, AB, INBD. RT.	6S01361-010

THIS PAGE INTENTIONALLY LEFT BLANK

SECTION 6: PUMPER TUBES



PUMPER TUBES – STRAIGHT AND AMPHIBIAN
FIGURE 9

WIPLINE MODEL 6000 / 6100 FLOAT PARTS MANUAL

ITEM	QTY	FIGURE 9: PUMPER TUBES – STRAIGHT & AMPHIB. PART DESCRIPTION	PART NO.
1	1	CUP, PUMP OUT (OLD STYLE)	3A01650-002
	1	CUP, PUMP OUT (NEW STYLE)	4A01749-001
2	1	RING, REINF. PUMP OUT CUP	3A01158-005
3	1	CLAMP, UPPER END	57134
4	1	CLAMP, LOWER END	3A01158-003
5	1	ASSY. STOPPER PUMPER CUP (OLD STYLE)	3A01000-023
	1	STOPPER (NEW STYLE)	2111
6	1	PUMPER TUBE, 12", #17	6A01618-019
	1	PUMPER TUBE, 15 ½", #16	6A01618-018
	1	PUMPER TUBE, 19", #15	6A01618-017
	1	PUMPER TUBE, 22 ½", #14	6A01618-016
	1	PUMPER TUBE, 23 ½", STN WW.	6A01618-014
	1	PUMPER TUBE, 25 ¾", #5	6A01618-010
	1	PUMPER TUBE, 27 ½", #13	6A01618-015
	1	PUMPER TUBE, 31", #9	6A01618-011
	1	PUMPER TUBE, 31 ½", #11	6A01618-012
	1	PUMPER TUBE, 32 ½", #9 AND STEP	6A01618-013

THIS PAGE INTENTIONALLY LEFT BLANK

SECTION 7: INSTALLATION – STRUTS AND STEPS

WIPLINE MODEL 6000 / 6100 FLOAT PARTS MANUAL

ITEM	QTY	FIGURE 10: STRUTS AND STEPS PART DESCRIPTION	PART NO.
1		ASS'Y., RR. STRUT, LT.	6A02000-023
	1	STRUT, RR., LT.	6A02356-013
	1	FTG., RR. STRUT	6A02198-001
	16	SCREW	MS24694S145
		ASS'Y., RR. STRUT, RT.	6A02000-024
	1	STRUT, RR., RT.	6A02356-014
	1	FTG., RR. STRUT	6A02198-001
	16	SCREW	MS24694S145
2	1	STEP STRUT, LT.	6A02334-001
	1	STEP STRUT, RT.	6A02334-002
	4	BOLT (ATTACH)	AN4-17A
	8	WASHER	NAS1149F0432P
	4	NUT	MS21044N4
3	2	STEP, RR., LT.	6A02368-007
	2	STEP, RR., RT.	6A02368-008
	4	BOLT	AN3-17A
	4	WASHER	AN960-10
	4	NUT	AN365-1032
4	1	ASS'Y., SPR. BAR, FT.	6A03000-024
5	1	ASS'Y., SPR. BAR, AFT	6A03000-007
6		ASS'Y., FLY WIRE, AFT	6A02000-027
	1	TERMINAL, TIE ROD, CLEVIS KIT, RT. STAINLESS STEEL	AN665-202LS*
	1	NUT, STAINLESS STEEL	AN316C9R*
	1	TERMINAL, TIE ROD, CLEVIS KIT, LT. STAINLESS STEEL	AN665-202RS*
	1	NUT, STAINLESS STEEL	AN316C9L*
	2	PIN, CLEVIS	MS20392-8C31
			SPZP15MOD*
	2	WASHER	NAS1149F0963P
	2	COTTER PIN	MS24665-444
	1	FLY WIRE 74.75 IN	AN679AC-7475
7		ASS'Y. FITTING, STEP STRUT, RT.	6A02000-126
		ASS'Y. FITTING, STEP STRUT, LT.	6A02000-125
	1	FITTING, STEP STRUT, LOWER, RT.	6A02231-002
	1	FITTING, STEP STRUT, LOWER, LT.	6A02231-001
	4	SPACER	6A02607-001
	4	ROLL PIN	1001922
		<i>*DENOTES STAINLESS STEEL</i>	

WIPLINE MODEL 6000 / 6100 FLOAT PARTS MANUAL

ITEM	QTY	FIGURE 10: STRUTS AND STEPS PART DESCRIPTION	PART NO.
7(cont.)	8	BOLT	AN3-7A
	16	WASHER	NAS1149F0332P
	8	NUT	AN365-1032
	2	BRACKET, STEP STRUT, TOP SKIN	6A01156-018
	2	SPACER, BRACKET , STEP STRUT, TOP SKIN	6A01003-020
8	4	BUSHING, FT. STRUT, ROD END	6A02262-002
9		ASS'Y., FT. STRUT, LT. (MK I)	6A02000-029
	1	STRUT, FT., LT.	6A02356-017
	1	FTG., FT. STRUT, LWR. END	6A02198-003
	1	FTG., FT. STRUT, UPR. END	6A02198-004
	6	SCREW	MS24694S145
		ASS'Y., FT. STRUT, RT. (MK I)	6A02000-030
	1	STRUT, FT.,RT.	6A02356-018
	1	FTG., FT. STRUT, LWR. END	6A02198-003
	1	FTG., FT. STRUT, UPR. END	6A02198-004
	6	SCREW	MS24694S145
10		ASS'Y., FT. STRUT, LT. (MK III)	6A02000-031
	1	STRUT, FT., LT.	6A02356-019
	1	FTG., FT. STRUT, LWR. END	6A02198-003
	1	FTG., FT. STRUT, UPR. END	6A02198-002
	12	SCREW	MS24694S145
	1	FTG., CLEVIS, FT. STRUT, UPR. END	6A02204-002
	1	BUSHING, CLEVIS ATTACH	6A02273-003
	2	BOLT	AN6-32A
	2	WASHER	NAS1149F0663P
	2	NUT	MS21044N6
		ASS'Y., FT. STRUT, RT. (MK III)	6A02000-032
	1	STRUT, FT., RT.	6A02356-020
	1	FTG., FT. STRUT, LWR. END	6A02198-003
	1	FTG., FT. STRUT, UPR. END	6A02198-002
	12	SCREW	MS24694S145
	1	FTG., CLEVIS, FT. STRUT, UPR. END	6A02204-002
	1	BUSHING, CLEVIS ATTACH	6A02273-003
	2	BOLT	AN6-32A
	2	WASHER	NAS1149F0663P
	2	NUT	MS21044N6

WIPLINE MODEL 6000 / 6100 FLOAT PARTS MANUAL

ITEM	QTY	FIGURE 10: STRUTS AND STEPS PART DESCRIPTION	PART NO.
11	1	STEP, UPR. FT. LT. (MKI)	6A02368-005
	1	STEP, UPR. FT. RT. (MKI)	6A02368-006
	4	SPACER	6A02273-006
	4	BOLT	AN3-24A
	4	WASHER	NAS1149F0363P
	4	NUT	MS21044N4
12		ASS'Y., STRUT CTR. LT.	6A02000-033
	1	STRUT, CTR. LT.	6A02356-021
	1	FTG., CTR. STRUT LWR.	6A02198-003
	1	FTG., CTR. STRUT UPR.	6A02198-003
	12	SCREW	MS246945145
		ASS'Y., STRUT CTR. RT.	6A02000-034
	1	STRUT, CTR. RT.	6A02356-022
	1	FTG., CTR. STRUT LWR.	6A02198-003
	1	FTG., CTR. STRUT UPR.	6A02198-003
	12	SCREW	MS246945145
13	2	ASS'Y., FLY WIRE, FWD.	6A02000-028
	2	TERMINAL	AN665-115RS*
	2	TERMINAL	AN665-115LS*
	2	NUT	AN316C7L*
	2	NUT	AN316C7R*
		or	SP4ZK11MOD *
	4	PIN, CLEVIS	MS20392-6C25
	4	WASHER	NAS1149F0763P
	4	COTTER PIN	MS24665-300
14	1	STEP, LWR. FT. LT. (MK I)	6A02368-001
	1	STEP, LWR. FT. RT. (MK I)	6A02368-002
	1	STEP, LWR. FT., LT. (MK III)	6A02368-003
	1	STEP, LWR. FT., RT. (MK III)	6A02368-004
	4	BOLT	AN3-24A
	4	WASHER	NAS1149F0363P
	4	NUT	MS21044N4
15	2	ROD END, UPR., FT. STRUT (MK I)	HMX106
	2	JAM NUT	AN924-80
	2	BOLT	AN6-17A
	2	WASHER	NAS1149F0663P
	2	NUT	MS21044N6
		*DENOTES STAINLESS STEEL	

WIPLINE MODEL 6000 / 6100 FLOAT PARTS MANUAL

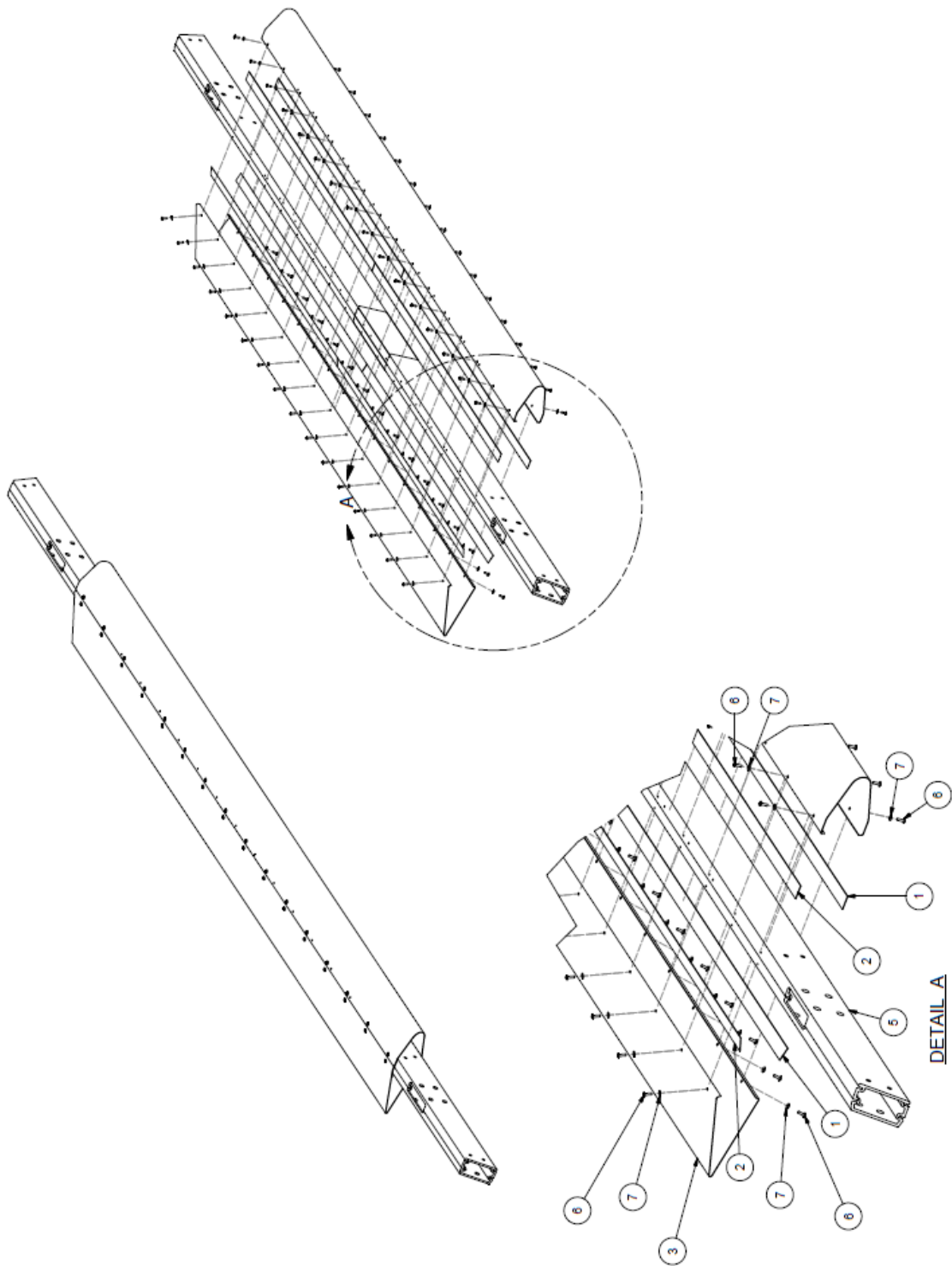
ITEM	QTY	FIGURE 10: STRUTS AND STEPS PART DESCRIPTION	PART NO.
16	1	JOINT, FT. STRUT LWR., RT.	6A02187-002
	1	JOINT, FT. STRUT LWR., LT.	6A02187-003
	4	BOLT	AN8-22A
	8	WASHER	NAS1149F0863P
	4	NUT	MS21044N8
17	2	FTG., FLOAT DECK FWD.	6A02362-007
18	2	BOLT	AN9-32A
	2	WASHER	NAS1149F0963P
	2	NUT	MS21044N9
19	1	JOINT, RR. STRUT, LWR. RT.	6A02187-004
	1	JOINT, RR. STRUT, LWR. LT.	6A02187-005
	2	BOLT (STRUT ATTACH)	AN9-22A
	2	WASHER	NAS1149F0963P
	2	NUT	MS21044N9
20	1	FTG., FLOAT DECK AFT (AMPHIB.)	6A02362-007
	1	FTG., FLOAT DECK AFT (SEAPLANE)	6S02362-008
21	2	BOLT, ATTACH	AN9-32A
	2	WASHER	NAS1149F0963P
	2	NUT	MS21044N9
22	2	FTG., CTR. STRUT, UPR.	6A02187-006
	2	BUSHING	6A02262-001
	2	BOLT (STRUT ATTACH)	AN8-22A
	2	WASHER	NAS1149F0863P
	2	NUT	MS21044N8
23	1	CLEVIS, BRACE WIRE, FT. LT.	6A02056-003
	1	CLEVIS, BRACE WIRE, FT. RT.	6A02056-004
24	2	BOLT	AN10-40A
	2	WASHER	NAS1149F1063P
	2	NUT	MS21044N10
25	2	FTG., RR. STRUT, UPR. END	6A02187-001
	2	BOLT (STRUT ATTACH)	AN9-22A
	2	WASHER	NAS1149F0963P
	2	NUT	MS21044N9

WIPLINE MODEL 6000 / 6100 FLOAT PARTS MANUAL

ITEM	QTY	FIGURE 10: STRUTS AND STEPS PART DESCRIPTION	PART NO.
26	1	CLEVIS, BRACE WIRE, RR. LT.	6A02056-001
	1	CLEVIS, BRACE WIRE, RR. RT.	6A02059-002
27	2	BOLT	AN10-40A
	2	WASHER	NAS1149F1063P
	2	NUT	MS21044N10
28	1	BRKT., STEP STRUT, RT.	6A02426-002
	1	BRKT., STEP STRUT, LT.	6A02426-001
	4	BOLT	AN4-5A
	4	WASHER	NAS1149F0432P
	4	NUT	???
29	4	STEP STRUT BUSHING	6A02606-003
	2	BOLT	AN4-17A
	4	WASHER	NAS1149F0432P
	2	NUT	MS21044N4
30	2	FTG.,CLEVIS BRACE WIRE AFT, LWR., RT. & LT.	6A02046-004
	2	BOLT	AN8-26A
	4	WASHER	NAS1149C0863R
	2	NUT	MS21044N8
31	2	FTG., CLEVIS BRACE WIRE FWD., LWR., RT. & LT.	6A02063-002
	2	CLEVIS BOLT	AN28-34A
	2	NUT	MS21083N8
	2	WASHER	NAS1149F0863P

THIS PAGE INTENTIONALLY LEFT BLANK

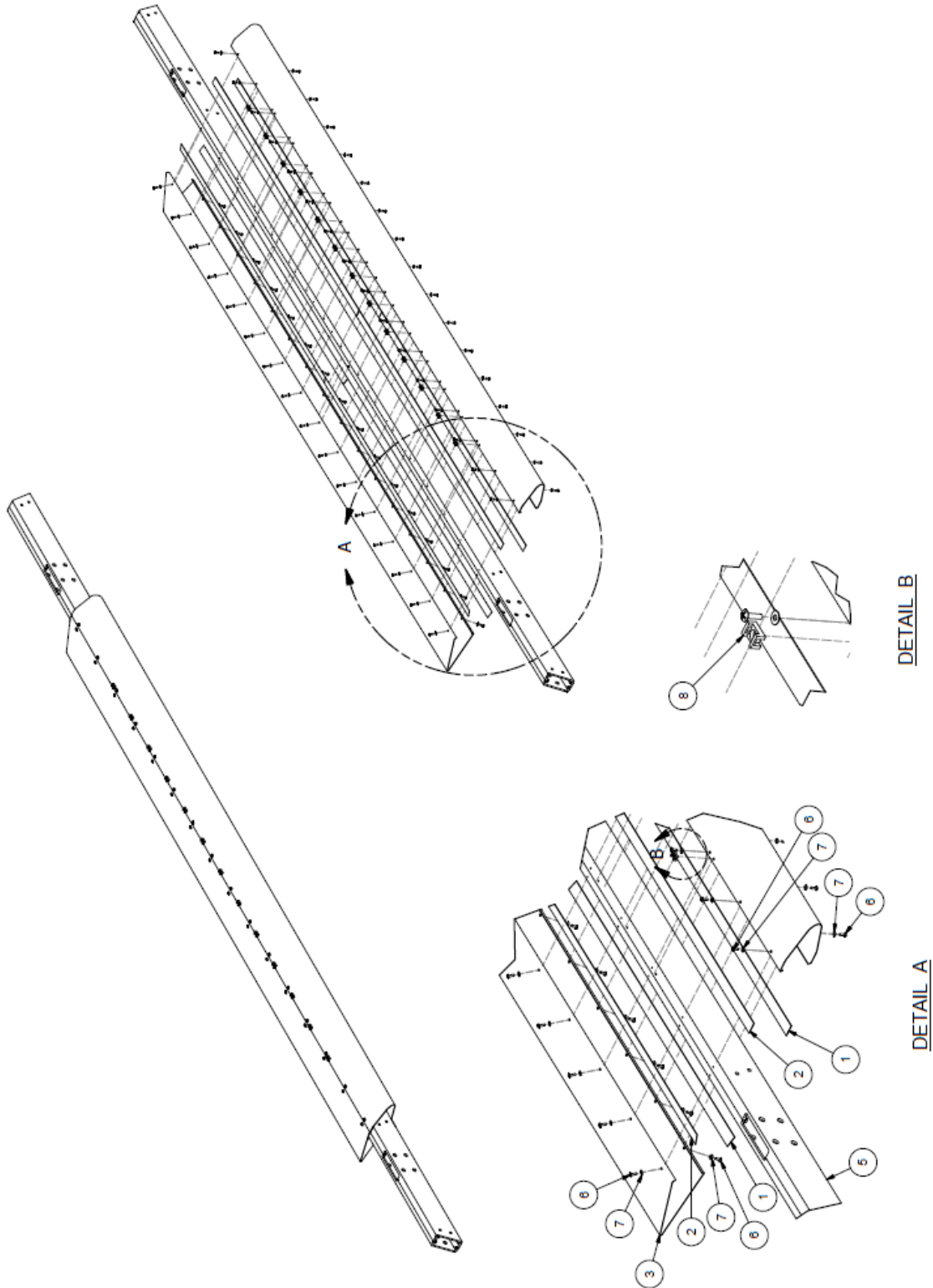
SECTION 8: INSTALLATION AND ASSEMBLY – SPREADER BAR



INSTALLATION AND ASS'Y – SPREADER BAR, AFT
FIGURE 11

WIPLINE MODEL 6000 / 6100 FLOAT PARTS MANUAL

FIGURE 11: SPREADER BAR ASS'Y, AFT			
ITEM	QTY	PART DESCRIPTION	PART NO.
		ASSY., SPR. BAR WITH FAIRINGS, AFT	6A03000-007
1	4	FILLER STRIP, FAIRING, BOTTOM	1005583
2	4	FILLER STRIP, FAIRING	6A03005-179
3	1	FAIRING, SPREADER BAR REAR	6A03158-028
4	1	FAIRING, SPREADER BAR FRONT	6A03158-029
5	1	SPREADER BAR	6A03358-001
6	64	SCREW, MACHINE, TRUSS HEAD	AN526C632R8
7	64	WASHER	NAS1149FN616P



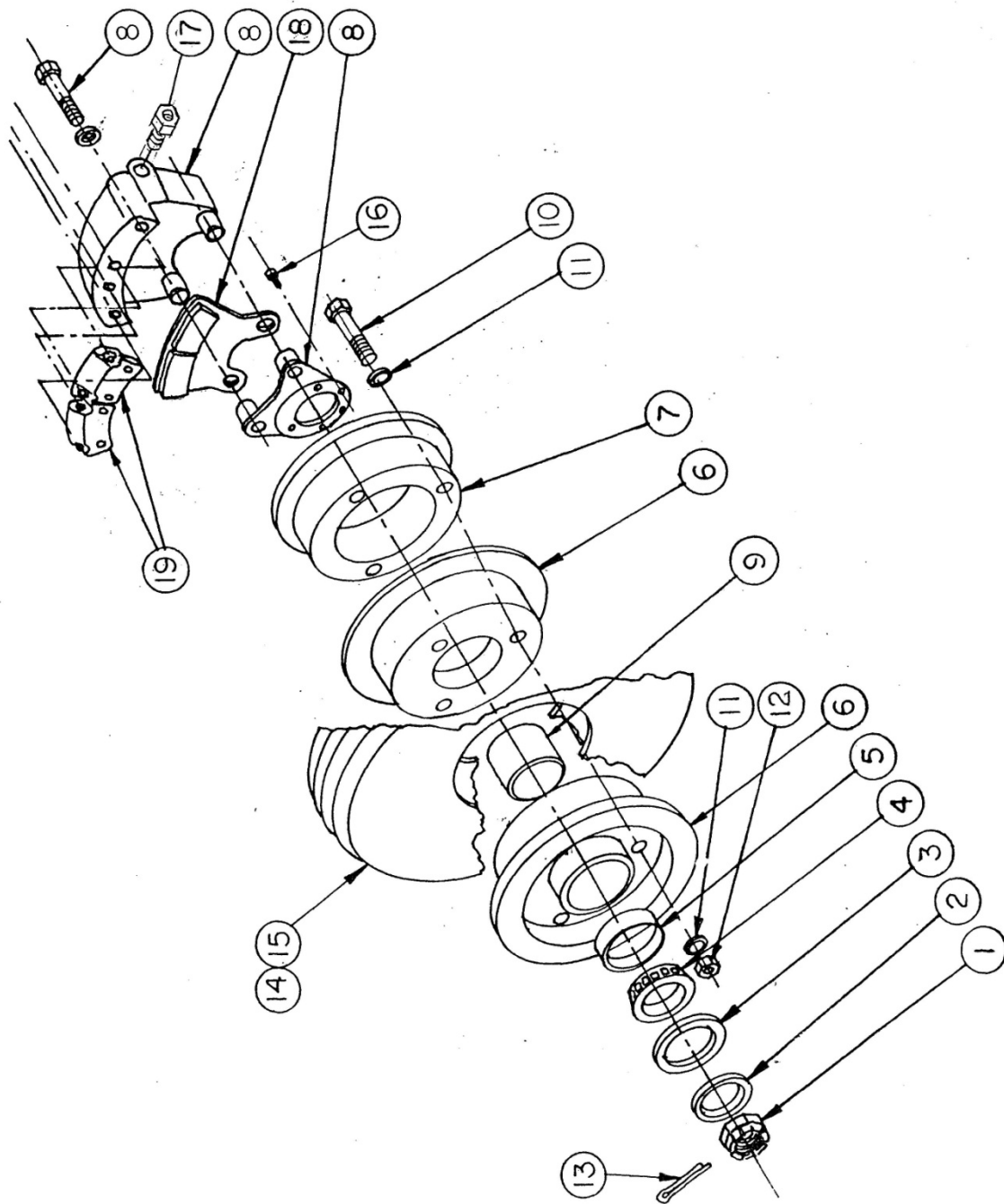
INSTALLATION AND ASS'Y – SPREADER BAR, FWD
FIGURE 11A

WIPLINE MODEL 6000 / 6100 FLOAT PARTS MANUAL

ITEM	QTY	FIGURE 11A: SPREADER BAR ASS'Y, FWD PART DESCRIPTION	PART NO.
		ASSY., SPR. BAR WITH FAIRINGS, FWD	6A03000-024
1	4	FILLER STRIP, FAIRING, BOTTOM	1005583
2	4	FILLER STRIP, FAIRING	6A03005-179
3	1	FAIRING, SPREADER BAR REAR	6A03158-028
4	1	FAIRING, SPREADER BAR FRONT	6A03158-029
5	1	SPREADER BAR	6A03358-001
6	64	SCREW, MACHINE, TRUSS HEAD	AN526C632R8
7	64	WASHER	NAS1149FN616P
8	13	TIE CLIP	TM2S6-M

THIS PAGE INTENTIONALLY LEFT BLANK

SECTION 9: MAIN GEAR WHEEL ASSEMBLY



MCCAULEY MANUFACTURED MAIN GEAR WHEEL ASS'Y
FIGURE 12

ITEM	QTY	FIGURE 12: MCCAULEY MAIN GEAR WHEEL ASS'Y PART DESCRIPTION	PART NO.
------	-----	---	----------

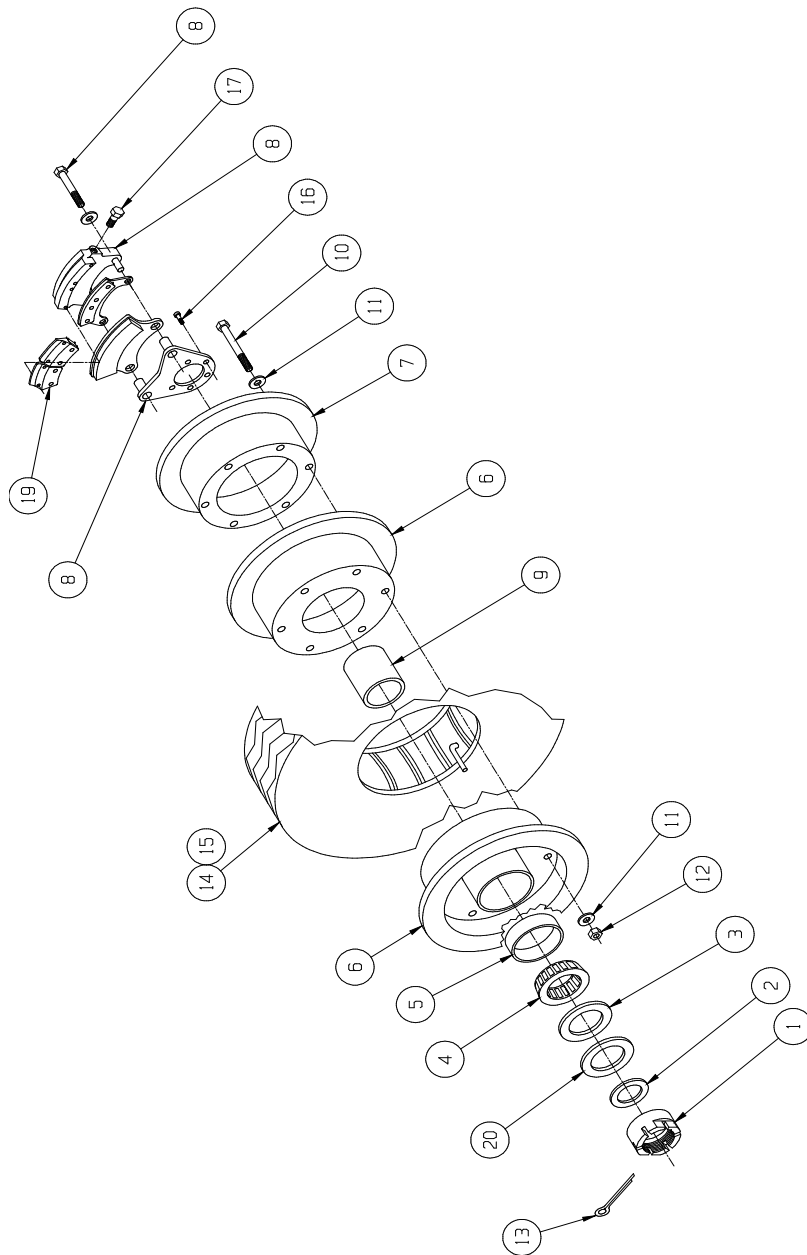
WIPLINE MODEL 6000 / 6100 FLOAT PARTS MANUAL

ITEM	QTY	FIGURE 12: MCCAULEY MAIN GEAR WHEEL ASS'Y PART DESCRIPTION	PART NO.
1	1	NUT, AXLE	MS21025-24
2	1	SPACER, MAIN GEAR AXLE	6A04093-002
3	1	SEAL, OUTSIDE	472439
	1	SEAL, INSIDE	473232
4	2	BEARING CONE, INSIDE AND OUTSIDE	LM29749
		BEARING CONE, CHROME PLATED (OPT.)	LM29710CP
5	2	BEARING CUP, INSIDE AND OUTSIDE	LM29710
		BEARING CUP, CHROME PLATED (OPT.)	LM29710CP
6	1	ASS'Y. WHEEL, COMPLETE	D-30660-05 (40-418)
7	1	BRAKE DISC	164-30615-3
8	1	ASS'Y. BRAKE, COMPLETE LT.	D-30793-3 (30-241)
	1	ASS'Y. BRAKE, COMPLETE RT.	D-30793-4 (30-241)
	1	BRAKE TORQUE PLATE	075-30107-1
	1	BRAKE TORQUE PLATE	075-30107-2
	4	BRAKE PADS	066-30026
	8	RIVETS	105-00200
	4	BOLTS (FOR PADS)	AN4H21A
	2	"O" RING CYL.	MS28775-222
	1	PRESS PLATE	073-30113
	2	BRAKE PLATE ASS'Y WITH LINING	074-30027
	1	BLEEDER FTG.	081-30169
	1	BLEEDER SCREW	079-00300
	1	BLEEDER CAP	183-00100
	2	PISTON	062-30161
	2	PISTON O RING	MS28775-222
	1	"O" RING BLEEDER	MS28775-011
9	1	GREASE RETAINER	6A04616-002
10	3	BOLT, WHEELHALF	AN5-37A
11	6	WASHER	NAS1149F0532P
12	3	NUT	MS21044N5
13	1	COTTER PIN	MS24665-353
14	1	TIRE 6:00 X 6 8 PLY (TYPE III)	AA1E6

WIPLINE MODEL 6000 / 6100 FLOAT PARTS MANUAL

ITEM	QTY	FIGURE 12: MCCAULEY MAIN GEAR WHEEL ASS'Y PART DESCRIPTION	PART NO.
15	1	TUBE	XA1AD
16	2	CAP SCREW	MS16997-96
	2	CAP SCREW	MS16997-77
17	1	FTG., BRAKE LINE	6A04258-004
	1	FTG. 45Ø	MS20823-4D
	1	"O" RING	MS28775-011
18	1	PRESSURE PLATE W/PADS	073-30113
19	2	BACK PLATES W/PADS	074-30027

THIS PAGE INTENTIONALLY LEFT BLANK



CLEVELAND/PARKER MANUFACTURED MAIN GEAR WHEEL ASS'Y
FIGURE 12A

WIPLINE MODEL 6000 / 6100 FLOAT PARTS MANUAL

ITEM	QTY	FIGURE 12A:CLEVELAND/PARKER MAIN GEAR WHEEL ASS'Y PART DESCRIPTION	PART NO.
	4	WHEEL ASS'Y W/ TIRE & TUBE	8A04000-031
1	1	NUT-AXLE	MS21025-24
2	2	RING-WHEEL RETAINER	6A04093-002
3	1	SEAL-OUTSIDE (DRILL #50 HOLE, OUTSIDE FACE)	472439
	1	SEAL-INSIDE	473232
4	2	BEARING-CONE (CLEVELAND)	13889
5	2	BEARING-CUP (CLEVELAND)	13836
6	4	WHEEL ASSEMBLY-COMPLETE (CLEVELAND)	40-418
		WHEEL ASSEMBLY COMPLETE (WITH CHROME BRAKE DISC)	40-418-3
7	1	BRAKE DISC	164-24500
		BRAKE DISC, CHROME PLATED	164-24501
8	4	BRAKE ASSEMBLY-COMPLETE	30-241
	2	BRAKE ASSEMBLY-COMPLETE (RIGHT)	6A04000-104
	2	BRAKE ASSEMBLY-COMPLETE (LEFT)	6A04000-105
	1	BRAKE TORQUE PLATE	075-20700
	2	BUSHING	145-01000
	4	BRAKE PADS (ONLY)(NEW STYLE)	066-10500
		OLD STYLE BRAKE PADS	066-30026
	4	BOLTS (BRAKE PADS)	MS21250HO4026
	4	BRAKE PAD BOLT WASHERS	MS20002CH
	8	RIVETS (BRAKE PADS)	105-00200
	1	BLEEDER SEAT	081-00200
	1	BLEEDER SCREW	079-00300
	1	BLEEDER CAP	183-00100
	2	ANCHOR BOLT	069-03100
	2	PISTON	062-10700
	2	"O" RING PISTON	MS28775-222
	1	"O" RING BLEEDER	MS28775-012
9	1	RETAINER-GREASE	067-14700
10	6	BOLT – WHEEL HALF	AN5-35A
11	12	WASHER	NAS1149D0563J

WIPLINE MODEL 6000 / 6100 FLOAT PARTS MANUAL

ITEM	QTY	FIGURE 12A:CLEVELAND/PARKER MAIN GEAR WHEEL ASS'Y PART DESCRIPTION	PART NO.
12	6	NUT	MS21042-5
13	1	COTTER PIN	MS24665-353
14	1	TIRE-6:00 X 6 8 PLY (TYPE III)	AA1E6
15	1	TUBE	XA1AD
16	2	CAP SCREW	MS16997-96
	2	CAP SCREW	MS16997-77
17	2	FITTING	104-04700
	1	"O" RING	MS28775-011
18	2	PRESSURE PLATE (W/PADS)	073-04200
19	4	BACK PLATE (W/PADS)	074-02900
20	2	SNAP RING	155-14300

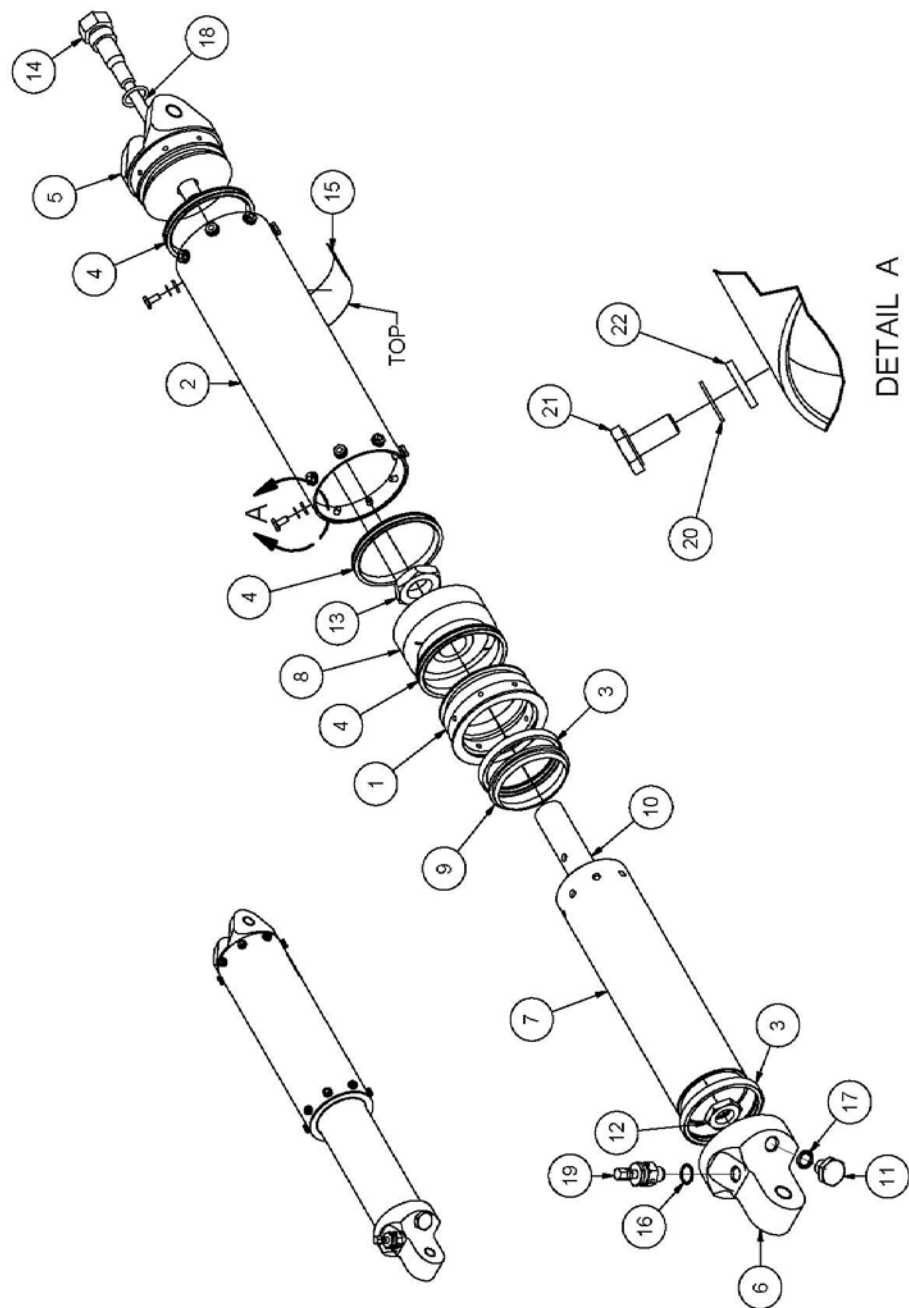
SECTION 10: MAIN GEAR AXEL ASSEMBLY

WIPLINE MODEL 6000 / 6100 FLOAT PARTS MANUAL

FIGURE 13: MAIN GEAR AXEL ASS'Y			
ITEM	QTY	PART DESCRIPTION	PART NO.
	1	ASS'Y., MAIN GEAR AXLE	6A04000-015
1	1	DRAG BRACE (FACTORY REPLACE ONLY)	6A04311-001
2	2	BOLT	AN8-24A
3	2	WASHER	NAS1149D0863J
4	3	NUT	MS21044N8
5	2	BEARING	08DU12
6	2	BOLT	AN6-13A
7	1	BOLT	AN6-46A
8	2	CLIP, BRAKE LINE	6A04008-024
9	8	WASHER	NAS1149D0663J
	2	WASHER	NAS1149D0616J
10	5	NUT	MS21044N6
11	2	BOLT	AN6-43A
12	1	TUBE, DRAG LINK (FACTORY REPLACE ONLY)	6A04297-001
13	1	ASS'Y., AXLE (FACTORY REPLACE ONLY)	6A04000-016
		NOTE: MAIN GEAR AXLE NOT AVAILABLE – CAN BE REPLACED ONSITE AT WIPAIRE	6A04510-001
14	1	BOLT	AN8-42A
15	2	BEARING	08DU08
16	1	INSERT-AXLE GREASE (1.150 DIA.)	6A04263-002
	2	"O" RING	MS28775-213
	1	GREASEZERK	1095K41
	1	INSERT-AXLE GREASE (1.230 DIA.)	6A04263-003
	2	"O" RING	MS28775-214
	1	GREASEZERK	1095K41
	1	INSERT-AXLE GREASE (1.020 DIA.)	6A04263-004
	2	"O" RING	MS28775-210
	1	GREASEZERK	1095K41

THIS PAGE INTENTIONALLY LEFT BLANK

SECTION 11: OLEO SHOCK STRUT ASSEMBLY

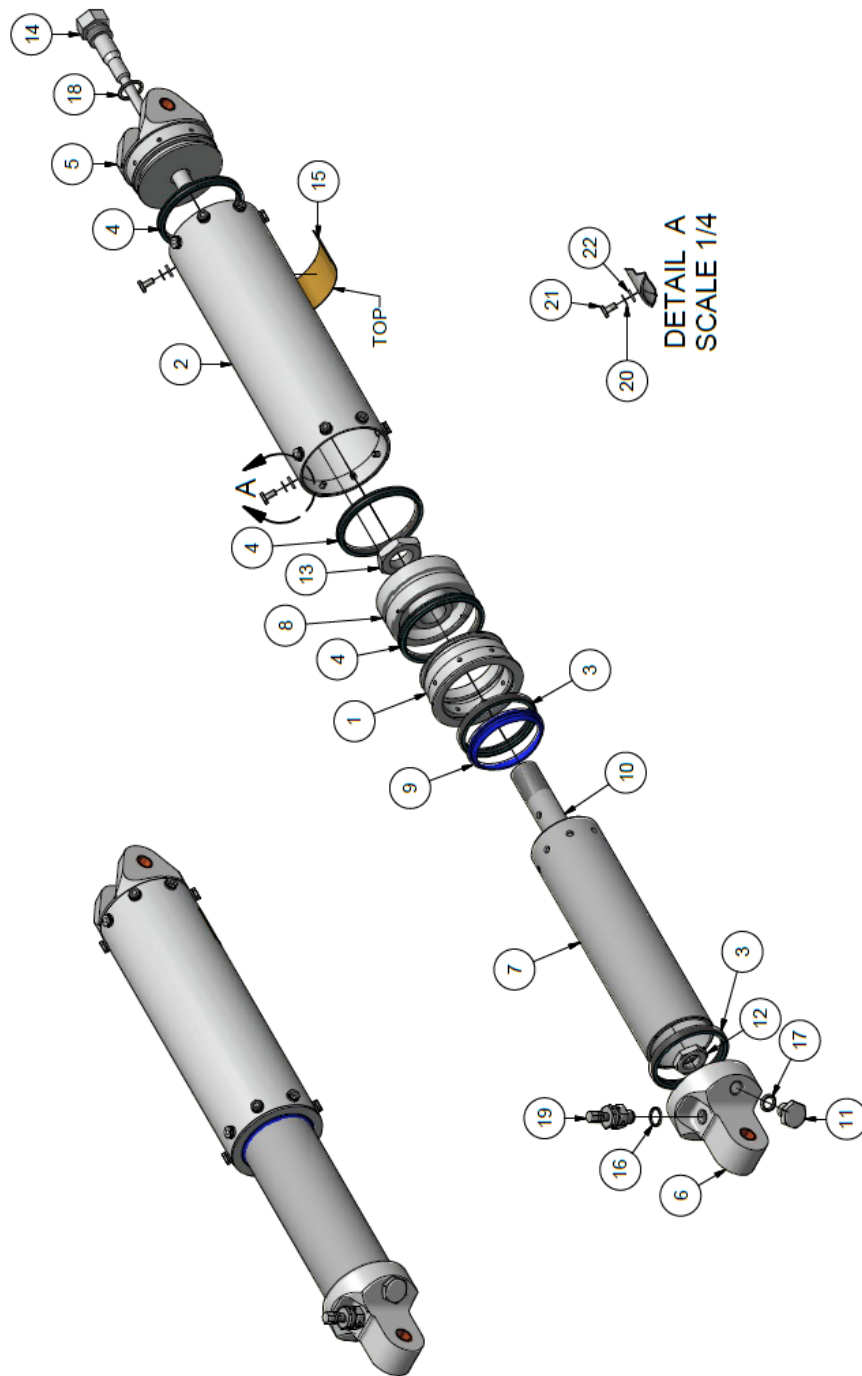


OLEO SHOCK STRUT ASS'Y (T-SEALS INSTALLED)

FIGURE 14

WIPLINE MODEL 6000 / 6100 FLOAT PARTS MANUAL

FIGURE 14: OLEO SHOCK STRUT ASS'Y (T-SEALS)			
ITEM	QTY	PART DESCRIPTION	PART NO.
	1	ASS'Y, OLEO SHOCK STRUT	1002068
1	1	GLAND - OUTER CYL - SHOCK STRUT	1002017
2	1	CYLINDER, OUTER, SHOCK STRUT, 6100	1002018
3	2	ROD, T-SEAL	1002027
4	3	T-SEAL	1002028
5	1	CAP, END, SHOCK STRUT, W/BUSHINGS	1002650
6	1	CAP, TOP, SHOCK STRUT, W/BUSHINGS	1002651
7	1	CYLINDER, INNER, SHOCK STRUT, 6100	1002653
8	1	PISTON, SHOCK STRUT, 8000	1002654
9	1	WIPER, SHOCK STRUT, 8000, T-SEAL	1005861
10	1	ROD - PISTON, SHOCK STRUT	6A04270-001
11	1	PLUG SHOCK STRUT	6A04271-003
12	1	NUT, CHECK, SHOCK STRUT	6A04275-001
13	1	NUT, CHECK, SHOCK STRUT	6A04276-001
14	1	PIN - METERING	6P04261-007
15	1	PLACARD, HYDRAULIC CYLINDER	8A3-5086
16	1	"O" RING	MS28775-015
17	1	"O" RING	MS28775-111
18	1	"O" RING	MS28775-116
19	1	VALVE	MS28889-2
20	16	STAR WASHER	MS35333-39
21	16	BOLT	NAS1103-2
22	16	WASHER	NAS1149D0363J



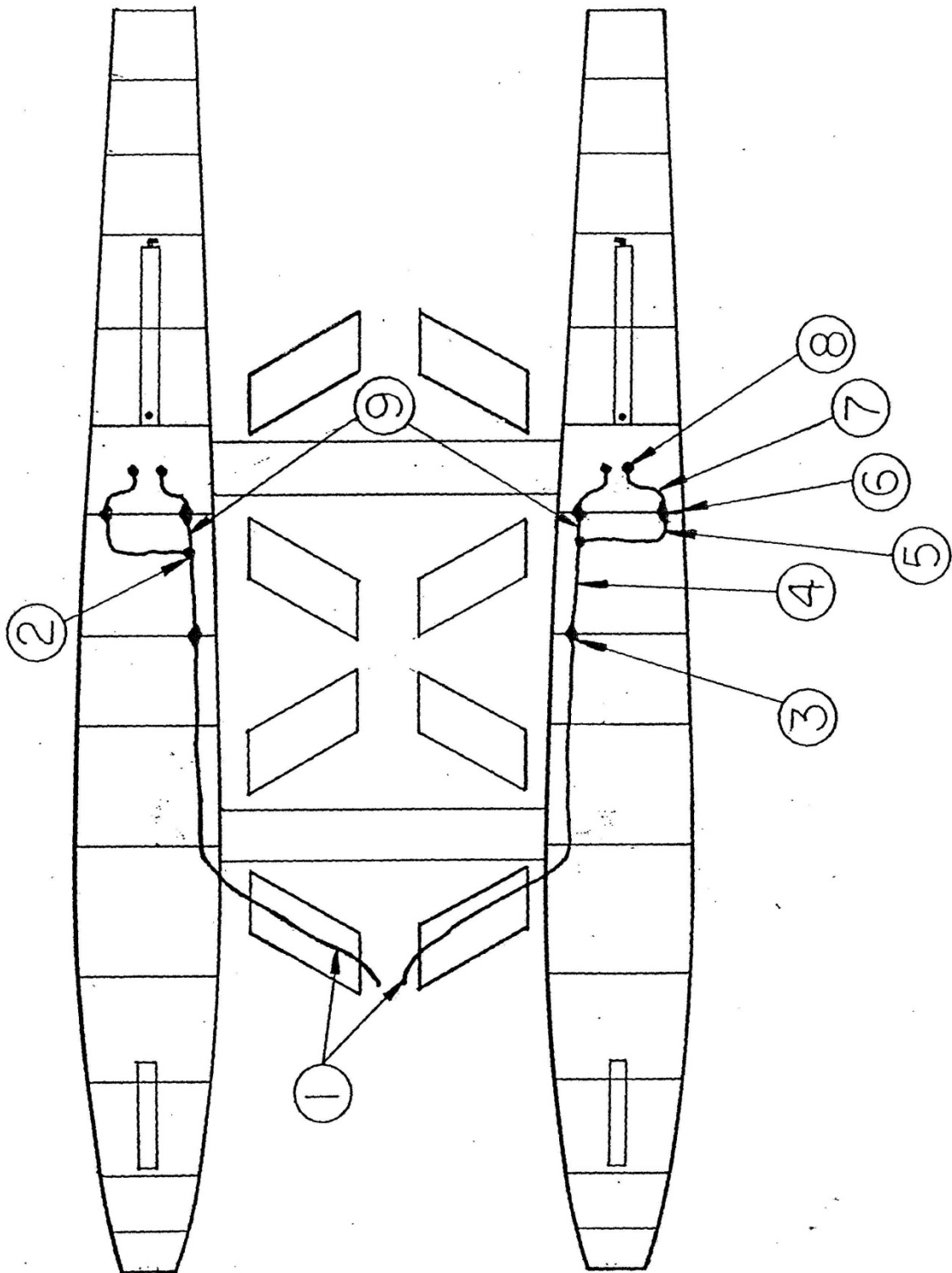
OLEO SHOCK STRUT ASS'Y (O-RINGS INSTALLED)
FIGURE 15

WIPLINE MODEL 6000 / 6100 FLOAT PARTS MANUAL

ITEM	QTY	FIGURE 15: OLEO SHOCK STRUT ASS'Y (O-RINGS) PART DESCRIPTION	PART NO.
	1	ASS'Y., OLEO SHOCK STRUT	1002068
1	1	GLAND - OUTER CYL - SHOCK STRUT	1002017
2	1	CYLINDER, OUTER, SHOCK STRUT, 6100	1002018
3	2	ROD, T-SEAL	1002027
4	3	T-SEAL	1002028
5	1	CAP, END, SHOCK STRUT, W/BUSHINGS	1002650
6	1	CAP, TOP, SHOCK STRUT, W/BUSHINGS	1002651
7	1	CYLINDER, INNER, SHOCK STRUT, 6100	1002653
8	1	PISTON, SHOCK STRUT, 8000	1002654
9	1	WIPER, SHOCK STRUT, 8000, T-SEAL	1005861
10	1	ROD - PISTON, SHOCK STRUT	6A04270-001
11	1	PLUG SHOCK STRUT	6A04271-003
12	1	NUT, CHECK, SHOCK STRUT	6A04275-001
13	1	NUT, CHECK, SHOCK STRUT	6A04276-001
14	1	PIN - METERING	6P04261-007
15	1	PLACARD, HYDRAULIC CYLINDER	8A3-5086
16	1	"O" RING	MS28775-015
17	1	"O" RING	MS28775-111
18	1	"O" RING	MS28775-116
19	1	VALVE	MS28889-2
20	16	STAR WASHER	MS35333-39
21	16	BOLT	NAS1103-2
22	16	WASHER	NAS1149D0363J

THIS PAGE INTENTIONALLY LEFT BLANK

SECTION 12: HYDRAULIC BRAKE SCHEMATIC



HYD. BRAKE SCHEMATIC

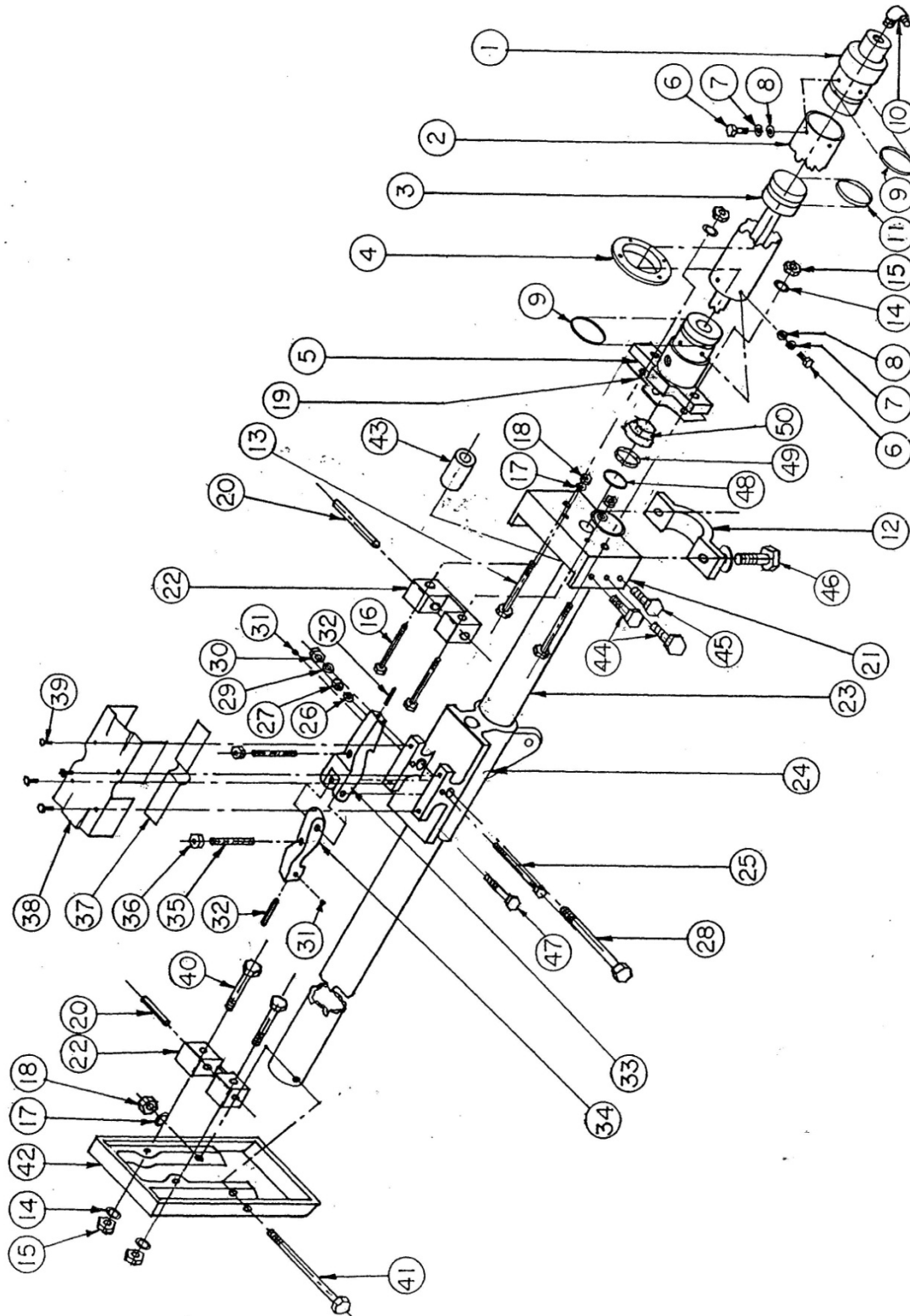
FIGURE 16

WIPLINE MODEL 6000 / 6100 FLOAT PARTS MANUAL

FIGURE 16: HYD. BRAKE SCHEMATIC			
ITEM	QTY	PART DESCRIPTION	PART NO.
1	2	ASS'Y., BRAKE LINE, FT. STRUT	6A04000-023
	1	LINE-AEROQUIP (83")	2807-4
	2	FTG.-AEROQUIP	63-190600-4
2	2	TEE	AN824-4D
3	2	FTG., BULK.	AN832-4D
	2	WASHER	NAS1149D0863J
	2	NUT	AN924-4D
4	2	ASS'Y., BRAKE LINE (34")	6A04000-024
	2	LINE-ALUMINUM	.035 X ¼ X 34"
	4	SLEEVE	MS20819-4D
	4	NUT	AN818-4D
5	2	ASSY., BRAKE LINE (20.75")	6A04000-25
	2	LINE-ALUMINUM	.035 X ¼ X 20.75"
	4	SLEEVE	MS20819-4D
	4	NUT	AN818-4D
6	4	FTG., BULK.	AN832-4D
	4	WASHER	NAS1149D0863J
	4	NUT	AN924-4D
7	4	ASS'Y., BRAKE LINE	6A04000-026
	1	LINE-AEROQUIP (14")	2807-4
	2	FTG.-AEROQUIP	63-190600-4
8	2	ELBOW (45 DEG)	MS20823-4D
	2	ADAPTOR	6A04258-004
9	2	ASS'Y., BRAKE LINE (5.25")	6A04000-027
	2	LINE-ALUMINUM	.035 X ¼ X 5.25"
	4	SLEEVE	MS20819-4D
	4	NUT	AN818-4D
10	2	GROMMET	MS35489-9

THIS PAGE INTENTIONALLY LEFT BLANK

SECTION 13: MAIN GEAR SLIDE TUBE ASSEMBLY



MAIN GEAR SLIDE TUBE ASS'Y (O-RINGS INSTALLED)
FIGURE 17

WIPLINE MODEL 6000 / 6100 FLOAT PARTS MANUAL

ITEM	QTY	FIGURE 17: MAIN GEAR SLIDE TUBE ASS'Y (O-RINGS) PART DESCRIPTION	PART NO.
1	1	CYL., END CAP ASS'Y.	6A05268-001
2	1	CYL. OUTSIDE	6A05116-001
3	1	RAM ASS'Y.	6A05000-006
4	1	RING CYL. SUPPORT	6A05181-001
	1	"O" RING	MS28775-327
5	1	FLANGE CYL. END ASS'Y.	6A05199-001
6	8	BOLT	NAS6203-2
7	8	WASHER LOCK	MS35333-39
8	8	WASHER	NAS1149D0363J
9	2	"O" RING	MS28775-220
10	2	ELBOW	MS20822-4D
11	1	"O" RING	MS28775-219
12	1	SLIDE TUBE CAP	6A05196-001
13	2	BOLT	AN6-12A
14	A/R	WASHER	NAS1149D0663J
15	6	NUT	MS21044N6
16	2	BOLT	AN4-24A
17	A/R	WASHER	NAS1149D0463J
18	4	NUT	MS21044N4
19	A/R	SHIM	6A05156-026
20	2	LOCK PIN	6A05702-008
21	1	FTG., SLIDE TUBE	6A05208-001

WIPLINE MODEL 6000 / 6100 FLOAT PARTS MANUAL

ITEM	QTY	FIGURE 17: MAIN GEAR SLIDE TUBE ASS'Y (O-RINGS) PART DESCRIPTION	PART NO.
22	2	LOCK CATCH	6A05193-001
23	1	SLIDE TUBE	6A05402-003
	1	END, SLIDE TUBE, INSERT	6A05259-002
24	1	CARRIAGE COMPLETE WITH HOOKS	6A05309-001
	1	CARRIAGE WITH BUSHINGS ONLY	1002642
	2	BUSHING (LG.)	26DU16
	2	BUSHING (SM.)	08DU08
	1	GREASE ZERK	1095K41
25	1	BOLT	AN3-25A
26	A/R	WASHER	NAS1149D0363J
27	1	NUT	MS21044N3
28	1	BOLT	AN6-26A
29	A/R	WASHER	NAS1149D0663J
30	1	NUT	MS21044N6
31	2	SET SCREW	1032 NF X 3/16
32	2	MAGNET	3A05701-001
33	1	LOCK AFT	6A05042-001
34	1	LOCK FWD	6A05041-001
35	2	SET SCREW	6A05087-001
36	2	JAM NUT	AN316-4R
37	1	SPRING LOCK	6A05533-001
38	1	COVER CARRIAGE	6A05158-019
39	4	SCREW	AN526-832R8
	4	WASHER LOCK	MS35333-38
	4	WASHER	NAS1149DN832J

WIPLINE MODEL 6000 / 6100 FLOAT PARTS MANUAL

ITEM	QTY	FIGURE 17: MAIN GEAR SLIDE TUBE ASS'Y (O-RINGS) PART DESCRIPTION	PART NO.
40	2	BOLT	AN4-24A
41	1	BOLT	AN6-47A
42	1	FTG., FWD., SLIDE TUBE	6A01201-001
43	1	END, SLIDE TUBE	6A05259-002
44	4	BOLT	AN5-6A
	A/R	WASHER	NAS1149D0563J
	4	NUT	MS21044N5
45	2	BOLT	AN6-7A
	A/R	WASHER	NAS1149D0663J
	2	NUT	MS21044N6
46	2	BOLT	AN5H10A
	A/R	WASHER	NAS1149D0563J
47	1	BOLT	AN4-14A
	A/R	WASHER	NAS1149D0463J
	1	NUT	MS21044N4
48	1	"O" RING	MS28775-314
49	1	WIPER, MAIN, FELT	6A05580-004
50	1	WIPER, NYLON	8880410

WIPLINE MODEL 6000 / 6100 FLOAT PARTS MANUAL

FIGURE 18: MAIN GEAR SLIDE TUBE ASS'Y (T-SEALS)			
ITEM	QTY	PART DESCRIPTION	PART NO.
1	1	CYL., END CAP	1002236
2	1	CYL. OUTSIDE	1002022
3	1	RAM. ASS'Y.	1002639
4	1	RING CYL. SUPPORT	6A05181-001
	1	"O" RING	MS28775-327
5	1	FLANGE CYL. END	1002235
6	8	BOLT	NAS6203-2
7	8	WASHER LOCK	MS35333-39
8	8	WASHER	NAS1149D0363J
9	2	T-SEAL	1002229
10	2	ELBOW FTG.	MS20822-4D
11	1	T-SEAL	1002229
12	1	SLIDE TUBE CAP	6A05196-001
13	2	BOLT	AN6-12A
14	A/R	WASHER	NAS1149D0663J
15	6	NUT	MS21044N6
16	2	BOLT	AN4-24A
17	A/R	WASHER	NAS1149D0463J
18	4	NUT	MS21044N4
19	A/R	SHIM	6A05158-020
20	2	LOCK PIN	6A05702-008
21	1	FTG., SLIDE TUBE	6A05208-001

WIPLINE MODEL 6000 / 6100 FLOAT PARTS MANUAL

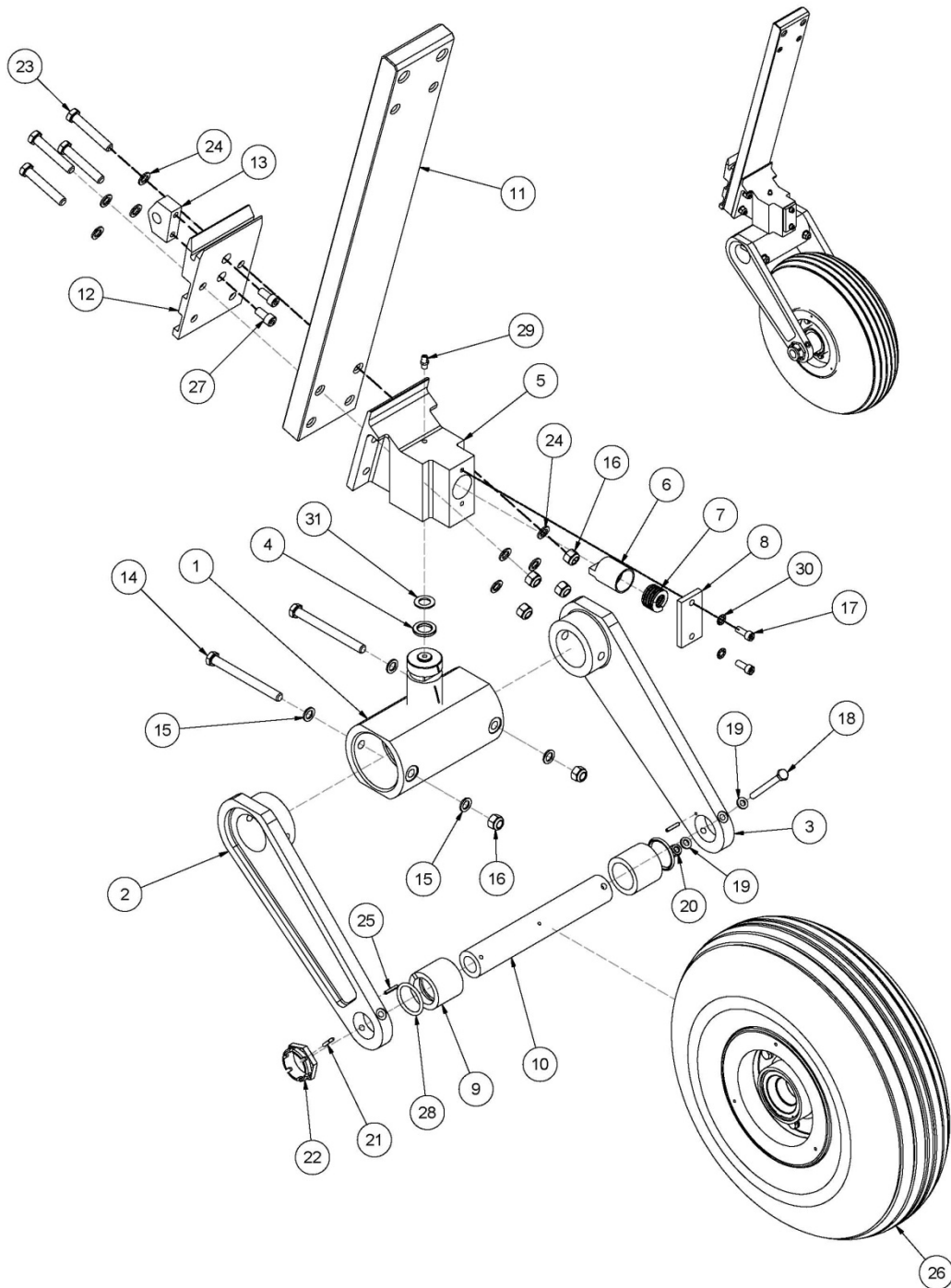
ITEM	QTY	FIGURE 18: MAIN GEAR SLIDE TUBE ASS'Y (T-SEALS) PART DESCRIPTION	PART NO.
22	2	LOCK CATCH	6A05193-001
23	1	SLIDE TUBE	6A05402-003
	1	END, SLIDE TUBE, INSERT	6A05259-002
24	1	CARRIAGE ASS'Y	1002643
	2	BUSHING (LG.)	26DU16
	2	BUSHING (SM.)	08DU08
	1	GREASE ZERK	1095K41
25	1	BOLT	AN3-25A
26	A/R	WASHER	NAS1149D0363J
27	1	NUT	MS21044N3
28	1	BOLT	AN6-26A
29	A/R	WASHER	NAS1149D0663J
30	1	NUT	MS21044N6
31	2	SET SCREW	1032 NF X 3/16
32	2	MAGNET	3A05701-001
33	1	LOCK, AFT	6A05042-001
34	1	LOCK, FWD	6A05041-001
35	2	SET SCREW	6A05087-001
36	2	JAM NUT	AN316-4R
37	1	SPRING LOCK	6A05533-001
38	1	COVER, CARRIAGE	6A05158-019
39	4	SCREW	AN526-832R8
	4	WASHER LOCK	MS35333-38
	4	WASHER	NAS1149DN832J

WIPLINE MODEL 6000 / 6100 FLOAT PARTS MANUAL

ITEM	QTY	FIGURE 18: MAIN GEAR SLIDE TUBE ASS'Y (T-SEALS) PART DESCRIPTION	PART NO.
40	2	BOLT	AN4-24A
41	1	BOLT	AN6-47A
42	1	FTG., FWD, SLIDE TUBE	6A01201-001
43	1	END, SLIDE TUBE	6A05259-002
44	4	BOLT	AN5-6A
	A/R	WASHER	NAS1149D0563J
	4	NUT	MS21044N5
45	2	BOLT	AN6-7A
	A/R	WASHER	NAS1149D0663J
	2	NUT	MS21044N6
46	2	BOLT	AN5H10A
	A/R	WASHER	NAS1149D0563J
47	1	BOLT	AN4-14A
	A/R	WASHER	NAS1149D0463J
	1	NUT	MS21044N4
48	2	T-SEAL	1002231
49	1	WIPER, MAIN, FELT	6A05580-004
50	1	WIPER, NYLON	8880410

THIS PAGE INTENTIONALLY LEFT BLANK

SECTION 14: NOSE GEAR ASSEMBLY



NOSE FORK AND PIVOT ASS'Y, LWR. END
FIGURE 19

(Newer style wheel recognized by the smooth, machined inner surface)
(Older style wheel recognized by the raised interior segments)

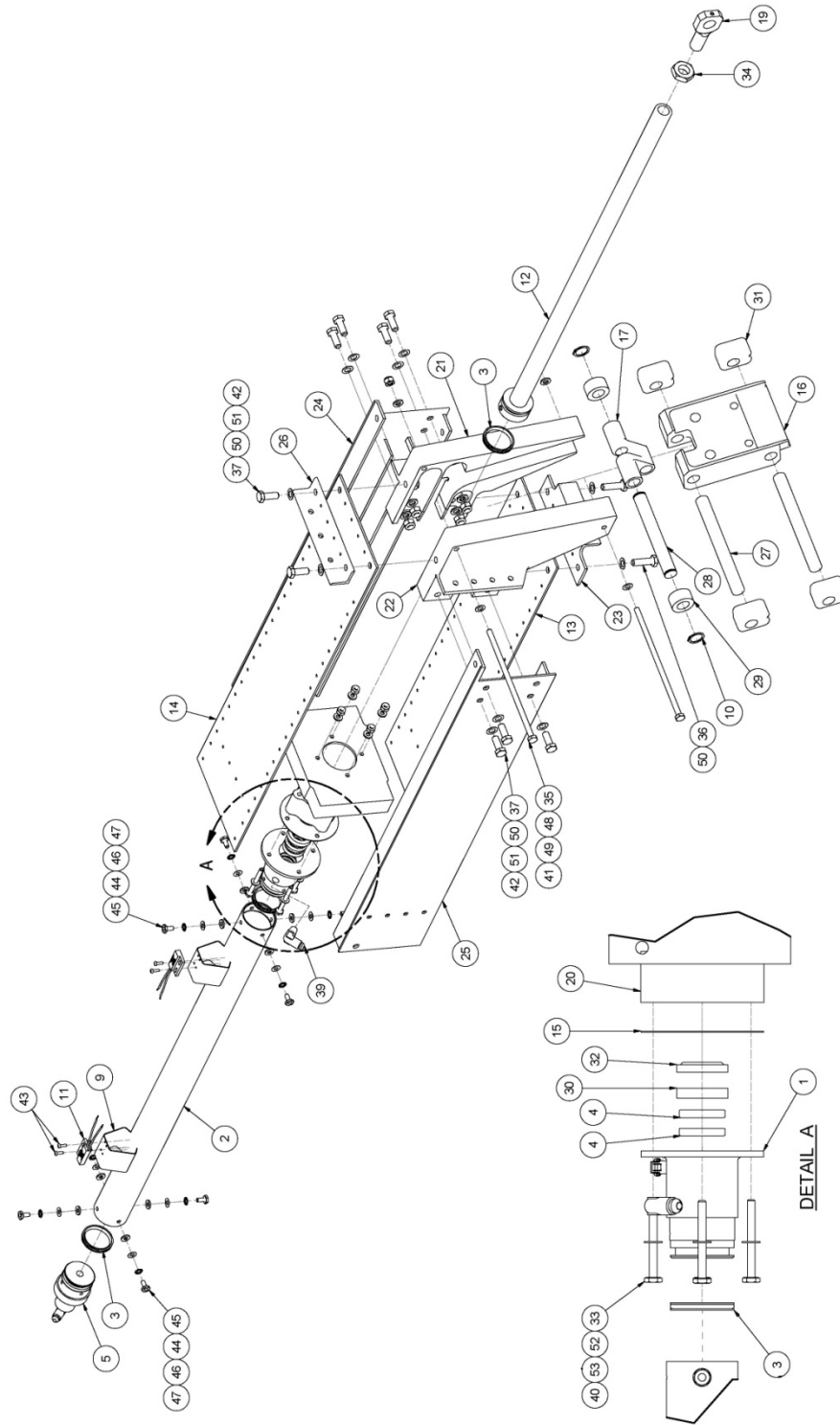
WIPLINE MODEL 6000 / 6100 FLOAT PARTS MANUAL

ITEM	QTY	FIGURE 19: NOSE FORK AND PIVOT ASS'Y-LWR. END PART DESCRIPTION	PART NO.
1	1	YOKE ASS'Y	6A06000-006
2	1	LEG, NOSE WHEEL FORK, LEFT	6A06199-003
3	1	LEG, NOSE WHEEL FORK, RIGHT	6A06199-004
4	1	THRUST WASHER	3A06602-001
5	1	PIVOT BLOCK, NOSE GEAR	6A06312-001
6	1	RETAINER, NOSE GEAR PIVOT	6A06512-002
7	1	SPRING	3A06525-002
8	1	CAP, PIVOT BLOCK	3A06037-001
9	2	SPACER	6A06268-002
10	1	AXLE, NOSE WHEEL	6A06265-001
11	1	SPRING, NOSE GEAR	6A06625-001
12	1	PLATE, BEARING, LWR., NOSE SPRING	6A06196-002
13	1	BLOCK ATTACH, TOWING	6A06202-001
14	2	BOLT	AN6-37A
15	4	WASHER	NAS1149D0663J
16	6	NUT	MS21044N6
17	2	SOCKET HEAD CAP SCREW	MS16997-60
18	1	BOLT	AN4-25A
19	2	WASHER	NAS1149F0463P
20	1	NUT	MS21044N4
21	1	COTTER PIN	MS24665-349
22	1	NUT, AXLE	MS21025-20

WIPLINE MODEL 6000 / 6100 FLOAT PARTS MANUAL

FIGURE 19: NOSE FORK AND PIVOT ASS'Y-LWR. END			
ITEM	QTY	PART DESCRIPTION	PART NO.
23	4	BOLT	AN6-21A
24	8	WASHER	NAS1149F0663P
25	2	PIN, ROLL, 1/8 X 3/4, SPRING	215-125-0750
26	1	NOSE WHEEL ASS'Y	6A06000-005
27	2	SOCKET HEAD CAP SCREW	MS16997-77
28	2	"O" RING	MS28775-218
29	2	GREASE ZERK	1095K41
30	2	STAR WASHER	MS35333-40
31	1	WASHER	NAS1149F0863P

THIS PAGE INTENTIONALLY LEFT BLANK



NOSE GEAR RETRACTION ASS'Y, UPR. END (T-SEALS INSTALLED)
FIGURE 20

WIPLINE MODEL 6000 / 6100 FLOAT PARTS MANUAL

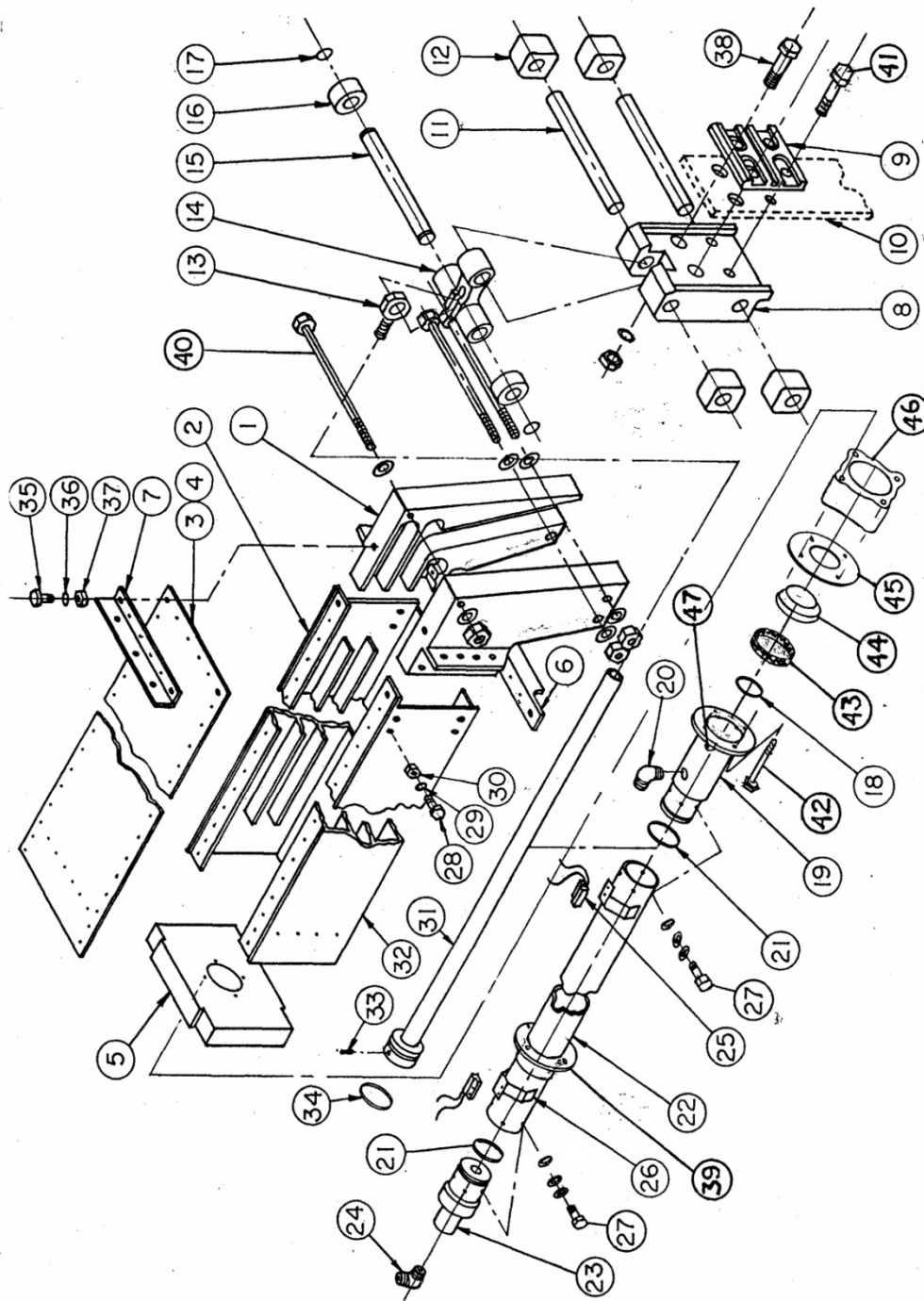
ITEM	QTY	FIGURE 20: NOSE GEAR RETRACTION ASS'Y, UPR END (T-SEALS) PART DESCRIPTION	PART NO.
1	1	FLANGE - CYLINDER NOSE GEAR RAM	1002013
2	1	CYLINDER, RAM, NOSE, 6000/8000	1002024
3	3	PISTON, T-SEAL	1002229
4	2	ROD, T-SEAL	1002230
5	1	ASSEMBLY, CYLINDER END CAP	1002236
6	1	OILER	1205K12
7	1	PLUG - RAM NOSE GEAR	13A07279-001
8	1	MAGNET, HOOK LATCH, MAIN GEAR	3A05701-001
9	2	CLIP, SWITCH, NOSE & MAIN	3A07005-178
10	2	SNAP RING	5100-62H
11	2	SWITCH, SENSOR	5801
12	1	ASSEMBLY, RAM, NOSE GEAR	6A07000-008
13	1	SKIN- NOSE BOX, BOTTOM, 6100 FLOATS	6A07156-022
14	1	SKIN- NOSE BOX, BOTTOM, 6100 FLOATS	6A07156-023
15	1	PLATE - FLANGE	6A07158-129
16	1	TROLLY, NOSE GEAR	6A07199-002
17	1	LINK, NOSE GEAR	6A07204-001
18	1	CAP - END, NOSE BOX	6A07210-001
19	1	ROD END - NOSE GEAR RAM	6A07263-001

WIPLINE MODEL 6000 / 6100 FLOAT PARTS MANUAL

ITEM	QTY	FIGURE 20: NOSE GEAR RETRACTION ASS'Y, UPR END (T-SEALS) PART DESCRIPTION	PART NO.
20	1	SPACER - FLANGE CYLINDER NOSE GEAR RAM	6A07264-003
21	1	TRACK, END, NOSE GEAR, LH	6A07337-001
22	1	TRACK, END, NOSE GEAR, RH	6A07337-002
23	1	ANGLE, NOSE BOX, BOTTOM	6A07357-036
24	1	SIDE, TRACK, NOSE GEAR, LH	6A07364-001
25	1	SIDE, TRACK, NOSE GEAR, RH	6A07364-002
26	1	ANGLE, NOSE BOX, TOP	6A07427-003
27	2	AXLE - TROLLEY, NOSE GEAR	6A07534-001
28	1	AXLE - LINK, NOSE GEAR	6A07534-002
29	2	ROLLER - TRACK, NOSE GEAR	6A07544-001
30	1	WIPER, NOSE GEAR ACTR, 10000, 13	6A07580-005
31	4	BLOCK, SLIDE, TROLLEY, NOSE GEAR	6A07603-001
32	1	WIPER	8880500U
33	4	BOLT	AN3-17A
34	1	NUT	AN316-10R
35	2	BOLT	AN4-65A
36	2	BOLT	AN5-10A
37	10	BOLT	AN5-6A
38	1	O-RING	AN6227-9

WIPLINE MODEL 6000 / 6100 FLOAT PARTS MANUAL

ITEM	QTY	FIGURE 20: NOSE GEAR RETRACTION ASS'Y, UPR END (T-SEALS) PART DESCRIPTION	PART NO.
39	1	ELBOW	MS20822-4D
40	4	NUT	MS21044N3
41	2	NUT	MS21044N4
42	10	NUT	MS21044N5
43	4	SCREW, MACHINE, PAN HEAD	MS35206-215
44	8	STAR WASHER	MS35333-39
45	8	BOLT	NAS1103-2
46	8	WASHER	NAS1149D0316J
47	8	WASHER	NAS1149D0363J
48	2	WASHER	NAS1149D0416J
49	2	WASHER	NAS1149D0463J
50	12	WASHER	NAS1149D0516J
51	10	WASHER	NAS1149D0563J
52	4	WASHER	NAS1149F0332P
53	4	WASHER	NAS1149F0363P



NOSE GEAR RETRACTION ASS'Y, UPR. END (O-RINGS INSTALLED)

FIGURE 21

WIPLINE MODEL 6000 / 6100 FLOAT PARTS MANUAL

ITEM	QTY	FIGURE 21: NOSE GEAR RETRACTION ASS'Y-UPR. END (O-RINGS) PART DESCRIPTION	PART NO.
		NOSE GEAR, RETRACTION SYSTEM	6A07000-004
1	1	END, NOSE GEAR TRACK, LT.	6A07337-001
	1	END, NOSE GEAR TRACK, RT.	6A07337-002
2	1	TRACK, SIDE NOSE GEAR BOX, LT.	6A07364-001
	1	TRACK, SIDE NOSE GEAR BOX, RT.	6A07364-002
3	1	NOSE BOX, COVER, TOP	6A07156-023
4	1	NOSE BOX, COVER, BTM.	6A07156-022
5	1	END CAP, NOSE BOX	6A07210-001
6	1	ANGLE, NOSE BOX, BTM.	6A07357-036
7	1	ANGLE, NOSE BOX, TOP	6A07427-003
8	1	TROLLEY, NOSE GEAR	6A07199-002
9	1	PLATE, BEARING	6A07184-001
10	1	SPRING, NOSE	6A06625-001
11	2	AXLE, TROLLEY	6A07534-001
12	4	BLOCK, TROLLEY	6A07603-001
13	1	ROD END, NOSE GEAR RAM	6A07263-001
14	1	LINK, TROLLEY, NOSE GEAR	6A07204-001
15	1	AXLE, LINK	6A07534-002
16	2	ROLLER, TROLLEY BEARING	6A07544-001
17	2	SNAP RING	5100-62H
18	1	"O" RING (3/16")	MS28775-316
19	1	FLANGE, NOSE GEAR CYL.	6A07264-002
20	1	ELBOW	MS20822-4D

WIPLINE MODEL 6000 / 6100 FLOAT PARTS MANUAL

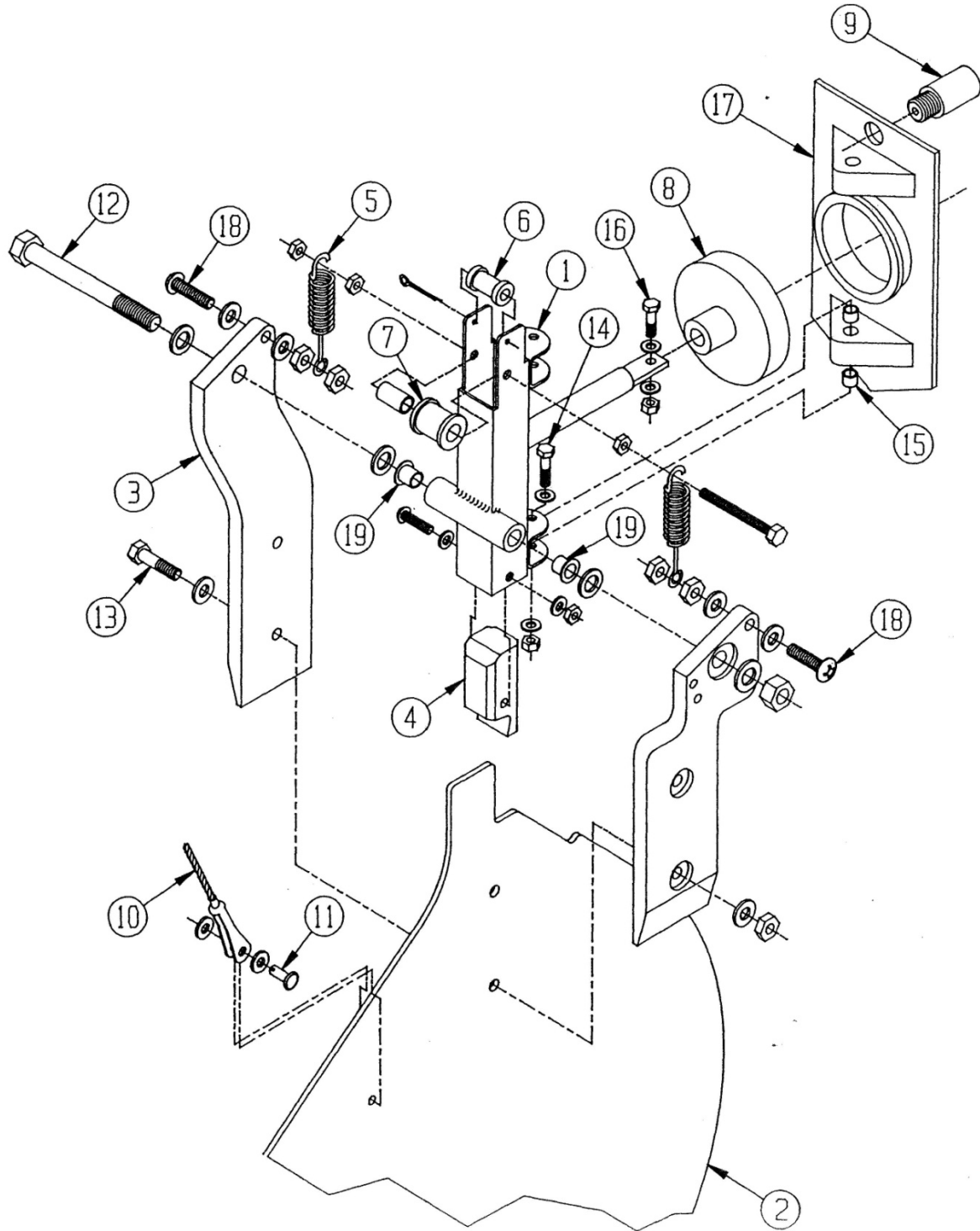
FIGURE 21: NOSE GEAR RETRACTION ASS'Y-UPR. END (O-RINGS)			
ITEM	QTY	PART DESCRIPTION	PART NO.
21	1	"O" RING	MS28775-220
22	1	CYL., NOSE GEAR RAM (OLD STYLE)	6A07116-002
23	1	END CAP	6A05268-001
24	1	ELBOW	MS20822-4D
25	2	SWITCH, PROXIMITY	5801
	4	SCREWS	MS35206-215
26	2	MOUNT SWITCH	3A07005-178
27	8	BOLT	NAS6203-2
	8	WASHER THICK	NAS1149D0363J
	8	WASHER THIN	NAS1149D0316J
	8	WASHER LOCK	MS35333-39
28	10	BOLT	AN5-7A
29	A/R	WASHER	NAS1149D0563J
	A/R	WASHER	NAS1149D0563JL
30	8	NUT	MS21044N5
31	1	ASS'Y RAM	6A07000-008
32	1	TRACK, SIDE NOSE GEAR BOX, LT.	6A07364-001
	1	TRACK, SIDE NOSE GEAR BOX, RT.	6A07364-002
33	1	MAGNET	3A05701-001
34	1	"O" RING	MS28775-219
35	2	BOLT	AN5-10A
36	A/R	WASHER	NAS1149D0563J
	A/R	WASHER	NAS1149D0563JL
37	2	NUT	MS21044N5
38	2	BOLT	AN8-26A
	A/R	WASHER	NAS1149F0763P

WIPLINE MODEL 6000 / 6100 FLOAT PARTS MANUAL

ITEM	QTY	FIGURE 21: NOSE GEAR RETRACTION ASS'Y-UPR. END (O-RINGS) PART DESCRIPTION	PART NO.
38(cont.)	2	NUT	MS21044N8
39	1	SUPPORT RING, CYL.	6A05181-001
40	2	BOLT	AN4-65A
	A/R	WASHER	NAS1149F0463P
	2	NUT	MS21044N4
41	2	BOLT	AN6-24A
	A/R	WASHER	NAS1149F0663P
	2	NUT	MS21044N6
42	4	BOLT	AN3-20A
	4	WASHER	NAS1149F0363P
	4	NUT	MS21044N3
43	1	WIPER, FELT	6A07580-001
44	1	WIPER, NYLON	8880510
45	1	PLATE	6A07158-129
46	1	SPACER	6A07264-003
47	1	OILER, FILLER	1205K12

THIS PAGE INTENTIONALLY LEFT BLANK

SECTION 15: WATER RUDDER INSTALLATION



WATER RUDDER BLADE INSTALLATION
FIGURE 22

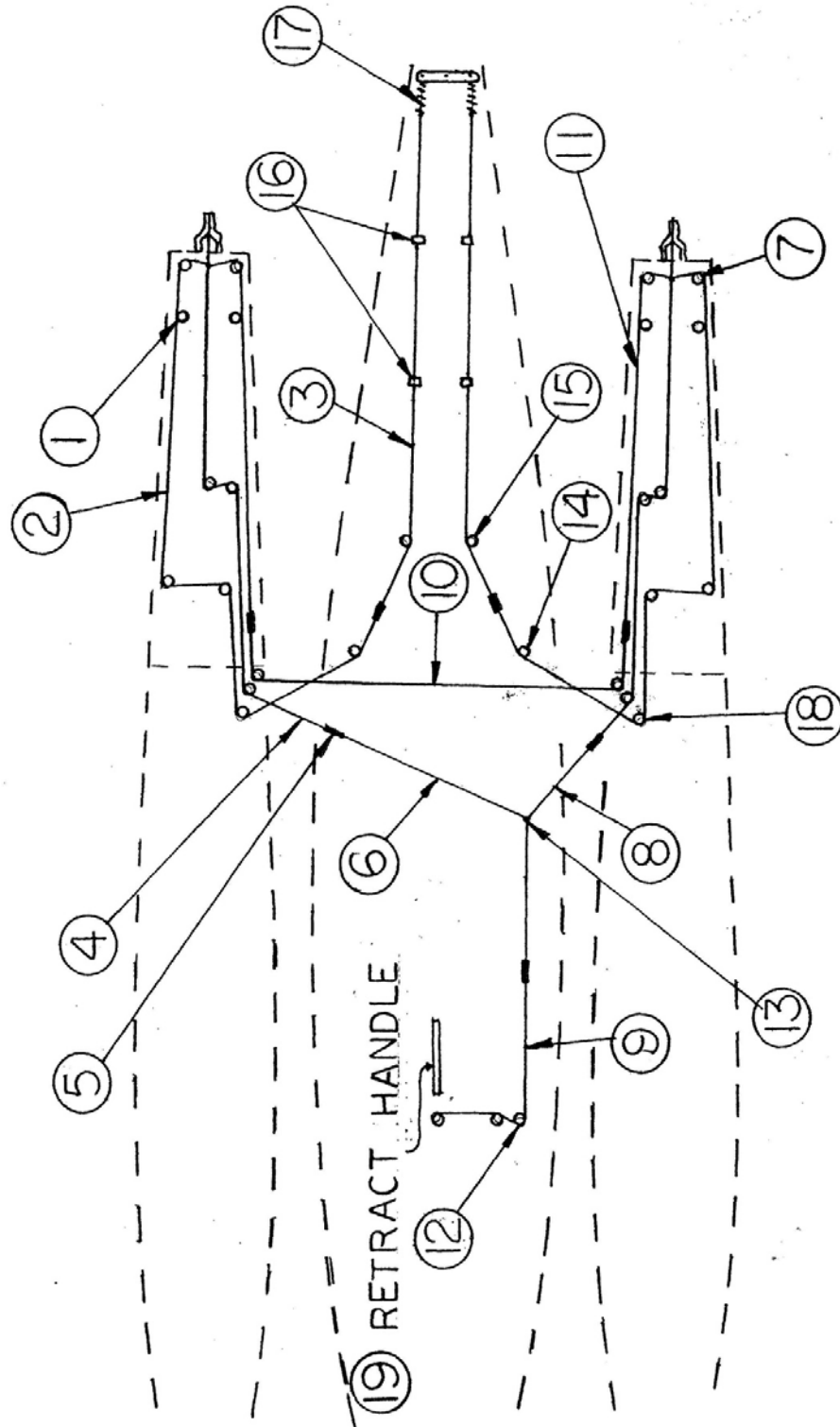
WIPLINE MODEL 6000 / 6100 FLOAT PARTS MANUAL

FIGURE 22: WATER RUDDER BLADE			
ITEM	QTY	PART DESCRIPTION	PART NO.
1	1	ASSY., WATER RUDDER POST	8A08000-098
2	1	BLADE, WATER RUDDER	6A08001-005
3	1	ARM, WATER RUDDER, LT.	4A08197-009
	1	ARM, WATER RUDDER, RT.	4A08197-008
4	1	STOP, WATER RUDDER	6A08183-005
	1	BOLT	AN3-13A
	1	WASHER	NAS1149F0363P
	1	NUT	MS21044N3
5	2	SPRING, RETRACT	3A08525-001
6	1	ROLLER, RETRACT CABLE, TOP	6A08601-002
	1	COTTER PIN	MS24665-306
7	1	ROLLER, RETRACT CABLE, LWR.	3A08606-001
	1	BUSHING	3A08502-001
	1	BOLT	1032 X 2 INCH SS
	3	NUT	NAS697A3W
8	1	BOOT, WATER RUDDER	3A08650-001
9	1	GUIDE, WATER RUDDER CABLE	3A08605-001
10	1	ASS'Y CABLE-RETRACT	6A08000-013
11	1	CLEVIS PIN	MS20392-2C11
	1	WASHER	NAS1149D0363J
	1	COTTER PIN	MS24665-0151
12	1	BOLT, WATER RUDDER HINGE	AN6C34A
	2	WASHER	NAS1149D0663JL
	2	WASHER	NAS1149D0663J
	1	NUT	MS21045-6
13	2	BOLT, RUDDER TO ARM, ATTACH	AN4-10A
	4	WASHER	NAS1149D0463J
	2	NUT	NAS6749A4W
14	2	BOLT, RUDDER POST HINGE	AN3C10A
	2	WASHER	NAS1149D0363J

WIPLINE MODEL 6000 / 6100 FLOAT PARTS MANUAL

FIGURE 22: WATER RUDDER BLADE			
ITEM	QTY	PART DESCRIPTION	PART NO.
14 (cont.)	2	NUT	NAS697A3W
15	4	BEARING (TEFLON-STEEL) SPECIFY	03DU04
	4	BEARING NYLINER (PLASIC) SPECIFY (OLD STYLE)	4L4F
16	1	BOLT	AN3-6A
	1	WASHER	NAS1149D0363J
	1	NUT	MS21044N3
17	1	CASTING, WATER RUDDER	3A01437-001
18	2	SCREW, SPRING ATTACH	AN526-428R16
	A/R	WASHER	NAS1149F0463P
	2	NUT	H10-4
19	2	BEARING-NYLINER (PLASTIC) SPECIFY (OLD STYLE)	6L11F
	2	BEARING (TEFLON-STEEL) SPECIFY	06DU08

THIS PAGE INTENTIONALLY LEFT BLANK



WATER RUDDER AND RETRACT SCHEMATIC
FIGURE 23

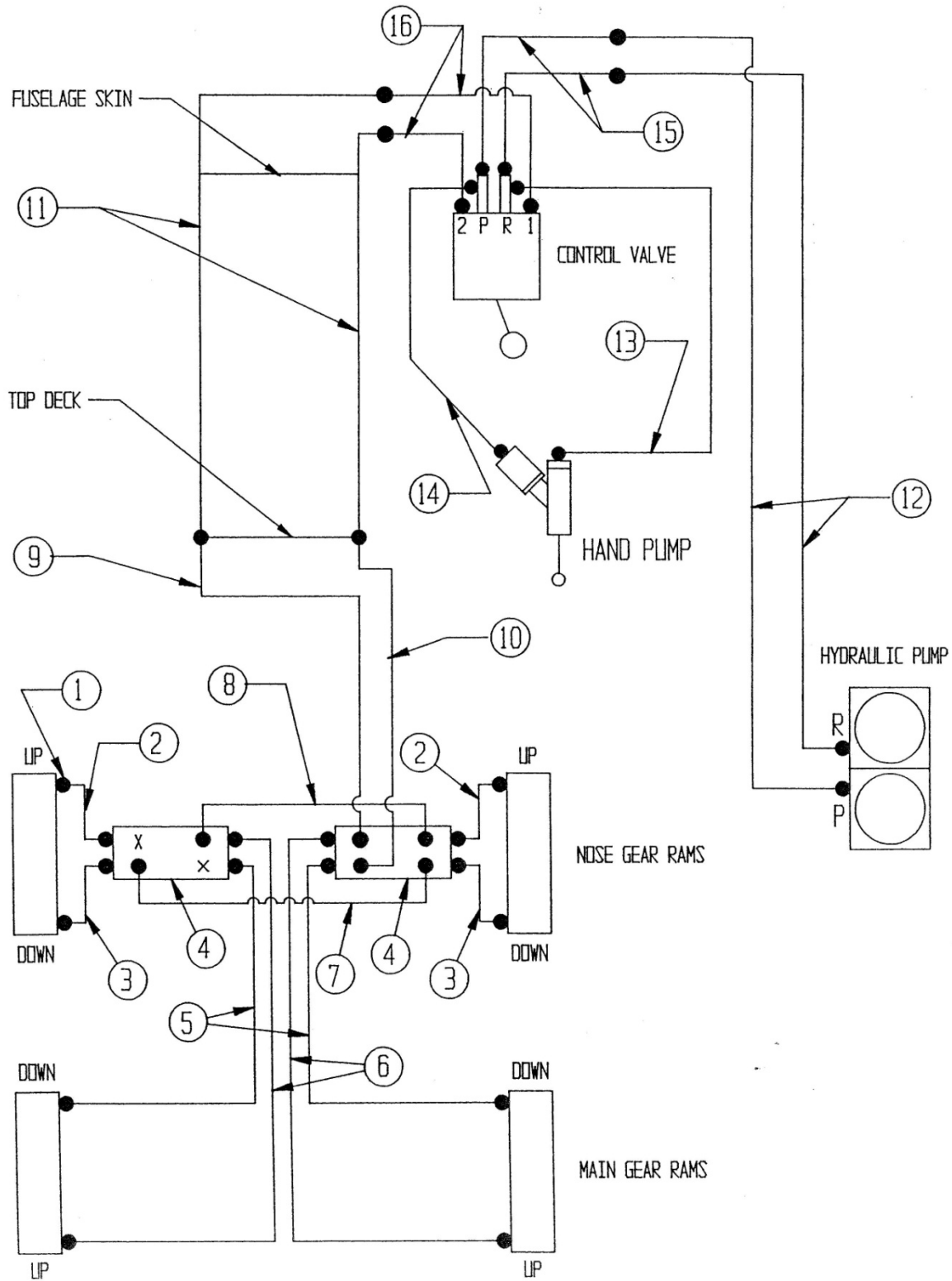
WIPLINE MODEL 6000 / 6100 FLOAT PARTS MANUAL

FIGURE 23: WATER RUDDER AND RETRACT SCHEMATIC			
ITEM	QTY	PART DESCRIPTION	PART NO.
1	32	PULLEY	MS20219-2
2	2	ASS'Y. CABLE, STEERING (192")	6A08000-012
3	2	ASS'Y. CABLE, RETRACT (168.5")	6A08000-014
4	2	ASS'Y. CABLE, RETRACT (161")	6A08000-013
5	7	TURNBUCKLE, BARREL	MS21251B3S
6	1	ASS'Y., CABLE RETRACT, FUS. (64.25")	6A08000-010
7	2	ASS'Y., CABLE AND PULLEY BRKT.	6A08000-019
8	1	ASS'Y., CABLE RETRACT, FUS. (27.75")	6A08000-009
9	1	ASS'Y CABLE RETRACT HANDLE (69")	6A08000-015
10	1	ASS'Y. CABLE, BALANCE SPR. BAR (132")	6A08000-008
11	2	ASS'Y. CABLE, BALANCE (104")	6A08000-011
12	1	PULLEY BRKT., RETRACT CABLE	6A08153-003
13	1	PULLEY BRKT. EXTENSION, FUS.	6A08153-004
	1	BRKT., LWR.	6A08005-089
	1	BRKT., UPR.	6A08005-090
14	2	PULLEY BRKT., FUS.	6A08005-091
	2	PIVOT, PULLEY CABLE	6A08193-002
15	2	ASS'Y., PULLEY BRKT., BELLY	6A08000-021
16	4	CLIP, CABLE GUIDE	6A08153-005
	4	PLASTIC GUIDE	6A08601-003
17	2	SPRING	0742016-1
18		ASS'Y. PULLEY BRKT., GUNWALL, RT.	6A08000-016
	1	BRACKET PULLEY FT.	6A08355-002
	1	BRACKET PULLEY CENTER	6A08365-002
	1	BRACKET PULLEY RR.	6A08336-002
	1	BAR, MOUNTING	6A08209-002

WIPLINE MODEL 6000 / 6100 FLOAT PARTS MANUAL

ITEM	QTY	FIGURE 23: WATER RUDDER AND RETRACT SCHEMATIC PART DESCRIPTION	PART NO.
18(cont.)	6	PULLEY	MS20219-2
		ASSY., PULLEY BRACKET, GUNWALL LT.	6A08000-017
	1	BRACKET PULLEY FT.	6A08355-001
	1	BRACKET PULLEY CENTER	6A08365-001
	1	BRACKET PULLEY RR.	6A08336-001
	1	BAR, MOUNTING	6A08209-002
	6	PULLEY	MS20219-2
19	1	ASS'Y., RETRACT HANDLE, (SEAPLANE)	6S08000-020
	1	ASS'Y., RETRACT HANDLE & CONSOLE (AMPHIB.)	6A11000-015

SECTION 16: HYDRAULIC SYSTEM

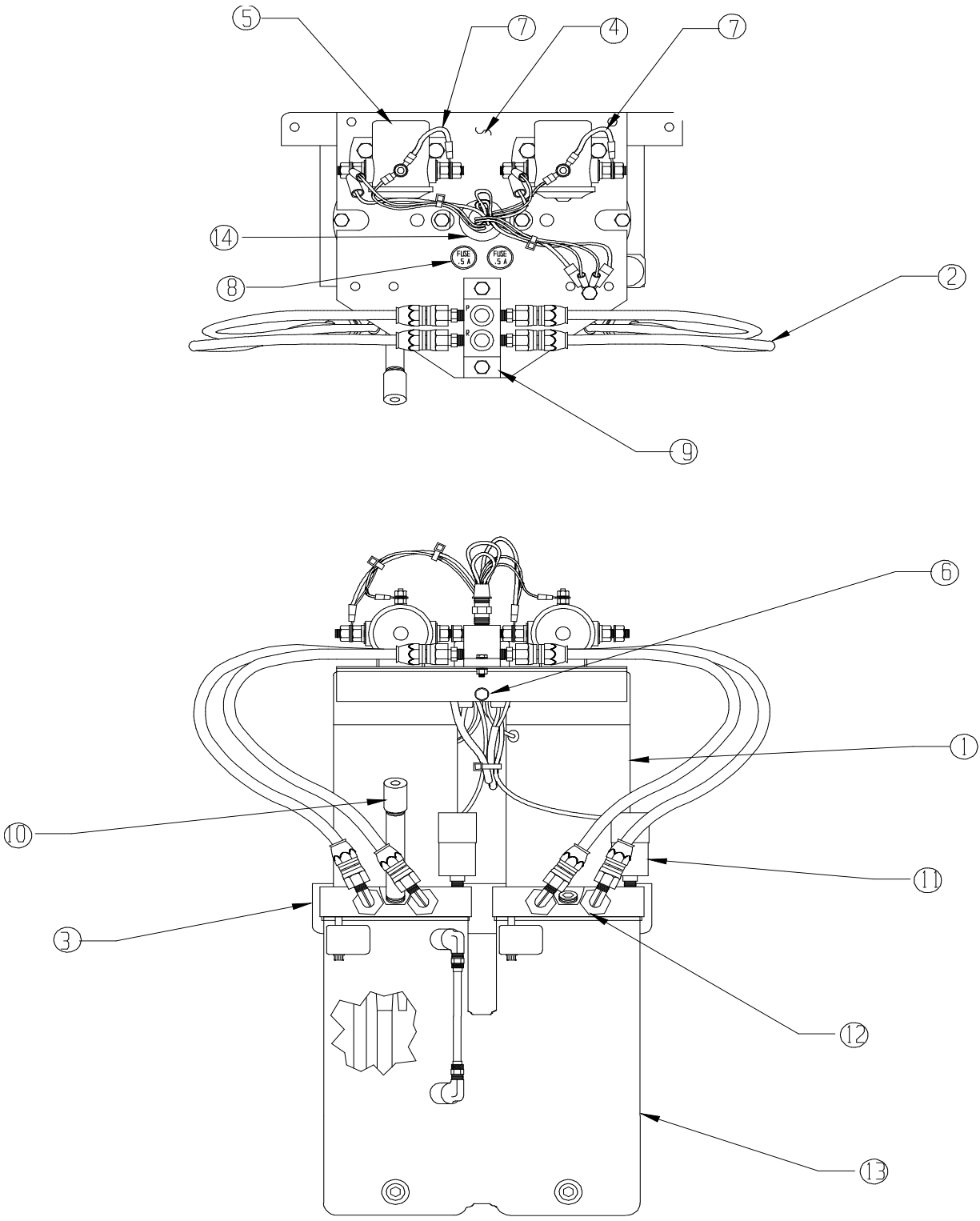


HYDRAULIC SYSTEM SCHEMATIC – AMPHIBIAN
FIGURE 24

WIPLINE MODEL 6000 / 6100 FLOAT PARTS MANUAL

ITEM	QTY	FIGURE 24: HYD. SYSTEM SCHEMATIC – AMPHIB. PART DESCRIPTION	PART NO.
1	8	ELBOW	MS20822-4D
2	2	LINE ASS'Y (76") MAN. TO N. GEAR UP	6A09000-064
3	2	LINE ASS'Y (54") MAN. TO N. GEAR DN.	6A09000-065
4	2	ASS'Y MANIFOLD	6A09000-028
5	2	LINE ASS'Y., (82") MAN. TO M. GEAR DN.	6A09000-066
6	2	LINE ASS'Y., (115") MAN. TO M. GEAR UP	6A09000-067
7	2	LINE ASS'Y., SPR. BAR (126")	6A09000-058
8	1	LINE ASS'Y., SPR. BAR (125")	6A09000-069
9	4	LINE ASS'Y., MAN. TO FLT. DECK (13.5")	6A09000-054
10	1	LINE ASS'Y., MAN. TO FLT. DECK (15")	6A09000-068
11	2	LINE ASS'Y., TOP DECK TO FUSE. (96")	6A09000-070
12	2	LINE ASS'Y., HYD. PUMP TO SELECTOR. (216")	6A09000-097
13	1	LINE ASS'Y., HAND PUMP TO SELECTOR (6")	6A09000-099
14	1	LINE ASS'Y., HAND PUMP TO SELECTOR (6.63")	6A09000-098
15	2	LINE ASS'Y., SELECTOR TO FUSE. (36")	6A09000-100
16	2	LINE ASS'Y., SELECTOR TO FUSE. (36")	6A09000-101
17	A/R	FITTINGS END (NOT SHOWN)	
		¼ STRAIGHT FITTING	63-190-600-4
		5/16 STRAIGHT FITTING	63-190-600-5
		¼ 45Ø FITTING	63-190-773-4
		5/16 45Ø FITTING	63-190-773-5
		¼ 90Ø FITTING	63-190-772-4
		5/16 90Ø FITTING	63-190-772-5

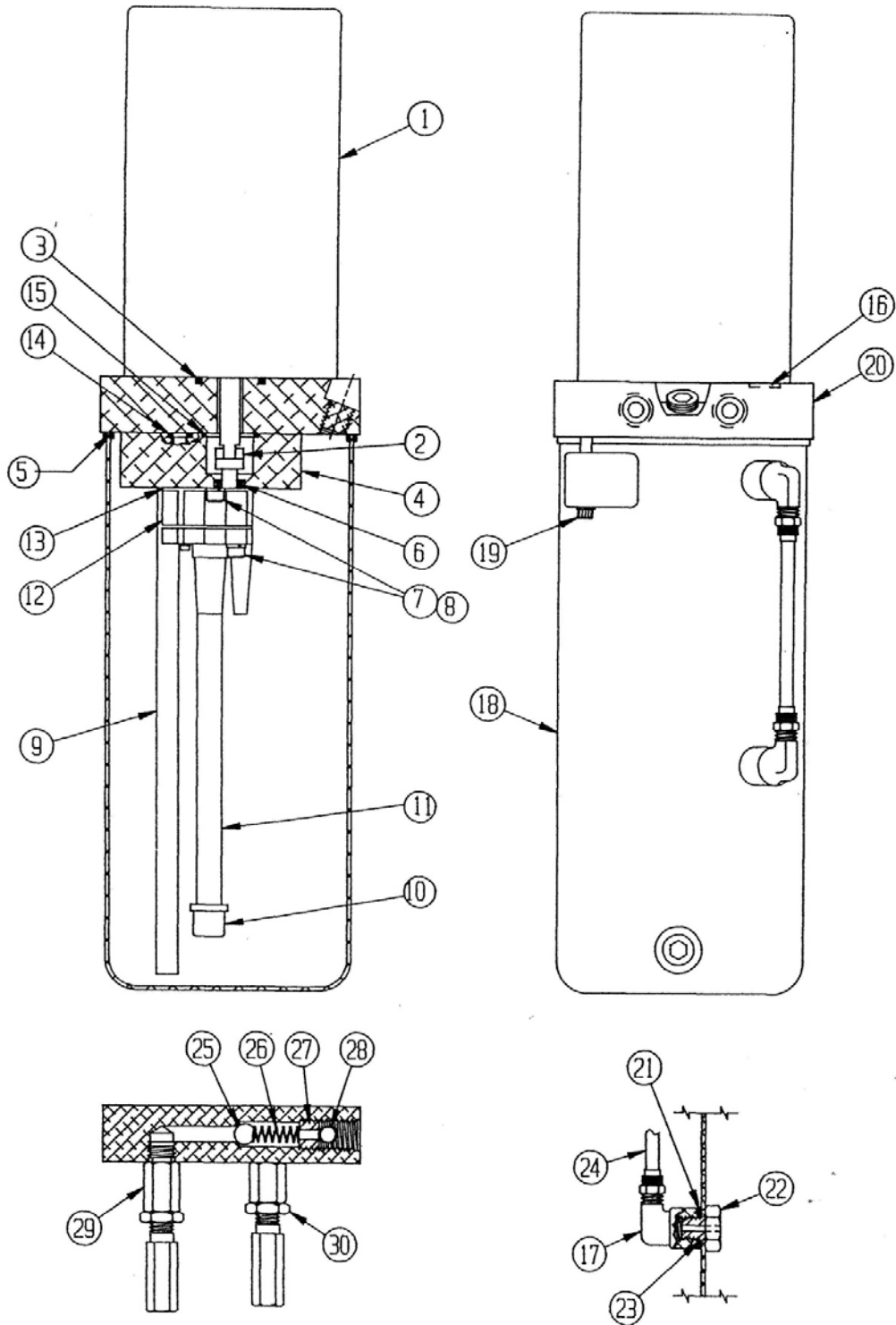
WIPLINE MODEL 6000 / 6100 FLOAT PARTS MANUAL



ASS'Y. HYD. PUMP
FIGURE 25

WIPLINE MODEL 6000 / 6100 FLOAT PARTS MANUAL

ITEM	QTY	FIGURE 25: ASS'Y HYD. PUMP PART DESCRIPTION	PART NO.
1		ASS'Y., HYD. PUMP (24 V)	6A09000-029
2	4	ASS'Y., HOSE	8A09000-048
	4	HOSE, (AEROQUIP) (12")	2807-4
	8	FTG. (AEROQUIP)	63-190600-4
3	1	ANGLE, PUMP MOUNT	6A09348-003
	4	CAP SCREW	MS16997-96
	4	LOCK WASHER	3/8 I.D.
4	1	ASS'Y., BRKT., PUMP MOUNT	6A09000-030
5	2	CONTACTOR STARTER	S1580A1 (8781-9)
	2	BOLT	AN4-5A
	4	WASHER	NAS1149D0463J
	2	NUT	MS21044N4
6	1	BOLT	AN3-36A
	1	WASHER	NAS1149F0363P
7	2	ASS'Y., SOLENOID DIODE	3A10000-002
8	2	FUSE HOLDER	
	2	FUSE	½ AMP
9	1	ASS'Y., MANIFOLD	6A09000-027
10	1	TUBE, BREATHER, FILLER	6A09398-001
	1	FILTER, BREATHER	6A09706-001
11	2	SWITCH, PRESSURE	GPP1250-23
12	4	ELBOW	AN833-4D
	4	NUT	AN924-4D
	4	"O" RING (MS28775-012)	AN6227-7
13		ASS'Y RESERVOIR	6A09000-115
	1	ASS'Y, SIGHT GAUGE	1005344
	1	SPACER, HYDRAULIC PUMP	6A09183-003
	1	PLACARD, OPERATING OIL LEVEL	6A3-2199
	2	RESERVOIR	704528
14	1	GROMMET	MS35489-17



ASS'Y. HYD. PUMP
FIGURE 26A

WIPLINE MODEL 6000 / 6100 FLOAT PARTS MANUAL

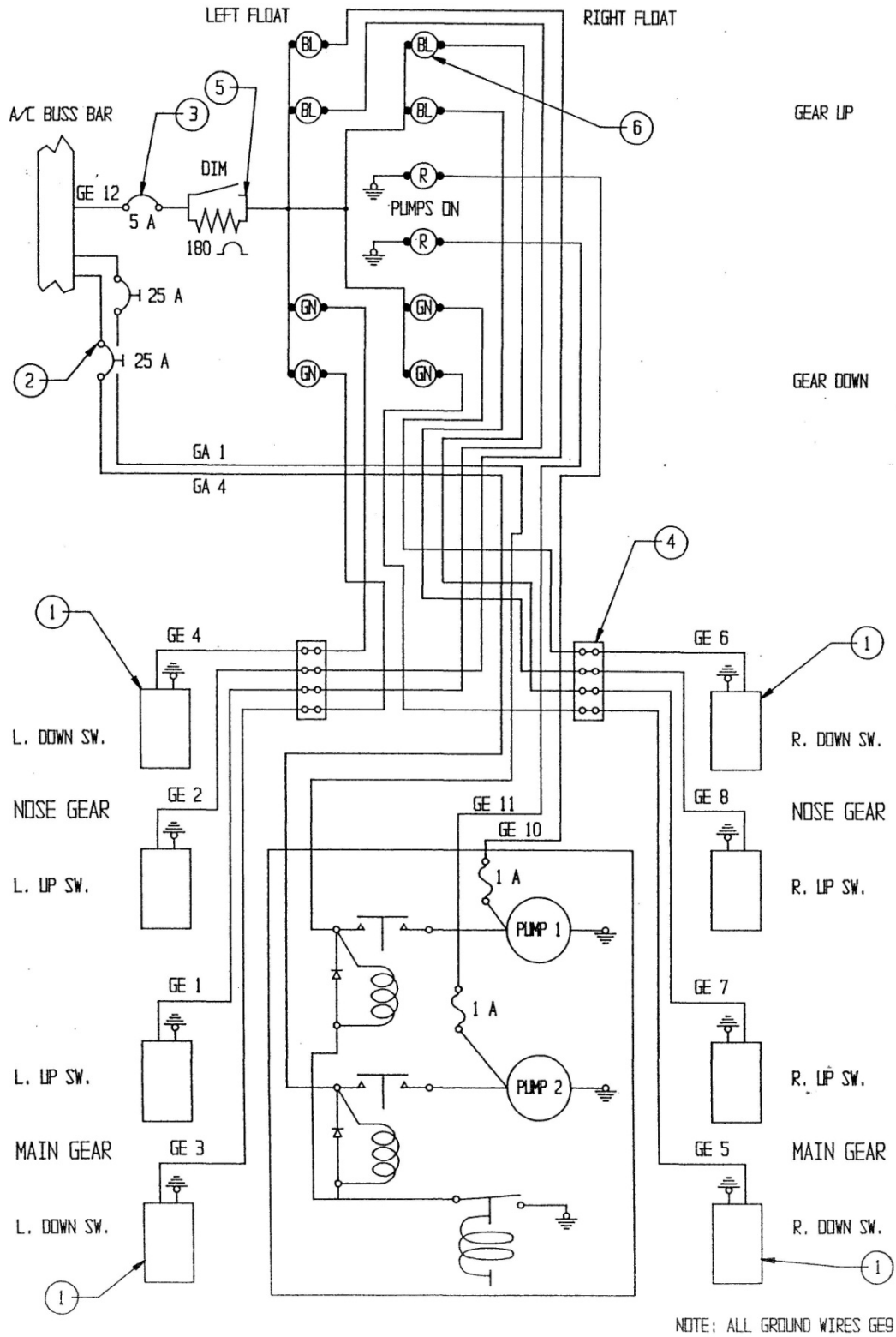
ITEM	QTY	FIGURE 26A: ASS'Y HYD. PUMP PART DESCRIPTION	PART NO.
		ASSY., MOTOR AND PUMP (24 V)	6A09000-029
1	1	MOTOR (24 V)	MB56-N1
2	1	COUPLING	361730
3	1	"O" RING	409406
4	1	SPACER	361726
5	1	RESERVOIR SEAL	410958
6	1	OIL SEAL	410512
7	4	LOCK WASHER	410410
8	4	RESERVOIR BOLTS	406187
9	1	PIPE NIPPLE	409894
10	1	FILTER	410521
11	1	TUBE, EXTENSION	361843
12	1	PUMP ASS'Y W/ MOTOR	636603A
13	2	"O" RING	405387
14	2	"O" RING	401273
15	1	"O" RING (OLD P/N 404070)	MS28775-020
16	2	PILOT WASHER	361615
17	1	ELBOW	41330
18	1	ASS'Y, RESERVOIR	6A09000-115
19	2	RESERVOIR BOLTS	406187
	2	WASHER	409357
20	1	ADAPTOR, PUMP BLOCK	361473

WIPLINE MODEL 6000 / 6100 FLOAT PARTS MANUAL

ITEM	QTY	FIGURE 26A: ASS'Y HYD. PUMP PART DESCRIPTION	PART NO.
21	1	"O" RING	361049
22	2	SCREW, SIGHT GAUGE	360824
23	2	"O"RING	402266
24	1	TUBE, SIGHT GAUGE	361507
25	1	STEEL BALL	490405
26	1	SPRING	410462
27	1	LOCK SCREW	409211
28	1	PIPE PLUG	409263
29	1	ASS'Y., VALVE, PRESSURE RELIEF	704520
30	1	ASS'Y., VALVE, THERMAL RELIEF	704522

SECTION 17: ELECTRICAL SCHEMATIC

WIPLINE MODEL 6000 / 6100 FLOAT PARTS MANUAL



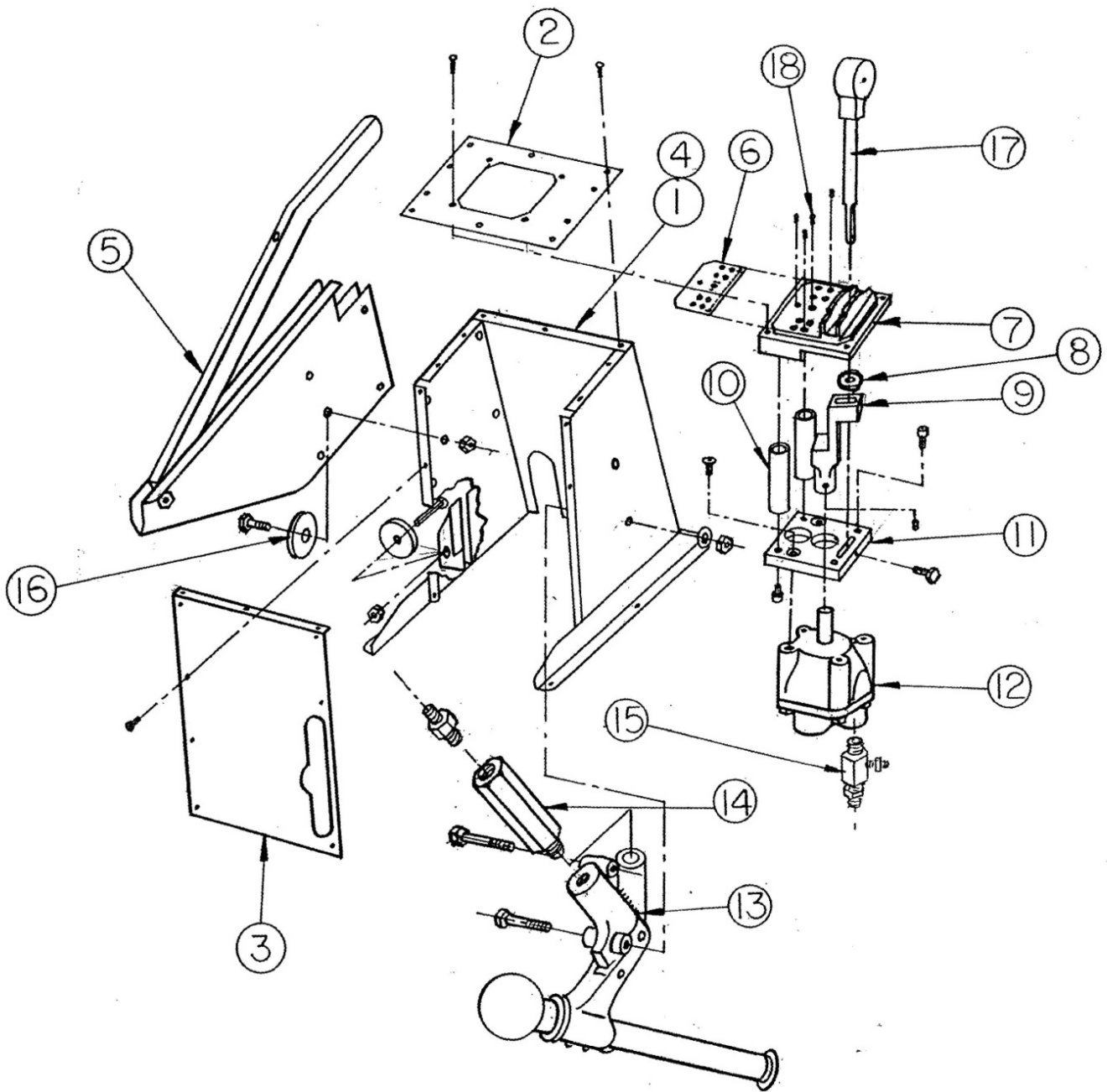
ELECTRICAL SCHEMATIC – AMPHIB.
FIGURE 26

WIPLINE MODEL 6000 / 6100 FLOAT PARTS MANUAL

ITEM	QTY	FIGURE 26: ELECTRICAL SCHEMATIC – AMPHIB. PART DESCRIPTION	PART NO.
1	8	PROXIMITY SWITCH	5801
2	2	CIRCUIT BREAKER (25 AMP.)	109-240-101
3	1	CIRCUIT BREAKER (5 AMP.)	435-205-105
4	2	PLUG (4 POSITION)	1-480702-0
	2	RECEPTICAL	1-480703-0
	8	SOCKET	350689-1
	8	PIN	350690-1
5	1	SWITCH DIMMER	A101SYCB
6	4	LAMP BLUE (28V)	5073918-1434-600
	4	LAMP GREEN (28V)	5073918-1432-600
	2	LAMP RED (28V)	5073918-1431-600

THIS PAGE INTENTIONALLY LEFT BLANK

SECTION 18: CONTROL CONSOLE



CONTROL CONSOLE – AMPHIB.
FIGURE 27

WIPLINE MODEL 6000 / 6100 FLOAT PARTS MANUAL

ITEM	QTY	FIGURE 27: CONTROL CONSOLE – AMBHIB. PART DESCRIPTION	PART NO.
1	1	ASS'Y. CONSOLE	6A11000-001
2	1	COVER TOP CONSOLE	6A11156-024
3	1	COVER CONSOLE BACK	6A11005-084
4	1	BODY CONSOLE	6A11005-085
5	1	HANDLE, WATER RUDDER RETRACT	6A08414-002
6	1	PLACARD, SELECTOR	5A3-694
7	1	HOUSING, SELECTOR	6A11190-001
8	1	BALL –GEAR SELECTOR	6A11704-001
9	1	ARM GEAR, SELECTOR	6A11032-002
10	1	BUSHING	6A11278-001
11	1	PLATE, SELECTOR MOUNT	6A11190-001
12	1	CONTROL VALVE	6A09000-080
	1	REPAIR KIT	KD70119
13	1	HAND PUMP	1280114-2
14	1	ASS'Y CHECK VALVE	6A09000-024
	1	BODY CHECK VALVE	6A09258-003
	1	CHECK VALVE	2203C-1
	3	"O"RING	MS28775-012
	1	ELBOW	MS20822-4D
	1	FTG., HAND PUMP	6A11705-001
15	2	FTG., TEE SELECTOR VALVE	6A11261-005
16	2	PULLEY	MS20219-02
	2	BOLT, ATTACH	AN4-17A
	2	WASHER	NAS1149D0463J
	2	NUT	MS21044N4
17	1	HANDLE	6A11506-001

WIPLINE MODEL 6000 / 6100 FLOAT PARTS MANUAL

ITEM	QTY	FIGURE 27: CONTROL CONSOLE – AMBHIB. PART DESCRIPTION	PART NO.
18	4	LAMP, BLUE (28 V)	5073918-1434-600
	4	LAMP, GREEN (28 V)	5073918-1432-600
	2	LAMP, RED (28 V)	5073918-1431-600
19	1	KNOB, SELECTOR	6A11603-002
	1	WASHER, SELECTOR KNOB	6A11274-002
20	1	PANEL, RETRACT HANDLE, RT.	6A11003-024
	1	PANEL, RETRACT HANDLE, LT.	6A11003-025

PARTS MANUAL
For
MODEL 6000/6100 WIPLINE FLOATS
Item No. 1002177



1700 Henry Ave. – Fleming Field
South St. Paul, MN 55075 USA
Phone: (651) 451-1205
Fax: (651) 451-1786
www.wipaire.com