



WIPLINE FLOATS • SKIS • MODIFICATIONS • AIRCRAFT SALES
AVIONICS • INTERIOR • MAINTENANCE • PAINT REFINISHING

SERVICE LETTER NUMBER 168

10000A AND 13000A MAIN GEAR DRAG BRACE TUBE REPAIR

By: RCG	Aircraft Makes/Model(s): AT-802, AT-802A, DHC-6 Series	Float Model(s): 10000A, 13000A	Note(s): Optional Compliance Service Letter P/N 1008793 ECO 24993
Approved: JRS			
Date: 3/22/2017			
Rev: B			

LOG OF REVISIONS

Revision	Description	Date
A	Initial release	4/27/2016
B	Added note regarding previous revisions of drag strut having different hardware. Corrected quantity from (5) AN8-14A bolts to (6).	3/22/2017

FAA approval has been obtained for technical data in this publication that affects STC or TSO design compliance

EFFECTIVITY:

This service letter applies to: AT-802, AT-802A with Wipline 10000 amphibious floats S/N 10164 and prior installed per STC SA01795CH, and DHC-6 Series with 13000 amphibious floats S/N 13216 and prior installed per STC SA2CH.

COMPLIANCE:

Inspection of the main gear drag brace tube for cracks is mandatory. If cracks are found, replacing the washers per service letter 168 is mandatory. If no cracks are found, compliance with service letter 168 is optional.

BACKGROUND:

Cracks have been found on the main gear drag brace tube due to stress when torquing the nuts. A custom washer has been made to replace the current washers in the main gear drag brace tube.

COMPLIANCE METHOD:

Inspect main gear drag brace tube for cracks and replace tube and washers per service letter 168 if cracks are present. If no cracks are found, compliance with service letter 168 is optional. If revision A has been complied with, no action is needed.

APPROXIMATE SHOP HOURS:

Replacing the main gear drag brace tube and washers will take approximately 3 hours per float after aircraft has been jacked.

WARRANTY INFORMATION:

Labor not included for this modification. Hardware provided with service kit.

TECHNICAL DATA:

Copies of this service letter, associated service kit, float service manual, and float parts manual are available at www.wipaire.com

ITEMS PROVIDED IN SERVICE KIT

ITEM	QTY	PART NUMBER	DESCRIPTION
1	6	1008027	Custom Drag Brace Washer
2	6	MS21044N8	Nut, Locking, Regular Height, 1/2-20 UNF

1700 Henry Ave - Fleming Field (KSGS), South St. Paul, MN 55075

Phone: 651.451.1205 | Fax: 651.457.7858

www.wipaire.com

WORK INSTRUCTION

1. Safely jack aircraft so all wheels are off the ground when the main gear is extended
2. Run the gear up so that the main carriage is approximately 2 inches forward of the down lock position
3. Disconnect the brake calipers and allow them to securely hang
4. Remove the (1) AN10-46A bolt and associated (2) NAS1149F1032P washers and (1) MS21044N10 nut that attach the main gear axle fittings to the shock strut assembly

WARNING!

**The main gear assembly will detach from the float after completing step 5.
Support the assembly appropriately prior to removing the attaching hardware.**

5. Remove the (2) AN10-31A bolts and associated (2) NAS1149F1063P washers and (2) MS21044N10 nuts that attach the drag brace assembly to the carry thru straps
6. Remove the top (6) AN8-14A bolts (figure 1, item 1) and associated (12) NAS1149D0863J washers (figure 1, item 2) and (6) MS21044N8 nuts (figure 1, item 3)

NOTE: Previous drag brace assembly models have (4) AN8-14A bolts and (2) AN8-13A bolts in place of the (6) AN8-14A bolts

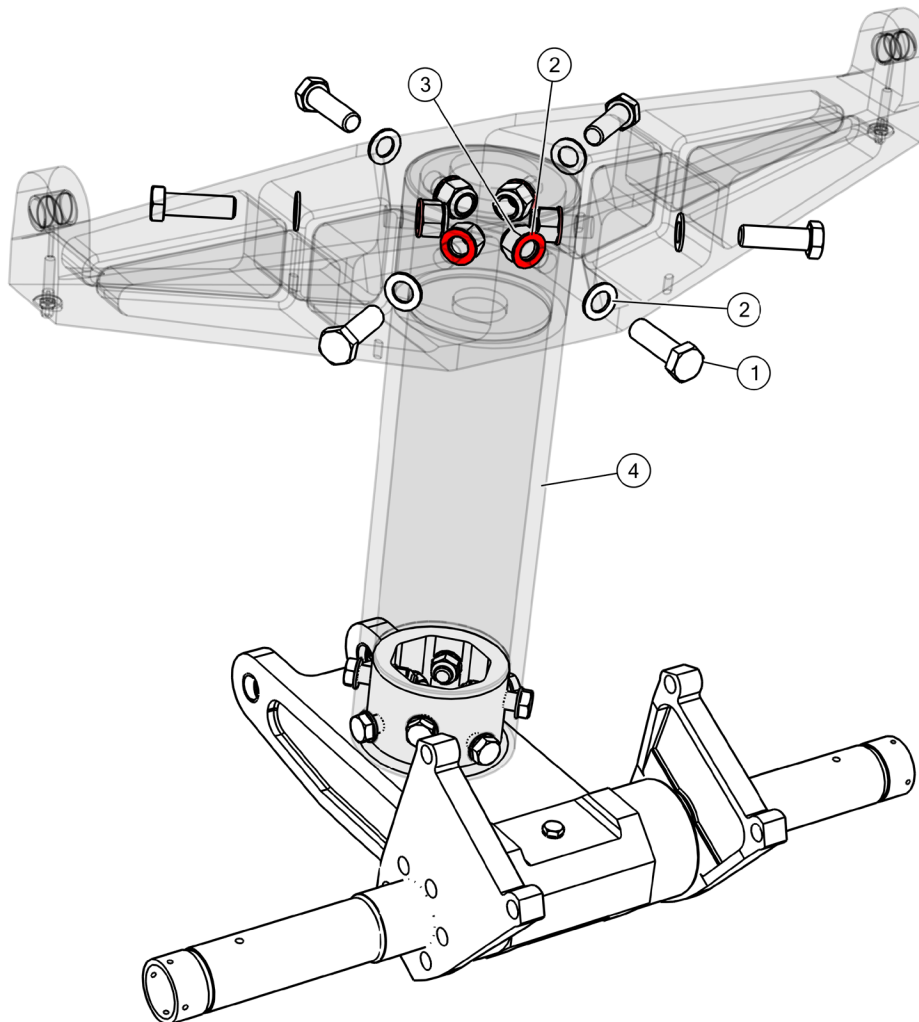


FIGURE 1: DRAG BRACE ASSEMBLY (TIRES NOT SHOWN)

7. Inspect 13A04289-001 main gear drag brace tube for cracks where the (6) bolts were removed from. Replace the main gear drag brace tube if cracks are found
8. Replace the (6) NAS1149D0863J washers (shown as red in figure 1) with (6) 1008027 custom drag brace washers (shown as red in figure 2) and reassemble using new MS21044N8 nuts provided as shown in figure 2

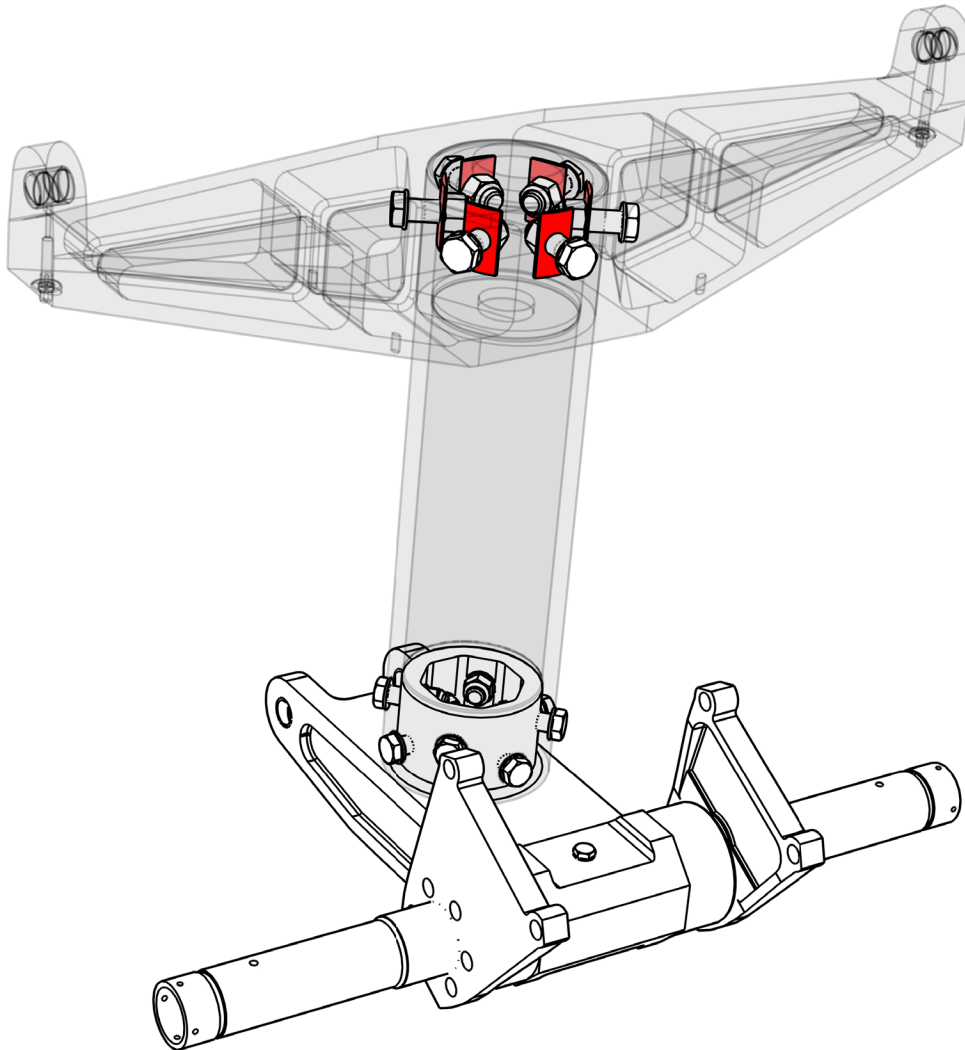


FIGURE 2: DRAG BRACE ASSEMBLY WITH REVISED WASHERS (TIRES NOT SHOWN)

9. Reassemble the main gear to aircraft and return aircraft to service

NOTES:

1. Upon completion of inspection, enter information in Aircraft Logbook for completion of Wipaire Service Letter 168
2. Once service letter is accomplished, please visit www.wipaire.com and update your aircraft service letter/kit record using the link found on the Customer Support dropdown menu under "Update Service Letter & Kit Compliance Status"