

- MANUFACTURERS OF WIPLINE FLOATS
- SPECIALISTS IN AIRCRAFT MODIFICATIONS

SERVICE LETTER: #20

SUBJECT: Inspection of Fuselage Lateral Support Beam

EFFECTIVITY: Cessna 208 Caravan with Wipline 8000 floats,
built before January 1, 1990

COMPLIANCE: To inspect for cracks around .81 dia. drag wire holes in lateral support beam. Remove the main gear access cover located on the belly of the aircraft, that covers the lateral support beam. Locate hole where the drag wire goes thru, and visually inspect for cracks around hole, apply dye penetrant to determine if cracks are present, and to what extent they have developed. See sketch for area to be modified, also remove drag wires and inspect for corrosion, clean any corrosion and apply a flim of grease in the hole and on the wire prior to reinstallation.

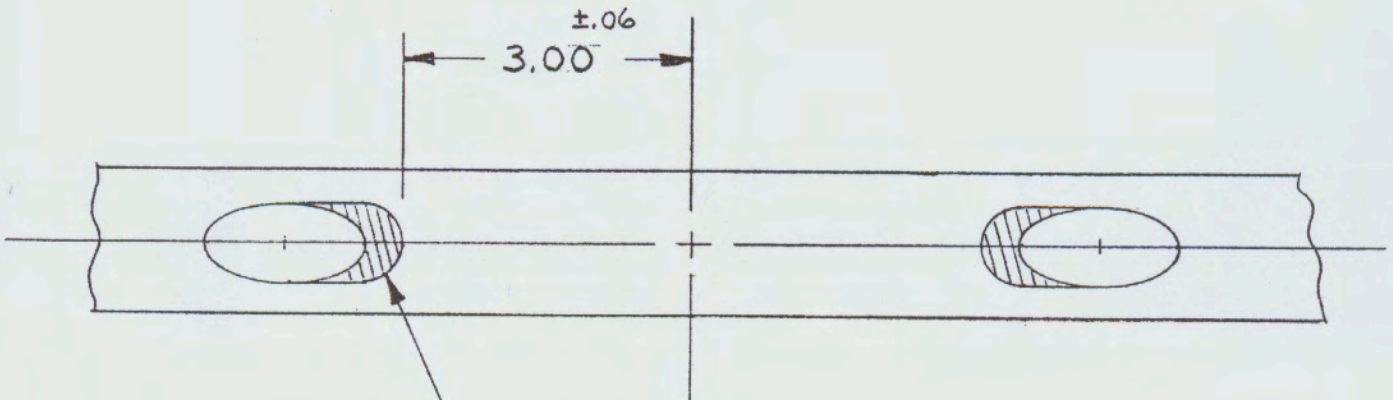
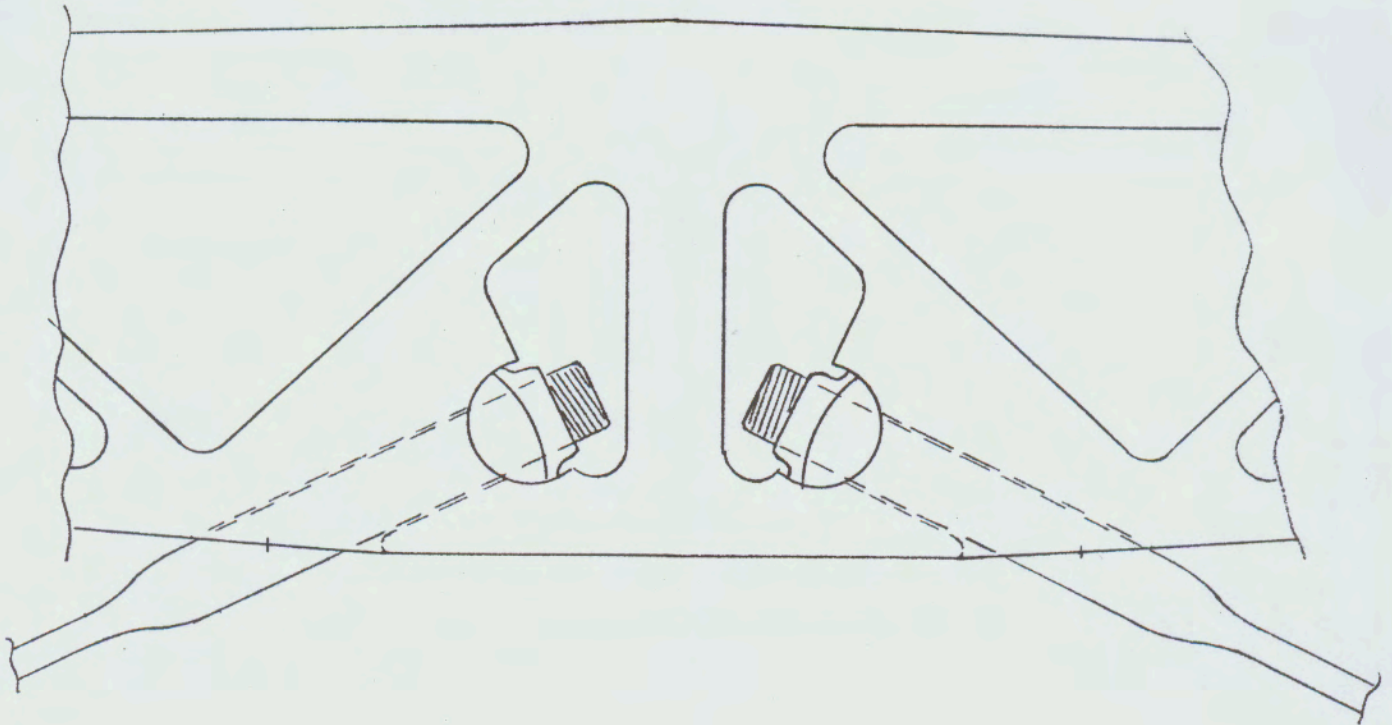
METHOD OF COMPLIANCE: Inspect within next 10 hours of operation, then annually or at 100 hr. inspections.

PARTS REQUIRED: None unless cracks or corrosion is unrepairable

Date: February 2, 1990

Page: 1 of 2

SKETCH S/L 20



RELIEF AREA—REMOVE
ALUMINUM AS SHOWN
.406 $\pm .015$ RADII
BREAK EDGE AROUND HOLE
.06-.12 RADII