



www.wipaire.com

- MANUFACTURERS OF WIPLINE FLOATS & SKIS
- SPECIALISTS IN AIRCRAFT MODIFICATION

1700 Henry Avenue - Fleming Field
South St. Paul, MN 55075
651-451-1205

SERVICE LETTER: #69

DATE: February 24, 2005 – Updated July 20, 2005

TITLE: Replacement of main gear drag link bearings (item 3.1 on attached diagram)

EFFECTIVITY: 2100A Floats S/N 21125 up to 21540A,
2350A Floats S/N 23025 up to 23078A,
3000A Floats S/N 3009 up to 30138A,
3450A Floats S/N 34001 up to 34164A.

COMPLIANCE: Inspect for migrating bearings.

BACKGROUND INFORMATION:

On some main gear drag links, the bearings (item 3.1 on attached diagram) have been reported to migrate out.

Inspect your landing gear for bearing installation. If bearings are properly seated, just inspect for wear. If bearings are partially or completely out, replace with flanged style bearings.

This style bearing with the flange will not allow migration.

Install per below sketch.

METHOD OF COMPLIANCE: Remove bearings, replace with flanged style (Item 3.1 on attached diagram).

PARTS REQUIRED: (4) 08FDU12 bearings for 2100, 2350 (4) 10FDU10 bearings for 3000, 3450

SHOP HOURS REQUIRED: 6 hrs

WARRANTY: Parts only for 18 months past the original issuance of this service letter.



www.wipaire.com

- MANUFACTURERS OF WIPLINE FLOATS & SKIS
- SPECIALISTS IN AIRCRAFT MODIFICATION

1700 Henry Avenue - Fleming Field
South St. Paul, MN 55075
651-451-1205

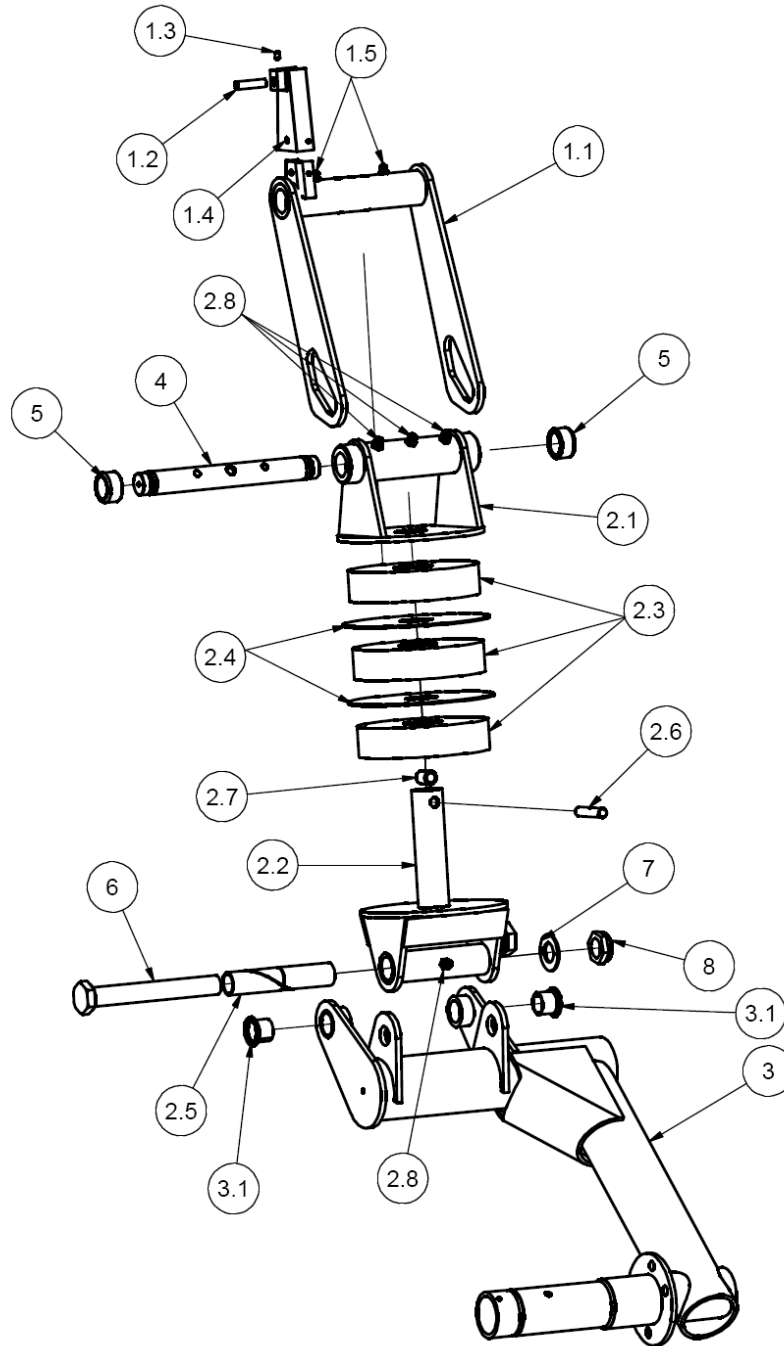


Diagram referenced from Wipaire parts manual. Bushing in question is item 3.1. Replace with flanged bushing (08FDU12 for 2100/2350; 10FDU10 for 3000/3450).

Please refer to the service manual for your float model for information on removing the drag link and gear system.



www.wipaire.com

- MANUFACTURERS OF WIPLINE FLOATS & SKIS
- SPECIALISTS IN AIRCRAFT MODIFICATION

1700 Henry Avenue - Fleming Field
 South St. Paul, MN 55075
 651-451-1205

Parts List			
ITEM	QTY	PART NUMBER	DESCRIPTION
1	1	30A05000-042	ASS'Y - ARM RETRACT - DRAG LINK
1.1	1	30A05000-041	ASS'Y - ARM RETRACT - DRAG LINK
1.2	1	#24 MAGNET	CYLINDRICAL MAGNET
1.3	1	10-32 X 3/16 S.S. CP	SET SCREW
1.4	1	30A05214-007	PROX. SWITCH HOLDER
1.5	2	GREASEZERK	COMMON GREASEZERK
2	1	30A04000-100	ASS'Y - SHOCK STRUT - 3000-3450
2.1	1	30A04000-093	ASSEMBLY - END SHOCK STRUT - UPPER
2.2	1	30A04000-120	ASSEMBLY - END SHOCK STRUT - LOWER
2.3	3	30A04565-004B	BUSHING - POLYURETHANE - SHOCK STRUT
2.4	2	30A04162-036	SPACER - SHOCK STRUT
2.5	1	30A04475-006	BUSHING - LOWER SHOCK STRUT
2.6	1	30A04476-004	PIN - RETAINING, SHOCK STRUT
2.7	1	30A04459-002	SLEEVE - SHOCK STRUT RETAINER - 3000-3450
2.8	4	GREASEZERK	COMMON GREASEZERK
3	1	30A04000-091	DRAG LINK - MAIN GEAR 3000
3.1	2	10FDU10	FLANGED BUISHING
4	1	30A04454-007	SHAFT - AXLE - SHOCK STRUT
5	2	21A05520-003	ROLLER, SHOCK STRUT - RETRACT
6	1	30A05702-016	BOLT - DRAG LINK
7	1	NAS1149F1063P	WASHER
8	1	MS21083N10	NUT

Parts list shown is for 3000/3450. For 2100/2350 use Bushing P/N 08FDU12