 <p style="text-align: center;"> • MANUFACTURERS OF WIPLINE FLOATS & SKIS • SPECIALISTS IN AIRCRAFT MODIFICATION </p> <p style="text-align: center; font-size: small;"> 1700 Henry Avenue - Fleming Field South St. Paul, MN 55075 651-451-1205 </p>			Rev E
			Date 1/10/08
Prepared by Ellen Parker	Aircraft Make / Model CESSNA 208 CARAVAN	Float / Ski Model 8000 Floats	Page 1 6
FAA Reviewed <input checked="" type="checkbox"/>	Title FIREWALL MODIFICATION ON CESSNA 208 CARAVAN		
ALL INFORMATION IN THIS SERVICE DOCUMENT BASED ON FAA APPROVED DATA			

DATE: April 26, 1999

REVISION D DATE: December 29, 2007

SERVICE KIT: #24

SUBJECT: Firewall Modification

MODEL: Cessna 208 Caravan

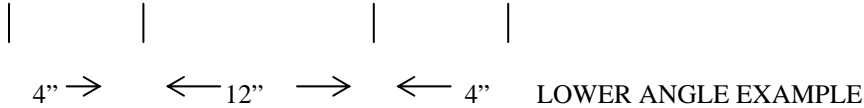
	<u>Part #</u>	<u>Description</u>	<u>Drawing Item #</u>	<u>Quantity</u>
#1	Installation Drawing #1001029			
	1001025	Doubler, Firewall w/ relish tray, Right	10	1
	1001024	Doubler, Firewall w/ relish tray, Left	20	1
	1001023	Strap, Firewall w/ relish tray	30	2
	2605041-3	Placard	40	1
	2605010-2	Placard	50	1
	MS20615-4M6	Rivet	60	100
	MS20615-4M7	Rivet	70	150
	MS20615-4M10	Rivet	80	50
	1002084	Strap, Relish Tray, Firewall		1
	1002085	Spacer, Boiler Plate, Firewall		2
#2	Installation Drawing #1001028			

**Option #2, Drawing #1001028 no longer available.
Refer to #1 for installation.**

INSTALLATION INSTRUCTIONS - FIREWALL MODIFICATIONS

1. REMOVE COWLINGS.
2. DISCONNECT BATTERY.
3. REMOVE PILOT AND CO-PILOT SEATS & STEPS.
4. REMOVE COCKPIT FLOOR CARPET
5. REMOVE PILOT AND CO-PILOT FWD FLOOR AND CONTROL COLUMN COVERS.
6. REMOVE LH AND RH COCKPIT OUTBOARD KICK PANELS.
7. REMOVE KG102 GYRO AND DME PROCESSOR IF INSTALLED/RH SIDE.
8. REMOVE PILOTS LH RUDDER PEDAL
9. REMOVE CO-PILOTS RH RUDDER PANEL.
10. REMOVE MAIN CONTRACTOR BOX COVER.
11. REMOVE 8 WIRE CLAMPS FROM OUTER CONTACTOR BOX.
12. REMOVE WIRE FROM RESPECTIVE RELAYS AND LABEL WIRES AND CONTACTOR BOX RELAYS #1, #2.
13. REMOVE AND STORE WIRES FROM SMALL POST AND MIDDLE POST AT EXTERNAL POWER RECEPTACLE.
14. DISCONNECT, PLUG AND CAP HYD BRAKE LINE AT FIREWALL.
15. REMOVE CONTRACTOR BOX FROM FIREWALL.
16. DISCONNECT, MOVE ASIDE OVER-BOARD DRAIN LINE FROM FUEL NOZZLE (EPA CAN) DRAIN CAN, PLUG AND CAP CONNECTORS.
17. REMOVE AND RETAIN "EPA CAN – DRAIN" PLACARD.
18. REPOSITION "FUEL FILTER DRAIN DAILY" PLACARD TO BETWEEN FUEL FILTER ATTACH BRACKETS AT FIREWALL.
19. REMOVE MAIN BATTERY – COVER BATTERY POSTS FOR SAFETY WITH MASKING TAPE OR APPROPRIATE COVER.
20. REMOVE MAIN BATTERY UPPER LATCH PLATE AND LOWER MOUNT ALIGNMENT PLATE.
NOTE: MARK POSITION OF BOTH UPON REMOVAL.
21. REMOVE FIBERGLASS MAT INSULATOR FROM MAIN CONTACTOR BOX MOUNT AT FIREWALL, AND RETAIN.
22. REMOVE AND PLACE ASIDE, THE BRAKE LINE BULKHEAD FITTING, AT FIREWALL.

23. LAY DOUBLER UP TO FIREWALL AND CHECK GENERAL FIT – LH PLATE DOUBLER.
24. ALIGN AS BEST AS POSSIBLE, WHERE DOUBLER MEETS FIREWALL ASSEMBLY. CHECK FIT OF REMAINING DOUBLER AT ALL OTHER POINTS AND TRACE OUTLINE OF PLATE ON FIREWALL
25. CUT OUT A 12” SECTION OF LOWER CONTRACTOR BOX & FIREWALL MOUNT ANGLE, CHECK ALIGNMENT OF DOUBLER FIRST. SEE NEXT STEP.
26. TRIM DOUBLER AND CONTRACTOR BOX MOUNT ANGELS TO ACCOMMODATE PLATE.



NOTE: REMOVE 7 BOLTS FROM PAN LH/RH *8A1211-001 (RH #-002) EXISTING PAN INSTALL ONLY.

27. REMOVE AND/OR ROLL UP THE INSULATION BLANKET ON THE AFT (CABIN) SIDE OF THE FIREWALL.
28. REMOVE ALL EXISTING FASTENERS IN THE FIREWALL SHEET IN OUTLINED AREA FOR PLACEMENT OF THE REINFORCMENT DOUBLERS, BOTH SIDES.

**NOTE:
IF SOME EXISTING RIVIT LOCATIONS DON'T MEET EDGE
DISTANCE, NOTCH OUT THE DOUBLER.**

29. CHECK FIT OF THE DOUBLERS ONE LAST TIME. TAPE DOUBLERS IN PLACE TO THE FIREWALL AND HAVE AN ASSISTANT HOLD IN PLACE. THEN BACKDRILL ALL EXISTING FASTENER LOCATIONS AND CLECO INTO PLACE AS YOU GO.
30. REMOVE DOUBLERS FROM THE FIREWALL AND DEBUR ALL THE HOLES. LAY OUT ALL THE NEW FASTENER LOCATIONS ON THE DOUBLERS, NOTING EXISTING STRINGERS AND SUB-STRUCTURE ON THE BACKSIDE OF THE FIREWALL.
31. ETCH, ALODINE AND PRIME DOUBLERS. APPLY SEALANT P/N DAPCO 2100, CMNP009C, TY II TO THE BACKSIDE AND INSTALL USING SANDARD RIVIT PRACTICES.

**NOTE:
USE TEMPLATE #1001024 & 25 INCLUDED WITH KIT PN 1002029
AS A RIVETING REFERENCE. THE RIVET PLACEMENT ON
THESE DRAWINGS TO BE USED AS AN APPROXIMATE
REFERENCE FOR DISTANCE AND RIVET-COUNT; IT IS NOT
NECESSARY TO FOLLOW IT EXACTLY. THERE IS INDICATION
ON THE TEMPLATE DRAWINGS FOR WHICH RIVITS GET BACKDRILLED.**

32. INSTALL NUTPLATES IN THE DOUBLER FOR CONTACTOR BOX INSTALLATION. EDGE SEAL DOUBLERS TO THE FIREWALL.
33. INSTALL PLACARDS AS REQUIRED.
34. INSTALL ALL ASSEMBLIES AND PARTS REMOVED PRIOR TO INSTALLATION.

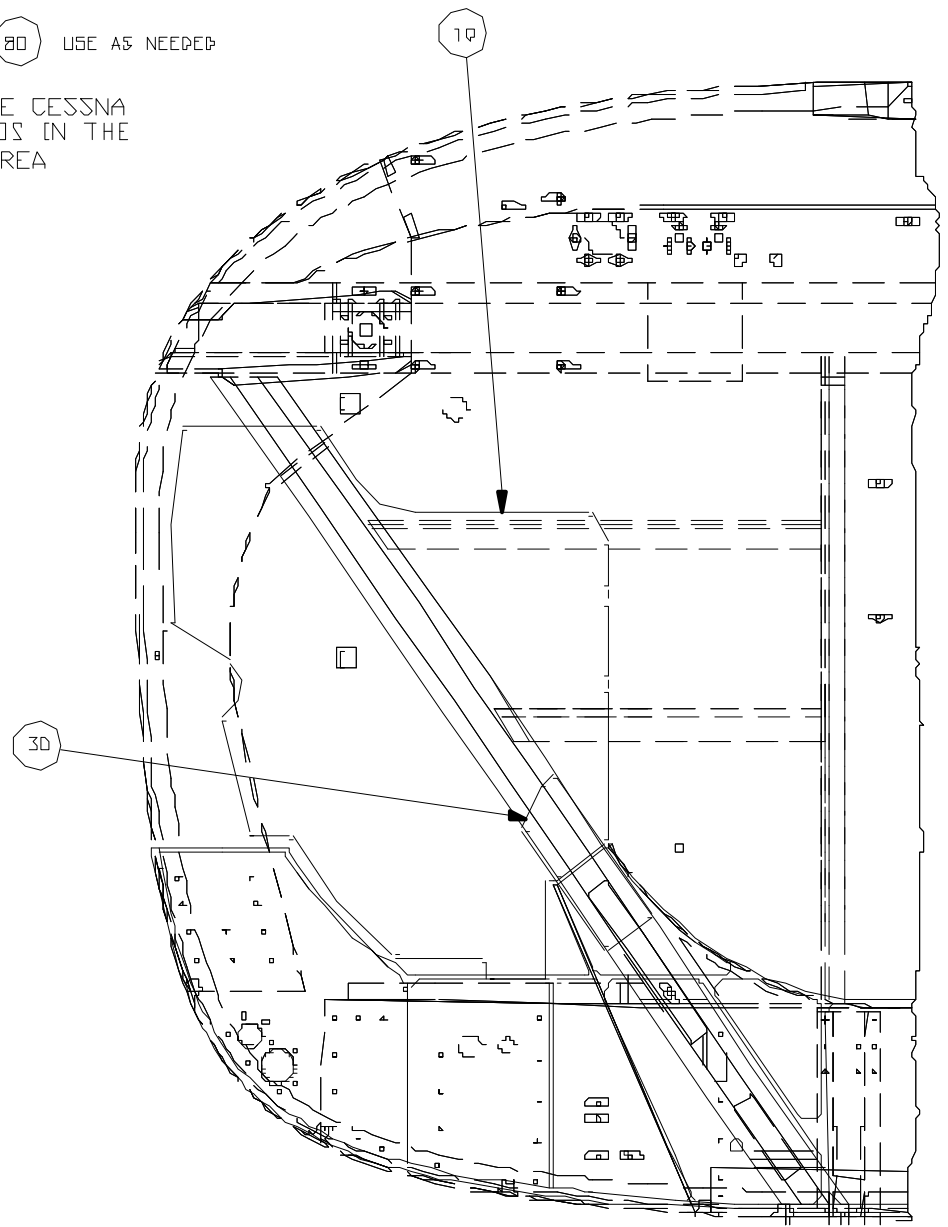
REV	DATE	ECO	REVISION STORY	DESCRIPTION
A	02/19/05	20104	D.F.	RELEASE
B	03/15/05	20107	D.F.	C HAN GED RIVET PINS
C	06/20/05	20661	SSJ	ADDED 1.00 2.00 3.00 4.00 5.00
D	05/18/07	20951	R.CHEWK	REMOVED P.I.F.R.O.M.W.G.
E	12/27/07	21073	A.J.G.	ADDED P.I.T.O.D.W.G.

NOTE:
1. (40) (50) USE AS REQUIRED

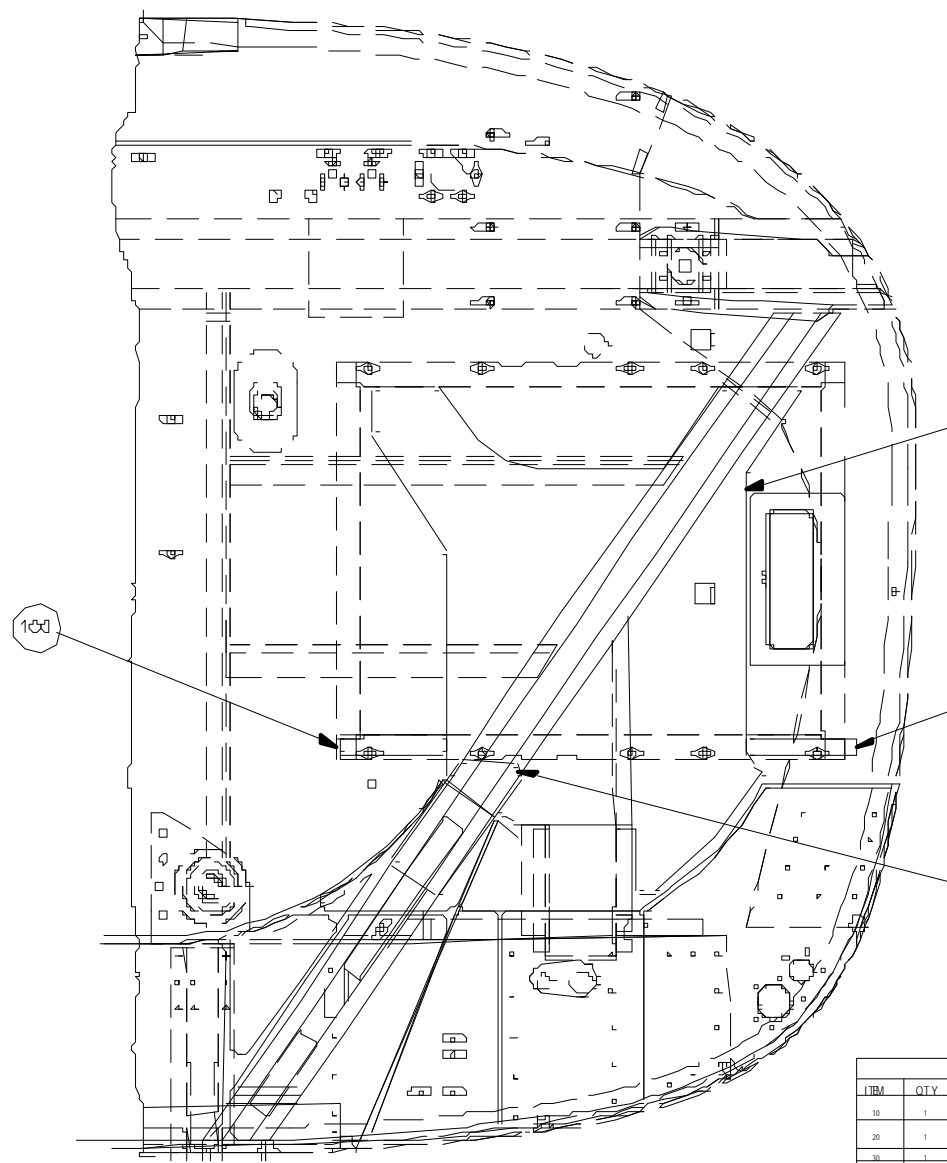
(60) (70) (80) USE AS NEEDED

2. REPLACE CESSNA PLACARDS IN THE APRX. AREA

(40) (50)



RH SIDE FIREWALL



LH SIDE FIREWALL

NOTES:
1. WT & BALANCE ADJUSTMENT THIS INSTALLATION +0.13 AT +1493.00

ITEM	QTY	PART#	DESCRIPTION
10	1	1001025	D CLIP BR - FR E/W L&E & HT BRV R GH HEAVY
20	1	1001024	D CLIP BR - FR E/W L&E & HT BRV L GH HEAVY
30	1	1001023	S TRB P-RE & HT BRV L BEWAL
40	1	24050413	P PLACARD
50	1	24050102	P PLACARD
60	100	M S 2041546	BRET
70	150	M S 2041540	BRET
80	50	M S 20415 40	BRET
90	1	1002084	S TRB P-RE & HT BRV L BEWAL
100	2	1002085	S PNC BR - B CLIP FR TE, R FIREW

MAIL SECTION

WIP AIRE, INC.
170 D HEURY AVENUE SOUTH ST. P. ALABAMA 36805
(651) 451 4205

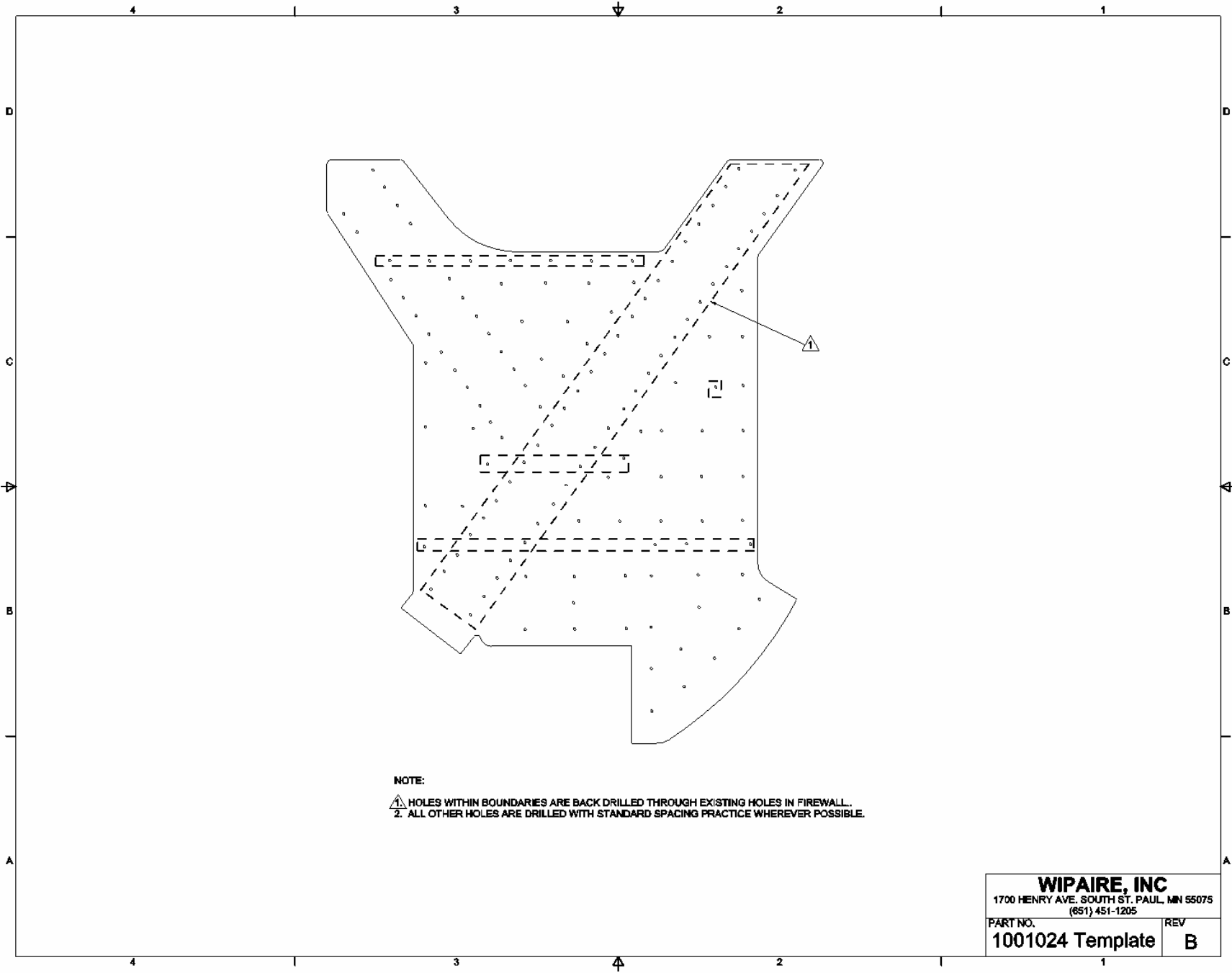
FILE
KIT - B E E F-U FIREWALL
WITH RE USH TRAY, HEAVY

SCALE
D 1:3

PART NO. 1001029

REV E

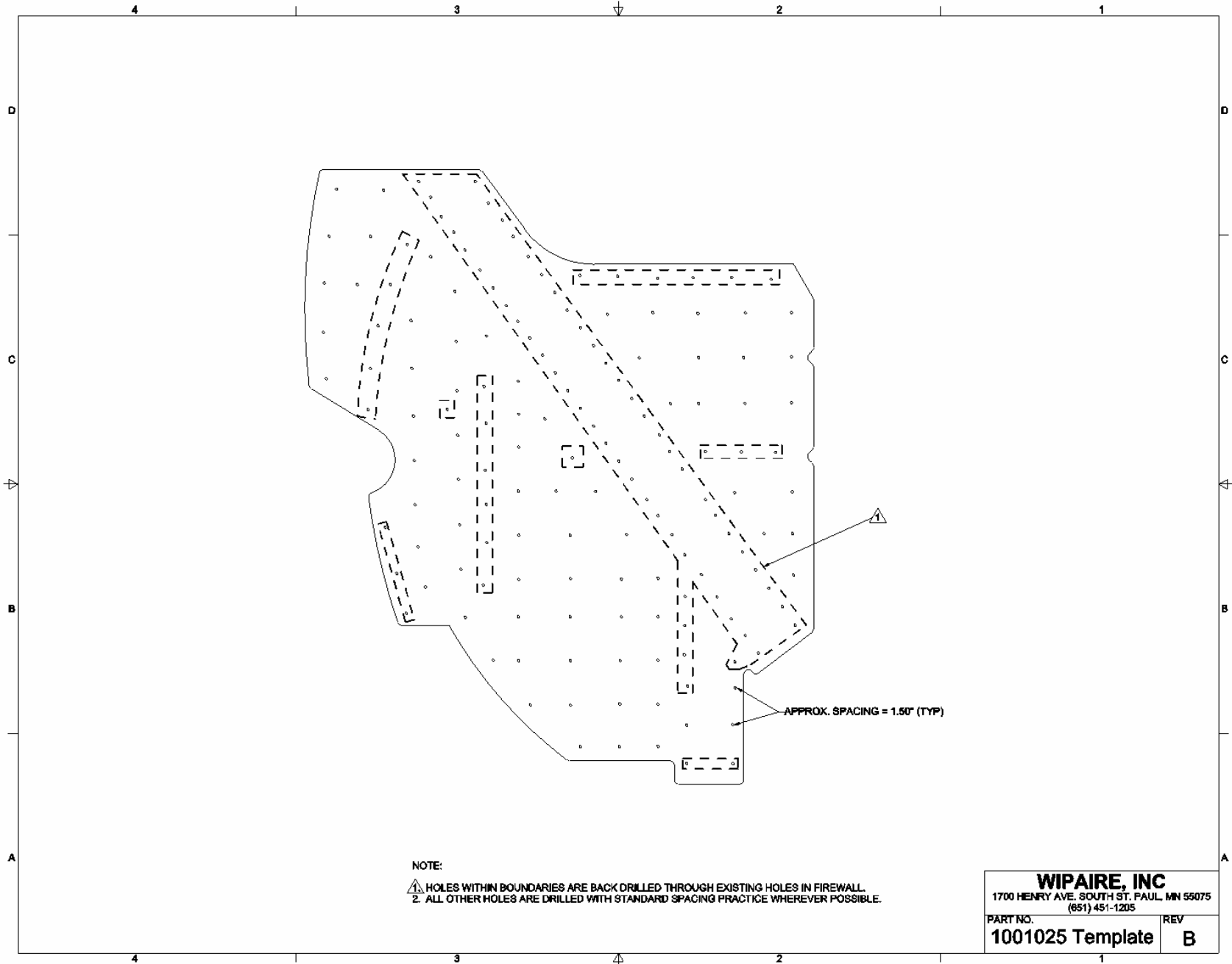
Sheet 1 of 1



NOTE:

- 1. HOLES WITHIN BOUNDARIES ARE BACK DRILLED THROUGH EXISTING HOLES IN FIREWALL.
- 2. ALL OTHER HOLES ARE DRILLED WITH STANDARD SPACING PRACTICE WHEREVER POSSIBLE.

WIPAIRE, INC	
1700 HENRY AVE. SOUTH ST. PAUL, MN 55075 (651) 451-1205	
PART NO. 1001024 Template	REV B



NOTE:

- 1. HOLES WITHIN BOUNDARIES ARE BACK DRILLED THROUGH EXISTING HOLES IN FIREWALL.
- 2. ALL OTHER HOLES ARE DRILLED WITH STANDARD SPACING PRACTICE WHEREVER POSSIBLE.

WIPAIRE, INC	
1700 HENRY AVE. SOUTH ST. PAUL, MN 55075	
(651) 451-1205	
PART NO.	REV
1001025 Template	B