



- MANUFACTURERS OF WIPLINE FLOATS & SKIS
- SPECIALISTS IN AIRCRAFT MODIFICATION

1700 Henry Avenue - Fleming Field
South St. Paul, MN 55075
651-451-1205

SERVICE KIT: #53

DATE ISSUED: Rev. C April 6, 2006_OPTIONAL

SUBJECT: 802 Air Tractor Fly Wire Installation

MODEL: Floated AT-802 Air Tractors

INSTRUCTIONS:

Figure #2

1. With aircraft weight on wheels, jack wing slightly at the tie-down point forward of the aileron inboard hinge.
2. Remove spreader bar AN 8-32A bolt using bullet.
3. Using a 2nd bullet, install eyebolt and align.
4. Remove wing jack.

Figure #3 Area

1. With small piece of wood for protection, clamp kicker strut fitting shown in Figure 4 (p/n 10A02030-009, -010) to airframe tube and remove aft bolt (NAS 154DH56) and washers equal to the thickness of the wire-pull (1/4").
2. Re-install bolts and torque as per Air Tractor Manual.

Tension Wire Installation

1. Attach tension wire with provided hardware.
2. Snug nuts for tension wire finger tight and then 1 full turn making sure the wire chord is streamlined with the airflow.
3. Snug jam nuts (2 per tension wire).
4. Repeat procedure for opposite side.
5. Tighten opposite side until the measurement from clevis to clevis is within 1/16" of other side and tension wire is snug.
6. Tighten jam nuts.

NOTE:

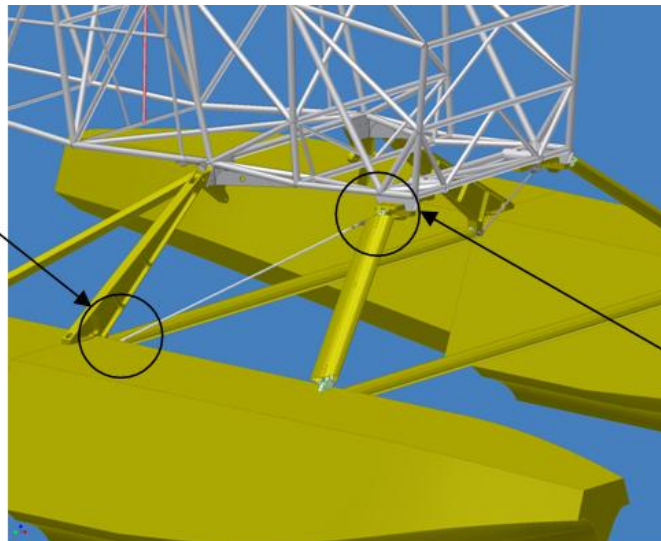
**This Service Kit to be completed with floats installed.
If new tension wires whistle and vibrate in flight adjust the chord of the tension wire to match airflow.**

NOTE:

	<u>WT.</u>	<u>ARM</u>	<u>MOM.</u>
2 Wires	4.12 lbs	19.0"	78.28
2 Lugs	1.10 lbs	0"	0"
TOTAL	5.22 lbs	15.0"	78.28"

Item	P/N	Description
1	34A02000-209	FLY WIRE ASSEMBLY
2	1001550	LUG - UPPER FWD - FLYWIRE - AT802
3	MS24665-302	COTTER PIN
4	MS20392-5C21	CLEVIS PIN
5	NAS154DH56	BOLT
6	MS20002-14	WASHER
7	3088A325	SHIM
8	AN365-820	NUT
9	AN960-816	WASHER
10	1001551	EYEBOLT

See Figure 2



See Figure 3

Figure 1

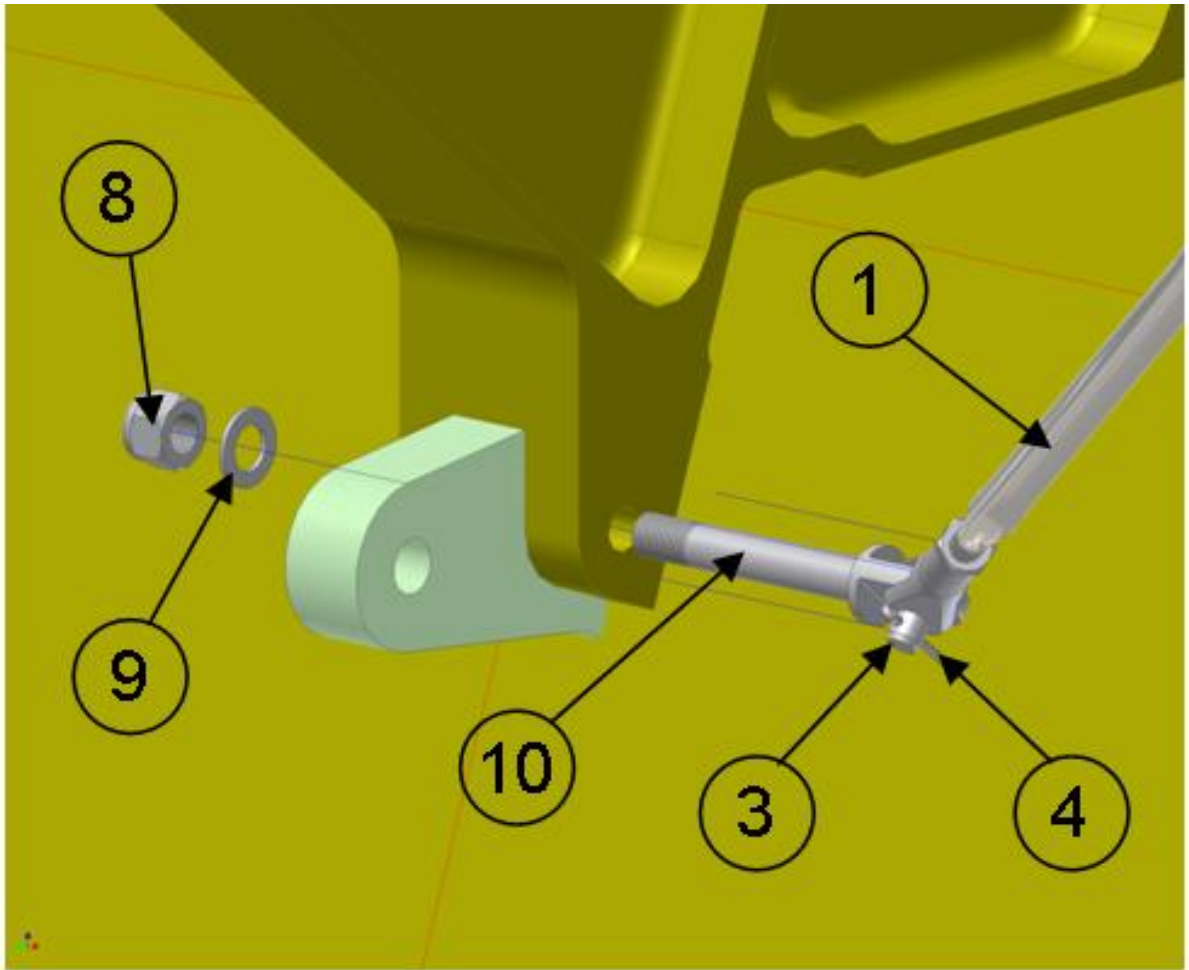


Figure 2

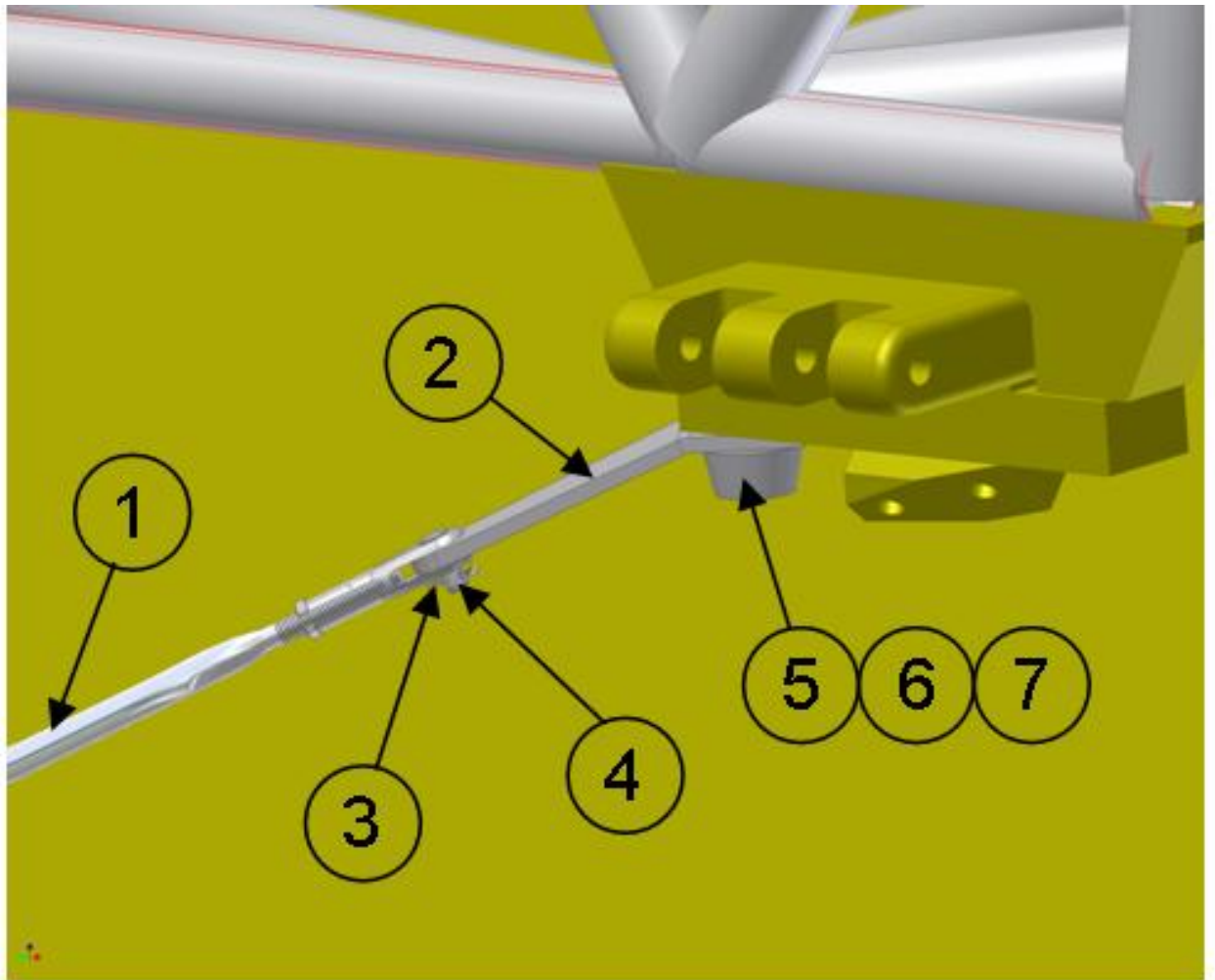


Figure 3

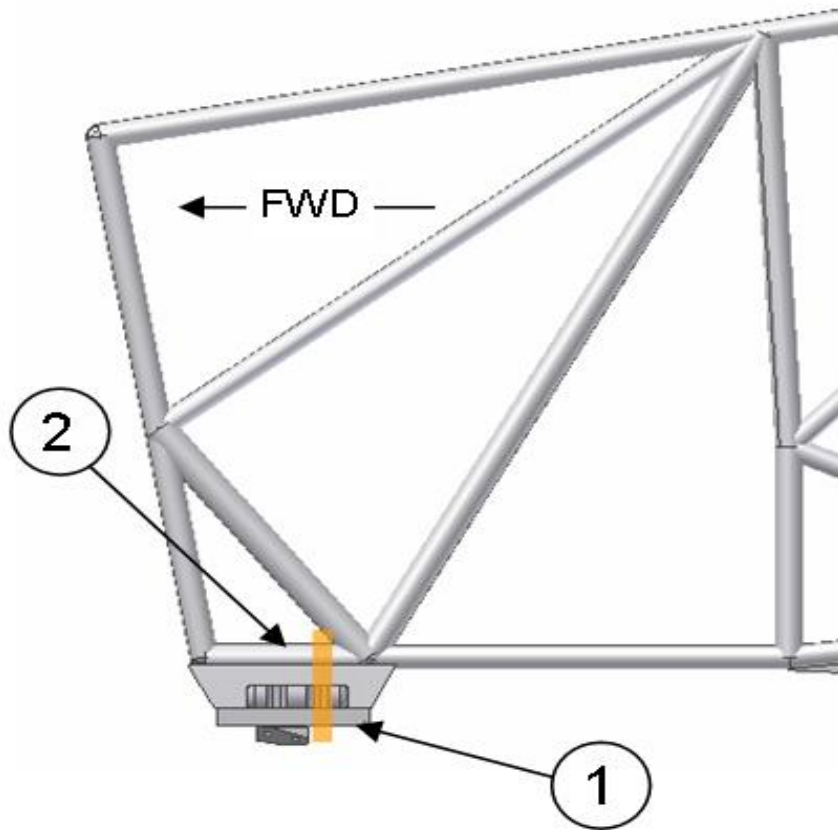


Figure 4