



• MANUFACTURERS OF WIPLINE FLOATS & SKIS
• SPECIALISTS IN AIRCRAFT MODIFICATION

1700 Henry Avenue - Fleming Field
South St. Paul, MN 55075
651-451-1205

Rev
A

Date
1/27/2006

Prepared by
Ellen Parker

Aircraft Make / Model
HUSKY A-1B with 110" Flaps Installed

Float / Ski Model
MODEL 2100 FLOATS

Page
1
2

FAA Reviewed

Title
UPDATES FOR THE HUSKY LONG FLAP INSTALLATION

ALL INFORMATION IN THIS SERVICE DOCUMENT BASED ON FAA APPROVED DATA

SERVICE KIT: # 56

DATE: September 30, 2007

EFFECTIVITY: Aircraft Serial #2285, 2288, 2289, 2291 & Up

COMPLIANCE: Install P/N 21A08154-009 Rudder Stops as per Wipaire Installation Drawing 10C1-6019. After this is accomplished, the hardware and other included parts need to be added to the required inspections at 100 Hour or Annual Inspection and inspected accordingly.

BACKGROUND INFORMATION: Flight testing has shown that the Husky A-1B's with the 110" flaps require water rudder stops to be installed to meet the minimum flight stability requirements.

METHOD OF COMPLIANCE: Install the rudder stops as per Wipaire Installation Drawing 10C1-6019.

PARTS REQUIRED:

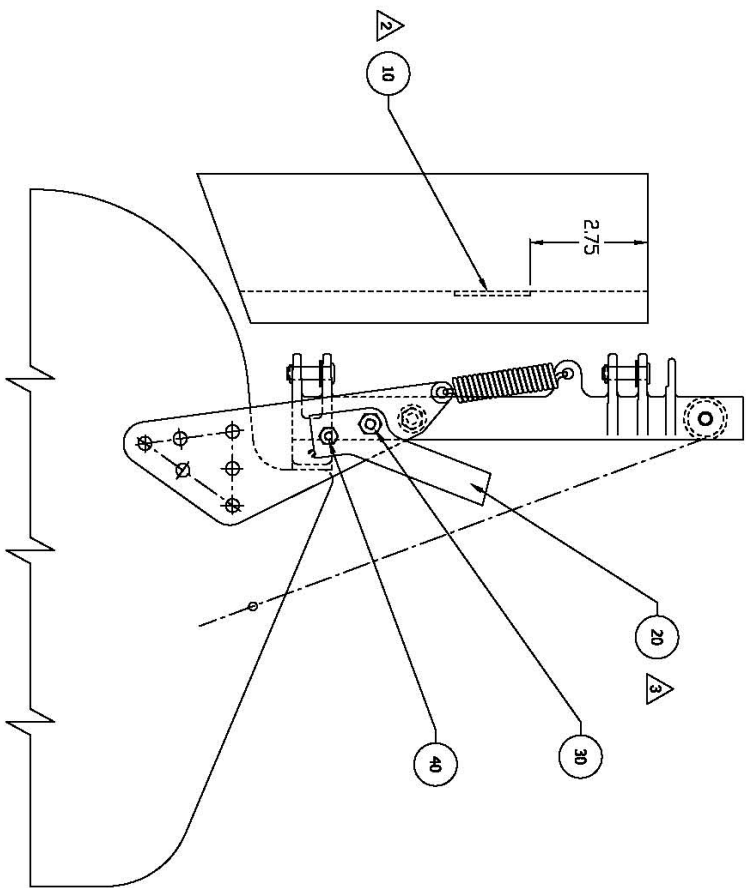
KIT P/N 1002537 which includes the following:

21A08154-009 Stop (4)
21A08156-130 Plate Stop (4)
AN4-7A Bolt (2)
AN3-7A Bolt (2)
NAS1149D0416J Washer (4)
NAS1149F0363P Washer (4)
MS21083N4 Nut (4)
MS21044N3 Nut (4)
10C1-6019 Drawing

HOURS REQUIRED: 1 Hour

WARRANTY: Parts – All Aircraft; Labor – Aircraft Under Warranty

REV	DATE	ECO	DR	DESCRIPTION
A	1-19-06	20392	AJG	ADDED NOTE AND PART LIST, UPDATED TITLE BLOCK



PARTS LIST

ITEM	QTY	DESCRIPTION	PART NUMBER
10	1	WATER RUDDER STOP	21A08156-130
20	2	STOP - WATER RUDDER	21A08154-009
30	2	BOLT	AN4-7A
	2	WASHER	AN960-416L
	2	NUT	AN365-428
40	2	BOLT	AN3-7A
	2	WASHER	AN960-10
	2	NUT	AN365-1032

- NOTE:**
1. WHEN INSTALLING STOPS PER THIS DRAWING, CLOSE OFF LOOPS OF 21A08525-005 AIRCRAFT RUDDER HORN (BOTH SIDES). THIS IS SO SPRINGS DO NOT COME OFF DURING HIGH RUDDER DEFLECTIONS.
 2. DRILL OUT EXISTING (4) RIVETS NOTED. INSTALL PLATE STOP ON FLOAT CENTERLINE AND DOWN FROM TOP DECK AS NOTED. SECURE WITH AN470AD4 RIVETS (4).
 3. ATTACH TO EXISTING WATER RUDDER ARM AS SHOWN ON OUTBOARD SIDES. IF NECESSARY TRIM EDGE OF 21A08154-009 STOP SO WATER RUDDERS ARE PARALLEL TO CENTERLINE OF FLOAT IN UP POSITION.

WIPARE, INC.
 1700 HENRY AVE. SOUTH ST. PAUL, MN 55075
 (651) 451-1205

INST. - WATER RUDDER STOPS

TITLE: 10C1-6019

SCALE: 1:2

SIZE: C

SHEET: 1 of 1

REV: A

FINISH: BREAK ALL EDGES 0.03 ALL DIMENSIONS ARE AFTER FINISH

THIRD ANGLE PROJECTION

TOLERANCES: X ± .05, Y ± .015, Z ± .015