 <p style="text-align: center;"> <small>           • MANUFACTURERS OF WIPLINE FLOATS &amp; SKIS            • SPECIALISTS IN AIRCRAFT MODIFICATION            1700 Henry Avenue - Fleming Field            South St. Paul, MN 55075            651-451-1205         </small> </p>			Rev / Latest Rev. Date B/ 11-26-08
			Original Release 11-20-08
Prepared by Ellen Parker	Aircraft Make / Model	Float / Ski Model Wipline 10000 Amphibious Floats	Page 1  2
	Title 10000 float baggage floor repair		
<b>ALL INFORMATION IN THIS SERVICE DOCUMENT BASED ON FAA APPROVED DATA</b>			

## **SERVICE LETTER: 101**

**EFFECTIVITY:** All 10000 floats up to and including 10084A

**COMPLIANCE:** This Service Letter is to be complied with as needed based on the findings of regular inspections inside the baggage compartments. Later serial numbered floats should not encounter this problem as the reliefs in the floor and reinforced corners of the central panel as shown on page 2 were incorporated into production.

**BACKGROUND INFORMATION:** A few operators have experienced the baggage bulkheads cracking. After investigation it was determined this can happen because the baggage floor flexes under loads and puts pressure on the nearby bulkheads.

**METHOD OF COMPLIANCE:** If, after the regularly scheduled inspections, **damage is found** on the baggage bulkheads, operators may use **page 2** as instructions for the repair. This repair includes reinforcing the central panel with doublers (figures A & B) and cutting reliefs into the baggage compartment floor (figure C).

**If no damage** is found Wipaire recommends owner-operators cutting reliefs in the baggage floor as shown in **figure C, page 2 and installing Wipaire Service Kit 74.**

**SHOP HOURS REQUIRED:** Varies based on floats.

**WARRANTY:** Not Applicable

**COMPLIANCE:** Required if cracks are present in the bulkheads, optional if they are not.

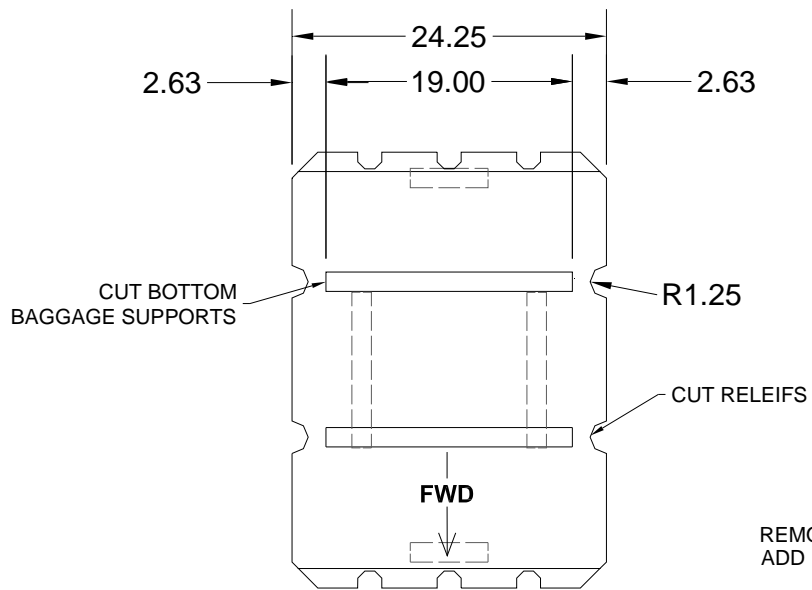
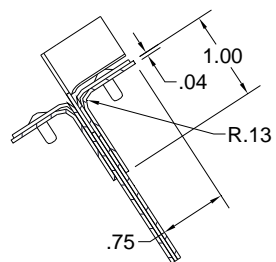


FIGURE C



SECTION A-A

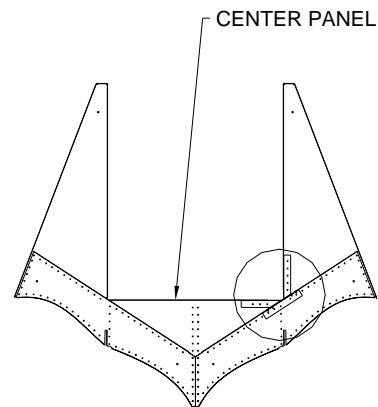


FIGURE A

REMOVE PORTION OF FLANGE IF CRACKED.  
ADD REINFORCEMENT DOUBLER.

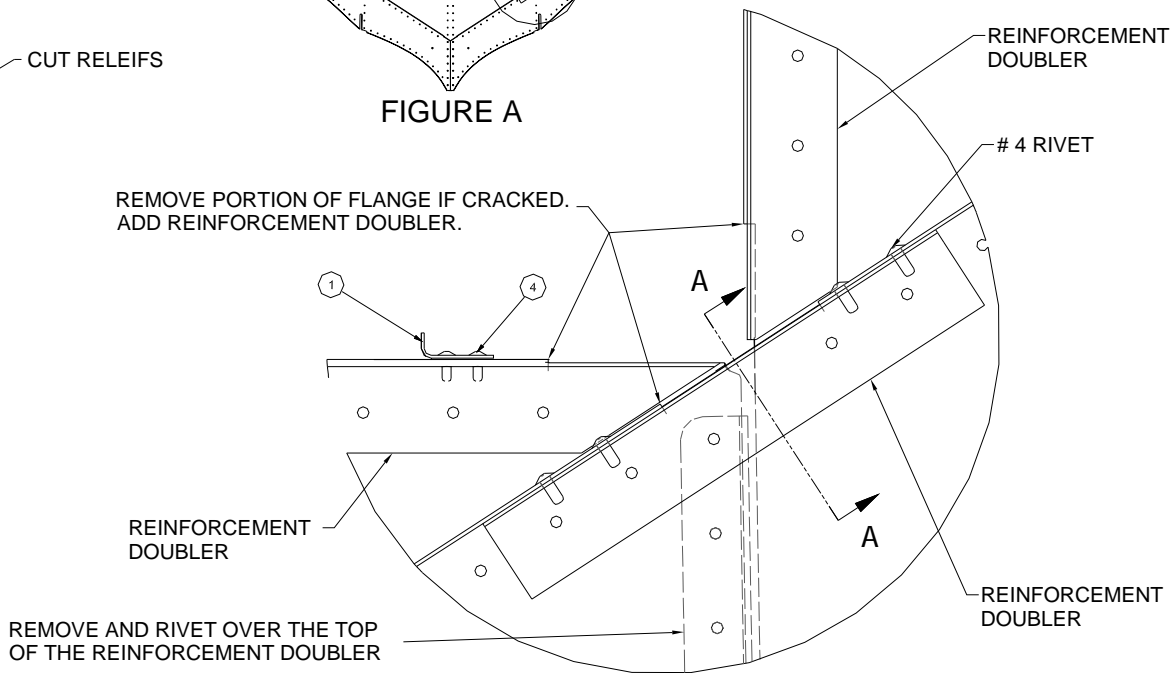


FIGURE B

NOTES:

1. USE ALUMINUM 6061-T6.
2. USE SEALANT BETWEEN ALL MATING PARTS.
3. LENGTH, SIZE, AND SHAPE OF REINFORCEMENT DOUBLERS MAY VARY DEPENDING ON SIZE OF DAMAGE.