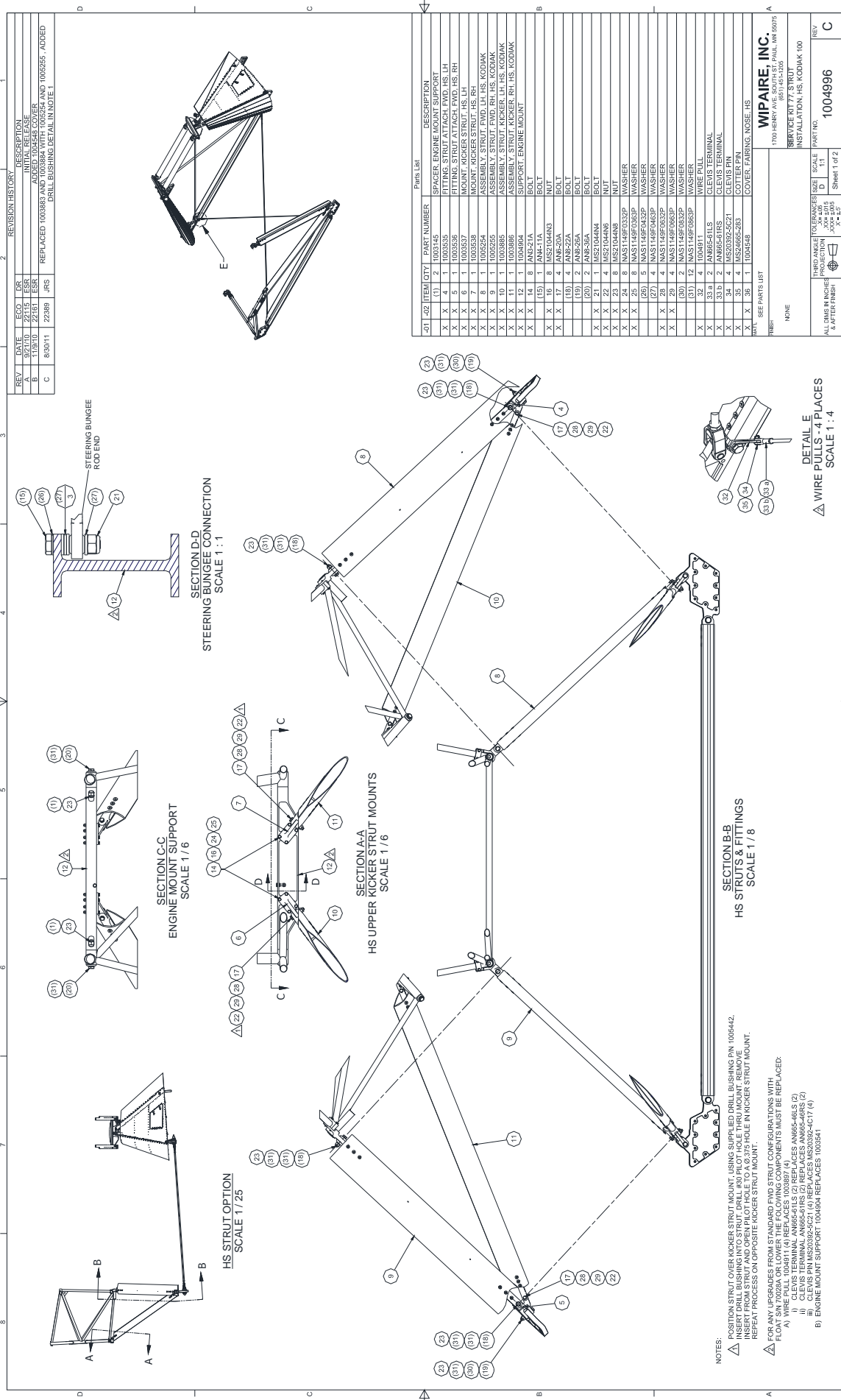
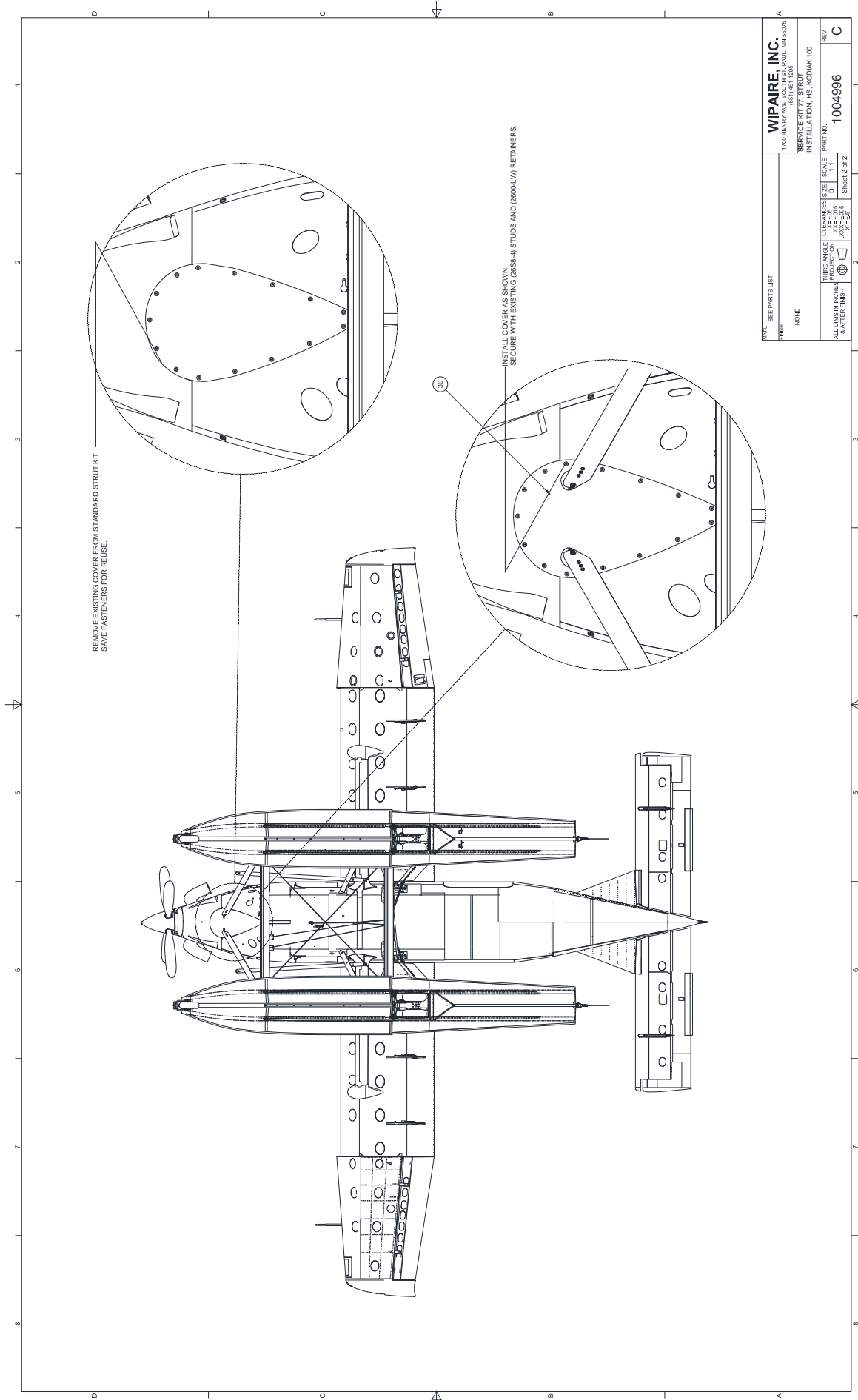
 <p style="text-align: center;"> <b>• MANUFACTURERS OF WIPLINE FLOATS &amp; SKIS</b>  <b>• SPECIALISTS IN AIRCRAFT MODIFICATION</b> </p> <p style="text-align: center;"> <small>1700 Henry Avenue - Fleming Field  South St. Paul, MN 55075  651-451-1205</small> </p>			Rev / Latest Rev. Date C / 8/30/11
			Original Release 9-1-10
Prepared by Kyle Taylor	Aircraft Make / Model Quest Kodiak	Float / Ski Model 7000 Amphibious floats	Page 1 <span style="float: right;">3</span>
Title Heavy seas strut package option			
<b>FAA APPROVAL HAS BEEN OBTAINED FOR TECHNICAL DATA IN THIS PUBLICATION THAT AFFECTS STC OR TSO DESIGN COMPLIANCE</b>			

## SERVICE KIT: 77

<b>EFFECTIVITY</b>	7000 floats, seaplane and amphibious, installed on Quest 100 Kodiak aircraft under Wipaire, Inc. STC SA02848CH: <b>Float S/N 70028A and lower, use kit 1004996-01</b> <b>Float S/N 70029A and higher, use kit 1004996-02</b>
<b>COMPLIANCE</b>	Optional for all seaplane and amphibious Wipaire, inc. float equipped Kodiak aircraft.
<b>BACKGROUND</b>	Additional bow struts have been approved as an option for the 7000 installation on the Kodiak. These struts supplement existing bow struts. The strut package with the supplemental bow struts is designated the “heavy seas” strut package. The supplemental struts help redistribute bow impact loads and reduce engine mount and firewall loads. The supplemental bow struts are referred to as “kicker struts.”
<b>COMPLIANCE METHOD</b>	See Wipaire, Inc. drawing number 1004996, Strut installation, HS, Kodiak 100. Specifically, <ul style="list-style-type: none"> <li>(a) Reconfigure the aircraft strut package using the parts and assembly methods defined on 1004996.</li> <li>(b) Install additional kicker struts and associated fittings and hardware as defined on 1004996.</li> <li>(c) When using the 1004996-01 kit, for floats S/N 70028A and lower: note 2 of 1004996 specifies hardware changes required to upgrade to the heavy seas configuration from an existing standard strut installation. Floats after S/N 70028A are equipped with the hardware specified in this note as part of the standard strut package.</li> </ul>
<b>SHOP HOURS</b>	Approximately 8 hrs for installation of HS strut package.
<b>WARRANTY</b>	None. This modification is optional, and may be retrofitted to an existing Kodiak seaplane or amphibian at the aircraft owner’s expense.
<b>NOTES</b>	None.





REMOVE EXISTING COVER FROM STANDARD STRUT KIT.  
SAVE FASTENERS FOR REUSE.

INSTALL COVER AS SHOWN.  
SECURE WITH EXISTING (2838-4) STUDS AND (2600LW) RETAINERS.

PART: SEE PARTS LIST		WIPARE, INC.	
FINISH: NONE		1700 HENRY AVE. SOUTH EAST PAUL, MN 55076	
THERM ANGLE PROJECTION: NONE		SERVICE KIT / STRUT	
TOLERANCES: UNLESS OTHERWISE SPECIFIED		INSTALLATION, HS. KODIAK 100	
SCALE: AS SHOWN	SCALE: 1:1	PART NO.	REV
AXES: A-D	AXES: 1-2	1004996	C
AXES: 3-5	AXES: 6-8	Sheet 2 of 2	