



WIPLINE FLOATS • SKIS • MODIFICATIONS • AIRCRAFT SALES
AVIONICS • INTERIOR • MAINTENANCE • PAINT REFINISHING

SERVICE LETTER 151

REPLACEMENT GROVE WHEEL

| | | | |
|---------------------------------|---|-----------------------------|----------------------|
| Aircraft Makes/Model(s): | Float Model(s): | Compliance: Optional | By: MAS |
| Reference Float Models | 2100A, 2350A, 3000A, 3450A, 3730A, 4000A | Part Number: 1006761 | Approved: DRH |
| | | Date: 4/1/2026 | Revision: C |

LOG OF REVISIONS

| Revision | Description | Date |
|----------|---|-----------|
| A | Initial release | 9/2/2013 |
| B | Document format update, added 3730A and 4000A model floats | 3/18/2019 |
| C | Changed Bolt 3A06702-002 to 1005927 and updated step 9 in Installing Grove Wheel section. | 4/1/2026 |

FAA approval has been obtained for technical data in this publication that affects STC or TSO design compliance

EFFECTIVITY:

This service letter applies to the following float serial numbers:

| | |
|-------|-----------------|
| 2100A | 21826 and prior |
| 2350A | 23148 and prior |
| 3000A | 30238 and prior |
| 3450A | 34280 and prior |
| 3730A | ALL |
| 4000A | ALL |

COMPLIANCE:

Optional Compliance.

BACKGROUND:

Wipaire has changed the nose wheel assembly in the floats listed above from a Parker to Grove wheel.

COMPLIANCE METHOD:

Replace nose wheel in accordance per the Work Instruction section of this service letter.

APPROXIMATE SHOP HOURS:

Installing the Grove wheel will take approximately 2-4 hours per float set.

WARRANTY INFORMATION:

This service letter does not include warranty for labor and parts.

TECHNICAL DATA:

Copies of this service letter, associated service kit (if applicable), float service manual, and float parts manual are available at www.wipaire.com

1700 Henry Ave - Fleming Field (KSGS), South St. Paul, MN 55075

Phone: 651.451.1205 | Fax: 651.457.7858

www.wipaire.com



ITEMS PROVIDED IN SERVICE KIT 1006761-01 (2100A, 2350A)

| ITEM | QTY | PART NUMBER | DESCRIPTION |
|------|-----|-------------|--------------------------------------|
| 1 | 1 | 49-12AF-001 | WHEEL |
| 2 | 2 | 1005929 | NOSE GEAR AXLE SPACER (2100A, 2350A) |
| 3 | 1 | 1005927 | NOSE GEAR AXLE BOLT |
| 4 | 2 | MS28775-029 | O-RING |

ITEMS PROVIDED IN SERVICE KIT 1006761-02 (3000A, 3450A, 3730A, 4000A)

| ITEM | QTY | PART NUMBER | DESCRIPTION |
|------|-----|-------------|--|
| 1 | 1 | 49-12AF-001 | WHEEL |
| 2 | 2 | 1005928 | NOSE GEAR AXLE SPACER (3000A, 3450A, 3730A, 4000A) |
| 3 | 1 | 1005927 | NOSE GEAR AXLE BOLT |
| 4 | 2 | MS28775-029 | O-RING |

WORK INSTRUCTION

NOTE: Reference the following figures as reference when completing this service letter:

- Figure 1: 2100A, 2350 Parker Assembly
- Figure 2: 2100A, 2350 Grove Assembly
- Figure 3: 3000, 3730, 3450, 4000 Parker Assembly
- Figure 4: 3000, 3730, 3450, 4000 Grove Assembly

REMOVING PARKER WHEEL

1. Jack aircraft and place on stands.
2. Pull gear select and gear pump circuit breaker.
3. By holding the 3A06702-002 axle bolt head in place and rotate ONLY the MS21083N8 nut off the 3A06702-002 axle bolt.
4. Pull out the 3A06702-002 axle bolt and remove nose wheel assembly from the nose gear fork.

NOTE: Anti rotation pin is used to prevent bolt from rotating. Spinning the bolt head will break anti rotation pin.

5. Remove air from tire and break loose tire beads.

WARNING!

Serious injury can result from attempting to separate wheel halves while tire and tube are still inflated.

6. Remove AN thru-bolts and associated washers and nuts that hold the wheel halves together.
7. Split wheel halves and remove tire and tube.
8. Discard wheel halves, spacers, and 068-30373 gasket.
9. Inspect tire and tube and replace if needed.

INSTALLING GROVE WHEEL

1. Remove AN thru-bolts and associated washers and nuts from Grove wheel assembly.

NOTE: Grove wheel assembly bearings come pre-greased with BG Special HCF Grease part number 605. If desired, remove all existing grease in wheel assembly. Repack bearings with desired grease and reassemble.

2. Remove and replace the O-rings that are attached to the 010-019 nose wheel grease retainer.
3. Insert tube in tire, aligning index marks on tire and tube.
4. Place wheel half with the valve stem hole into tire.
5. Place other wheel half into other side of tire with 010-019 nose wheel grease retainer and attached O-rings between wheel halves. Ensure tube and nose wheel grease retainer is not pinched between wheel halves before torquing hardware.
6. Insert AN thru-bolts and associated washers and nuts and torque to specifications provided by wheel manufacturer.
7. Place the wheel and tire in an inflation cage and inflate tire to seat tire beads, then inflate or deflate to specifications provided the applicable float service manual.
8. Assemble nose wheel assembly to the nose gear fork by inserting the 1005927 bolt.
9. Hold 1005927 bolt head in place and rotate **ONLY** the MS21083N8 nut until wheel spins 1-2 rotations when spun by hand with firm force.
10. Grease the 10095K41 grease zerk until entire bearing cavity is full and a steady stream of grease is exiting the vent hole in the opposite end of the axle bolt.
11. Push in gear select and gear pump circuit breaker.
12. Remove aircraft jacks.
13. Upon completion of inspection, enter information in Aircraft Logbook for completion of Wipaire Service Letter 151.

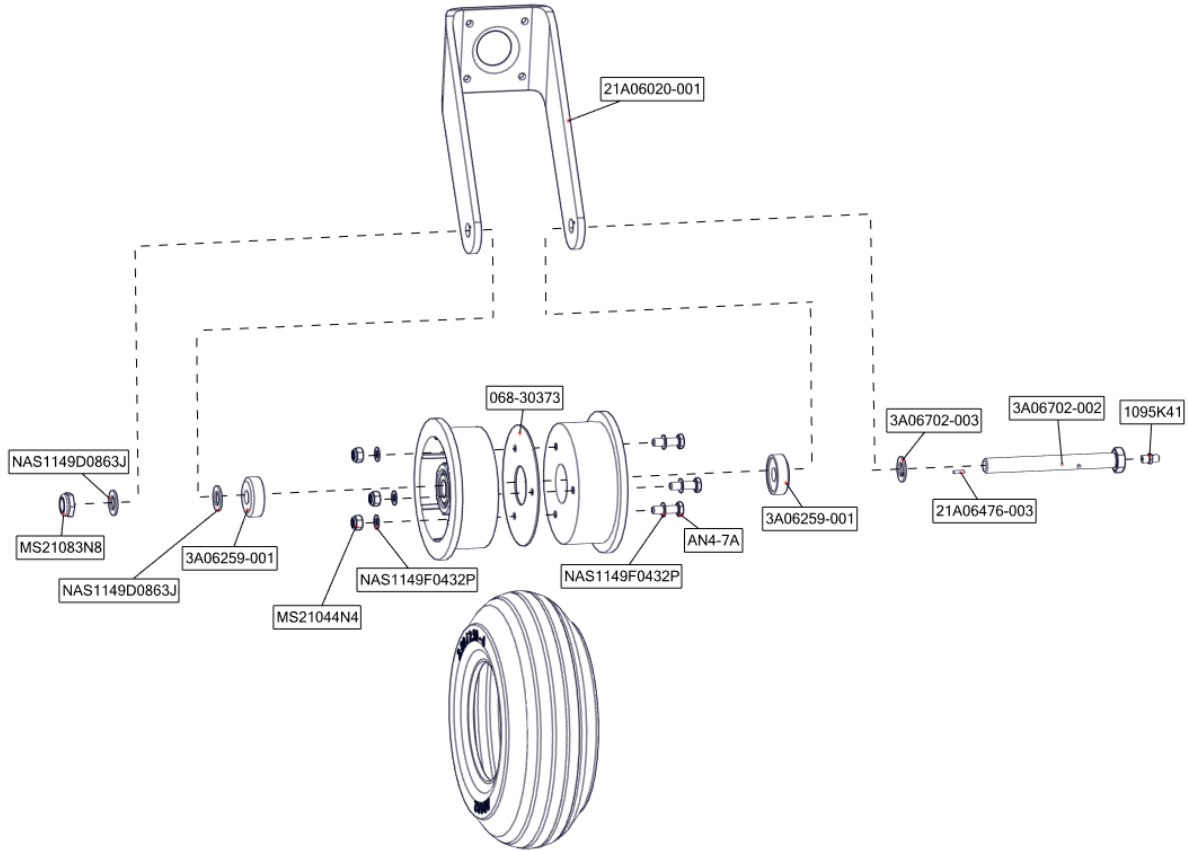


FIGURE 1: 2100, 2350 PARKER ASSEMBLY

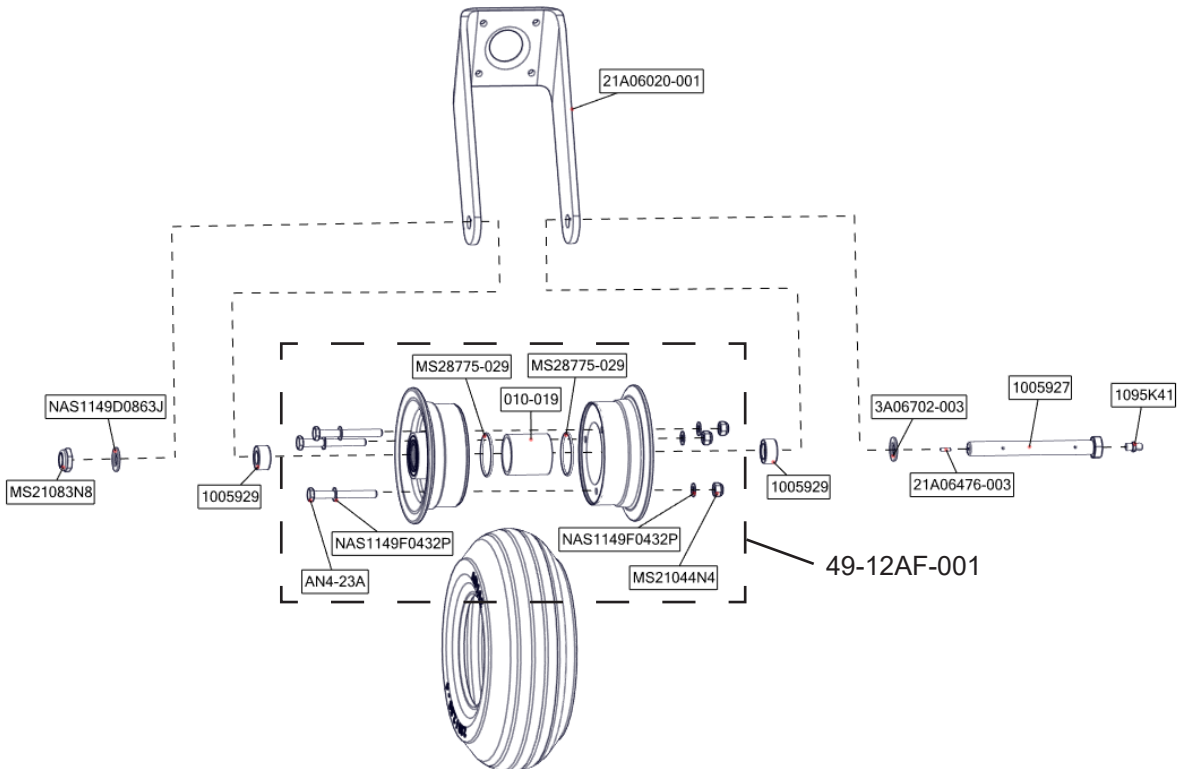


FIGURE 2: 2100, 2350 GROVE ASSEMBLY

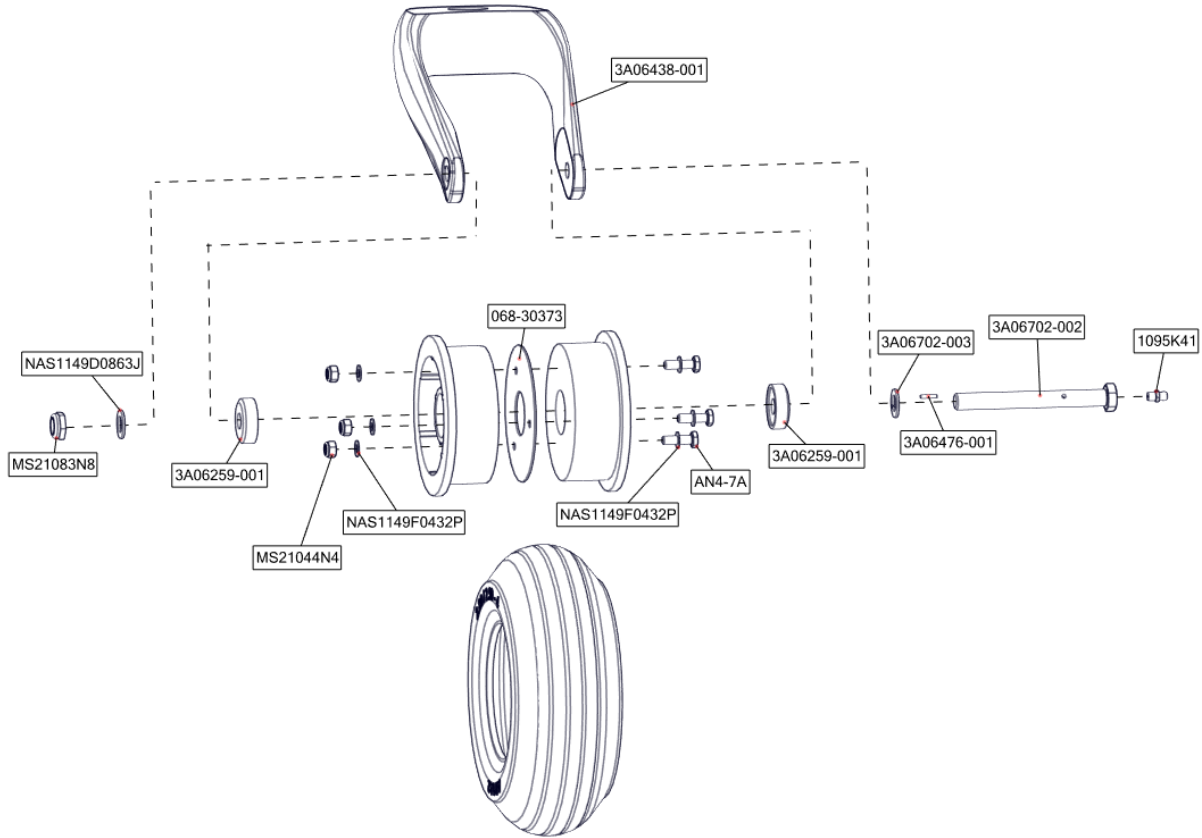


FIGURE 3: 3000, 3730, 3450, 4000 PARKER ASSEMBLY

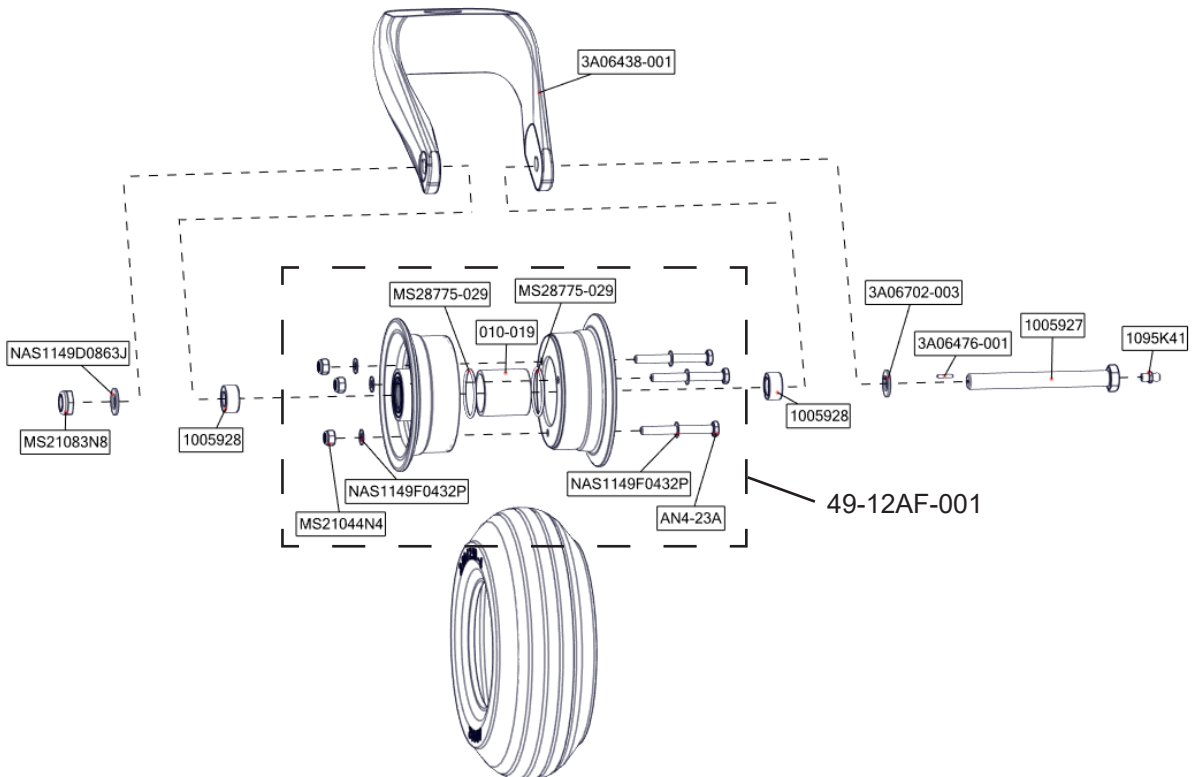


FIGURE 4: 3000, 3730, 3450, 4000 GROVE ASSEMBLY