

WIPAIRE, INC.  
SOUTH ST. PAUL, MN

**Service Kit:** #20

**Revision:** A

**Date:** October 11, 2023

**Subject:** Conversion of Model 8000 Hull (Cessna 208) to Model 8000 (DHC-3) Hull

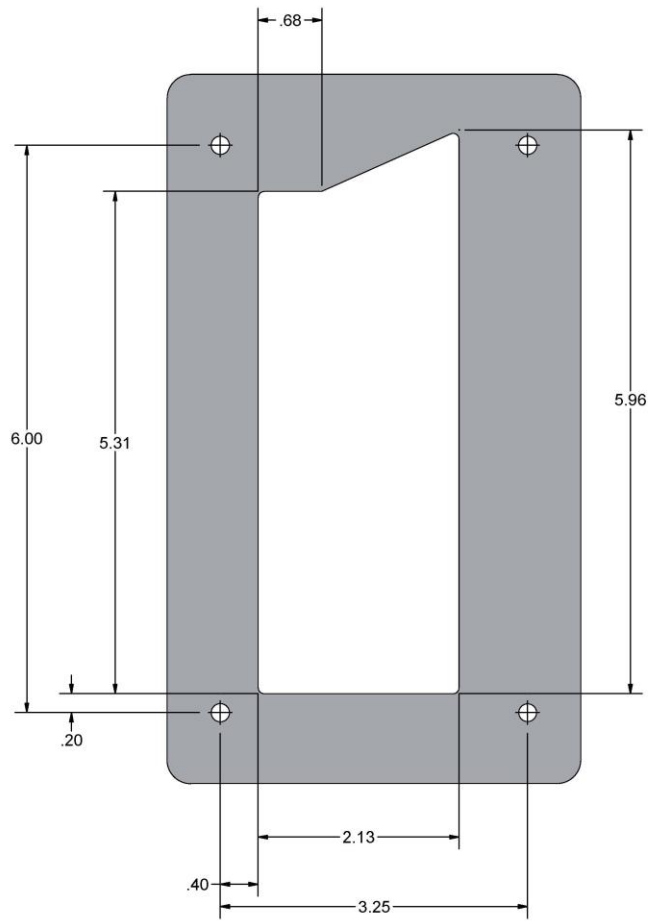
**Float Models:** Wipline Model 8000 float hulls.

**Associated Service Letter:** #35

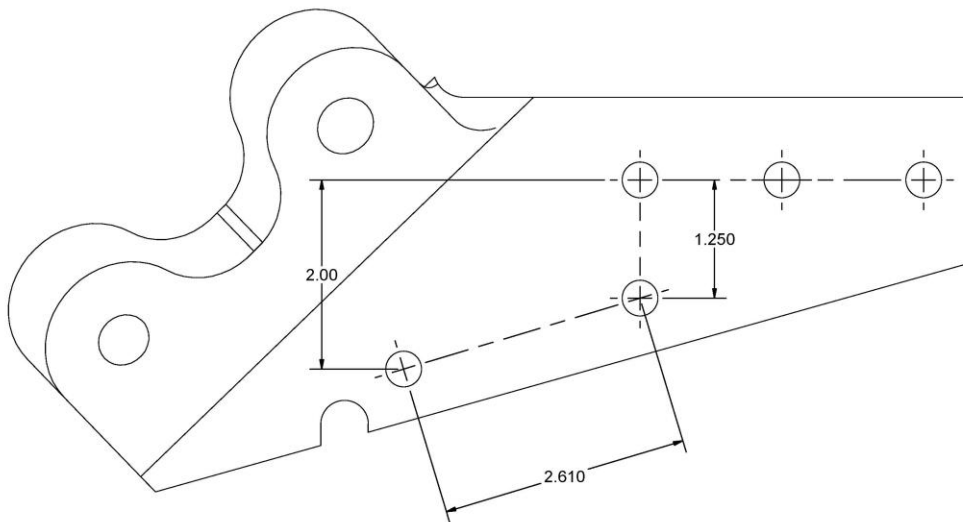
Item	Qty Per Float	Part Number	Description
1	1	9A01001-045	SUPPORT, FRONT DECK FITTING, STRUT
2	1	9A01001-046	SUPPORT, FRONT DECK FITTING, STRUT
3	2	9A02111-001	FITTING, FRONT STRUT, FLOAT
4	1	9A02113-001	FITTING, FLOAT, REAR STRUT, LH
5	1	9A02113-002	FITTING, FLOAT, REAR STRUT, RH
6	2	9A02163-059	SPACER
7	2	9A02218-001	COVER, STRUT
8	2	9A03163-060	SPACER COVER, SPREADER BAR AFT
9	2	9A03197-010	COVER, SPREADER BAR AFT
10	1	9A08000-111	CABLE ASSY. RETRACT LEFT
11	1	9A08000-112	CABLE ASSY. RETRACT RIGHT
12	1	9A08000-113	CABLE ASSY. STEERING LEFT
13	1	9A08000-114	CABLE ASSY. STEERING RIGHT
14	2	9A08000-122	CABLE ASSY. BALANCE
15	4	AN6-24A	BOLT, 3/8-24, 1.9375 GRIP, UNDRILLED, STEEL
16	4	MS21044N6	NUT, LOCKING, REGULAR HEIGHT, 3/8-24 UNF
17	8	NAS1149F0663P	WASHER, 0.39 ID, 0.063 THK, STEEL

**NOTES:**

1. Structural float hull modifications are detailed on the following pages.
2. Alternate lengths of water rudder steering/balance/retract cables are provided in kit (reference Wipaire drawing 9D1-5504).
3. Electrical wire extensions for gear selector may be required to be fabricated and cut to fit individual length as needed (reference Wipaire drawing 9D1-5507):
  - a. Using M22759/16 20 AWG wire, or equivalent:
    - i. Cut to length (4 equal) for GE1 through GE4 and mark both ends of each wire.
    - ii. Cut to length (4 equal) for GE5 through GE8 and mark both ends of each wire.
  - b. Bundle each of the two sets of wires using M23053/5 heat shrink, or equivalent, leaving ~6" of wires exposed at both ends.

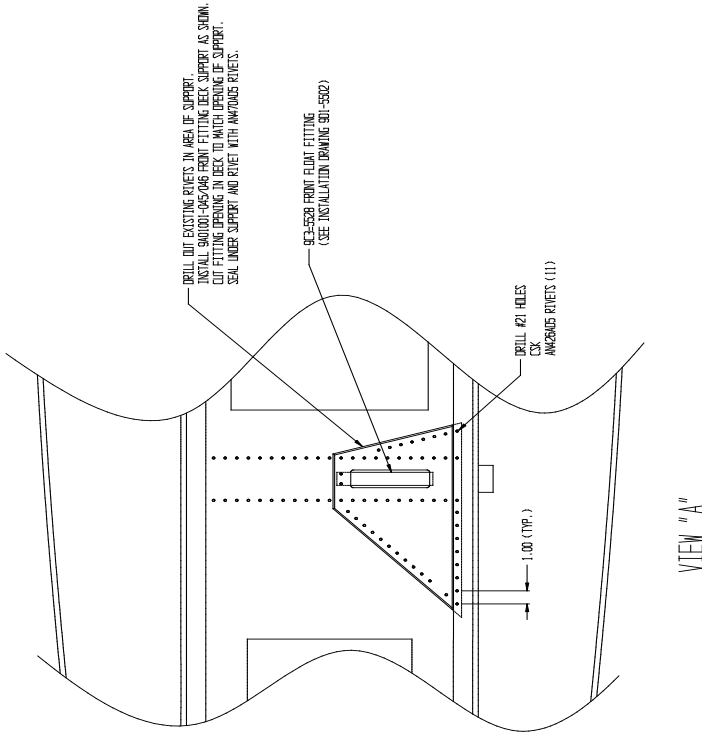
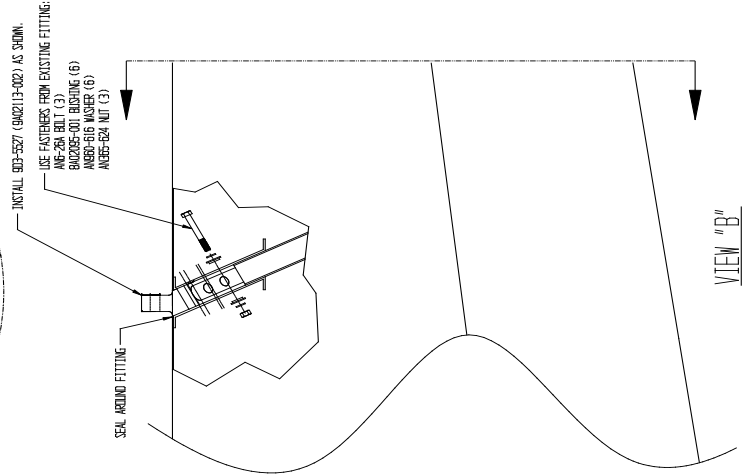
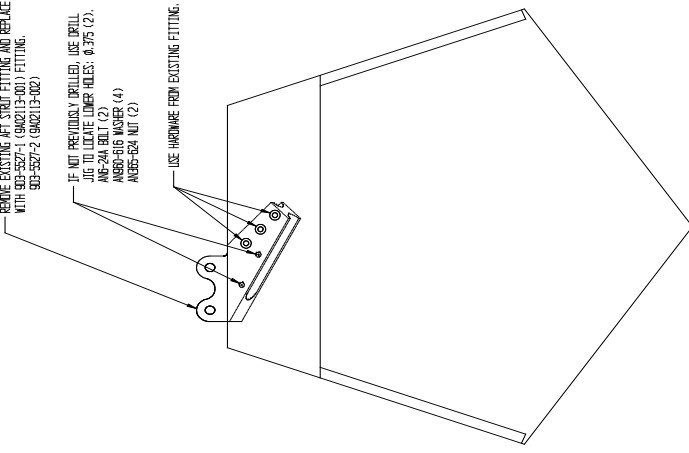
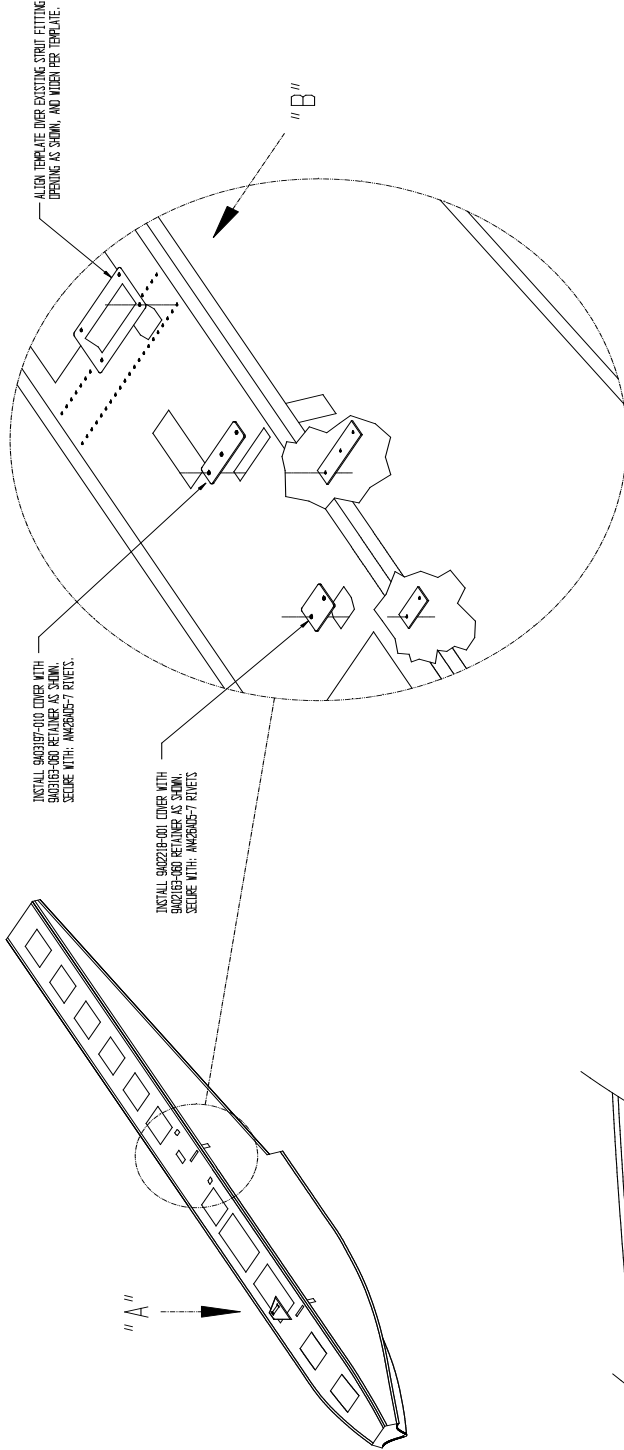


**TOP DECK TEMPLATE**  
 SEE DETAIL ON FOLLOWING PAGE  
 (FLIP FOR OPPOSITE FLOAT)



**AFT FITTING - RELATIVE LOCATIONS OF ADDED HOLES**  
 SEE DETAIL ON FOLLOWING PAGE

REV	DESCRIPTION	DATE	APP'D.



FINISH		TOLERANCES	
NAME	DATE	DATE	TOLERANCES
DR	NO.	NO.	NO.
APP'D.	J.L.	B.07/98	.00 ±.05
		B.07/98	.00 ±.05

WIP'L	8520 RIVER ROAD, INNER GROVE HEIGHTS, MN. 55076
FINISH	8520 RIVER ROAD, INNER GROVE HEIGHTS, MN. 55076
TITLE	CONVERSION, HULL S/K #20
PROJ. NO.	SCALE
	NO. 901-5511
	DATE
	REV