



WIPLINE FLOATS • SKIS • MODIFICATIONS • AIRCRAFT SALES
AVIONICS • INTERIOR • MAINTENANCE • PAINT REFINISHING

SERVICE LETTER 187

10000 ANCHOR CHANNEL INSTALLATION

| | | | |
|---------------------------------|------------------------|-----------------------------|----------------------|
| Aircraft Makes/Model(s): | Float Model(s): | Compliance: Optional | By: MAB |
| AT-802 AT-802A | 10000A | Part Number: 1009888 | Approved: SDW |
| | | Date: 2/14/2019 | Revision: C |

LOG OF REVISIONS

| Revision | Description | Date |
|----------|--|------------|
| A | Initial release | 9/4/2018 |
| B | Added baggage floor bulkhead attach hardware | 10/26/2018 |
| C | Added anchor reference | 2/14/2019 |

FAA approval has been obtained for technical data in this publication that affects STC or TSO design compliance

EFFECTIVITY:

This service letter applies to Air Tractor models AT802 and AT802A with Wipline 10000A Fireboss Amphibious installed per STC SA01795CH

COMPLIANCE:

Optional compliance

BACKGROUND:

An optional channel has been designed to install in the baggage compartment for an anchor to be mounted to

COMPLIANCE METHOD:

Install provided parts as shown in the Work Instruction section of this service letter

APPROXIMATE SHOP HOURS:

Installing the anchor mount will take approximately 1 labor hour to install per per float set. Add 1 hour if an existing foam tank needs to be removed

WARRANTY INFORMATION:

This service letter does not include warranty for labor and parts

TECHNICAL DATA:

Copies of this service letter, associated service kit (if applicable), float service manual, and float parts manual are available at www.wipaire.com

The anchor channel is designed to fit a folding anchor similar to 318018 an 18 lb folding anchor from www.seadog.com (Anchor not provided with kit)

1700 Henry Ave - Fleming Field (KSGS), South St. Paul, MN 55075

Phone: 651.451.1205 | Fax: 651.457.7858

www.wipaire.com

CONTENTS

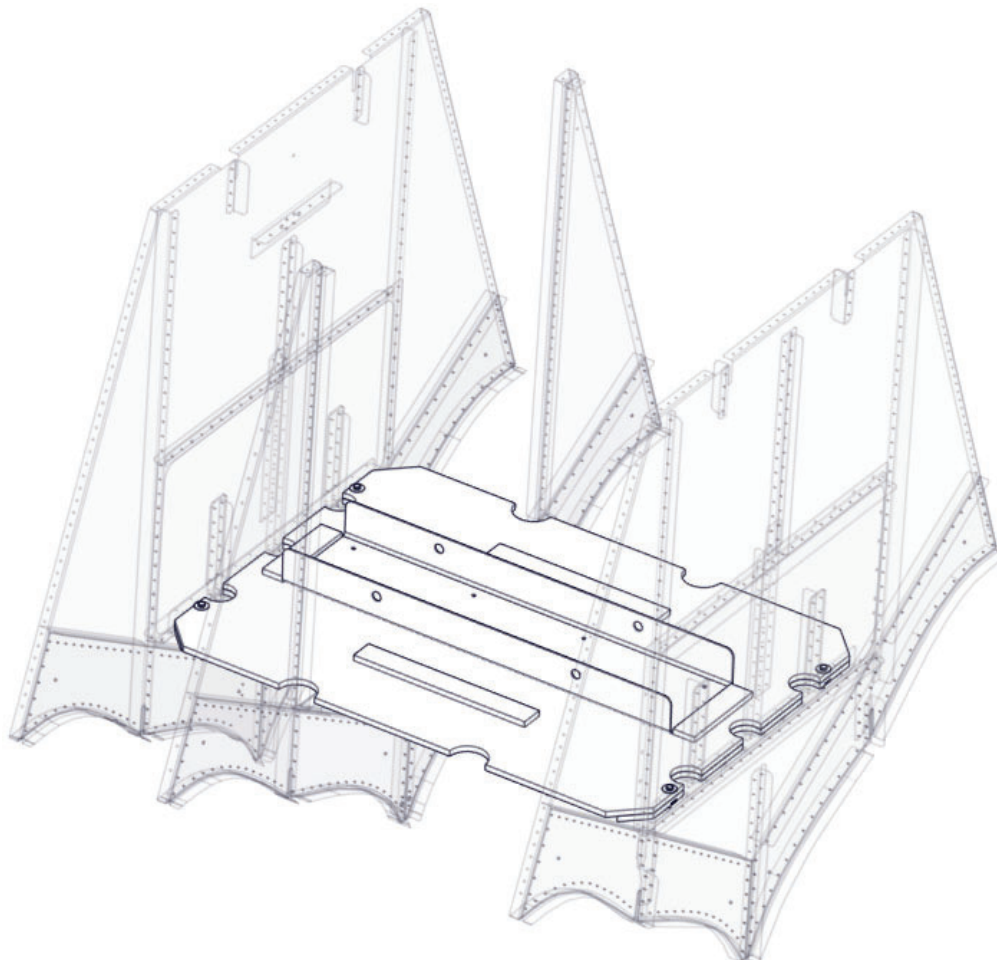
WORK INSTRUCTION..... 2
AIRCRAFT CLOSING AND RETURN TO SERVICE 3

ITEMS PROVIDED IN SERVICE KIT 1009888-01 (1 SET OF FLOATS)

| ITEM | QTY | PART NUMBER | DESCRIPTION |
|------|-----|---------------|----------------------------|
| 1 | 1 | 1009883 | ANCHOR CHANNEL |
| 2 | 8 | AN4-10A | BOLT |
| 3 | 8 | AN970-4 | LARGE AREA WASHER |
| 4 | 8 | NAS1149F0463P | WASHER |
| 5 | 8 | MS21044N4 | NUT |
| 6 | 4 | AN3-12A | BOLT (use if required) |
| 7 | 4 | AN970-3 | WASHER (use if required) |
| 8 | 4 | CN130120 | CLIP NUT (use if required) |

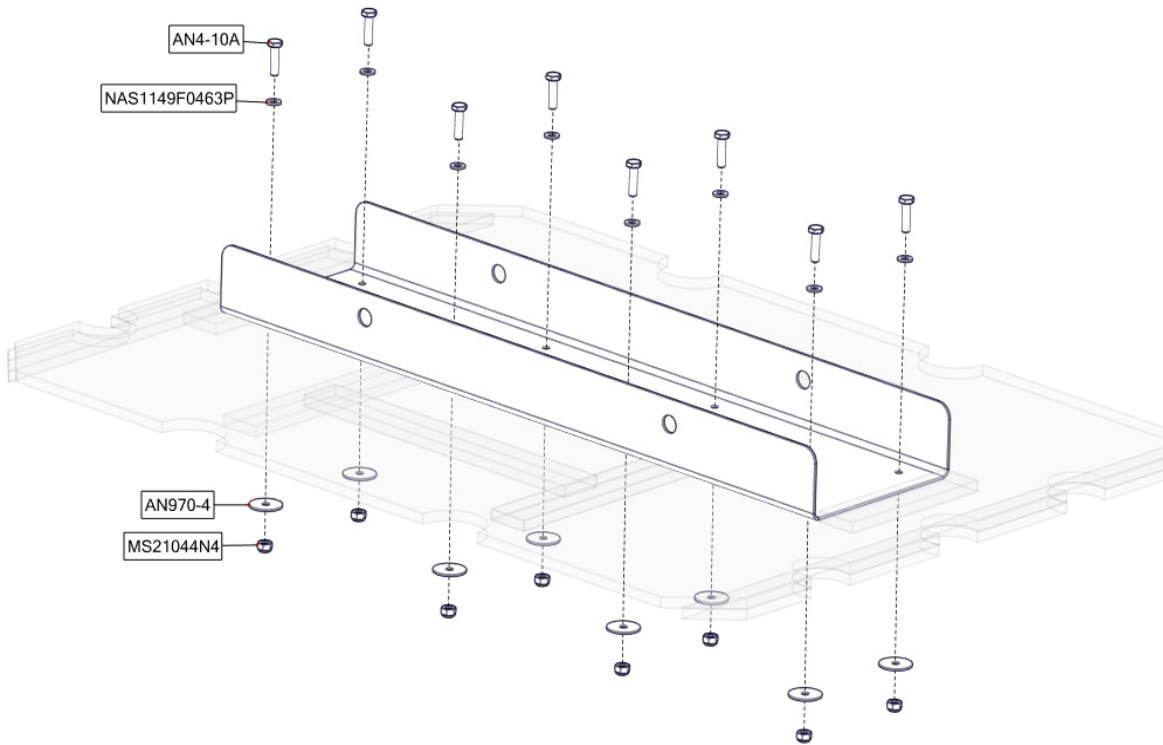
WORK INSTRUCTION

1. Determine which baggage compartment will be used to store anchor and remove foam tank if applicable
2. Open float baggage compartment and center 1009883 anchor channel on baggage floor panel



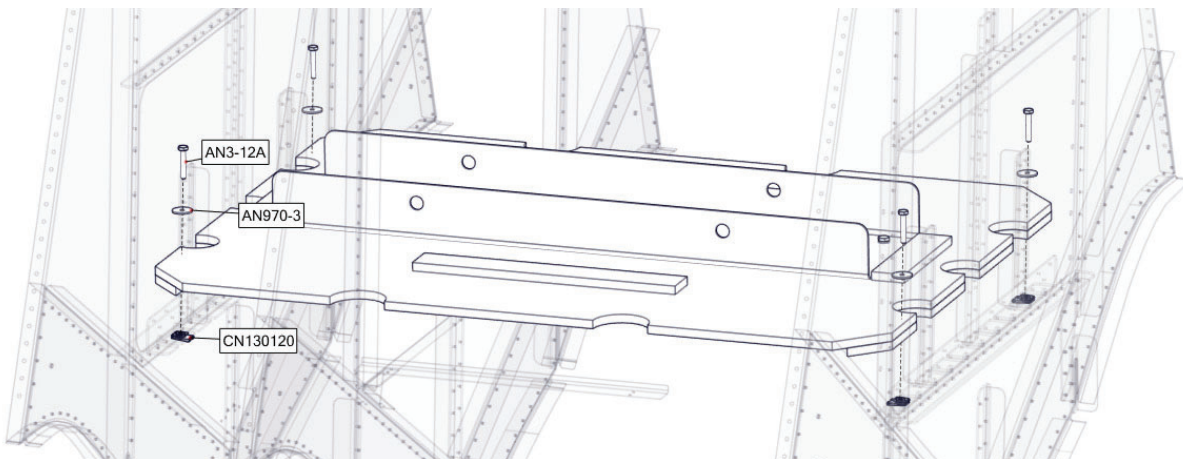
3. Back drill 1/4" mounting holes into existing baggage floor panel through 1009883 anchor channel and install hardware shown

NOTE: Baggage floor panel may be removed if preferred to install 1009883 anchor channel



4. If previously removed, reinstall baggage floor panel with attached 1009883 anchor channel and verify the baggage floor panel is securely attached to the forward and aft bulkheads

NOTE: If floor panels were not previously secured to bulkheads, install supplied AN3-12A bolt, AN970-3 washer, and CN130120 clip nuts



5. Use short ratchet straps to secure the anchor in the 1009883 anchor channel

AIRCRAFT CLOSING AND RETURN TO SERVICE

1. Close and secure baggage compartment covers
2. Upon completion of inspection, enter information in Aircraft Logbook for completion of this Wipaire service letter
3. Visit www.wipaire.com and update your aircraft service letter/kit record using the link found on the Customer Support dropdown menu under "Update Service Letter & Kit Compliance Status"

ANCHOR EXAMPLES

