



WIPLINE FLOATS • SKIS • MODIFICATIONS • AIRCRAFT SALES
AVIONICS • INTERIOR • MAINTENANCE • PAINT REFINISHING

SERVICE LETTER 227

10000A Floats Inline Filters Replacement

Aircraft Makes/Model(s):	Float Model(s):	Compliance: Optional	By: MAB
Air Tractor AT-802 & AT-802A	10000A	Part Number: 1011841	Approved: DRH
		Date: 11/28/2022	Revision: B

LOG OF REVISIONS

Revision	Description	Date
A	Initial release	4/23/2021
B	Full re-write	11/28/2022

FAA approval has been obtained for technical data in this publication that affects STC or TSO design compliance.

EFFECTIVITY:

This service letter applies to Air Tractor models AT-802 & AT-802A with Wipline 10000 Amphibian Floats installed per STC SA01795CH which contain uni-directional inline filters between the scoop cylinders and the directional valve. Refer to Figure 1 to assess applicability.

COMPLIANCE:

Optional compliance

BACKGROUND:

When hydraulic fluid is returned from the scoop cylinders, it is causing the filter element to chatter against the internal o-ring. The o-ring can fail causing small pieces of o-ring to flow out of the inline filter and into the directional valve. This service letter provides installation instructions to replace the two inline filters from the scoops to the directional valve with bi-directional inline filters.

COMPLIANCE METHOD:

Install provided parts as shown in the Work Instruction section of this service letter.

APPROXIMATE SHOP HOURS:

The work instruction for this service letter will take approximately 3 labor hours.

WARRANTY INFORMATION:

This service letter does not include warranty for labor and parts.

TECHNICAL DATA:

Copies of this service letter, associated service kit (if applicable), float service manual, and float parts manual are available at www.wipaire.com.

1700 Henry Ave - Fleming Field (KSGS), South St. Paul, MN 55075

Phone: 651.451.1205 | Fax: 651.457.7858

www.wipaire.com

ITEMS PROVIDED IN SERVICE KIT 1011841-01

ITEM	QTY	PART NUMBER	DESCRIPTION
1	2	1002822	TUBE ASSY-HYDRAULIC SYSTEM, AT-802
2	2	AN526-1032R12	SCREW, MACHINE, TRUSS HEAD
3	2	AN816-6-6D	NIPPLE, FLARED TUBE AND PIPE THREAD
4	2	AN912-3D	BUSHING, REDUCER
5	2	HPF-50-Q-6-S	FILTER, INLINE, BI-DIRECTIONAL
6	2	MS20826-5D	FITTING, TEE
7	2	MS21044N3	NUT, LOCKING, REGULAR HEIGHT, 10-32 UNF
8	2	MS21919WDG23	CLAMP, 1.438 ID, ALU.
9	4	NAS1149D0363J	WASHER, 0.203 ID, 0.063 THK, ALUMINUM

ONE SIDE SHOWN EXPLODED,
BOTH SIDES ARE TO BE REPLACED

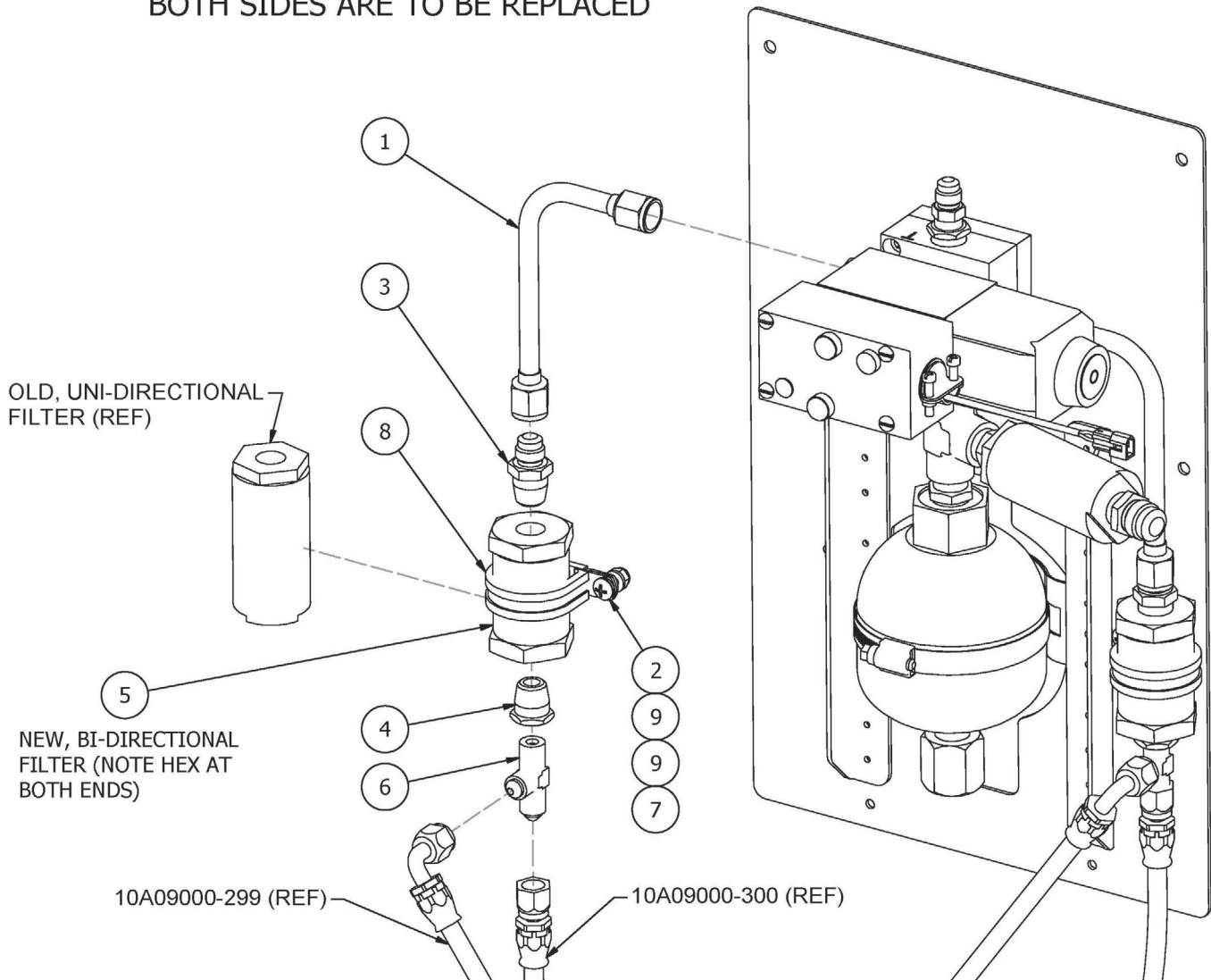


FIGURE 1 - INLINE FILTERS AT ACCUMULATOR ASSEMBLY

Work Instruction

1. Position and prepare aircraft for safe maintenance.
2. Jack aircraft per Wipaire Service Manual.
3. Pull float pump 1 and pump 2 circuit breakers.
4. Relieve pressure in the hydraulic system by cycling gear position selector.
5. Remove access panels as needed to access hydraulic pump.

(REFER TO FIGURE 1 FOR STEPS 6-13. FIGURE 2 PROVIDES A SCHEMATIC REPRESENTATION.)

6. Remove 10A09000-299 and 10A09000-300 scoop hydraulic lines from MS20826-5D tee fittings (item 6).
7. Remove adel clamps (item 8) which hold the inline filters to the accumulator mount assembly by removing associated hardware (items 2, 9, 9, 7).
8. Disconnect the hard hydraulic lines (item 1) from inline filters and from directional valve, ports "A" and "B."
9. Install new fittings (items 3, 4, 6) into new bi-directional inline filters (item 5) per image. Use thread sealant with all pipe threads.
10. Install new hard hydraulic lines (item 1) onto new filter fittings (item 3). **Note:** Item 1 has been revised and may be longer than those previously installed.
11. Install other end of new hydraulic hard line assemblies (item 1) onto directional valve manifold fittings, ports "A" and "B."
12. Secure new bi-directional inline filters to accumulator mount with new adel clamps (item 8) and new hardware (items 2, 9, 9, 7).
13. Reinstall hydraulic lines 10A09000-299 and 10A09000-300 onto tee fittings (item 6).
14. Ensure gear selector handle is in the appropriate position, and re-engage pump 1 and pump 2 circuit breakers.
15. Perform a retraction/extension test on both the gear and scoops to make sure system is functioning correctly and is properly bled of air. Reference Wipaire Service Manual, P/N 1002545 (AT-802A) or P/N 1003546 (AT-802) - Chapter 4 Scoop System Operation, Removal, and Service.
16. Service hydraulic pump reservoir with MIL-H-5606 hydraulic fluid as needed.
17. Leak check all affected hydraulic connections and lines.
18. Remove aircraft from jack stands per Wipaire Service Manual.
19. Reinstall all removed access panels.

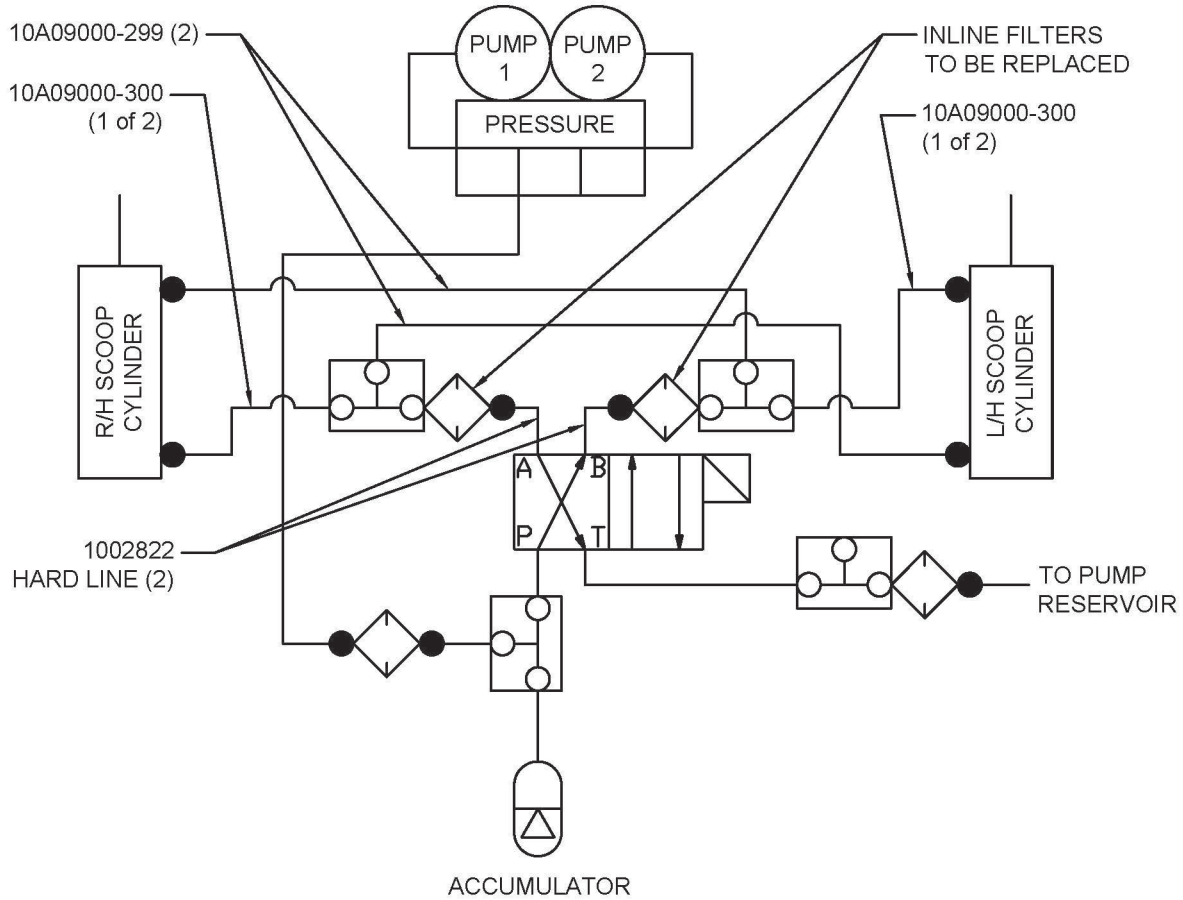


FIGURE 2 - HYDRAULIC SCOOP SCHEMATIC

Aircraft Closing & Return to Service

1. Upon completion of inspection, enter information in Aircraft Logbook for completion of Wipaire Service Letter 227.