



WIPLINE FLOATS | MODIFICATIONS | AIRCRAFT SALES
AVIONICS | INTERIORS | MAINTENANCE | PAINT

SERVICE LETTER 274

3000/3450 Rotary Actuator Shaft Key Retainer

Aircraft Makes/Model(s):	Float Model(s):	Compliance: Mandatory	By: MAS
Textron Aviation 180, 182, 185, 206 Maule M-6-235, M-7-260, M-7-260C, MT-7-260, M-7-235, M-7-235B, M-7-235C, MT-7-235, M-7-420A, M-7-420AC, MX-7-235, MT-7-420	3000A 3450A	Part Number: 1012879 Date: 1/15/2026	Approved: DRH Revision: B

LOG OF REVISIONS

Revision	Description	Date
A	Initial release	7/9/2025
B	Added Maule models MX-7-235 and MT-7-420, updated Effectivity and Warranty sections.	1/15/2026

FAA approval has been obtained for technical data in this publication that affects STC or TSO design compliance.

EFFECTIVITY:

All Wipline model 3000 and 3450 amphibian floats with rotary-style main gear actuators. This style of actuator entered production in 2012 and is covered by two assembly part numbers: 1005271 and 1012500. Supplemental Type Certificated and known Type Certificated applications are provided above. Being a TSO article, it is possible this list is not comprehensive.

COMPLIANCE:

Compliance is Mandatory.

BACKGROUND:

The central rotating shaft within these rotary actuators is splined into landing gear linkage with a square key. The tolerances of these parts are such that it is possible for the key to slip from the keyway, perhaps disengaging the actuator from the linkage and/or damaging nearby components. To remedy this, a retainer entered production in 2025 with float serial numbers:

- 30315A/30316A and later (3000 floats)
- 34293A/34294A; 34309A/34310A; 34317A/34318A and later (3450 floats)

This service letter provides instructions to retrofit this part.

COMPLIANCE METHOD:

Determine presence or absence of retainer and, if absent, install in accordance with the Work Instructions section of this service letter.

APPROXIMATE SHOP HOURS:

The work instruction will take approximately 4 labor hours per float set.

WARRANTY INFORMATION:

This service letter includes warranty for parts if ordered within two years of the Revision B release date of Service Letter 274.

TECHNICAL DATA:

Copies of this service letter, associated service kit (if applicable), float service manual, and float parts manual are available at www.wipaire.com.

PARTS LIST (PER AIRCRAFT, ORDER INDIVIDUALLY AS NEEDED)			
ITEM	QTY	PART NUMBER	DESCRIPTION
1	2	1012868	RETAINER, ACTUATOR, MAIN GEAR, 3000/3450
2	2	NAS1149F0632P	WASHER, 0.39 ID, 0.032 THK, STEEL
3	2	MS21083N6	NUT, LOCKING, LOW HEIGHT, 3/8-24 UNF
4	2	MS21044N4	NUT, LOCKING, REGULAR HEIGHT, 1/4-28 UNF

Work Instructions

1. Position and prepare aircraft for safe maintenance. This retrofit may be performed with gear in full down/locked position, without the need to jack aircraft, except for the functional check (final step).
2. Relieve hydraulic pressure: with power OFF and landing gear motor circuit breaker PULLED, move emergency hand pump selector to UP, then DOWN, then NEUTRAL position.
Note: Refer to Figures 1 and 2 for steps 3-9.
3. Remove gear indicator cover (yellow) from float top deck.
4. Unfasten two bolts through actuator arm. Arm may remain in place on actuator shaft, unless removal would help facilitate steps 5-7.
5. Check condition of key within keyway: Inspect for damage including, but not limited to missing material such as worn edges or ends, corrosion, and deformation (bending, twisting) that could affect its ability to properly engage. Reference part number: MS20066-183.
6. Check condition of rod end linkage and neighboring components: Inspect for general wear or deformation - perhaps resulting from contact with key.
7. Position retainer (item 1) as shown.
8. Re-fasten arm, retainer, and rod end with existing hardware, except for:
 - a. 0.032"-thick washer (item 2) in place of previously installed 0.063"-thick washer at location shown.
 - b. New locknuts (items 3, 4).
9. Re-install gear indicator cover.
10. Repeat steps 3-9 for opposite float.
11. Reset landing gear motor circuit breaker.
12. With aircraft on jacks, perform a gear retraction/extension test to check that system is functioning correctly.

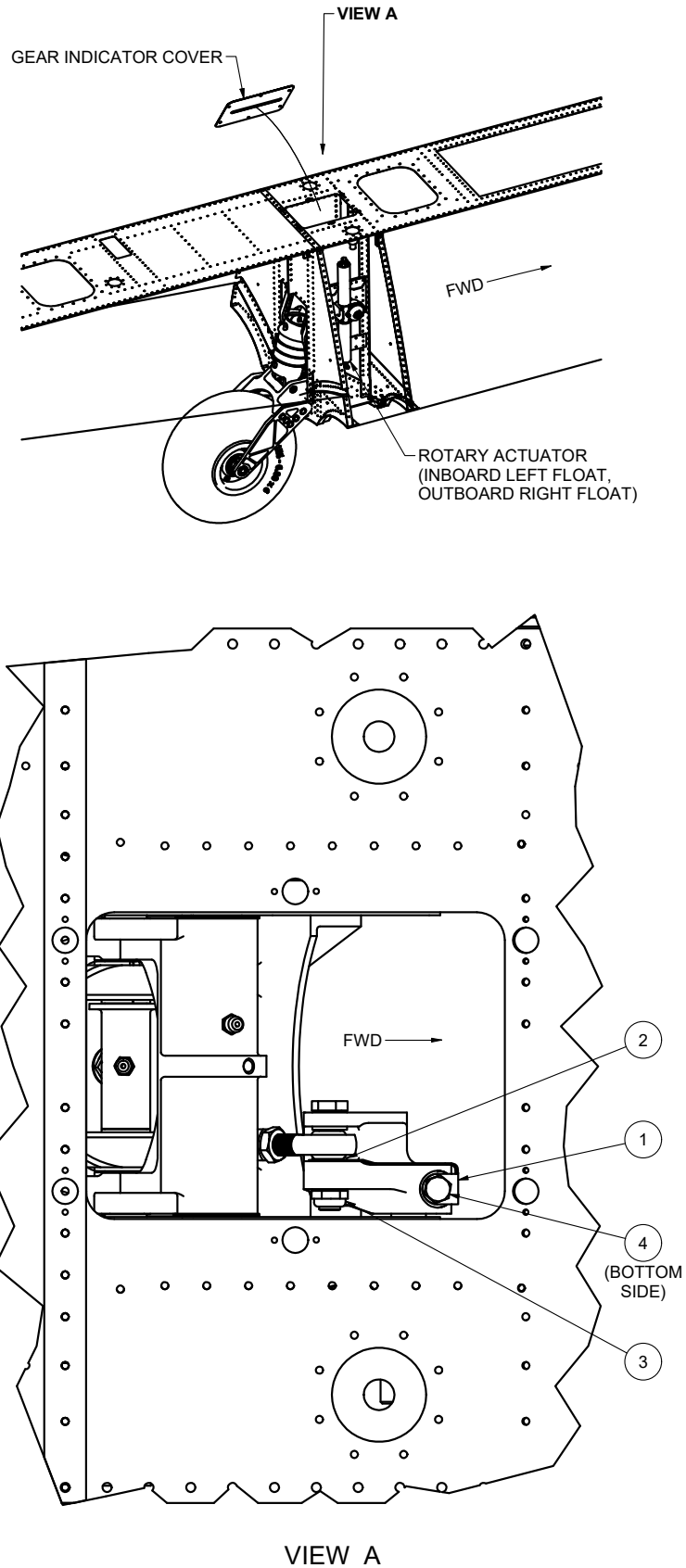


Figure 1

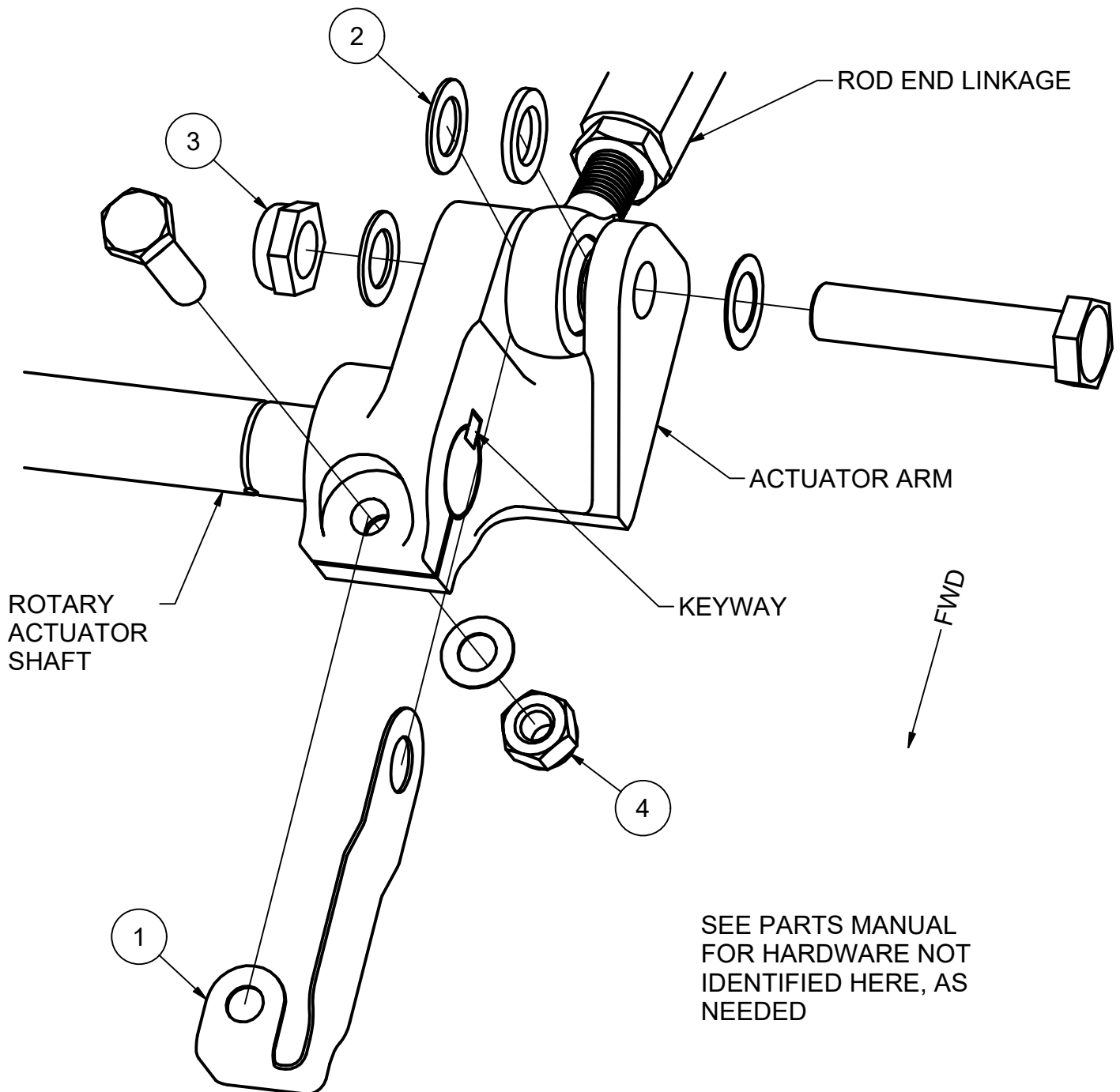


Figure 2
Exploded View

Aircraft Closing & Return to Service

1. Upon completion of inspection, enter information in Aircraft Logbook for completion of Wipaire Service Letter 274.